



U74AC14

CMOS IC

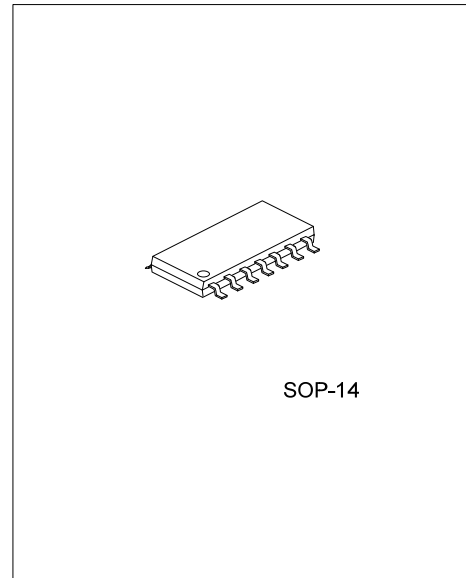
HEX SCHMITT-TRIGGER INVERTER

■ DESCRIPTION

The **U74AC14** contains six independent inverter with Schmitt-trigger , provides the Function $Y = \bar{A}$

■ FEATURES

- * Operation voltage range: 2.0~6.0V
- * Low power dissipation: $I_{CC}=20\mu A(\text{Max})$



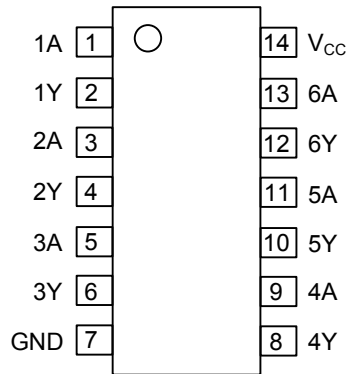
*Pb-free plating product number: U74AC14L

■ ORDERING INFORMATION

Ordering Number		Package	Packing
Normal	Lead Free Plating		
U74AC14-S14-R	U74AC04AL-S14-R	SOP-14	Tape Reel
U74AC14-S14-T	U74AC04AL-S14-T	SOP-14	Tube

<p>U74AC14L-S14-T</p> <ul style="list-style-type: none"> (1)Packing Type (2)Package Type (3)Lead Plating 	<ul style="list-style-type: none"> (1) R: Tape Reel, T: Tube (2) S14: SOP-14 (3) L: Lead Free Plating, Blank: Pb/Sn
---	--

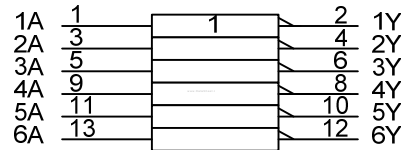
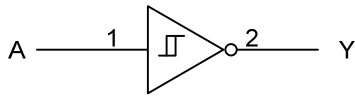
■ PIN CONFIGURATION



■ FUNCTION TABLE (each gate)

INPUT(A)	OUTPUT(Y)
L	H
H	L

■ LOGIC DIAGRAM (positive logic)



IEC logic symbol

■ ABSOLUTE MAXIMUM RATING (unless otherwise specified)

PARAMETER	SYMBOL	RATINGS	UNIT
Supply Voltage	V_{CC}	-0.5~7	V
Input Voltage	V_{IN}	-0.5~ $V_{CC}+0.5$	V
Output Voltage	V_{OUT}	-0.5~ $V_{CC}+0.5$	V
Input Clamp Current	I_{IK}	±20	mA
Output Clamp Current	I_{OK}	±20	mA
Output Current	I_{OUT}	±50	mA
V_{CC} or GND Current	I_{CC}	±200	mA
Storage Temperature	T_{STG}	-65 ~ +150	°C

Note: Absolute maximum ratings are those values beyond which the device could be permanently damaged. Absolute maximum ratings are stress ratings only and functional device operation is not implied.

■ RECOMMENDED OPERATING CONDITIONS

PARAMETER	SYMBOL	MIN	TYP	MAX	UNIT
Supply Voltage	V_{CC}	2.0		6.0	V
Input Voltage	V_{IN}	0		V_{CC}	V
Output Voltage	V_{OUT}	0		V_{CC}	V
High-Level Output Current	I_{OH}			-12	mA
				-24	
				-24	
Low-Level Output Current	I_{OL}			12	mA
				24	
				24	
Operating Temperature	T_A	-40	25	85	°C

■ STATIC CHARACTERISTICS ($T_A=25^\circ\text{C}$)

PARAMETER	SYMBOL	TEST CONDITIONS	MIN	TYP	MAX	UNIT
High-Level Input Voltage	V_{IH}	$V_{CC}=3.0\text{V}$	0.8	1.8	2.2	V
		$V_{CC}=4.5\text{V}$	1.5	2.6	3.2	V
		$V_{CC}=5.5\text{V}$	1.6	3.2	3.9	V
Low-Level Input Voltage	V_{IL}	$V_{CC}=3.0\text{V}$	0.5	0.8	1	V
		$V_{CC}=4.5\text{V}$	0.9	1.4	1.8	V
		$V_{CC}=5.5\text{V}$	1.1	1.8	2.3	V
Hysteresis	V_{TH}	$V_{CC}=3.0\text{V}$	0.3	1	1.2	V
		$V_{CC}=4.5\text{V}$	0.4	1.2	1.4	V
		$V_{CC}=5.5\text{V}$	0.5	1.4	1.6	V
High-Level Output Voltage	V_{OH}	$V_{CC}=3.0\text{V}, I_{OH}=-50\mu\text{A}$	2.9			V
		$V_{CC}=4.5\text{V}, I_{OH}=-50\mu\text{A}$	4.4			V
		$V_{CC}=5.5\text{V}, I_{OH}=-50\mu\text{A}$	5.4			V
		$V_{CC}=3.0\text{V}, I_{OH}=-12\text{mA}$	2.56			V
		$V_{CC}=4.5\text{V}, I_{OH}=-24\text{mA}$	3.86			V
		$V_{CC}=5.5\text{V}, I_{OH}=-24\text{mA}$	4.86			V
Low-Level Output Voltage	V_{OL}	$V_{CC}=3.0\text{V}, I_{OL}=50\mu\text{A}$		0.002	0.1	V
		$V_{CC}=4.5\text{V}, I_{OL}=50\mu\text{A}$		0.001	0.1	V
		$V_{CC}=5.5\text{V}, I_{OL}=50\mu\text{A}$		0.001	0.1	V
		$V_{CC}=3.0\text{V}, I_{OL}=12\text{mA}$			0.36	V
		$V_{CC}=4.5\text{V}, I_{OL}=24\text{mA}$			0.36	V
		$V_{CC}=5.5\text{V}, I_{OL}=24\text{mA}$			0.36	V
Input Leakage Current	$I_{(LEAK)}$	$V_{IN}=V_{CC}$ or GND, $V_{CC}=5.5$			±0.1	μA
Quiescent Supply Current	I_Q	$V_{IN}=V_{CC}$ or GND, $I_{OUT}=0$, $V_{CC}=5.5$			2	μA
Input Capacitance	C_{IN}	$V_{IN}=V_{CC}$ or GND		4.5		pF

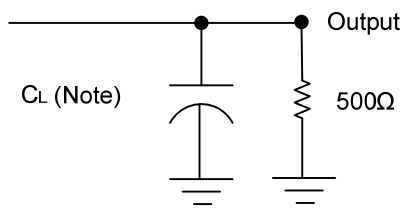
■ DYNAMIC CHARACTERISTICS ($T_A=25^\circ\text{C}$, Input: $t_R, t_F \leq 2.5\text{ns}$; $\text{PRR} \leq 1\text{MHz}$)

PARAMETER	SYMBOL	TEST CONDITIONS	MIN	TYP	MAX	UNIT
Propagation delay from input (A) to output(Y)	t_{PLH}	$V_{CC}=3.3\text{V}, C_L=50\text{pF}$	1.5	6	13.5	ns
		$V_{CC}=5.0\text{V}, C_L=50\text{pF}$	1.5	5	10	ns
	t_{PHL}	$V_{CC}=3.3\text{V}, C_L=50\text{pF}$	1.5	6	11.5	ns
		$V_{CC}=5.0\text{V}, C_L=50\text{pF}$	1.5	5	8.5	ns

■ OPERATING CHARACTERISTICS

PARAMETER	SYMBOL	TEST CONDITIONS	MIN	TYP	MAX	UNIT
Power Dissipation Capacitance	Cpd	$C_L=50\text{ pF}, f=1\text{MHz}, V_{CC}=5$		25		pF

■ TEST CIRCUIT AND WAVEFORMS



Note: CL includes probe and jig capacitance.

Fig.1 Load circuitry for switching times.

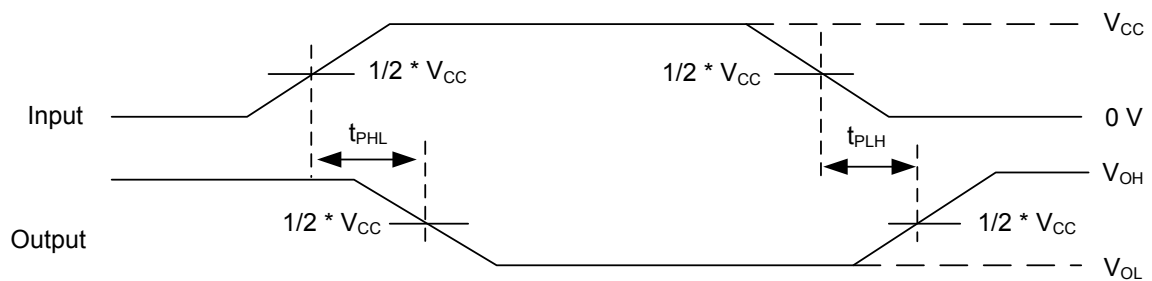


Fig.2 Propagation delay from input(A) to output(Y).

UTC assumes no responsibility for equipment failures that result from using products at values that exceed, even momentarily, rated values (such as maximum ratings, operating condition ranges, or other parameters) listed in products specifications of any and all UTC products described or contained herein. UTC products are not designed for use in life support appliances, devices or systems where malfunction of these products can be reasonably expected to result in personal injury. Reproduction in whole or in part is prohibited without the prior written consent of the copyright owner. The information presented in this document does not form part of any quotation or contract, is believed to be accurate and reliable and may be changed without notice.