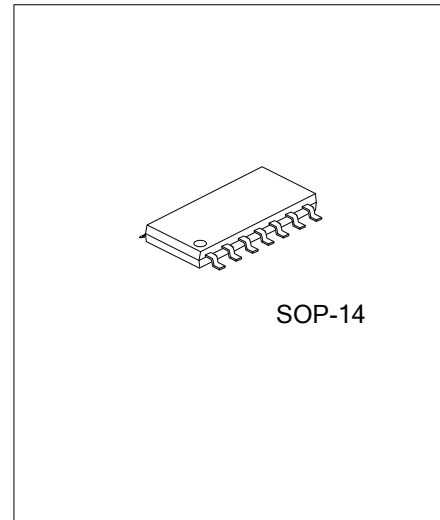




# U74AHC126

CMOS IC

## QUADRUPLE BUS BUFFER GATES WITH 3-STATE OUTPUTS



### DESCRIPTION

The **U74HC126** is a quadruple bus buffer gate with 3-state outputs and 4 channels.

### FEATURES

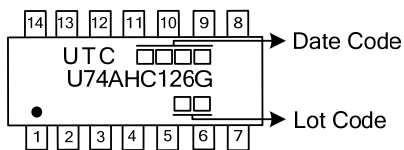
- \* Operate from 2V to 5.5V
- \* Max  $t_{pd}$  of 5.5ns at 5 V(CL=15pF)
- \* Typical  $V_{IH}$  < 2.1V at  $V_{CC}$ =3V,  $T_a$ =25°C
- \* Typical  $V_{IL}$  > 0.9V at  $V_{CC}$ =3V,  $T_a$ =25°C

### ORDERING INFORMATION

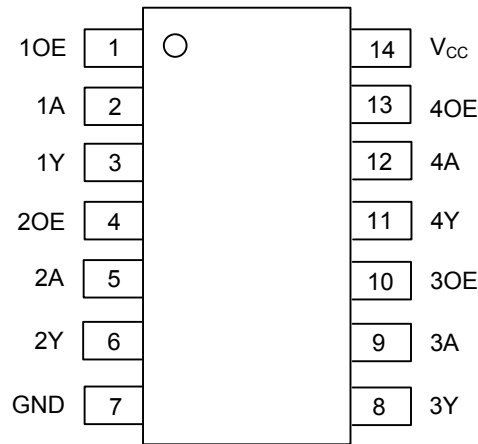
Ordering Number	Package	Packing
U74AHC126G-S14-R	SOP-14	Tape Reel

<p>U74AHC126G-S14-R</p> <ul style="list-style-type: none"> <li>(1) Packing Type</li> <li>(2) Package Type</li> <li>(3) Green Package</li> </ul>	<ul style="list-style-type: none"> <li>(1) R: Tape Reel</li> <li>(2) S14: SOP-14</li> <li>(3) G: Halogen Free and Lead Free</li> </ul>
---	--

### MARKING



■ PIN CONFIGURATION

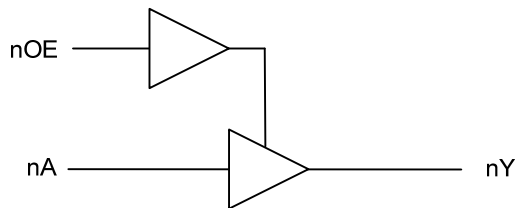


■ FUNCTION TABLE

INPUTS(OE)	INPUTS(A)	OUTPUT(Y)
H	L	L
H	H	H
L	X	Z

Note: H: HIGH voltage level L: LOW voltage level Z: high impedance X: don't care

■ LOGIC DIAGRAM



## ■ ABSOLUTE MAXIMUM RATING

PARAMETER	SYMBOL	RATINGS	UNIT
Supply Voltage	$V_{CC}$	-0.5 ~ 7	V
Input Voltage	$V_{IN}$	-0.5 ~ 7	V
Output Voltage	$V_{OUT}$	-0.5 ~ $V_{CC} + 0.5$	V
$V_{CC}$ or GND Current	$I_{CC}$	±50	mA
Output Current	$I_{OUT}$	±25	mA
Input Clamp Current	$I_{IK}$	-20	mA
Output Clamp Current	$I_{OK}$	±20	mA
Operating Temperature	$T_{OPR}$	-40 ~ + 85	°C
Storage Temperature	$T_{STG}$	-65 ~ + 150	°C

Note: Absolute maximum ratings are those values beyond which the device could be permanently damaged.  
 Absolute maximum ratings are stress ratings only and functional device operation is not implied.

## ■ THERMAL DATA

PARAMETER	SYMBOL	MIN	TYP	MAX	UNIT
Junction to Ambient	$\theta_{JA}$			76	°C/W

## ■ RECOMMENDED OPERATING CONDITIONS

PARAMETER	SYMBOL	TEST CONDITIONS	MIN	TYP	MAX	UNIT
Supply Voltage	$V_{CC}$		2		5.5	V
High-Level Input Voltage	$V_{IH}$	$V_{CC}=2V$	1.5			V
		$V_{CC}=3V$	2.1			
		$V_{CC}=5.5V$	3.85			
Low-Level Input Voltage	$V_{IL}$	$V_{CC}=2V$			0.5	V
		$V_{CC}=3V$			0.9	
		$V_{CC}=5.5V$			1.65	
Input Voltage	$V_{IN}$		0		5.5	V
Output Voltage	$V_{OUT}$		0		$V_{CC}$	V
High-Level Input Current	$I_{OH}$	$V_{CC}=2V$			-50	μA
		$V_{CC}=3.3V \pm 0.3V$			-4	mA
		$V_{CC}=5V \pm 0.5V$			-8	mA
Low-Level Input Current	$I_{OL}$	$V_{CC}=2V$			50	μA
		$V_{CC}=3.3V \pm 0.3V$			4	mA
		$V_{CC}=5V \pm 0.5V$			8	mA
Input Transition Rise or Fall rate	tR, tF	$V_{CC}=3.3V \pm 0.3V$			100	ns/V
		$V_{CC}=5V \pm 0.5V$			20	

## ■ ELECTRICAL CHARACTERISTICS ( $T_A=25^\circ C$ )

PARAMETER	SYMBOL	TEST CONDITIONS	MIN	TYP	MAX	UNIT
Output Voltage High-Level	$V_{OH}$	$V_{CC}=2V, I_{OH}=-50\mu A$	1.9	2		V
		$V_{CC}=3V, I_{OH}=-50\mu A$	2.9	3		
		$V_{CC}=4.5V, I_{OH}=-50\mu A$	4.4	4.5		
		$V_{CC}=3V, I_{OH}=-4mA$	2.58			
		$V_{CC}=4.5V, I_{OH}=-8mA$	3.94			
Output Voltage Low-Level	$V_{OL}$	$V_{CC}=2V, I_{OL}=50\mu A$			0.1	V
		$V_{CC}=3V, I_{OL}=50\mu A$			0.1	
		$V_{CC}=4.5V, I_{OL}=50\mu A$			0.1	
		$V_{CC}=3V, I_{OL}=4mA$			0.36	
		$V_{CC}=4.5V, I_{OL}=8mA$			0.36	
Input Leakage Current	$I_{(LEAK)}$	$V_{CC}=0V \sim 5.5V, V_{IN}=V_{CC}$ or GND			±100	nA
Output Off-State Current	$I_{OZ}$	$V_{CC}=5.5V, V_{OUT}=V_{CC}$ or GND			±250	nA
Quiescent Supply Current	$I_Q$	$V_{CC}=5.5V, V_{IN}=V_{CC}$ or GND, $I_{OUT}=0$			4	μA
Input Capacitance	$C_I$	$V_{CC}=5V$		4	10	pF

■ SWITCHING CHARACTERISTICS( $T_A=25^{\circ}\text{C}$ ,  $C_L=15\text{pF}$ )

PARAMETER	SYMBOL	TEST CONDITIONS	MIN	TYP	MAX	UNIT
Propagation Delay From Input A to Output Y	$t_{PLH}/t_{PHL}$	$V_{CC}=3.3\text{V}\pm 0.3\text{V}$	1		9.5	ns
		$V_{CC}=5\text{V}\pm 0.5\text{V}$	1		6.5	
Propagation Delay From Input OE to Output Y	$t_{PZH}/t_{PZL}$	$V_{CC}=3.3\text{V}\pm 0.3\text{V}$	1		9.5	ns
		$V_{CC}=5\text{V}\pm 0.5\text{V}$	1		6	
Propagation Delay From Input OE to Output Y	$t_{PHZ}/t_{PLZ}$	$V_{CC}=3.3\text{V}\pm 0.3\text{V}$	1		11.5	ns
		$V_{CC}=5\text{V}\pm 0.5\text{V}$	1		8	

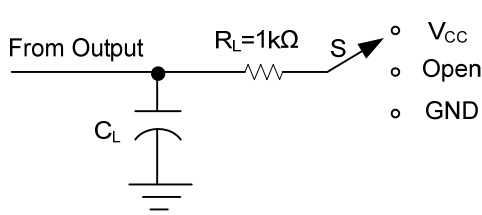
■ SWITCHING CHARACTERISTICS( $T_A=25^{\circ}\text{C}$ ,  $C_L=50\text{pF}$ )

PARAMETER	SYMBOL	TEST CONDITIONS	MIN	TYP	MAX	UNIT
Propagation Delay From Input A to Output Y	$t_{PLH}/t_{PHL}$	$V_{CC}=3.3\text{V}\pm 0.3\text{V}$	1		13	ns
		$V_{CC}=5\text{V}\pm 0.5\text{V}$	1		8.5	
Propagation Delay From Input OE to Output Y	$t_{PZH}/t_{PZL}$	$V_{CC}=3.3\text{V}\pm 0.3\text{V}$	1		13	ns
		$V_{CC}=5\text{V}\pm 0.5\text{V}$	1		8	
Propagation Delay From Input OE to Output Y	$t_{PHZ}/t_{PLZ}$	$V_{CC}=3.3\text{V}\pm 0.3\text{V}$	1		15	ns
		$V_{CC}=5\text{V}\pm 0.5\text{V}$	1		10	

■ OPERATING CHARACTERISTICS( $T_A=25^{\circ}\text{C}$ )

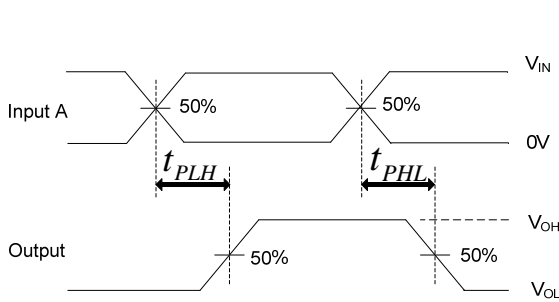
PARAMETER	SYMBOL	TEST CONDITIONS	MIN	TYP	MAX	UNIT
Power Dissipation Capacitance	Cpd	No Load, $f=1\text{MHz}$		14		pF

## ■ TEST CIRCUIT AND WAVEFORMS

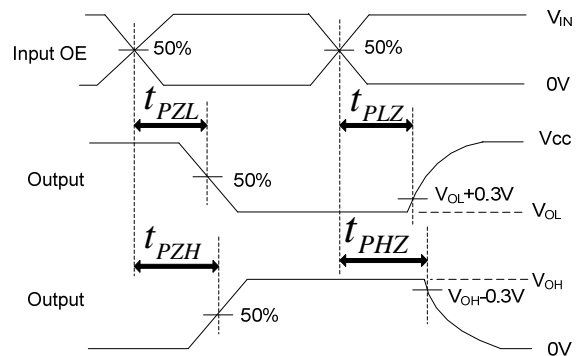


TEST CIRCUIT

TEST	S
$t_{PLH}/t_{PHL}$	Open
$t_{PHZ}/t_{PZH}$	GND
$t_{PLZ}/t_{PZL}$	$V_{CC}$



PROPAGATION DELAY TIMES



ENABLE AND DISABLE TIMES

Note:  $C_L$  includes probe and jig capacitance.

All input pulses are supplied by generators having the following characteristics: PRR  $\leq$  1MHz,  $Z_o = 50\Omega$ ,  $t_r \leq 3ns$ ,  $t_f \leq 3ns$ .

UTC assumes no responsibility for equipment failures that result from using products at values that exceed, even momentarily, rated values (such as maximum ratings, operating condition ranges, or other parameters) listed in products specifications of any and all UTC products described or contained herein. UTC products are not designed for use in life support appliances, devices or systems where malfunction of these products can be reasonably expected to result in personal injury. Reproduction in whole or in part is prohibited without the prior written consent of the copyright owner. The information presented in this document does not form part of any quotation or contract, is believed to be accurate and reliable and may be changed without notice.