



## U74AHC21

CMOS IC

### DUAL 4-INPUT AND GATES

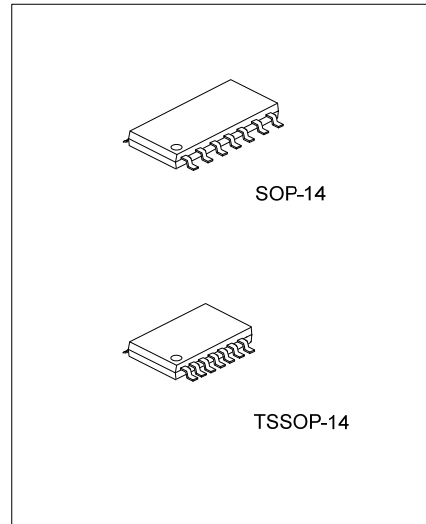
#### DESCRIPTION

The **U74AHC21** contains two independent 4-input AND gates. They perform the Boolean function  $Y=A \bullet B \bullet C \bullet D$  or

$$Y=\overline{A+B+C+D} \text{ in positive logic.}$$

#### FEATURES

- \* Operation voltage range: 2~5.5V
- \* Low power dissipation:  $I_{CC}=2\mu A$  (Max.)
- \*  $\pm 8mA$  output drive at 5V

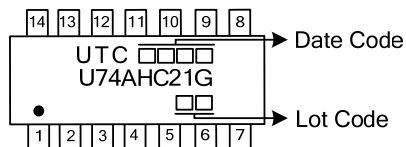


#### ORDERING INFORMATION

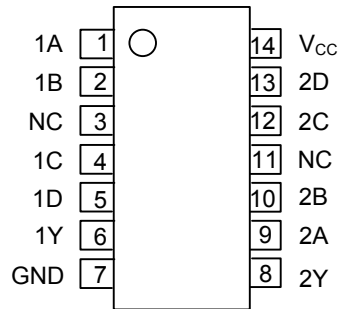
| Ordering Number | Package  | Packing   |
|-----------------|----------|-----------|
| U74AHC21G-S14-R | SOP-14   | Tape Reel |
| U74AHC21G-P14-R | TSSOP-14 | Tape Reel |

|  |   |
|--|---|
| <p>U74AHC21G-S14-R</p> <ul style="list-style-type: none"> <li>(1) Packing Type</li> <li>(2) Package Type</li> <li>(3) Green Package</li> </ul> | <ul style="list-style-type: none"> <li>(1) R: Tape Reel</li> <li>(2) S14: SOP-14, P14: TSSOP-14</li> <li>(3) G: Halogen Free and Lead Free</li> </ul> |
|--|---|

#### MARKING



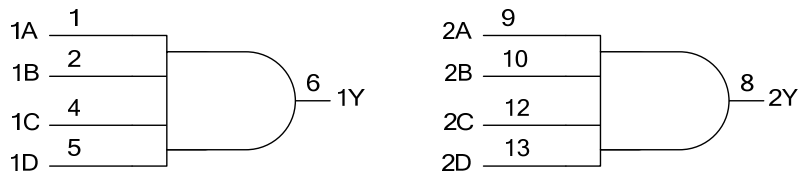
■ PIN CONFIGURATION



■ FUNCTION TABLE (each gate)

| INPUT(A) | INPUT(B) | INPUT(C) | INPUT(D) | OUTPUT(Y) |
|----------|----------|----------|----------|-----------|
| H        | H        | H        | H        | H         |
| L        | X        | X        | X        | L         |
| X        | L        | X        | X        | L         |
| X        | X        | L        | X        | L         |
| X        | X        | X        | L        | L         |

■ LOGIC DIAGRAM (positive logic)



■ ABSOLUTE MAXIMUM RATING (unless otherwise specified)

| PARAMETER   | SYMBOL           | RATINGS    | UNIT |
|---|------------------|------------|------|
| Supply Voltage  | V <sub>CC</sub>  | -0.5~7     | V    |
| Input Clamp Current(V <sub>I</sub> <0)                                      | I <sub>IK</sub>  | -20        | mA   |
| Output Clamp Current(V <sub>O</sub> <0 or V <sub>O</sub> >V <sub>CC</sub> ) | I <sub>OK</sub>  | ±20        | mA   |
| Output Current  | I <sub>OUT</sub> | ±25        | mA   |
| V <sub>CC</sub> or GND Current  | I <sub>CC</sub>  | ±50        | mA   |
| Storage Temperature   | T <sub>STG</sub> | -65 ~ +150 | °C   |

Note: Absolute maximum ratings are those values beyond which the device could be permanently damaged. Absolute maximum ratings are stress ratings only and functional device operation is not implied.

■ RECOMMENDED OPERATING CONDITIONS

| PARAMETER  | SYMBOL                          | CONDITIONS               | MIN | TYP | MAX             | UNIT |
|--|---------------------------------|--------------------------|-----|-----|-----------------|------|
| Supply Voltage   | V <sub>CC</sub>                 |                          | 2   |     | 5.5             | V    |
| Input Voltage  | V <sub>IN</sub>                 |                          | 0   |     | V <sub>CC</sub> | V    |
| Output Voltage   | V <sub>OUT</sub>                |                          | 0   |     | V <sub>CC</sub> | V    |
| Input Transition Rise or Fall Rate $\Delta t/\Delta V$ | t <sub>r</sub> , t <sub>f</sub> | V <sub>CC</sub> =3V±0.3V |     |     | 100             | ns   |
|  |                                 | V <sub>CC</sub> =5V±0.5V |     |     | 20              | ns   |
| Operating Temperature                                  | T <sub>A</sub>                  |                          | -40 |     | 85              | °C   |

■ STATIC CHARACTERISTICS (T<sub>A</sub> = 25°C)

| PARAMETER                 | SYMBOL               | TEST CONDITIONS  | MIN  | TYP | MAX  | UNIT |
|---------------------------|----------------------|--|------|-----|------|------|
| High-Level Input Voltage  | V <sub>IH</sub>      | V <sub>CC</sub> = 2 V  | 1.5  |     |      | V    |
|                           |                      | V <sub>CC</sub> = 3V   | 2.1  |     |      | V    |
|                           |                      | V <sub>CC</sub> = 5.5 V  | 3.85 |     |      | V    |
| Low-Level Input Voltage   | V <sub>IL</sub>      | V <sub>CC</sub> = 2 V  |      |     | 0.5  | V    |
|                           |                      | V <sub>CC</sub> = 3V   |      |     | 0.9  | V    |
|                           |                      | V <sub>CC</sub> = 5.5 V  |      |     | 1.65 | V    |
| High-Level Output Voltage | V <sub>OH</sub>      | V <sub>CC</sub> = 2V, I <sub>OH</sub> = 50µA   | 1.9  |     |      | V    |
|                           |                      | V <sub>CC</sub> = 3V, I <sub>OH</sub> = 50µA   | 2.9  |     |      | V    |
|                           |                      | V <sub>CC</sub> = 4.5V, I <sub>OH</sub> = 50µA   | 4.4  |     |      | V    |
|                           |                      | V <sub>CC</sub> = 3V, I <sub>OH</sub> = 4mA  | 2.58 |     |      | V    |
|                           |                      | V <sub>CC</sub> = 4.5V, I <sub>OH</sub> = 8mA  | 3.94 |     |      | V    |
| Low-Level Output Voltage  | V <sub>OL</sub>      | V <sub>CC</sub> = 2V, I <sub>OH</sub> = 50µA   |      |     | 0.1  | V    |
|                           |                      | V <sub>CC</sub> = 3V, I <sub>OH</sub> = 50µA   |      |     | 0.1  | V    |
|                           |                      | V <sub>CC</sub> = 4.5V, I <sub>OH</sub> = 50µA   |      |     | 0.1  | V    |
|                           |                      | V <sub>CC</sub> = 3V, I <sub>OH</sub> = 4mA  |      |     | 0.36 | V    |
|                           |                      | V <sub>CC</sub> = 4.5V, I <sub>OH</sub> = 8mA  |      |     | 0.36 | V    |
| Input Leakage Current     | I <sub>I(LEAK)</sub> | V <sub>CC</sub> = 6V, V <sub>IN</sub> = V <sub>CC</sub> or GND                         |      |     | ±0.1 | µA   |
| Quiescent Supply Current  | I <sub>CC</sub>      | V <sub>CC</sub> = 5.5V, V <sub>IN</sub> = V <sub>CC</sub> or GND, I <sub>OUT</sub> = 0 |      |     | 2    | µA   |
| Input Capacitance         | C <sub>IN</sub>      | V <sub>CC</sub> = 5V   |      |     | 4    | pF   |

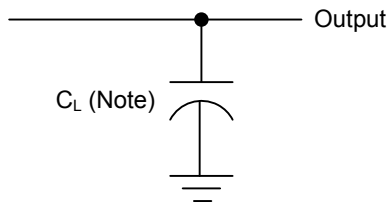
■ DYNAMIC CHARACTERISTICS ( Input: t<sub>r</sub>=t<sub>f</sub>=3ns, 25°C, unless otherwise specified )

| PARAMETER  | SYMBOL           | TEST CONDITION            | MIN                  | TYP | MAX | UNIT |    |
|--|------------------|---------------------------|----------------------|-----|-----|------|----|
| Propagation delay from input (A ,B,C,D) to output(Y) | t <sub>PLH</sub> | V <sub>CC</sub> =3.3±0.3V | C <sub>L</sub> =15pF |     | 6.2 | 8.8  | ns |
|  |                  |                           | C <sub>L</sub> =50pF |     | 8.7 | 12.3 | ns |
|  | t <sub>PHL</sub> | V <sub>CC</sub> =5±0.5V   | C <sub>L</sub> =15pF |     | 4.5 | 5.9  | ns |
|  |                  |                           | C <sub>L</sub> =50pF |     | 5.8 | 7.9  | ns |

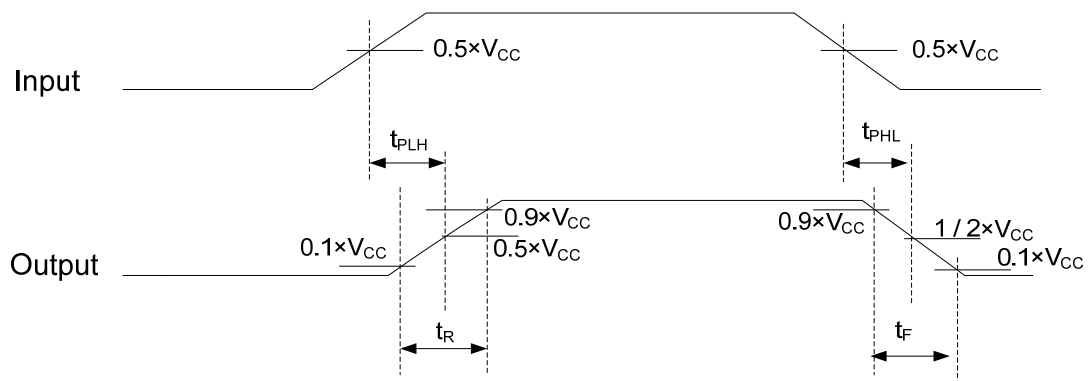
■ OPERATING CHARACTERISTICS (T<sub>A</sub>=25°C, unless otherwise specified)

| PARAMETER                     | SYMBOL          | TEST CONDITION | MIN | TYP | MAX | UNIT |
|-------------------------------|-----------------|----------------|-----|-----|-----|------|
| Power Dissipation Capacitance | C <sub>pd</sub> | No load        |     | 18  |     | pF   |

■ TEST CIRCUIT AND WAVEFORMS



Note :  $C_L$  includes probe and jig capacitance.



UTC assumes no responsibility for equipment failures that result from using products at values that exceed, even momentarily, rated values (such as maximum ratings, operating condition ranges, or other parameters) listed in products specifications of any and all UTC products described or contained herein. UTC products are not designed for use in life support appliances, devices or systems where malfunction of these products can be reasonably expected to result in personal injury. Reproduction in whole or in part is prohibited without the prior written consent of the copyright owner. The information presented in this document does not form part of any quotation or contract, is believed to be accurate and reliable and may be changed without notice.