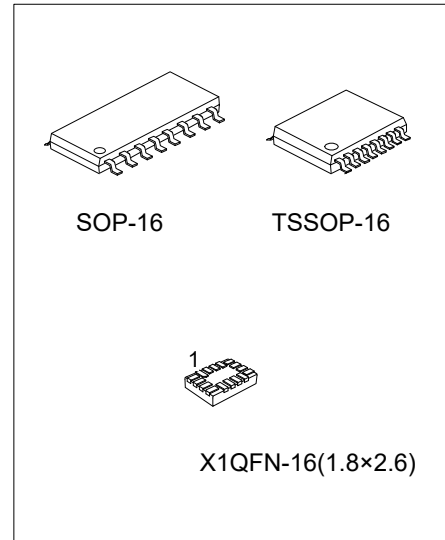




## U74AVC4T245

CMOS IC

### 4 BIT DUAL-SUPPLY BUS TRANSCEIVER WITH CONFIGURABLE VOLTAGE TRANSLATION AND 3-STATE OUTPUTS



#### DESCRIPTION

The UTC **U74AVC4T245** is an 4-bit dual supply transceiver that enables bidirectional level translation. The A port is designed to track  $V_{CCA}$ .  $V_{CCA}$  accepts any supply voltage from 1.2V to 3.6V. The B port is designed to track  $V_{CCB}$ .  $V_{CCB}$  accepts any supply voltage from 1.2V to 3.6V. The UTC **U74AVC4T245** is optimized to operate with  $V_{CCA}/V_{CCB}$  set at 1.4V to 3.6V. It is operational with  $V_{CCA}/V_{CCB}$  as low as 1.2V. This allows for universal low-voltage bidirectional translation between any of the 1.2V, 1.5V, 1.8V, 2.5V and 3.3V voltage nodes.

The UTC **U74AVC4T245** device is designed for asynchronous communication between two data buses. The logic levels of the direction-control (DIR) input and the output-enable ( $\overline{OE}$ ) input activate either the B-port outputs or the A-port outputs or place both output ports into the high-impedance mode. The device transmits data from the A bus to the B bus when the B-port outputs are activated, and from the B bus to the A bus when the A-port outputs are activated. The input circuitry on both A and B ports is always active and must have a logic HIGH or LOW level applied to prevent excess  $I_{CC}$  and  $I_{CCZ}$ .

The UTC **U74AVC4T245** device is designed so that the control pins (1DIR, 2DIR,  $1\overline{OE}$  and  $2\overline{OE}$ ) are supplied by  $V_{CCA}$ . This device is fully specified for partial-power-down applications using  $I_{OFF}$ . The  $I_{OFF}$  circuitry disables the outputs, preventing any damaging current backflow through the device when it is powered down. The  $V_{CC}$  isolation feature ensures that if either  $V_{CC}$  input is at GND, then both ports are in the high-impedance state. To ensure the high-impedance state during power up or power down,  $\overline{OE}$  should be tied to  $V_{CC}$  through a pullup resistor; the minimum value of the resistor is determined by the current-sinking capability of the driver.

#### FEATURES

- \* Operation Voltage Range: 1.2~3.6V
- \* Control Inputs  $V_{IH}$  /  $V_{IL}$  Levels Are Referenced to  $V_{CCA}$  Voltage
- \* I/Os Are 4.6V Tolerant
- \*  $I_{OFF}$  Supports Partial Power Down Mode Operation

■ ORDERING INFORMATION

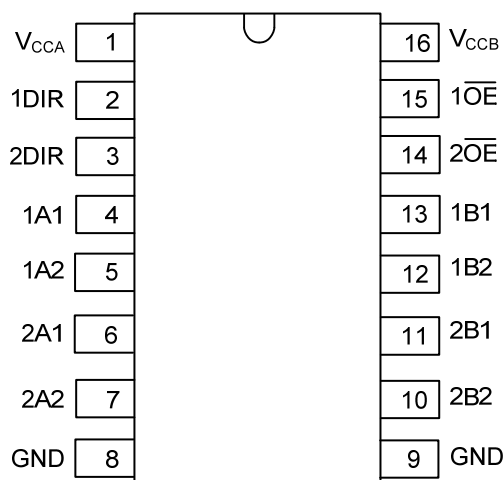
Ordering Number		Package	Packing
Lead Free	Halogen Free		
U74AVC4T245L-S16-R	U74AVC4T245G-S16-R	SOP-16	Tape Reel
U74AVC4T245L-P16-R	U74AVC4T245G-P16-R	TSSOP-16	Tape Reel
U74AVC4T245L-QAE-R	U74AVC4T245G-QAE-R	X1QFN-16(1.8×2.6)	Tape Reel

<p>U74AVC4T245G-S16-R</p> <p>(1) Packing Type (2) Package Type (3) Green Package</p>	<p>(1) R: Tape Reel (2) S16: SOP-16, P16: TSSOP-16 QAE: X1QFN-16(1.8×2.6) (3) G: Halogen Free and Lead Free, L: Lead Free</p>
--	---

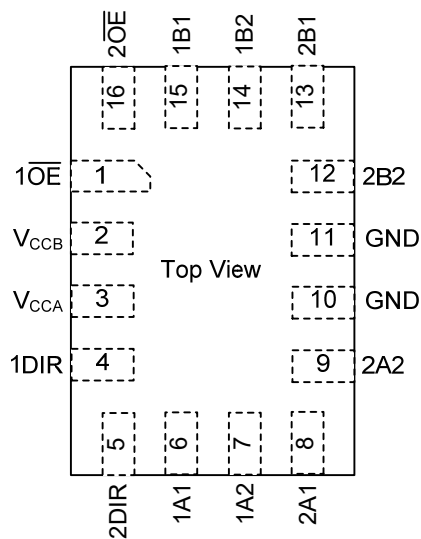
■ MARKING

SOP-16 / TSSOP-16	X1QFN-16(1.8×2.6)
<p>UTC □□□□ → Date Code L: Lead Free G: Halogen Free □□□□ → Lot Code</p>	<p>• AVC 4T245 □□□□ → Date Code</p>

## PIN CONFIGURATION



SOP-16 / TSSOP-16



X1QFN-16(1.8x2.6)

## PIN DESCRIPTION

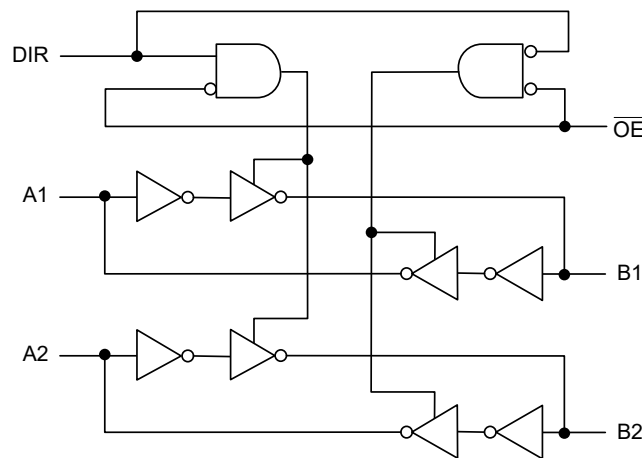
PIN NO.		PIN NAME	TYPE	DESCRIPTION
SOP-16 TSSOP-16	X1QFN-16(1.8x2.6)			
1	3	V <sub>CCA</sub>		A-port power supply voltage. $1.2V \leq V_{CCA} \leq 3.6V$
2	4	1DIR	I	Direction-control input for '1' ports
3	5	2DIR	I	Direction-control input for '2' ports
4	6	1A1	I/O	Input/output 1A1. Referenced to V <sub>CCA</sub>
5	7	1A2	I/O	Input/output 1A2. Referenced to V <sub>CCA</sub>
6	8	2A1	I/O	Input/output 2A1. Referenced to V <sub>CCA</sub>
7	9	2A2	I/O	Input/output 2A2. Referenced to V <sub>CCA</sub>
8, 9	10, 11	GND		Ground
10	12	2B2	I/O	Input/output 2B2. Referenced to V <sub>CCB</sub>
11	13	2B1	I/O	Input/output 2B1. Referenced to V <sub>CCB</sub>
12	14	1B2	I/O	Input/output 1B2. Referenced to V <sub>CCB</sub>
13	15	1B1	I/O	Input/output 1B1. Referenced to V <sub>CCB</sub>
14	16	2OE	I	3-state output-mode enables. Pull OE high to place '2' outputs in 3-state mode. Referenced to V <sub>CCA</sub>
15	1	1OE	I	3-state output-mode enables. Pull OE high to place '1' outputs in 3-state mode. Referenced to V <sub>CCA</sub>
16	2	V <sub>CCB</sub>		B-port power supply voltage. $1.2V \leq V_{CCB} \leq 3.6V$

■ FUNCTION TABLE

INPUTS		OUTPUT		OPERATION
$\overline{OE}n$	DIRn	A PORT	B PORT	
L	L	Enabled	Hi-Z	Bn data to An data
L	H	Hi-Z	Enabled	An data to Bn data
H	X	Hi-Z	Hi-Z	Isolation

Notes: 1. L: low voltage level; H: high voltage level; X: don't care  
 2. Input circuits of the data I/Os are always active.

■ LOGIC DIAGRAM



■ ABSOLUTE MAXIMUM RATING ( $T_A=25^{\circ}\text{C}$ , unless otherwise specified) (Note 1)

PARAMETER	SYMBOL	TEST CONDITIONS	RATINGS	UNIT
Supply Voltage	$V_{CCA}, V_{CCB}$		-0.5 ~ 4.6	V
Input Voltage (Note 2)	$V_{IN}$	I/O ports (A port)	-0.5 ~ 4.6	V
		I/O ports (B port)	-0.5 ~ 4.6	V
		Control inputs	-0.5 ~ 4.6	V
Voltage range applied to any output in the high-impedance or power-off state (Note 2)	$V_{OUT}$	A port	-0.5 ~ 4.6	V
		B port	-0.5 ~ 4.6	V
Voltage range applied to any output in the high or low state (Note 2, 3)	$V_{OUT}$	A port	-0.5 ~ $V_{CCA}+0.5$	V
		B port	-0.5 ~ $V_{CCB}+0.5$	V
Continuous Output Current	$I_{OUT}$		$\pm 50$	mA
Continuous Current Through $V_{CCA}, V_{CCB}$ or GND	$I_{CC}$		$\pm 100$	mA
Input Clamp Current	$I_{IK}$	$V_{IN} < 0$	-50	mA
Output Clamp Current	$I_{OK}$	$V_{OUT} < 0$	-50	mA
Storage Temperature Range	$T_{STG}$		-65 ~ +150	$^{\circ}\text{C}$

Notes: 1. Absolute maximum ratings are those values beyond which the device could be permanently damaged. Absolute maximum ratings are stress ratings only and functional device operation is not implied.

2. The input voltage and output negative-voltage ratings may be exceeded if the input and output current ratings are observed.

3. The output positive-voltage rating may be exceeded up to 4.6V maximum if the output current rating is observed.

■ RECOMMENDED OPERATING CONDITIONS ( $T_A=25^{\circ}\text{C}$ , unless otherwise specified)

PARAMETER	SYMBOL	CONDITIONS	MIN	TYP	MAX	UNIT
Supply Voltage	$V_{CCA}, V_{CCB}$		1.2		3.6	V
Input Voltage	$V_{IN}$		0		3.6	V
Output Voltage	$V_{OUT}$	Active state	0		$V_{CC}$	V
		3-state	0		3.6	
Input Transition Rise or Fall Rate	$\Delta t/\Delta v$				5	ns/V
Operating Temperature (Note)	$T_A$		-40		+125	$^{\circ}\text{C}$

■ ELECTRICAL CHARACTERISTICS (Note 1, 2, 3)

PARAMETER		SYMBOL	TEST CONDITIONS	T <sub>A</sub> =25°C			T <sub>A</sub> =-40~+125°C			UNIT
				MIN	TYP	MAX	MIN	TYP	MAX	
High-level input voltage	Data inputs (Note 4)	V <sub>IH</sub>	V <sub>CCI</sub> =1.2V~1.95V	V <sub>CCI</sub> × 0.65			V <sub>CCI</sub> × 0.65			V
			V <sub>CCI</sub> =1.95V~2.7V	1.6			1.6			V
			V <sub>CCI</sub> =2.7V~3.6V	2			2			V
	DIR (Referenced to V <sub>CCA</sub> ) (Note 5)		V <sub>CCI</sub> =1.2V~1.95V	V <sub>CCA</sub> × 0.65			V <sub>CCA</sub> × 0.65			V
			V <sub>CCI</sub> =1.95V~2.7V	1.6			1.6			V
			V <sub>CCI</sub> =2.7V~3.6V	2			2			V
Low-level output voltage	Data inputs (Note 4)	V <sub>IL</sub>	V <sub>CCI</sub> =1.2V~1.95V			V <sub>CCI</sub> × 0.35			V <sub>CCI</sub> × 0.35	V
			V <sub>CCI</sub> =1.95V~2.7V			0.7			0.7	V
			V <sub>CCI</sub> =2.7V~3.6V			0.8			0.8	V
	DIR (Referenced to V <sub>CCA</sub> ) (Note 5)		V <sub>CCI</sub> =1.2V~1.95V			V <sub>CCA</sub> × 0.35			V <sub>CCA</sub> × 0.35	V
			V <sub>CCI</sub> =1.95V~2.7V			0.7			0.7	V
			V <sub>CCI</sub> =2.7V~3.6V			0.8			0.8	V
High-Level Output Voltage	V <sub>OH</sub>	V <sub>CCA</sub> =V <sub>CCB</sub> =1.2V~3.6V I <sub>OH</sub> =-100μA, V <sub>I</sub> =V <sub>IH</sub>	V <sub>CC-</sub> 0.2			V <sub>CC-</sub> 0.1			V	
		V <sub>CCA</sub> =V <sub>CCB</sub> =1.2V I <sub>OH</sub> =-3mA, V <sub>I</sub> =V <sub>IH</sub>		0.95			0.65		V	
		V <sub>CCA</sub> =V <sub>CCB</sub> =1.4V I <sub>OH</sub> =-6mA, V <sub>I</sub> =V <sub>IH</sub>	1.05			0.75			V	
		V <sub>CCA</sub> =V <sub>CCB</sub> =1.65V I <sub>OH</sub> =-8mA, V <sub>I</sub> =V <sub>IH</sub>	1.2			0.9			V	
		V <sub>CCA</sub> =V <sub>CCB</sub> =2.3V I <sub>OH</sub> =-9mA, V <sub>I</sub> =V <sub>IH</sub>	1.75			1.45			V	
		V <sub>CCA</sub> =V <sub>CCB</sub> =3.0V I <sub>OH</sub> =-12mA, V <sub>I</sub> =V <sub>IH</sub>	2.3			2.0			V	
		V <sub>CCA</sub> =V <sub>CCB</sub> =1.2V~3.6V I <sub>OL</sub> =100μA, V <sub>I</sub> =V <sub>IL</sub>				0.2			0.1	V
Low-Level Output Voltage	V <sub>OL</sub>	V <sub>CCA</sub> =V <sub>CCB</sub> =1.2V I <sub>OL</sub> =3mA, V <sub>I</sub> =V <sub>IL</sub>		0.25			0.5		V	
		V <sub>CCA</sub> =V <sub>CCB</sub> =1.4V I <sub>OL</sub> =6mA, V <sub>I</sub> =V <sub>IL</sub>				0.35		0.6	V	
		V <sub>CCA</sub> =V <sub>CCB</sub> =1.65V I <sub>OL</sub> =8mA, V <sub>I</sub> =V <sub>IL</sub>				0.45		0.7	V	
		V <sub>CCA</sub> =V <sub>CCB</sub> =2.3V I <sub>OL</sub> =9mA, V <sub>I</sub> =V <sub>IL</sub>				0.55		0.8	V	
		V <sub>CCA</sub> =V <sub>CCB</sub> =3.0V I <sub>OL</sub> =12mA, V <sub>I</sub> =V <sub>IL</sub>				0.7		0.95	V	

## ■ ELECTRICAL CHARACTERISTICS (Cont.)

PARAMETER		SYMBOL	TEST CONDITIONS	T <sub>A</sub> =25°C			T <sub>A</sub> =-40~+125°C			UNIT
				MIN	TYP	MAX	MIN	TYP	MAX	
Input Leakage Current	Control inputs	I <sub>I(LEAK)</sub>	V <sub>CCA</sub> =V <sub>CCB</sub> =1.2~3.6V V <sub>IN</sub> =V <sub>CCA</sub> or GND		±0.025	±0.25			±1	μA
Power OFF Leakage Current	A or B port	I <sub>OFF</sub>	V <sub>CCA</sub> =0V, V <sub>CCB</sub> =0~3.6V V <sub>IN</sub> or V <sub>OUT</sub> =0~3.6V		±0.1	±1			±5	μA
			V <sub>CCA</sub> =0~3.6V, V <sub>CCB</sub> =0V V <sub>IN</sub> or V <sub>OUT</sub> =0~3.6V		±0.1	±1			±5	μA
Output OFF-state current	A or B port	I <sub>OZ</sub>	V <sub>CCA</sub> =V <sub>CCB</sub> =3.6V V <sub>OUT</sub> =V <sub>CCO</sub> or GND V <sub>IN</sub> =V <sub>CCI</sub> or GND, $\overline{OE}$ =V <sub>IH</sub>		±0.5	±2.5			±5	μA
Quiescent Supply Current		I <sub>CCA</sub>	V <sub>CCA</sub> =V <sub>CCB</sub> =1.2~3.6V V <sub>IN</sub> =V <sub>CCI</sub> or GND, I <sub>O</sub> =0			8			50	μA
			V <sub>CCA</sub> =0V, V <sub>CCB</sub> =0~3.6V V <sub>IN</sub> =V <sub>CCI</sub> or GND, I <sub>O</sub> =0	-2			-12			μA
			V <sub>CCA</sub> =0~3.6V, V <sub>CCB</sub> =0V V <sub>IN</sub> =V <sub>CCI</sub> or GND, I <sub>O</sub> =0			8			50	μA
Quiescent Supply Current		I <sub>CCB</sub>	V <sub>CCA</sub> =V <sub>CCB</sub> =1.2~3.6V V <sub>IN</sub> =V <sub>CCI</sub> or GND, I <sub>O</sub> =0			8			50	μA
			V <sub>CCA</sub> =0V, V <sub>CCB</sub> =0~3.6V V <sub>IN</sub> =V <sub>CCI</sub> or GND, I <sub>O</sub> =0			8			50	μA
			V <sub>CCA</sub> =0~3.6V, V <sub>CCB</sub> =0V V <sub>IN</sub> =V <sub>CCI</sub> or GND, I <sub>O</sub> =0	-2			-12			μA
Quiescent Supply Current & Quiescent Supply Current		I <sub>CCA</sub> +I <sub>CCB</sub>	V <sub>CCA</sub> =V <sub>CCB</sub> =1.2~3.6V V <sub>IN</sub> =V <sub>CCI</sub> or GND, I <sub>O</sub> =0			16			65	μA

- Notes: 1. V<sub>CCI</sub> is the V<sub>CC</sub> associated with the input port.  
 2. V<sub>CCO</sub> is the V<sub>CC</sub> associated with the output port.  
 3. All unused data inputs of the device must be held at V<sub>CCI</sub> or GND to ensure proper device operation.  
 4. For V<sub>CCI</sub> values not specified in the data sheet, V<sub>IHMIN</sub>=V<sub>CCI</sub>×0.7V, V<sub>ILMAX</sub>=V<sub>CCI</sub>×0.3V  
 5. For V<sub>CCA</sub> values not specified in the data sheet, V<sub>IHMIN</sub>=V<sub>CCA</sub>×0.7V, V<sub>ILMAX</sub>=V<sub>CCA</sub>×0.3V

## ■ SWITCHING CHARACTERISTICS

(Over recommended operating free-air temperature range,  $V_{CCA}=1.2V$ , unless otherwise specified)

PARAMETER	SYMBOL	TEST CONDITIONS	$T_A=25^{\circ}C$			$T_A=-40\sim+125^{\circ}C$			UNIT
			MIN	TYP	MAX	MIN	TYP	MAX	
Propagation delay from input (A) to output (B)	$t_{PLH}$ $t_{PHL}$	$V_{CCB}=1.2V$		3.4			15		ns
		$V_{CCB}=1.5V\pm 0.1V$		2.9			13		ns
		$V_{CCB}=1.8V\pm 0.15V$		2.7			13		ns
		$V_{CCB}=2.5V\pm 0.2V$		2.6			13		ns
		$V_{CCB}=3.3V\pm 0.3V$		2.8			13		ns
Propagation delay from input (B) to output (A)	$t_{PLH}$ $t_{PHL}$	$V_{CCB}=1.2V$		3.6			15		ns
		$V_{CCB}=1.5V\pm 0.1V$		3.1			15		ns
		$V_{CCB}=1.8V\pm 0.15V$		2.8			13		ns
		$V_{CCB}=2.5V\pm 0.2V$		2.6			13		ns
		$V_{CCB}=3.3V\pm 0.3V$		2.6			13		ns
Propagation delay from input ( $\overline{OE}$ ) to output (A)	$t_{PZH}$ $t_{PZL}$	$V_{CCB}=1.2V$		5.6			17		ns
		$V_{CCB}=1.5V\pm 0.1V$		4.7			16		ns
		$V_{CCB}=1.8V\pm 0.15V$		4.3			16		ns
		$V_{CCB}=2.5V\pm 0.2V$		3.9			15		ns
		$V_{CCB}=3.3V\pm 0.3V$		3.7			15		ns
Propagation delay from input ( $\overline{OE}$ ) to output (B)	$t_{PZH}$ $t_{PZL}$	$V_{CCB}=1.2V$		5.0			17		ns
		$V_{CCB}=1.5V\pm 0.1V$		4.3			16		ns
		$V_{CCB}=1.8V\pm 0.15V$		3.9			15		ns
		$V_{CCB}=2.5V\pm 0.2V$		3.6			15		ns
		$V_{CCB}=3.3V\pm 0.3V$		3.6			15		ns
Propagation delay from input ( $\overline{OE}$ ) to output (A)	$t_{PHZ}$ $t_{PLZ}$	$V_{CCB}=1.2V$		6.2			18		ns
		$V_{CCB}=1.5V\pm 0.1V$		5.2			17		ns
		$V_{CCB}=1.8V\pm 0.15V$		5.2			17		ns
		$V_{CCB}=2.5V\pm 0.2V$		4.3			16		ns
		$V_{CCB}=3.3V\pm 0.3V$		4.8			16		ns
Propagation delay from input ( $\overline{OE}$ ) to output (B)	$t_{PHZ}$ $t_{PLZ}$	$V_{CCB}=1.2V$		5.9			17		ns
		$V_{CCB}=1.5V\pm 0.1V$		5.1			17		ns
		$V_{CCB}=1.8V\pm 0.15V$		5.0			17		ns
		$V_{CCB}=2.5V\pm 0.2V$		4.7			16		ns
		$V_{CCB}=3.3V\pm 0.3V$		5.5			17		ns



## ■ SWITCHING CHARACTERISTICS (Cont.)

(Over recommended operating free-air temperature range,  $V_{CCA}=1.5V\pm0.1V$ , unless otherwise specified)

PARAMETER	SYMBOL	TEST CONDITIONS	$T_A=25^\circ\text{C}$			$T_A=-40\sim+125^\circ\text{C}$			UNIT
			MIN	TYP	MAX	MIN	TYP	MAX	
Propagation delay from input (A) to output (B)	$t_{PLH}$ $t_{PHL}$	$V_{CCB}=1.2V$		3.2			13		ns
		$V_{CCB}=1.5V\pm0.1V$	0.3		6.3	0.1		12.5	ns
		$V_{CCB}=1.8V\pm0.15V$	0.3		5.2	0.1		11.5	ns
		$V_{CCB}=2.5V\pm0.2V$	0.4		4.2	0.1		11	ns
		$V_{CCB}=3.3V\pm0.3V$	0.4		4.2	0.1		11	ns
Propagation delay from input (B) to output (A)	$t_{PLH}$ $t_{PHL}$	$V_{CCB}=1.2V$		3.3			13		ns
		$V_{CCB}=1.5V\pm0.1V$	0.7		6.3	0.1		12.5	ns
		$V_{CCB}=1.8V\pm0.15V$	0.5		6	0.1		12	ns
		$V_{CCB}=2.5V\pm0.2V$	0.4		5.7	0.1		12	ns
		$V_{CCB}=3.3V\pm0.3V$	0.3		5.6	0.1		12	ns
Propagation delay from input ( $\overline{OE}$ ) to output (A)	$t_{PZH}$ $t_{PZL}$	$V_{CCB}=1.2V$		4.9			13		ns
		$V_{CCB}=1.5V\pm0.1V$	1.4		9.6	0.1		12	ns
		$V_{CCB}=1.8V\pm0.15V$	1.1		9.5	0.1		11.5	ns
		$V_{CCB}=2.5V\pm0.2V$	0.7		9.4	0.1		11	ns
		$V_{CCB}=3.3V\pm0.3V$	0.4		9.4	0.1		11	ns
Propagation delay from input ( $\overline{OE}$ ) to output (B)	$t_{PZH}$ $t_{PZL}$	$V_{CCB}=1.2V$		4.5			13		ns
		$V_{CCB}=1.5V\pm0.1V$	1.4		9.6	0.1		12	ns
		$V_{CCB}=1.8V\pm0.15V$	1.1		7.7	0.1		10	ns
		$V_{CCB}=2.5V\pm0.2V$	0.9		5.8	0.1		8	ns
		$V_{CCB}=3.3V\pm0.3V$	0.9		5.6	0.1		8	ns
Propagation delay from input ( $\overline{OE}$ ) to output (A)	$t_{PHZ}$ $t_{PLZ}$	$V_{CCB}=1.2V$		5.6			13		ns
		$V_{CCB}=1.5V\pm0.1V$	1.8		10.2	0.1		13.5	ns
		$V_{CCB}=1.8V\pm0.15V$	1.5		10.2	0.1		13.5	ns
		$V_{CCB}=2.5V\pm0.2V$	1.3		10.2	0.1		13.5	ns
		$V_{CCB}=3.3V\pm0.3V$	1.6		10.2	0.1		13.5	ns
Propagation delay from input ( $\overline{OE}$ ) to output (B)	$t_{PHZ}$ $t_{PLZ}$	$V_{CCB}=1.2V$		5.2			13		ns
		$V_{CCB}=1.5V\pm0.1V$	1.9		10.3	0.1		12	ns
		$V_{CCB}=1.8V\pm0.15V$	1.9		9.1	0.1		11	ns
		$V_{CCB}=2.5V\pm0.2V$	1.4		7.4	0.1		9	ns
		$V_{CCB}=3.3V\pm0.3V$	1.2		7.6	0.1		9	ns

## ■ SWITCHING CHARACTERISTICS (Cont.)

(Over recommended operating free-air temperature range,  $V_{CCA}=1.8V\pm0.15V$ , unless otherwise specified)

PARAMETER	SYMBOL	TEST CONDITIONS	$T_A=25^\circ\text{C}$			$T_A=-40\sim+125^\circ\text{C}$			UNIT
			MIN	TYP	MAX	MIN	TYP	MAX	
Propagation delay from input (A) to output (B)	$t_{PLH}$ $t_{PHL}$	$V_{CCB}=1.2V$		2.9			12		ns
		$V_{CCB}=1.5V\pm0.1V$	0.1		6	0.1		12	ns
		$V_{CCB}=1.8V\pm0.15V$	0.1		4.9	0.1		11	ns
		$V_{CCB}=2.5V\pm0.2V$	0.1		3.9	0.1		10	ns
		$V_{CCB}=3.3V\pm0.3V$	0.3		3.9	0.1		10.	ns
Propagation delay from input (B) to output (A)	$t_{PLH}$ $t_{PHL}$	$V_{CCB}=1.2V$		3.0			12		ns
		$V_{CCB}=1.5V\pm0.1V$	0.6		5.3	0.1		11.5	ns
		$V_{CCB}=1.8V\pm0.15V$	0.5		4.9	0.1		11	ns
		$V_{CCB}=2.5V\pm0.2V$	0.3		4.6	0.1		10.6	ns
		$V_{CCB}=3.3V\pm0.3V$	0.3		4.5	0.1		10.5	ns
Propagation delay from input ( $\overline{OE}$ ) to output (A)	$t_{PZH}$ $t_{PZL}$	$V_{CCB}=1.2V$		4.4			12		ns
		$V_{CCB}=1.5V\pm0.1V$	1.0		7.4	0.1		9.5	ns
		$V_{CCB}=1.8V\pm0.15V$	1.0		7.3	0.1		9.3	ns
		$V_{CCB}=2.5V\pm0.2V$	0.6		7.3	0.1		9.3	ns
		$V_{CCB}=3.3V\pm0.3V$	0.4		7.2	0.1		9	ns
Propagation delay from input ( $\overline{OE}$ ) to output (B)	$t_{PZH}$ $t_{PZL}$	$V_{CCB}=1.2V$		4.1			12		ns
		$V_{CCB}=1.5V\pm0.1V$	1.2		9.2	0.1		11.5	ns
		$V_{CCB}=1.8V\pm0.15V$	1.0		7.4	0.1		9.5	ns
		$V_{CCB}=2.5V\pm0.2V$	0.8		5.3	0.1		7.5	ns
		$V_{CCB}=3.3V\pm0.3V$	0.8		4.6	0.1		6.5	ns
Propagation delay from input ( $\overline{OE}$ ) to output (A)	$t_{PHZ}$ $t_{PLZ}$	$V_{CCB}=1.2V$		5.4			12		ns
		$V_{CCB}=1.5V\pm0.1V$	1.6		8.6	0.1		11.5	ns
		$V_{CCB}=1.8V\pm0.15V$	1.8		8.7	0.1		12	ns
		$V_{CCB}=2.5V\pm0.2V$	1.3		8.7	0.1		12	ns
		$V_{CCB}=3.3V\pm0.3V$	1.6		8.7	0.1		12	ns
Propagation delay from input ( $\overline{OE}$ ) to output (B)	$t_{PHZ}$ $t_{PLZ}$	$V_{CCB}=1.2V$		5.0			12		ns
		$V_{CCB}=1.5V\pm0.1V$	1.7		9.9	0.1		12	ns
		$V_{CCB}=1.8V\pm0.15V$	1.6		8.7	0.1		11	ns
		$V_{CCB}=2.5V\pm0.2V$	1.2		6.9	0.1		8.5	ns
		$V_{CCB}=3.3V\pm0.3V$	1.0		6.9	0.1		8.5	ns

## ■ SWITCHING CHARACTERISTICS (Cont.)

(Over recommended operating free-air temperature range,  $V_{CCA}=2.5V\pm 0.2V$ , unless otherwise specified)

PARAMETER	SYMBOL	TEST CONDITIONS	$T_A=25^\circ C$			$T_A=-40\sim+125^\circ C$			UNIT
			MIN	TYP	MAX	MIN	TYP	MAX	
Propagation delay from input (A) to output (B)	$t_{PLH}$ $t_{PHL}$	$V_{CCB}=1.2V$		2.8			12		ns
		$V_{CCB}=1.5V\pm 0.1V$	0.1		5.7	0.1		11.5	ns
		$V_{CCB}=1.8V\pm 0.15V$	0.1		4.6	0.1		10.5	ns
		$V_{CCB}=2.5V\pm 0.2V$	0.2		3.5	0.1		9.5	ns
		$V_{CCB}=3.3V\pm 0.3V$	0.1		3.6	0.1		8.5	ns
Propagation delay from input (B) to output (A)	$t_{PLH}$ $t_{PHL}$	$V_{CCB}=1.2V$		2.7			12		ns
		$V_{CCB}=1.5V\pm 0.1V$	0.6		4.2	0.1		10	ns
		$V_{CCB}=1.8V\pm 0.15V$	0.4		3.9	0.1		9	ns
		$V_{CCB}=2.5V\pm 0.2V$	0.2		3.4	0.1		8	ns
		$V_{CCB}=3.3V\pm 0.3V$	0.2		3.3	0.1		7	ns
Propagation delay from input ( $\overline{OE}$ ) to output (A)	$t_{PZH}$ $t_{PZL}$	$V_{CCB}=1.2V$		4.0			12		ns
		$V_{CCB}=1.5V\pm 0.1V$	0.7		6.5	0.1		8.5	ns
		$V_{CCB}=1.8V\pm 0.15V$	0.7		5.2	0.1		7.5	ns
		$V_{CCB}=2.5V\pm 0.2V$	0.6		4.8	0.1		5.5	ns
		$V_{CCB}=3.3V\pm 0.3V$	0.4		4.8	0.1		5.5	ns
Propagation delay from input ( $\overline{OE}$ ) to output (B)	$t_{PZH}$ $t_{PZL}$	$V_{CCB}=1.2V$		3.8			12		ns
		$V_{CCB}=1.5V\pm 0.1V$	0.9		8.8	0.1		10.5	ns
		$V_{CCB}=1.8V\pm 0.15V$	0.8		7	0.1		9	ns
		$V_{CCB}=2.5V\pm 0.2V$	0.6		4.8	0.1		7	ns
		$V_{CCB}=3.3V\pm 0.3V$	0.6		4	0.1		5	ns
Propagation delay from input ( $\overline{OE}$ ) to output (A)	$t_{PHZ}$ $t_{PLZ}$	$V_{CCB}=1.2V$		4.7			12		ns
		$V_{CCB}=1.5V\pm 0.1V$	1.0		8.4	0.1		11	ns
		$V_{CCB}=1.8V\pm 0.15V$	1.0		8.4	0.1		11	ns
		$V_{CCB}=2.5V\pm 0.2V$	1.0		6.2	0.1		8.5	ns
		$V_{CCB}=3.3V\pm 0.3V$	1.0		6.6	0.1		9	ns
Propagation delay from input ( $\overline{OE}$ ) to output (B)	$t_{PHZ}$ $t_{PLZ}$	$V_{CCB}=1.2V$		4.5			12		ns
		$V_{CCB}=1.5V\pm 0.1V$	1.5		9.4	0.1		10.5	ns
		$V_{CCB}=1.8V\pm 0.15V$	1.3		8.2	0.1		9.5	ns
		$V_{CCB}=2.5V\pm 0.2V$	1.1		6.2	0.1		7.5	ns
		$V_{CCB}=3.3V\pm 0.3V$	0.9		5.2	0.1		7	ns

## ■ SWITCHING CHARACTERISTICS (Cont.)

(Over recommended operating free-air temperature range,  $V_{CCA}=3.3V\pm 0.3V$ , unless otherwise specified)

PARAMETER	SYMBOL	TEST CONDITIONS	$T_A=25^\circ C$			$T_A=-40\sim+125^\circ C$			UNIT
			MIN	TYP	MAX	MIN	TYP	MAX	
Propagation delay from input (A) to output (B)	$t_{PLH}$ $t_{PHL}$	$V_{CCB}=1.2V$		2.9			15		ns
		$V_{CCB}=1.5V\pm 0.1V$	0.1		5.6	0.1		11	ns
		$V_{CCB}=1.8V\pm 0.15V$	0.1		4.5	0.1		10	ns
		$V_{CCB}=2.5V\pm 0.2V$	0.1		3.3	0.1		9	ns
		$V_{CCB}=3.3V\pm 0.3V$	0.1		2.9	0.1		8.5	ns
Propagation delay from input (B) to output (A)	$t_{PLH}$ $t_{PHL}$	$V_{CCB}=1.2V$		2.6			15		ns
		$V_{CCB}=1.5V\pm 0.1V$	0.6		4.2	0.1		9.5	ns
		$V_{CCB}=1.8V\pm 0.15V$	0.4		3.4	0.1		8.5	ns
		$V_{CCB}=2.5V\pm 0.2V$	0.2		3	0.1		7.5	ns
		$V_{CCB}=3.3V\pm 0.3V$	0.1		2.8	0.1		6.5	ns
Propagation delay from input ( $\overline{OE}$ ) to output (A)	$t_{PZH}$ $t_{PZL}$	$V_{CCB}=1.2V$		3.8			15		ns
		$V_{CCB}=1.5V\pm 0.1V$	0.6		8.7	0.1		10.5	ns
		$V_{CCB}=1.8V\pm 0.15V$	0.6		5.2	0.1		8.5	ns
		$V_{CCB}=2.5V\pm 0.2V$	0.6		3.8	0.1		4.5	ns
		$V_{CCB}=3.3V\pm 0.3V$	0.4		3.8	0.1		4.5	ns
Propagation delay from input ( $\overline{OE}$ ) to output (B)	$t_{PZH}$ $t_{PZL}$	$V_{CCB}=1.2V$		3.7			15		ns
		$V_{CCB}=1.5V\pm 0.1V$	0.8		8.7	0.1		10.5	ns
		$V_{CCB}=1.8V\pm 0.15V$	0.6		6.8	0.1		8.5	ns
		$V_{CCB}=2.5V\pm 0.2V$	0.5		4.7	0.1		7.0	ns
		$V_{CCB}=3.3V\pm 0.3V$	0.5		3.8	0.1		4.5	ns
Propagation delay from input ( $\overline{OE}$ ) to output (A)	$t_{PHZ}$ $t_{PLZ}$	$V_{CCB}=1.2V$		4.8			15		ns
		$V_{CCB}=1.5V\pm 0.1V$	0.7		9.3	0.1		11	ns
		$V_{CCB}=1.8V\pm 0.15V$	0.7		8.3	0.1		10	ns
		$V_{CCB}=2.5V\pm 0.2V$	0.7		5.6	0.1		8.5	ns
		$V_{CCB}=3.3V\pm 0.3V$	0.7		6.6	0.1		9.5	ns
Propagation delay from input ( $\overline{OE}$ ) to output (B)	$t_{PHZ}$ $t_{PLZ}$	$V_{CCB}=1.2V$		5.3			15		ns
		$V_{CCB}=1.5V\pm 0.1V$	1.4		9.3	0.1		11	ns
		$V_{CCB}=1.8V\pm 0.15V$	1.2		8.1	0.1		9.5	ns
		$V_{CCB}=2.5V\pm 0.2V$	1.0		6.4	0.1		8	ns
		$V_{CCB}=3.3V\pm 0.3V$	0.8		6.2	0.1		7.5	ns

■ OPERATING CHARACTERISTIC (C<sub>L</sub>=0, f=10MHz, t<sub>r</sub>=t<sub>f</sub>=1ns, T<sub>A</sub>=25°C, unless otherwise specified)

PARAMETER		SYMBOL	TEST CONDITIONS	MIN	TYP	MAX	UNIT
Power Dissipation Capacitance (A to B)	Outputs enabled	C <sub>PDA</sub>	V <sub>CCA</sub> =V <sub>CCB</sub> =1.2V		1		pF
			V <sub>CCA</sub> =V <sub>CCB</sub> =1.5V		1		pF
			V <sub>CCA</sub> =V <sub>CCB</sub> =1.8V		1		pF
			V <sub>CCA</sub> =V <sub>CCB</sub> =2.5V		1.5		pF
			V <sub>CCA</sub> =V <sub>CCB</sub> =3.3V		2		pF
	Outputs disabled		V <sub>CCA</sub> =V <sub>CCB</sub> =1.2V		1		pF
			V <sub>CCA</sub> =V <sub>CCB</sub> =1.5V		1		pF
			V <sub>CCA</sub> =V <sub>CCB</sub> =1.8V		1		pF
			V <sub>CCA</sub> =V <sub>CCB</sub> =2.5V		1		pF
			V <sub>CCA</sub> =V <sub>CCB</sub> =3.3V		1		pF
Power Dissipation Capacitance (B to A)	Outputs enabled	V <sub>CCA</sub> =V <sub>CCB</sub> =1.2V		12		pF	
		V <sub>CCA</sub> =V <sub>CCB</sub> =1.5V		12.5		pF	
		V <sub>CCA</sub> =V <sub>CCB</sub> =1.8V		13		pF	
		V <sub>CCA</sub> =V <sub>CCB</sub> =2.5V		14		pF	
		V <sub>CCA</sub> =V <sub>CCB</sub> =3.3V		15		pF	
	Outputs disabled	V <sub>CCA</sub> =V <sub>CCB</sub> =1.2V		1		pF	
		V <sub>CCA</sub> =V <sub>CCB</sub> =1.5V		1		pF	
		V <sub>CCA</sub> =V <sub>CCB</sub> =1.8V		1		pF	
		V <sub>CCA</sub> =V <sub>CCB</sub> =2.5V		1		pF	
		V <sub>CCA</sub> =V <sub>CCB</sub> =3.3V		1		pF	
Power Dissipation Capacitance (A to B)	Outputs enabled	C <sub>PDB</sub>	V <sub>CCA</sub> =V <sub>CCB</sub> =1.2V		12		pF
			V <sub>CCA</sub> =V <sub>CCB</sub> =1.5V		12.5		pF
			V <sub>CCA</sub> =V <sub>CCB</sub> =1.8V		13		pF
			V <sub>CCA</sub> =V <sub>CCB</sub> =2.5V		14		pF
			V <sub>CCA</sub> =V <sub>CCB</sub> =3.3V		15		pF
	Outputs disabled		V <sub>CCA</sub> =V <sub>CCB</sub> =1.2V		1		pF
			V <sub>CCA</sub> =V <sub>CCB</sub> =1.5V		1		pF
			V <sub>CCA</sub> =V <sub>CCB</sub> =1.8V		1		pF
			V <sub>CCA</sub> =V <sub>CCB</sub> =2.5V		1		pF
			V <sub>CCA</sub> =V <sub>CCB</sub> =3.3V		1		pF
Power Dissipation Capacitance (B to A)	Outputs enabled	V <sub>CCA</sub> =V <sub>CCB</sub> =1.2V		1		pF	
		V <sub>CCA</sub> =V <sub>CCB</sub> =1.5V		1		pF	
		V <sub>CCA</sub> =V <sub>CCB</sub> =1.8V		1		pF	
		V <sub>CCA</sub> =V <sub>CCB</sub> =2.5V		1		pF	
		V <sub>CCA</sub> =V <sub>CCB</sub> =3.3V		2		pF	
	Outputs disabled	V <sub>CCA</sub> =V <sub>CCB</sub> =1.2V		1		pF	
		V <sub>CCA</sub> =V <sub>CCB</sub> =1.5V		1		pF	
		V <sub>CCA</sub> =V <sub>CCB</sub> =1.8V		1		pF	
		V <sub>CCA</sub> =V <sub>CCB</sub> =2.5V		1		pF	
		V <sub>CCA</sub> =V <sub>CCB</sub> =3.3V		1		pF	

■ Note: Power dissipation capacitance per transceiver.

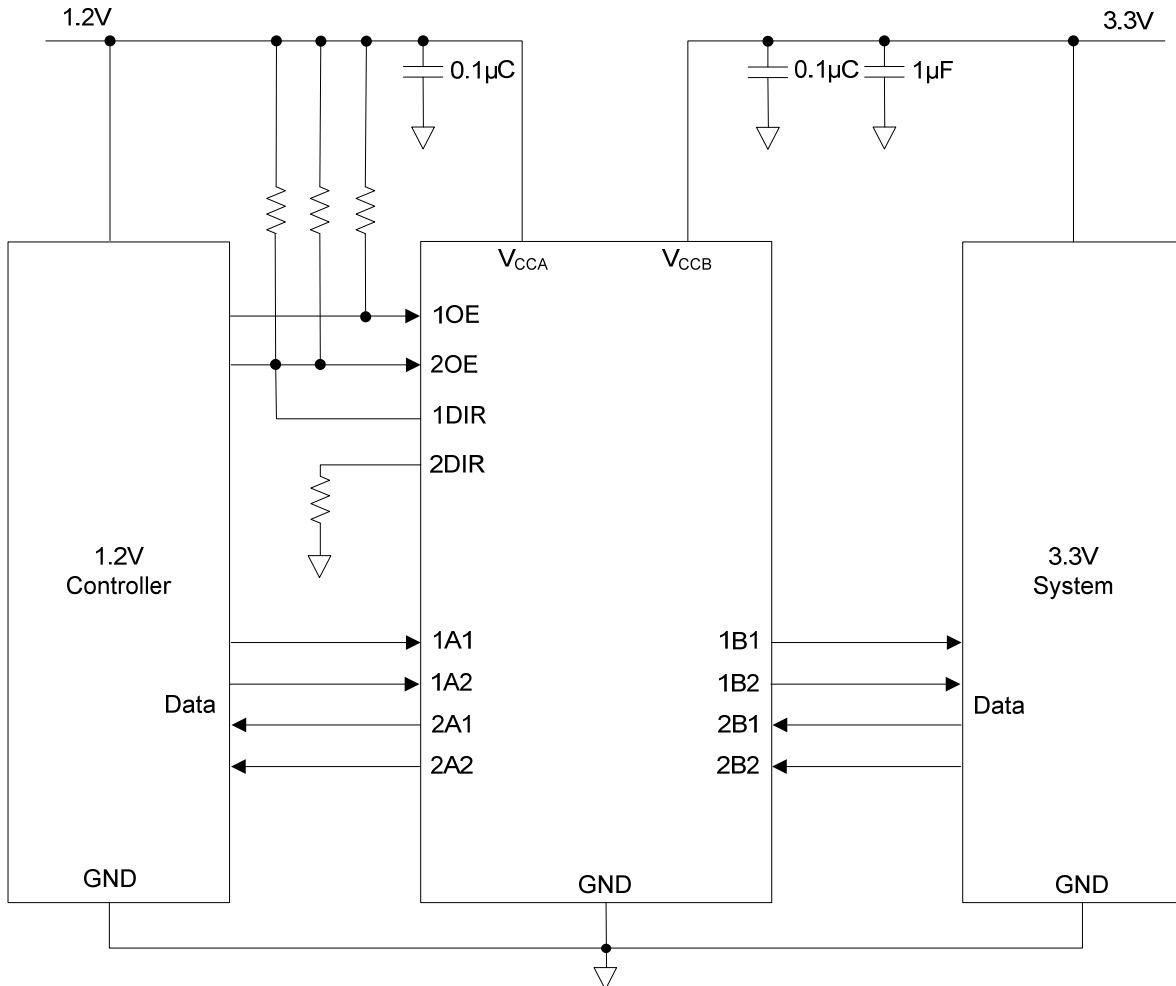
■ OPERATING CHARACTERISTICS (f=10MHz, T<sub>A</sub>=25°C, unless otherwise specified)

PARAMETER		SYMBOL	TEST CONDITIONS	MIN	TYP	MAX	UNIT
Input Capacitance	Control inputs	C <sub>IN</sub>	V <sub>CCA</sub> =V <sub>CCB</sub> =3.3V V <sub>IN</sub> =3.3V or GND		3.5		pF
Output Capacitance	A or B port	C <sub>IO</sub>	V <sub>CCA</sub> =V <sub>CCB</sub> =3.3V V <sub>IN</sub> =3.3V or GND		6		pF

## APPLICATION INFORMATION

The **U74AVC4T245** device can be used in level-translation applications for interfacing devices or systems operating at different interface voltages with one another. The **U74AVC4T245** device is ideal for use in applications where a push-pull driver is connected to the data I/Os.

## TYPICAL APPLICATION CIRCUIT

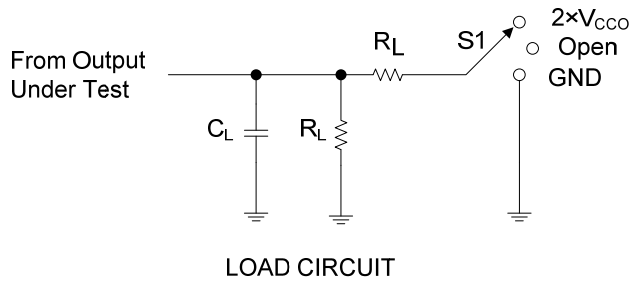


## POWER SUPPLY RECOMMENDATIONS

The **U74AVC4T245** device uses two separate configurable power-supply rails,  $V_{CCA}$  and  $V_{CCB}$ .  $V_{CCA}$  accepts any supply voltage from 1.2V to 3.6V and  $V_{CCB}$  accepts any supply voltage from 1.2V to 3.6V. The A port and B port are designed to track  $V_{CCA}$  and  $V_{CCB}$  respectively allowing for low-voltage bidirectional translation between any of the 1.2V, 1.5V, 1.8V, 2.5V and 3.3V voltage nodes.

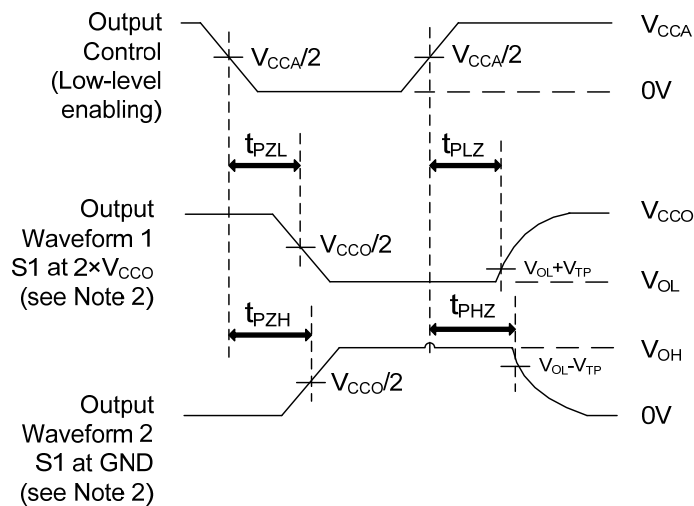
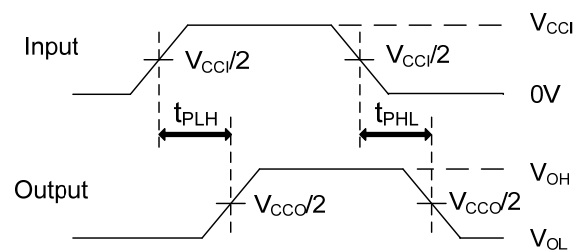
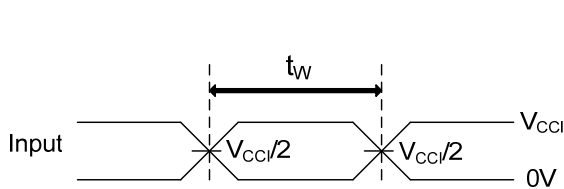
The output-enable ( $\overline{OE}$ ) input circuit is designed so that it is supplied by  $V_{CCA}$  and when the  $\overline{OE}$  input is high, all outputs are placed in the high-impedance state. To ensure the high-impedance state of the outputs during power up or power down, the  $\overline{OE}$  input pin must be tied to  $V_{CCA}$  through a pullup resistor and must not be enabled until  $V_{CCA}$  and  $V_{CCB}$  are fully ramped and stable. The minimum value of the pullup resistor to  $V_{CCA}$  is determined by the current-sinking capability of the driver.

## TEST CIRCUIT AND WAVEFORMS



TEST	S1
$t_{PD}$	Open
$t_{PLZ}/t_{PZL}$	$2 \times V_{CCO}$
$t_{PHZ}/t_{PZH}$	GND

$V_{CCO}$	$C_L$	$R_L$	$V_{TP}$
1.2V	15pF	2k $\Omega$	0.1V
1.5V $\pm$ 0.1V	15pF	2k $\Omega$	0.1V
1.8V $\pm$ 0.15V	15pF	2k $\Omega$	0.15V
2.5V $\pm$ 0.2V	15pF	2k $\Omega$	0.15V
3.3V $\pm$ 0.3V	15pF	2k $\Omega$	0.3V



Note:  $C_L$  includes probe and jig capacitance.

UTC assumes no responsibility for equipment failures that result from using products at values that exceed, even momentarily, rated values (such as maximum ratings, operating condition ranges, or other parameters) listed in products specifications of any and all UTC products described or contained herein. UTC products are not designed for use in life support appliances, devices or systems where malfunction of these products can be reasonably expected to result in personal injury. Reproduction in whole or in part is prohibited without the prior written consent of the copyright owner. UTC reserves the right to make changes to information published in this document, including without limitation specifications and product descriptions, at any time and without notice. This document supersedes and replaces all information supplied prior to the publication hereof.