



U74HC4049

CMOS IC

HEX INVERTING HIGH-TO-LOW LEVEL SHIFTER

DESCRIPTION

The **U74HC4049** is a high speed Si-gate CMOS device which contains six independent inverters and they perform the function $Y = \overline{A}$.

On the input circuit of this device has a modified input protection structure which has no diode connected to V_{CC} . Input voltages of up to 15-V may therefore be used.

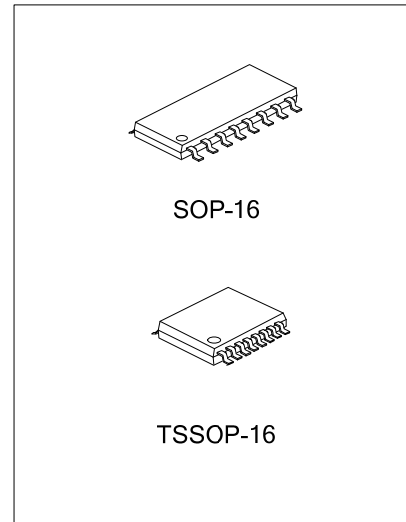
This feature enables the inverters to be used as logic level translators, which will convert high level logic to low level logic, while operating from a low voltage power supply. For example 15-V logic can be converted down to 2-V logic. At the same time each part can be used as a simple inverter without level translation.

FEATURES

- * Inputs accept voltages to 15V
- * Low power dissipation
- * Enable to be used as a logic level translator

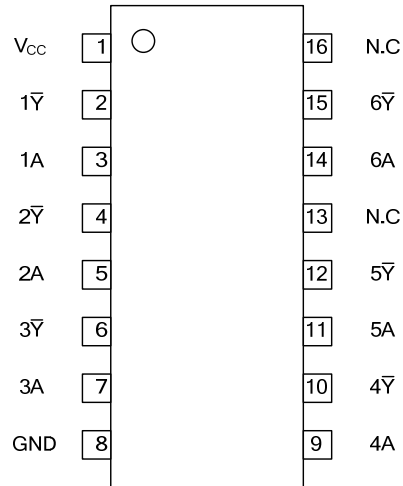
ORDERING INFORMATION

Ordering Number		Package	Packing
Lead Free	Halogen Free		
U74HC4049L-S16-R	U74HC4049G-S16-R	SOP-16	Tape Reel
U74HC4049L-S16-T	U74HC4049G-S16-T	SOP-16	Tube
U74HC4049L-P16-R	U74HC4049G-P16-R	TSSOP-16	Tape Reel
U74HC4049L-P16-T	U74HC4049G-P16-T	TSSOP-16	Tube



<p>U74HC4049L-S16-R</p> <p>(1) Packing Type (2) Package Type (3) Lead Free</p>	<p>(1) T: Tube, R: Tape Reel (2) S16: SOP-16, P16: TSSOP-16 (3) L: Lead Free, G: Halogen Free</p>
--	---

■ PIN CONFIGURATION



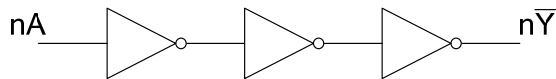
Note: The N.C is stand for that the pin is not connected.

■ FUNCTION TABLE

INPUT(nA)	OUTPUT(nY-bar)
L	H
H	L

Note: H: HIGH voltage level; L: LOW voltage level

■ LOGIC DIAGRAM (positive logic)



■ ABSOLUTE MAXIMUM RATING

PARAMETER	SYMBOL	RATINGS	UNIT
Supply Voltage	V_{CC}	-0.5 ~ +7.0	V
Input Voltage	V_{IN}	-0.5 ~ +16	V
V_{CC} or GND Current	I_{CC}	±50	mA
Continuous Output Current ($V_{OUT}=0$ to V_{CC})	I_{OUT}	±25	mA
Input Clamp Current ($V_{IN}<-0.5$)	I_{IK}	-20	mA
Output Clamp Current ($V_{OUT}<-0.5$ or $V_{OUT}> V_{CC}+0.5$)	I_{OK}	±20	mA
Storage Temperature Range	T_{STG}	-65 ~ +150	°C

Note: Absolute maximum ratings are those values beyond which the device could be permanently damaged. Absolute maximum ratings are stress ratings only and functional device operation is not implied.

■ RECOMMENDED OPERATING CONDITIONS

PARAMETER	SYMBOL	TEST CONDITIONS	MIN	TYP	MAX	UNIT
Supply Voltage	V_{CC}	Operating	2.0	5.0	6.0	V
Input Voltage	V_{IN}		0		15	V
Output Voltage	V_{OUT}	High or low state	0		V_{CC}	V
Operating Temperature	T_A		-40	+25	125	°C
Input Transition Rise or Fall Rate	$\Delta t/\Delta v$	$V_{CC}=2.0V$			1000	ns/V
		$V_{CC}=4.5V$			500	ns/V
		$V_{CC}=6.0V$			400	ns/V

■ ELECTRICAL CHARACTERISTICS ($T_A = 25^\circ C$, unless otherwise specified)

PARAMETER	SYMBOL	TEST CONDITIONS	MIN	TYP	MAX	UNIT
High-level Input Voltage	V_{IH}	$V_{CC}=2.0V$	1.5	1.3		V
		$V_{CC}=4.5V$	3.15	2.4		V
		$V_{CC}=6.0V$	4.2	3.1		V
Low-level Input Voltage	V_{IL}	$V_{CC}=2.0V$		0.7	0.5	V
		$V_{CC}=4.5V$		1.8	1.35	V
		$V_{CC}=6.0V$		2.3	1.8	V
High-Level Output Voltage	V_{OH}	$V_{CC}=2.0V, I_{OL}=-20\mu A$	1.9	2.0		V
		$V_{CC}=4.5V, I_{OL}=-20\mu A$	4.4	4.5		V
		$V_{CC}=6.0V, I_{OL}=-20\mu A$	5.9	6.0		V
		$V_{CC}=4.5V, I_{OL}=-4.0mA$	3.98			V
		$V_{CC}=6.0V, I_{OL}=-5.2mA$	5.48			V
Low-Level Output Voltage	V_{OL}	$V_{CC}=2.0V, I_{OL}=20\mu A$			0.1	V
		$V_{CC}=4.5V, I_{OL}=20\mu A$			0.1	V
		$V_{CC}=6.0V, I_{OL}=20\mu A$			0.1	V
		$V_{CC}=4.5V, I_{OL}=4.0mA$			0.26	V
		$V_{CC}=6.0V, I_{OL}=5.2mA$			0.26	V
Input Leakage Current	$I_{I(LEAK)}$	$V_{CC}=6.0V, V_{IN}=V_{CC}$ or GND			±0.1	μA
		$V_{CC}=6.0V, V_{IN}=15V$			±0.5	μA
Quiescent Supply Current	I_{CC}	$V_{CC}=6.0V, V_{IN}=15V$ or GND, $I_{OUT}=0$			2.0	μA
Input Capacitance	C_I			3.5		pF

■ SWITCHING CHARACTERISTICS ($T_A=25^\circ\text{C}$, Input $t_R/t_F=6\text{ns}$)

See Fig. 1 and Fig. 2 for test circuit and waveforms.

PARAMETER	SYMBOL	TEST CONDITIONS	MIN	TYP	MAX	UNIT
Propagation delay from input (nA) to output($n\bar{Y}$)	t_{PD}	$V_{CC}=2.0\text{V}$, $C_L=50\text{pF}$		28	85	ns
		$V_{CC}=4.5\text{V}$, $C_L=50\text{pF}$		10	17	ns
		$V_{CC}=5.0\text{V}$, $C_L=15\text{pF}$		8		ns
		$V_{CC}=6.0\text{V}$, $C_L=50\text{pF}$		8	14	ns
Output transition time ($n\bar{Y}$)	t_t	$V_{CC}=2.0\text{V}$, $C_L=50\text{pF}$		19	75	ns
		$V_{CC}=4.5\text{V}$, $C_L=50\text{pF}$		7	15	ns
		$V_{CC}=6.0\text{V}$, $C_L=50\text{pF}$		6	13	ns

■ OPERATING CHARACTERISTICS ($T_A=25^\circ\text{C}$)

PARAMETER	SYMBOL	TEST CONDITIONS	MIN	TYP	MAX	UNIT
Power Dissipation Capacitance	C_{PD}	$V_{IN}=\text{GND to } V_{CC}$, $f=1\text{MHz}$, $C_L=50\text{pF}$		14		pF

■ TEST CIRCUIT AND WAVEFORMS

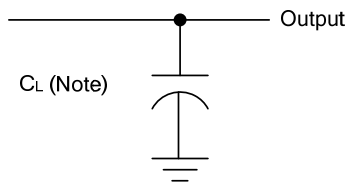


Fig. 1 Load circuitry for switching times

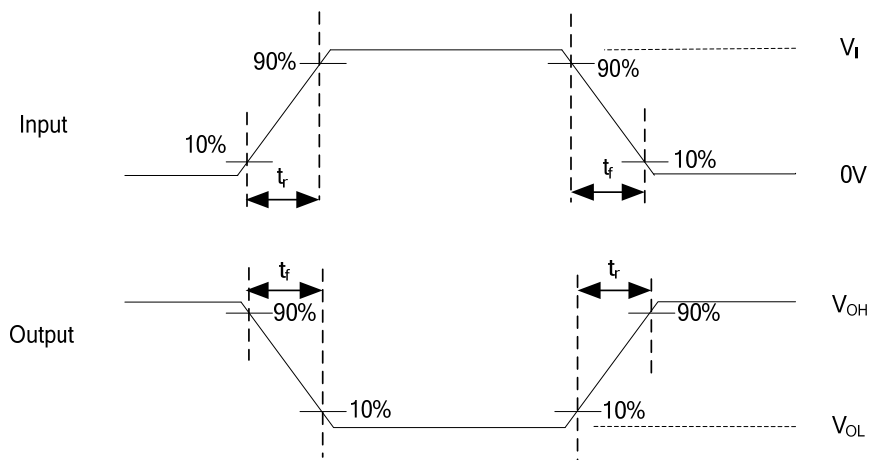
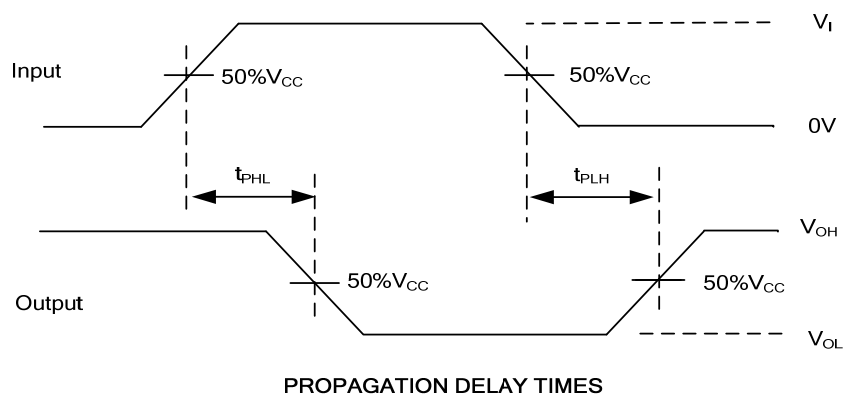


Fig. 2 Propagation delay from input(nA) to output(n \bar{Y}) and Output transition time

Note: C_L includes probe and jig capacitance.

All input pulses are supplied by generators having the following characteristics: PRR $\leq 10\text{MHz}$, $Z_O = 50\Omega$.

UTC assumes no responsibility for equipment failures that result from using products at values that exceed, even momentarily, rated values (such as maximum ratings, operating condition ranges, or other parameters) listed in products specifications of any and all UTC products described or contained herein. UTC products are not designed for use in life support appliances, devices or systems where malfunction of these products can be reasonably expected to result in personal injury. Reproduction in whole or in part is prohibited without the prior written consent of the copyright owner. The information presented in this document does not form part of any quotation or contract, is believed to be accurate and reliable and may be changed without notice.