



# U74HC86

CMOS IC

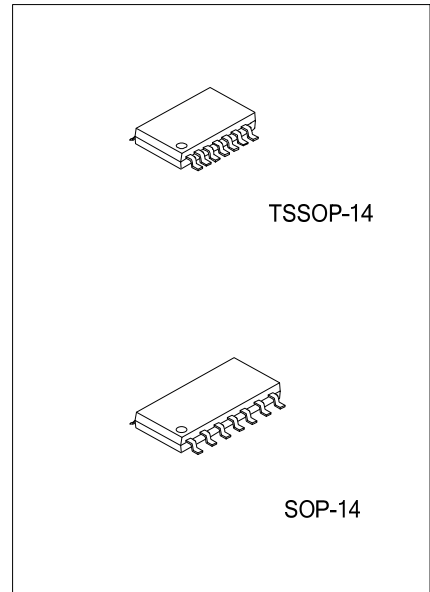
## QUAD 2-INPUT EXCLUSIVE-OR GATES

### DESCRIPTION

The **U74HC86** contains four independent 2-input exclusive-or gates, it provides the Boolean function  $Y=A\oplus B$  or  $Y=\overline{A}B+A\overline{B}$  in positive logic.

### FEATURES

\* Operation Voltage range: 2~6V

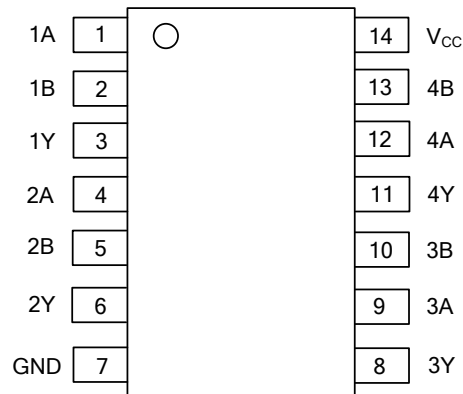


### ORDERING INFORMATION

Ordering Number	Package	Packing
U74HC86G-S14-R	SOP-14	Tape Reel
U74HC86G-P14-R	TSSOP-14	Tape Reel

<p>U74HC86G-P14-T</p> <p>(1)Packing Type (2)Package Type (3)Halogen Free</p>	<p>(1) R: Tape Reel (2) P14: TSSOP-14, S14: SOP-14 (3) G: Halogen Free</p>
--	--

■ PIN CONFIGURATION

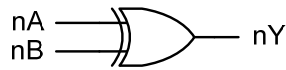


■ FUNCTION TABLE

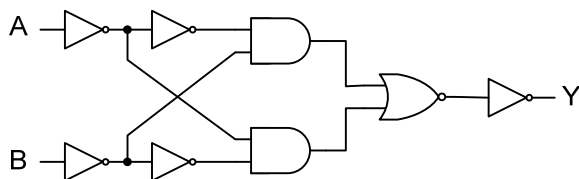
INPUTS(A)	INPUTS(B)	OUTPUT(Y)
L	L	L
L	H	H
H	L	H
H	H	L

Note: H: HIGH voltage level; L: LOW voltage level.

■ LOGIC SYMBOL



■ LOGIC DIAGRAM



## ■ ABSOLUTE MAXIMUM RATING

PARAMETER	SYMBOL	RATINGS	UNIT
Supply Voltage	$V_{CC}$	-0.5~7	V
$V_{CC}$ or GND Current	$I_{CC}$	$\pm 50$	mA
Output Current	$I_{OUT}$	$\pm 25$	mA
Input Clamp Current	$I_{IK}$	$\pm 20$	mA
Output Clamp Current	$I_{OK}$	$\pm 20$	mA
Ambient Operating Temperature	$T_{OPR}$	-40 ~ + 85	$^{\circ}C$
Storage Temperature	$T_{STG}$	-65 ~ + 150	$^{\circ}C$

Note: Absolute maximum ratings are those values beyond which the device could be permanently damaged.  
 Absolute maximum ratings are stress ratings only and functional device operation is not implied.

## ■ THERMAL DATA

PARAMETER	SYMBOL	RATINGS	UNIT
Junction to Ambient	SOP-14	$\theta_{JA}$	$^{\circ}C/W$
	TSSOP-14		
		113	

## ■ RECOMMENDED OPERATING CONDITIONS

PARAMETER	SYMBOL	TEST CONDITIONS	MIN	TYP	MAX	UNIT
Supply Voltage	$V_{CC}$		2	5	6	V
High-level Input Voltage	$V_{IH}$	$V_{CC}=2.0V$	1.5			V
		$V_{CC}=4.5V$	3.15			
		$V_{CC}=6.0V$	4.2			
Low-level Input Voltage	$V_{IL}$	$V_{CC}=2.0V$	0		0.5	V
		$V_{CC}=4.5V$	0		1.35	
		$V_{CC}=6.0V$	0		1.8	
Input Voltage	$V_{IN}$		0		$V_{CC}$	V
Output Voltage	$V_{OUT}$	High or low state	0		$V_{CC}$	V
Input Rise or Fall Times	$t_R, t_F$	$V_{CC}=2.0V$			1	$\mu s$
		$V_{CC}=4.5V$			0.5	
		$V_{CC}=6.0V$			0.4	

## ■ ELECTRICAL CHARACTERISTICS ( $T_a=25^{\circ}C$ )

PARAMETER	SYMBOL	TEST CONDITIONS	MIN	TYP	MAX	UNIT
Output Voltage High-Level	$V_{OH}$	$V_{CC}=2.0V, I_{OH}=-20\mu A, V_{IN}=V_{IH}$ or $V_{IL}$	1.9	1.998		V
		$V_{CC}=4.5V, I_{OH}=-20\mu A, V_{IN}=V_{IH}$ or $V_{IL}$	4.4	4.499		
		$V_{CC}=6.0V, I_{OH}=-20\mu A, V_{IN}=V_{IH}$ or $V_{IL}$	5.9	5.999		
		$V_{CC}=4.5V, I_{OH}=-4mA, V_{IN}=V_{IH}$ or $V_{IL}$	3.98	4.3		
		$V_{CC}=6.0V, I_{OH}=-5.2mA, V_{IN}=V_{IH}$ or $V_{IL}$	5.48	5.8		
Output Voltage Low-Level	$V_{OL}$	$V_{CC}=2.0V, I_{OL}=20\mu A, V_{IN}=V_{IH}$ or $V_{IL}$		2	100	mV
		$V_{CC}=4.5V, I_{OL}=20\mu A, V_{IN}=V_{IH}$ or $V_{IL}$		1	100	
		$V_{CC}=6.0V, I_{OL}=20\mu A, V_{IN}=V_{IH}$ or $V_{IL}$		1	100	
		$V_{CC}=4.5V, I_{OL}=4mA, V_{IN}=V_{IH}$ or $V_{IL}$		170	260	
		$V_{CC}=6.0V, I_{OL}=5.2mA, V_{IN}=V_{IH}$ or $V_{IL}$		150	260	
Input Leakage Current	$I_{I(LEAK)}$	$V_{CC}=6.0V, V_{IN}=V_{CC}$ or 0		$\pm 0.1$	$\pm 100$	nA
Quiescent Supply Current	$I_Q$	$V_{CC}=6.0V, V_{IN}=V_{CC}$ or 0, $I_{OUT}=0$			2	$\mu A$
Input Capacitance	$C_I$	$V_{CC}=2.0V\sim 6.0V$		3	10	pF

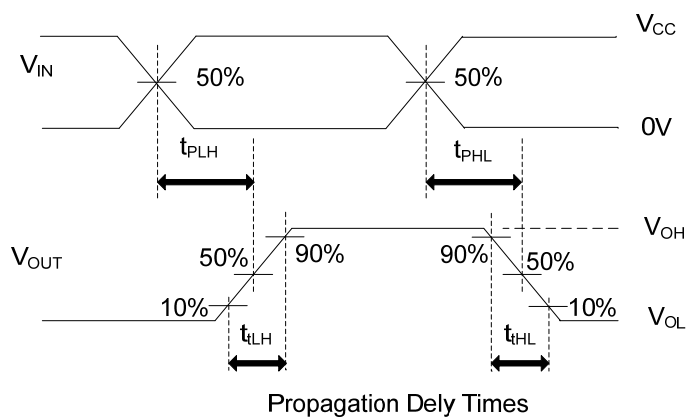
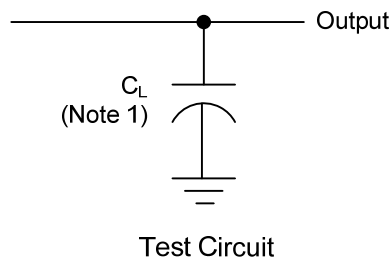
■ SWITCHING CHARACTERISTICS (see test circuit and waveforms)

PARAMETER	SYMBOL	TEST CONDITIONS	MIN	TYP	MAX	UNIT
Propagation Delay from Input (A or B) to Output(Y)	$t_{PLH}/t_{PHL}$	$V_{CC}=2.0V, C_L=50pF$		40	100	ns
		$V_{CC}=4.5V, C_L=50pF$		12	20	
		$V_{CC}=6.0V, C_L=50pF$		10	17	
To Output(Y)	$t_t$	$V_{CC}=2.0V, C_L=50pF$		28	75	ns
		$V_{CC}=4.5V, C_L=50pF$		8	15	
		$V_{CC}=6.0V, C_L=50pF$		6	13	

■ OPERATING CHARACTERISTICS ( $T_a=25^{\circ}C$ )

PARAMETER	SYMBOL	TEST CONDITIONS	MIN	TYP	MAX	UNIT
Power Dissipation Capacitance	$C_{PD}$	No load		35		pF

■ TEST CIRCUIT AND WAVEFORMS(Cont.)



- Note: 1.  $C_L$  includes probe and jig capacitance.  
 2.  $PRR \leq 1\text{MHz}$ ,  $Z_o = 50\Omega$ ,  $t_R = 6\text{ns}$ ,  $t_F = 6\text{ns}$ .

UTC assumes no responsibility for equipment failures that result from using products at values that exceed, even momentarily, rated values (such as maximum ratings, operating condition ranges, or other parameters) listed in products specifications of any and all UTC products described or contained herein. UTC products are not designed for use in life support appliances, devices or systems where malfunction of these products can be reasonably expected to result in personal injury. Reproduction in whole or in part is prohibited without the prior written consent of the copyright owner. The information presented in this document does not form part of any quotation or contract, is believed to be accurate and reliable and may be changed without notice.