



a Penn Central unit

UDN-2935Z AND UDN-2950Z BIPOLAR HALF-BRIDGE MOTOR DRIVERS

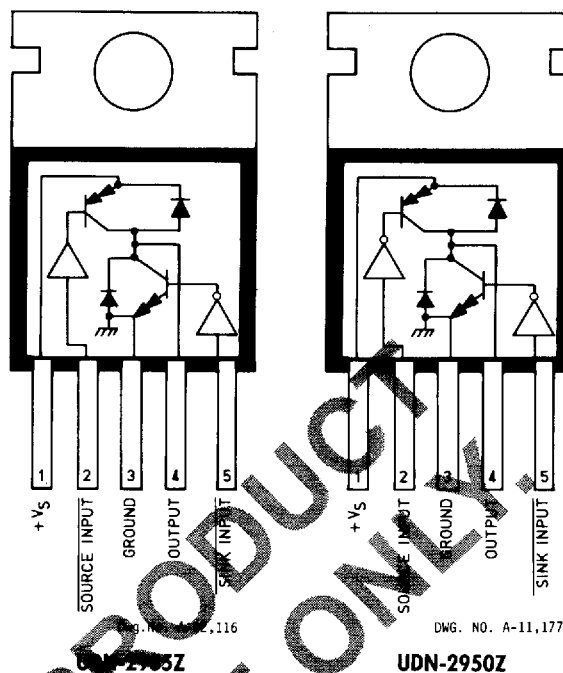
FEATURES

- 3.5 A Peak Output
- 37 V Min. Output Breakdown
- Output Transient Protection
- Tri-State Outputs
- TTL, CMOS, PMOS, NMOS Compatible Inputs
- Internal Thermal Shutdown
- High-Speed Chopper (to 100 kHz)
- UDN-2935Z Replaces SG3635P
- UDN-2950Z Replaces UDN-2949Z, SN75605
- TO-220 Style Packages

BOTH Type UDN-2935Z and UDN-2950Z integrated circuits are designed for servo-motor applications using pulse-width modulation. These two high-current, monolithic half-bridge motor drivers combine a sink-and-source driver with diode transient protection, input gain, level shifting, logic stages, and a voltage regulator for single-supply operation.

The UDN-2935Z output goes high with an active low input at pin 2; it is especially desirable in NMOS microprocessor applications. The UDN-2950Z output goes high with an active high input at pin 2; its inputs can be tied together for single-wire control. The input circuitry of both devices is compatible with TTL and low-voltage CMOS, PMOS, and NMOS logic. Both ICs have logic lockout (tri-state output) that prevents source and sink drivers from turning ON simultaneously.

In typical applications, the chopper drive mode is characterized by low power-dissipation levels, low saturation voltages, and short chopper-storage times for the sink drivers. The motor drivers can be used in pairs for full-bridge operation, or as triplets in three-phase brushless d.c. motor-drive applications. They can also be teamed with the Sprague



Electric UCN-4202A stepper motor translator/driver for bipolar d.c. stepper motor control (see Engineering Bulletin 26184).

The motor drivers' single-chip construction and power-tab TO-220 package enable cost-effective and reliable system designs supported by excellent power-dissipation ratings, minimum size, and ease of installation; because the package's heat tab is at ground potential, several devices can share a common heat sink without insulating hardware.

The Type UDN-2950Z half-bridge motor driver is an improved version of the popular Sprague Type UDN-2949Z, described in Engineering Bulletin 29318. The new driver has a higher output-breakdown rating, logic lockout, and an internal high-temperature shutdown that is triggered at approximately 175°C.

SEMICONDUCTOR DIVISION
SPRAGUE ELECTRIC COMPANY

115 Northeast Cutoff, WORCESTER, MASS. 01606

UDN-2935Z AND UDN-2950Z
BIPOLAR HALF-BRIDGE MOTOR DRIVERS

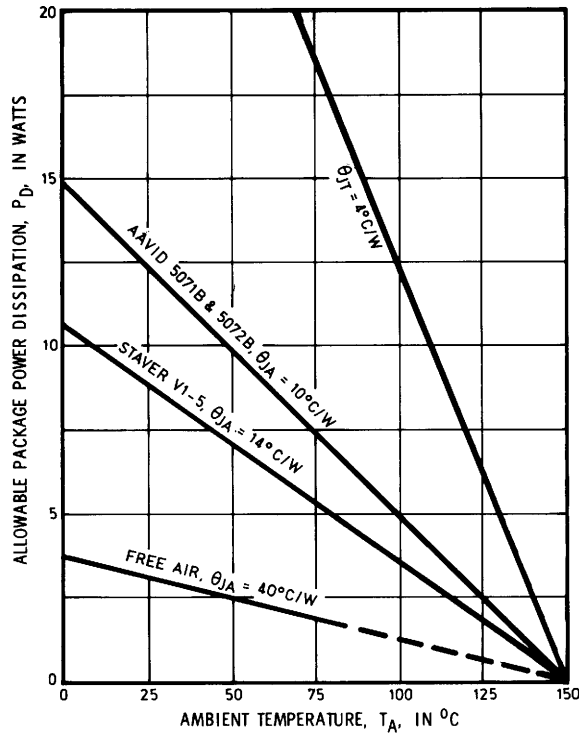
ENGINEERING
BULLETIN
29184

**UDN-2935Z AND UDN-2950Z
BIPOLAR HALF-BRIDGE MOTOR DRIVERS**

ABSOLUTE MAXIMUM RATINGS

Supply Voltage Range, V_S	8.0 V to 35 V
Output Voltage Range, V_{OUT}	- 2.0 V to $V_S + 2.0$ V
Input Voltage Range, V_{IN}	- 0.3 V to + 7.0 V
Peak Output Current (100 ms, 10% d-c), I_{OP}	± 3.5 A
Continuous Output Current, I_{OUT}	± 2.0 A
Package Power Dissipation, P_D	See Graph
Operating Temperature Range, T_A	- 20°C to + 85°C
Storage Temperature Range, T_S	- 55°C to + 85°C

**ALLOWABLE POWER DISSIPATION
AS A FUNCTION OF AMBIENT TEMPERATURE**



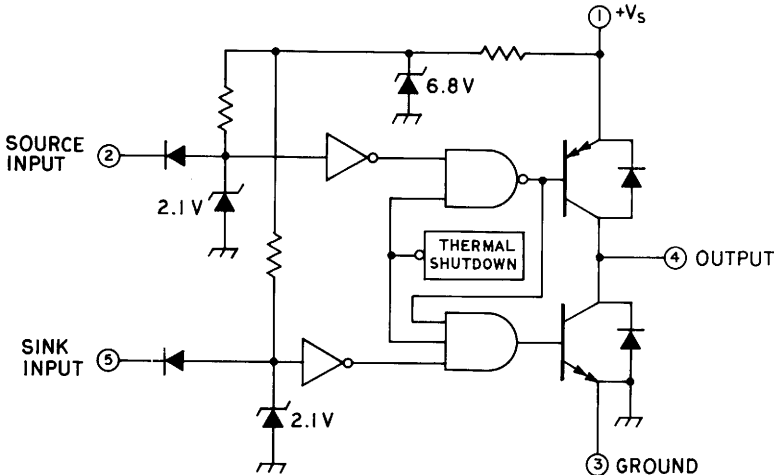
DWG. NO. A-12,000A

TRUTH TABLE

Source Driver, Pin 2	Sink Driver, Pin 5	Output, Pin 4	
		UDN-2935Z	UDN-2950Z
Low	Low	High	Low
Low	High	High	High Z
High	Low	Low	High
High	High	High Z	High

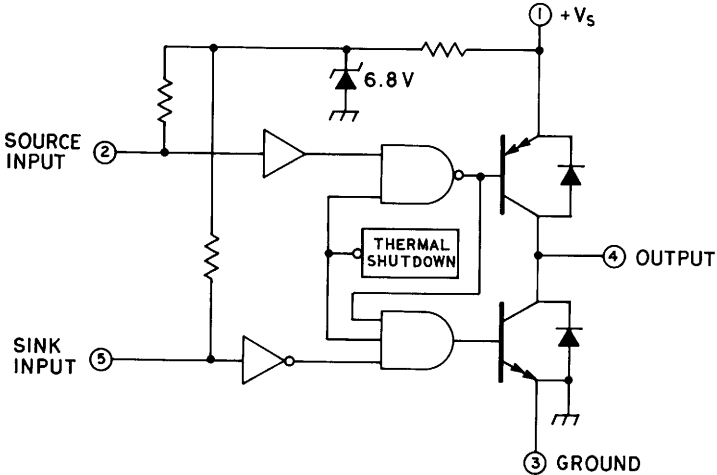
FUNCTIONAL BLOCK DIAGRAMS

UDN-2935Z



Dwg. No. A-12.113

UDN-2950Z



Dwg. No. A-12.112

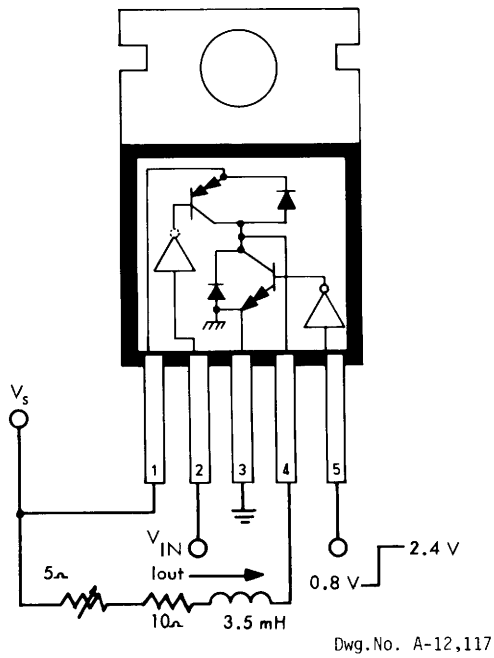
**UDN-2935Z AND UDN-2950Z
BIPOLAR HALF-BRIDGE MOTOR DRIVERS**

ELECTRICAL CHARACTERISTICS at $T_A = +25^\circ\text{C}$, $T_{TAB} = +70^\circ\text{C}$, $V_s = 35\text{ V}$ (unless otherwise noted)

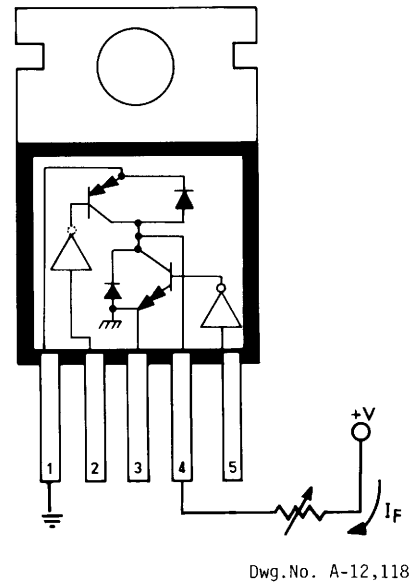
Characteristic	Source Driver Input, Pin 2		Sink Driver Input, Pin 5	Output, Pin 4	Other	Limits		
	UDN-2935Z	UDN-2950Z				Min.	Max.	Units
Output Leakage Current	2.4 V	0.8 V	2.4 V	0 V	—	—	- 500	μA
	2.4 V	0.8 V	2.4 V	35 V	—	—	500	μA
Output Sustaining Voltage	2.4 V	0.8 V	0.8 to 2.4 V	2.0 A	Fig. 1	35	—	V
Output Saturation Voltage	0.8 V	2.4 V	2.4 V	-2.0 A	—	33	—	V
	2.4 V	0.8 V	0.8 V	2.0 A	—	—	2.0	V
Output Source Current	0.8 V	2.4 V	2.4 V	—	—	-2.0	—	A
Output Sink Current	2.4 V	0.8 V	0.8 V	—	—	2.0	—	A
Input Open-Circuit Voltage	-250 μA	-250 μA	-250 μA	—	—	—	7.5	V
Input Current	—	2.4 V	2.4 V	NC	—	—	-700	μA
	2.4 V	—	2.4 V	NC	—	—	10	μA
	0.8 V	0.8 V	0.8 V	NC	—	—	-1.6	mA
Propagation Delay	2.4 V	0.8 V	0.8 to 2.4 V	2.0 A	—	—	750	ns
	0.8 to 2.4 V	2.4 to 0.8 V	2.4 V	2.0 A	—	—	2.0	μs
Clamp Diode Forward Voltage	NC	NC	NC	2.0 A	Fig. 2	—	2.2	V
Supply Current	0.8 V	2.4 V	NC	NC	—	—	35	mA

NOTE: Positive (negative) current is defined as going into (coming out of) the specified device pin.

TEST FIGURE 1



TEST FIGURE 2



APPLICATION NOTES

It should be noted that an additional power dissipation component may arise from crossover currents flowing from supply to ground when current direction through the load is reversed. This is due to differences in the switching speeds between the source and sink drivers. Although the internal logic lockout protects these devices from catastrophic failure, the crossover power component can cause device operation at substantially higher junction temperatures.

If timing conditions are ignored, the magnitude of this power can be approximated as:

$$P_D = V_s \times I_C \times t \times f$$

where V_s = supply voltage

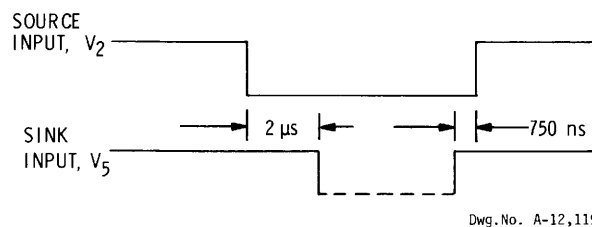
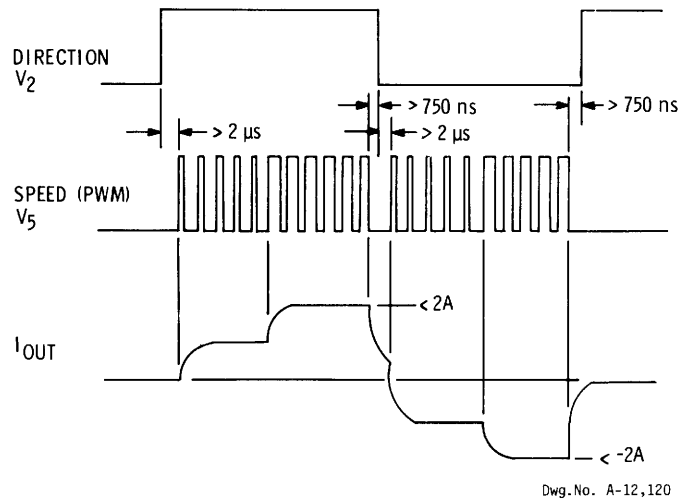
I_C = crossover current (≈ 3.5 A max.)

t = crossover current duration (≈ 1 μ s)

f = frequency of direction change

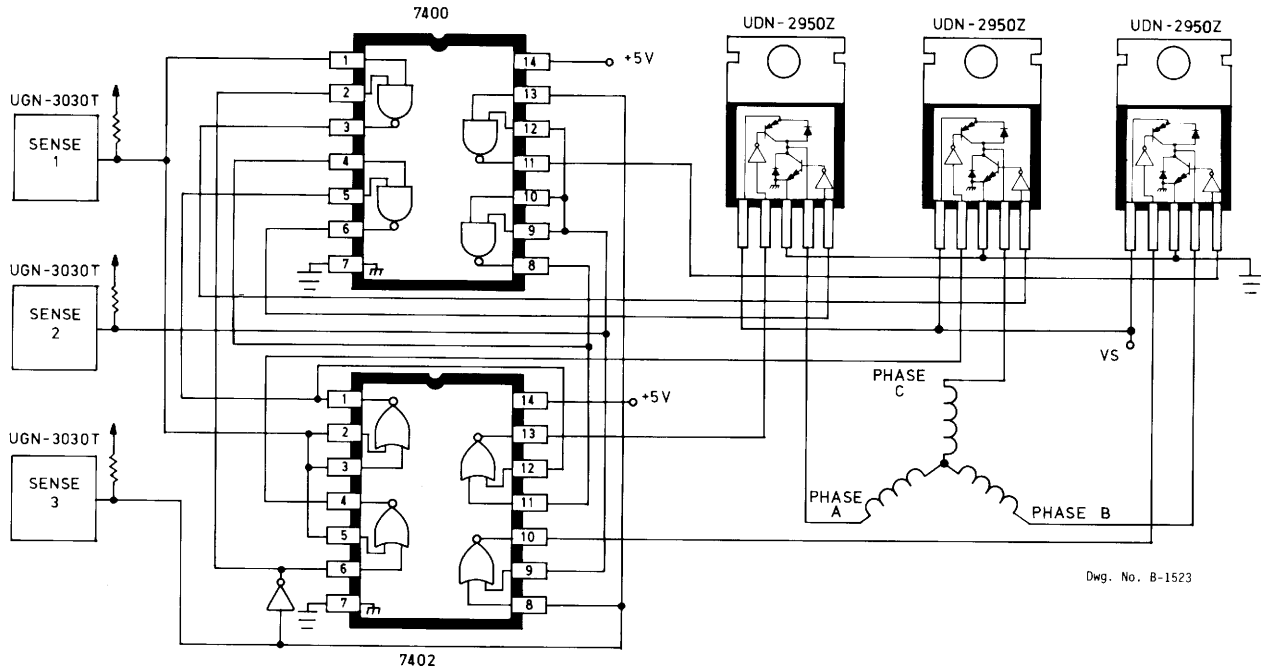
In some applications (high switching speeds or high package power dissipation), it is recommended that the inputs be driven separately, and that the sink driver not be turned ON for at least 2 μ s (maximum source t_{PD}) after the source driver input is turned OFF. The sink driver should be turned OFF at least 750 ns (maximum sink t_{PD}) before the source driver is turned ON.

RECOMMENDED TIMING CONDITIONS (UDN-2950Z shown)

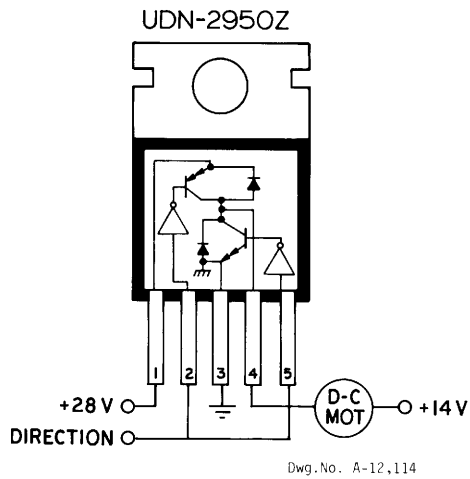


TYPICAL APPLICATIONS

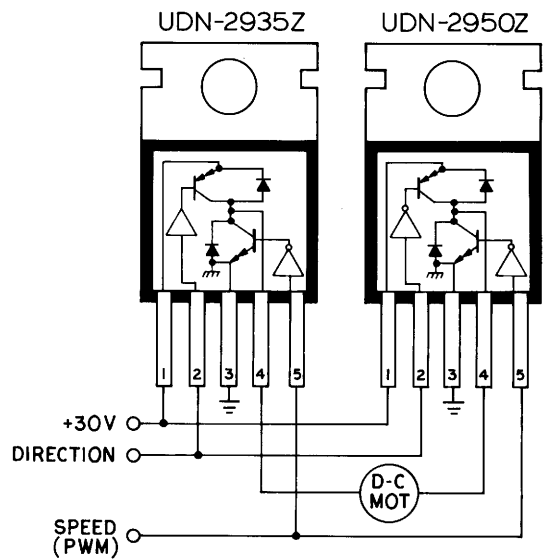
3-PHASE BRUSHLESS D-C MOTOR DRIVE



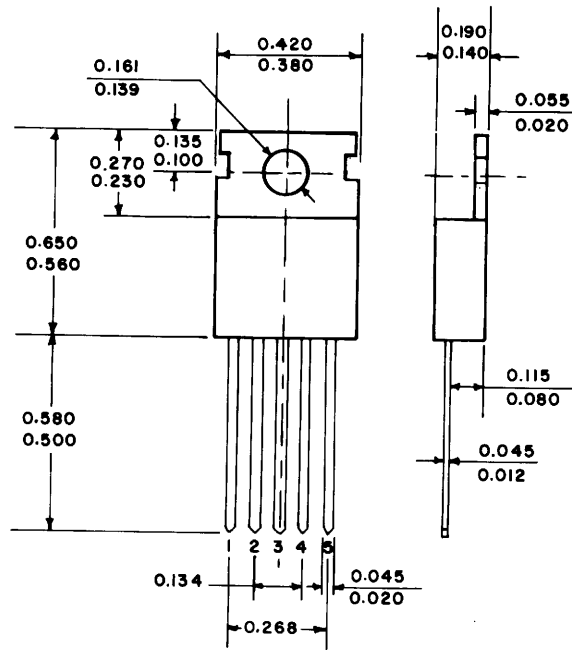
**SINGLE-WINDING D-C
OR STEPPER MOTOR DRIVE**



**FULL-BRIDGE D-C
SERVO MOTOR DRIVE**

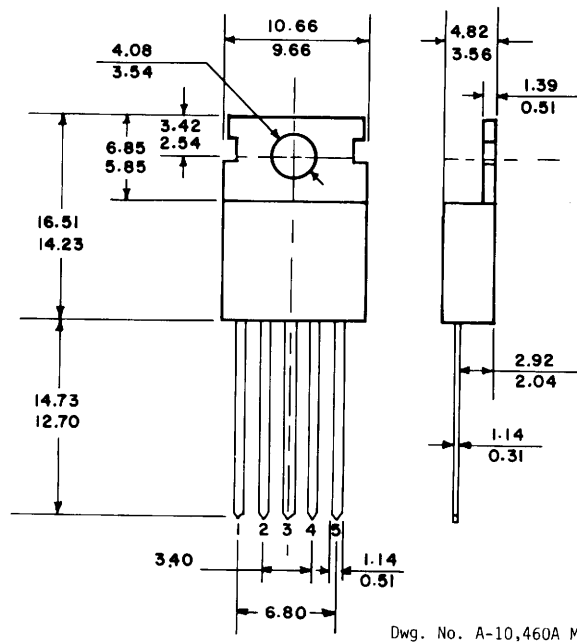


DIMENSIONS IN INCHES



DIMENSIONS IN MILLIMETRES

Based on 1" = 25.4 mm



NOTES:

1. Lead spacing tolerance is non-cumulative.
2. Exact body and lead configuration at vendor's option within limits shown.
3. Lead gauge plane is 0.030" (0.76 mm) max. below seating plane.



a Penn Central unit

SPRAGUE ELECTRIC COMPANY

115 Northeast Cutoff, WORCESTER, MASS. 01606

Tel. 617/853-5000

SALES OFFICES

ALABAMA

EPI Inc.
Suite 64
3322 South Memorial Pkwy.
Huntsville 35801
Tel. 205/883-0520

ARIZONA

Sprague Electric Company
Suite 209
1819 S. Dobson Rd.
Mesa 85202
Tel. 602/244-0154
602/831-6762

CALIFORNIA (Metro. L.A.)

Sprague Electric Company
11222 LaCienega Blvd.
P.O. Box 6012
Inglewood 90306
Tel. 213/649-2600

Sprague Electric Company
3303 Harbor Blvd. — Suite K3
Costa Mesa 92626
Tel. 714/549-9913

(Northern)

William J. Purdy Company
770 Airport Blvd.
Burlingame 94010
Tel. 415/347-7701

(San Diego)

R. David Miner Inc.
4045 Bonita Road — Suite 207
P.O. Box 867
Bonita 92002
Tel. 619/267-3900

COLORADO

William J. Purdy Company
1327 S. Inca St.
Denver 80223
Tel. 303/777-1411

CONNECTICUT

Sprague Electric Company
935 White Plains Rd.
Trumbull 06611
Tel. 203/261-2551

Ray Perron & Co., Inc.
1040 Great Plain Ave.
P.O. Box 389
Needham, MA 02192
Tel. 617/449-6162

DIST. OF COLUMBIA

Sprague Electric Company
(Government Sales Only)
2233 Wisconsin Ave., N.W.
Washington 20007
Tel. 202/337-7820

Sprague Electric Company
P.O. Box 39
Annapolis Junction, MD 20701
Tel. 301/953-1717

Trinkle Sales Inc.
1010 Haddonfield-Berlin Rd.
P.O. Box 5320
Cherry Hill, NJ 08034
Tel. 609/795-4200

FLORIDA

Sprague Electric Company
616 E. Altamonte Drive
P.O. Box 1410
Altamonte Springs 32715
Tel. 305/831-3636

Sprague Electric Company
1470 W. McNab Road — Suite 102
Ft. Lauderdale 33309
Tel. 305/979-1440

GEORGIA

Electronic Marketing Associates
Suite 109
6695 Peachtree Industrial Blvd.
Atlanta 30360
Tel. 404/448-1215

ILLINOIS (Northern)

Sprague Electric Company
1480 Renaissance Dr. — Suite 410
Park Ridge 60068
Tel. 312/296-6620

(Southern)

EPI Inc.
23 North Gore Ave.
St. Louis, MO 63119
Tel. 314/962-1411

INDIANA

Sprague Electric Company
2421 Willowbrook Parkway
P.O. Box 55188
Indianapolis 46205
Tel. 317/253-4247

MARYLAND

Sprague Electric Company
P.O. Box 39
Annapolis Junction 20701
Tel. 301/792-4890

Trinkle Sales Inc.
1010 Haddonfield-Berlin Rd.
P.O. Box 5320
Cherry Hill, NJ 08034
Tel. 609/795-4200

MASSACHUSETTS

Sprague Electric Company
10 Burr St.
Frammingham 01701
Tel. 617/875-3200

Sprague Electric Company
87 Marshall St.
North Adams 01247
Tel. 413/664-4411

Ray Perron & Co., Inc.
1040 Great Plain Ave.
P.O. Box 389
Needham 02192
Tel. 617/449-6162

MICHIGAN

Sprague Electric Company
2922 Wildwood Ave.
Jackson 49202
Tel. 517/787-3934

MINNESOTA

HMR, Inc.
7200 France Avenue South
Minneapolis 55435
Tel. 612/831-7400

MISSISSIPPI

EPI Inc.
Suite 64
3322 South Memorial Pkwy.
Huntsville, AL 35801
Tel. 205/883-0520

MISSOURI

EPI Inc.
23 North Gore Ave.
St. Louis 63119
Tel. 314/962-1411

NEW HAMPSHIRE

Ray Perron & Co., Inc.
1 Elm St.
Dover 03820
Tel. 603/742-2321

NEW JERSEY (Northern)

Sprague Electric Company
1479 Route 23
P.O. Box 1612
Wayne 07470
Tel. 201/696-8200

(Southern)

Trinkle Sales Inc.
1010 Haddonfield-Berlin Rd.
P.O. Box 5320
Cherry Hill 08034
Tel. 609/795-4200

NEW MEXICO

William J. Purdy Company
457-D Washington St. SE
Albuquerque 87108
Tel. 505/266-7959

NEW YORK (Down State)

Sprague Electric Company
2001 Palmer Ave.
Larchmont 10538
Tel. 914/834-4439

William Rutt, Inc.
14 N. Chatsworth Ave.
P.O. Box 1029
Larchmont 10538
Tel. 914/834-8555

(Long Island)

Sprague Electric Company
1727 Veterans Highway
P.O. Box 541
Central Islip 11722
Tel. 516/234-8700

William Rutt, Inc.
14 N. Chatsworth Ave.
P.O. Box 1029
Larchmont 10538
Tel. 914/834-8555

(Up State)

Sprague Electric Company
2002 Teall Ave.
Syracuse 13206
Tel. 315/437-7311

Paston-Hunter Co., Inc.
2002 Teall Ave.
Syracuse 13206
Tel. 315/437-2843

NORTH CAROLINA

Electronic Marketing Associates
9225 Honeycutt Creek Rd.
Raleigh 27609
Tel. 919/847-8800

OHIO (Northern)

Electronic Salesmasters, Inc.
24100 Chagrin Blvd.
Bedchwood 44122
Tel. 1-800-362-2616

(Southern)

Sprague Electric Company
6 West High St. — Suite 405
Springfield 45502
Tel. 513/322-3881

OREGON

William J. Purdy Company
7799 Southwest Cirrus Drive
Beaverton 97005
Tel. 503/641-9373

PENNSYLVANIA

Trinkle Sales Inc.
1010 Haddonfield-Berlin Rd.
P.O. Box 5320
Cherry Hill, NJ 08034
Tel. Phila. 215/922-2080

SOUTH CAROLINA

Electronic Marketing Associates
210 W. Stone Ave.
Greenville 29609
Tel. 803/233-4637

TENNESSEE (Eastern)

Electronic Marketing Associates
9225 Honeycutt Creek Road
Raleigh, NC 27609
Tel. 919/847-8800

(Western)

EPI Inc.
Suite 64
3322 South Memorial Pkwy.
Huntsville, AL 35801
Tel. 205/883-0520

TEXAS

Sprague Electric Company
Suite 220
9319 LBJ Freeway
Dallas 75243
Tel. 214/235-1256

Sprague Electric Company
1106 Clayton Lane — Suite 385E
Austin 78723
Tel. 512/458-2514

UTAH

William J. Purdy Company
1321 South State St
Salt Lake City 84115
Tel. 801/486-8557

VIRGINIA

Sprague Electric Company
1 East Preston St.
Lexington 24450
Tel. 703/463-9161

Sprague Electric Company
P.O. Box 39
Annapolis Junction, MD 20701
Tel. 301/792-4890

Trinkle Sales Inc.
1010 Haddonfield — Berlin Rd.
P.O. Box 5320
Cherry Hill 08034
Tel. 609/795-4200

WASHINGTON

Sprague Electric Company
3826 Woodland Park, North
Seattle 98103
Tel. 206/632-7761

Sprague Electric Company
Suite H
16111 S.E. McGillivray Boulevard
Vancouver, Washington 98664
Tel. 206/892-0361
Tel. Oregon 503/225-0493

William J. Purdy Company
815 West Ewing St.
Seattle 98119
Tel. 206/284-8020

WISCONSIN

D. Dolin Sales
131 West Layton Ave.
Milwaukee 52307
Tel. 414/482-1111

CANADA

Sprague Electric of Canada, Ltd.
49 Beral Road
Toronto, Ont. M6M 4M7
Tel. 416/766-6123

Sprague Electric of Canada, Ltd.
85 Albert St.
Suite 1610
Ottawa, Ont. K1P 6A4
Tel. 613/238-2542

EUROPE

Sprague World Trade Corp.
3 Chemin de Tavernay
1218 Grand Saconex/Geneve
Switzerland
Tel. 98-4021
TLX 845-23469

Sprague Benelux
B.P. 104
B-9600 Ronse
Belgium
Tel. 055-21 53 22
TLX 85707

Sprague Electric (U.K.) Ltd.
Sabrook Rd., Salfords
Surrey, England RH1 5DZ
Tel. 02934-5666
TLX 851-877813

Sprague France S.A.R.L.
3 Rue Camille Desmoulins
9430 Cachan
France
Tel. (1) 547-6600
TLX 250697

Sprague Elektronik GmbH
Postfach 700 848
D-6 Frankfurt/M
West Germany
Tel. 0611 60551
TLX 414008

Sprague Electric Company
Via G. DeCastro 4
20144 Milano
Italy
Tel. 02 498-7891
TLX 332321

Sprague Scandinavia AB
Box 54
S-182 71 Stocksund
Sweden
Tel. (04) 08 8502 20
TLX 854 15239

HONG KONG

Sprague World Trade Corp.
Eastern Branch
G.P.O. Box 4289
Hong Kong
Tel. 3-7440010
TLX 43395

JAPAN

Sprague Japan K.K.
Nishi-Shinjuku KB Bldg.
11-3, Nishi-Shinjuku 6-Chome
Shinjuku-ku, Tokyo 160
Japan
Tel. (03) 348-5221
TLX J23328

KOREA

Technomi Ltd.
Sprague Korea Branch
Saewoo Building, 5th Floor
1-499 Yoido-Don
Young Dug Po-ku, Seoul, Korea
Tel. (2) 783-9784
TLX 78726186

SINGAPORE

Sprague World Trade Corp.
Singapore Office
9th Floor, 450/452 Inchoape House
Alexandra Road
Singapore 0511
Tel. 475-1826
TLX RS 26384

TAIWAN

Sprague Taiwan Branch/
Technomi, Ltd.
8/F, 142, Sec. 4
Chung Hsiao East Road
Taipei, Taiwan, R.O.C.
Tel. 771-9582
TLX 21422

In the construction of the components described, the full intent of the specification will be met. The Sprague Electric Company, however, reserves the right to make, from time to time, such departures from the detail specifications as may be required to permit improvements in the design of its products. Components made under military approvals will be in accordance with the approval requirements.

The information included herein is believed to be accurate and reliable. However, the Sprague Electric Company assumes no responsibility for its use; nor for any infringements of patents or other rights of third parties which may result from its use.