

# UES1301-UES1303

## 3.5A HIGH EFFICIENCY RECTIFIERS

### FEATURES

- Available as "HR" (high reliability) screened per MIL-PRF-19500, JANTX level. Add "HR" suffix to base part number.
- Available as non-RoHS (Sn/Pb plating), standard, and as RoHS by adding "-PBF" suffix.

### MAXIMUM RATINGS

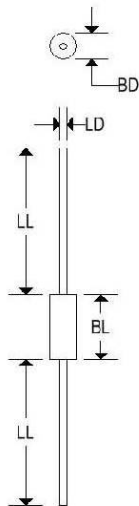
Characteristics	Symbol	UES1301	UES1302	UES1303
Peak inverse voltage	$V_R$	50V	100V	150V
Maximum average DC output at $T_L = 75^\circ\text{C}$ , $L = \%$	$I_O$	6.0A		
Non-repetitive surge current at 8.3ms	$I_{FSM}$	125A		
Thermal resistance at $L = \%$	$R_{\theta JC}$	20°C/W		
Junction operating temperature	$T_J$	175°C		
Operating and storage temperature range	$T_J, T_{stg}$	-55° to +175°C		

### ELECTRICAL CHARACTERISTICS

Part number	Peak inverse voltage	Maximum forward voltage drop		Maximum leakage current		Maximum reverse recovery time
		$T_J = 25^\circ\text{C}$	$T_J = 100^\circ\text{C}$	$T_J = 25^\circ\text{C}$	$T_J = 100^\circ\text{C}$	$I_F = 0.5\text{A}$ $I_R = 1.0\text{A}$ $I_{REC} = 0.25\text{A}$
UES1301	50V	0.925V @ 6A	0.850V @ 6A	5 $\mu\text{A}$	150 $\mu\text{A}$	30ns
UES1302	100V					
UES1303	150V					

### MECHANICAL CHARACTERISTICS

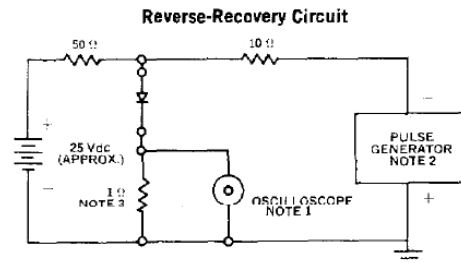
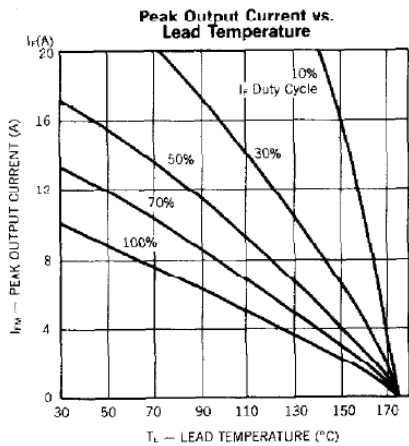
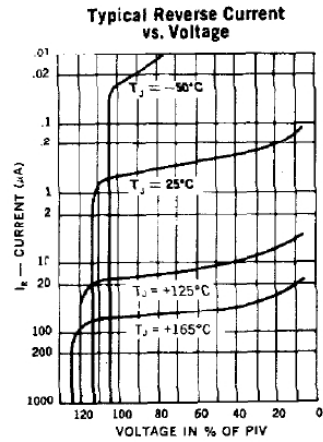
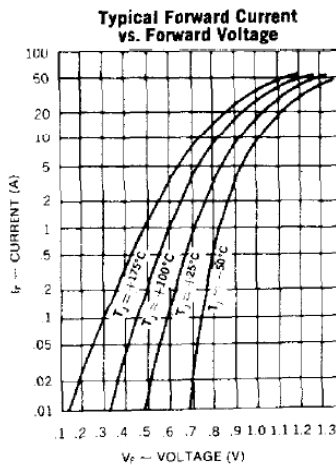
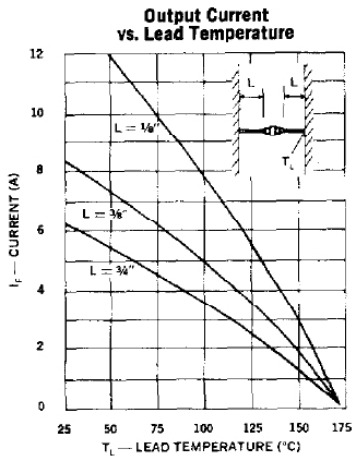
Case:	Digi B
Marking:	Alpha-Numeric
Polarity:	Cathode Band



	DIGI B			
	Inches		Millimeters	
	Min	Max	Min	Max
BD	-	0.145	-	3.680
BL	-	0.300	-	7.620
LD	0.037	0.043	0.940	1.092
LL	0.975	-	24.800	-

# UES1301-UES1303

## 3.5A HIGH EFFICIENCY RECTIFIERS



- NOTES:**
- Oscilloscope: Rise time  $\leq 3$ nS; input impedance = 50 $\Omega$ .
  - Pulse Generator: Rise time  $\leq 8$ nS; source impedance 10 $\Omega$ .
  - Current viewing resistor, non-inductive, coaxial recommended.

