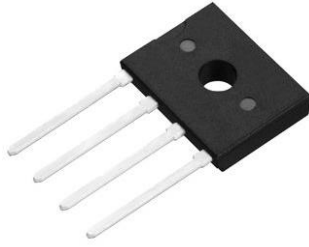




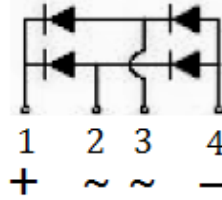
UG4KBXX Series



Glass Passivated Bridge Rectifier



D3K



Features
<ul style="list-style-type: none"> • Glass passivated die construction • Low forward voltage drop • High current capability • High surge current capability • Designed for surface mount application • Plastic material-UL flammability 94V-0

Mechanical Data
<ul style="list-style-type: none"> • Case: D3K, molded plastic • Terminals: plated leads solderable per MIL-STD-202, Method 208 • Polarity: as marked on case • Mounting position: Any • Marking: type number • Lead Free: For RoHS / Lead Free Version,

Ordering Information		
Part No.	Package	Packing
UG4KBXX Series	D3K	700/Box

Maximum Ratings and Electrical Characteristics (TA=25°C unless otherwise noted)									
Parameter	Symbol	UG4K B05	UG4K B10	UG4K B20	UG4K B40	UG4K B60	UG4K B80	UG4K B100	Units
Peak Repetitive Reverse Voltage	V_{RRM}	50	100	200	400	600	800	1000	V
Voltage Working Peak Reverse	V_{RWM}								
Voltage DC Blocking Voltage	V_{DC}								
RMS Reverse Voltage	V_{RMS}	35	70	140	280	420	560	700	V
Average Rectified Output Current	I_O	2.0 4.0							A
Without heat sink @ $T_A=30^\circ\text{C}$ With heat sink @ $T_A=140^\circ\text{C}$									
Non-Repetitive Peak Forward Surge Current 8.3ms Single half sine-wave superimposed on rated load (JEDEC Method)	I_{FSM}	120							A
Forward Voltage per element @ $I_F=4\text{A}$	V_{FM}	1.1							V
Maximum DC reverse current rated DC blocking voltage per leg @ $T_A=25^\circ\text{C}$ @ $T_A=125^\circ\text{C}$	I_R	5.0 500							μA
Typical Junction Capacitance per leg	C_J	21							pF
Typical Thermal Resistance per leg (Note 1)	$R_{\theta JA}$	55							$^\circ\text{C/W}$
	$R_{\theta JL}$	15							
Operating and Storage Temperature Range	T_J, T_{STG}	-55~+150							$^\circ\text{C}$
Marking		UG4K B05	UG4K B10	UG4K B20	UG4K B40	UG4K B60	UG4K B80	UG4K B100	

Note:
1. Measured at 1.0 MHz and applied reverse voltage of 4.0VDC.



Rating and Characteristics Curvers

Fig. 1 Output Current Derating Curve

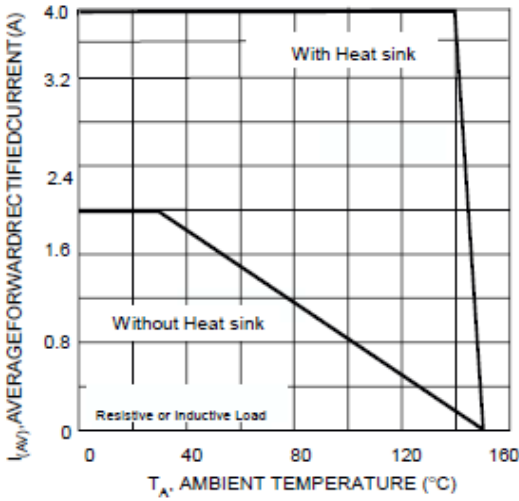


Fig. 2 Typical I Forward Characteristics (per leg)

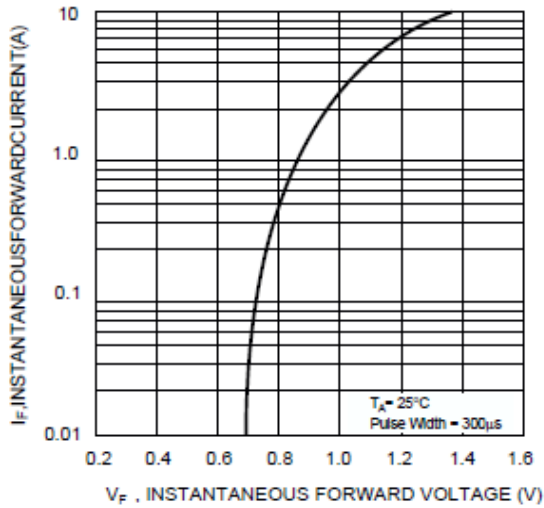


Fig. 3 Maximum Peak Forward Surge Current (per leg)

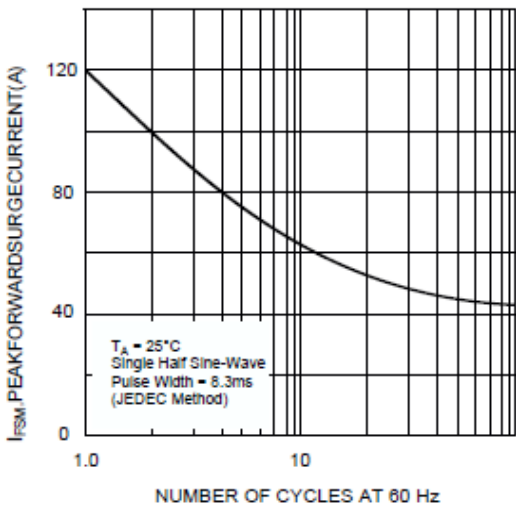


Fig.4 Typical Junction Capacitance Per Diode

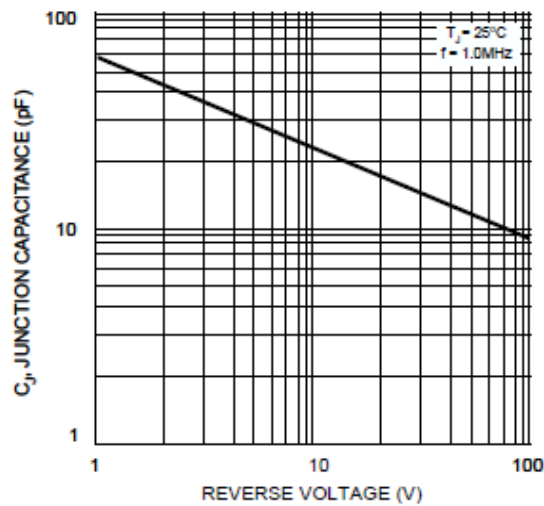
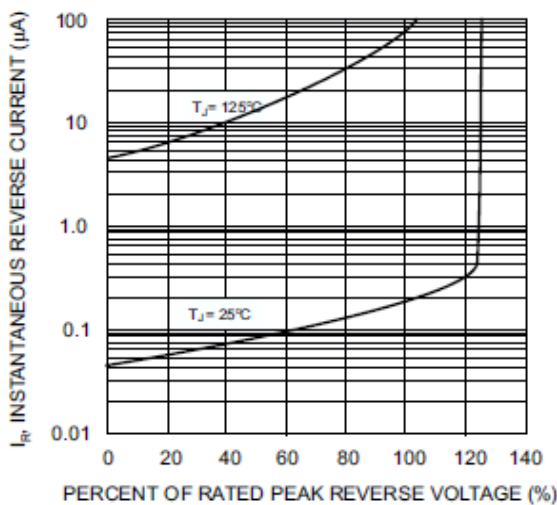
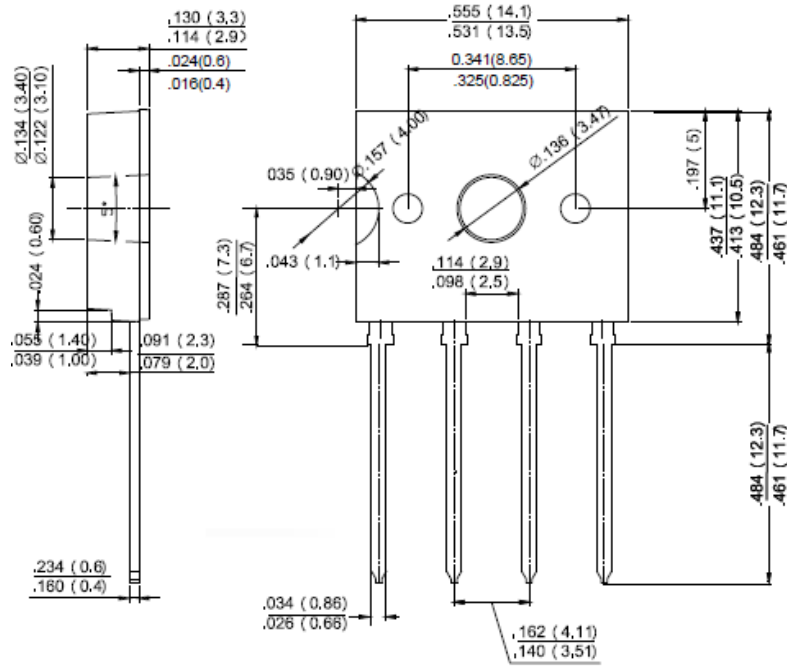


Fig. 5 T typical Reverse Characteristics (per element)





Package Outline Dimensions



D3K

Dimensions in inches and (millimeters)