



UHC188

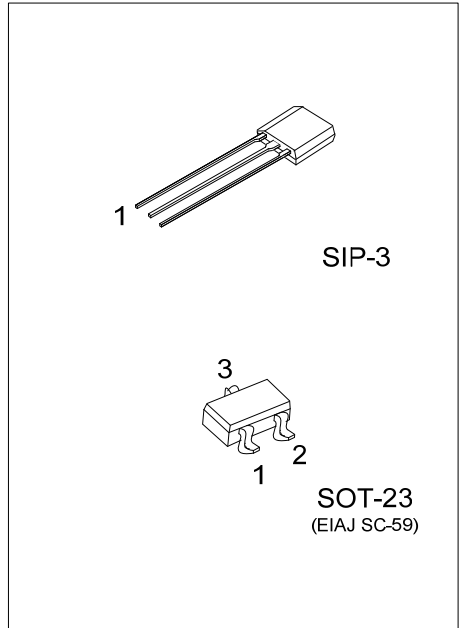
CMOS IC

SINGLE OUTPUT HALL EFFECT LATCH

DESCRIPTION

UTC **UHC188** is an integrated Hall effect latched sensor designed for electronic commutation of brush-less DC motor applications. The device using HVCMOS process includes an on-chip Hall voltage generator for magnetic sensing, a comparator that amplifies the Hall voltage, and a Schmitt trigger to provide switching hysteresis for noise rejection, and open-collector output. An internal band-gap regulator is used to provide temperature compensated supply voltage for internal circuits and allows a wide operating supply range.

If a magnetic flux density larger than threshold B_{op} , OUT is turned on (low). The output state is held until a magnetic flux density reversal falls below B_{rp} causing OUT to be turned off (high).



FEATURES

- * 2.8V~30V DC operation voltage
- * Temperature compensation
- * Wide operating voltage range
- * Open-Drain pre-driver
- * 25mA maximum sinking output current.

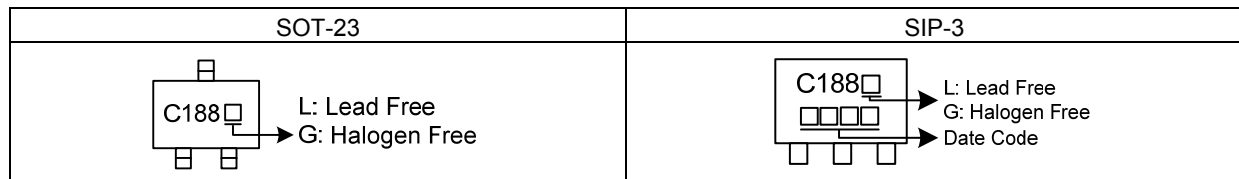
ORDERING INFORMATION

Ordering Number		Package	Pin Assignment			Packing
Lead Free	Halogen Free		1	2	3	
UHC188L-AE3-R	UHC188G-AE3-R	SOT-23	I	O	G	Tape Reel
UHC188L-G03-B	UHC188G-G03-B	SIP-3	I	G	O	Tape Box
UHC188L-G03-K	UHC188G-G03-K	SIP-3	I	G	O	Bulk

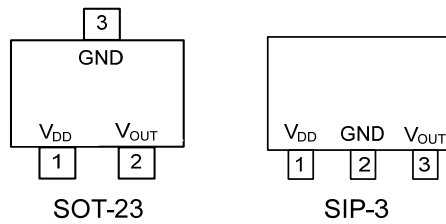
Note: Pin Assignment: I: V_{DD} G: GND O: Output

<p>UHC188G-AE3-R</p> <p>(1) Packing Type</p> <p>(2) Package Type</p> <p>(3) Green Package</p>	<p>(1) R: Tape Reel, B: Tape Box, K: Bulk</p> <p>(2) AE3: SOT-23, G03: SIP-3</p> <p>(3) G: Halogen Free and Lead Free, L: Lead Free</p>
---	---

■ MARKING



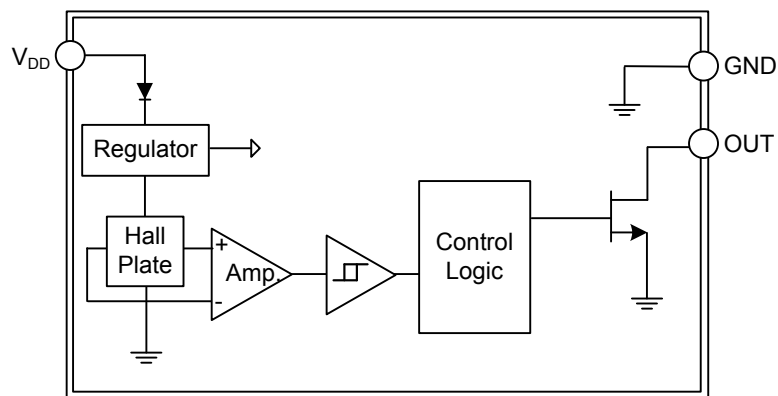
■ PIN CONFIGURATION



■ PIN DESCRIPTION

PIN NAME	DESCRIPTION
V _{DD}	Supply voltage
GND	Ground
Output	Output voltage

■ BLOCK DIAGRAM



■ ABSOLUTE MAXIMUM RATING ($T_A=25^{\circ}\text{C}$, unless otherwise specified)

PARAMETER		SYMBOL	RATINGS	UNIT
Supply Voltage		V_{CC}	32	V
Reverse V_{CC} Polarity Voltage		V_{RCC}	-32	V
Magnetic Flux Density		B	Unlimited	Gauss
Output Current	Continuous	I_o	25	mA
Power Dissipation	SOT-23	P_D	200	mW
	SIP-3		400	mW
Ambient Temperature		T_A	-40 ~ +125	$^{\circ}\text{C}$
Storage Temperature Range		T_{STG}	-65 ~ +150	$^{\circ}\text{C}$

Note: Absolute maximum ratings are those values beyond which the device could be permanently damaged. Absolute maximum ratings are stress ratings only and functional device operation is not implied.

■ ELECTRICAL CHARACTERISTICS ($V_{DD}=12\text{V}$, $T_A=25^{\circ}\text{C}$, unless otherwise specified)

PARAMETER	SYMBOL	TEST CONDITIONS	MIN	TYP	MAX	UNIT
Supply Voltage	V_{DD}	Operating	2.8		30	V
Supply Current	I_{DD}	Operating		3.0	4.5	mA
Output Leakage Current	I_{OFF}	$V_{OUT} = 12\text{V}$		< 0.1	10	μA
Output Saturation Voltage	$V_{DS(SAT)}$	$I_{OUT}=20\text{mA}$		0.3		V

■ MAGNETIC CHARACTERISTICS ($V_{DD}=12\text{V}$, $T_A=25^{\circ}\text{C}$, unless otherwise specified)

For UHC188-A

PARAMETER	SYMBOL	TEST CONDITIONS	MIN	TYP	MAX	UNIT
Operate Point, BOP	B_{OP}	$B > B_{OP}$, V_{OUT} On	5	20	40	Gauss
Release Point, BRP	B_{RP}	$B < B_{RP}$, V_{OUT} Off	-40	-20	-5	Gauss
Hysteresis	B_{HY}	$ B_{OP} - B_{RP} $		40		Gauss

For UHC188-B

PARAMETER	SYMBOL	TEST CONDITIONS	MIN	TYP	MAX	UNIT
Operate Point, BOP	B_{OP}	$B > B_{OP}$, V_{OUT} On	5	35	60	Gauss
Release Point, BRP	B_{RP}	$B < B_{RP}$, V_{OUT} Off	-60	-35	-5	Gauss
Hysteresis	B_{HY}	$ B_{OP} - B_{RP} $		70		Gauss

Note: 1mT=10 Gauss.

■ DRIVER OUTPUT VS. MAGNETIC POLE

For SIP3

PARAMETER	TEST CONDITIONS	DO
North Pole	$B < B_{rp}$	High
South Pole	$B > B_{op}$	Low

Note: The magnetic pole is applied facing the branded side of the SIP-3 package.

For SOT-23

PARAMETER	TEST CONDITIONS	DO
North Pole	$B > B_{op}$	Low
South Pole	$B < B_{rp}$	High

Note: The magnetic pole is applied facing the branded side of the SOT-23 package.

■ CHYSTERESIS CHARACTERISTICS

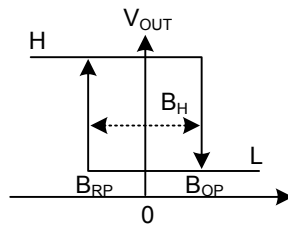
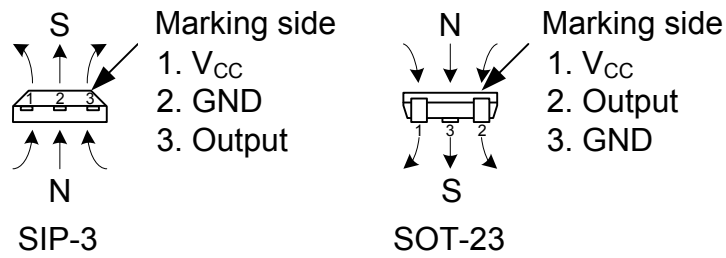
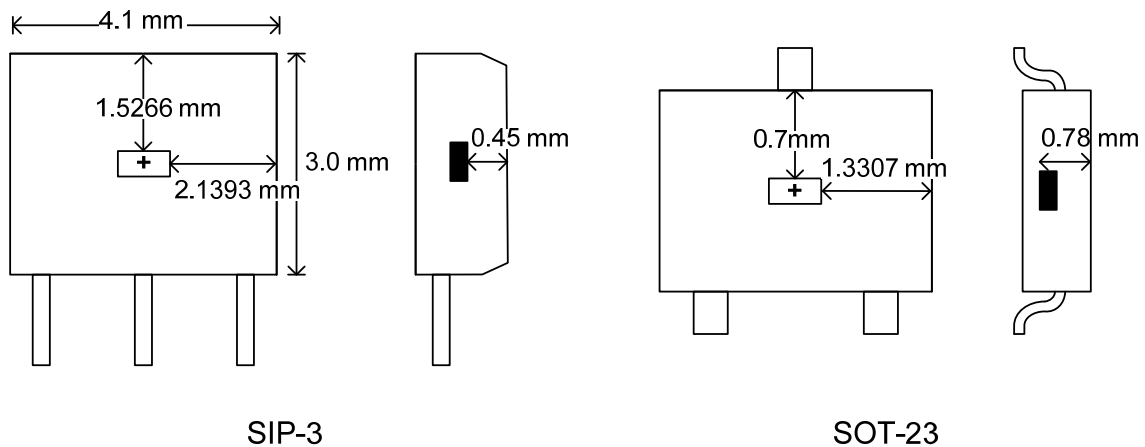
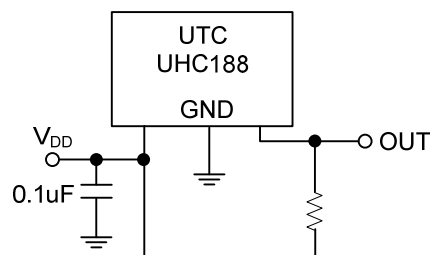


Figure 1. Applying Direction of Magnetic Flux

■ TEST CIRCUIT



■ TYPICAL APPLICATION CIRCUIT



UTC assumes no responsibility for equipment failures that result from using products at values that exceed, even momentarily, rated values (such as maximum ratings, operating condition ranges, or other parameters) listed in products specifications of any and all UTC products described or contained herein. UTC products are not designed for use in life support appliances, devices or systems where malfunction of these products can be reasonably expected to result in personal injury. Reproduction in whole or in part is prohibited without the prior written consent of the copyright owner. UTC reserves the right to make changes to information published in this document, including without limitation specifications and product descriptions, at any time and without notice. This document supersedes and replaces all information supplied prior to the publication hereof.