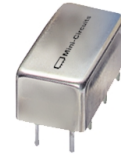


Plug-In, Low Noise Active Mixer

Level -4 (LO Power -4 dBm) 10 to 500 MHz

UNCL-L1+ UNCL-L1



CASE STYLE: A01
PRICE: \$28.20 ea. QTY (1-9)

+ RoHS compliant in accordance
with EU Directive (2002/95/EC)

The +Suffix identifies RoHS Compliance. See our web site
for RoHS Compliance methodologies and qualifications.

Maximum Ratings

Operating Temperature	-55°C to 100°C
Storage Temperature	-55°C to 100°C
RF Power	50mW
IF Current	40mA

Pin Connections

LO	1
RF	7
IF	8
DC	4
GROUND	3,5,6
CASE GROUND	3,5,6
NOT USED	2

Features

- excellent conversion loss, 5.73 dB typ.
- good L-R isolation, 35 dB typ., L-I isolation, 23 dB typ.
- rugged welded construction
- hermetically sealed
- protected by U.S Patent 6,943,629

Applications

- VHF/UHF
- transmitters

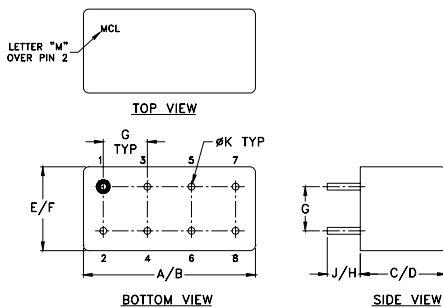
Electrical Specifications

FREQUENCY (MHz)	CONVERSION GAIN (dB)	LO-RF ISOLATION (dB)						LO-IF ISOLATION (dB)						INPUT POWER (dBm) 1 dB Compr.	DC POWER					
		Mid-Band m		Total Range Max.		L	M	U	L	M	U	Typ.	Current Volt (mA)							
10-500	DC-500	5.73	0.8	8.0	8.5	45	30	35	20	25	17	32	20	23	15	18	12	1	12	35

Up to 1 dBm typ.

L = low range [f_L to $10 f_L$] M = mid range [$10 f_L$ to $f_U/2$] U = upper range [$f_U/2$ to f_U]
m = mid band [$2f_L$ to $f_U/2$]

Outline Drawing



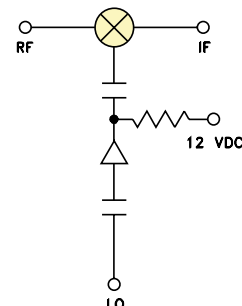
Outline Dimensions (inch/mm)

A	B	C	D	E	F	
.770	.800	.385	.400	.370	.400	
19.56	20.32	9.78	10.16	9.40	10.16	
G	H	J	K			wt
.200	.20	.14	.031			grams
5.08	5.08	3.56	0.79			5.2

Typical Performance Data

Frequency (MHz)		Conversion Loss (dB)	Isolation L-R (dB)	Isolation L-I (dB)	VSWR RF Port (:1)	VSWR LO Port (:1)
RF	LO	LO -4dBm	LO -4dBm	LO -4dBm	LO -4dBm	LO -4dBm
10.00	40.00	5.70	62.39	50.19	1.11	1.43
20.00	50.00	5.67	57.15	44.63	1.07	1.34
50.00	80.00	5.70	49.25	36.60	1.06	1.39
53.24	83.24	5.70	48.94	36.12	1.06	1.39
96.47	66.47	5.69	44.45	31.86	1.05	1.49
100.00	70.00	5.69	44.16	31.79	1.06	1.50
139.71	109.71	5.68	42.08	29.24	1.07	1.62
182.94	152.94	5.68	39.66	26.97	1.09	1.81
200.00	170.00	5.70	38.64	26.20	1.10	1.87
226.18	196.18	5.69	37.39	25.18	1.11	1.97
240.59	210.59	5.70	37.10	24.79	1.13	2.03
250.00	220.00	5.70	36.64	24.38	1.13	2.06
269.41	239.41	5.69	35.64	23.95	1.14	2.15
312.65	282.65	5.71	34.48	23.15	1.17	2.26
355.88	325.88	5.70	33.01	22.80	1.21	2.36
399.12	369.12	5.74	32.87	23.17	1.25	2.43
442.35	412.35	5.72	32.64	23.55	1.30	2.46
471.18	441.18	5.77	30.96	25.05	1.34	2.48
485.59	455.59	5.77	30.40	25.57	1.36	2.48
500.00	470.00	5.77	29.18	26.74	1.38	2.48

Electrical Schematic



Performance Charts

