

6427525 N E C ELECTRONICS INC

05E 22778 D

BIPOLAR ANALOG INTEGRATED CIRCUITS

 μ PC1241H, μ PC1242H

T-74-05-01

7 W AF POWER AMPLIFIER

DESCRIPTION

The μ PC1241H and μ PC1242H are audio power amplifiers which is especially designed for car radio and car stereo.

The devices are encapsulated in newly developed small packages featuring low thermal resistance, providing easy design for 2 Ω load circuit.

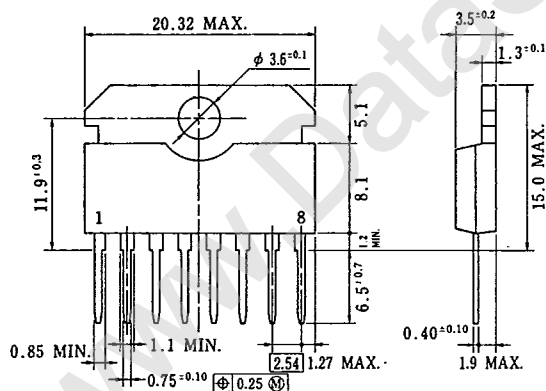
At 14.4 V the devices give output power of 7 W at $R_L = 4 \Omega$ and 11 W at $R_L = 2 \Omega$

FEATURES

- **High output power :** $P_O = 7 \text{ W TYP.}$ @ $R_L = 4 \Omega$, T.H.D. = 10 %, $V_{CC} = 14.4 \text{ V}$
 $P_O = 11 \text{ W TYP.}$ @ $R_L = 2 \Omega$, T.H.D. = 10 %, $V_{CC} = 14.4 \text{ V}$
- **Low distortion :** T.H.D. = 0.1 % TYP. @ $R_L = 4 \Omega$, $P_O = 0.5 \text{ W}$
- **High reliability :** of the chip and package with additional complete safety during operation thanks to protection against;
 - (1) Load dump voltage surge.
 - (2) Over rating chip temperature (150 °C).
 - (3) Output DC and AC short circuit to ground or V_{CC} .
 - (4) Revere insertion.

These ICs are not destroyed nor damaged even when any of neighboring two terminals are shorted to each other.
- **Space and cost saving :** very low number of external components, very simple mounting system with no electrical isolation between the package and the heat sink (one screw only).
- Pin orders of these types are symmetrical each other, which reduces the area of Printed Circuit Board effectively.

PACKAGE DIMENSIONS (Unit : mm)



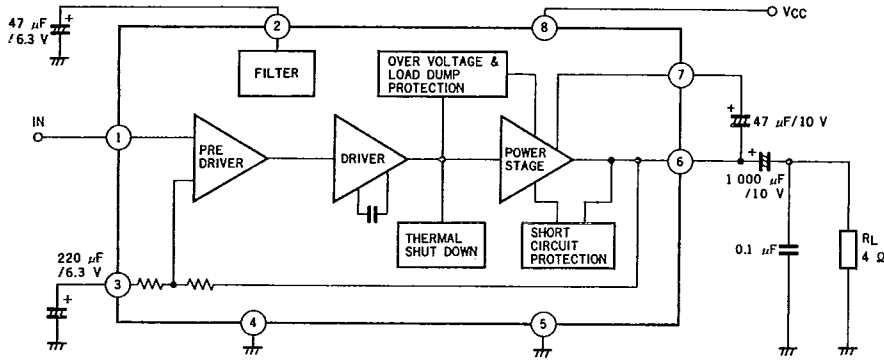
P8HP-254B

6427525 N E C ELECTRONICS INC

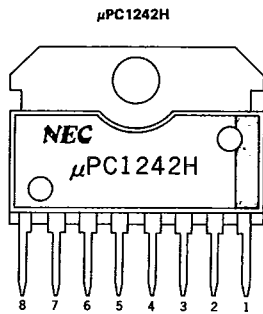
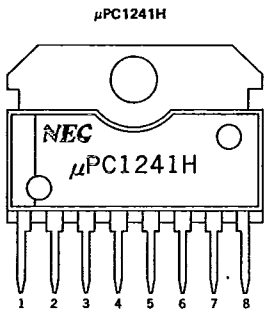
μ PC1241H, μ PC1242H
05E 22779 D

T-74-05-01

BLOCK DIAGRAM



CONNECTION DIAGRAM



Pin No.	μ PC1241H μ PC1242H
1	Input
2	Bypass
3	Feedback
4	GND (for Input)
5	GND (for Output)
6	Output
7	Bootstrap
8	Power supply

5

μPC1241H, μPC1242H

6427525 N E C ELECTRONICS INC

05E 22780 D

T-74-05-01

ABSOLUTE MAXIMUM RATINGS (T_a=25 °C)

Supply Voltage (Surge PW=200 ms)	V _{CC surge}	50	V
Supply Voltage (Operational)	V _{CC2}	18*	V
Circuit Current (Peak)	I _{CC peak}	4.5	A
Package Dissipation	P _D	12	W
Operating Temperature	T _{opt}	-30 to +75*	°C
Storage Temperature	T _{stg}	-55 to +150	°C

*Using an aluminum heat sink 100 X 100 X 1 mm

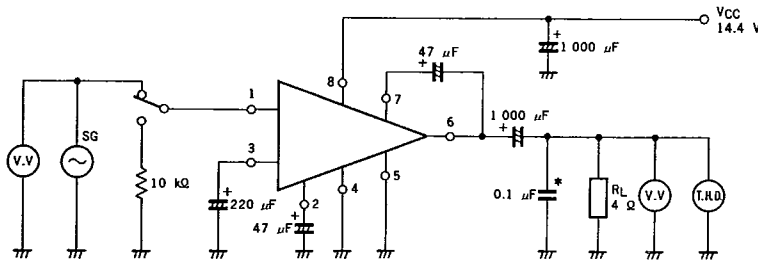
RECOMMENDED CONDITIONS (T_a=25 °C)

Supply Voltage Range	9.5 to 16	V
Load Impedance	2 to 16	Ω

ELECTRICAL CHARACTERISTICS (T_a=25 °C, f = 1 kHz, R_L=4 Ω)

CHARACTERISTIC	SYMBOL	MIN.	TYP.	MAX.	UNIT	TEST CONDITION
Over Voltage Protection	V _{CC(MAX.)}	18	19		V	
Circuit Current	I _{CC}	25	45	80	mA	V _{in} = 0, V _{CC} = 13.2 V
Output Power	P _O	5.0	5.8		W	R _L = 4 Ω, T.H.D. = 10 %, V _{CC} = 13.2 V
			7		W	R _L = 4 Ω, T.H.D. = 10 %, V _{CC} = 14.4 V
			9.2		W	R _L = 2 Ω, T.H.D. = 10 %, V _{CC} = 13.2 V
			11		W	R _L = 2 Ω, T.H.D. = 10 %, V _{CC} = 14.4 V
Total Harmonic Distortion	T.H.D.		0.1	1	%	R _L = 4 Ω, P _O = 0.5 W, V _{CC} = 13.2 V
			0.4		%	R _L = 2 Ω, P _O = 1 W, V _{CC} = 13.2 V
Voltage Gain	A _V	49	51.5	54	dB	P _O = 0.5 W
Output Noise Level	V _n		1.4	4.0	mV	R _G = 10 kΩ

TEST CIRCUIT



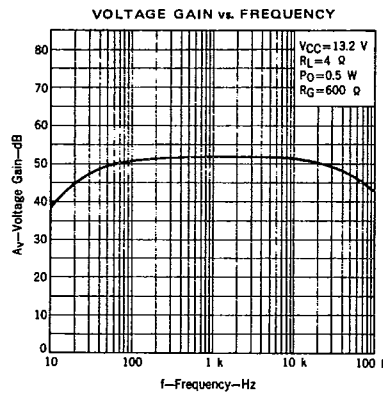
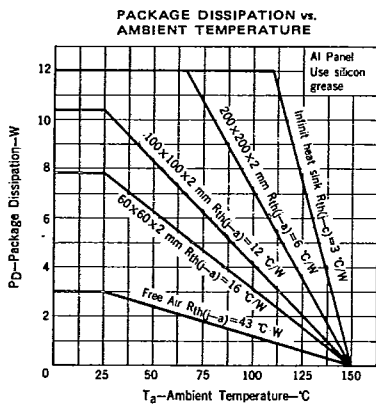
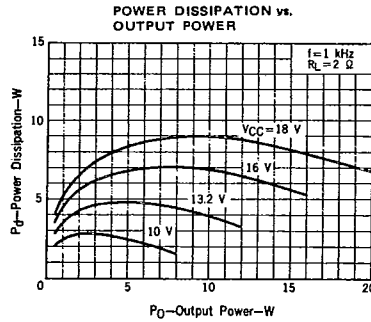
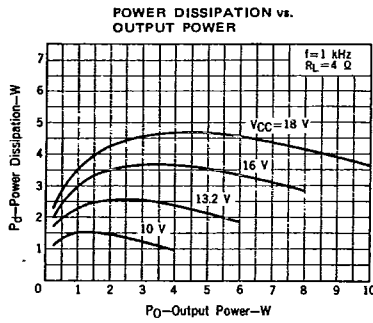
* Mylar Film Capacitor

μ PC1241H, μ PC1242H
05E 22781 D

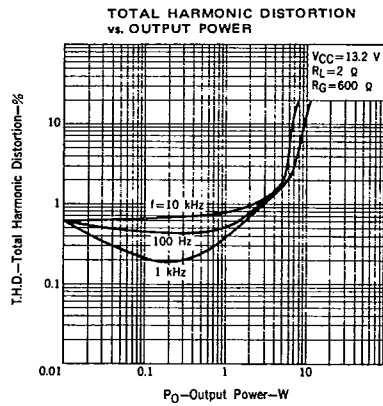
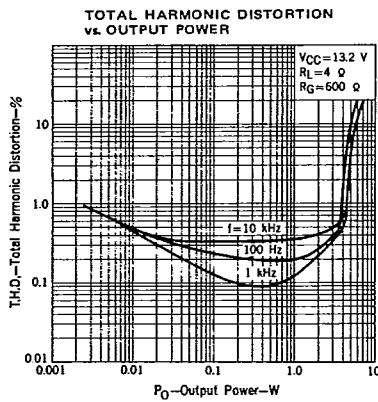
T-74-05-01

6427525 N E C ELECTRONICS INC

TYPICAL CHARACTERISTICS ($T_s = 25^\circ\text{C}$)

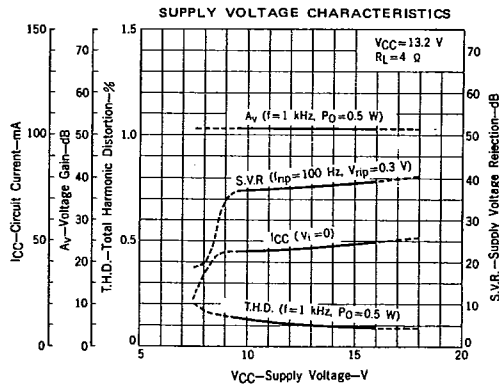
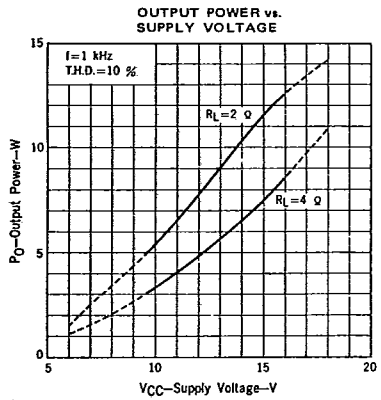
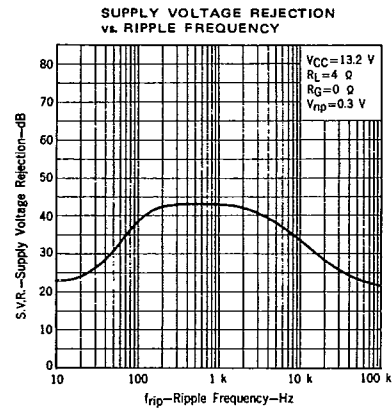
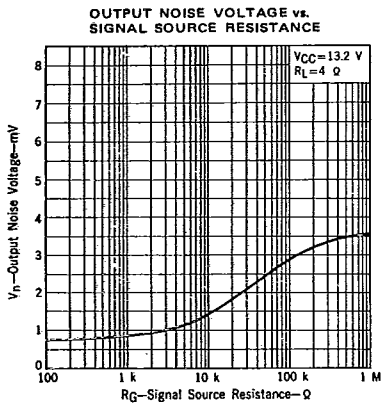
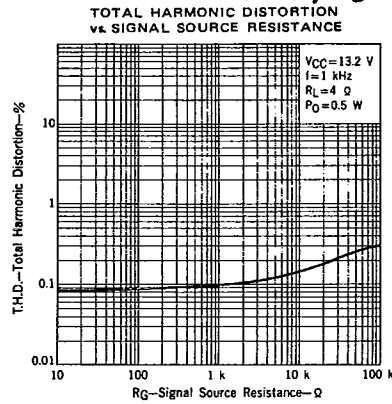
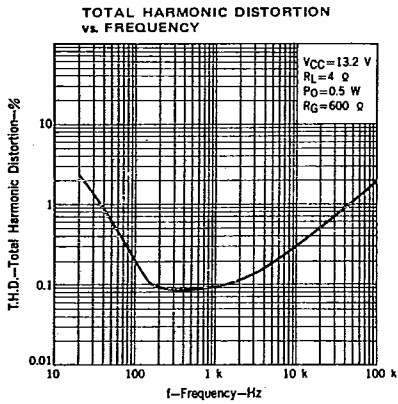


5



μ PC1241H, μ PC1242H
6427525 N E C ELECTRONICS INC

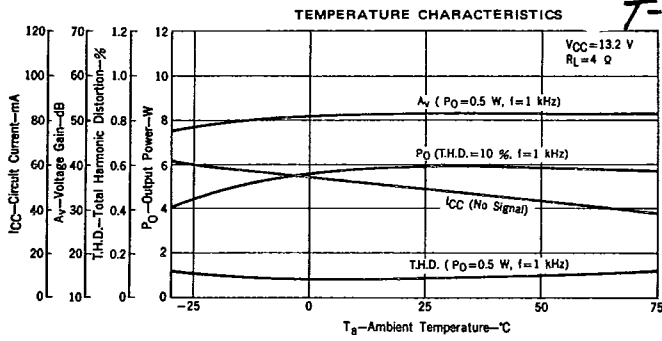
05E 22782 D
T-74-05-01



6427525 N E C ELECTRONICS INC

μ PC1241H, μ PC1242H
05E 22783 D

T-74-05-01



TYPICAL APPLICATIONS

(1) Circuit Example 1

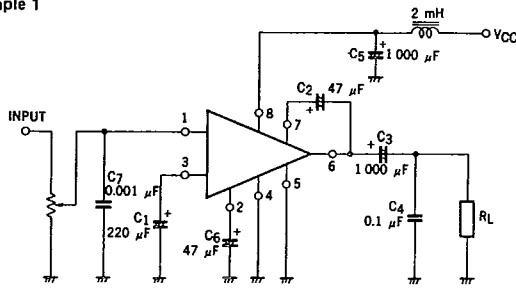


Fig. A

(2) Circuit Example 2

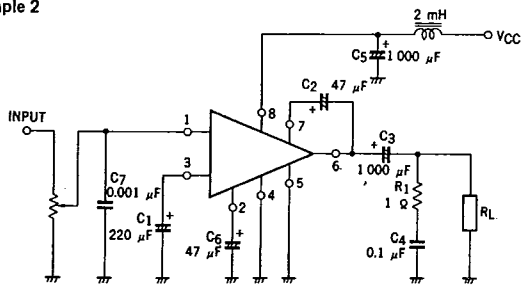


Fig. B

- The capacitor C_4 is for preventing a parasitic oscillation. A mylar film capacitor is recommended. If an oscillation occur, increase capacitance of C_4 , or connect an additional resistor R_1 as shown in Fig. B.

5

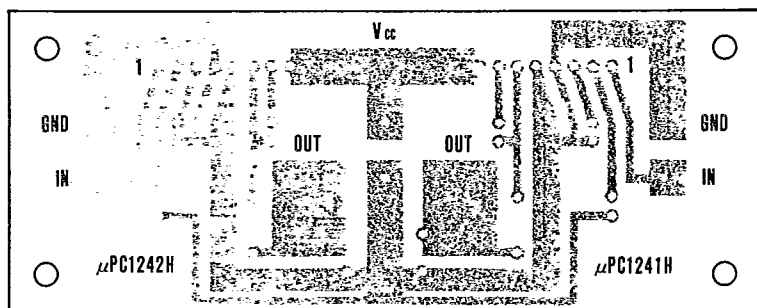
μ PC1241H, μ PC1242H

6427525 N E C ELECTRONICS INC

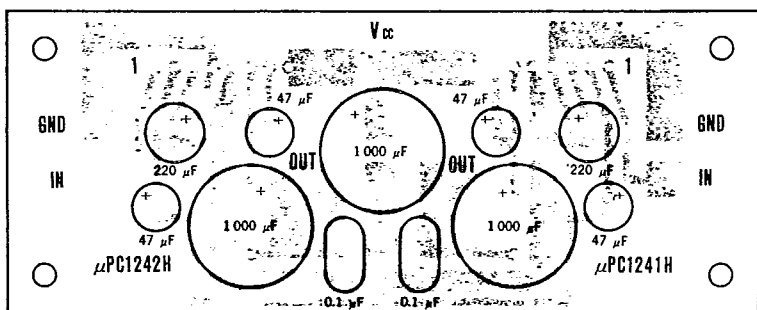
05E 22784 D

TYPICAL PRINTED CIRCUIT BOARD PATTERN (Copper side)

T-74-05-01



COMPONENTS LAYOUT FOR P.C. ASSEMBLY (Copper side)



INSTRUCTION FOR USE

- How to attach to the heat sink.
 - Surely use the silicon grease.
 - Keep fastening torque for the screw in the range of 5 to 8 kg-m.
- Use TAB as floating or connect to output GND (pin #5).
Do not use TAB for power supply GND.
- When this IC is unstable due to the high impedance of signal source, connect the capacitance C_7 (around 0.001 μ F) between input (pin #1) and input GND (pin #4).