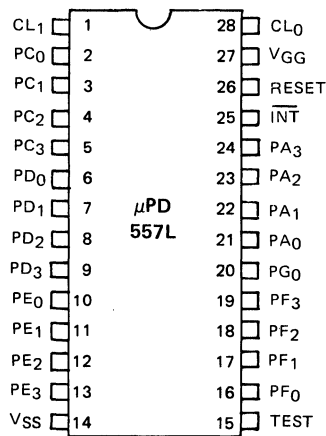


4-BIT SINGLE CHIP MICROCOMPUTER

DESCRIPTION The μPD557L is a μCOM-43 4-bit single chip microcomputer with high voltage outputs, and low power consumption. The outputs can be pulled to -35V for direct interfacing to vacuum fluorescent displays. The μPD557L is manufactured with a low-power-consumption PMOS process, allowing use of a -8V, low current power supply. The μPD557L provides all of the hardware features of the μCOM-43 family, except that it has 21 I/O lines in a 28-pin dual-in-line package to reduce device cost. The μPD557L executes all 80 instructions of the μCOM-43 instruction set.

PIN CONFIGURATION



PIN NAMES

PA ₀ -PA ₃	Input Port A
PC ₀ -PC ₃	Input/Output Port C
PD ₀ -PD ₃	Input/Output Port D
PE ₀ -PE ₃	Output Port E
PF ₀ -PF ₃	Output Port F
PG ₀	Output Port G
$\overline{\text{INT}}$	Interrupt Input
CL ₀ -CL ₁	External Clock Signals
RESET	Reset
VGG	Power Supply Negative
VSS	Power Supply Positive
TEST	Factory Test Pin (Connect to VSS)

ABSOLUTE MAXIMUM RATINGS*

Operating Temperature -10°C to +70°C
 Storage Temperature -40°C to +125°C
 Supply Voltage -15 to +0.3 Volts
 Input Voltages (Port A, $\overline{\text{INT}}$, RESET) -15 to +0.3 Volts
 (Ports C, D) -40 to +0.3 Volts
 Output Voltages -40 to +0.3 Volts
 Output Current (Ports C, D, each bit) -4 mA
 (Ports E, F, G, each bit) -25 mA
 (Total, all ports) -100 mA

COMMENT: Stress above those listed under "Absolute Maximum Ratings" may cause permanent damage to the device. This is a stress rating only and functional operation of the device at these or any other conditions above those indicated in the operational sections of this specification is not implied. Exposure to absolute maximum rating conditions for extended periods may affect device reliability.

*T_a = 25°C

μPD557L

$T_a = -10^\circ\text{C}$ to $+70^\circ\text{C}$; $V_{GG} = -8.0\text{V} \pm 10\%$

DC CHARACTERISTICS

PARAMETER	SYMBOL	LIMITS			UNIT	TEST CONDITIONS
		MIN	TYP	MAX		
Input Voltage High	V_{IH}	0		-2.5	V	Ports A, C, D, $\overline{\text{INT}}$, RESET
Input Voltage Low	V_{IL1}	-6.5		V_{GG}	V	Ports A, $\overline{\text{INT}}$, RESET
	V_{IL2}	-6.5		-35	V	Ports C, D
Clock Voltage High	$V_{\phi H}$	0		-0.6	V	CL0 Input, External Clock
Clock Voltage Low	$V_{\phi L}$	-5.0		V_{GG}	V	CL0 Input, External Clock
Input Leakage Current High	I_{LIH}			+10	μA	Ports A, C, D, $\overline{\text{INT}}$, RESET $V_I = -1\text{V}$
Input Leakage Current Low	I_{LIL1}			-10	μA	Ports A, C, D, $\overline{\text{INT}}$, RESET $V_I = -9\text{V}$
	I_{LIL2}			-30	μA	Ports C, D, $V_I = -35\text{V}$
Clock Input Leakage Current High	$I_{L\phi H}$			+200	μA	CL0 Input, $V_{\phi H} = 0\text{V}$
Clock Input Leakage Current Low	$I_{L\phi L}$			-200	μA	CL0 Input, $V_{\phi L} = -9\text{V}$
Output Voltage High	V_{OH1}			-1.0	V	Ports C through G, $I_{OH} = -2\text{ mA}$
	V_{OH2}			-4.0	V	Ports E, F, G, $I_{OH} = -20\text{ mA}$
Output Leakage Current Low	I_{LOL1}			-10	μA	Ports C through G, $V_O = -9\text{V}$
	I_{LOL2}			-30	μA	Ports C through G, $V_O = -35\text{V}$
Supply Current	I_{GG}		-20	-36	mA	

$T_a = 25^\circ\text{C}$

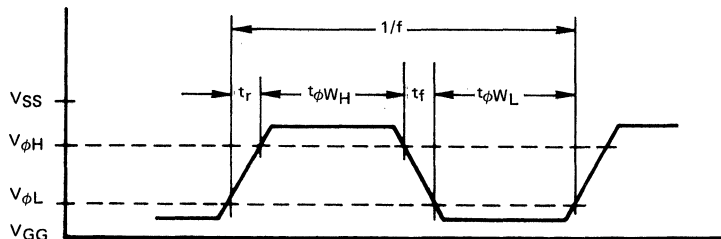
CAPACITANCE

PARAMETER	SYMBOL	LIMITS			UNIT	TEST CONDITIONS
		MIN	TYP	MAX		
Input Capacitance	C_I			15	pF	f = 1 MHz
Output Capacitance	C_O			15	pF	
Input/Output Capacitance	C_{IO}			15	pF	

$T_a = -10^\circ\text{C}$ to $+70^\circ\text{C}$; $V_{GG} = -8.0\text{V} \pm 10\%$

AC CHARACTERISTICS

PARAMETER	SYMBOL	LIMITS			UNIT	TEST CONDITIONS
		MIN	TYP	MAX		
Oscillator Frequency	f	100		180	kHz	
Rise and Fall Times	t_r, t_f	0		0.3	μs	External Clock
Clock Pulse Width High	$t_{\phi W_H}$	2.0		8.0	μs	
Clock Pulse Width Low	$t_{\phi W_L}$	2.0		8.0	μs	



CLOCK WAVEFORM