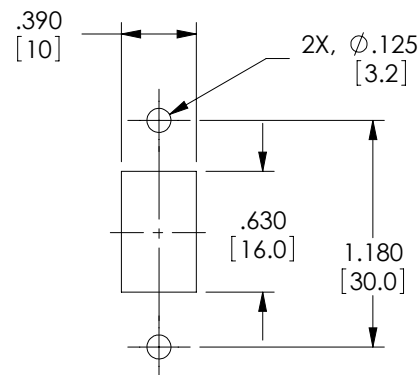
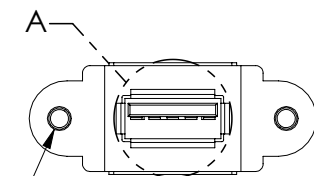


THE INFORMATION CONTAINED IN THIS DRAWING IS THE SOLE PROPERTY OF L-COM, INC. ANY REPRODUCTIONS IN PART OR WHOLE WITHOUT THE WRITTEN PERMISSION OF L-COM, INC. IS PROHIBITED.

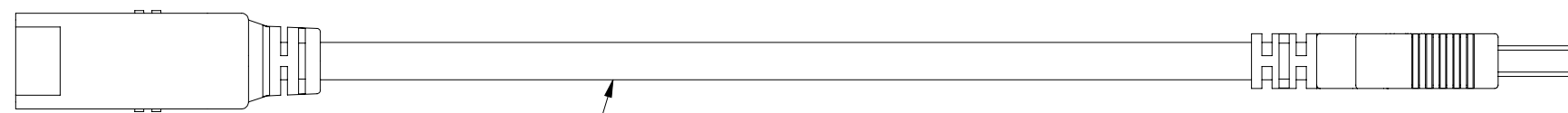
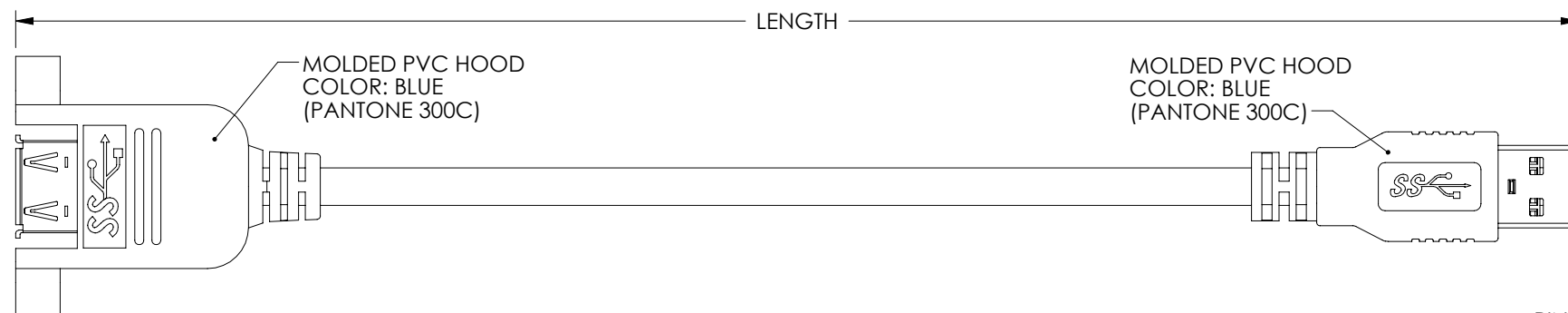
REVISIONS			
REV	DESCRIPTION	DATE	CHANGED BY
A	INITIAL RELEASE	2/8/12	D.GRIFFIN
B	ECN5976: CORRECTED JACK ORIENTATION	02/15/12	DFP



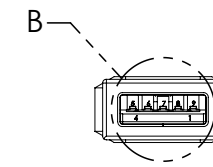
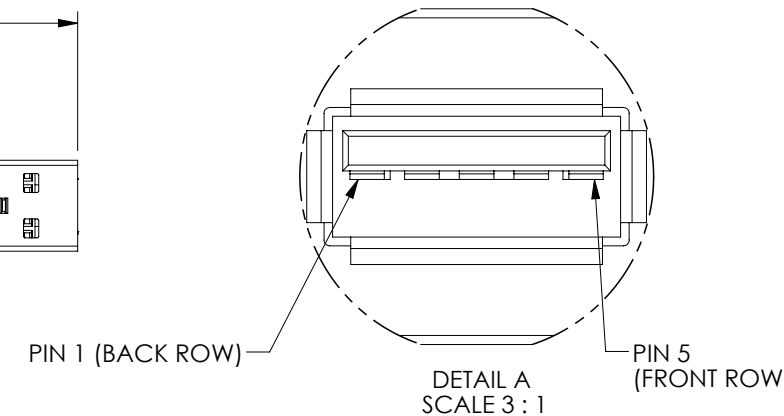
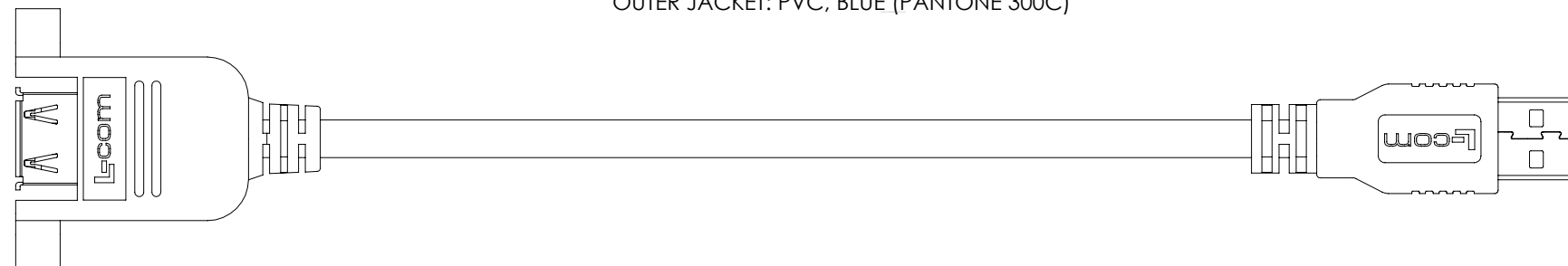
RECOMMENDED PANEL CUTOUT



2X, 4-40 UNC-2B
THREADED INSERT
(EMBEDDED)
PEM "STKB-440-4"
OR EQUIVALENT



UL 20276,
(2) SHIELDED TWISTED PAIRS, 30AWG WITH ALUMINUM MYLAR SHIELD
STRANDED TINNED COPPER AND DRAIN WIRE,
(1) UNSHIELDED TWISTED PAIR, 30AWG, STRANDED TINNED COPPER,
(2) CONDUCTORS, 24AWG, STRANDED TINNED COPPER,
OUTER JACKET: PVC, BLUE (PANTONE 300C)



DETAIL B
SCALE 3 : 1

NOTES:

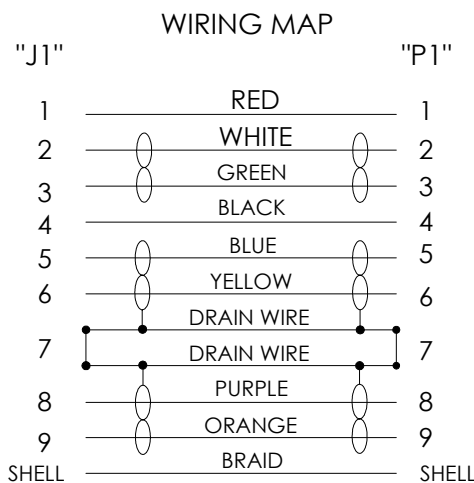
MATERIAL:
TYPE "A" JACK:
PANEL MOUNT HOUSING: PVC
CONNECTOR PLASTIC: (BLUE) PBT WITH GLASS FIBER
CONNECTOR CONTACTS: BRASS
CONNECTOR SHELL: SUS

TYPE "A" PLUG:
CONNECTOR SHELL: SPCC
CONNECTOR PLASTIC: (BLUE) PBT WITH GLASS FIBER, UL94V-0
CONNECTOR CONTACTS: PHOSPHOR BRONZE

FINISH:
CONNECTOR CONTACTS: GOLD, 30μINCHES
CONNECTOR SHELL: NICKEL

ENVIRONMENTAL:
OPERATING TEMPERATURE: -20°C TO +80°C

MISCELLANEOUS:
CABLE ASSEMBLY SHALL BE TESTED FOR CONTINUITY.
CABLE ASSEMBLY SHALL BE INDIVIDUALLY PACKAGED IN
ACCORDANCE WITH L-COM SPEC. PS-0031

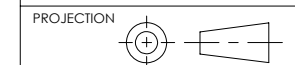


PART NUMBER	LENGTH	
	METERS	FEET
UPMAA-30-03M	0.3	0.98
UPMAA-30-05M	0.5	1.64
UPMAA-30-1M	1.0	3.28
UPMAA-30-2M	2.0	6.56
UPMAA-30-3M	3.0	9.84

RoHS Compliant ✓

UNLESS OTHERWISE SPECIFIED,
DIMENSIONS ARE IN INCHES [mm]
OVERALL CABLE LENGTH TOLERANCE:
≤12 [305] = +1 [25] / -0
>12 [305] ≤60 [1524] = +2[51] / -0
>60 [1524] ≤120 [3048] = +4 [102] / -0
>120 [3048] ≤300 [7620] = +6 [152] / -0
>300 [7620] = +5% / -0%

ALL OTHER DIMENSIONAL TOLERANCES:
.X = ±.2
.XX = ±.02
.XXX = ±.005



APPROVALS	DATE
DRAWN BY D. PARHAM	09/22/2011
CHECKED BY D. CASTRO	09/22/2011
APPROVED BY S. SMITH	09/27/2011

CONFIGURATION DETAILS OF UNDIMENSIONED FEATURES MAY VARY
COLOR VARIATIONS MAY OCCUR

L-com Global Connectivity
45 BEECHWOOD DRIVE
NORTH ANDOVER, MA
01845

CATEGORY: USB 3.0

PRODUCT DESCRIPTION: CA USB 3.0 A PNL/AM

SIZE	FSCM NO.	DWG. NO.	REV.
B	43321	UPMAA-30	B

SCALE: 1:1 CAD FILE: UPMAA-30.SLDRW SHEET 1 OF 1