

---

---

## USB 2.0 Hi-Speed Retimer Hub Family with Auto-FlexConnect Capability

---

---

### Highlights

- Single-chip USB 2.0 Hi-Speed hub retimer
  - 1 upstream port for USB Host / OTG connection
  - 1 downstream port with FlexConnect
- USB Battery Charging, revision 1.2, support on downstream ports (DCP, CDP, SDP)
- Battery charging support for China and Apple® profiles
- USB to SMBus, SPI, UART, and GPIO
  - Apple authentication chip support
- Retimer provides increased noise immunity, reducing the risk of compliance failure and interoperability issues
- Enables longer distance between USB host and USB device

### Target Applications

- Media hubs
- Infotainment head units
- Automotive breakout boxes
- Point of sale
- Host switch for diagnostic mode applications
- Host switch for field firmware upgrades

### Product Features

- **Auto-FlexConnect**
  - Downstream port able to swap with upstream port, allowing USB host swapping
  - Triggering FlexConnect
    - USB4712 and USB4712LS execute FlexConnect when new USB host is detected
    - USB4712PF executes FlexConnect via a package pin or USB command
- **MultiTRAK™**
  - Dedicated Transaction Translator per port
- **PortSwap**
  - Configurable differential intra-pair signal swapping
- **PHYBoost**
  - Programmable USB transceiver drive strength for recovering signal integrity
- **VariSense™**
  - Programmable USB receiver sensitivity
- USB Link Power Management (LPM) support
- Vendor Specific Messaging (VSM) support
- Enhanced OEM configuration options available
- 3.3 V supply voltage
- AEC-Q100 compliance
  - Microchip parts are tested to meet or exceed the requirements of the AEC-Q100 automotive qualification standards
- Packaging
  - 40-pin VQFN (5 x 5 mm)
- Environmental
  - Grade 3 automotive temperature range (-40° to +85°C)

## TO OUR VALUED CUSTOMERS

It is our intention to provide our valued customers with the best documentation possible to ensure successful use of your Microchip products. To this end, we will continue to improve our publications to better suit your needs. Our publications will be refined and enhanced as new volumes and updates are introduced.

If you have any questions or comments regarding this publication, please contact the Marketing Communications Department via E-mail at [docerrors@microchip.com](mailto:docerrors@microchip.com). We welcome your feedback.

### Most Current Data Sheet

To obtain the most up-to-date version of this data sheet, please register at our Worldwide Web site at:

<http://www.microchip.com>

You can determine the version of a data sheet by examining its literature number found on the bottom outside corner of any page. The last character of the literature number is the version number, (e.g., DS30000000A is version A of document DS30000000).

### Errata

An errata sheet, describing minor operational differences from the data sheet and recommended workarounds, may exist for current devices. As device/documentation issues become known to us, we will publish an errata sheet. The errata will specify the revision of silicon and revision of document to which it applies.

To determine if an errata sheet exists for a particular device, please check with one of the following:

- Microchip's Worldwide Web site; <http://www.microchip.com>
- Your local Microchip sales office (see last page)

When contacting a sales office, please specify which device, revision of silicon and data sheet (include -literature number) you are using.

### Customer Notification System

Register on our web site at [www.microchip.com](http://www.microchip.com) to receive the most current information on all of our products.

## Table of Contents

- 1.0 Preface ..... 4
- 2.0 Introduction ..... 7
- 3.0 Pin Descriptions and Configuration ..... 8
- 4.0 Device Connections ..... 14
- 5.0 Modes of Operation ..... 16
- 6.0 Device Configuration ..... 18
- 7.0 Device Interfaces ..... 19
- 8.0 Functional Descriptions ..... 21
- 9.0 Operational Characteristics ..... 26
- 10.0 Package Information ..... 34
- Appendix A: Data sheet Revision History ..... 38
- The Microchip Web Site ..... 40
- Customer Change Notification Service ..... 40
- Customer Support ..... 40
- Product Identification System ..... 41

# USB4712

---

## 1.0 PREFACE

### 1.1 General Terms

TABLE 1-1: GENERAL TERMS

Term	Description
ADC	Analog-to-Digital Converter
Byte	8 bits
CDC	Communication Device Class
EOP	End of Packet
EP	Endpoint
FIFO	First In First Out buffer
FS	Full-Speed
GPIO	General Purpose I/O
HS	Hi-Speed
Hub Feature Controller	The Hub Feature Controller, sometimes called a Hub Controller for short is the internal processor used to enable the unique features of the USB Controller Hub. This is not to be confused with the USB Hub Controller that is used to communicate the hub status back to the Host during a USB session.
I <sup>2</sup> C	Inter-Integrated Circuit
LS	Low-Speed
lsb	Least Significant Bit
LSB	Least Significant Byte
msb	Most Significant Bit
MSB	Most Significant Byte
N/A	Not Applicable
NC	No Connect
OTP	One Time Programmable
PCB	Printed Circuit Board
PHY	Physical Layer
PLL	Phase Lock Loop
RESERVED	Refers to a reserved bit field or address. Unless otherwise noted, reserved bits must always be zero for write operations. Unless otherwise noted, values are not guaranteed when reading reserved bits. Unless otherwise noted, do not read or write to reserved addresses.
SDK	Software Development Kit
SMBus	System Management Bus
UUID	Universally Unique Identifier
WORD	16 bits

## 1.2 Buffer Types

**TABLE 1-2: BUFFER TYPE DESCRIPTIONS**

Buffer	Description
I	Input.
IS	Input with Schmitt trigger.
O4	Output buffer with 4mA sink and 4mA source.
O12	Output buffer with 12mA sink and 12mA source.
OD12	Open-drain output with 12mA sink.
PU	Internal pull-up. Unless otherwise noted in the pin description, internal pull-ups are always enabled.  Internal pull-up resistors prevent unconnected inputs from floating. Do not rely on internal resistors to drive signals external to the device. When connected to a load that must be pulled high, an external resistor must be added.
PD	Internal pull-down. Unless otherwise noted in the pin description, internal pull-downs are always enabled.  Internal pull-down resistors prevent unconnected inputs from floating. Do not rely on internal resistors to drive signals external to the device. When connected to a load that must be pulled low, an external resistor must be added.
ICLK	Crystal oscillator input pin.
OCLK	Crystal oscillator output pin.
I/O-U	Analog input/output defined in USB specification.
I-R	RBIAS.
A	Analog.
P	Power pin.

## 1.3 Pin Reset States

The pin reset state definitions are detailed in [Table 1-3](#). Refer to [Section 3.0, "Pin Descriptions and Configuration"](#) for details on individual pin reset states.

**TABLE 1-3: PIN RESET STATE LEGEND**

Symbol	Description
A/P	Analog/Power Input
Z	Hardware disables output driver (high impedance)
PD-15k	Hardware enables internal 15kΩ pull-down
PD-67k	Hardware enables internal 67kΩ pull-down
PU-67k	Hardware enables internal 67kΩ pull-up
USB	USB line

# USB4712

---

## 1.4 Reference Documents

1. *Universal Serial Bus Revision 2.0 Specification*, <http://www.usb.org>
2. *USB4712 Auto-FlexConnect Operation* Application Note, <http://www.microchip.com>
3. *USB to GPIO Bridging with USB4712 Hub*, <http://www.microchip.com>
4. *USB to I<sup>2</sup>C Bridging with USB4712 Hub*, <http://www.microchip.com>
5. *Battery Charging Specification*, Revision 1.2, Dec. 07, 2010, <http://www.usb.org>
6. *I<sup>2</sup>C-Bus Specification*, Version 1.1, [http://www.nxp.com/documents/user\\_manual/UM10204.pdf](http://www.nxp.com/documents/user_manual/UM10204.pdf)
7. *System Management Bus Specification*, Version 1.0, <http://smbus.org/specs>

## 2.0 INTRODUCTION

### 2.1 General Description

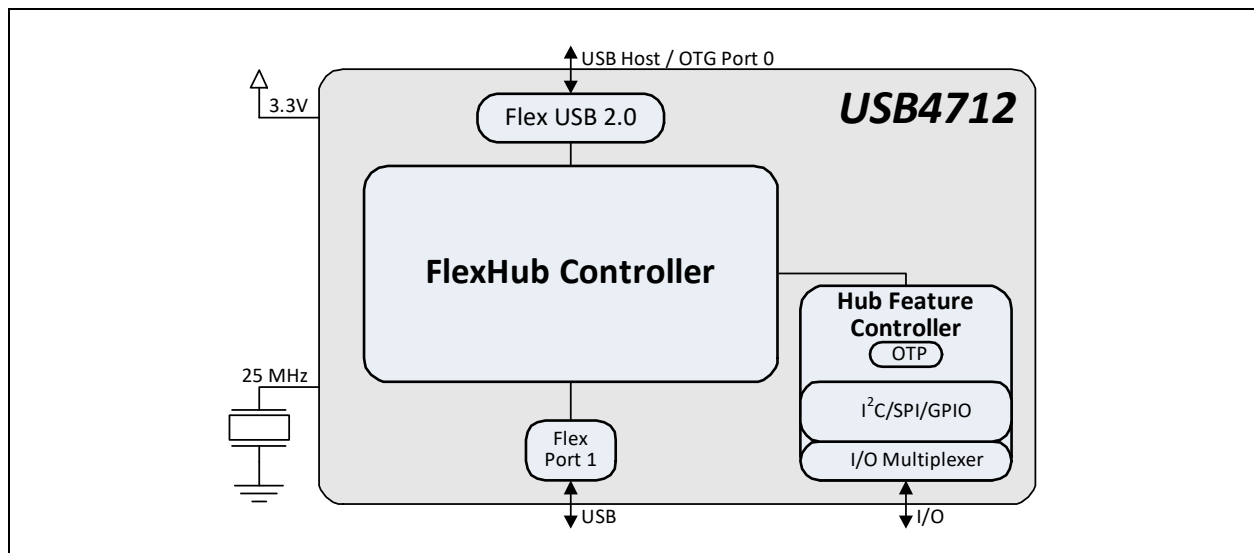
The Microchip family of USB4712 USB 2.0 Hi-Speed hub retimers are single-chip devices targeted for automotive applications. Primary functions of the devices include: single downstream USB port supporting USB 2.0 Low Speed/Full Speed/Hi-Speed, single USB 2.0 Hi-Speed upstream connection to a USB host / OTG port, battery charging support for BC1.2, Apple and China charging profiles, USB I/O bridging, and an on-chip microcontroller.

The USB4712 family employs unique Auto-FlexConnect USB functionality, whereby the downstream port can be reconfigured to become an upstream port, allowing the host or master capability to be switched between ports. This port/host becomes the master of the new USB bus, while the other port can connect as USB device.

**Note:** Auto-FlexConnect requires Battery Charging v1.2 to always be enabled to function. BC1.2 on USB4712PF may be optionally enabled or disabled without any negative effect.

The USB4712 devices are available in an Automotive Grade 3 (-40°C to +85°C) temperature range. An internal block diagram of the USB4712 is shown in [Figure 2-1](#).

**FIGURE 2-1: INTERNAL BLOCK DIAGRAM**



The USB4712 family of devices offer different feature sets depending upon the system needs. Specifically, FlexConnect can be executed automatically via a package pin or USB command. In some cases, the chip is capable of being cascaded. Additionally, the Hub Feature Controller, which can be used for bridging, can be enabled/on or disabled/off. [Table 2-1](#) provides a summary of the feature differences between family members.

**TABLE 2-1: FAMILY FEATURE MATRIX**

Part Number	Target Applications	Supports Head Unit Suspend State	Cascadeable	Trigger FlexConnect	Hub Feature Controller
USB4712	Passenger Port	Yes	No	Automatic when new host detected	On when not flexed (turns off when flexed)
USB4712PF	Passenger Port or Cable Extender	Yes	Yes	Executed via package pin or USB command	Always off
USB4712LS	Passenger Port or Cable Extender	No	Yes	Automatic when new host detected	On when not flexed (turns off when flexed)

# USB4712

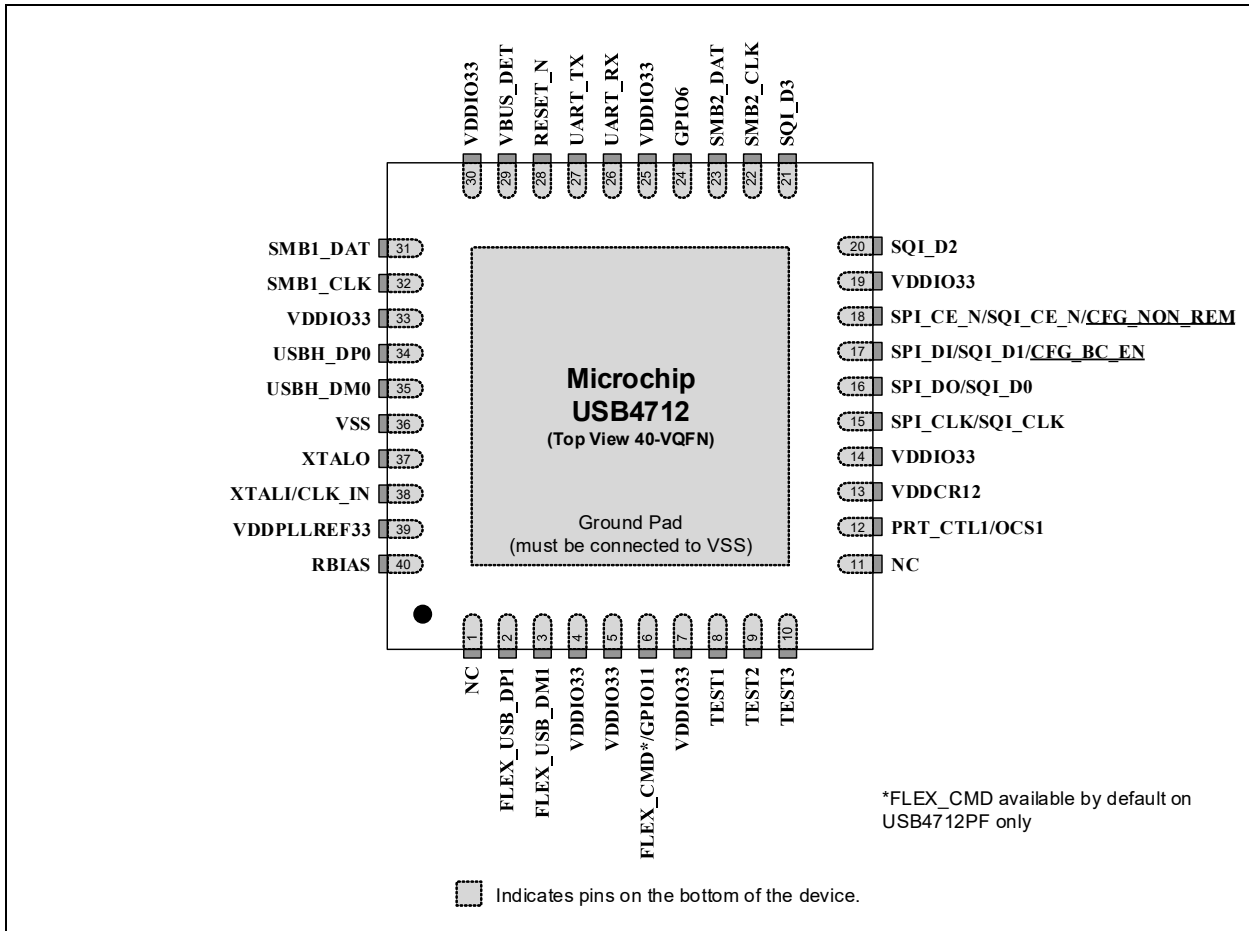
## 3.0 PIN DESCRIPTIONS AND CONFIGURATION

The pin assignments for the USB4712 family are detailed in [Section 3.1, "USB4712 Pin Assignments"](#). Pin descriptions are provided in [Section 3.2, "Pin Descriptions"](#).

### 3.1 USB4712 Pin Assignments

The device pin diagram for the USB4712 can be seen in [Figure 3-1](#). [Table 3-1](#) provides a USB4712 pin assignments table. Pin descriptions are provided in [Section 3.2, "Pin Descriptions"](#).

**FIGURE 3-1: USB4712 PIN ASSIGNMENTS**



**Note:** Configuration straps are identified by an underlined symbol name. Signals that function as configuration straps must be augmented with an external resistor when connected to a load.



**TABLE 3-1: USB4712 PIN ASSIGNMENTS**

Pin	Pin Name	Reset	Pin	Pin Name	Reset
1	NC	PD-67k	21	SQI_D3	Z
2	FLEX_USB_DP1	PD-15k	22	SMB2_CLK	Z
3	FLEX_USB_DM1	PD-15k	23	SMB2_DAT	Z
4	VDDIO33	A/P	24	GPIO6	Z
5	VDDIO33	A/P	25	VDDIO33	A/P
6	FLEX_CMD/GPIO11	Z	26	UART_RX	Z
7	VDDIO33	A/P	27	UART_TX	Z
8	TEST1	Z	28	RESET_N	PD-67k
9	TEST2	Z	29	VBUS_DET	Z
10	TEST3	Z	30	VDDIO33	A/P
11	NC	PD-67k	31	SMB1_DAT	Z
12	PRT_CTL1/OCS1	PD-67k	32	SMB1_CLK	Z
13	VDDCR12	A/P	33	VDDIO33	A/P
14	VDDIO33	A/P	34	USBH_DP0	USB
15	SPI_CLK/SQI_CLK	Z	35	USBH_DM0	USB
16	SPI_DO/SQI_D0	PD-67k	36	VSS	A/P
17	SPI_DI/SQI_D1/CFG_BC_EN	Z	37	XTALO	A/P
18	SPI_CE_N/SQI_CE_N/ CFG_NON_REM	PU-67k	38	XTALI/CLK_IN	A/P
19	VDDIO33	A/P	39	VDDPLLREF33	A/P
20	SQI_D2	Z	40	RBIAS	A/P

Exposed Pad (VSS) must be connected to ground.

**Note:** FLEX\_CMD function (pin 6) available by default on USB4712PF only.

# USB4712

## 3.2 Pin Descriptions

TABLE 3-2: PIN DESCRIPTIONS

Name	Symbol	Buffer Type	Description
<b>USB Interface</b>			
USB Upstream D+	<b>USBH_DP0</b>	I/O-U	Upstream USB 2.0 Data Plus (D+)
USB Upstream D-	<b>USBH_DM0</b>	I/O-U	Upstream USB 2.0 Data Minus (D-)
USB Downstream Port 1 D+	<b>FLEX_USB_DP1</b>	I/O-U	Downstream USB 2.0 Port 1 Data Plus (D+)
USB Downstream Port 1 D-	<b>FLEX_USB_DM1</b>	I/O-U	Downstream USB 2.0 Port 1 Data Minus (D-)
<b>USB Port Control Pins</b>			
USB Port 1 Power Enable	<b>PRT_CTL1</b>	I/O12	Active high control signal to enable power to downstream port 1.
USB Port 1 Over-current Sense	<b>OCSI</b>	I/O12	Overcurrent sense for port 1.
<b>SPI Interface Pins</b>			
SPI Clock	<b>SPI_CLK</b>	I/O4	SPI clock.
SPI Data Out	<b>SPI_DO</b>	I/O4	SPI output data. If the SPI interface is enabled, this signal is the data out for the SPI port.
SPI Data In	<b>SPI_DI</b>	I/O4	SPI input data. If the SPI interface is enabled, this signal must have a weak pull-down applied at all times to prevent floating.  <b>Note:</b> If SPI interface is not utilized, this pin cannot be left floating. It must be connected per the <b>CFG_BC_EN</b> pin description.
SPI Chip Enable	<b>SPI_CE_EN</b>	I/O4	Active low SPI chip enable input. If the SPI interface is enabled, this pin must be driven high in powerdown states.  <b>Note:</b> If SPI interface is not utilized, this pin cannot be left floating. It must be connected per the <b>CFG_NON_REM</b> pin description.
<b>SQI Interface Pins</b>			
SQI Clock	<b>SQI_CLK</b>	I/O4	SQI clock.
SQI Data 0-3	<b>SQI_D[0:3]</b>	I/O4	SQI Data 0-3. If the SQI interface is enabled, these signals function as Data 0 through 3.
SQI Chip Enable	<b>SQI_CE_EN</b>	I/O4	Active low SQI chip enable input. If the SQI interface is enabled, this pin requires an external pull-up resistor.  <b>Note:</b> If SQI interface is not utilized, this pin cannot be left floating. It must be connected per the <b>CFG_NON_REM</b> pin description.
<b>SMBus Interface Pins</b>			
SMBus 1 Clock	<b>SMB1_CLK</b>	I/OD12	SMBus 1 Master Clock  <b>Note:</b> Not available on USB4712PF - HFC is disabled by default.

**TABLE 3-2: PIN DESCRIPTIONS (CONTINUED)**

Name	Symbol	Buffer Type	Description
SMBus 1 Data	<b>SMB1_DAT</b>	I/OD12	SMBus 1 Master Data <b>Note:</b> Not available on USB4712PF - HFC is disabled by default.
SMBus 2 Clock	<b>SMB2_CLK</b>	I/OD12	SMBus 2 SLAVE <b>Note:</b> Disabled on USB4712PF to prevent interference with FlexConnect operation.
SMBus 2 Data	<b>SMB2_DAT</b>	I/OD12	SMBus 2 SLAVE <b>Note:</b> Disabled on USB4712PF to prevent interference with FlexConnect operation.
<b>UART Interface Pins</b>			
UART Transmit	<b>UART_TX</b>	O12	UART Transmit <b>Note:</b> Not available on USB4712PF - HFC is disabled by default.
UART Receive	<b>UART_RX</b>	I	UART Receive <b>Note:</b> Not available on USB4712PF - HFC is disabled by default.
<b>Miscellaneous</b>			
General Purpose Input/Output 6, 11	<b>GPIO6 GPIO11</b>	I/O12	General purpose inputs/outputs 6, 11. <b>Note:</b> GPIOs not available on USB4712PF - HFC is disabled by default.
VBUS Detection	<b>VBUS_DET</b>	I	This signal detects the state of the upstream bus power. When designing a detachable hub, this pin must be connected to the VBUS power pin of the upstream USB port through a resistor divider (50 kΩ by 100 kΩ) to provide 3.3 V. For self-powered applications with a permanently attached host, this pin must be connected to either 3.3 V or 5.0 V through a resistor divider to provide 3.3 V. In embedded applications, <b>VBUS_DET</b> may be controlled (toggled) when the host desires to renegotiate a connection without requiring a full reset of the device.
Reset Input	<b>RESET_N</b>	I	This active low signal is used by the system to reset the device. The active low pulse should be at least 1 μs wide.
Bias Resistor	<b>RBIAS</b>	I-R	A 12.0 kΩ ±1.0% resistor is attached from ground to this pin to set the transceiver's internal bias settings. Place the resistor as close to the device as possible with a dedicated, low impedance connection to the GND plane.
External 25 MHz Crystal Input	<b>XTALI</b>	ICLK	External 25 MHz crystal input.
External 25 MHz Reference Clock Input	<b>CLK_IN</b>	ICLK	External reference clock input.  The device may alternatively be driven by a single-ended clock oscillator. When this method is used, <b>XTALO</b> should be left unconnected.
External 25 MHz Crystal Output	<b>XTALO</b>	OCLK	External 25 MHz crystal output.

# USB4712

**TABLE 3-2: PIN DESCRIPTIONS (CONTINUED)**

Name	Symbol	Buffer Type	Description
Test 1	<b>TEST1</b>	A	Test 1 pin. This signal is used for test purposes and must always be pulled-up to resistor (4.7 kOhm recommended).
Test 2	<b>TEST2</b>	A	Test 2 pin. This signal is used for test purposes and may be pulled up to 3.3V or pulled-down to ground via a resistor (4.7kOhm recommended).
Test 3	<b>TEST3</b>	A	Test 3 pin. This signal is used for test purposes and may be pulled up to 3.3V or pulled-down to ground via a resistor (4.7kOhm recommended).
No Connect	<b>NC</b>	-	No Connect. This pin should be left unconnected for proper operation.
Flex Command	<b>FLEX_CMD</b>	I	Flex Command ( <b>USB4712PF Only</b> ) Controls state of FlexConnect.  0 = Not Flexed (Port 0 is UFP) 1 = Flexed (Port 1 is UFP)
<b>Configuration Straps</b>			
Non-Removable Port Configuration Strap	<u><b>CFG_NON_REM</b></u>	I	Non-Removable Ports Configuration Strap. This configuration strap controls selection of the non-removable port. See <a href="#">Note 3-1</a> .
Battery Charging Configuration Strap	<u><b>CFG_BC_EN</b></u>	I	Battery Charging Configuration Strap. This configuration strap controls the BC 1.2 enabling on the downstream port. See <a href="#">Note 3-1</a> .
<b>Power/Ground</b>			
+3.3V I/O Power Supply Input	<b>VDDIO33</b>	P	+3.3V I/O power supply input.
+3.3V Analog Power Supply Input	<b>VDDPLLREF33</b>	P	+3.3V master bias / PLL regulator supply input.
+1.2V Core Power Supply Output	<b>VDDCR12</b>	P	+1.2V digital core power supply output. <b>Note:</b> This signal requires connection of a 1uF low-ESR capacitor to ground.
Ground	<b>VSS</b>	P	Ground pins.

**Note 3-1** Configuration strap values are latched on Power-On Reset (POR) and the rising edge of **RESET\_N** (external chip reset). Configuration straps are identified by an underlined symbol name. Signals that function as configuration straps must be augmented with an external resistor when connected to a load. For additional information, refer to [Section 3.3, "Configuration Straps and Programmable Functions"](#).

## 3.3 Configuration Straps and Programmable Functions

Configuration straps are multi-function pins that are used during Power-On Reset (POR) or external chip reset (**RESET\_N**) to determine the default configuration of a particular feature. The state of the signal is latched following de-assertion of the reset. Configuration straps are identified by an underlined symbol name. This section details the various device configuration straps and associated programmable pin functions.

**Note:** The system designer must guarantee that configuration straps meet the timing requirements specified in [Section 9.6.2, "Power-On and Configuration Strap Timing"](#) and [Section 9.6.3, "Reset and Configuration Strap Timing"](#). If configuration straps are not at the correct voltage level prior to being latched, the device may capture incorrect strap values.

### 3.3.1 NON-REMOVABLE PORT CONFIGURATION (CFG\_NON\_REM)

The CFG\_NON\_REM configuration strap is used to configure the non-removable port settings of the device to one of two settings. These modes are selected by the configuration of an external resistor on the CFG\_NON\_REM pin. The resistor options are a 200 kΩ pull-down and 200 kΩ pull-up as shown in [Table 3-3](#).

**TABLE 3-3: CFG\_NON\_REM RESISTOR ENCODING**

<u>CFG_NON_REM</u> Resistor Value	Setting
200 kΩ Pull-Down	Port 1 removable
200 kΩ Pull-Up	Port 1 non-removable

### 3.3.2 BATTERY CHARGING CONFIGURATION (CFG\_BC\_EN)

The CFG\_BC\_EN configuration strap is used to configure the battery charging port settings of the device to one of two settings. These modes are selected by the configuration of an external resistor on the CFG\_BC\_EN pin. The resistor options are a 200 kΩ pull-down and 200 kΩ pull-up as shown in [Table 3-4](#).

**TABLE 3-4: CFG\_BC\_EN RESISTOR ENCODING**

<u>CFG_NON_REM</u> Resistor Value	Setting
200 kΩ Pull-Down	No battery charging
200 kΩ Pull-Up	Port 1 battery charging

**Note:** The standard port does not support battery charging and OCS (Port 2). See [Note 3-2](#).

**Note 3-2** BC1.2 must be enabled for Auto-FlexConnect feature to operate. USB4712PF may optionally leave BC1.2 enabled or disabled with no negative effect to standard (non-Automatic) FlexConnect operation.

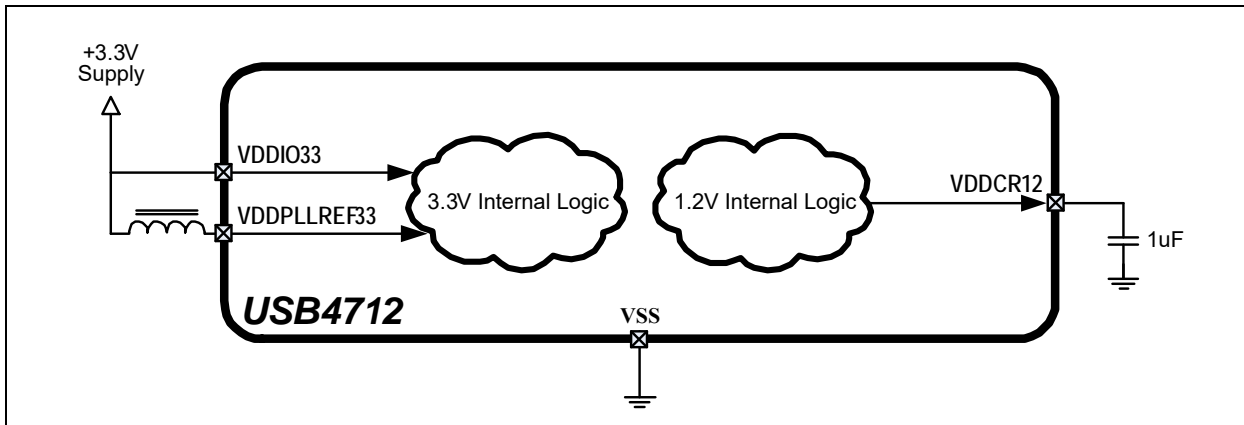
# USB4712

## 4.0 DEVICE CONNECTIONS

### 4.1 Power Connections

Figure 4-1 illustrates the device power connections.

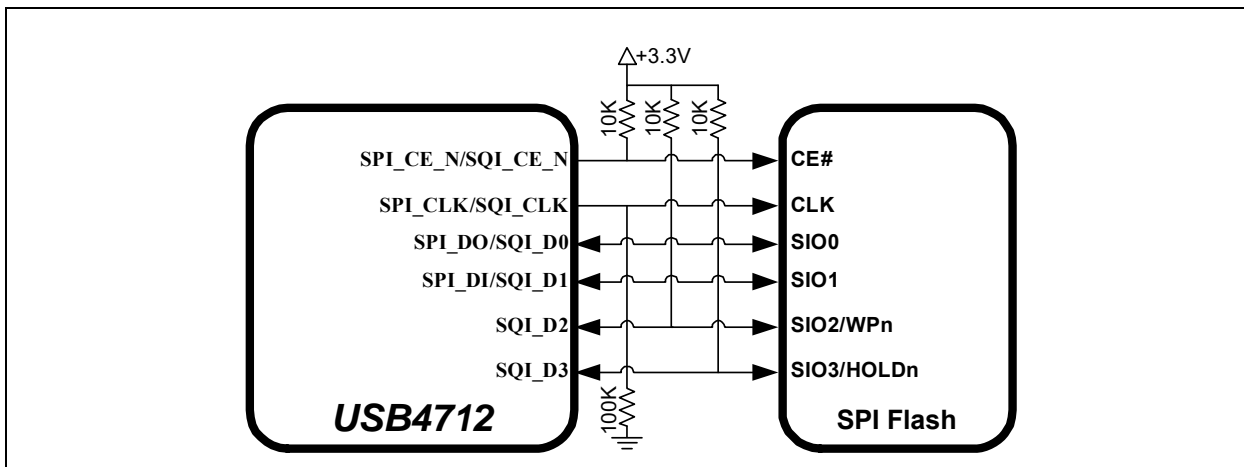
FIGURE 4-1: POWER CONNECTIONS



### 4.2 SPI Flash Connections

Figure 4-2 illustrates the device SPI Flash connections.

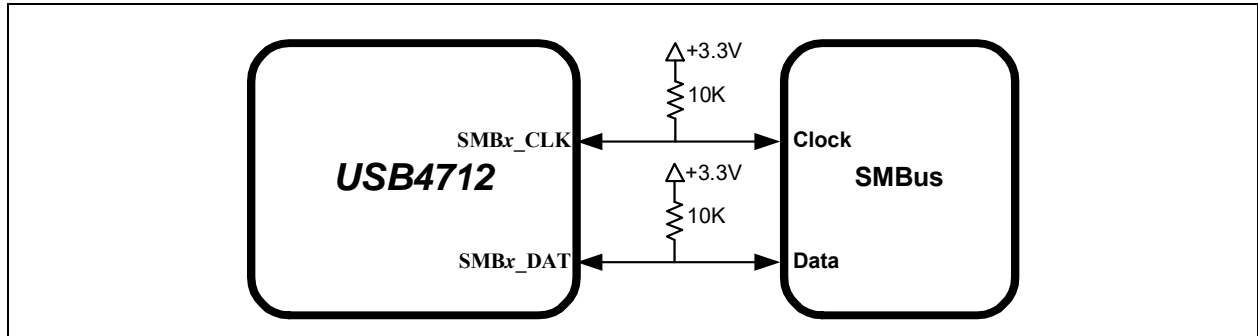
FIGURE 4-2: SPI FLASH CONNECTIONS



## 4.3 SMBus Connections

Figure 4-3 illustrates the device SMBus Connections.

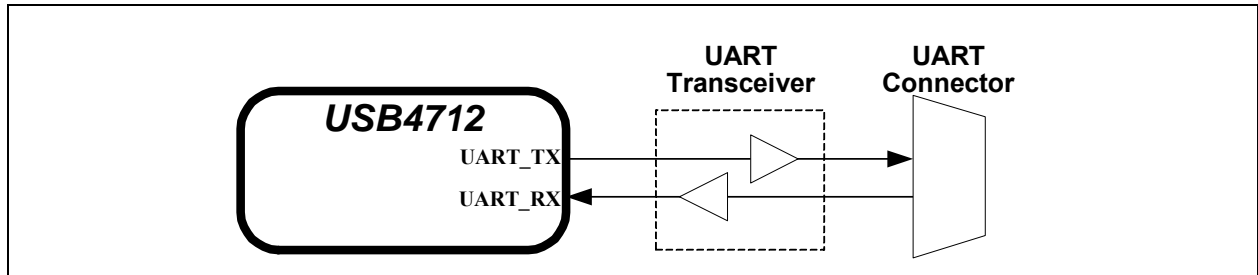
**FIGURE 4-3: SMBUS CONNECTIONS**



## 4.4 UART Connections

Figure 4-4 illustrates the device UART connections.

**FIGURE 4-4: UART CONNECTIONS**



# USB4712

## 5.0 MODES OF OPERATION

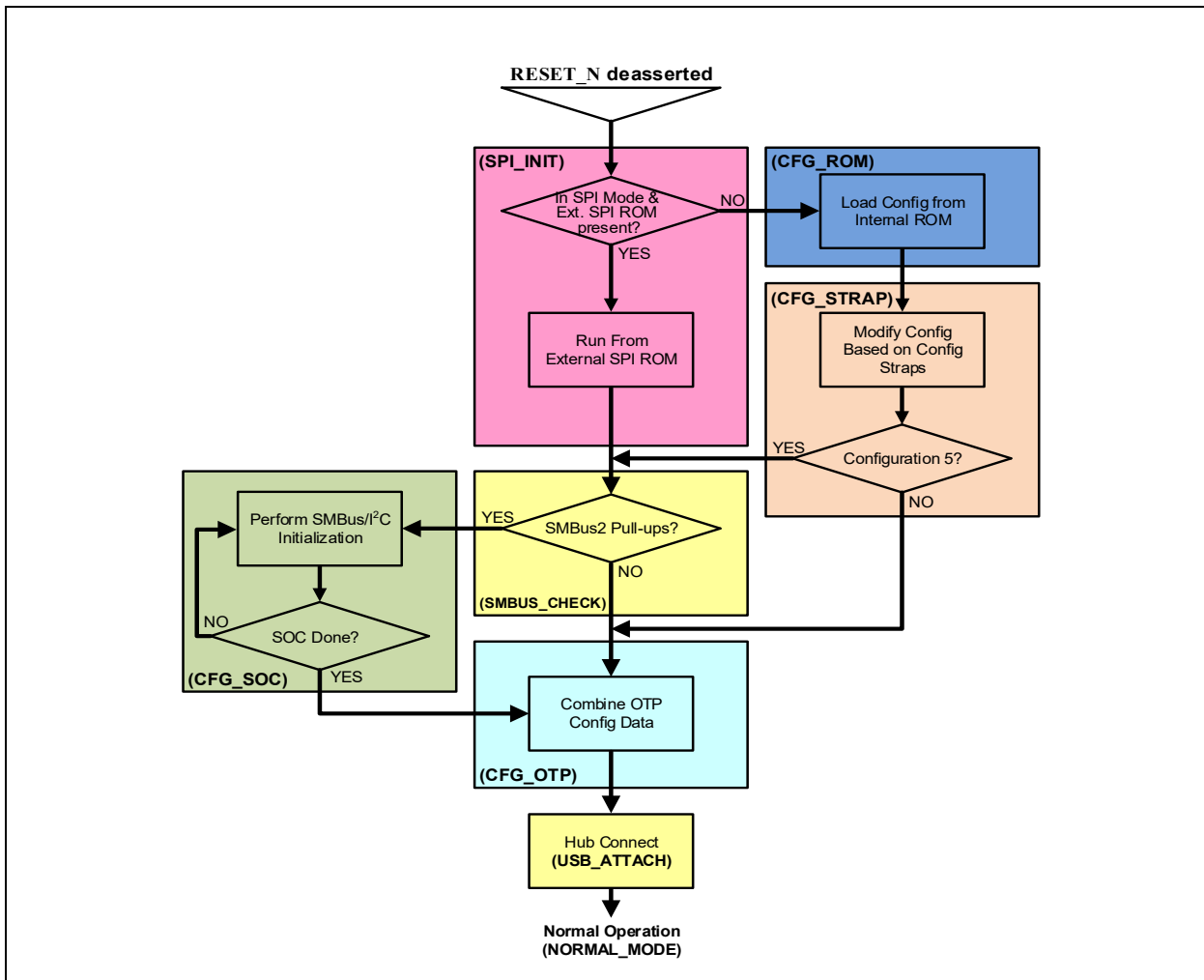
The device provides two main modes of operation: Standby Mode and Hub Mode. These modes are controlled via the **RESET\_N** pin, as shown in [Table 5-1](#).

**TABLE 5-1: MODES OF OPERATION**

RESET_N Input	Summary
0	<b>Standby Mode:</b> This is the lowest power mode of the device. No functions are active other than monitoring the <b>RESET_N</b> input. All port interfaces are high impedance and the PLL is halted. Refer to <a href="#">Section 8.9, "Resets"</a> for additional information on <b>RESET_N</b> .
1	<b>Hub (Normal) Mode:</b> The device operates as a configurable USB hub. This mode has various sub-modes of operation, as detailed in <a href="#">Figure 5-1</a> . Power consumption is based on the number of active ports, their speed, and amount of data received.

The flowchart in [Figure 5-1](#) details the modes of operation and details how the device traverses through the Hub Mode stages (shown in bold). The remaining sub-sections provide more detail on each stage of operation.

**FIGURE 5-1: HUB MODE FLOWCHART**





## 5.1 Boot Sequence

### 5.1.1 STANDBY MODE

If the **RESET\_N** pin is asserted, the hub will be in Standby Mode. This mode provides a very low power state for maximum power efficiency when no signaling is required. This is the lowest power state. In Standby Mode all downstream ports are disabled, the USB data pins are held in a high-impedance state, all transactions immediately terminate (no states saved), all internal registers return to their default state, the PLL is halted, and core logic is powered down in order to minimize power consumption. Because core logic is powered off, no configuration settings are retained in this mode and must be re-initialized after **RESET\_N** is negated high.

### 5.1.2 SPI INITIALIZATION STAGE (SPI\_INIT)

The first stage, the initialization stage, occurs on the deassertion of **RESET\_N**. In this stage, the internal logic is reset, the PLL locks if a valid clock is supplied, and the configuration registers are initialized to their default state. The internal firmware then checks for an external SPI ROM. The firmware looks for an external SPI flash device that contains a valid signature of "2DFU" (device firmware upgrade) beginning at address 0xFFFA. If a valid signature is found, then the SPI Firmware/external SPI ROM is enabled and the code execution begins at address 0x0000 in the external SPI device. If a valid signature is not found, then execution continues from internal ROM (CFG\_ROM stage).

When using an external SPI ROM, a minimum of 2.2 Mbit is required, and 60 MHz or faster SPI ROM must be used. Both 1- and 2-bit SPI ROM are supported. For optimum throughput, a 2-bit SPI ROM is recommended. Both mode 0 and mode 3 SPI flashes are supported.

If the system is not strapped for SPI Mode, code execution will continue from internal ROM (CFG\_ROM stage).

### 5.1.3 CONFIGURATION FROM INTERNAL ROM STAGE (CFG\_ROM)

In this stage, the internal firmware loads the default values from the internal ROM. Most of the hub configuration registers, USB descriptors, electrical settings, etc. will be initialized in this state even when running from SPI.

### 5.1.4 OTP CONFIGURATION STAGE (CFG\_OTP)

Once the SOC has indicated that it is done with configuration, all configuration data is combined in this stage. The default data, the SOC configuration data, and the OTP data are all combined in the firmware and the device is programmed.

### 5.1.5 HUB CONNECT STAGE (USB\_ATTACH)

Once the hub registers are updated through default values, SMBus master, and OTP, the device firmware will enable attaching the USB host by setting the **USB\_ATTACH** bit in the **HUB\_CMD\_STAT** register. The device will remain in the Hub Connect stage indefinitely until the **VBUS** function is deasserted/assertion of external **RESET\_N** pin.

### 5.1.6 NORMAL MODE (NORMAL\_MODE)

Lastly, the hub enters Normal Mode of operation. In this stage full USB operation is supported under control of the USB Host on the upstream port. The device will remain in the normal mode until the operating mode is changed by the USB Host.

If **RESET\_N** is asserted low, then Standby Mode is entered. The device may then be placed into any of the designated hub stages. Asserting a soft disconnect on the upstream port will cause the hub to return to the Hub Connect stage until the soft disconnect is negated.

# USB4712

---

## 6.0 DEVICE CONFIGURATION

The device supports a large number of features (some mutually exclusive), and must be configured in order to correctly function when attached to a USB host controller. The hub can be configured either internally or externally depending on the implemented interface.

Microchip provides a comprehensive software programming tool, MPLAB Connect (formerly ProTouch2), for OTP configuration of various USB4712 functions and registers. All configuration is to be performed via the MPLAB Connect Configurator programming tool. For additional information on this tool, refer to the MPLAB Connect Configurator programming tool product page at <http://www.microchip.com/design-centers/usb/mplab-connect-configurator>.

**Note:** Device configuration straps and programmable pins are detailed in [Section 3.3, "Configuration Straps and Programmable Functions,"](#) on page 13.  
Refer to [Section 7.0, "Device Interfaces"](#) for detailed information on each device interface.

## 7.0 DEVICE INTERFACES

The USB4712 provides multiple interfaces for configuration, external memory access, etc. This section details the various device interfaces and their usage:

- [SPI/SQI Master Interface](#)
- [SMBus/I<sup>2</sup>C Master/Slave Interfaces](#)
- [UART Interface](#)

**Note:** For details on how to enable each interface, refer to [Section 3.3, "Configuration Straps and Programmable Functions"](#).

For information on device connections, refer to [Section 4.0, "Device Connections"](#). For information on device configuration, refer to [Section 6.0, "Device Configuration"](#).

Microchip provides a comprehensive software programming tool, MPLAB Connect (formerly ProTouch2), for configuring the USB4712 functions, registers and OTP memory. All configuration is to be performed via the MPLAB Connect Configurator programming tool. For additional information on this tool, refer to the MPLAB Connect Configurator programming tool product page at <http://www.microchip.com/design-centers/usb/mplab-connect-configurator>.

### 7.1 SPI/SQI Master Interface

The SPI/SQI controller has two basic modes of operation: execution of an external hub firmware image, or the USB to SPI bridge. On power up, the firmware looks for an external SPI flash device that contains a valid signature of 2DFU (device firmware upgrade) beginning at address 0xFFFFA. If a valid signature is found, then the external ROM mode is enabled and the code execution begins at address 0x0000 in the external SPI device. If a valid signature is not found, then execution continues from internal ROM and the SPI interface can be used as a USB to SPI bridge.

The second mode of operation is the USB to SPI bridge operation. Additional details on this feature can be found in [Section 8.5, "USB to SPI Bridging"](#) as well as the *AN2430 - USB to SPI Bridging with USB4715 and USB49xx* application note.

[Table 7-1](#) details how the associated pins are mapped in SPI vs. SQI mode

**TABLE 7-1: SPI/SQI PIN USAGE**

SPI Mode	SQI Mode	Description
SPI_CE_N	SQI_CE_N	SPI/SQI Chip Enable (Active Low)
SPI_CLK	SQI_CLK	SPI/SQI Clock
SPI_DO	SQI_D0	SPI Data Out; SQI Data I/O 0
SPI_DI	SQI_D1	SPI Data In; SQI Data I/O 1
-	SQI_D2	SQI Data I/O 2
-	SQI_D3	SQI Data I/O 3

**Note:** For SPI timing information, refer to [Section 9.6.7, "SPI/SQI Timing"](#).

### 7.2 SMBus/I<sup>2</sup>C Master/Slave Interfaces

The USB4712 provides two independent SMBus/I<sup>2</sup>C controllers SMBus 1 and SMBus 2, which can be used to access internal device run time registers or program the internal OTP memory. SMBus 1 is used as the USB to SMBus/I<sup>2</sup>C bridge, and SMBus 2 is used as the slave interface. The device contains two 128 byte buffers to enable simultaneous master/slave operation and to minimize firmware overhead in processed SMBus/I<sup>2</sup>C packets.

**Note:** For SMBus/I<sup>2</sup>C timing information, refer to [Section 9.6.5, "SMBus Timing"](#) and [Section 9.6.6, "I<sup>2</sup>C Timing"](#).

# USB4712

---

## 7.3 UART Interface

The device incorporates a configurable universal asynchronous receiver/transmitter (UART) that is functionally compatible with the NS 16550AF, 16450, 16450 ACE registers and the 16C550A. The UART performs serial-to-parallel conversion on received characters and parallel-to-serial conversion on transmit characters. Two sets of baud rates are provided: 24 Mhz and 16 MHz. When the 24 Mhz source clock is selected, standard baud rates from 50 to 115.2 K are available. When the source clock is 16 MHz, baud rates from 125 K to 1,000 K are available. The character options are programmable for the transmission of data in word lengths of from five to eight, 1 start bit; 1, 1.5 or 2 stop bits; even, odd, sticky or no parity; and prioritized interrupts. The UART contains a programmable baud rate generator that is capable of dividing the input clock or crystal by a number from 1 to 65535. The UART is also capable of supporting the MIDI data rate.

### 7.3.1 TRANSMIT OPERATION

Transmission is initiated by writing the data to be sent to the TX Holding Register or TX FIFO (if enabled). The data is then transferred to the TX Shift Register together with a start bit and parity and stop bits as determined by settings in the Line Control Register. The bits to be transmitted are then shifted out of the TX Shift Register in the order Start bit, Data bits (LSB first), Parity bit, Stop bit, using the output from the Baud Rate Generator (divided by 16) as the clock.

If enabled, a TX Holding Register Empty interrupt will be generated when the TX Holding Register or the TX FIFO (if enabled) becomes empty.

When FIFOs are enabled (i.e. bit 0 of the FIFO Control Register is set), the UART can store up to 16 bytes of data for transmission at a time. Transmission will continue until the TX FIFO is empty. The FIFO's readiness to accept more data is indicated by interrupt.

### 7.3.2 RECEIVE OPERATION

Data is sampled into the RX Shift Register using the Receive clock, divided by 16. The Receive clock is provided by the Baud Rate Generator. A filter is used to remove spurious inputs that last for less than two periods of the Receive clock. When the complete word has been clocked into the receiver, the data bits are transferred to the RX Buffer Register or to the RX FIFO (if enabled) to be read by the CPU. (The first bit of the data to be received is placed in bit 0 of this register.) The receiver also checks that the parity bit and stop bits are as specified by the Line Control Register.

If enabled, an RX Data Received interrupt will be generated when the data has been transferred to the RX Buffer Register or, if FIFOs are enabled, when the RX Trigger Level has been reached. Interrupts can also be generated to signal RX FIFO Character Timeout, incorrect parity, a missing stop bit (frame error) or other Line Status errors.

When FIFOs are enabled (i.e. bit 0 of the FIFO Control Register is set), the UART can store up to 16 bytes of received data at a time. Depending on the selected RX Trigger Level, interrupt will go active to indicate that data is available when the RX FIFO contains 1, 4, 8 or 14 bytes of data.

## 8.0 FUNCTIONAL DESCRIPTIONS

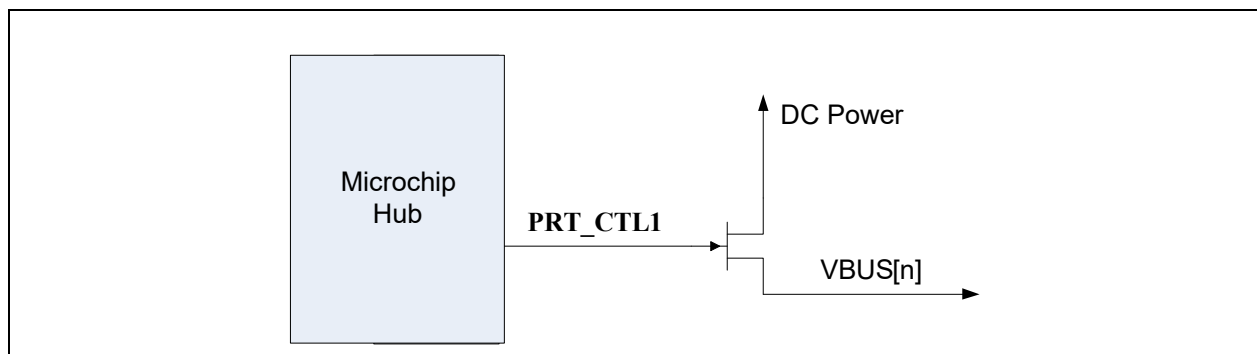
This section details various USB4712 functions, including:

- [Downstream Battery Charging](#)
- [Auto-FlexConnect](#)
- [USB to GPIO Bridging](#)
- [USB to SMBus/I2C Bridging](#)
- [USB to SPI Bridging](#)
- [USB to UART Bridging](#)
- [Link Power Management \(LPM\)](#)
- [Port Power Control](#)
- [Resets](#)

### 8.1 Downstream Battery Charging

The device can be configured by an OEM to have the downstream port support battery charging. The hub's role in battery charging is to provide acknowledgment to a device's query as to whether the hub system supports USB battery charging. The hub silicon does not provide any current or power FETs or any additional circuitry to actually charge the device. Those components must be provided externally by the OEM.

**FIGURE 8-1: BATTERY CHARGING EXTERNAL POWER SUPPLY**



If the OEM provides an external supply capable of supplying current per the battery charging specification, the hub can be configured to indicate the presence of such a supply from the device. This indication, via a handshake on the D+ and D- at the start of the connection with the device, is on a per port basis.

For detailed information on utilizing the USB4712 battery charging feature, refer to the application note “*USB Battery Charging with Microchip USB4712 Hub*”, which can be found on the Microchip USB4712 product page at [www.microchip.com/USB4712](http://www.microchip.com/USB4712).

### 8.2 Auto-FlexConnect

The USB4712 employs unique Auto-FlexConnect USB functionality, whereby the downstream port can be reconfigured to become an upstream port, allowing the host or master capability to be switched between ports. This port/host becomes the master of the new USB bus, while the other port can connect as USB device. The Auto-FlexConnect capability enables the host/device swap to take place automatically. When the USB4712 detects a USB device disconnect, the Auto-FlexConnect feature attempts to detect a newly connected host on the downstream port. FlexConnect activates if a new host on the downstream port is detected. If a new host is not detected, the hub remains in the default “unflexed” state.

FlexConnect can also be manually enabled through any of the following three methods. (See [Note 8-1](#).)

- **SMBus Control:** An embedded SMBus master can manually control the state of the FlexConnect feature through basic write/read operations.
- **USB Command:** FlexConnect can be manually initiated via a special USB command directed to the hub's internal Hub Feature Controller device.
- **Direct Pin Control:** Any available GPIO pin on the hub can be assigned the role of a manual FlexConnect control pin.

# USB4712

---

**Note 8-1** The Auto-FlexConnect feature requires that USB Battery Charging (BC1.2) be enabled.

For detailed information on utilizing the USB4712 FlexConnect feature, refer to the application note “*USB4712 Auto-FlexConnect Operation*”.

## 8.3 USB to GPIO Bridging

The USB to GPIO bridging feature of the USB4712 provides system designers expanded system control and potential BOM reduction. General Purpose Input/Outputs (GPIOs) may be used for any general 3.3V level digital control and input functions.

Commands may be sent from the USB Host to the internal Hub Feature Controller device in the Microchip hub to perform the following functions:

- Set the direction of the GPIO (input or output)
- Enable a pull-up resistor
- Enable a pull-down resistor
- Read the state
- Set the state

For detailed information on utilizing the USB4712 USB to GPIO bridging feature, refer to the application note “*USB to GPIO Bridging with Microchip USB4712 Hub*”.

## 8.4 USB to SMBus/I<sup>2</sup>C Bridging

The USB to SMBus/I<sup>2</sup>C bridging feature of the USB4712 provides system designers expanded system control and potential BOM reduction. The use of a separate USB to SMBus/I<sup>2</sup>C device is no longer required and a downstream USB port is not lost, as occurs when a standalone USB to SMBus/I<sup>2</sup>C device is implemented.

Commands may be sent from the USB Host to the internal Hub Feature Controller device in the Microchip hub to perform the following functions:

- Configure SMBus/I<sup>2</sup>C Pass-Through Interface
- SMBus/I<sup>2</sup>C Write
- SMBus/I<sup>2</sup>C Read

For detailed information on utilizing the USB4712 USB to SMBus/I<sup>2</sup>C bridging feature, refer to the application note “*AN2438 - USB to I<sup>2</sup>C Bridging with Microchip USB4712 Hub*”.

## 8.5 USB to SPI Bridging

The USB to SPI bridging feature of the USB4712 provides system designers expanded system control and potential BOM reduction. The use of a separate USB to SPI device is no longer required and a downstream USB port is not lost, as occurs when a standalone USB to SPI device is implemented.

Commands may be sent from the USB Host to the internal Hub Feature Controller device in the Microchip hub to perform the following functions:

- Enable SPI Pass-Through Interface
- SPI Write/Read
- Disable SPI Pass-Through Interface

For detailed information on utilizing the USB4712 USB to SPI bridging feature, refer to the application note “*USB to SPI Bridging with Microchip USB4712 Hub*”.

## 8.6 USB to UART Bridging

The USB to UART bridging feature of the USB4712 provides system designers with expanded system control and potential BOM reduction. When using Microchip's USB hubs, a separate USB to UART device is no longer required and a downstream USB port is not lost, as occurs when a standalone USB to UART device is implemented.

Commands may be sent from the USB Host to the internal Hub Feature Controller device in the Microchip hub to perform the following functions:

- Enable/Disable UART Interface
- Set UART Interface Baud Rate
- UART Write
- UART Read

For detailed information on utilizing the USB4712 USB to UART bridging feature, refer to the application note “*USB to UART Bridging with Microchip USB4712 Hub*”.

## 8.7 Link Power Management (LPM)

The device supports the L0 (On), L1 (Sleep), and L2 (Suspend) link power management states. These supported LPM states offer low transitional latencies in the tens of microseconds versus the much longer latencies of the traditional USB suspend/resume in the tens of milliseconds. The supported LPM states are detailed in [Table 8-1](#).

**TABLE 8-1: LPM STATE DEFINITIONS**

State	Description	Entry/Exit Time to L0
L2	Suspend	Entry: ~3 ms Exit: ~2 ms (from start of RESUME)
L1	Sleep	Entry: <10 us Exit: <50 us
L0	Fully Enabled (On)	-

## 8.8 Port Power Control

Port power and over-current sense share the same pin (**PRT\_CTL1/OCS1**) for each port. These functions can be controlled directly from the USB hub, or via the processor.

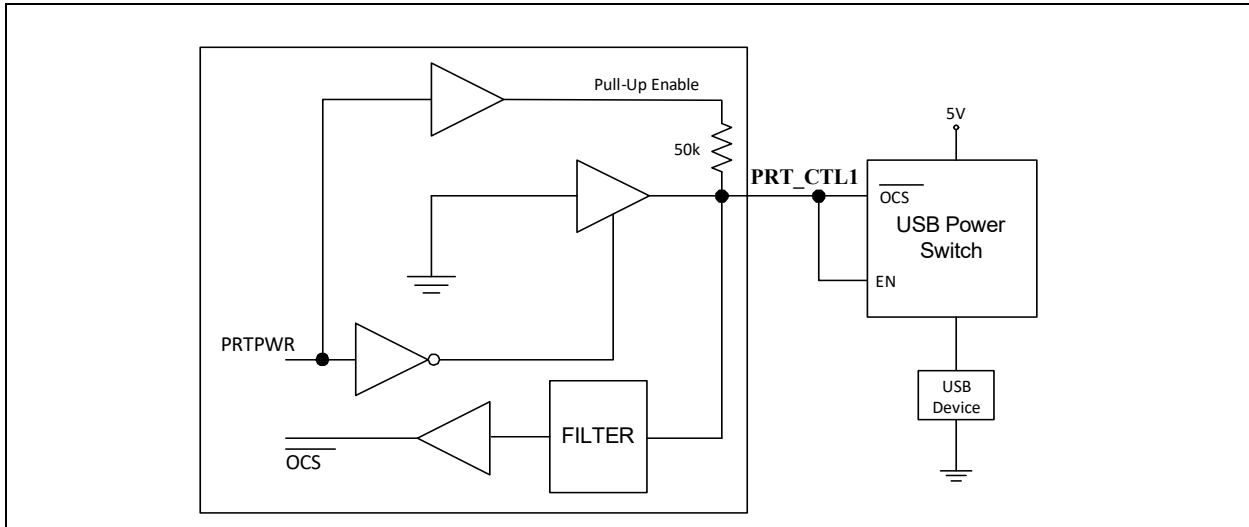
### 8.8.1 PORT CONNECTION IN COMBINED MODE

#### 8.8.1.1 Port Power Control using USB Power Switch

When operating in combined mode, the device will have one port power control and over-current sense pin for each downstream port. When disabling port power, the driver will actively drive a '0'. To avoid unnecessary power dissipation, the pull-up resistor will be disabled at that time. When port power is enabled, it will disable the output driver and enable the pull-up resistor, making it an open drain output. If there is an over-current situation, the USB Power Switch will assert the open drain OCS signal. The Schmidt trigger input will recognize that as a low. The open drain output does not interfere. The over-current sense filter handles the transient conditions such as low voltage while the device is powering up.

# USB4712

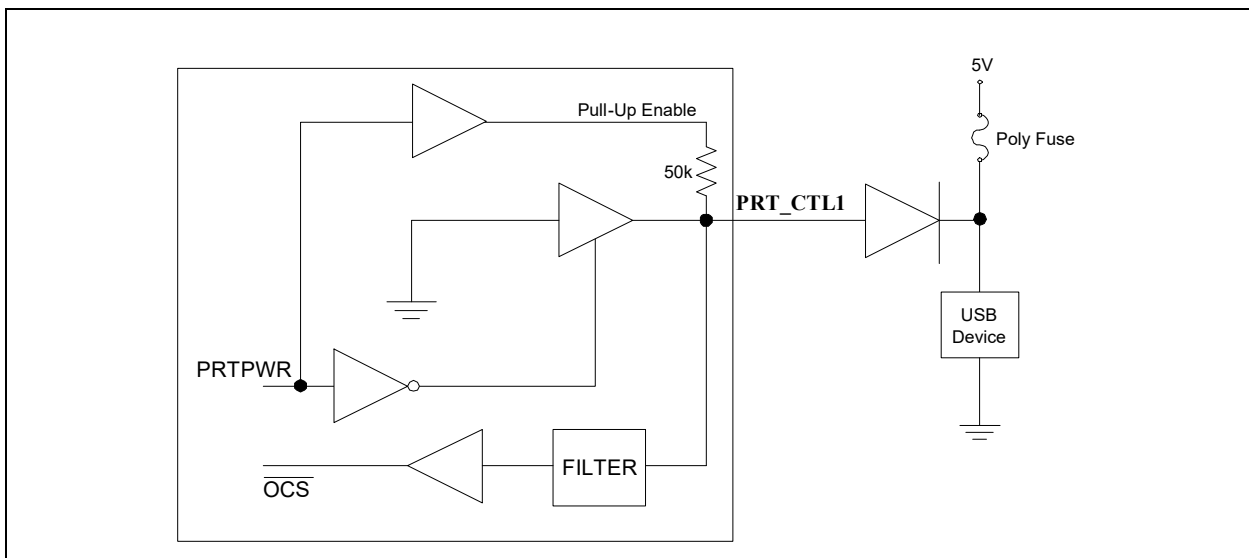
**FIGURE 8-2: PORT POWER CONTROL WITH USB POWER SWITCH**



## 8.8.1.2 Port Power Control using Poly Fuse

When using the device with a poly fuse, there is no need for an output power control. To maintain consistency, the same circuit will be used. A single port power control and over-current sense for each downstream port is still used from the Hub's perspective. When disabling port power, the driver will actively drive a '0'. This will have no effect as the external diode will isolate pin from the load. When port power is enabled, it will disable the output driver and enable the pull-up resistor. This means that the pull-up resistor is providing 3.3 volts to the anode of the diode. If there is an over-current situation, the poly fuse will open. This will cause the cathode of the diode to go to 0 volts. The anode of the diode will be at 0.7 volts, and the Schmidt trigger input will register this as a low resulting in an over-current detection. The open drain output does not interfere.

**FIGURE 8-3: PORT POWER CONTROL USING A POLY FUSE**





## 8.9 Resets

The device includes the following chip-level reset sources:

- [Power-On Reset \(POR\)](#)
- [External Chip Reset \(RESET\\_N\)](#)
- [USB Bus Reset](#)

### 8.9.1 POWER-ON RESET (POR)

A power-on reset occurs whenever power is initially supplied to the device, or if power is removed and reapplied to the device. A timer within the device will assert the internal reset per the specifications listed in [Section 9.6.2, "Power-On and Configuration Strap Timing," on page 29](#).

### 8.9.2 EXTERNAL CHIP RESET (RESET\_N)

A valid hardware reset is defined as assertion of **RESET\_N**, after all power supplies are within operating range, per the specifications in [Section 9.6.3, "Reset and Configuration Strap Timing," on page 30](#). While reset is asserted, the device (and its associated external circuitry) enters Standby Mode and consumes minimal current.

Assertion of **RESET\_N** causes the following:

1. The PHY is disabled and the differential pairs will be in a high-impedance state.
2. All transactions immediately terminate; no states are saved.
3. All internal registers return to the default state.
4. The external crystal oscillator is halted.
5. The PLL is halted.

<b>Note:</b> All power supplies must have reached the operating levels mandated in <a href="#">Section 9.2, "Operating Conditions**," on page 26</a> , prior to (or coincident with) the assertion of <b>RESET_N</b> .
------------------------------------------------------------------------------------------------------------------------------------------------------------------------------------------------------------------------

### 8.9.3 USB BUS RESET

In response to the upstream port signaling a reset to the device, the device performs the following:

1. Sets default address to 0.
2. Sets configuration to Unconfigured.
3. Moves device from suspended to active (if suspended).
4. Complies with the USB Specification for behavior after completion of a reset sequence.

The host then configures the device in accordance with the USB Specification.

<b>Note:</b> The device does not propagate the upstream USB reset to downstream devices.
------------------------------------------------------------------------------------------

# USB4712

## 9.0 OPERATIONAL CHARACTERISTICS

### 9.1 Absolute Maximum Ratings\*

+3.3 V Supply Voltage (VDDIO33, VDDPLLREF33) (Note 9-1)	-0.5 V to +4.6 V
Positive voltage on input signal pins, with respect to ground (Note 9-2)	+4.6 V
Negative voltage on input signal pins, with respect to ground	-0.5 V
Positive voltage on XTALI/CLK_IN, with respect to ground	+2.1 V
Positive voltage on USB DP/DM signal pins, with respect to ground	+6.0 V
Storage Temperature	-55°C to +150°C
Junction Temperature	+125°C
Lead Temperature Range	Refer to JEDEC Spec. J-STD-020
HBM ESD Performance	5 kV

**Note 9-1** When powering this device from laboratory or system power supplies, it is important that the absolute maximum ratings not be exceeded or device failure can result. Some power supplies exhibit voltage spikes on their outputs when AC power is switched on or off. In addition, voltage transients on the AC power line may appear on the DC output. If this possibility exists, it is suggested to use a clamp circuit.

**Note 9-2** This rating does not apply to the following pins: All USB DM/DP pins, XTALI/CLK\_IN, and XTALO

\*Stresses exceeding those listed in this section could cause permanent damage to the device. This is a stress rating only. Exposure to absolute maximum rating conditions for extended periods may affect device reliability. Functional operation of the device at any condition exceeding those indicated in Section 9.2, "Operating Conditions\*\*", Section 9.5, "DC Specifications", or any other applicable section of this specification is not implied.

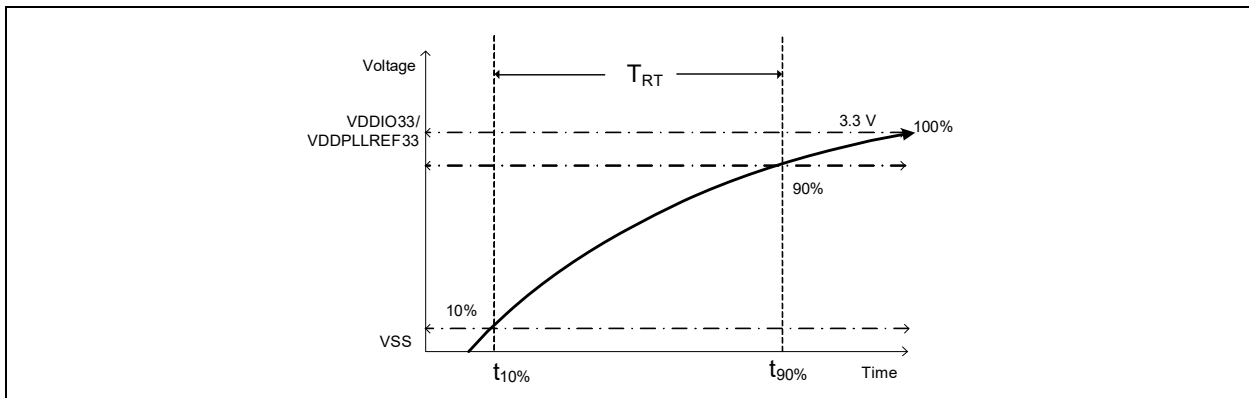
### 9.2 Operating Conditions\*\*

+3.3 V Supply Voltage (VDDIO33, VDDPLLREF33)	+3.0 V to +3.6 V
Input Signal Pins Voltage (Note 9-2)	-0.3 V to +3.6 V
XTALI/CLK_IN Voltage	-0.3 V to +1.5 V
USB 2.0 DP/DM Signal Pins Voltage	-0.3 V to +5.5 V
Ambient Operating Temperature in Still Air (T <sub>A</sub> )	-40°C to +85°C
+3.3 V Supply Voltage Rise Time (T <sub>RT</sub> in Figure 9-1)	5ms

\*\*Proper operation of the device is guaranteed only within the ranges specified in this section.

**Note:** Do not drive input signals without power supplied to the device.

**FIGURE 9-1: POWER SUPPLY RISE TIME MODEL**



**Note:** The rise time for the 3.3V supply can be extended to 100ms max if RESET\_N is actively driven low, typically by another IC, until 1  $\mu$ s after all supplies are within operating range.

## 9.3 Package Thermal Specifications

**TABLE 9-1: PACKAGE THERMAL PARAMETERS**

Symbol	$^{\circ}\text{C/W}$	Velocity (Meters/s)
$\Theta_{JA}$	35	0
	31	1
$\Theta_{JB}$	19	0
$\Psi_{JT}$	0.3	0
$\Theta_{JC}$	2.4	0

**Note:** Thermal parameters are measured or estimated for devices in a multi-layer 2S2P PCB per JESDN51.

## 9.4 Power Consumption

This section details the power consumption of the device as measured during various modes of operation. Power dissipation is determined by temperature, supply voltage, and external source/sink requirements.

**TABLE 9-2: DEVICE POWER CONSUMPTION**

Description	Typical Current (mA)	Maximum Current (mA)
<b>Reset Current (mA)</b>	0.40	3.60
<b>Suspend Current (mA)</b>	0.40	3.60
<b>Idle</b>	56	67
<b>Active Operation (1 Full-Speed Device)</b>	57	58
<b>Active Operation (1 Hi-Speed Device)</b>	73	74

# USB4712

## 9.5 DC Specifications

**TABLE 9-3: I/O DC ELECTRICAL CHARACTERISTICS**

Parameter	Symbol	Min	Typical	Max	Units	Notes
<b>I Type Input Buffer</b>						
Low Input Level	$V_{IL}$	-0.3		0.9V	V	
High Input Level	$V_{IH}$	1.25		<b>VDDIO33+0.3</b>	V	
<b>IS Type Input Buffer</b>						
Low Input Level	$V_{IL}$	-0.3		0.9V	V	
High Input Level	$V_{IH}$	1.25		<b>VDDIO33+0.3</b>	V	
Schmitt Trigger Hysteresis ( $V_{IHT} - V_{ILT}$ )	$V_{HYS}$	100	160	240	mV	
<b>O4 Type Output Buffer</b>						
Low Output Level	$V_{OL}$			0.4	V	$I_{OL} = 4 \text{ mA}$
High Output Level	$V_{OH}$	<b>VDD33-0.4</b>			V	$I_{OH} = -4 \text{ mA}$
<b>O12 Type Output Buffer</b>						
Low Output Level	$V_{OL}$			0.4	V	$I_{OL} = 12 \text{ mA}$
High Output Level	$V_{OH}$	<b>VDD33-0.4</b>			V	$I_{OH} = -12 \text{ mA}$
<b>OD12 Type Output Buffer</b>						
Low Output Level	$V_{OL}$			0.4	V	$I_{OL} = 12 \text{ mA}$
<b>ICLK Type Input Buffer (XTALI/CLK_IN Input)</b>						
Low Input Level	$V_{IL}$	-0.2		0.35	V	<a href="#">Note 9-3</a>
High Input Level	$V_{IH}$	0.9		1.2	V	
Input Capacitance	$C_{IN}$			2	pF	
<b>I/O-U Type Buffer (See <a href="#">Note 9-4</a>)</b>						
						<a href="#">Note 9-4</a>

**Note 9-3** XTALI can optionally be driven from a 25 MHz singled-ended clock oscillator.

**Note 9-4** Refer to the *Universal Serial Bus Revision 2.0 Specification* for USB DC electrical characteristics.

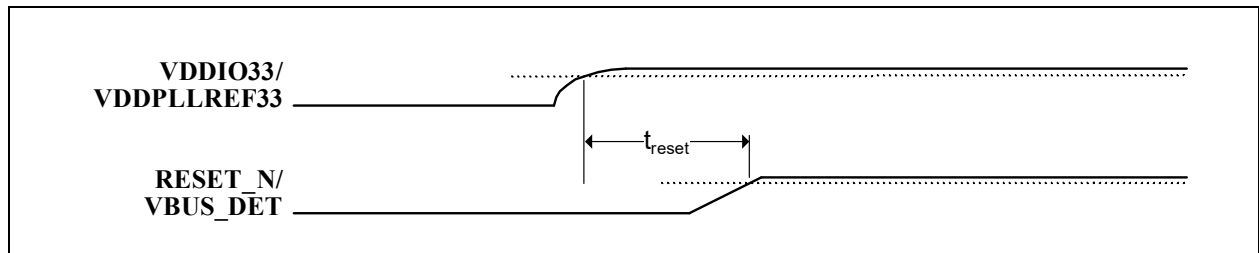
## 9.6 AC Specifications

This section details the various AC timing specifications of the device.

### 9.6.1 POWER SUPPLY AND RESET\_N SEQUENCE TIMING

Figure 9-2 illustrates the recommended power supply sequencing and timing for the device. **RESET\_N** and/or **VBUS\_DET** should rise after or at the same rate as **VDDIO33/VDDPLLREF33**. **VBUS\_DET** and **RESET\_N** do not have any other timing dependencies.

**FIGURE 9-2: POWER SUPPLY AND RESET\_N SEQUENCE TIMING**



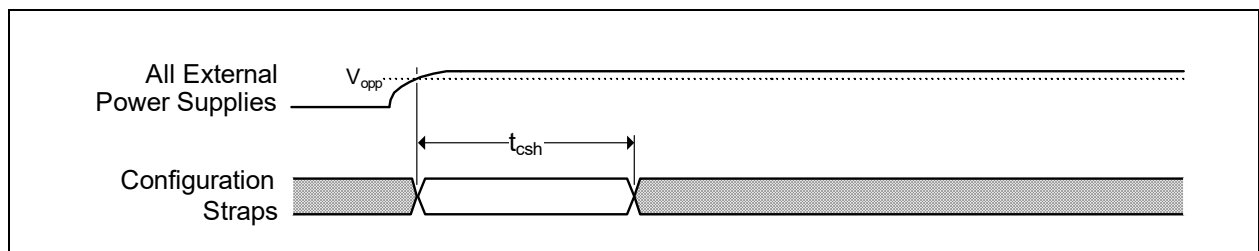
**TABLE 9-4: POWER SUPPLY AND RESET\_N SEQUENCE TIMING**

Symbol	Description	Min	Typ	Max	Units
$t_{\text{reset}}$	VDDIO33/VDDPLLREF33 to RESET_N/VBUS_DET rise time	0			ms

### 9.6.2 POWER-ON AND CONFIGURATION STRAP TIMING

Figure 9-3 illustrates the configuration strap valid timing requirements in relation to power-on, for applications where **RESET\_N** is not used at power-on. In order for valid configuration strap values to be read at power-on, the following timing requirements must be met. The operational levels ( $V_{\text{opp}}$ ) for the external power supplies are detailed in Section 9.2, "Operating Conditions\*\*," on page 26.

**FIGURE 9-3: POWER-ON CONFIGURATION STRAP VALID TIMING**



**TABLE 9-5: POWER-ON CONFIGURATION STRAP LATCHING TIMING**

Symbol	Description	Min	Typ	Max	Units
$t_{\text{csh}}$	Configuration strap hold after external power supplies at operational levels	1			ms

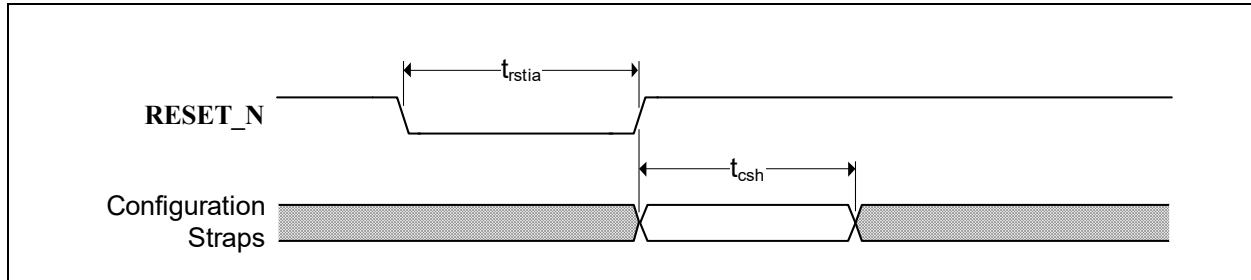
Device configuration straps are also latched as a result of **RESET\_N** assertion. Refer to Section 9.6.3, "Reset and Configuration Strap Timing" for additional details.

# USB4712

## 9.6.3 RESET AND CONFIGURATION STRAP TIMING

Figure 9-4 illustrates the **RESET\_N** pin timing requirements and its relation to the configuration strap pins. Assertion of **RESET\_N** is not a requirement. However, if used, it must be asserted for the minimum period specified. Refer to Section 8.9, "Resets" for additional information on resets. Refer to Section 3.3, "Configuration Straps and Programmable Functions" for additional information on configuration straps.

**FIGURE 9-4: RESET\_N CONFIGURATION STRAP TIMING**



**TABLE 9-6: RESET\_N CONFIGURATION STRAP TIMING**

Symbol	Description	Min	Typ	Max	Units
$t_{rstia}$	<b>RESET_N</b> input assertion time	5			$\mu\text{s}$
$t_{csh}$	Configuration strap pins hold after <b>RESET_N</b> deassertion	1			ms

**Note:** The clock input must be stable prior to **RESET\_N** deassertion.

Configuration strap latching and output drive timings shown assume that the Power-On reset has finished first otherwise the timings in Section 9.6.2, "Power-On and Configuration Strap Timing" apply.

## 9.6.4 USB TIMING

All device USB signals conform to the voltage, power, and timing characteristics/specifications as set forth in the *Universal Serial Bus 2.0 Specification*. Please refer to the *Universal Serial Bus Revision 2.0 Specification*, available at [http://www.usb.org/developers/docs/usb20\\_docs/](http://www.usb.org/developers/docs/usb20_docs/).

## 9.6.5 SMBUS TIMING

All device SMBus signals conform to the voltage, power, and timing characteristics/specifications as set forth in the *System Management Bus Specification*. Please refer to the *System Management Bus Specification*, Version 1.0, available at <http://smbus.org/specs>.

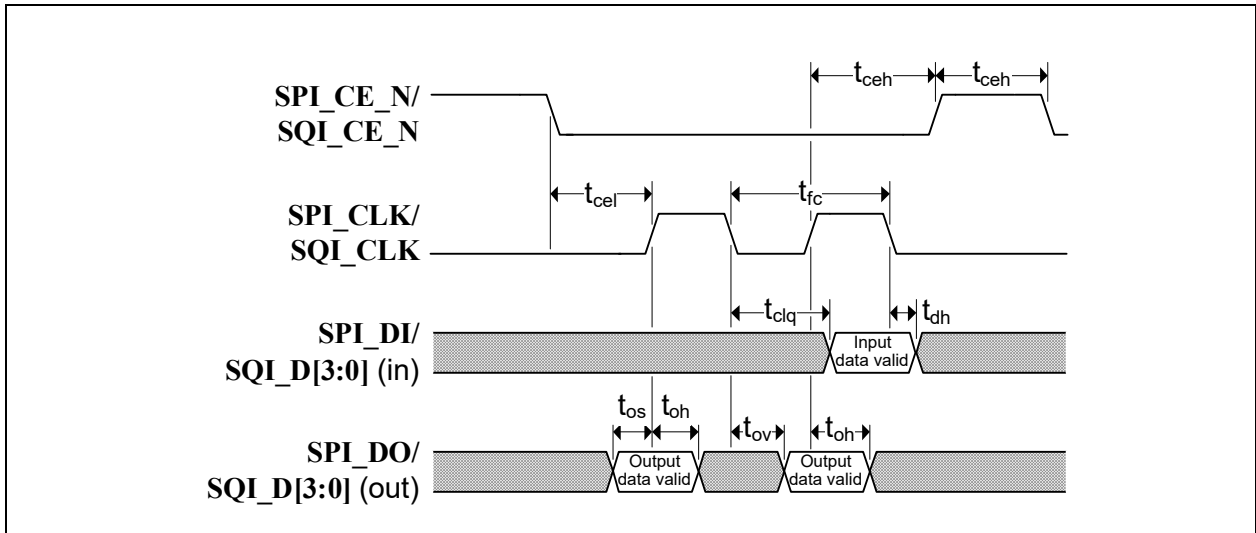
## 9.6.6 I<sup>2</sup>C TIMING

All device I<sup>2</sup>C signals conform to the 400KHz Fast Mode (Fm) voltage, power, and timing characteristics/specifications as set forth in the *I<sup>2</sup>C-Bus Specification*. Please refer to the *I<sup>2</sup>C-Bus Specification*, available at [http://www.nxp.com/documents/user\\_manual/UM10204.pdf](http://www.nxp.com/documents/user_manual/UM10204.pdf).

## 9.6.7 SPI/SQI TIMING

This section specifies the SPI/SQI timing requirements for the device.

**FIGURE 9-5: SPI/SQI TIMING**



**TABLE 9-7: SPI/SQI TIMING (60 MHZ OPERATION)**

Symbol	Description	Min	Typ	Max	Units
$t_{fc}$	Clock frequency			60	MHz
$t_{ceh}$	Chip enable (SPI_CE_N/SQI_CE_N) high time	50			ns
$t_{clq}$	Clock to input data			9	ns
$t_{dh}$	Input data hold time	0			ns
$t_{os}$	Output setup time	5			ns
$t_{oh}$	Output hold time	5			ns
$t_{ov}$	Clock to output valid	4			ns
$t_{cel}$	Chip enable (SPI_CE_N/SQI_CE_N) low to first clock	12			ns
$t_{ceh}$	Last clock to chip enable (SPI_CE_N/SQI_CE_N) high	12			ns

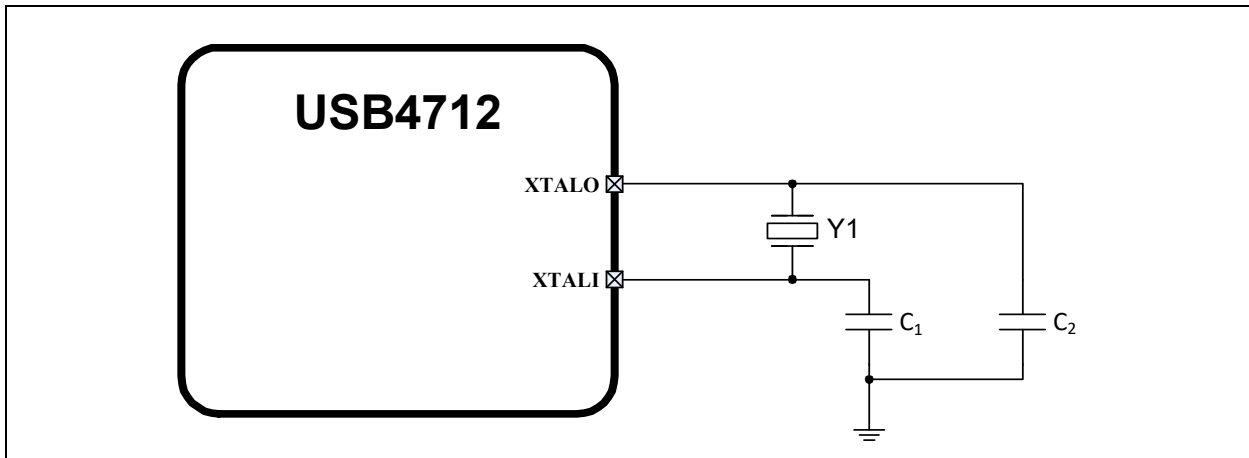
# USB4712

## 9.7 Clock Specifications

The device can accept either a 25MHz crystal or a 25MHz single-ended clock oscillator input. If the single-ended clock oscillator method is implemented, XTALO should be left unconnected and XTALI/CLK\_IN should be driven with a nominal 0-3.3V clock signal. The input clock duty cycle is 40% minimum, 50% typical and 60% maximum.

It is recommended that a crystal utilizing matching parallel load capacitors be used for the crystal input/output signals (XTALI/XTALO). The following circuit design (Figure 9-6) and specifications (Table 9-8) are required to ensure proper operation.

**FIGURE 9-6: 25MHZ CRYSTAL CIRCUIT**



### 9.7.1 CRYSTAL SPECIFICATIONS

It is recommended that a crystal utilizing matching parallel load capacitors be used for the crystal input/output signals (XTALI/XTALO). Refer to Table 9-8 for the recommended crystal specifications.

**TABLE 9-8: CRYSTAL SPECIFICATIONS**

Parameter	Symbol	Min	Nom	Max	Units	Notes
Crystal Cut		AT, typ				
Crystal Oscillation Mode		Fundamental Mode				
Crystal Calibration Mode		Parallel Resonant Mode				
Frequency	$F_{fund}$	-	25.000	-	MHz	
Frequency Tolerance @ 25°C	$F_{tol}$	-	-	±50	PPM	
Frequency Stability Over Temp	$F_{temp}$	-	-	±50	PPM	
Frequency Deviation Over Time	$F_{age}$	-	±3 to 5	-	PPM	Note 9-5
Total Allowable PPM Budget		-	-	±100	PPM	
Shunt Capacitance	$C_O$	-	7 typ	-	pF	
Load Capacitance	$C_L$	-	20 typ	-	pF	
Drive Level	$P_W$	100	-	-	uW	
Equivalent Series Resistance	$R_1$	-	-	50	Ω	
Operating Temperature Range		-40	-	+85	°C	
XTALI/CLK_IN Pin Capacitance		-	3 typ	-	pF	Note 9-6
XTALO Pin Capacitance		-	3 typ	-	pF	Note 9-6

**Note 9-5** Frequency Deviation Over Time is also referred to as Aging.



**Note 9-6** This number includes the pad, the bond wire and the lead frame. PCB capacitance is not included in this value. The **XTALI/CLK\_IN** pin, **XTALO** pin and PCB capacitance values are required to accurately calculate the value of the two external load capacitors. These two external load capacitors determine the accuracy of the 25.000 MHz frequency.

## 9.7.2 EXTERNAL REFERENCE CLOCK (CLK\_IN)

When using an external reference clock, the following input clock specifications are suggested:

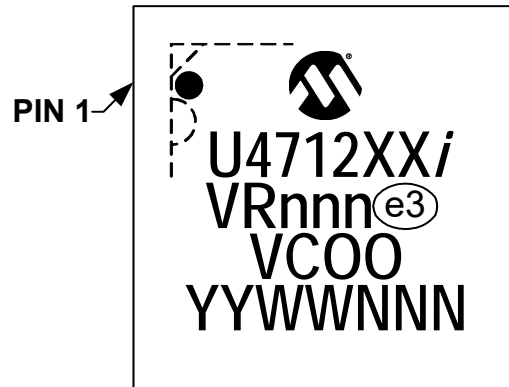
- 25 MHz
- 50% duty cycle  $\pm 10\%$ ,  $\pm 100$  ppm
- Jitter < 100 ps RMS

# USB4712

## 10.0 PACKAGE INFORMATION

**Note:** Package offerings are currently under review and are subject to change.

40-VQFN (5x5 mm)



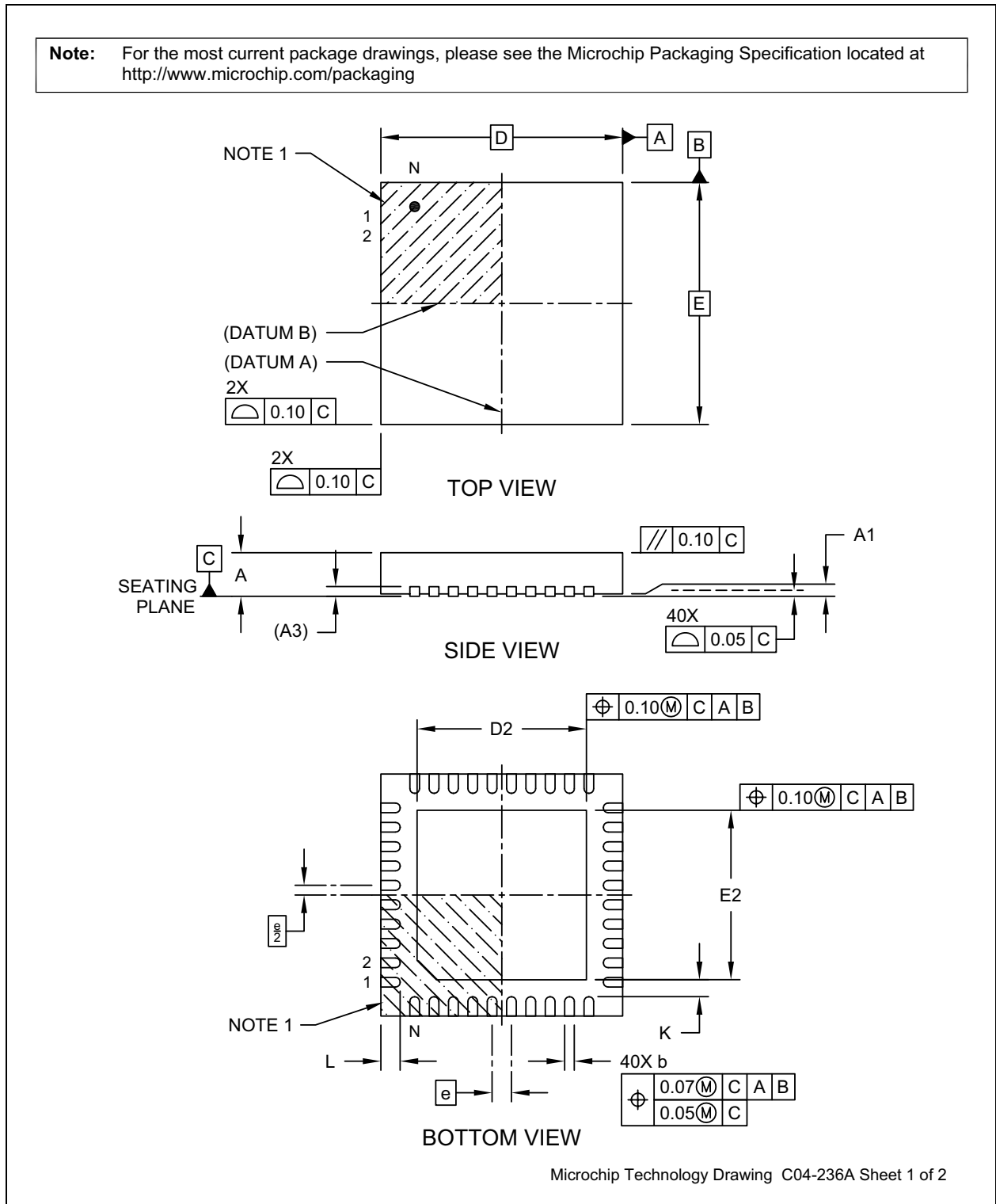
<b>Legend:</b>	XX	FlexConnect special feature designator (if applicable)
	<i>i</i>	Temperature range designator
	V	Automotive
	R	Product revision
	nnn	Internal code
	e3	Pb-free JEDEC <sup>®</sup> designator for Matte Tin (Sn)
	V	Plant of assembly
	COO	Country of origin
	YY	Year code (last two digits of calendar year)
	WW	Week code (week of January 1 is week '01')

**Note:** In the event the full Microchip part number cannot be marked on one line, it will be carried over to the next line, thus limiting the number of available characters for customer-specific information.

\* Standard device marking consists of Microchip part number, year code, week code and traceability code. For device marking beyond this, certain price adders apply. Please check with your Microchip Sales Office. For QTP devices, any special marking adders are included in QTP price.

## 10.1 40-VQFN

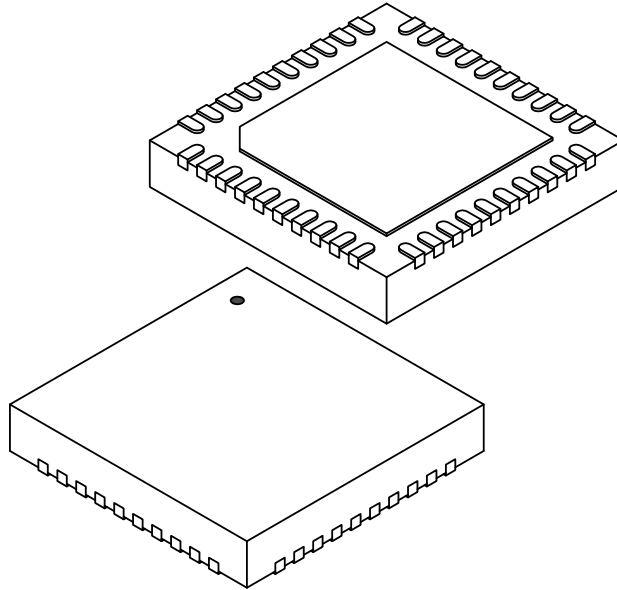
**FIGURE 10-1: 40-VQFN PACKAGE (DRAWING)**



# USB4712

**FIGURE 10-1: 40-VQFN PACKAGE (DRAWING) (CONTINUED)**

**Note:** For the most current package drawings, please see the Microchip Packaging Specification located at <http://www.microchip.com/packaging>



Dimension Limits	Units	MILLIMETERS		
		MIN	NOM	MAX
Number of Terminals	N	40		
Pitch	e	0.40 BSC		
Overall Height	A	0.80	0.90	1.00
Standoff	A1	0.00	0.02	0.05
Terminal Thickness	A3	0.200 REF		
Overall Length	D	5.00 BSC		
Exposed Pad Length	D2	3.40	3.50	3.60
Overall Width	E	5.00 BSC		
Exposed Pad Width	E2	3.40	3.50	3.60
Terminal Width	b	0.15	0.20	0.25
Terminal Length	L	0.35	0.40	0.45
Terminal-to-Exposed-Pad	K	0.20	-	-

**Notes:**

1. Pin 1 visual index feature may vary, but must be located within the hatched area.
2. Package is saw singulated
3. Dimensioning and tolerancing per ASME Y14.5M

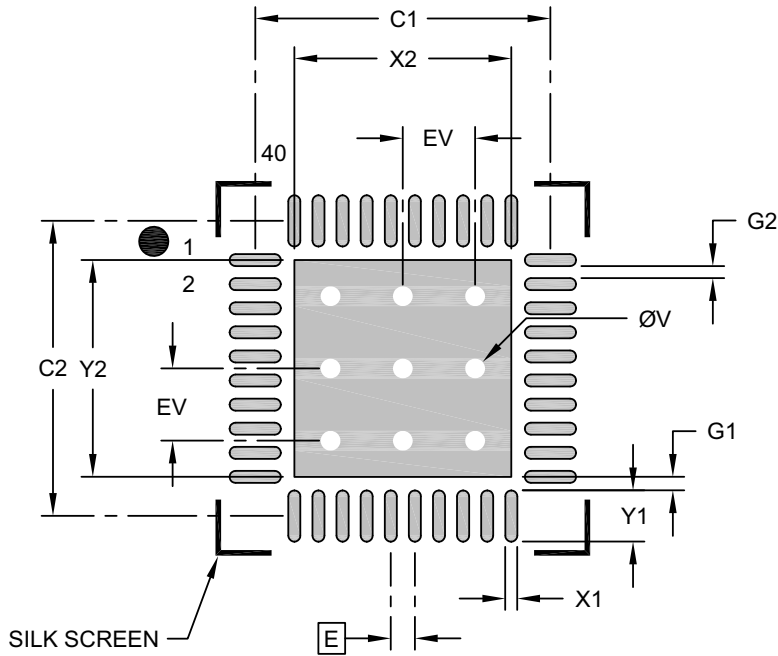
BSC: Basic Dimension. Theoretically exact value shown without tolerances.

REF: Reference Dimension, usually without tolerance, for information purposes only.

Microchip Technology Drawing C04-236A Sheet 2 of 2

**FIGURE 10-2: 40-VQFN PACKAGE (LAND PATTERN)**

**Note:** For the most current package drawings, please see the Microchip Packaging Specification located at <http://www.microchip.com/packaging>



**RECOMMENDED LAND PATTERN**

Dimension Limits	Units	MILLIMETERS		
		MIN	NOM	MAX
Contact Pitch	E	0.40 BSC		
Optional Center Pad Width	X2			3.60
Optional Center Pad Length	Y2			3.60
Contact Pad Spacing	C1		4.90	
Contact Pad Spacing	C2		4.90	
Contact Pad Width (X40)	X1			0.20
Contact Pad Length (X40)	Y1			0.85
Contact Pad to Center Pad (X40)	G1	0.20		
Contact Pad to Contact Pad (X36)	G1	0.20		
Thermal Via Diameter	V		0.33	
Thermal Via Pitch	EV		1.20	

**Notes:**

1. Dimensioning and tolerancing per ASME Y14.5M  
BSC: Basic Dimension. Theoretically exact value shown without tolerances.
2. For best soldering results, thermal vias, if used, should be filled or tented to avoid solder loss during reflow process

Microchip Technology Drawing C04-236A

# USB4712

## APPENDIX A: DATA SHEET REVISION HISTORY

TABLE A-1: REVISION HISTORY

Revision Level & Date	Section/Figure/Entry	Correction
DS00002774G (06-01-21)	Figure 3-1, "USB4712 Pin Assignments", Table 3-1, "USB4712 Pin Assignments"	Added FLEX_CMD pin function to GPIO11 pin and note regarding availability.
	Table 3-2, "Pin Descriptions"	<ul style="list-style-type: none"> <li>Added FLEX_CMD pin definition to Miscellaneous section of table.</li> <li>Added notes to SMB1_CLK, SMB1_DAT, SMB2_CLK, SMB2_DAT, UART_TX, UART_RX, GPIO6, GPIO11 pin descriptions regarding availability in USB4712PF.</li> </ul>
DS00002774F (08-17-20)	Section 2.1, "General Description"	Note added: "Auto-FlexConnect requires Battery Charging v1.2 to always be enabled to function. BC1.2 on USB4712PF may be optionally enabled or disabled without any negative effect."
	Table 3.2, "Pin Descriptions"	Description modified for Test 1, Test 2 and Test 3.
	Section 3.3.2, "Battery Charging Configuration (CFG_BC_EN)"	Note added: "BC1.2 must be enabled for Auto-FlexConnect feature to operate. USB4712PF may optionally leave BC1.2 enabled or disabled with no negative effect to standard (non-Automatic) FlexConnect operation."
	Section 8.2, "Auto-FlexConnect"	Note added: "The Auto-FlexConnect feature requires that USB Battery Charging (BC1.2) be enabled."
	Section 9.2, "Operating Conditions**"	Supply Voltage Rise Time modified.
	Table 9-3, "I/O DC Electrical Characteristics"	<ul style="list-style-type: none"> <li>MAX values added for I Type Input Buffer and IS Type Input Buffer</li> <li>The following note removed: "0.42V for interfaces using open drain with pull-ups to voltages up to 2.1V, 0.34V for interfaces using open drain with pull-ups to voltages greater than 2.1V"</li> </ul>
DS00002774E (06-01-20)	Table 2-1, "Family Feature Matrix"	Hub Feature Controller for USB4712LS modified.
	Figure 5-1, "Hub Mode Flowchart"	Diagram updated.

**TABLE A-1: REVISION HISTORY (CONTINUED)**

Revision Level & Date	Section/Figure/Entry	Correction
DS00002774D (04-15-20)	All	Updated document to include family of new SKUs: USB4712PF and USB4712LS.
	Cover	<ul style="list-style-type: none"> <li>Updated title to indicate family of devices</li> <li>Added additional bullets under Auto-FlexConnect to clarify differences between SKUs.</li> </ul>
	<a href="#">Section 2.1, General Description</a>	Updated to include information on the differences between SKUs
	<a href="#">Section 10.0, Package Information</a>	Updated top marking information to include the differences between SKUs.
	<a href="#">Product Identification System</a>	Updated to include ordering information for additional SKUs.
DS00002774C (07-30-19)	<a href="#">Package Information on page 34</a>	Data Sheet Package Top Marking changed from "USB4712" to "U4712" to match actual production marking.
	<a href="#">Table 3-2, "Pin Descriptions"</a>	Description for SMBus 2 Clock and SMBus 2 Data changed to SMBus 2 SLAVE.
DS00002774B (01-28-19)	Public Release	
DS00002774A (08-07-18)	All	Initial Release

# USB4712

---

## THE MICROCHIP WEB SITE

Microchip provides online support via our WWW site at [www.microchip.com](http://www.microchip.com). This web site is used as a means to make files and information easily available to customers. Accessible by using your favorite Internet browser, the web site contains the following information:

- **Product Support** – Data sheets and errata, application notes and sample programs, design resources, user's guides and hardware support documents, latest software releases and archived software
- **General Technical Support** – Frequently Asked Questions (FAQ), technical support requests, online discussion groups, Microchip consultant program member listing
- **Business of Microchip** – Product selector and ordering guides, latest Microchip press releases, listing of seminars and events, listings of Microchip sales offices, distributors and factory representatives

## CUSTOMER CHANGE NOTIFICATION SERVICE

Microchip's customer notification service helps keep customers current on Microchip products. Subscribers will receive e-mail notification whenever there are changes, updates, revisions or errata related to a specified product family or development tool of interest.

To register, access the Microchip web site at [www.microchip.com](http://www.microchip.com). Under "Support", click on "Customer Change Notification" and follow the registration instructions.

## CUSTOMER SUPPORT

Users of Microchip products can receive assistance through several channels:

- Distributor or Representative
- Local Sales Office
- Field Application Engineer (FAE)
- Technical Support

Customers should contact their distributor, representative or field application engineer (FAE) for support. Local sales offices are also available to help customers. A listing of sales offices and locations is included in the back of this document.

**Technical support is available through the web site at: <http://microchip.com/support>**



## PRODUCT IDENTIFICATION SYSTEM

To order or obtain information, e.g., on pricing or delivery, refer to the factory or the listed sales office.

<u>PART NO.</u>	[X] <sup>(1)</sup>	-	X	/	XXX	XXX
Device	Tape and Reel Option		Temperature Range		Package	Automotive Code
<p><b>Device:</b> USB4712 = 1 Downstream Port, 1 Upstream Port            USB4712LS = 1 Downstream Port, 1 Upstream Port            USB4712PF = 1 Downstream Port, 1 Upstream Port</p> <p><b>Tape and Reel Option:</b> Blank = Standard packaging (tray)            T = Tape and Reel (<a href="#">Note 1</a>)</p> <p><b>Temperature Range:</b> I = -40°C to +85°C</p> <p><b>Package:</b> PNX = 40-pin VQFN            TBD = 40-pin VQFN (Wettable Flanks)</p> <p><b>Automotive Code:</b> Vxx = 3 character code with "V" prefix, specifying automotive product.</p>						
<p><b>Examples:</b></p> <p>a) USB4712-I/PNXVAA            Tray, -40°C to+85°C, 40-pin VQFN</p> <p>b) USB4712T-I/PNXVAA            Tape &amp; reel, -40°C to+85°C, 40-pin VQFN</p> <p>c) USB4712LS-I/PNXVAA            Tray, -40°C to+85°C, 40-pin VQFN</p> <p>d) USB4712PFT-I/PNXVAA            Tape &amp; reel, -40°C to+85°C, 40-pin VQFN</p> <p><b>Note 1:</b> Tape and Reel identifier only appears in the catalog part number description. This identifier is used for ordering purposes and is not printed on the device package. Check with your Microchip Sales Office for package availability with the Tape and Reel option.</p>						

# USB4712

---

## Note the following details of the code protection feature on Microchip devices:

- Microchip products meet the specifications contained in their particular Microchip Data Sheet.
- Microchip believes that its family of products is secure when used in the intended manner and under normal conditions.
- There are dishonest and possibly illegal methods being used in attempts to breach the code protection features of the Microchip devices. We believe that these methods require using the Microchip products in a manner outside the operating specifications contained in Microchip's Data Sheets. Attempts to breach these code protection features, most likely, cannot be accomplished without violating Microchip's intellectual property rights.
- Microchip is willing to work with any customer who is concerned about the integrity of its code.
- Neither Microchip nor any other semiconductor manufacturer can guarantee the security of its code. Code protection does not mean that we are guaranteeing the product is "unbreakable." Code protection is constantly evolving. We at Microchip are committed to continuously improving the code protection features of our products. Attempts to break Microchip's code protection feature may be a violation of the Digital Millennium Copyright Act. If such acts allow unauthorized access to your software or other copyrighted work, you may have a right to sue for relief under that Act.

---

Information contained in this publication is provided for the sole purpose of designing with and using Microchip products. Information regarding device applications and the like is provided only for your convenience and may be superseded by updates. It is your responsibility to ensure that your application meets with your specifications.

THIS INFORMATION IS PROVIDED BY MICROCHIP "AS IS". MICROCHIP MAKES NO REPRESENTATIONS OR WARRANTIES OF ANY KIND WHETHER EXPRESS OR IMPLIED, WRITTEN OR ORAL, STATUTORY OR OTHERWISE, RELATED TO THE INFORMATION INCLUDING BUT NOT LIMITED TO ANY IMPLIED WARRANTIES OF NON-INFRINGEMENT, MERCHANTABILITY, AND FITNESS FOR A PARTICULAR PURPOSE OR WARRANTIES RELATED TO ITS CONDITION, QUALITY, OR PERFORMANCE.

IN NO EVENT WILL MICROCHIP BE LIABLE FOR ANY INDIRECT, SPECIAL, PUNITIVE, INCIDENTAL OR CONSEQUENTIAL LOSS, DAMAGE, COST OR EXPENSE OF ANY KIND WHATSOEVER RELATED TO THE INFORMATION OR ITS USE, HOWEVER CAUSED, EVEN IF MICROCHIP HAS BEEN ADVISED OF THE POSSIBILITY OR THE DAMAGES ARE FORESEEABLE. TO THE FULLEST EXTENT ALLOWED BY LAW, MICROCHIP'S TOTAL LIABILITY ON ALL CLAIMS IN ANY WAY RELATED TO THE INFORMATION OR ITS USE WILL NOT EXCEED THE AMOUNT OF FEES, IF ANY, THAT YOU HAVE PAID DIRECTLY TO MICROCHIP FOR THE INFORMATION. Use of Microchip devices in life support and/or safety applications is entirely at the buyer's risk, and the buyer agrees to defend, indemnify and hold harmless Microchip from any and all damages, claims, suits, or expenses resulting from such use. No licenses are conveyed, implicitly or otherwise, under any Microchip intellectual property rights unless otherwise stated.

## Trademarks

The Microchip name and logo, the Microchip logo, Adaptec, AnyRate, AVR, AVR logo, AVR Freaks, BesTime, BitCloud, chipKIT, chipKIT logo, CryptoMemory, CryptoRF, dsPIC, FlashFlex, flexPWR, HELDO, IGLOO, JukeBlox, KeeLoq, Klear, LANCheck, LinkMD, maXStylus, maXTouch, MediaLB, megaAVR, Microsemi, Microsemi logo, MOST, MOST logo, MPLAB, OptoLyzer, PackTime, PIC, picoPower, PICSTART, PIC32 logo, PolarFire, Prochip Designer, QTouch, SAM-BA, SenGenuity, SpyNIC, SST, SST Logo, SuperFlash, Symmetricom, SyncServer, Tachyon, TimeSource, tinyAVR, UNI/O, Vectron, and XMEGA are registered trademarks of Microchip Technology Incorporated in the U.S.A. and other countries.

AgileSwitch, APT, ClockWorks, The Embedded Control Solutions Company, EtherSynch, FlashTec, Hyper Speed Control, HyperLight Load, IntelliMOS, Libero, motorBench, mTouch, Powermite 3, Precision Edge, ProASIC, ProASIC Plus, ProASIC Plus logo, Quiet-Wire, SmartFusion, SyncWorld, Temux, TimeCesium, TimeHub, TimePictra, TimeProvider, WinPath, and ZL are registered trademarks of Microchip Technology Incorporated in the U.S.A.

Adjacent Key Suppression, AKS, Analog-for-the-Digital Age, Any Capacitor, AnyIn, AnyOut, Augmented Switching, BlueSky, BodyCom, CodeGuard, CryptoAuthentication, CryptoAutomotive, CryptoCompanion, CryptoController, dsPICDEM, dsPICDEM.net, Dynamic Average Matching, DAM, ECAN, Espresso T1S, EtherGREEN, IdealBridge, In-Circuit Serial Programming, ICSP, INICnet, Intelligent Paralleling, Inter-Chip Connectivity, JitterBlocker, maxCrypto, maxView, memBrain, Mindi, MiWi, MPASM, MPF, MPLAB Certified logo, MPLIB, MPLINK, MultiTRAK, NetDetach, Omniscient Code Generation, PICDEM, PICDEM.net, PICkit, PICtail, PowerSmart, PureSilicon, QMatrix, REAL ICE, Ripple Blocker, RTAX, RTG4, SAM-ICE, Serial Quad I/O, simpleMAP, SimpliPHY, SmartBuffer, SMART-I.S., storClad, SQI, SuperSwitcher, SuperSwitcher II, Switchtec, SynchroPHY, Total Endurance, TSHARC, USBCheck, VariSense, VectorBlox, VeriPHY, ViewSpan, WiperLock, XpressConnect, and ZENA are trademarks of Microchip Technology Incorporated in the U.S.A. and other countries.

SQTP is a service mark of Microchip Technology Incorporated in the U.S.A.

The Adaptec logo, Frequency on Demand, Silicon Storage Technology, and Symmcom are registered trademarks of Microchip Technology Inc. in other countries.

GestIC is a registered trademark of Microchip Technology Germany II GmbH & Co. KG, a subsidiary of Microchip Technology Inc., in other countries.

All other trademarks mentioned herein are property of their respective companies.

© 2018-2021, Microchip Technology Incorporated, All Rights Reserved.

ISBN: 9781522483182

For information regarding Microchip's Quality Management Systems, please visit [www.microchip.com/quality](http://www.microchip.com/quality).



## Worldwide Sales and Service

### AMERICAS

**Corporate Office**  
2355 West Chandler Blvd.  
Chandler, AZ 85224-6199  
Tel: 480-792-7200  
Fax: 480-792-7277  
Technical Support:  
<http://www.microchip.com/support>  
Web Address:  
[www.microchip.com](http://www.microchip.com)

#### Atlanta

Duluth, GA  
Tel: 678-957-9614  
Fax: 678-957-1455

#### Austin, TX

Tel: 512-257-3370

#### Boston

Westborough, MA  
Tel: 774-760-0087  
Fax: 774-760-0088

#### Chicago

Itasca, IL  
Tel: 630-285-0071  
Fax: 630-285-0075

#### Dallas

Addison, TX  
Tel: 972-818-7423  
Fax: 972-818-2924

#### Detroit

Novi, MI  
Tel: 248-848-4000

#### Houston, TX

Tel: 281-894-5983

#### Indianapolis

Noblesville, IN  
Tel: 317-773-8323  
Fax: 317-773-5453  
Tel: 317-536-2380

#### Los Angeles

Mission Viejo, CA  
Tel: 949-462-9523  
Fax: 949-462-9608  
Tel: 951-273-7800

#### Raleigh, NC

Tel: 919-844-7510

#### New York, NY

Tel: 631-435-6000

#### San Jose, CA

Tel: 408-735-9110  
Tel: 408-436-4270

#### Canada - Toronto

Tel: 905-695-1980  
Fax: 905-695-2078

### ASIA/PACIFIC

**Australia - Sydney**  
Tel: 61-2-9868-6733

**China - Beijing**  
Tel: 86-10-8569-7000

**China - Chengdu**  
Tel: 86-28-8665-5511

**China - Chongqing**  
Tel: 86-23-8980-9588

**China - Dongguan**  
Tel: 86-769-8702-9880

**China - Guangzhou**  
Tel: 86-20-8755-8029

**China - Hangzhou**  
Tel: 86-571-8792-8115

**China - Hong Kong SAR**  
Tel: 852-2943-5100

**China - Nanjing**  
Tel: 86-25-8473-2460

**China - Qingdao**  
Tel: 86-532-8502-7355

**China - Shanghai**  
Tel: 86-21-3326-8000

**China - Shenyang**  
Tel: 86-24-2334-2829

**China - Shenzhen**  
Tel: 86-755-8864-2200

**China - Suzhou**  
Tel: 86-186-6233-1526

**China - Wuhan**  
Tel: 86-27-5980-5300

**China - Xian**  
Tel: 86-29-8833-7252

**China - Xiamen**  
Tel: 86-592-2388138

**China - Zhuhai**  
Tel: 86-756-3210040

### ASIA/PACIFIC

**India - Bangalore**  
Tel: 91-80-3090-4444

**India - New Delhi**  
Tel: 91-11-4160-8631

**India - Pune**  
Tel: 91-20-4121-0141

**Japan - Osaka**  
Tel: 81-6-6152-7160

**Japan - Tokyo**  
Tel: 81-3-6880-3770

**Korea - Daegu**  
Tel: 82-53-744-4301

**Korea - Seoul**  
Tel: 82-2-554-7200

**Malaysia - Kuala Lumpur**  
Tel: 60-3-7651-7906

**Malaysia - Penang**  
Tel: 60-4-227-8870

**Philippines - Manila**  
Tel: 63-2-634-9065

**Singapore**  
Tel: 65-6334-8870

**Taiwan - Hsin Chu**  
Tel: 886-3-577-8366

**Taiwan - Kaohsiung**  
Tel: 886-7-213-7830

**Taiwan - Taipei**  
Tel: 886-2-2508-8600

**Thailand - Bangkok**  
Tel: 66-2-694-1351

**Vietnam - Ho Chi Minh**  
Tel: 84-28-5448-2100

### EUROPE

**Austria - Wels**  
Tel: 43-7242-2244-39  
Fax: 43-7242-2244-393

**Denmark - Copenhagen**  
Tel: 45-4485-5910  
Fax: 45-4485-2829

**Finland - Espoo**  
Tel: 358-9-4520-820

**France - Paris**  
Tel: 33-1-69-53-63-20  
Fax: 33-1-69-30-90-79

**Germany - Garching**  
Tel: 49-8931-9700

**Germany - Haan**  
Tel: 49-2129-3766400

**Germany - Heilbronn**  
Tel: 49-7131-72400

**Germany - Karlsruhe**  
Tel: 49-721-625370

**Germany - Munich**  
Tel: 49-89-627-144-0  
Fax: 49-89-627-144-44

**Germany - Rosenheim**  
Tel: 49-8031-354-560

**Israel - Ra'anana**  
Tel: 972-9-744-7705

**Italy - Milan**  
Tel: 39-0331-742611  
Fax: 39-0331-466781

**Italy - Padova**  
Tel: 39-049-7625286

**Netherlands - Drunen**  
Tel: 31-416-690399  
Fax: 31-416-690340

**Norway - Trondheim**  
Tel: 47-7288-4388

**Poland - Warsaw**  
Tel: 48-22-3325737

**Romania - Bucharest**  
Tel: 40-21-407-87-50

**Spain - Madrid**  
Tel: 34-91-708-08-90  
Fax: 34-91-708-08-91

**Sweden - Gothenberg**  
Tel: 46-31-704-60-40

**Sweden - Stockholm**  
Tel: 46-8-5090-4654

**UK - Wokingham**  
Tel: 44-118-921-5800  
Fax: 44-118-921-5820