
UT163/UT165/UT190 USB Flash Disk Utility

User's Manual

Rev. 3.2.4.0

JUNE. 12, 2008



<http://www.afatech.com>

All rights strictly reserved. Any portion of this paper shall not be reproduced, copied, or translated to any other forms without permission from Afa Technologies Inc.



Contents

- 1. Introduction.....2**
 - 1.1 System Requirements2
 - 1.2 Multilingual Support2
 - 1.3 Disk Partitioning.....2
 - 1.4 Secret & Compress:.....2
 - 1.5 Note3
- 2. Icon Descriptions of the UFD Utility.....4**
 - 2.1 Partition Manager5
 - 2.2 Boot Manager5
 - 2.3 Security Manager5
 - 2.4 Autorun Manager5
 - 2.5 Flash Mail Manager.....5
 - 2.6 PC Lock Manager.....5
 - 2.7 Bookmark Manager.....5
 - 2.8 Security Folder5
 - 2.9 Remark5
- 3. UFD Utility Operation manual6**
 - 3.1 Introduction of Partition Manager6
 - 3.2 Instructions of Boot Manager8
 - 3.2.1 Configure Boot Disk.....8
 - 3.2.2 Making a Boot Disk (for Windows 98)9
 - 3.2.3 Making a Boot Disk (for Windows ME / 2000 / XP / Vista)11
 - 3.3 Instructions of Security Manager:13
 - 3.3.1 Login to Security Area.....13
 - 3.3.2 Logout from Security Area14
 - 3.4 Instructions of Autorun Manager.....15
 - 3.4.1 Start from Source File Preparation15
 - 3.4.2 Start from Existing Source File19
 - 3.4.3 Restore To Default Setting.....22
 - 3.5 Instructions of Flash Mail Manager.....26
 - 3.5.1 First Time Set Up.....26
 - 3.5.2 Flash Mail Manager Operation Flow28
 - 3.6 Instructions of PC Lock Manager.....30
 - 3.7 Instructions of Bookmark Manager32
 - 3.7.1 Import My Favorites.....32
 - 3.7.2 Select PC Bookmark or UFD Bookmark.....32
 - 3.7.3 How to use PC Bookmark or UFD Bookmark33
 - 3.8 Introduction of Security Folder34
 - 3.8.1 Secret area data access.....35
 - 3.8.2 Change Secret area password36
- 4. Copyright Notice37**



1. Introduction

1.1 System Requirements

- Windows 98 / ME / 2000 / XP / Vista
- USB 2.0 Host, USB HUB (Optional)

1.2 Multilingual Support

- Simplified Chinese, Traditional Chinese, Portuguese, Japanese and English

1.3 Disk Partitioning

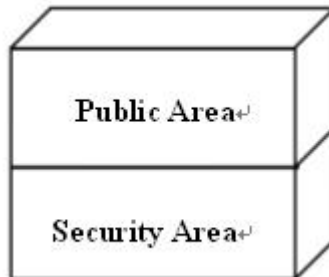
UFD Utility can be used to partition UFD into 2 kinds of partitioning types. Please read instructions below before partitioning.

- Public Area

Default setting is no security restrictions. User can use entire memory area as public area.

- Security Area

All data in Security Area is protected by password.

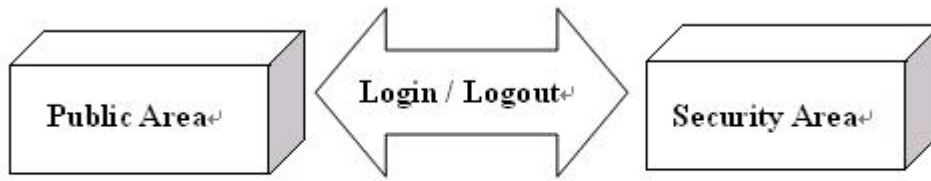


- Public Area + Security Area

UFD can be partitioned into 2 areas, Public area and Security area. All data stored in Security area is protected by password. However, the Public area has no restrictions in access.

1.4 Secret & Compress:

UFD Utility Secret Zip tool is save secret Zip file with special extension.



Public Area + Security Area

1.5 Note

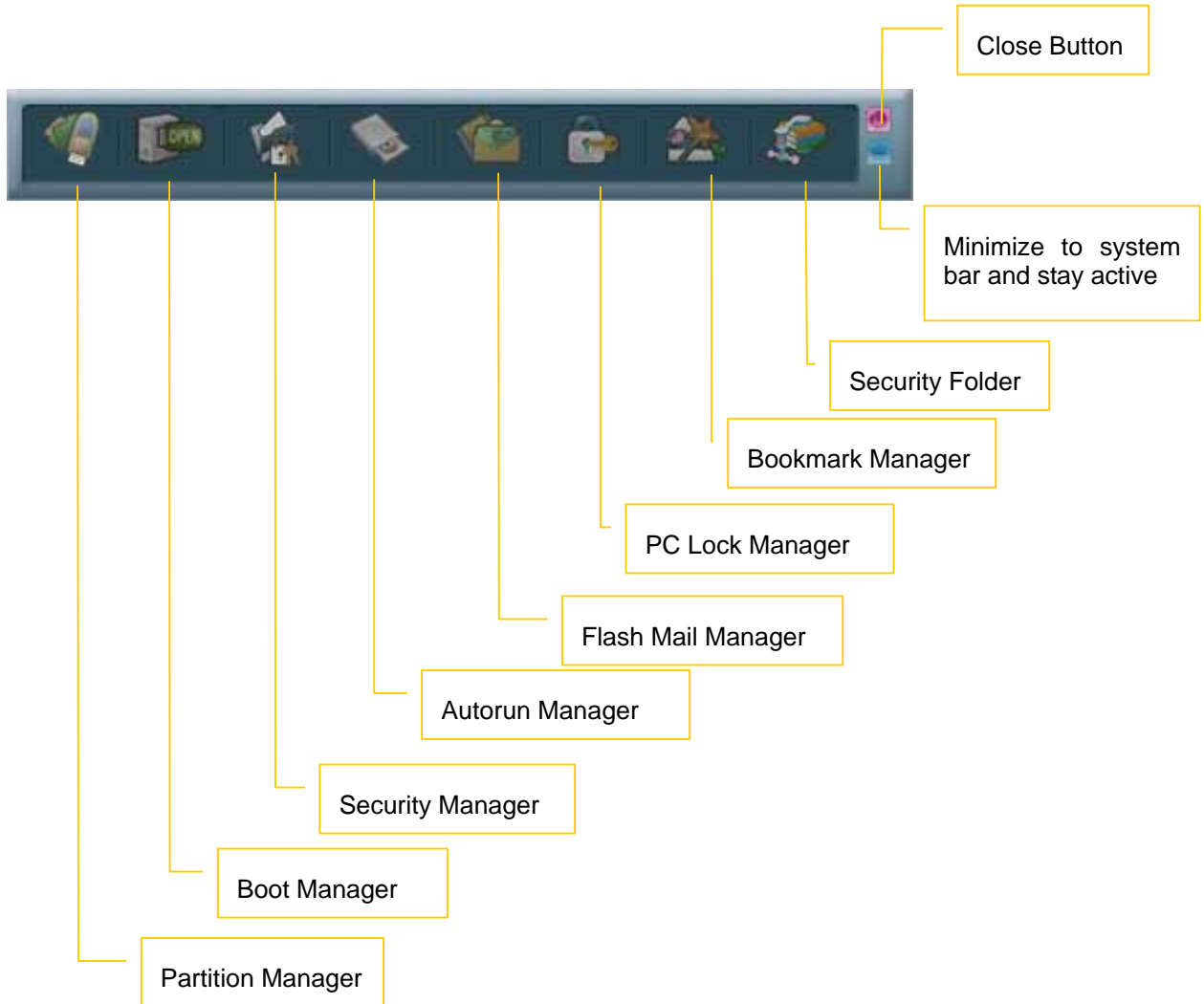
- UFD, used in the article, stands for USB FLASH DISK
- Please be aware that some utility functions will format the UFD after executing the UFDUtility.exe. Please backup all data in the UFD before executing the program.



2. Icon Descriptions of the UFD Utility



The descriptions for each icon after plug in UFD and execute UFDUtility.exe was list below.





2.1 Partition Manager

The icon is able to use to partition UFD into “public area” only or “public area + security area”. It supports to modify disk label and password for security area.

2.2 Boot Manager

The icon is able to make UFD as a boot disk as USB-ZIP or USB-HDD.

2.3 Security Manager

The icon is able to Login security area after correct password key in and logout after data access for protection.

2.4 Autorun Manager

Create virtual CDROM partition with auto-run feature embedded on top of “Partition Manager” made 1 or 2 partition areas. This tool also supports ISO image file making and one single “Removable Disk” default setting call back function.

2.5 Flash Mail Manager

The icon is able to copy mail, address book and accounts in the Outlook Express to the UFD. It can use to read mail at any Windows Outlook Express platform.

2.6 PC Lock Manager

Lock PC to prevent un-wanted operation during setting time after un-plug UFD. User can define PC lock time and text/picture display they prefer during PC lock time.

2.7 Bookmark Manager

Copy my favorites in the Internet Explorer to the UFD. It can be used to visit favorite website on any Windows Internet Explorer platform.

2.8 Security Folder

Put the file you want to secret or compress to the vfprintf folder under public area. The tool will create a special vfprintf.vfo Zip file.

2.9 Remark

Whenever “Partition Manager”, “Boot Manager” and “Autorun Manager” executed, the “UFD Utility.exe” will be duplicated to the Public area for user convenience.



3. UFD Utility Operation manual

3.1 Introduction of Partition Manager

- Click “Partition Manager” on the UFD Utility bar.



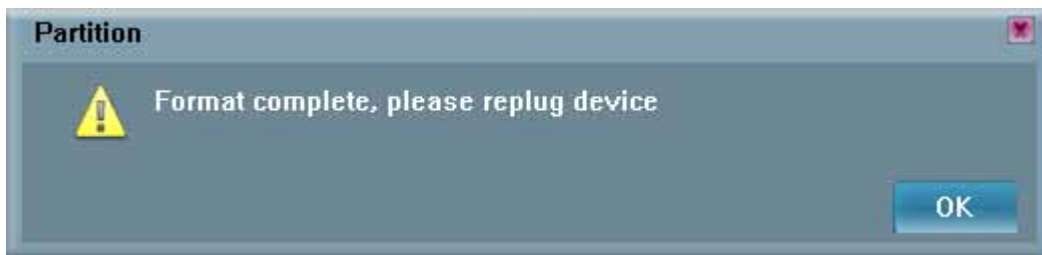
- “Partition manager” window will pop up right after click as below.



- Use keyboard (, , ,) or mouse to adjust public or security area capacity. The minimum capacity for public area is 5MB.
- Enter new password (maximum is 8 characters)
- Enter the password hint to remind the user in case forgetting password
- User may enter or modify the disk label for each area (maximum is 15 characters)
- Execution by pressing “Start”



- A warning message prompts user to backup all the data before partition.
- Press "OK".



- Showing format complete message when finished. Re-plug device is necessary after finish.



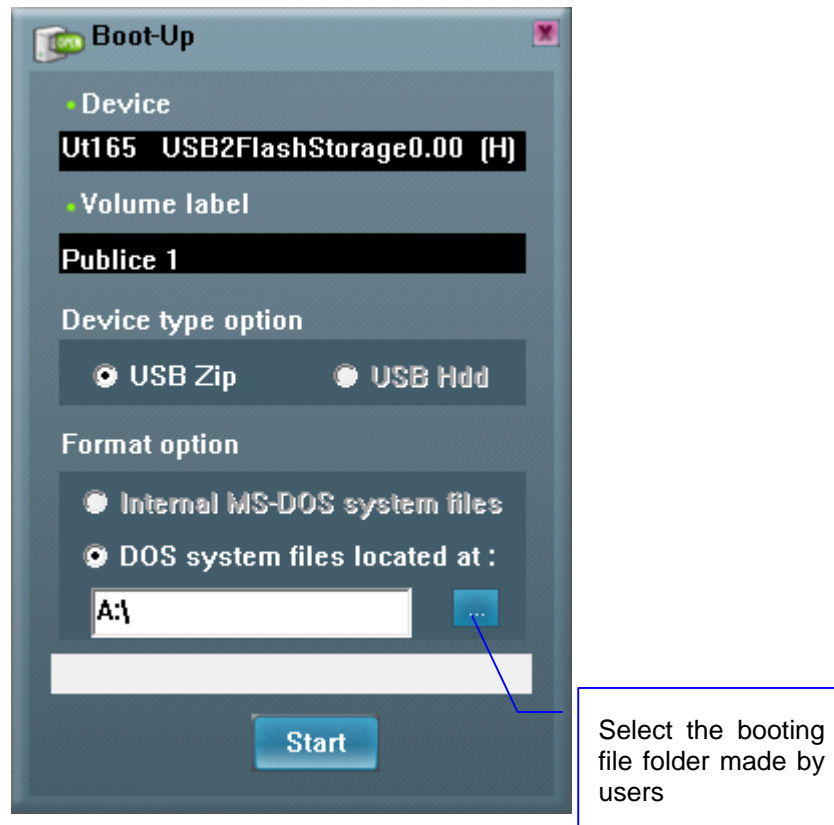
3.2 Instructions of Boot Manager

3.2.1 Configure Boot Disk

- Click “Boot Manager” on the UFD Utility bar



- “Boot-Up” window will pop up right after click as below.
- The disk label can be modified through “Boot-Up” setting window.



- May enter or modify the disk label (maximum is 11 characters)
- Select booting mode, USB Zip or USB HDD. Please select the same mode in the BIOS first boot device.
- Notice: USB HDD booting support on Windows 98 ONLY.
- User can modify the disk label only if press “Start”.

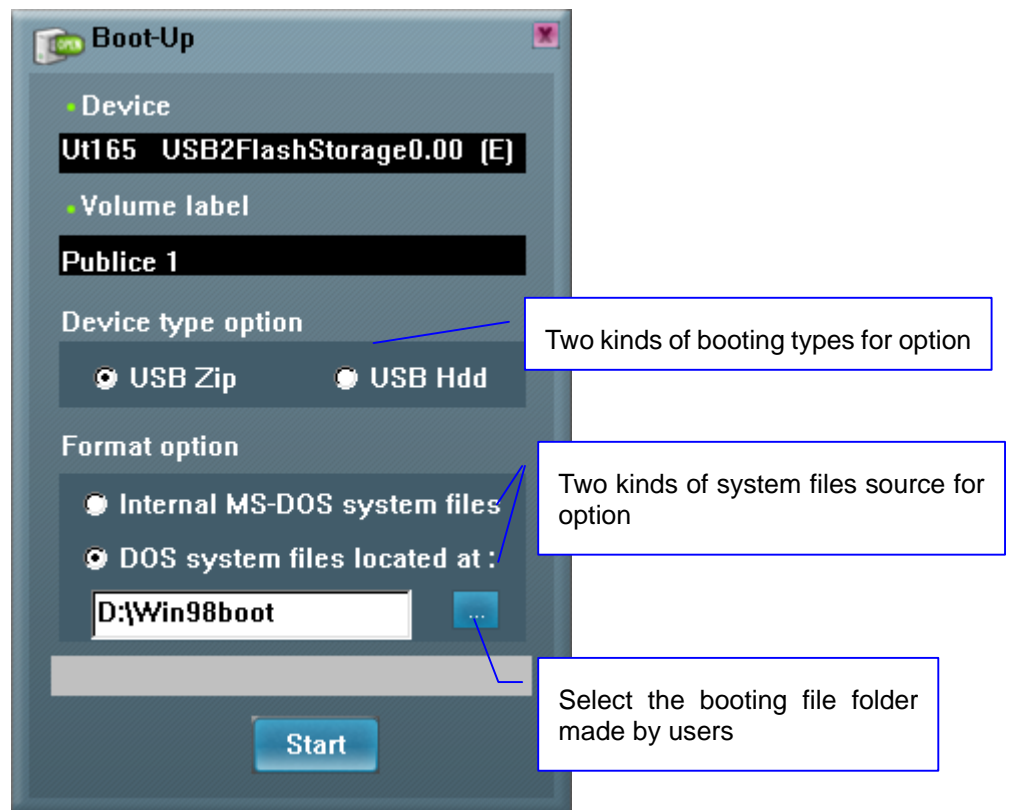


3.2.2 Making a Boot Disk (for Windows 98)

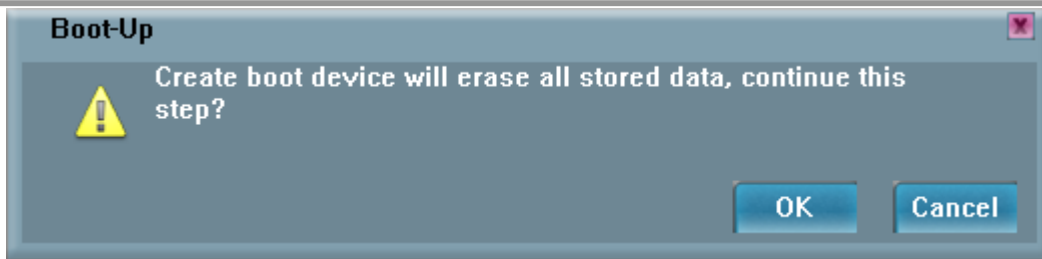
- Click “Boot Manager” on the UFD Utility bar



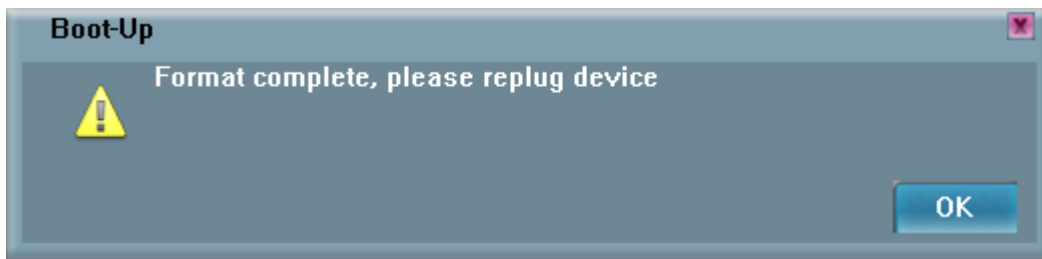
- “Boot-Up” window will pop up right after click as below.



- Users can select either “using internal MS-DOS system files” or “using MS-DOS system files located at:” in Windows 98.
- If users select “using internal MS-DOS system files”, then UFD Utility will copy “command.com” and “io.sys” under Windows 98 “Command” folder to UFD public area.
- If users select “using MS-DOS system files located at:”, UFD Utility will copy “command.com” and “io.sys” from user specify folder to UFD public area.
- Press “Start”.



- A warning message reminds user to backup all the data before partition then press "OK".



- Showing format complete message when finished. Re-plug device is necessary after finish.



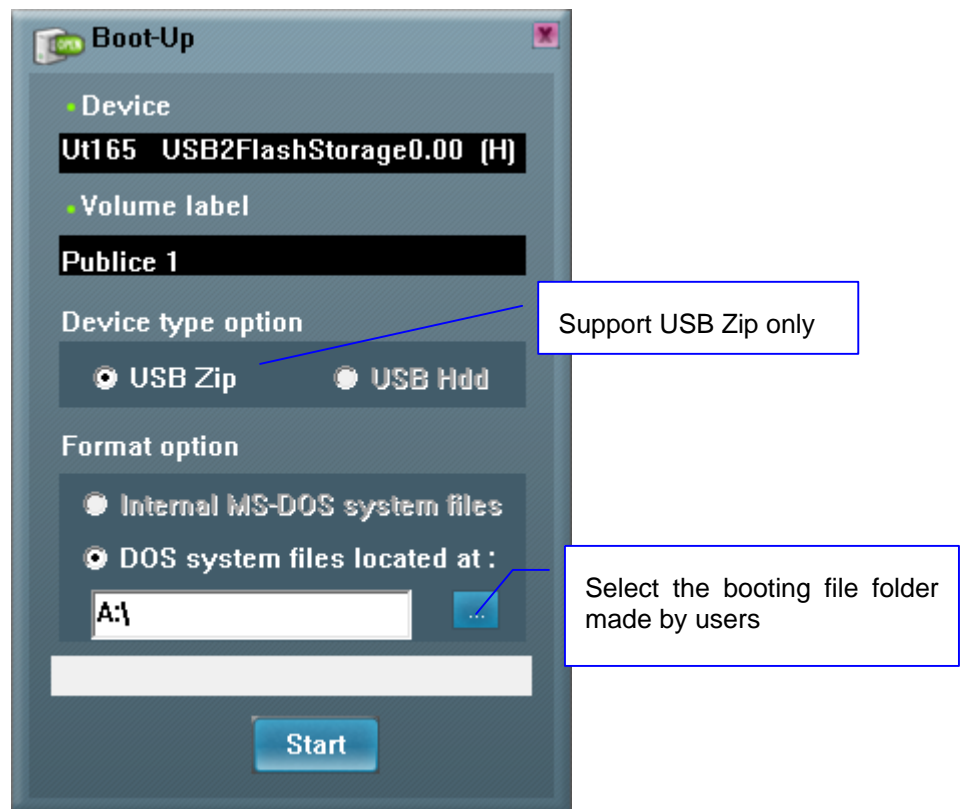
–

3.2.3 Making a Boot Disk (for Windows ME / 2000 / XP / Vista)

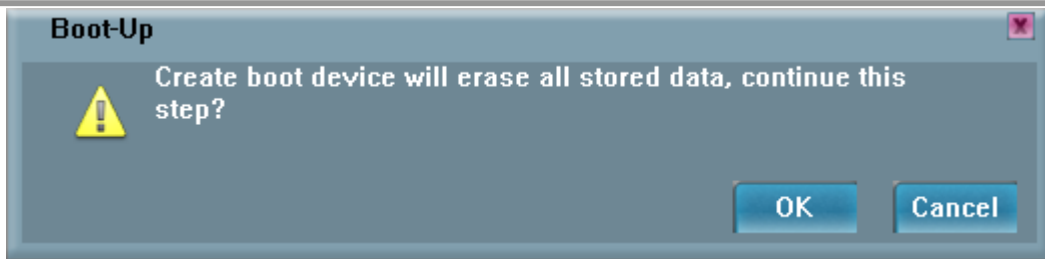
- Click “Boot Manager” on the UFD Utility bar



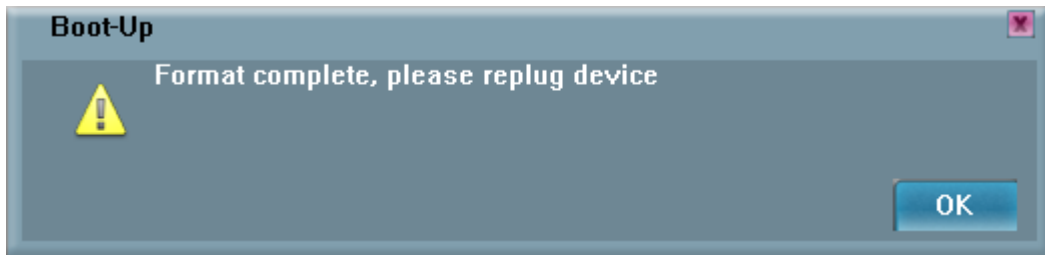
- “Boot-Up” window will pop up right after click as below.



- Users only can select “using MS-DOS system files located at:” when using Windows ME, 2000, XP or Vista platform.
- UFD Utility will copy “command.com” and “io.sys” from user specify folder to UFD public area.
- Press “Start”.



- A warning message prompts user to backup all the data before partition.
- Press "OK".



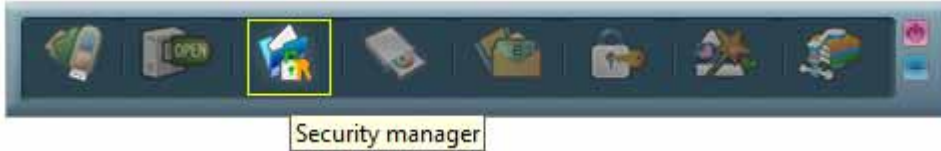
- Showing format complete message when finished. Re-plug device is necessary after finish.



3.3 Instructions of Security Manager:

3.3.1 Login to Security Area

- Click "Security Manager" on the UFD Utility bar.



- "Login/out" window will pop up right after click as below. Current status, "Logout" will show on window.



- Click "Hint" to recall the password, if the password was set but forget.
- Input the correct password to log into security area.

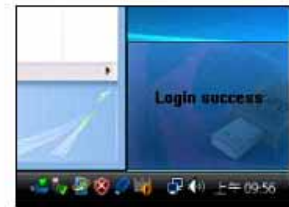
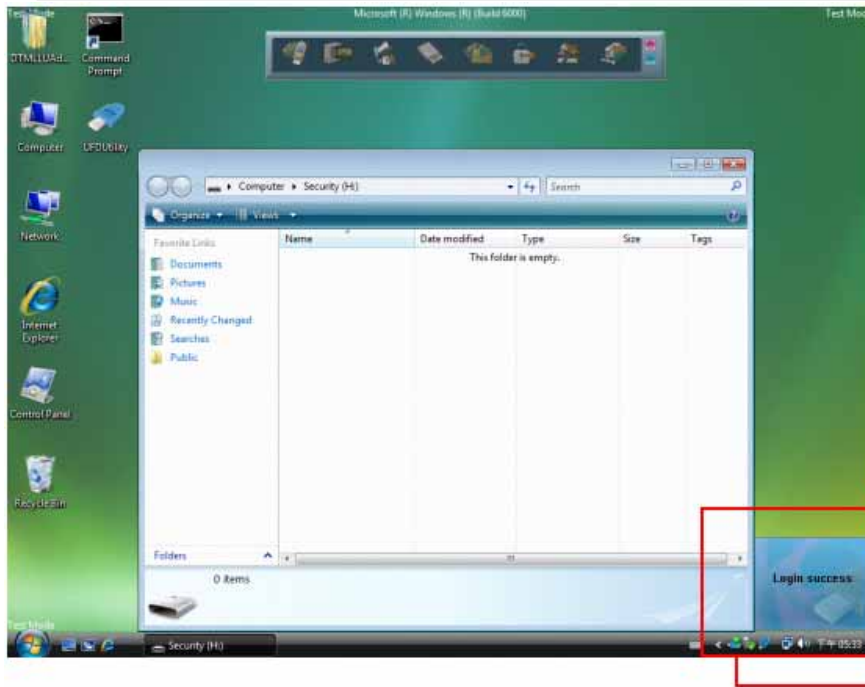


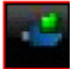
Figure3.31

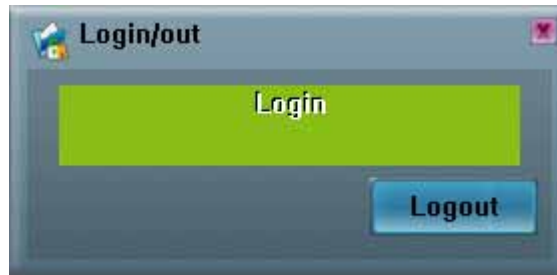


Figure3.32

- Figure 3.31, Figure 3.32 and removable disk window will pop up right after successful login.

3.3.2 Logout from Security Area

- Double click  on the icon bar; a "Login/out" window pops up. Current status, Login, will show up on window.



- Click "Logout"
- Removable disk Window will change from security area to public area after logout success.
- Only public area is accessible after logout the security area.

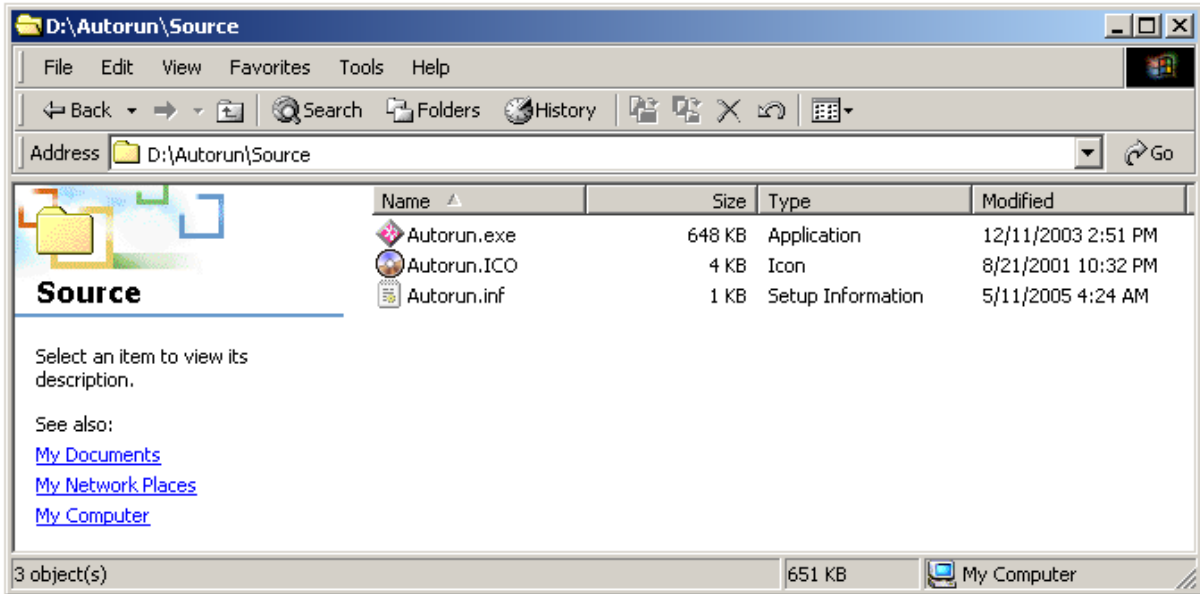


3.4 Instructions of Autorun Manager

3.4.1 Start from Source File Preparation

Prepare "Source File" in advance, including "Autorun.exe", "Autorun.inf" and "Autorun.ico (optional)"

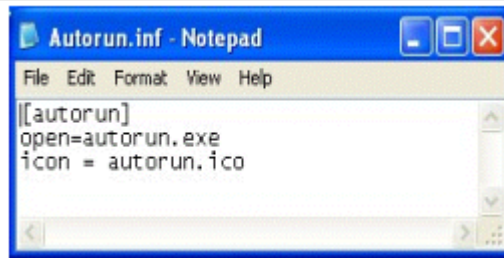
- Example of "Source File"



- Example of "Autorun.exe"



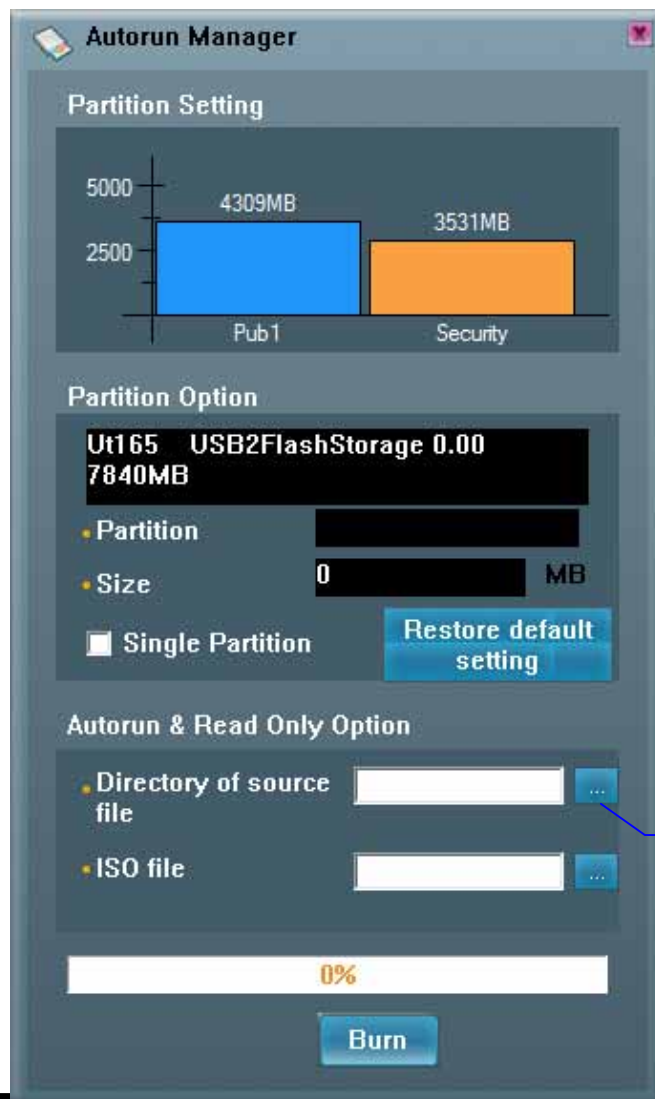
- Example of "Autorun.inf"



- Click "Autorun Manager" on the UFD Utility bar.

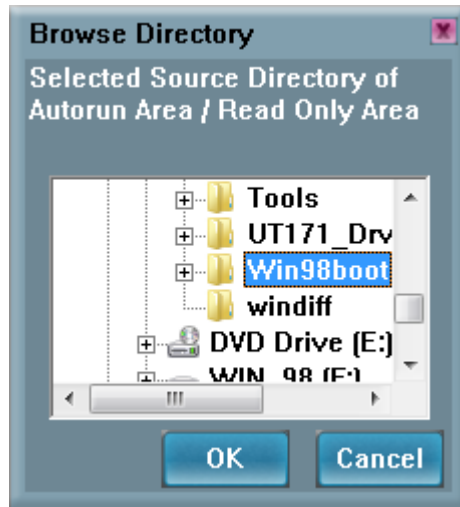


- "Autorun Manager" window will pop up right after click as below. Click on the button shown below and select the file-stored path.

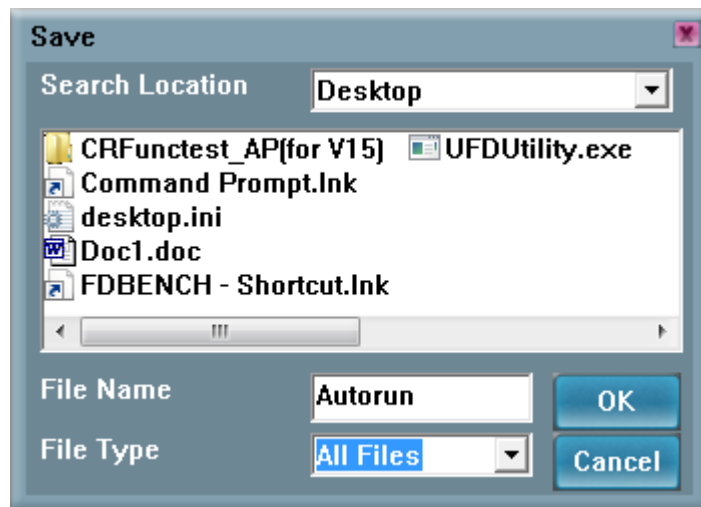


Select the directory of the source files

- Select the "Source File" store path and click "OK"

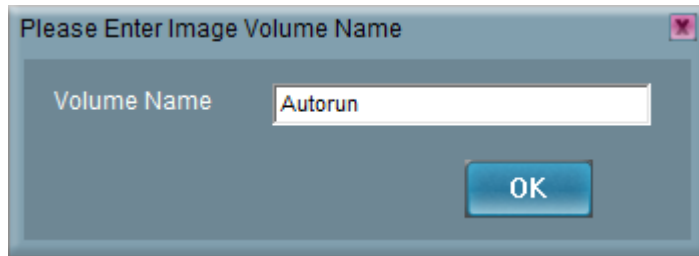


- Select the path to store "ISO File" and click "Save". *Notes: DO NOT PLACE BOTH ISO FILE AND SOURCE FILE IN THE SAME FOLDER OR VISTA ROOTS FOLDER.*

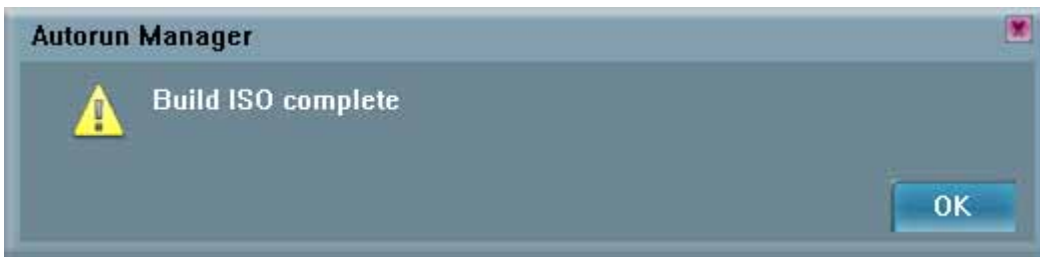




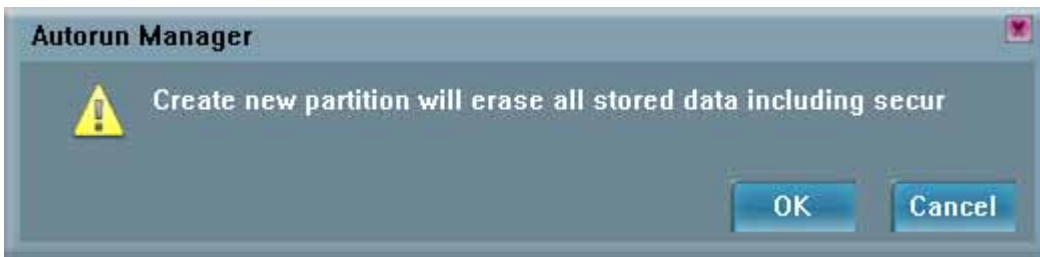
- Input the volume label of the CDROM and click "Build"



- "Build ISO complete" indication pops up, click "OK".



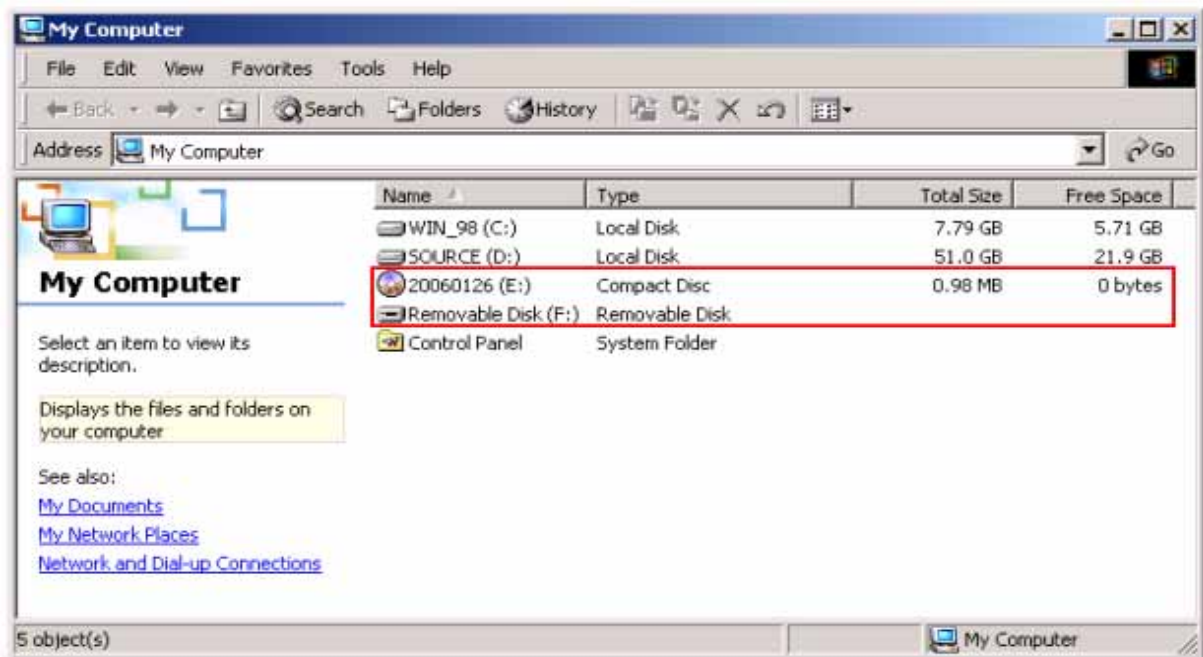
- A warning message prompts to user to backup all the data before partition.
- Click "OK"



- Burn ISO file completed. Re-plug device is necessary after finish.



- After re-plug the UFD, 2 disks will appear in "My Computer", "Compact Disk" and "Removable Disk".
- The virtual CDROM was partitioned successfully.



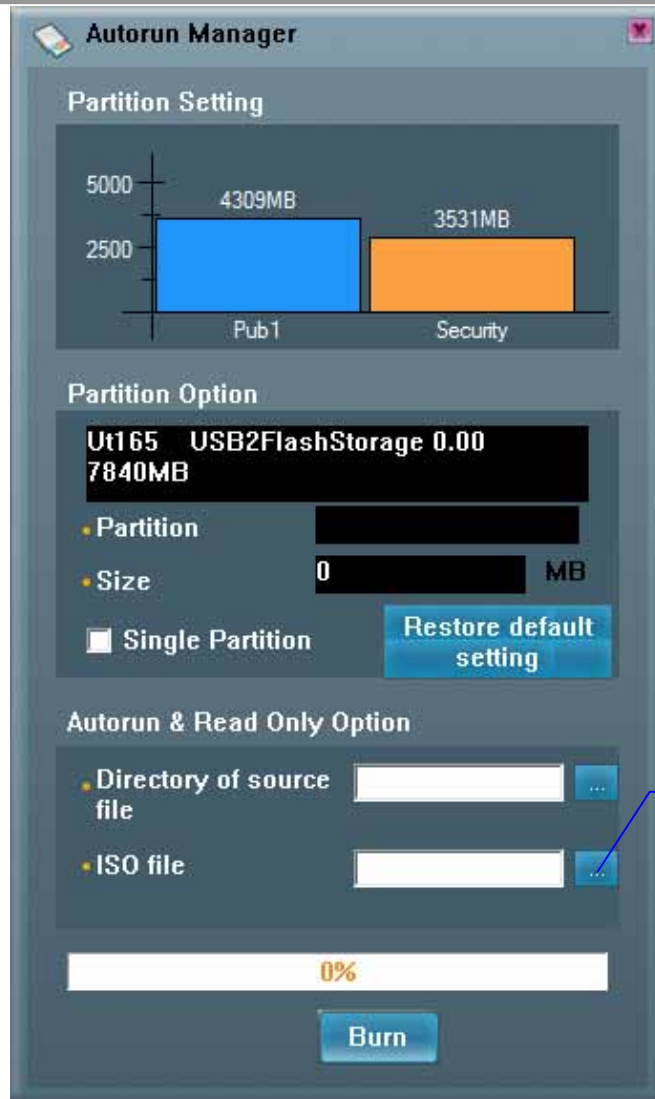
3.4.2 Start from Existing Source File

To use the existing ISO file to create a virtual CDROM for Autorun.

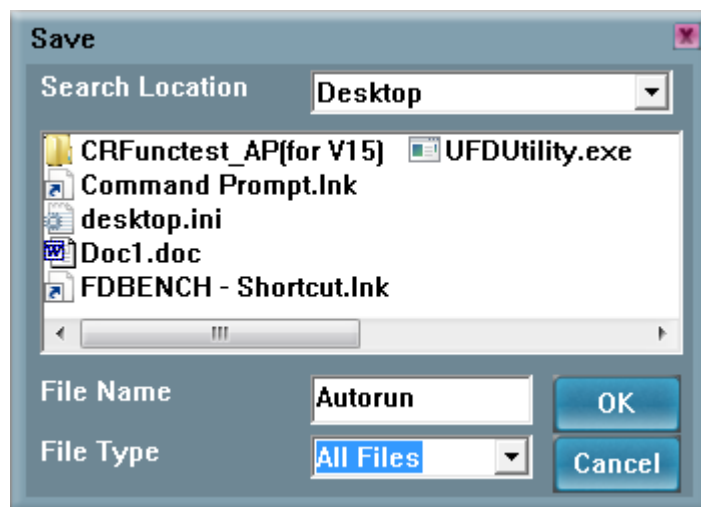
- Click “Autorun Manager” on the UFD Utility bar.



- “Autorun Manager” window will pop up right after click as below.

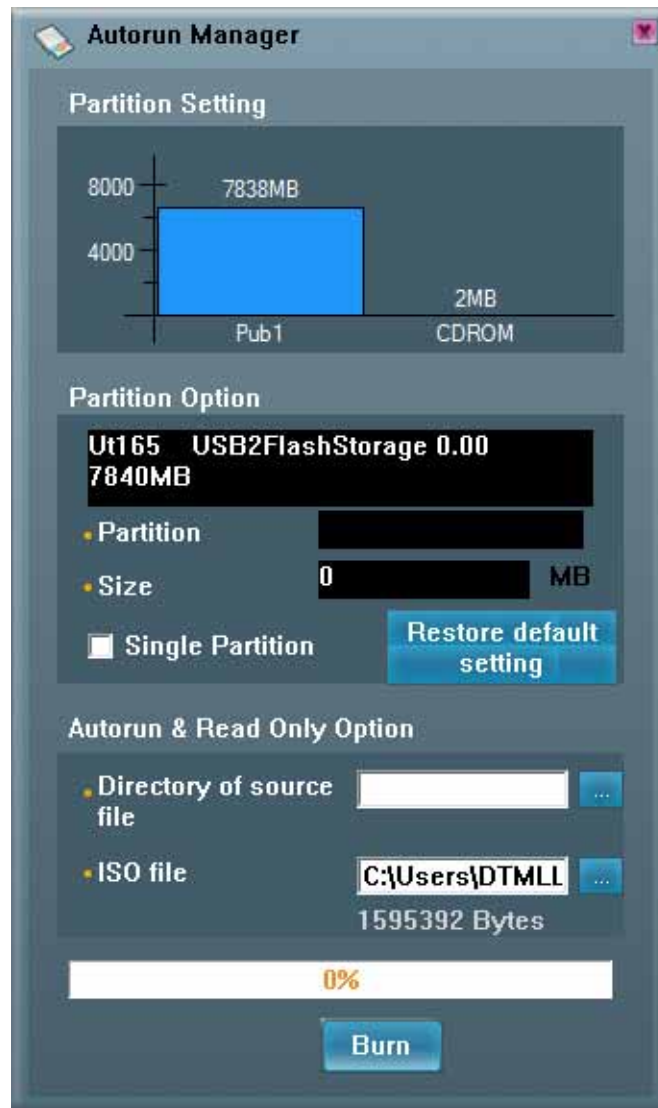


- Click ISO file browse button “...” to locate ISO file.





- Select the ISO file.



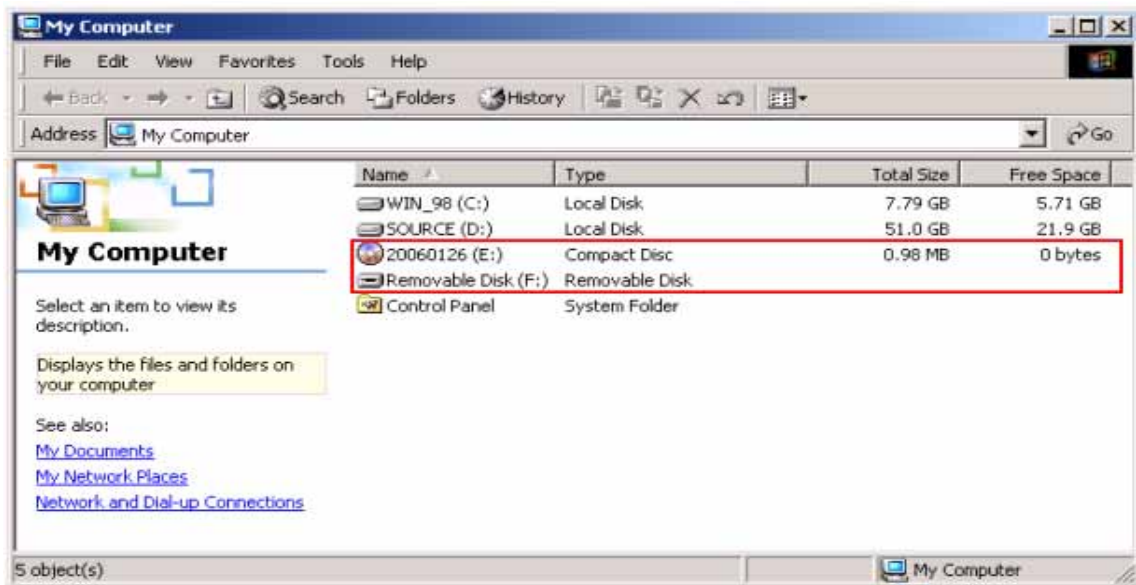
- Click "Burn".



- A warning message prompts to user to backup all the data before partition.
- Click "OK"



- When burn is complete, click "OK"



- After re-plug the UFD, 2 disks will appear in "My Computer", "Compact Disk" and "Removable Disk". Partitioning is successful.

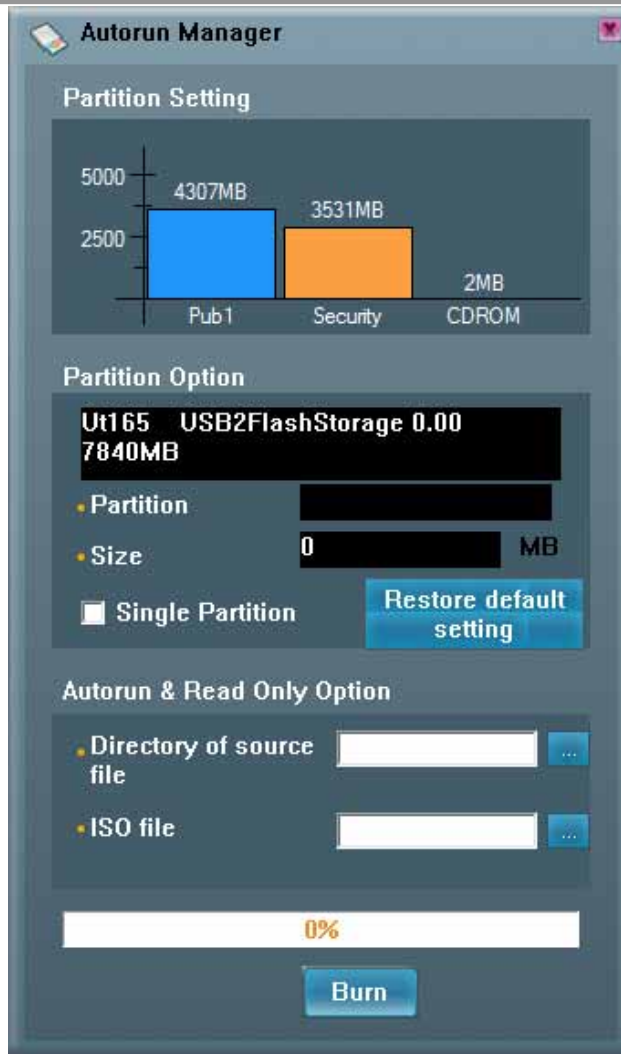
3.4.3 Restore To Default Setting

Restore to initial setting, single partition.

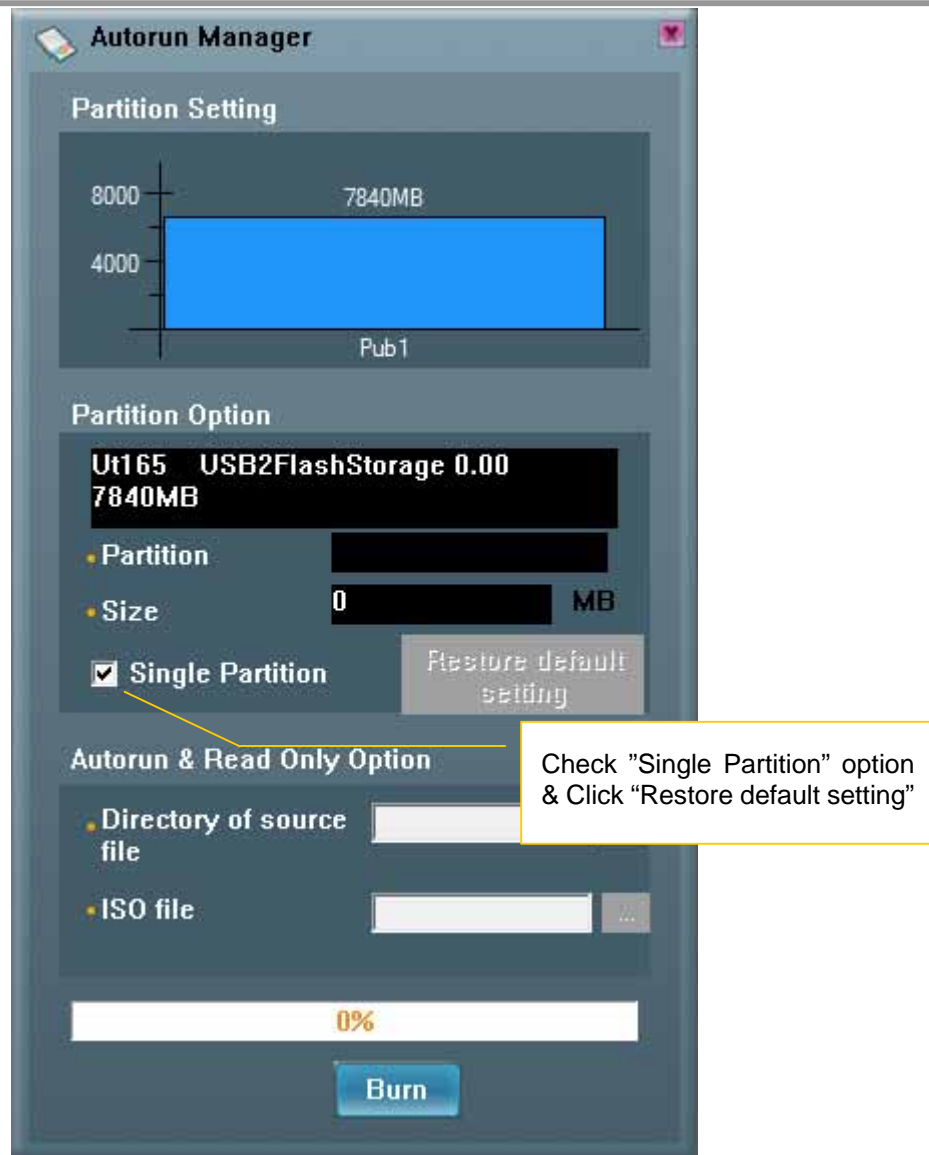
- Click "Autorun Manager" on the UFD Utility bar.



- "Autorun Manager" window will pop up right after click as below.



- Check "Single Partition" option, only one partition will be shown in left side. Click "Restore Default Setting" to restore original partitions.



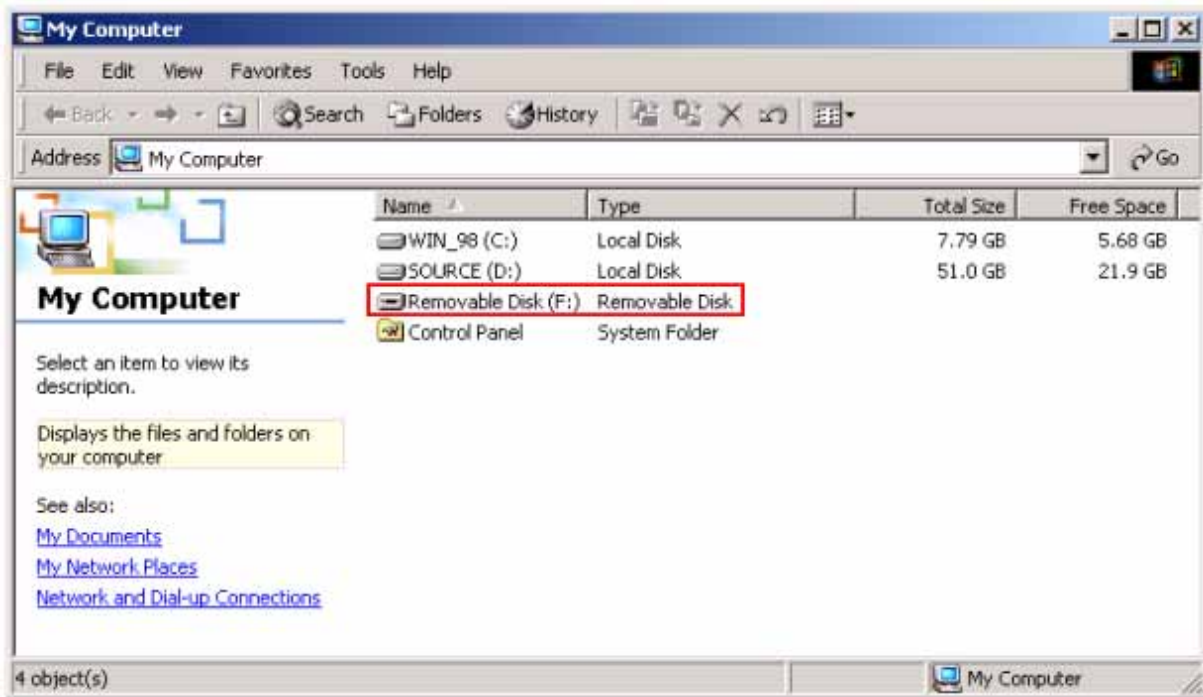
- Click "Burn". A warning message prompts to user to backup all the data before partition.
- Click "OK"



- Click "OK" after burn is complete.



- After re-plug the UFD, only one "Removable Disk" will appear in "My Computer".

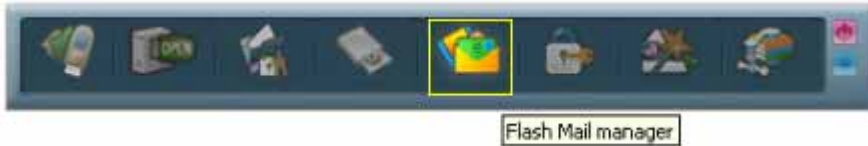




3.5 Instructions of Flash Mail Manager

3.5.1 First Time Set Up

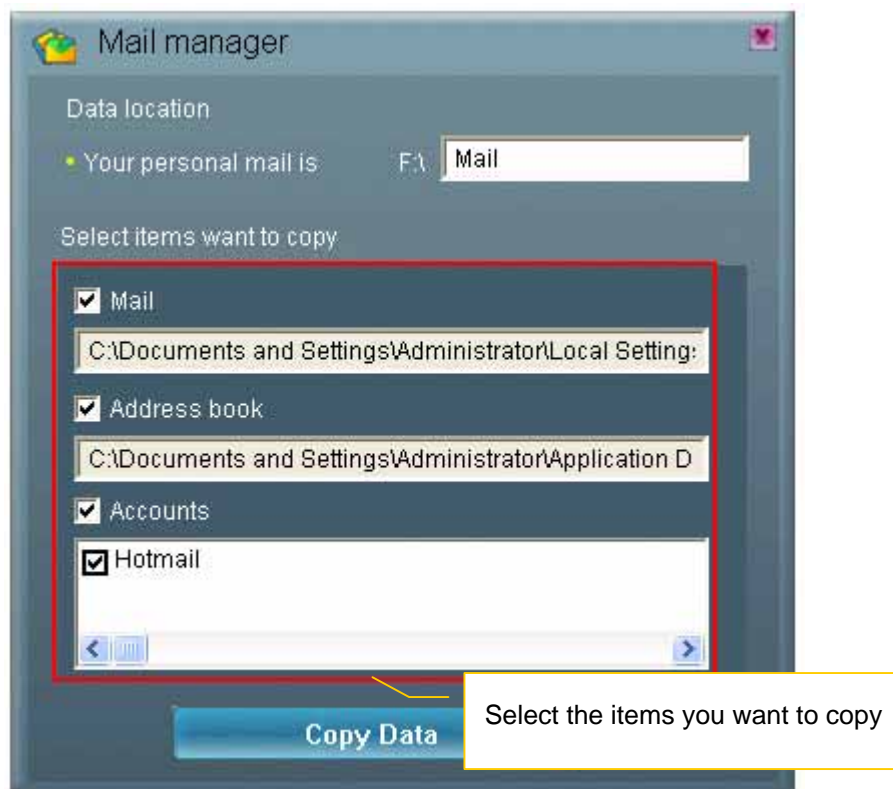
- Click "Flash Mail Manager" on the UFD Utility bar.



- Click "Yes" to continue flash mail setting if it is first time use.

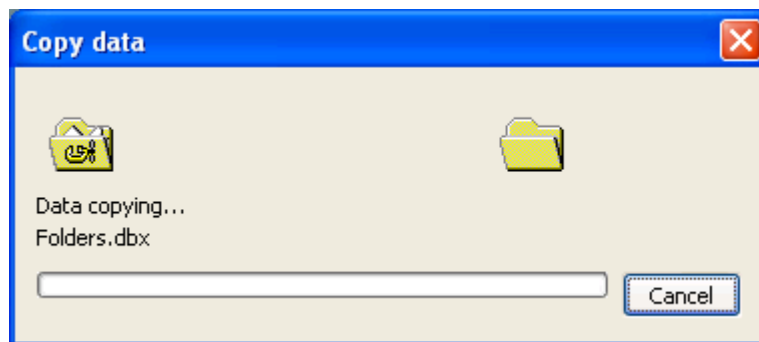


- "Mail Manager" window will pop up right after click as below.

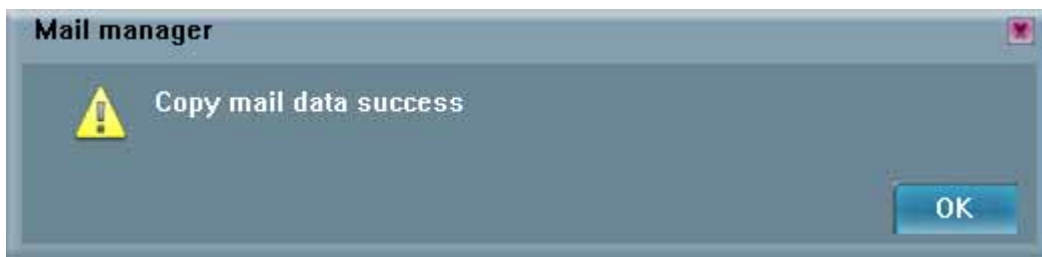




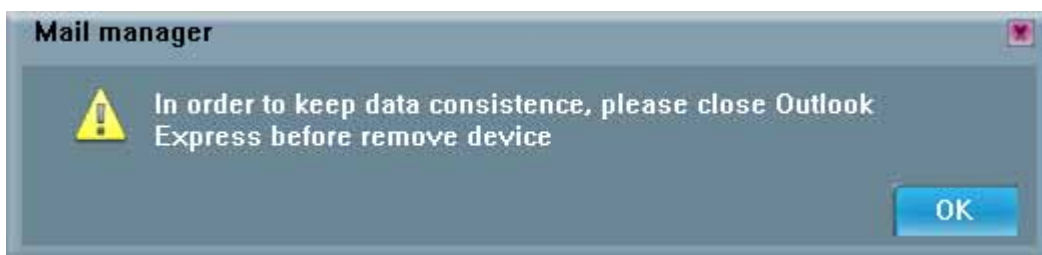
- Select the items you want to copy to UFD mail folder
- Click "Copy Data"
- Copy Email data to mail folder



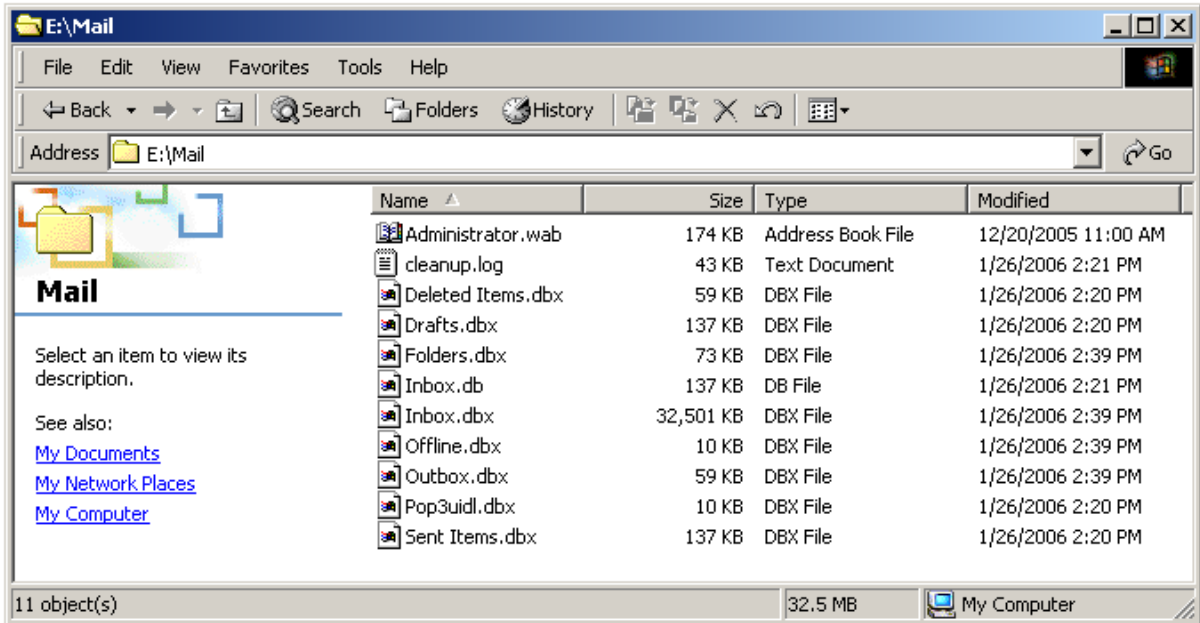
- Click "OK" when Email data was copied complete



- In order to keep data consistency, please close Outlook Express before remove device



- Click "OK"
- Re-plug UFD and one new mail folder is set up in UFD. This means email data was imported successfully.



3.5.2 Flash Mail Manager Operation Flow

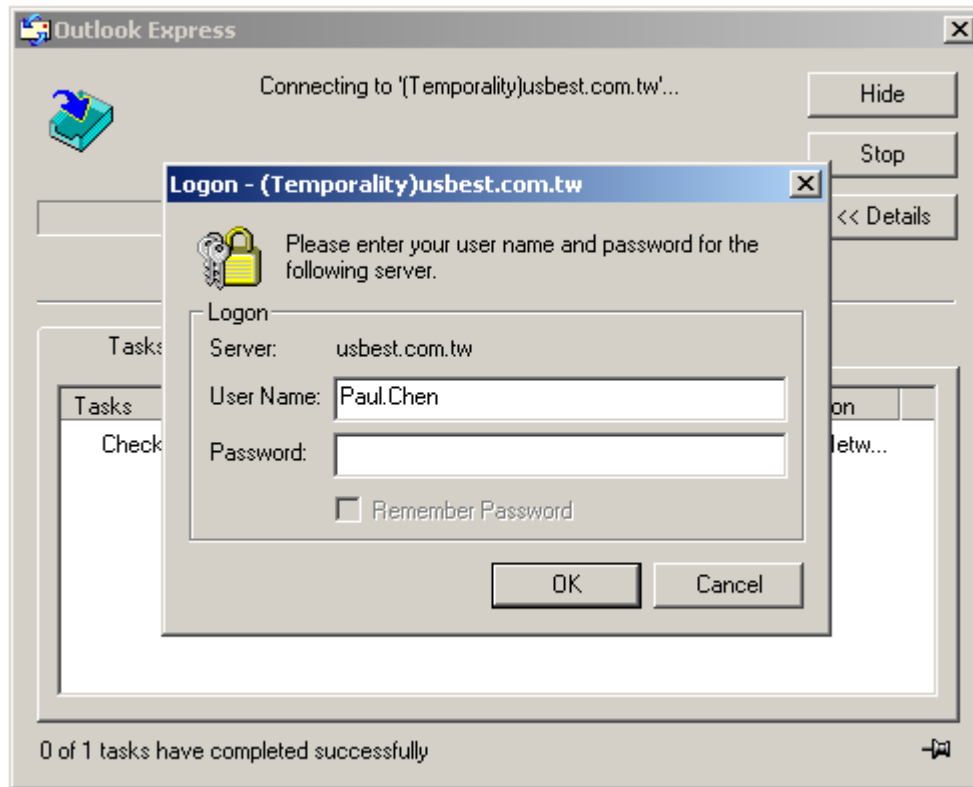
- Click “Flash Mail manager” in UFD utility bar



- In order to keep data consistency, please close Outlook Express before remove device
- Click “OK”



- Please enter your username and password when logon dialog appears



- Then user can send and receive emails on Windows platform. *Note: If use "Flash Mail Manager" to send or receive mails the new mail will be store in UFD "Mail" folder only. No mail will update in your PC Outlook Express.*
- This function not supports Vista Windows Mail.

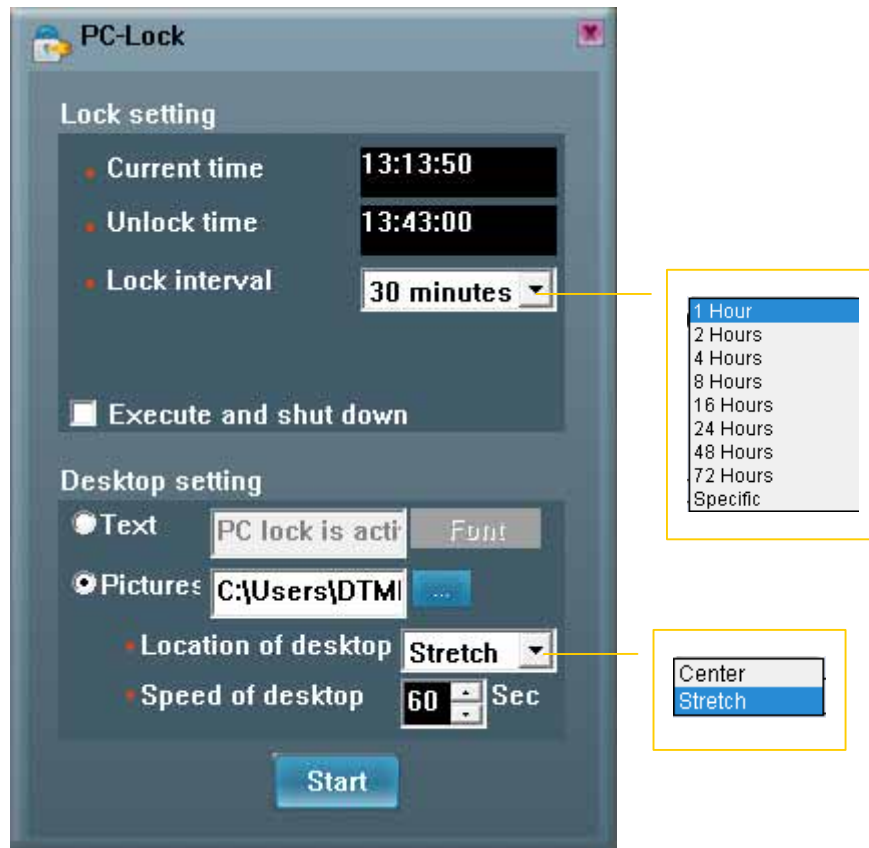


3.6 Instructions of PC Lock Manager

- Click "PC Lock Manager" on the UFD Utility bar.



- "PC Lock" window will pop up right after click as below.



- Select time from "Lock Interval" reel: PC Lock Manager will start screen saver according to users setting time.
- User can click "Execute and shut down" after selecting lock interval time. Then the computer will shut down and lock PC. (Computer will lock PC when re-starting)
- User can select the wallpaper of screen saver from text or pictures display.
- Must indicate the location of folder that picture storage. The picture must be JPG, GIF or BMP file.
- User can select location of wallpaper at center or stretch to the screen size.



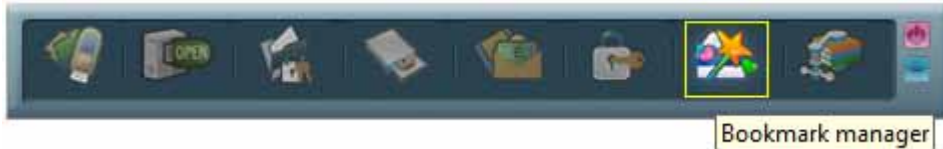
- User can set the speed of wallpaper change.
- After setting and pressing <Start>, PC will be locked immediately when you un-plug UFD.
- Please well keep UFD after executing PC Lock Manager.
- Re-plug same UFD to computer in any time to un-locking PC, than user can start using computer again.
- This function not supports Fixed Disk Type.



3.7 Instructions of Bookmark Manager

3.7.1 Import My Favorites

- Click "Bookmark Manager" on the UFD Utility bar.



- "UBookmark" window will pop up right after click as below.



- Click "Import my favorites", will copy My Favorites directory to UFD Device.
- After completion, remove the UFD device.
- If success, there will be created one Favorites folder in the UFD directory.

3.7.2 Select PC Bookmark or UFD Bookmark

- Click "Bookmark Manager" on the UFD Utility bar.



- "UBookmark" window will pop up right after click as below.





- Selected PC or UFD Bookmark in the Bookmark manager window.
- IE will load user selected Bookmark after close the Bookmark manager window.

3.7.3 How to use PC Bookmark or UFD Bookmark



Select "Run Internet Explorer after the button is selected"

- Select "Run Internet Explorer after the button is selected"
- Browse website after user select PC bookmark or UFD bookmark button.
- Before remove UFD must back to Bookmark manager and click "PC Bookmark".

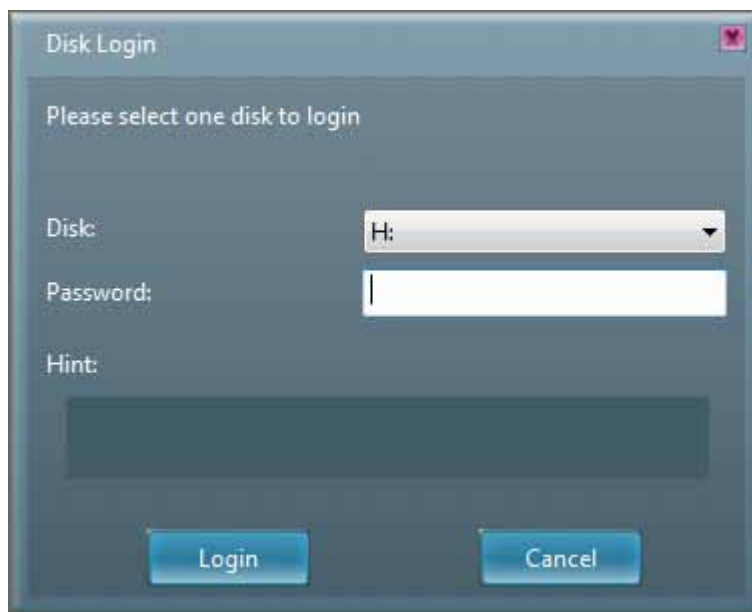


3.8 Introduction of Security Folder

Click "Security Folder" on the UFD Utility bar



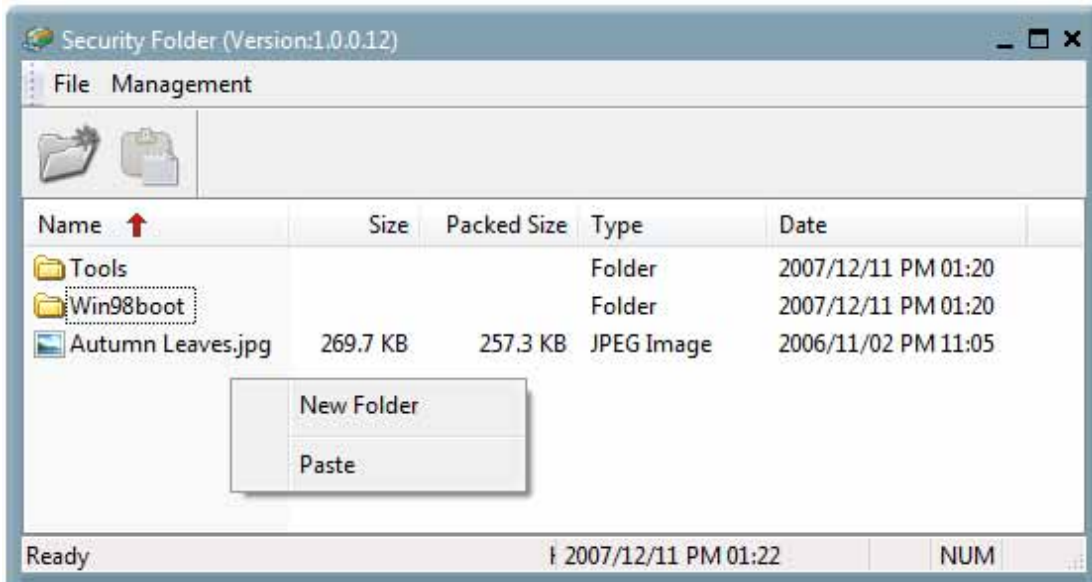
After "Disk Login" window pop up please input password.



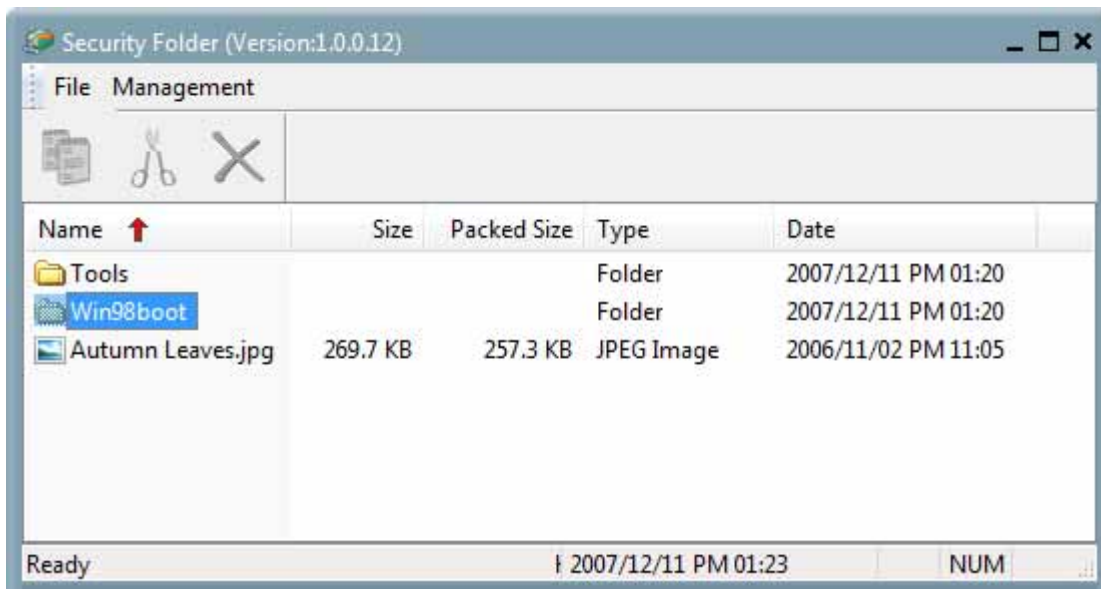


3.8.1 Secret area data access

After login to secret area user can create folder or copy file.



Cut file and delete file.

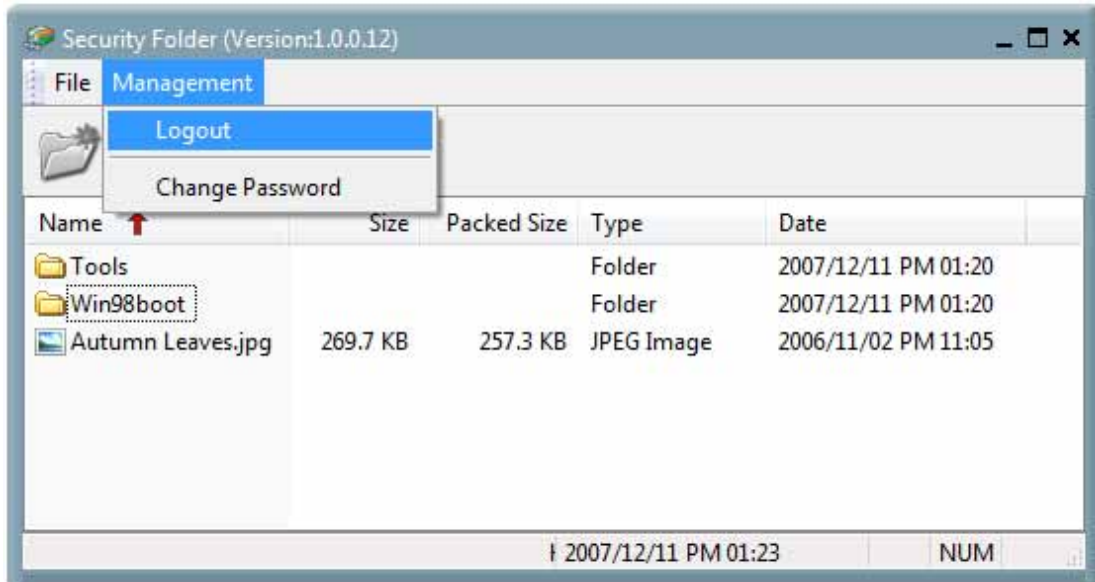


Close "Security Folder" window will logout secret area. Login secret area again user should click "Compress Manager" and input password again.

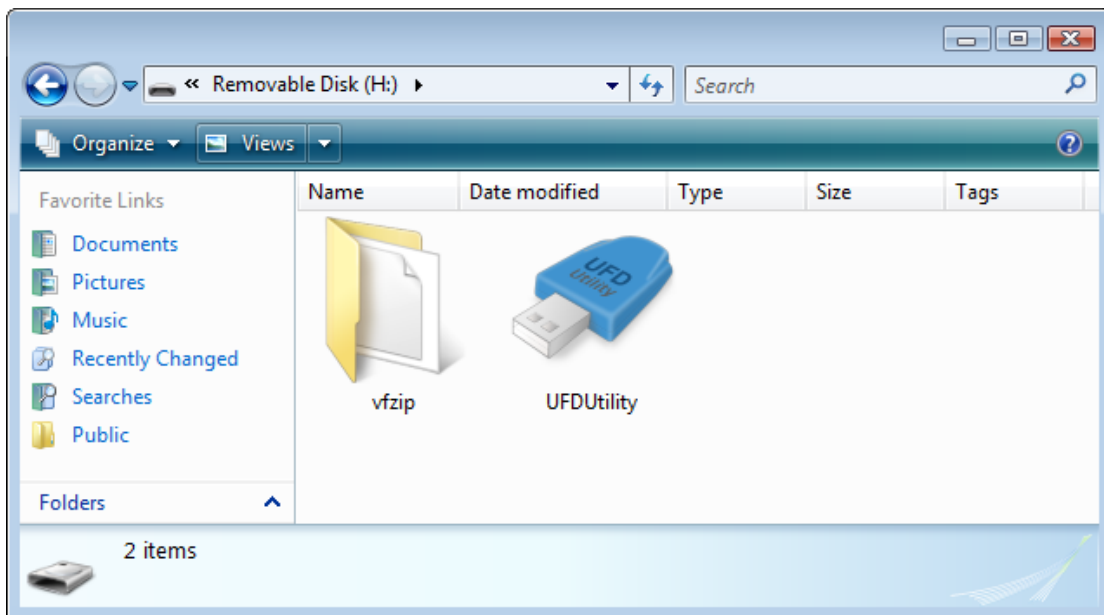


3.8.2 Change Secret area password

At "management" user can logout or change password.



After logout to the public area user will found vfbest.vfo file under vfzip folder. This file is the Zip file for secret area and only can be use by login to secret area. (Delete vfbest.vfo will cause all data under secret area missing.)





4. Copyright Notice

Copyright 2008 by Afa Technology Inc. All Rights Reserved.

This manual is copyrighted by Afa Technology Inc. You may not reproduce, transmit, transcribe, store in a retrieval system, or translate into any language, in any form or by any means, electronic, mechanical, magnetic, optical, chemical, manual, or otherwise, any part of this publication without the expressly written permission from Afa Technology Inc.

Trademarks

All brand or product names mentioned are trademarks or registered trademarks of their respective holders.

Disclaimer

Afa Technology Inc. makes no representations or warranties regarding the Contents of this manual. We reserve the right to revise the manual or make changes in the specifications of the product described within it at any time without notice and without obligation to notify any person of such revision or change. The information contained in this manual is provided for the general use by our customers. Our customers should be aware that the personal computer and its peripheral field is the subject of many patents. Our customers should ensure that they take appropriate action so that their use of our products does not infringe upon any patents. It is the policy of Afa Technology Inc. to respect the valid patent rights of third parties and not to infringe upon or assist others to infringe upon such rights.