

UTX3105-UTX3120, UTX4105-UTX4120

SUPER FAST RECOVERY RECTIFIERS

FEATURES:

- Available as "HR" (high reliability) screened per MIL-PRF-19500, JANTX level. Add "HR" suffix to base part number
- Available Non-RoHS (standard) or RoHS compliant (add PBF suffix)

MAXIMUM RATINGS

Characteristic	3 amp series	4 amp series
Maximum average DC output current @ T _A = 25°C	3.0A	4.0A
@ T _A = 100°C	1.5A	2.0A
Non-repetitive sinusoidal Surge current (8.3ms)	60A	80A
Operating temperature range	-195 to +175°C	
Storage temperature range	-195 to +200°C	

ELECTRICAL CHARACTERISTICS

Part number	Peak inverse voltage	Maximum forward voltage drop	Maximum leakage current @ PIV		Maximum reverse recovery time *
			25°C	100°C	
UTX4105	50V	1V @ 3 Adc	5μA	75μA	100ns
UTX4110	100V				
UTX4115	150V				
UTX4120	200V				
UTX3105	50V	1V @ 2 Adc	5μA	75μA	100ns
UTX3110	100V				
UTX3115	150V				
UTX3120	200V				

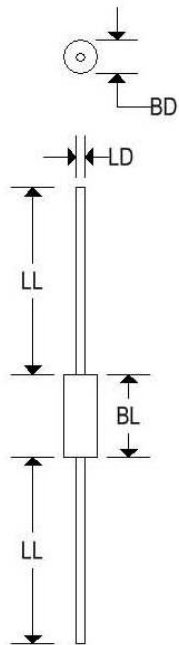
Recovery time is measured from 1A to 1A recovering to 0.5A.

UTX3105-UTX3120, UTX4105-UTX4120

SUPER FAST RECOVERY RECTIFIERS

MECHANICAL CHARACTERISTICS

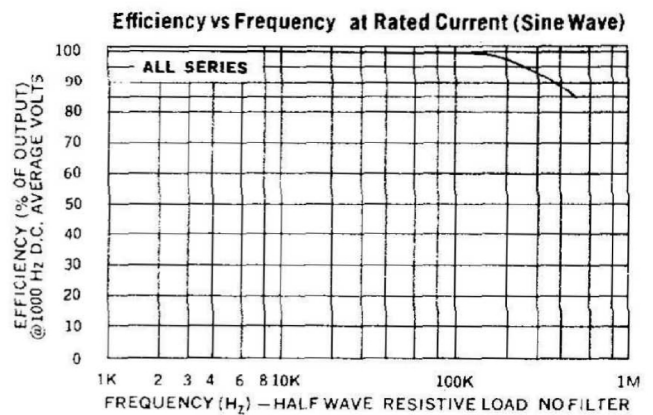
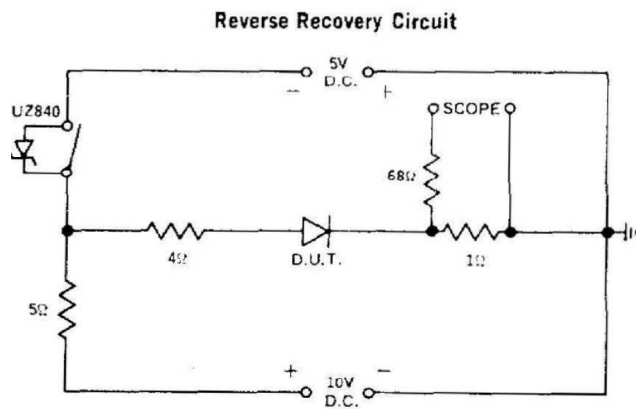
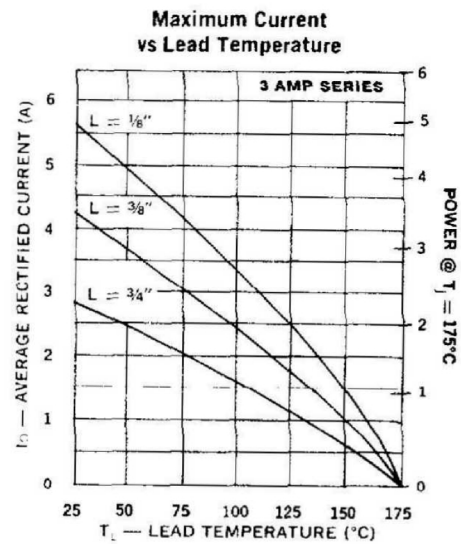
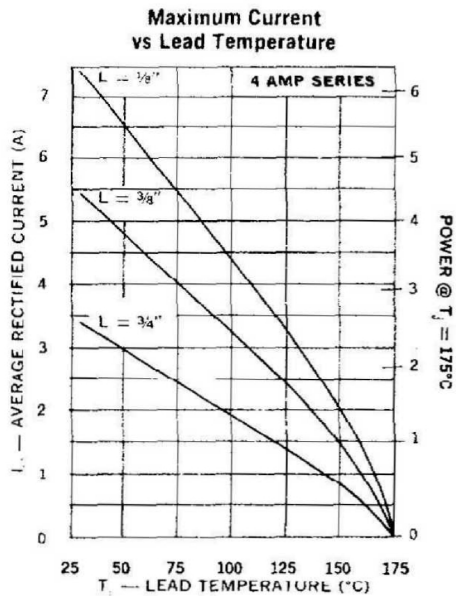
Case	Digi B
Marking	Body painted, alpha-numeric
Polarity	Cathode band



	Digi B			
	Inches		Millimeters	
	Min	Max	Min	Max
BD	-	0.135	-	3.429
BL	-	0.250	-	6.350
LD	0.038	0.042	0.965	1.067
LL	0.975	-	24.765	-

UTX3105-UTX3120, UTX4105-UTX4120

SUPER FAST RECOVERY RECTIFIERS



UTX3105-UTX3120, UTX4105-UTX4120

SUPER FAST RECOVERY RECTIFIERS

