

- Tentative Specification
- Preliminary Specification
- Approval Specification

MODEL NO.: V546H1

SUFFIX: LH3

(Super Clear)

Customer:	
APPROVED BY	SIGNATURE
Name / Title _____	_____
Note	
Please return 1 copy for your confirmation with your signature and comments.	

Approved By	Checked By	Prepared By
Chao-Chun Chung	Ken Wu	Alan Hung

CONTENTS -

REVISION HISTORY	4
1. GENERAL DESCRIPTION	5
1.1 OVERVIEW	5
1.2 FEATURES	5
1.3 APPLICATION	5
1.4 GENERAL SPECIFICATIONS	5
1.5 MECHANICAL SPECIFICATIONS	5
2. ABSOLUTE MAXIMUM RATINGS	6
2.1 ABSOLUTE RATINGS OF ENVIRONMENT	6
2.2 ELECTRICAL ABSOLUTE RATINGS	7
3. ELECTRICAL CHARACTERISTICS	8
3.1 TFT LCD MODULE	8
3.2 BACKLIGHT UNIT	10
4. BLOCK DIAGRAM OF INTERFACE	14
4.1 TFT LCD MODULE	14
5 .INPUT TERMINAL PIN ASSIGNMENT	15
5.1 TFT LCD Module	15
5.2 BACKLIGHT UNIT	19
5.3 INVERTER UNIT	19
5.4 BLOCK DIAGRAM OF INTERFACE	21
5.5 LVDS INTERFACE	22
5.6 COLOR DATA INPUT ASSIGNMENT	23
6. INTERFACE TIMING	24
6.1 INPUT SIGNAL TIMING SPECIFICATIONS	24
6.2 POWER ON/OFF SEQUENCE	26
7. OPTICAL CHARACTERISTICS	27
7.1 TEST CONDITIONS	27
7.2 OPTICAL SPECIFICATIONS	27
8. DEFINITION OF LABELS	31
8.1 CMO MODULE LABEL	31
9. PACKING	32
9.1 PACKING SPECIFICATIONS TYPE I	32
9.2 PACKING METHOD TYPE I	32
10. PRECAUTIONS	34
10.1 ASSEMBLY AND HANDLING PRECAUTIONS	34
10.2 SAFETY PRECAUTIONS	34

10.3 SAFETY STANDARDS	34
11. MECHANICAL CHARACTERISTIC	35
Appendix – TWO Wire BUS INTRODUCTION	37
A.1 PIN ASSIGNMENT	37
A.2 I2C BUS APPLICATION NOTE	37
A.3 TWO WIRE BUS DEVICE ADDRESS	37
A.4 TWO WAY TO CONTROL THE TWO WIRE BUS	39
A.5 TWO WIRE BUS COMMAND TABLE	40
A.6 TWO WIRE BUS REQUIREMENT	44
A.7 THE TWO WIRE BUS SEQUENCE	45

REVISION HISTORY

Version	Date	Page (New)	Section	Description
2.3	June.24,'10	All	All	Approval Specification Ver 2.3 was first issued.

1. GENERAL DESCRIPTION

1.1 OVERVIEW

V546H1-LH2 is a 54.6" TFT Liquid Crystal Display module with 22-CCFL Backlight unit and 2ch-LVDS interface. This module supports 1920 x 1080 HDTV format and can display true 1.073G colors (8-bit+Hi-FRC/color). The inverter module for backlight is built-in.

1.2 FEATURES

- High brightness (500nits)
- High contrast ratio (4000:1)
- Fast response time (Gray to Gray typical 4.5ms)
- High color saturation (72% NTSC)
- Full HDTV (1920 x 1080 pixels) resolution, true HDTV format
- DE (Data Enable) only mode
- LVDS (Low Voltage Differential Signaling) interface
- Optimized response time for 120 Hz frame rate
- Ultra wide viewing angle: Super MVA technology

1.3 APPLICATION

- Standard Living Room TVs.
- Public Display Application.
- Home Theater Application.
- MFM Application.

1.4 GENERAL SPECIFICATIONS

Item	Specification	Unit	Note
Active Area	1209.6(H) x 680.4(V) (54.6" diagonal)	mm	(1)
Bezel Opening Area	1217.6 (H) x 688.4 (V)	mm	
Driver Element	a-si TFT active matrix	-	-
Pixel Number	1920x R.G.B. x 1080	pixel	-
Pixel Pitch(Sub Pixel)	0.21(H) x 0.63(V)	mm	-
Pixel Arrangement	RGB vertical stripe	-	-
Display Colors	1.073G (8-bit+Hi-FRC/color)	color	-
Display Operation Mode	Transmissive mode / Normally black	-	-
Surface Treatment	Anti-Glare coating (Super Clear) Hardness (3H)	-	(2)

Note (1) Please refer to the attached drawings in chapter 9 for more information about the front and back outlines.

Note (2) The spec of the surface treatment is temporarily for this phase. CMO reserves the rights to change this feature.

1.5 MECHANICAL SPECIFICATIONS

	Item	Min.	Typ.	Max.	Unit	Note
Module Size	Horizontal (H)	1266.1	1267.6	1269.1	mm	(1), (2)
	Vertical (V)	737.2	738.4	739.6	mm	
	Depth (D)	38.5	40	41.5	mm	
	Weight	-	20500	-	g	-

Note (1) Please refer to the attached drawings for more information of front and back outline dimensions.

Note (2) Module Depth does not include connectors.

2. ABSOLUTE MAXIMUM RATINGS

2.1 ABSOLUTE RATINGS OF ENVIRONMENT

Item	Symbol	Value		Unit	Note
		Min.	Max.		
Storage Temperature	T _{ST}	-20	+60	°C	(1)
Operating Ambient Temperature	T _{OP}	0	50	°C	(1), (2)
Shock (Non-Operating)	S _{NOP}	±X, ±Y	30	G	(3), (5)
		±Z	30		
Vibration (Non-Operating)	V _{NOP}	-	1.0	G	(4), (5)

Note (1) Temperature and relative humidity range is shown in the figure below.

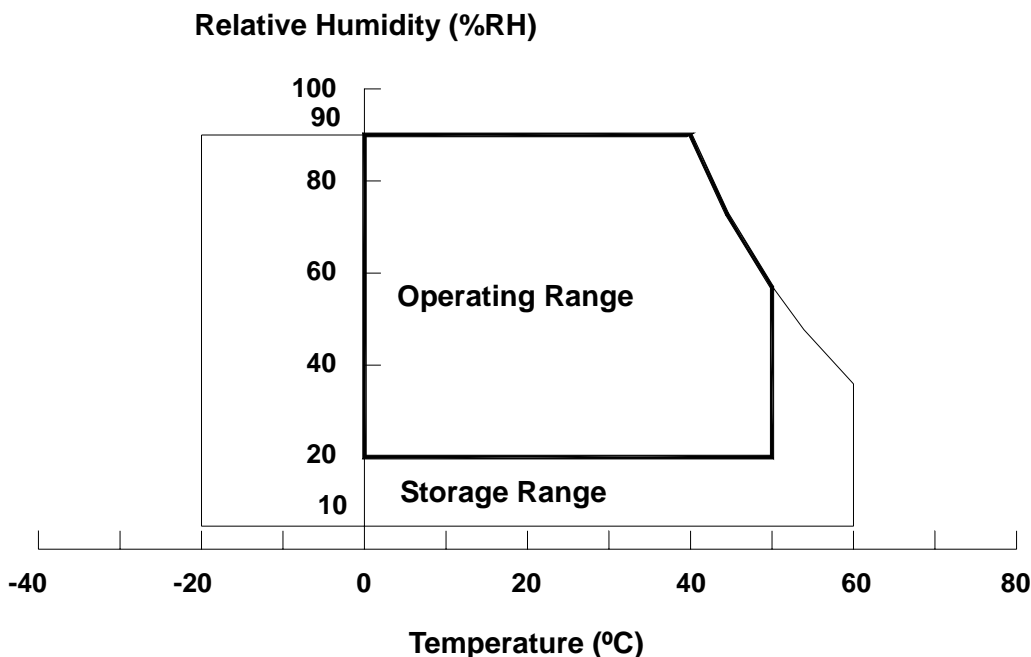
- (a) 90 %RH Max. (Ta ≤ 40 °C).
- (b) Wet-bulb temperature should be 39 °C Max. (Ta > 40 °C).
- (c) No condensation.

Note (2) The maximum operating temperature is based on the test condition that the surface temperature of display area is less than or equal to 65 °C with LCD module alone in a temperature controlled chamber. Thermal management should be considered in final product design to prevent the surface temperature of display area from being over 65 °C. The range of operating temperature may degrade in case of improper thermal management in final product design.

Note (3) 11 ms, half sine wave, 1 time for ± X, ± Y, ± Z.

Note (4) 10 ~ 200 Hz, 10 min, 1 time each X, Y, Z.

Note (5) At testing Vibration and Shock, the fixture in holding the module has to be hard and rigid enough so that the module would not be twisted or bent by the fixture.



2.2 ELECTRICAL ABSOLUTE RATINGS

2.2.1 TFT LCD MODULE

Item	Symbol	Value		Unit	Note
		Min.	Max.		
Power Supply Voltage	V_{CC}	-0.3	13.5	V	(1)
Logic Input Voltage	V_{IN}	-0.3	3.6	V	

2.2.2 BACKLIGHT INVERTER UNIT

Item	Symbol	Value		Unit	Note
		Min.	Max.		
Lamp Voltage	V_W	—	3000	V_{RMS}	

Note (1) Permanent damage to the device may occur if maximum values are exceeded. Function operation should be restricted to the conditions described under Normal Operating Conditions.

3. ELECTRICAL CHARACTERISTICS

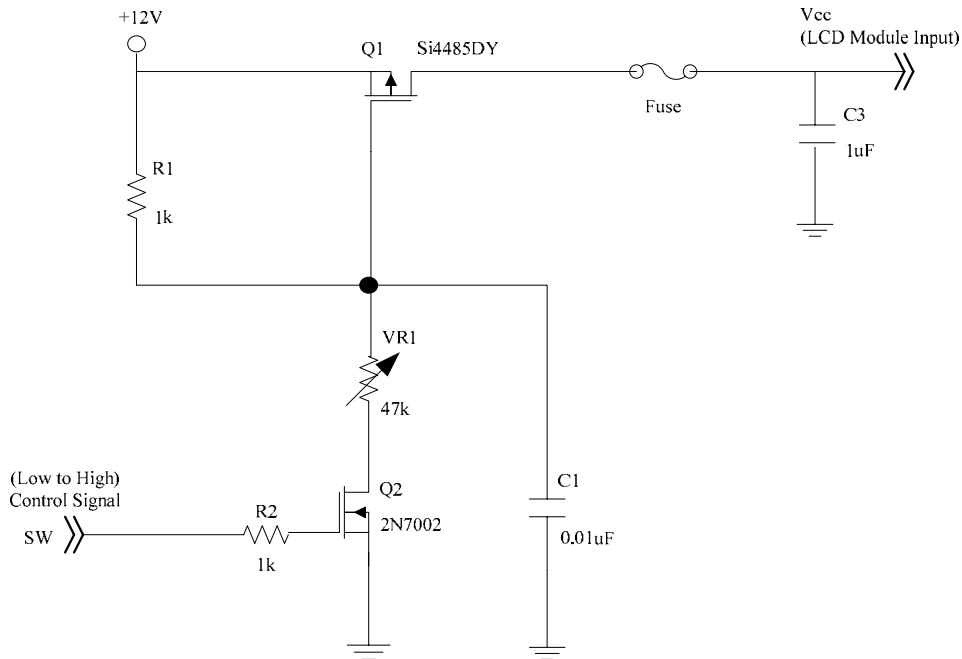
3.1 TFT LCD MODULE

(Ta = 25 ± 2 °C)

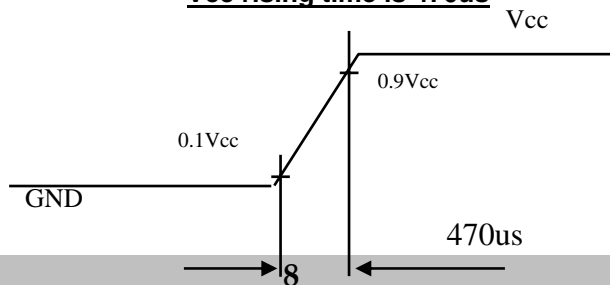
Parameter		Symbol	Value			Unit	Note
			Min.	Typ.	Max.		
Power Supply Voltage		V _{CC}	10.8	12	13.2	V	(1)
Rush Current		I _{RUSH}	-	-	5.25	A	(2)
Power Supply Current	White Pattern	-	-	1.23	-	A	(3)
	Horizontal Stripe	-	-	2.1	2.28	A	
	Black Pattern	-	-	0.99	-	A	
LVDS interface	Differential Input High Threshold Voltage	V _{LVTH}	+100	-	-	mV	(4)
	Differential Input Low Threshold Voltage	V _{LVTL}	-	-	-100	mV	
	Common Input Voltage	V _{CM}	1.0	1.2	1.4	V	
	Differential input voltage (Single-end)	V _{ID}	200	-	600	mV	
	Terminating Resistor	R _T	-	100	-	ohm	
CMOS interface	Input High Threshold Voltage	V _{IH}	2.7	-	3.3	V	
	Input Low Threshold Voltage	V _{IL}	0	-	0.7	V	

Note (1) The module should be always operated within the above ranges.

Note (2) Measurement condition:

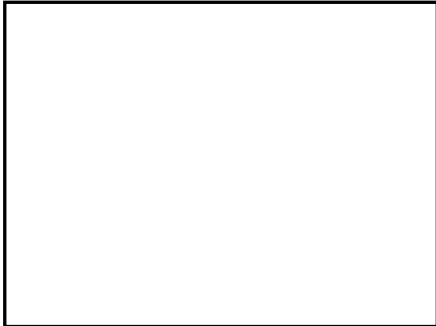


Vcc rising time is 470us



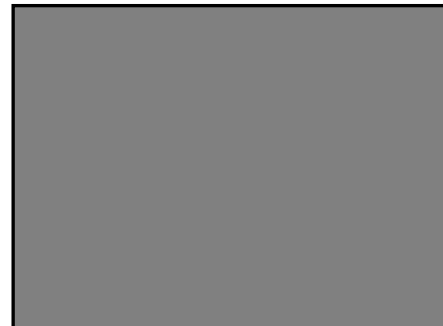
Note (3) The specified power supply current is under the conditions at $V_{cc} = 12\text{ V}$, $T_a = 25 \pm 2\text{ }^\circ\text{C}$, $f_v = 120\text{ Hz}$, whereas a power dissipation check pattern below is displayed.

a. White Pattern



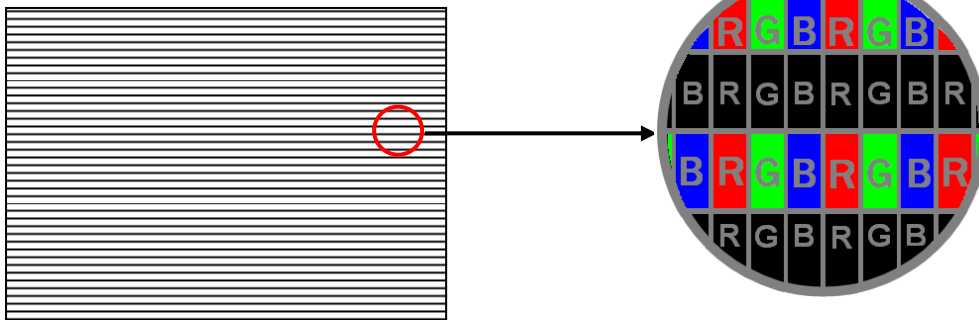
Active Area

b. Black Pattern

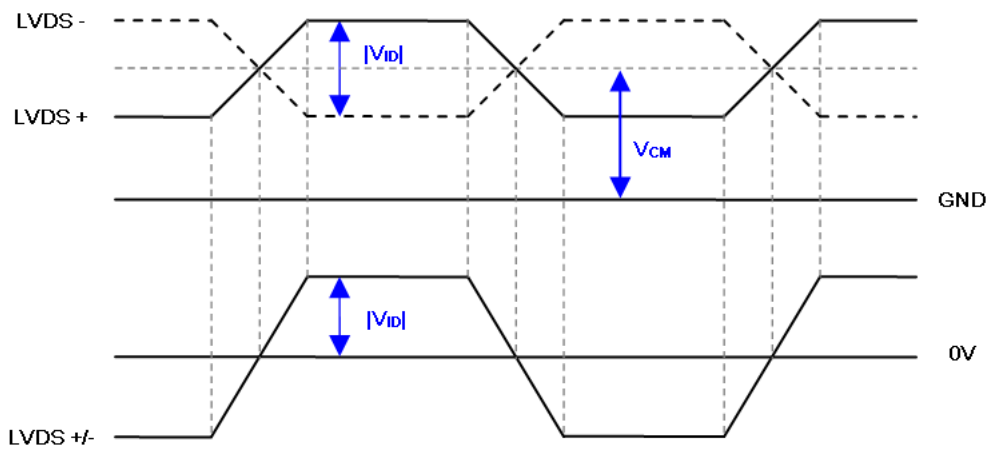


Active Area

c. Horizontal Pattern



Note (4) The LVDS input characteristics are as follows:



3.2 BACKLIGHT UNIT

3.2.1 CCFL (Cold Cathode Fluorescent Lamp) CHARACTERISTICS (Ta = 25 ± 2 °C)

Parameter	Symbol	Value			Unit	Note
		Min.	Typ.	Max.		
Lamp Input Voltage	V _L	-	1440	-	V _{RMS}	-
Lamp Current	I _L	4.5	5.0	5.5	mA _{RMS}	(1)
Lamp Turn On Voltage	V _S	-	-	3155	V _{RMS}	(2), Ta = 0 °C
		-	-	2425	V _{RMS}	(2), Ta = 25 °C
Operating Frequency	F _L	30	55	80	KHz	(3)
Lamp Life Time	L _{BL}	50,000	-	-	Hrs	(4)

3.2.2 INVERTER CHARACTERISTICS (Ta = 25 ± 2 °C)

Parameter	Symbol	Value			Unit	Note
		Min.	Typ.	Max.		
Total Power Consumption	P ₂₅₅	-	160	175	W	(5) ,(6) I _L =5.0mA
Power Supply Voltage	V _{BL}	22.8	24	25.2	V _{DC}	
Supply Voltage Difference	V _D	-	-	1	V _{DC}	(7)
Power Supply Current	I _{BL}	-	6.67	7.3	A	Non Dimming
Input Ripple Noise	-	-	-	912	mV _{P-P}	V _{BL} =22.8V
Oscillating Frequency	F _W	52	55	58	kHz	(3)
Dimming frequency	F _B	150	160	170	Hz	
Minimum Duty Ratio	D _{MIN}	-	20	-	%	

Note (1) Lamp current is measured by utilizing AC current probe and its value is average by measuring master and slave board.

Note (2) The lamp starting voltage V_S should be applied to the lamp for more than 1 second after startup. Otherwise the lamp may not be turned on.

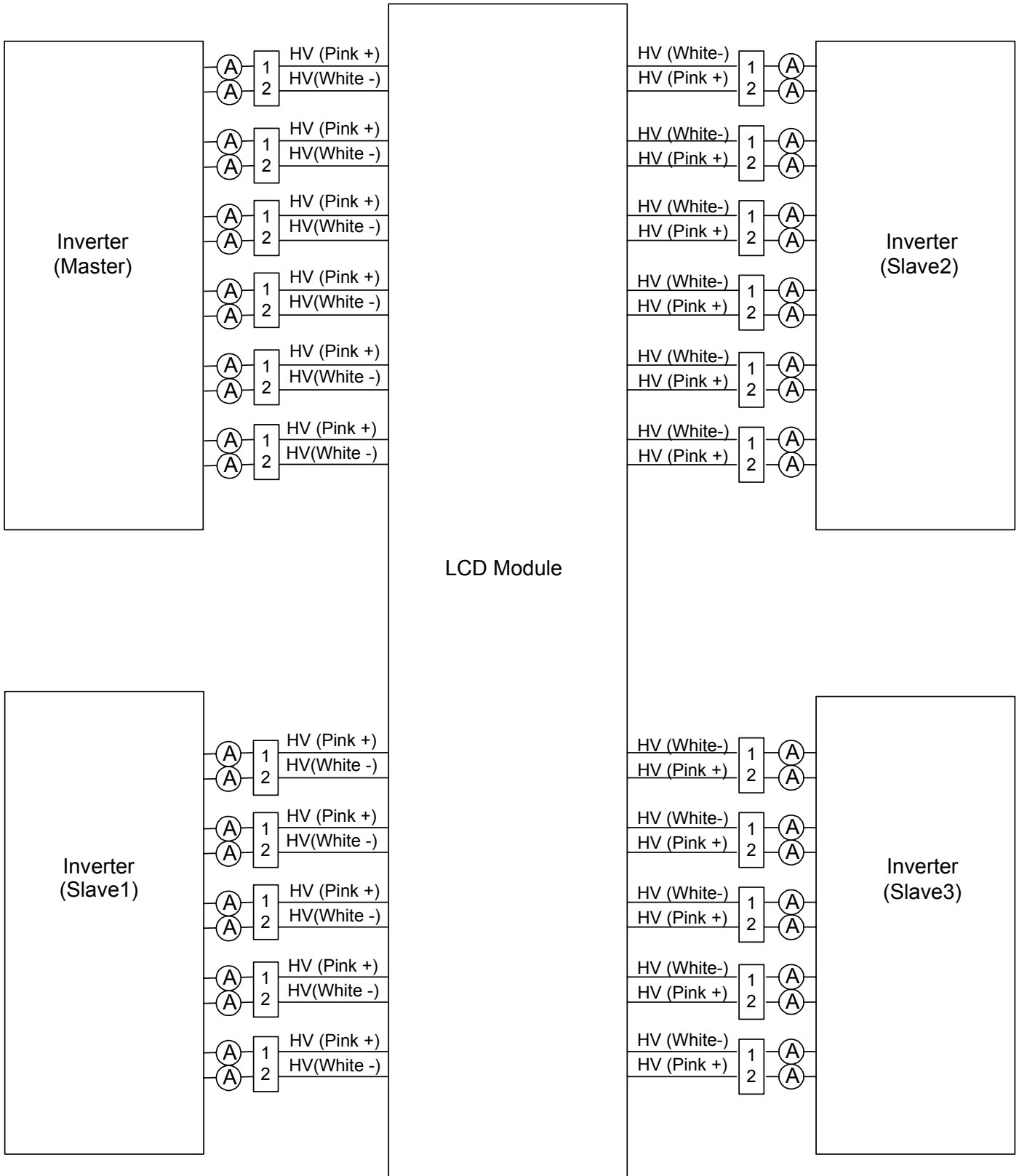
Note (3) The lamp frequency may produce interference with horizontal synchronous frequency of the display input signals, and it may result in line flow on the display. In order to avoid interference, the lamp frequency should be detached from the horizontal synchronous frequency and its harmonics as far as possible.

Note (4) The life time of a lamp is defined as when the brightness is larger than 50% of its original value and the effective discharge length is longer than 80% of its original length (Effective discharge length is defined as an area that has equal to or more than 70% brightness compared to the brightness at the center point of lamp.) as the time in which it continues to operate under the condition at Ta = 25 ±2°C and I_L = 4.5~ 5.5mA_{RMS}.

Note (5) The power supply capacity should be higher than the total inverter power consumption P_{BL}. Since the pulse width modulation (PWM) mode was applied for backlight dimming, the driving current changed as PWM duty on and off. The transient response of power supply should be considered for the changing loading when inverter dimming.

Note (6) The measurement condition of Max. value is based on 54.6" backlight unit under input voltage 24V, average lamp current 5.3mA and lighting 30 minutes later.

Note (7) The voltage difference of power supply voltage (V_{BL}) between Master and Slave board could not over 1V.



3.2.3 INVERTER INTERFACE CHARACTERISTICS

Parameter		Symbol	Test Condition	Value			Unit	Note
				Min.	Typ.	Max.		
On/Off Control Voltage	ON	V_{BLON}	—	2.0	—	5.0	V	
	OFF		—	0	—	0.8	V	
Internal PWM Control Voltage	MAX	V_{IPWM}	—	3.15	—	5.0	V	Maximum duty ratio
	MIN		—	—	0	—	V	Minimum duty ratio
External PWM Control Voltage	HI	V_{EPWM}	—	2.0	—	5.0	V	Duty on
	LO		—	0	—	0.8	V	Duty off
Status Signal	HI	Status	—	3.0	3.3	3.6	V	Normal
	LO		—	0	—	0.8	V	Abnormal
VBL Rising Time		$Tr1$	—	30	—	—	ms	10%-90% V_{BL}
VBL Falling Time		$Tf1$	—	30	—	—	ms	
Control Signal Rising Time		Tr	—	—	—	100	ms	
Control Signal Falling Time		Tf	—	—	—	100	ms	
PWM Signal Rising Time		T_{PWMR}	—	—	—	50	us	
PWM Signal Falling Time		T_{PWMF}	—	—	—	50	us	
Input impedance		R_{IN}	—	1	—	—	MΩ	
PWM Delay Time		T_{PWM}	—	100	—	—	ms	
BLON Delay Time		T_{on}	—	300	—	—	ms	
		T_{on1}	—	300	—	—	ms	
BLON Off Time		T_{off}	—	300	—	—	ms	

Note (1) The Dimming signal should be valid before backlight turns on by BLON signal. It is inhibited to change the internal/external PWM signal during backlight turn on period.

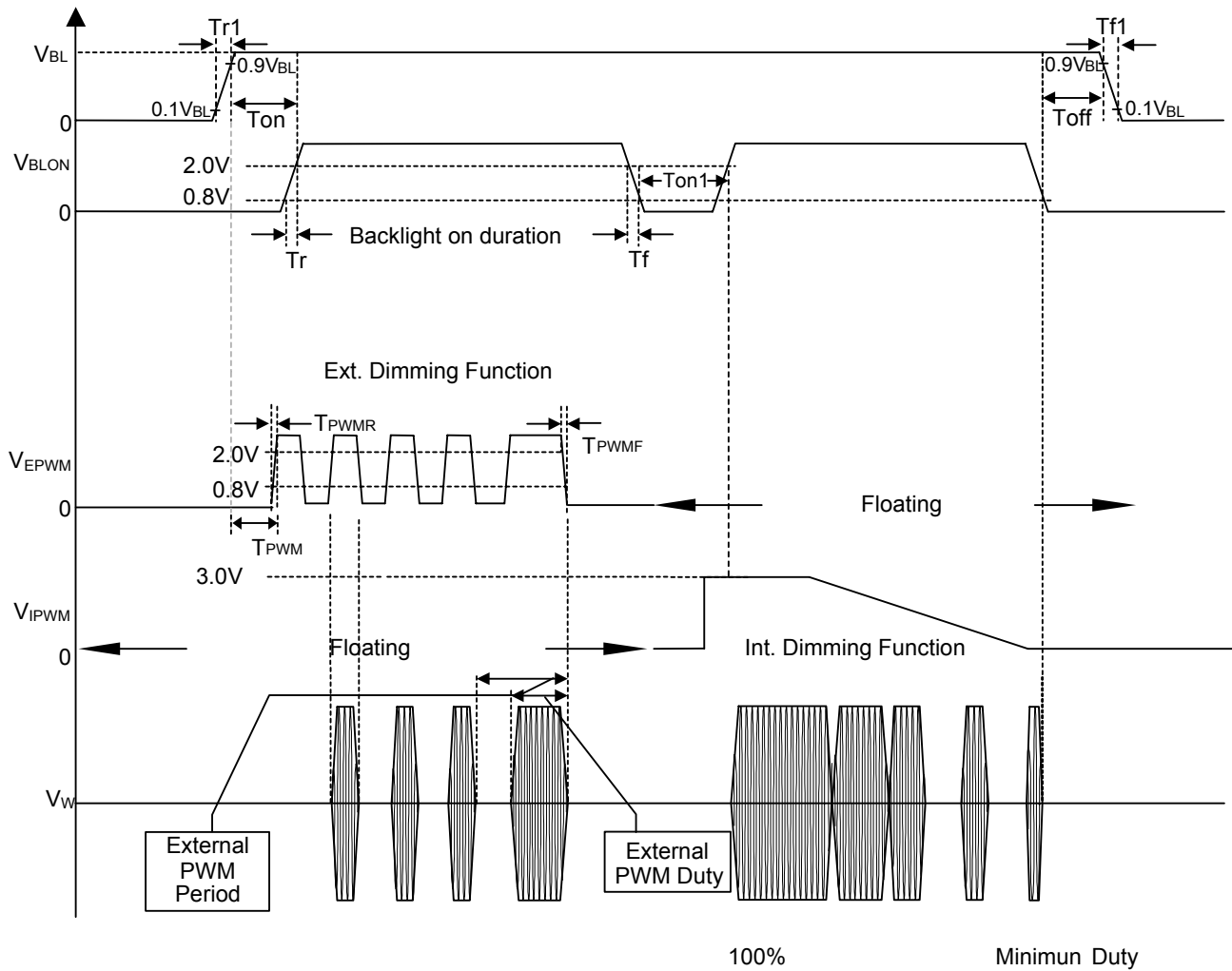
Note (2) The power sequence and control signal timing are shown in the following figure. For a certain reason, the inverter has a possibility to be damaged with wrong power sequence and control signal timing.

Note (3) While system is turned ON or OFF, the power sequences must follow as below descriptions:

Turn ON sequence: VBL → PWM signal → BLON

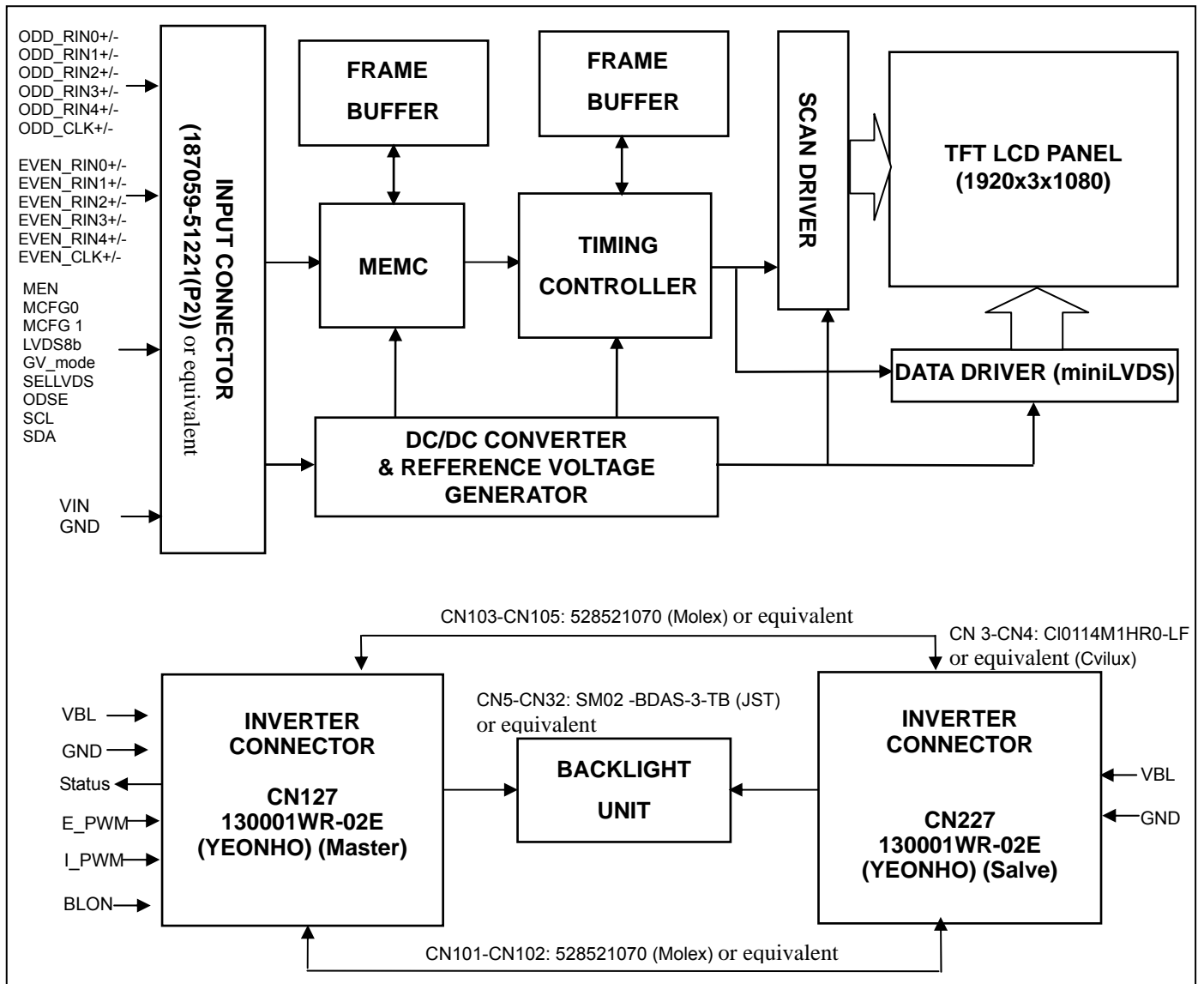
Turn OFF sequence: BLOFF → PWM signal → VBL

Note (4) In order to avoid the abnormal phenomenon at dimming condition, skipped range of V_{IPWM} 2.85~3.15V is suggested.



4. BLOCK DIAGRAM OF INTERFACE

4.1 TFT LCD MODULE



5 .INPUT TERMINAL PIN ASSIGNMENT

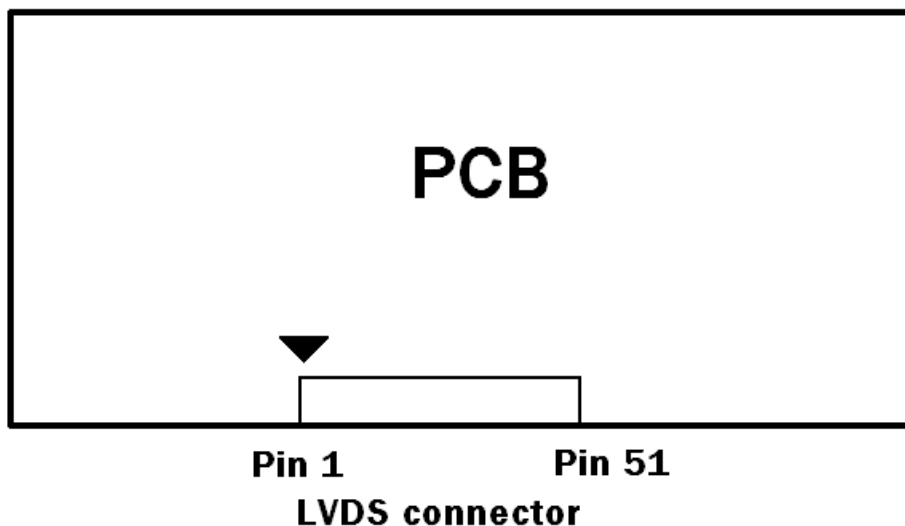
5.1 TFT LCD Module

CNF1 Connector Part No.: P2 (禾昌) 187059-51221 or equivalent.

Pin	Name	Description	Note
1	RPF	Rotation Panel Function (default low)	8
2	MEN	MEMC function selection	5
3	MCFG0	MEMC function selection	5
4	MCFG1	MEMC function selection	5
5	LVDS8b	8bit/10bit LVDS input selection	6
6	GV_mode	Graphic / Video mode selection	7
7	SELLVDS	LVDS data format Selection	3
8	SCL	I2C CLK Signal	
9	SDA.	I2C Data Signal	
10	ODSEL	Overdrive Lookup Table Selection	4
11	GND	Ground	
12	ERX0-	2nd pixel Negative LVDS differential data input. Channel 0	
13	ERX0+	2nd pixel Positive LVDS differential data input. Channel 0	
14	ERX1-	2nd pixel Negative LVDS differential data input. Channel 1	
15	ERX1+	2nd pixel Positive LVDS differential data input. Channel 1	
16	ERX2-	2nd pixel Negative LVDS differential data input. Channel 2	
17	ERX2+	2nd pixel Positive LVDS differential data input. Channel 2	
18	GND	Ground	
19	ECLK-	2nd pixel Negative LVDS differential clock input.	
20	ECLK+	2nd pixel Positive LVDS differential clock input.	
21	GND	Ground	
22	ERX3-	2nd pixel Negative LVDS differential data input. Channel 3	
23	ERX3+	2nd pixel Positive LVDS differential data input. Channel 3	
24	ERX4-	2nd pixel Negative LVDS differential data input. Channel 4	
25	ERX4+	2nd pixel Positive LVDS differential data input. Channel 4	
26	N.C.	No Connection	2
27	N.C.	No Connection	2
28	ORX0-	1st pixel Negative LVDS differential data input. Channel 0	
29	ORX0+	1st pixel Positive LVDS differential data input. Channel 0	
30	ORX1-	1st pixel Negative LVDS differential data input. Channel 1	
31	ORX1+	1st pixel Positive LVDS differential data input. Channel 1	
32	ORX2-	1st pixel Negative LVDS differential data input. Channel 2	
33	ORX2+	1st pixel Positive LVDS differential data input. Channel 2	
34	GND	Ground	
35	OCLK-	1st pixel Negative LVDS differential clock input.	
36	OCLK+	1st pixel Positive LVDS differential clock input.	
37	GND	Ground	
38	ORX3-	1st pixel Negative LVDS differential data input. Channel 3	
39	ORX3+	1st pixel Positive LVDS differential data input. Channel 3	

40	ORX4-	1st pixel Negative LVDS differential data input. Channel 4	
41	ORX4+	1st pixel Positive LVDS differential data input. Channel 4	
42	N.C.	No Connection	2
43	N.C.	No Connection	2
44	GND	Ground	
45	GND	Ground	
46	GND	Ground	
47	N.C.	No Connection	2
48	VCC	+12V power supply	
49	VCC	+12V power supply	
50	VCC	+12V power supply	
51	VCC	+12V power supply	

Note (1) LVDS connector pin order defined as follows



Note (2) Reserved for internal use. Please leave it open

Note (3)

SELLVDS	Mode
L(default)	VESA
H	JEIDA

L: Connect to GND, H: Connect to +3.3V

Note (4) Overdrive lookup table selection. The overdrive lookup table should be selected in accordance with the frame rate to optimize image quality.

ODSEL	Description
L(default)	Lookup table was optimized for 60 Hz frame rate input.
H	Lookup table was optimized for 50 Hz frame rate input.

L: Connect to GND, H: Connect to +3.3V

Note (5) Motion Engine (ME) Level & Demo Function Table

Motion engine level must be adjusted after video mode is selected (or entered).

Adjusting the motion engine level in graphic mode has no effect

		MEN	MCFG1	MCFG0	Notes		
Blanking	Blanking disable	0	0	0	(a)		
	Auto blanking	0	0	1	(b)		
	Blanking enable	0	1	0	(c)		
Effect of ME →					De blur	De judder	Halo
Demo mode (d)		0	1	1	Demo Window		
ME Level	Strong	1	0	0	Enable	Strong	Strong
	Medium(Default)	1	0	1	Enable	Normal	Normal
	Weak	1	1	0	Enable	Weak	×
	OFF	1	1	1	×	×	×
		(e) (f) (g)					

(a) Module re-starts processing video signals from Frontend scaler control board.

(b) During sync unstable period such as format change, 60Hz <-> 50Hz .

MCFG0 can be used to insert blanking of 500ms. This signal is toggled.

(c) Module continues to insert blanking until blanking disable signal is received from frontend scaler board.

(d) Demo window mode: Demo Window appears to the left half of display area. Left side with frame is 120Hz with MEMC, and right side is 120Hz w/o motion compensation.

(e) GPIO (General Purpose I/O) sequence of ME Level: (1) MEN; (2) MCFG1; (3) MCFG0.

GPIO sequence of Blanking Enable, Blanking Disable and Demo window: (1) MCFG1; (2) MCFG0; (3) MEN.

(f) Each scaler command must be maintained the same voltage level at least 100ms.

(g) 0 : Connect to GND, 1 : +3.3V

Note (6) 8bit/10bit LVDS input selection

LVDS8b	Bit depth
H(default)	8bit
L	10bit

L : Connect to GND, H : Connect to +3.3V

Note (7) Graphic / Video mode selection

There is no prohibited time period for switching between Graphic mode and Video mode.

When this switching signal is input, LCD will be reset and will re-start selected mode.

GV_mode	Mode select	MEMC ON/OFF
H(default)	Graphic mode	MEMC OFF
L	Video mode	MEMC ON

L : Connect to GND, H : Connect to +3.3V

Note (8)

Rotation	Mode
L(default)	Normal Display
H	Rotation Display

L: Connect to GND, H: Connect to +3.3V

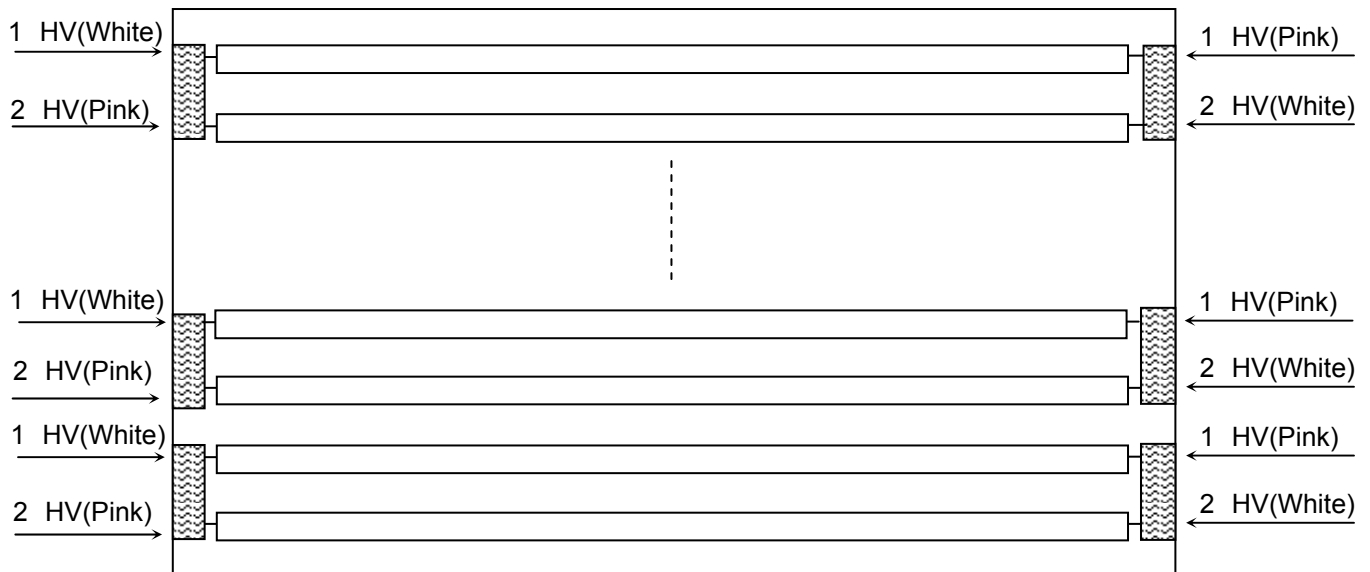
5.2 BACKLIGHT UNIT

The pin configuration for the housing and the leader wire is shown in the table below.

CN101-CN108: CP042ESFA00 (Cvilux)

Pin	Name	Description	Wire Color
1	HV	High Voltage	Pink
2	HV	High Voltage	White

Note (1) The backlight interface housing for high voltage side is a model CP042ESFA00, manufactured by Cvilux. The mating header on inverter part number is CP042EP1MFB-LF (Cvilux)



5.3 INVERTER UNIT

CN1: CI0114M1HR0-LF (Cvilux)

Pin №	Symbol	Feature
1	VBL	+24V
2		
3		
4		
5		
6	GND	GND
7		
8		
9		
10		
11	Status (Signal Output Pin)	Normal (3.3V) Abnormal (GND)
12	E_PWM	External PWM Control Signal
13	I_PWM	Internal PWM Control Signal
14	BLON	BL ON/OFF

Note (1) PIN 12:External PWM Control (Use Pin 12): Pin 13 must open.

Note (2) PIN 13:Internal PWM Control (Use Pin 13): Pin 12 must open.

Note (3) Pin 12(E_PWM) and Pin 13(I_PWM) can't open in same period.

CN2-CN4: CI0112M1HR0-LF (Cvilux)

Pin No	Symbol	Feature
1	VBL	+24V
2		
3		
4		
5		
6	GND	GND
7		
8		
9		
10		
11	NC	NC
12	NC	NC

CN5-CN32: SM02 -BDAS-3-TB (JST)

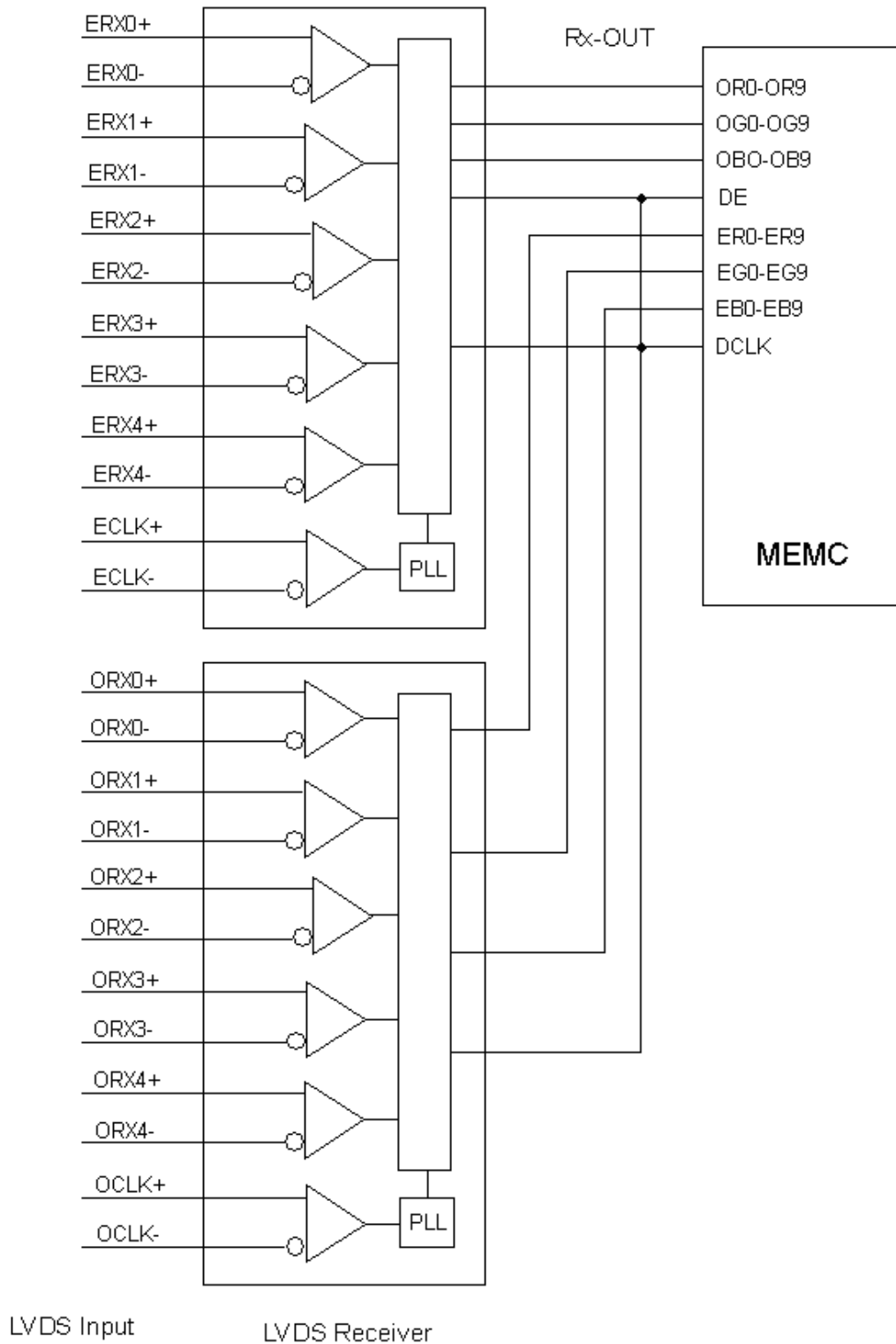
Pin No.	Symbol	Description
1	CCFL	CCFL high voltage
2	CCFL	CCFL high voltage

CN103-CN105: 528521070 (Molex)

Pin No.	Symbol	Description
1	Control Signal	Board to Board
2		Board to Board
3		Board to Board
4		Board to Board
5		Board to Board
6		Board to Board
7		Board to Board
8		Board to Board
9		Board to Board
10		Board to Board

Note (1) Floating of any control signal is not allowed.

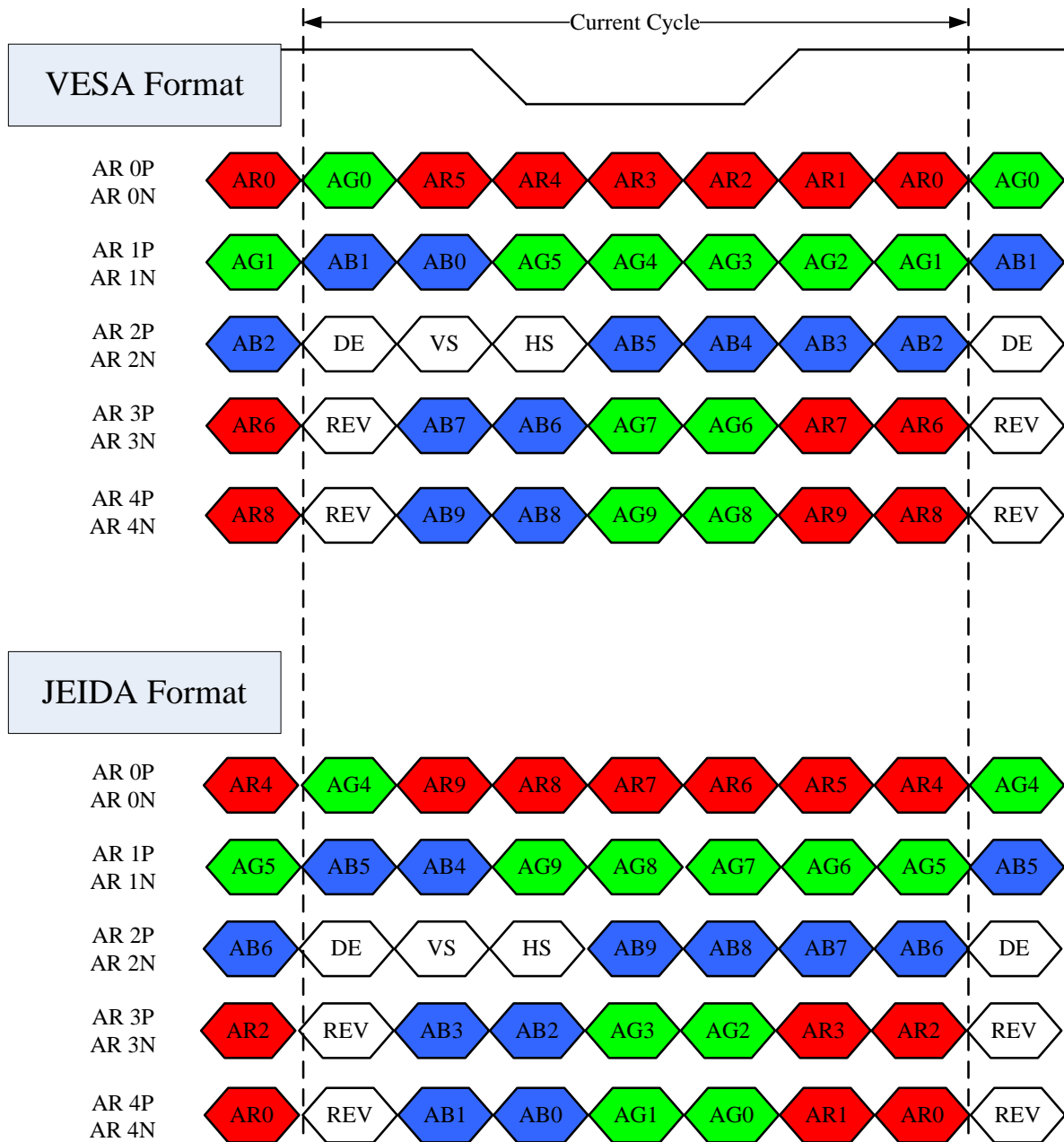
5.4 BLOCK DIAGRAM OF INTERFACE



5.5 LVDS INTERFACE

VESA Format : SELLVDS = L or Open

JEIDA Format : SELLVDS = H



AR0~AR9: First Pixel R Data (9; MSB, 0; LSB)

AG0~AG9: First Pixel G Data (9; MSB, 0; LSB)

AB0~AB9: First Pixel B Data (9; MSB, 0; LSB)

DE : Data enable signal

DCLK : Data clock signal

RSVD : Reserved

6. INTERFACE TIMING

6.1 INPUT SIGNAL TIMING SPECIFICATIONS

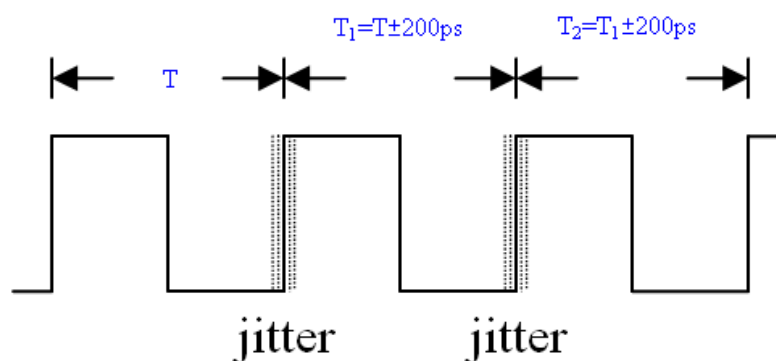
The input signal timing specifications are shown as the following table and timing diagram.

Signal	Item	Symbol	Min.	Typ.	Max.	Unit	Note
LVDS Receiver Clock	Frequency	F_{clkin} (=1/TC)	60	74.25	78	MHz	
	Input cycle to cycle jitter	T_{rc1}	—	—	200	ps	(2)
	Spread spectrum modulation range	F_{clkin_mod}	$F_{clkin}-2\%$	—	$F_{clkin}+2\%$	MHz	(3)
	Spread spectrum modulation frequency	F_{SSM}	30	—	50	KHz	
LVDS Receiver Data	Setup Time	T_{lvsu}	600	—	—	ps	
	Hold Time	T_{lvhd}	600	—	—	ps	
Vertical Active Display Term	Frame Rate	F_{r5}	47	50	53	Hz	
		F_{r6}	57	60	62	Hz	
	Total	T_v	1110	1125	1135	Th	$T_v=T_{vd}+T_{vb}$
	Display	T_{vd}	1080	1080	1080	Th	—
	Blank	T_{vb}	30	45	55	Th	—
Horizontal Active Display Term	Total	T_h	1050	1100	1150	Tc	$T_h=T_{hd}+T_{hb}$
	Display	T_{hd}	960	960	960	Tc	—
	Blank	T_{hb}	90	140	190	Tc	—

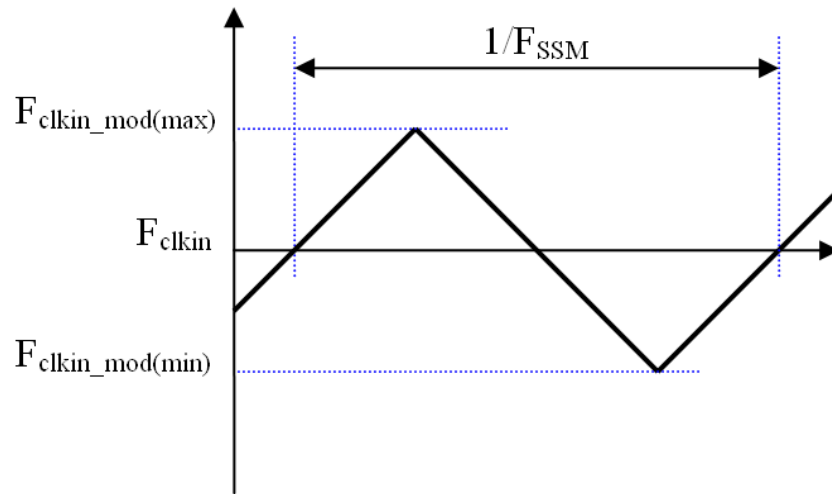
Note (1) Please make sure the range of frame rate has follow the below equation :

$$Fr(max) \geq F_{clkin} / T_v \times T_h \leq Fr(min)$$

Note (2) The input clock cycle-to-cycle jitter is defined as below figures. $Trc1 = |T_1 - T_2|$

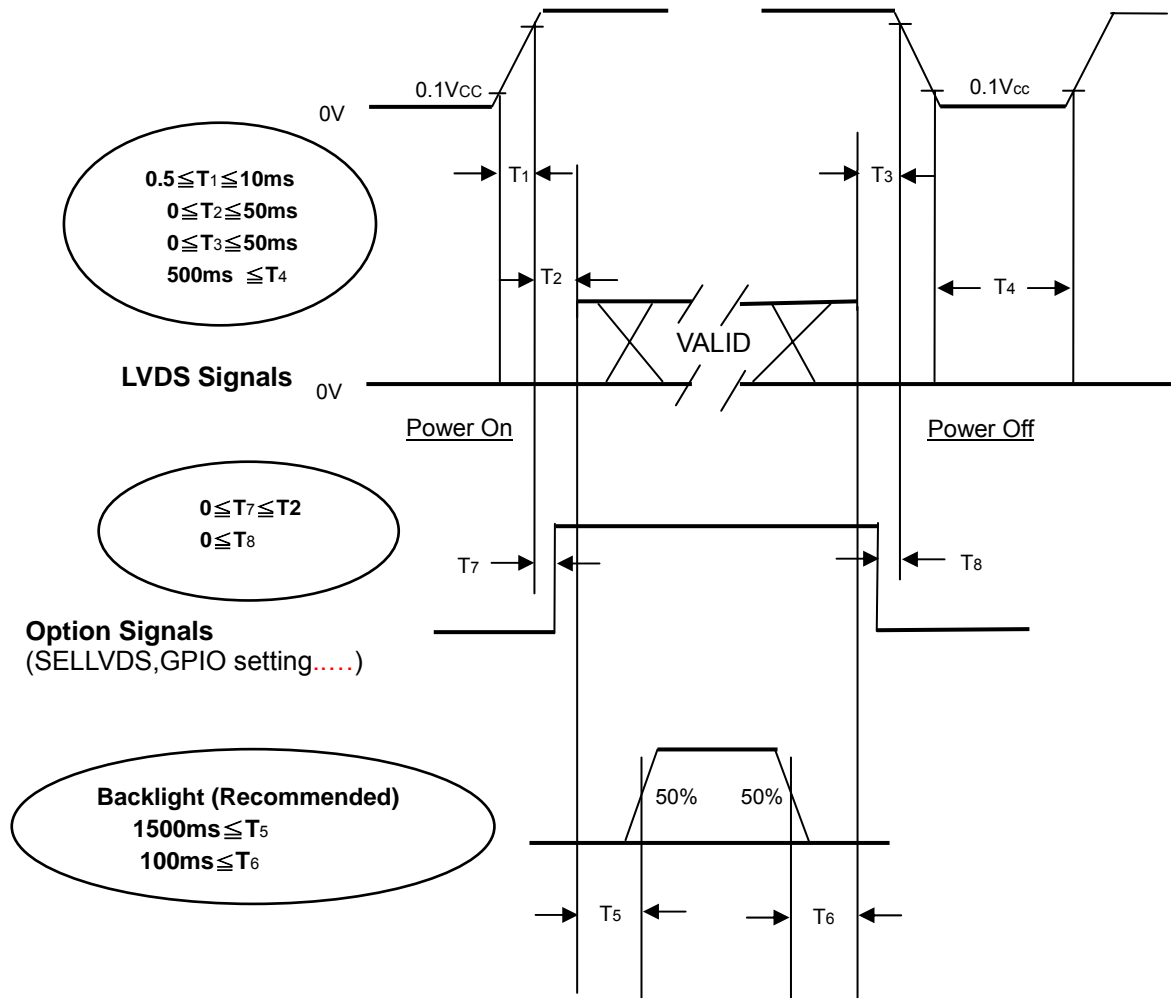


Note (3) The SSCG (Spread spectrum clock generator) is defined as below figures.



6.2 POWER ON/OFF SEQUENCE

To prevent a latch-up or DC operation of LCD module, the power on/off sequence should follow the diagram below.



Power ON/OFF Sequence

Note:

- (1) The supply voltage of the external system for the module input should follow the definition of V_{CC}.
- (2) Apply the lamp voltage within the LCD operation range. When the backlight turns on before the LCD operation or the LCD turns off before the backlight turns off, the display may momentarily become abnormal screen.
- (3) In case of V_{CC} is in off level, please keep the level of input signals on the low or high impedance.
- (4) T₄ should be measured after the module has been fully discharged between power off and on period.
- (5) Interface signal shall not be kept at high impedance when the power is on.

7. OPTICAL CHARACTERISTICS

7.1 TEST CONDITIONS

Item	Symbol	Value	Unit
Ambient Temperature	Ta	25±2	°C
Ambient Humidity	Ha	50±10	%RH
Supply Voltage	V _{CC}	12V	V
Input Signal	According to typical value in "3. ELECTRICAL CHARACTERISTICS"		
Lamp Current	I _L	5.0±0.5	mA
Oscillating Frequency (Inverter)	F _W	55±3	KHz
Vertical Frame Rate	Fr	120	Hz

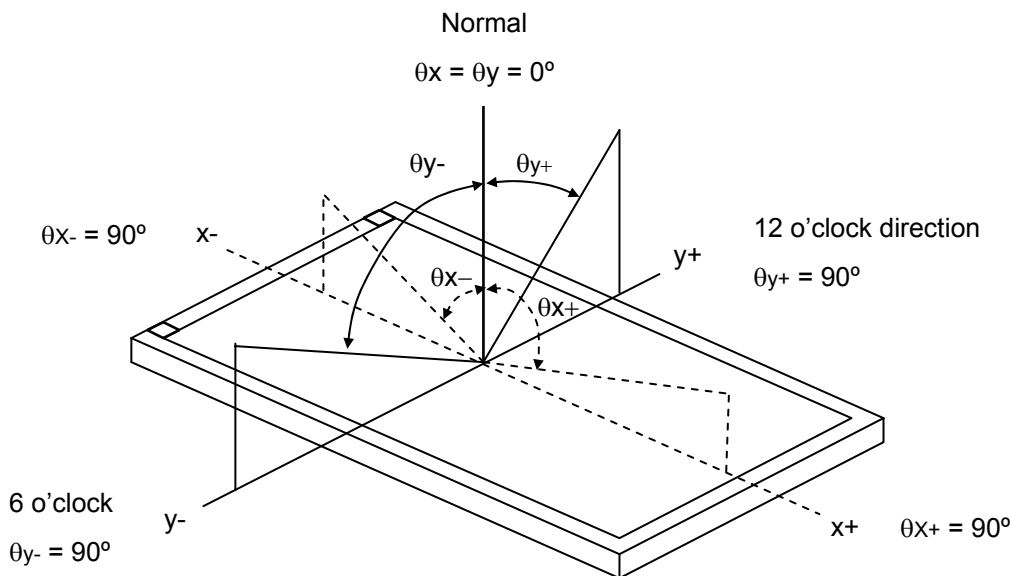
7.2 OPTICAL SPECIFICATIONS

The relative measurement methods of optical characteristics are shown in 7.2. The following items should be measured under the test conditions described in 7.1 and stable environment shown in Note (6).

Item		Symbol	Condition	Min.	Typ.	Max.	Unit	Note	
Contrast Ratio		CR	$\theta_x=0^\circ, \theta_y=0^\circ$ Viewing angle at normal direction	3000	4000	-	-	Note (2)	
Response Time		Gray to gray		-	4.5	9	ms	Note (3)	
Center Luminance of White		L _C		400	500	-	cd/m ²	Note (4)	
White Variation		δW		-	-	1.3	-	Note (7)	
Cross Talk		CT		-	-	4	%	Note (5)	
Color Chromaticity	Red	R _x		Typ.- 0.03	Typ.+ 0.03	0.645	-	-	Note (6)
		R _y				0.325			
	Green	G _x				0.296			
		G _y				0.604			
	Blue	B _x				0.149			
		B _y	0.060						
	White	W _x	0.280						
		W _y	0.290						
Color Gamut				72	-	%	NTSC		
Viewing Angle	Horizontal	θ_{x+}	CR≥20	80	88	-	Deg.	Note (1)	
		θ_{x-}		80	88	-			
	Vertical	θ_{y+}		80	88	-			
		θ_{y-}		80	88	-			

Note (1) Definition of Viewing Angle (θ_x, θ_y):

Viewing angles are measured by Autronic Conoscope Cono-80



Note (2) Definition of Contrast Ratio (CR):

The contrast ratio can be calculated by the following expression.

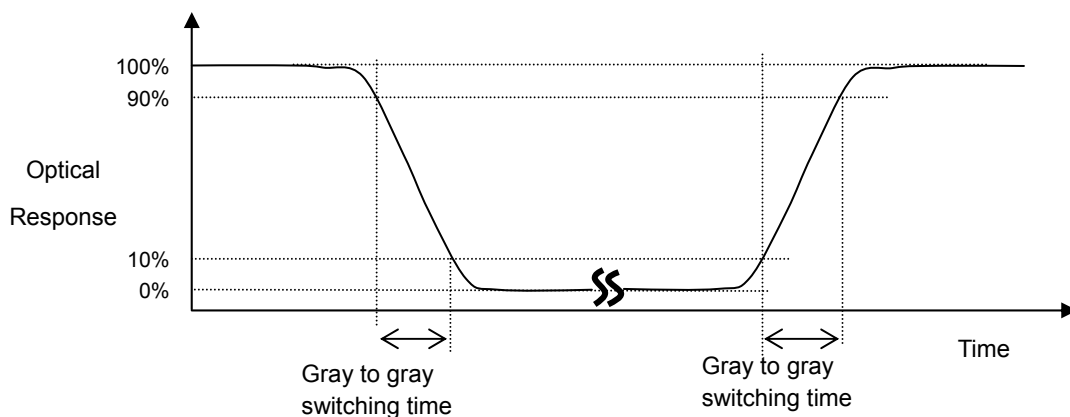
$$\text{Contrast Ratio (CR)} = L_{1023} / L_0$$

L1023: Luminance of gray level 1023

L 0: Luminance of gray level 0

CR = CR (X), where CR (X) is corresponding to the Contrast Ratio of the point X at the figure in Note (7)

Note (3) Definition of Gray to Gray Switching Time:



The driving signal means the signal of gray level 0, 127, 255, 383, 511, 639, 767, 895 and 1023.

Gray to gray average time means the average switching time of gray level 0, 127, 255, 383, 511, 639, 767, 895 and 1023 to each other.

Note (4) Definition of Luminance of White (L_C):

Measure the luminance of gray level 1023 at center point.

$L_C = L(5)$, where $L(x)$ is corresponding to the luminance of the point X at the figure in Note (7).

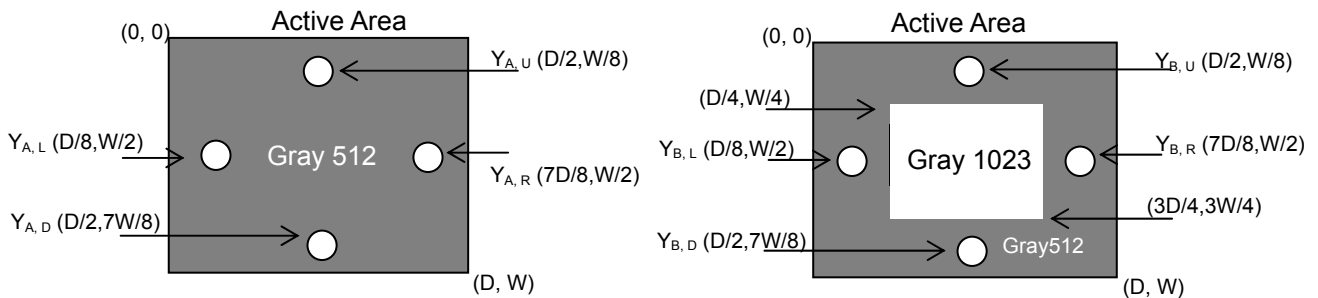
Note (5) Definition of Cross Talk (CT):

$$CT = |Y_B - Y_A| / Y_A \times 100 (\%)$$

Where:

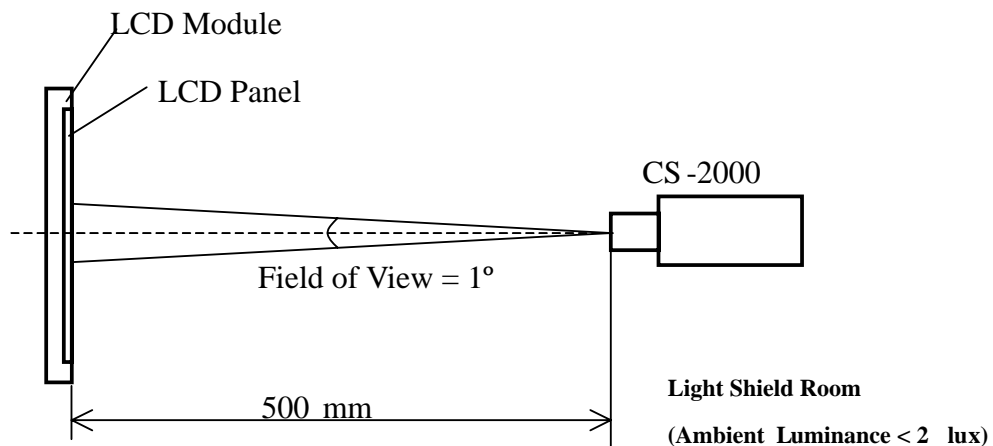
Y_A = Luminance of measured location without gray level 512 pattern (cd/m^2)

Y_B = Luminance of measured location with gray level 512 pattern (cd/m^2)



Note (6) Measurement Setup:

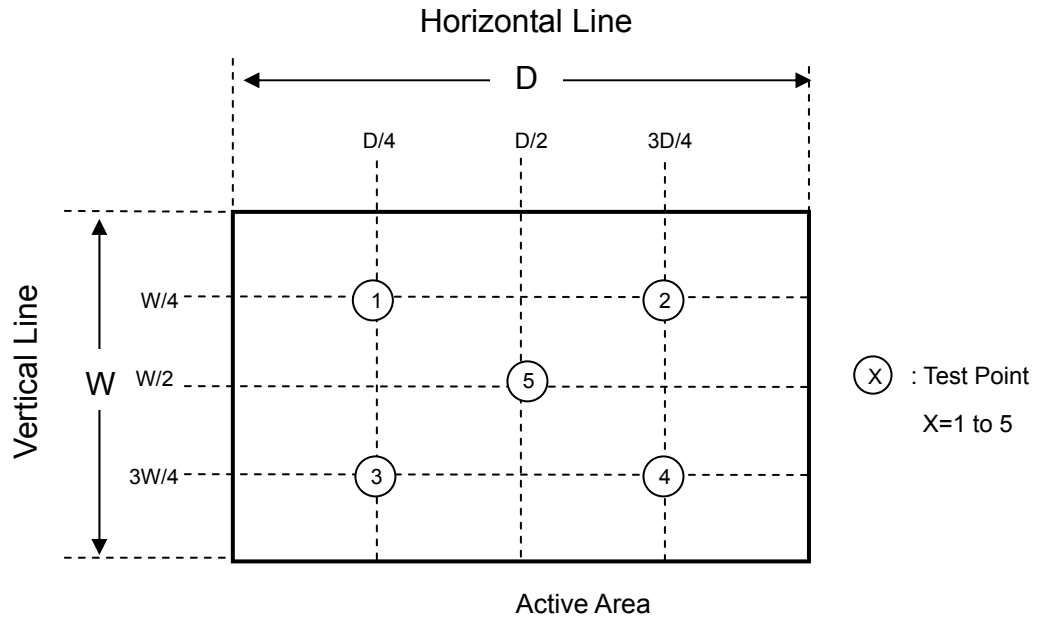
The LCD module should be stabilized at given temperature for 1 hour to avoid abrupt temperature change during measuring. In order to stabilize the luminance, the measurement should be executed after lighting backlight for 1 hour in a windless room.



Note (7) Definition of White Variation (δW):

Measure the luminance of gray level 1023 at 5 points

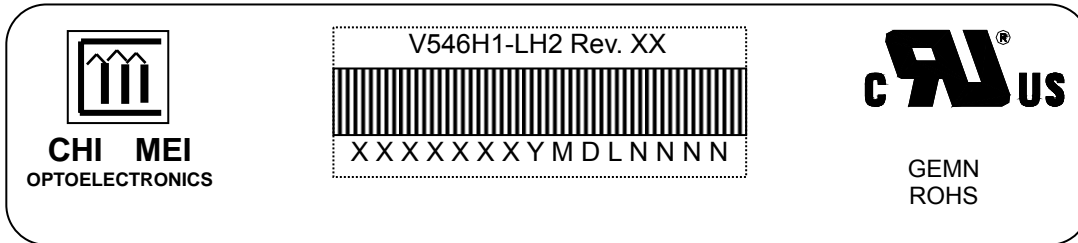
$$\delta W = \text{Maximum [L (1), L (2), L (3), L (4), L (5)]} / \text{Minimum [L (1), L (2), L (3), L (4), L (5)]}$$



8. DEFINITION OF LABELS

8.1 CMO MODULE LABEL

The barcode nameplate is pasted on each module as illustration, and its definitions are as following explanation.



- (a) Model Name: V546H1-LH2
- (b) Revision: Rev. XX, for example: A0, A1... B1, B2... or C1, C2...etc.
- (c) CMO barcode definition:

Serial ID: XX-XX-X-XX-YMD-L-NNNN

Code	Meaning	Description
XX	CMO internal use	-
XX	Revision	Cover all the change
X-XX	CMO internal use	-
YMD	Year, month, day	Year: 2001=1, 2002=2, 2003=3, 2004=4....2010=0,2011=1,2012=2.... Month: Jan. ~ Dec.=1, 2, 3, ~, 9, A, B, C Day: 1 st to 31 st =1, 2, 3, ~, 9, A, B, C, ~, W, X, Y, exclude I, O, and U
L	Product line #	Line 1=1, Line 2=2, Line 3=3, ...
NNNN	Serial number	Manufacturing sequence of product

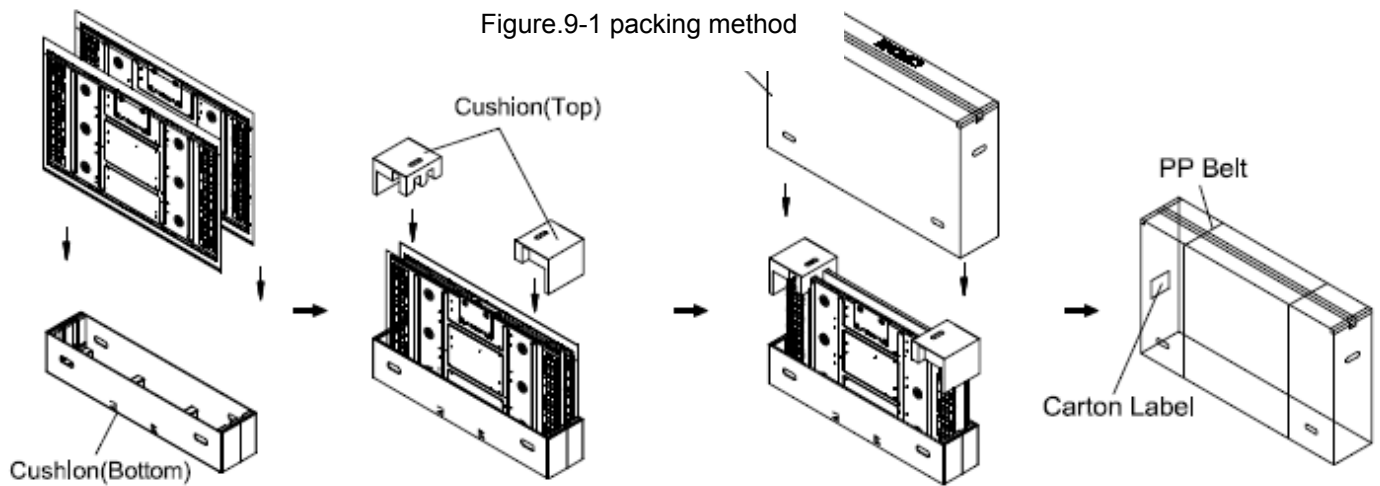
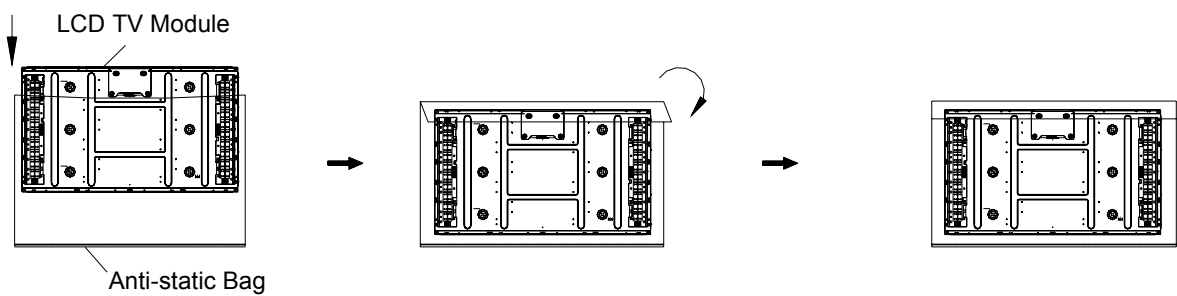
9. PACKING

9.1 PACKING SPECIFICATIONS TYPE I

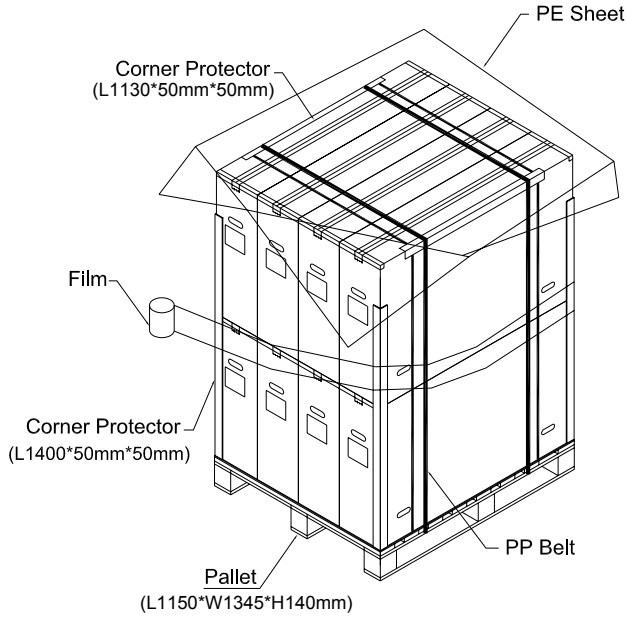
- (1) 2 LCD TV modules / 1 Box
- (2) Box dimensions: 1334(L) X 284 (W) X 856 (H)
- (3) Weight: approximately 46 Kg (2 modules per box)

9.2 PACKING METHOD TYPE I

Figures 9-1 and 9-2 are the packing method



Sea & Land Transportation
Gross : 383Kg



Air Transportation
Gross : 199Kg

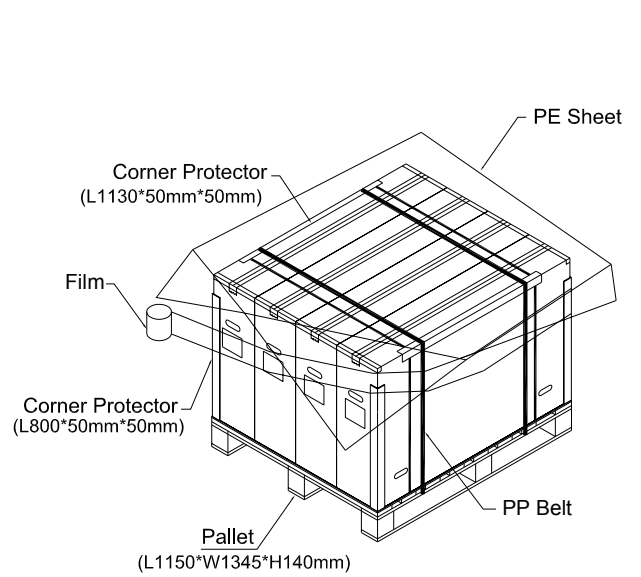


Figure. 9-2 Packing method

10. PRECAUTIONS

10.1 ASSEMBLY AND HANDLING PRECAUTIONS

- (1) Do not apply rough force such as bending or twisting to the module during assembly.
- (2) It is recommended to assemble or to install a module into the user's system in clean working areas. The dust and oil may cause electrical short or worsen the polarizer.
- (3) Do not apply pressure or impulse to the module to prevent the damage of LCD panel and backlight.
- (4) Always follow the correct power-on sequence when the LCD module is turned on. This can prevent the damage and latch-up of the CMOS LSI chips.
- (5) Do not plug in or pull out the I/F connector while the module is in operation.
- (6) Do not disassemble the module.
- (7) Use a soft dry cloth without chemicals for cleaning, because the surface of polarizer is very soft and easily scratched.
- (8) Moisture can easily penetrate into LCD module and may cause the damage during operation.
- (9) High temperature or humidity may deteriorate the performance of LCD module. Please store LCD modules in the specified storage conditions.
- (10) When ambient temperature is lower than 10°C, the display quality might be reduced. For example, the response time will become slow, and the starting voltage of CCFL will be higher than that of room temperature.

10.2 SAFETY PRECAUTIONS

- (1) The startup voltage of a backlight is over 1000 Volts. It may cause an electrical shock while assembling with the inverter. Do not disassemble the module or insert anything into the backlight unit.
- (2) If the liquid crystal material leaks from the panel, it should be kept away from the eyes or mouth. In case of contact with hands, skin or clothes, it has to be washed away thoroughly with soap.
- (3) After the module's end of life, it is not harmful in case of normal operation and storage.

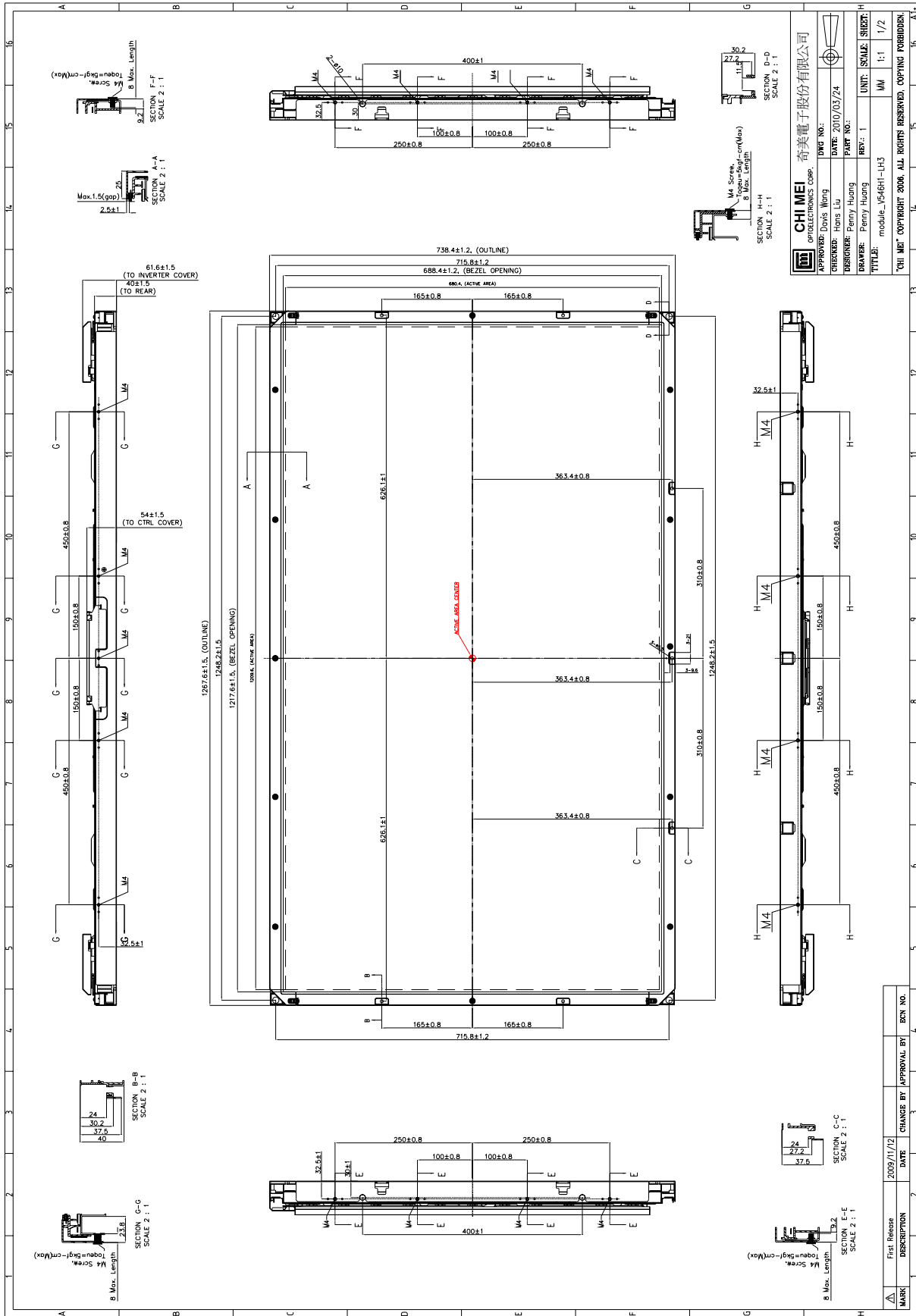
10.3 SAFETY STANDARDS

The LCD module should be certified with safety regulations as follows:

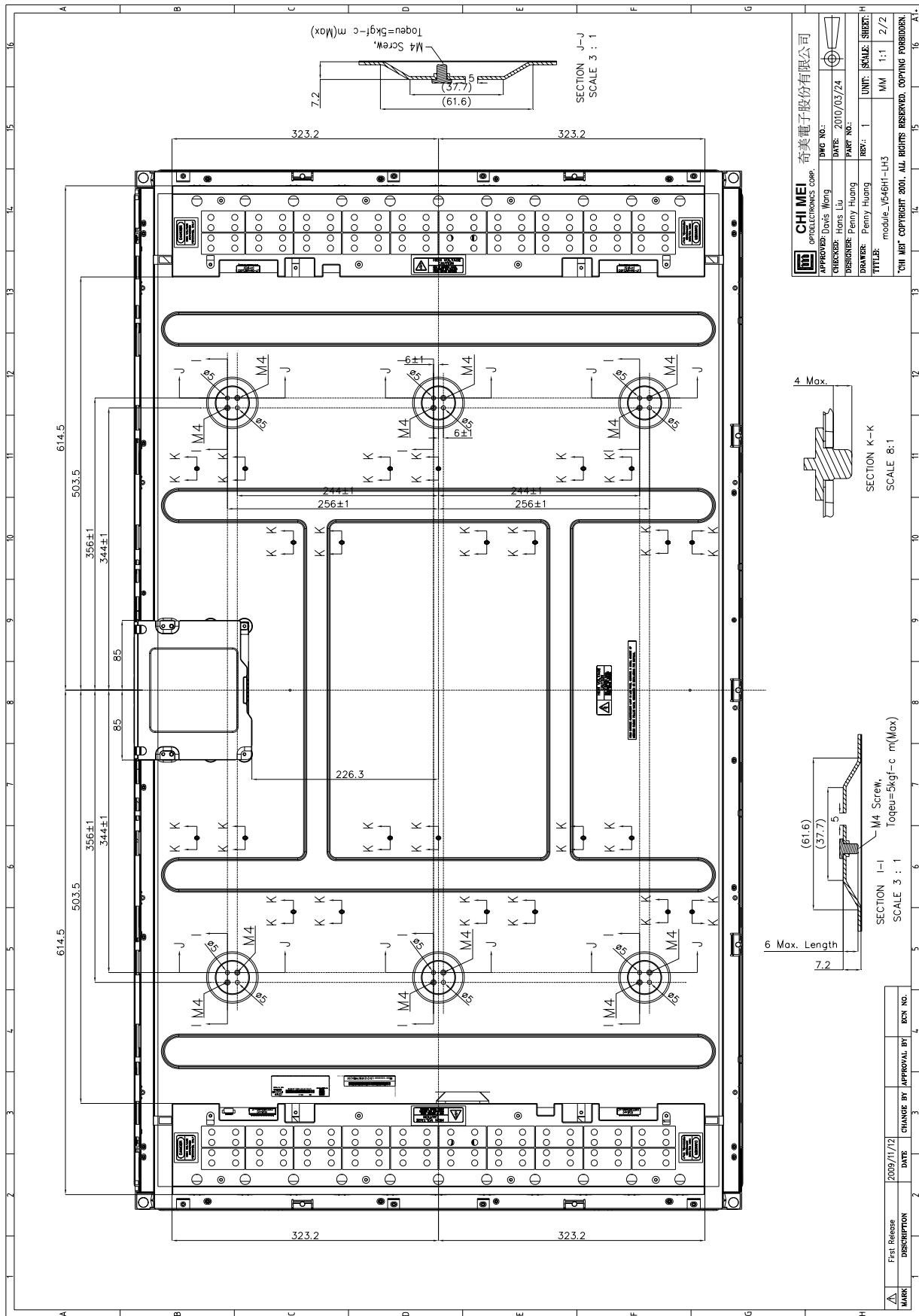
Regulatory	Item	Standard
Information Technology equipment	UL	UL 60950-1:2007
	cUL	CSA C22.2 No. 60950-1-07:2007
	CB	IEC 60950 -1:2005 / EN60905-1: 2006
Audio/Video Apparatus	UL	UL 60065: 2007
	cUL	CAN/CSA C22.2 No.60065-03
	CB	IEC 60065:2001/ EN 60065:2002

If the module displays the same pattern for a long period of time, the phenomenon of image sticking may be occurred.

11. MECHANICAL CHARACTERISTIC



CHIMEI optoelectronics corp.		奇美電子股份有限公司	
APPROVER: Davis Wang	DWG NO.:	DATE: 2010/03/24	
DESIGNER: Hons Lu	PART NO.:		
DRAWER: Penny Huang	PART NO.:		
TITLE: module_V546H1-LH3	UNIT: MM	SCALE: 1:1	SHEET: 1/2
"CHI MEI" COPYRIGHT 2009. ALL RIGHTS RESERVED. COPYING FORBIDDEN.			



Appendix – TWO Wire BUS INTRODUCTION

A.1 PIN ASSIGNMENT

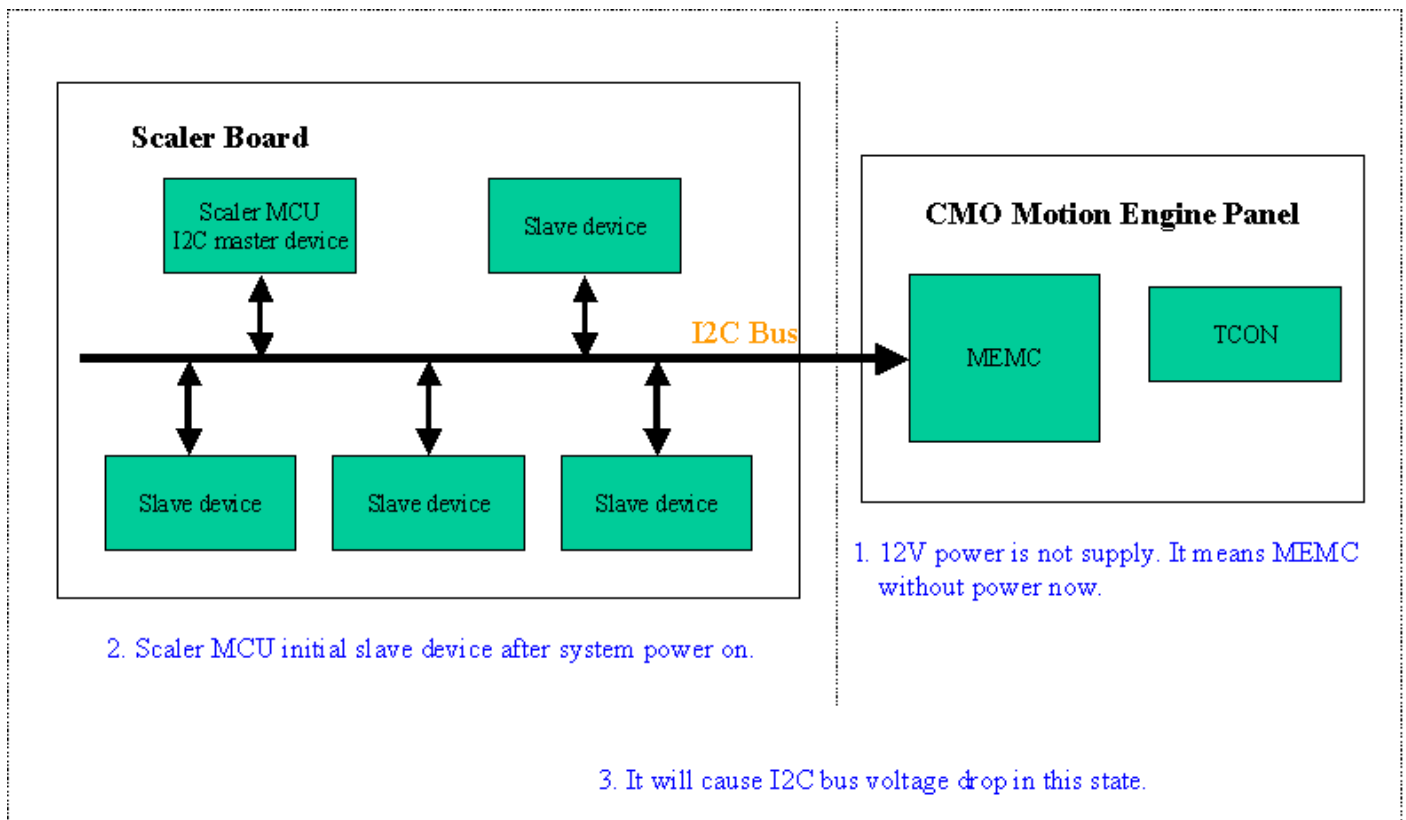
51pins LVDS connector

Pin8: SCL

Pin9: SDA

A.2 I2C BUS APPLICATION NOTE

I2C bus: (The I2C bus must for MEMC only or prevent the I2C bus voltage drop down in initial state)



A.3 TWO WIRE BUS DEVICE ADDRESS

Two wire device address: default is 0x40, 1 byte

Two wire command: the range is 0x00 to 0xFF, 1 byte, see the two wire command table.

Two wire bus format:

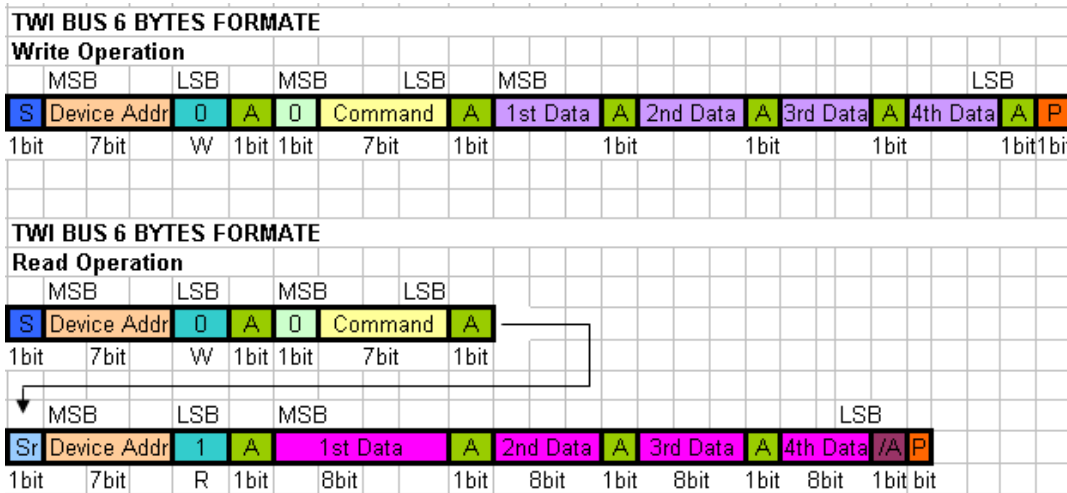
Device Address : 0x40 default								Command							
D7	D6	D5	D4	D3	D2	D1	D0	D7	D6	D5	D4	D3	D2	D1	D0
0	1	0	0	0	0	0	W/R	L	x	x	x	x	x	x	x

- W/R** write : 0; Read : 1
- L** 1 : 1Byte Data Length; 0: 4Byte Data Length
- S** TWI-Bus Start condition from master
- Sr** TWI-Bus Start condition from master
- A** TWI-Bus Acknowledge bit from master
- /A** TWI-Bus Not Acknowledge bit from salve
- P** TWI-Bus Stop condition from master
- Data** TWI Bus Data from master
- Data** TWI Bus Data from salve

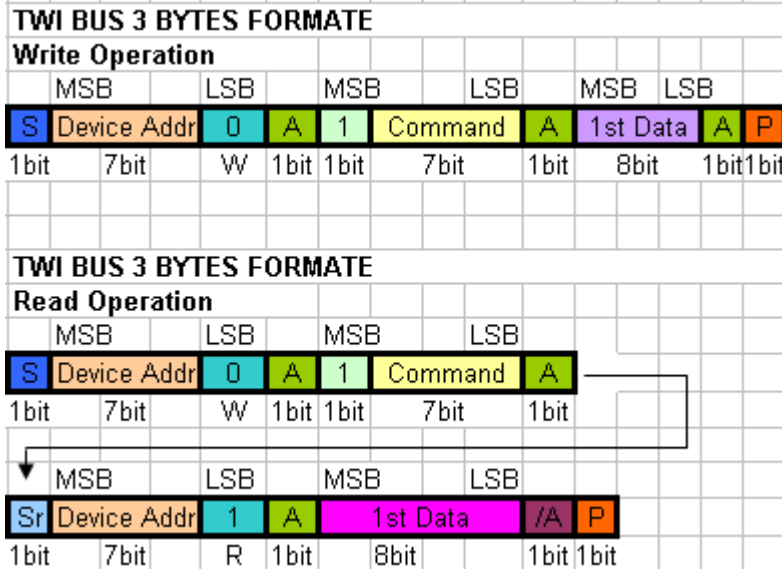
A.4 TWO WAY TO CONTROL THE TWO WIRE BUS

There are two options to control the two wires bus command.

Two wire bus 6 bytes format



Two wire bus 3 bytes format



Note:

A transmission basically consists of a START condition, a SLA+R/W, one or more data packets and a STOP condition. An empty message, consisting of a START followed by a STOP condition, is illegal. Note that the wired-ANDING of the SCL line can be used to implement handshaking between the master and the slave. The slave can extend the SCL low period by pulling the SCL line low. This is useful if the clock speed set up by the master is too fast for the slave, or the slave needs extra time for processing between the data transmissions. The slave extending the SCL low period will not affect the SCL high period, which is determined by the master. As a consequence, the slave can reduce the TWI data transfer speed by prolonging the SCL duty cycle.

A.5 TWO WIRE BUS COMMAND TABLE

There is two wire bus command table.

Command Name		Access Mode	Description
All OSD Protection	0x00	R/W	All OSD Protection
OSD1_Start_Protection	0x01	R/W	OSD1_Start_Protection
OSD2_Start_Protection	0x02	R/W	OSD2_Start_Protection
OSD3_Start_Protection	0x03	R/W	OSD3_Start_Protection
OSD4_Start_Protection	0x04	R/W	OSD4_Start_Protection
OSD1_End_Protection	0x05	R/W	OSD1_End_Protection
OSD2_End_Protection	0x06	R/W	OSD2_End_Protection
OSD3_End_Protection	0x07	R/W	OSD3_End_Protection
OSD4_End_Protection	0x08	R/W	OSD4_End_Protection
Demo Window	0x09	R/W	Demo Window
MEMC Level	0x0A	R/W	MEMC Level
GV Mode	0x0B	R/W	GV Mode
Blanking	0x0C	R/W	Blanking
RPF	0x0D	R/W	RPF

(x1, y1)

OSD protection is rectangle. Please locate the position as below,
(x1-Left, y1-Top) (x2-Right, y2-Bottom)

Motion engine is not active in this blue area.

(x2, y2)

Enable All OSD Protection

AllOSD Protection : 0x00											
4 Bytes Data Length											
1st BYTE DATA	D31	D30	D29	D28	D27	D26	D25	D24	D31~D28	Unused	
	Unused				OSDx				D27	OSD4 flag 1 : On ; 0 : Off	
2nd BYTE DATA	D23	D22	D21	D20	D19	D18	D17	D16	D26	OSD3 flag 1 : On ; 0 : Off	
	Unused								D25	OSD2 flag 1 : On ; 0 : Off	
3rd BYTE DATA	D15	D14	D13	D12	D11	D10	D9	D8	D24	OSD1 flag 1 : On ; 0 : Off	
	Unused								D23~D0	Unused	
4th BYTE DATA	D7	D6	D5	D4	D3	D2	D1	D0			
	Unused										
AllOSD Protection : 0x80											
1 Byte Data Length											
1st BYTE DATA	D7	D6	D5	D4	D3	D2	D1	D0	D7~D4	Unused	
	Unused				OSDx				D3	OSD4 flag 1 : On ; 0 : Off	
									D2	OSD3 flag 1 : On ; 0 : Off	
									D1	OSD2 flag 1 : On ; 0 : Off	
									D0	OSD1 flag 1 : On ; 0 : Off	

OSD # 1~4 Start Protection

OSD1_Start_Protection : 0x01											
OSD2_Start_Protection : 0x02											
OSD3_Start_Protection : 0x03											
OSD4_Start_Protection : 0x04											
4 Bytes Data Length											
1st BYTE DATA	D31	D30	D29	D28	D27	D26	D25	D24	D31	OSDx flag 1 : On ; 0 : Off	
	Unused								D30~D27	Unused	
2nd BYTE DATA	D23	D22	D21	D20	D19	D18	D17	D16	D26~D16	OSDx Left position	
	OSD Left								D15~D11	Unused	
3rd BYTE DATA	D15	D14	D13	D12	D11	D10	D9	D8	D10~D0	OSDx Top position	
4th BYTE DATA	D7	D6	D5	D4	D3	D2	D1	D0			
	OSDx Top								Left position Max : 1919 Top position Max : 1079		

OSD # 1~4 End Protection

OSD1_End_Protection : 0x05											
OSD2_End_Protection : 0x06											
OSD3_End_Protection : 0x07											
OSD4_End_Protection : 0x08											
4 Bytes Data Length											
1st BYTE DATA	D31	D30	D29	D28	D27	D26	D25	D24	D31~D27	Unused	
	Unused								D26~D16	OSDx Right position	
2nd BYTE DATA	D23	D22	D21	D20	D19	D18	D17	D16	D15~D11	Unused	
	OSD Right								D10~D0	OSDx Bottom position	
3rd BYTE DATA	D15	D14	D13	D12	D11	D10	D9	D8			
	Unused										
4th BYTE DATA	D7	D6	D5	D4	D3	D2	D1	D0			
	OSD Bottom								Right position Max : 1919 Bottom position Max : 1079		

Demo Window

Demo Window : 0x09										
4 Bytes Data Length										
1st BYTE DATA	D31	D30	D29	D28	D27	D26	D25	D24	D31~D25	Unused
	Unused							D24	Demo Window 1 : On ; 0 : Off	
2nd BYTE DATA	D23	D22	D21	D20	D19	D18	D17	D16	D23~D0	Unused
	Unused									
3rd BYTE DATA	D15	D14	D13	D12	D11	D10	D9	D8		
	Unused									
4th BYTE DATA	D7	D6	D5	D4	D3	D2	D1	D0		
	Unused									
Demo Window : 0x89										
1 Byte Data Length										
1st BYTE DATA	D7	D6	D5	D4	D3	D2	D1	D0	D7~D1	Unused
	Unused							D0	Demo Window 1 : On ; 0 : Off	

MEMC Level

ME Level : 0x0A										
4 Bytes Data Length										
1st BYTE DATA	D31	D30	D29	D28	D27	D26	D25	D24	D31~D29	Unused
	Unused				ME Level				D28~24	ME Level 0~F
2nd BYTE DATA	D23	D22	D21	D20	D19	D18	D17	D16		
	Unused									
3rd BYTE DATA	D15	D14	D13	D12	D11	D10	D9	D8	0 : Off 3 : Weak 8 : Normal D : Strong	
	Unused									
4th BYTE DATA	D7	D6	D5	D4	D3	D2	D1	D0		
	Unused								D23~D0	Unused
ME Level : 0x8A										
1 Byte Data Length										
1st BYTE DATA	D7	D6	D5	D4	D3	D2	D1	D0	D7~D4	Unused
	Unused				ME Level				D3~D0	ME Level 0~F
									0 : Off 3 : Weak 8 : Normal D : Strong	

GV Mode

GV Mode : 0x0B											
4 Bytes Data Length											
1st BYTE DATA	D31	D30	D29	D28	D27	D26	D25	D24	D31~D25	Unused	
	Unused							D24	1 : Graphic ; 0 : Video		
2nd BYTE DATA	D23	D22	D21	D20	D19	D18	D17	D16	D23~D0	Unused	
	Unused										
3rd BYTE DATA	D15	D14	D13	D12	D11	D10	D9	D8			
	Unused										
4th BYTE DATA	D7	D6	D5	D4	D3	D2	D1	D0			
	Unused										
GV Mode : 0x8B											
1 Byte Data Length											
1st BYTE DATA	D7	D6	D5	D4	D3	D2	D1	D0	D7~D1	Unused	
	Unused							D0	1 : Graphic ; 0 : Video		

Blanking (Enable/Disable)

Blanking : 0x0C											
4 Bytes Data Length											
1st BYTE DATA	D31	D30	D29	D28	D27	D26	D25	D24	D31~D26	Unused	
	Unused							D24	Blanking; 1 : On ; 0 : Off		
2nd BYTE DATA	D23	D22	D21	D20	D19	D18	D17	D16	D23~D0	Unused	
	Unused										
3rd BYTE DATA	D15	D14	D13	D12	D11	D10	D9	D8			
	Unused										
4th BYTE DATA	D7	D6	D5	D4	D3	D2	D1	D0			
	Unused							When the input signal is unstable, the screen should be blanked.			
Blanking : 0x8C											
1 Byte Data Length											
1st BYTE DATA	D7	D6	D5	D4	D3	D2	D1	D0	D7~D1	Unused	
	Unused							D0	Blanking; 1 : On ; 0 : Off		

Rotation Panel Function

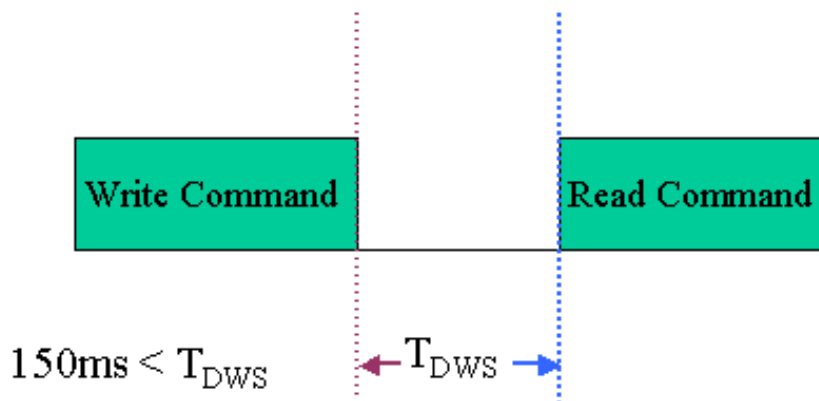
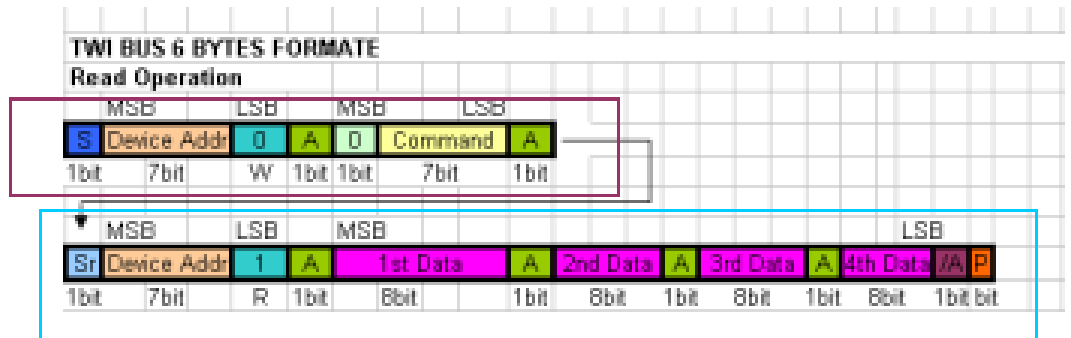
RPF : 0x0D											
4 Bytes Data Length											
1st BYTE DATA	D31	D30	D29	D28	D27	D26	D25	D24	D31~D26	Unused	
	Unused							D24	Rotation; 1 : 180° ; 0 : 0°		
2nd BYTE DATA	D23	D22	D21	D20	D19	D18	D17	D16	D23~D0	Unused	
	Unused										
3rd BYTE DATA	D15	D14	D13	D12	D11	D10	D9	D8			
	Unused										
4th BYTE DATA	D7	D6	D5	D4	D3	D2	D1	D0			
	Unused							0 : Normal display ↓ 1 : Rotation display ↗			
RPF : 0x8D											
1 Byte Data Length											
1st BYTE DATA	D7	D6	D5	D4	D3	D2	D1	D0	D7~D1	Unused	
	Unused							D0	Rotation; 1 : 180° ; 0 : 0°		

A.6 TWO WIRE BUS REQUIREMENT

Symbol	Parameter	Condition	Min	Max	Unit
V _L	Input Low-voltage		0	0.7	V
V _H	Input High-voltage		2.7	3.3	V
t _r	Rise Time for both SDA and SCL		20 + 0.1C _b	300	ns
t _{cf}	Output Fall Time from V _{IHmin} to V _{ILmax}	10 pF < C _b < 400 pF	20 + 0.1C _b	250	ns
I _i	Input Current each I/O Pin	0.1V _{CC} < V _i < 0.9V _{CC}	-10	10	uA
C _i	Capacitance for each I/O Pin		NA	10	pF
f _{SCL}	SCL Clock Frequency		4	50	KHz
R _p	Value of Pull-up resistor	f _{SCL} ≤ 50KHz	3000	1000ns/C _b	Ω
t _{HDSTA}	Hold Time (repeated) STAR Condition	f _{SCL} ≤ 50KHz	4	NA	us
t _{LOW}	Low Period of the SCL Clock	f _{SCL} ≤ 50KHz	4.7	NA	us
t _{HIGH}	High Period of the SCL Clock	f _{SCL} ≤ 50KHz	4	NA	us
t _{SUSTA}	Set-up time for a repeated STAR Condition	f _{SCL} ≤ 50KHz	4.7	NA	us
t _{HDDAT}	Data hold time	f _{SCL} ≤ 50KHz	0	3.45	us
t _{SUDAT}	Data setup time	f _{SCL} ≤ 50KHz	250	NA	ns
t _{SUSTO}	Setup time for STOP Condition	f _{SCL} ≤ 50KHz	4	NA	us
t _{QLF}	Bus free time between a STOP and START Condition	f _{SCL} ≤ 50KHz	4.7	NA	us

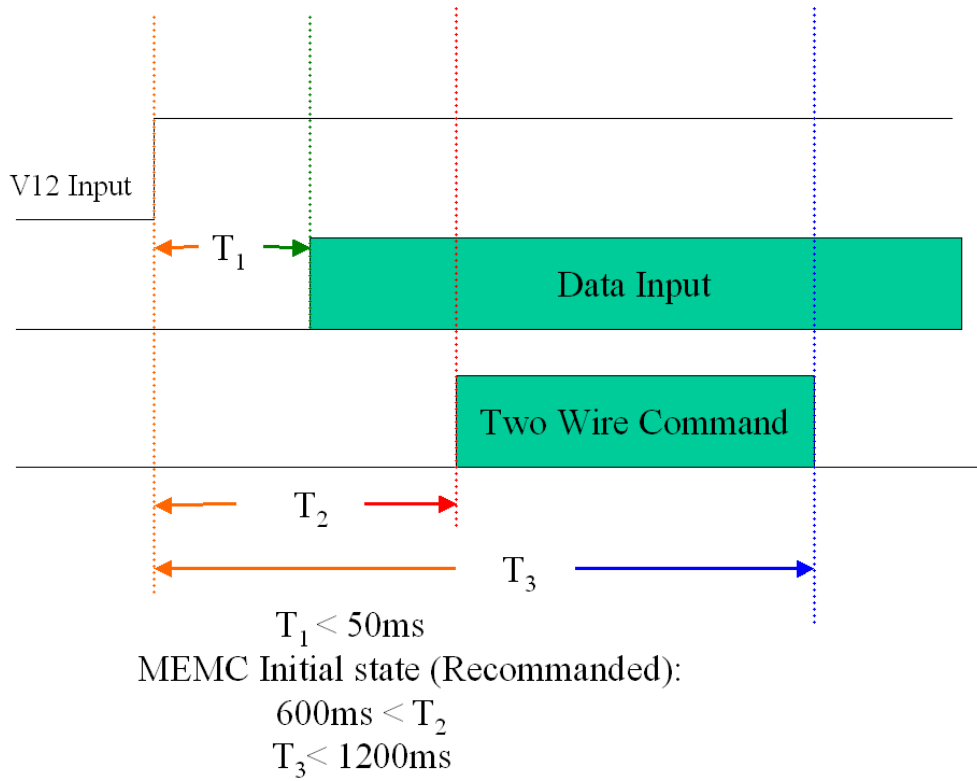
Write Command

Read Command



A.7 THE TWO WIRE BUS SEQUENCE

I. Initial state



II. Stable state

