



VIA Labs, Inc.

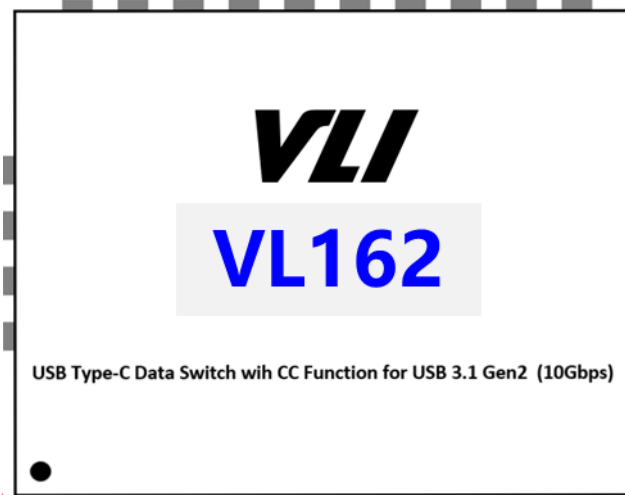
Data Sheet

VL162

**USB Type-C Data Switch with CC Function
for USB 3.1 Gen2 (10Gbps)**

Jan 19th, 2021

Revision 0.91



Revision History

Rev	Draft Date	History	Initial
0.90	12/31/2020	Preliminary Release	TH
0.91	1/19/2021	Update REXT value typo	TH

VIA CONFIDENTIAL

Contents

Product Feature	- 4 -
Block Diagram	- 5 -
Pinout	- 6 -
Pin List	- 7 -
Pin Descriptions	- 8 -
Application Diagram	- 9 -
Electrical Specification	- 11 -
Reflow Profile	- 12 -
Package Mechanical Specifications	- 13 -
Package Top Side Marking	- 14 -
Ordering Information.....	- 14 -
Tape and Reel Information	- 15 -

List of Figures

Figure 1 - Block Diagram	- 5 -
Figure 2 - Pin Diagram (QFN-28)	- 6 -
Figure 3 - Reflow	- 12 -
Figure 4 - Mechanical Specification.....	- 13 -
Figure 5 - Package Top Side Marking.....	- 14 -
Figure 6 - Tape & Reel Information	- 15 -

VIA CONFIDENTIAL

Product Feature

VL162

USB Type-C Data Switch with CC Function for USB 3.1 Gen2 (10 Gbps)

- **4:2 10Gbps USB Type-C Data Switch**
- **Support up to 10Gbps**
- **2 Differential Channel, 2:1 MUX/DeMUX**
- **Compatible with 10Gbps USB3.1 Gen2**
- **Low power consumption with 6mW active at device mode**
- **High DC common mode voltage supporting to 2.0V**
- **28 pins QFN 3.5 x 4.5mm package**
- **ESD > 2.5kV, CDM > 500V**
- **Lead(Pb)-Free and RoHS compliant**
- **MUX / DEMUX**
 - Insertion loss: -1.4dB @ 5GHz typ.
 - 1.95dB @ 8GHz typ.
 - 2.25dB @ 10GHz typ.
 - Return loss: -20dB @ 5GHz typ.
 - 20dB @ 8GHz typ.
 - 18dB @ 10GHz typ.
 - Crosstalk Isolation: -50dB @ 5GHz typ.
 - 47dB @ 8GHz typ.
 - 45dB @ 10GHz typ.
 - Off Isolation: -22dB @ 5GHz typ.
 - 19dB @ 8GHz typ.
 - 16dB @ 10GHz typ.
- **CC Functional**
 - Define Role: Device (UFP, default) or Host (DFP)
 - Plug Orientation: Flipped or Not, and control Switch SEL
 - (UFP) Current Capability Detect: 3.0A, 1.5A, or 0.9A
 - (UFP) Rd
 - (DFP) Rp (or Ip), Vconn SW if Ra
 - (DFP) VBUS_EN to turn on Host VBUS SW
- **Vconn**
 - 5V, max Power is 1.5W, max current is 380mA
 - Over current protection

Block Diagram

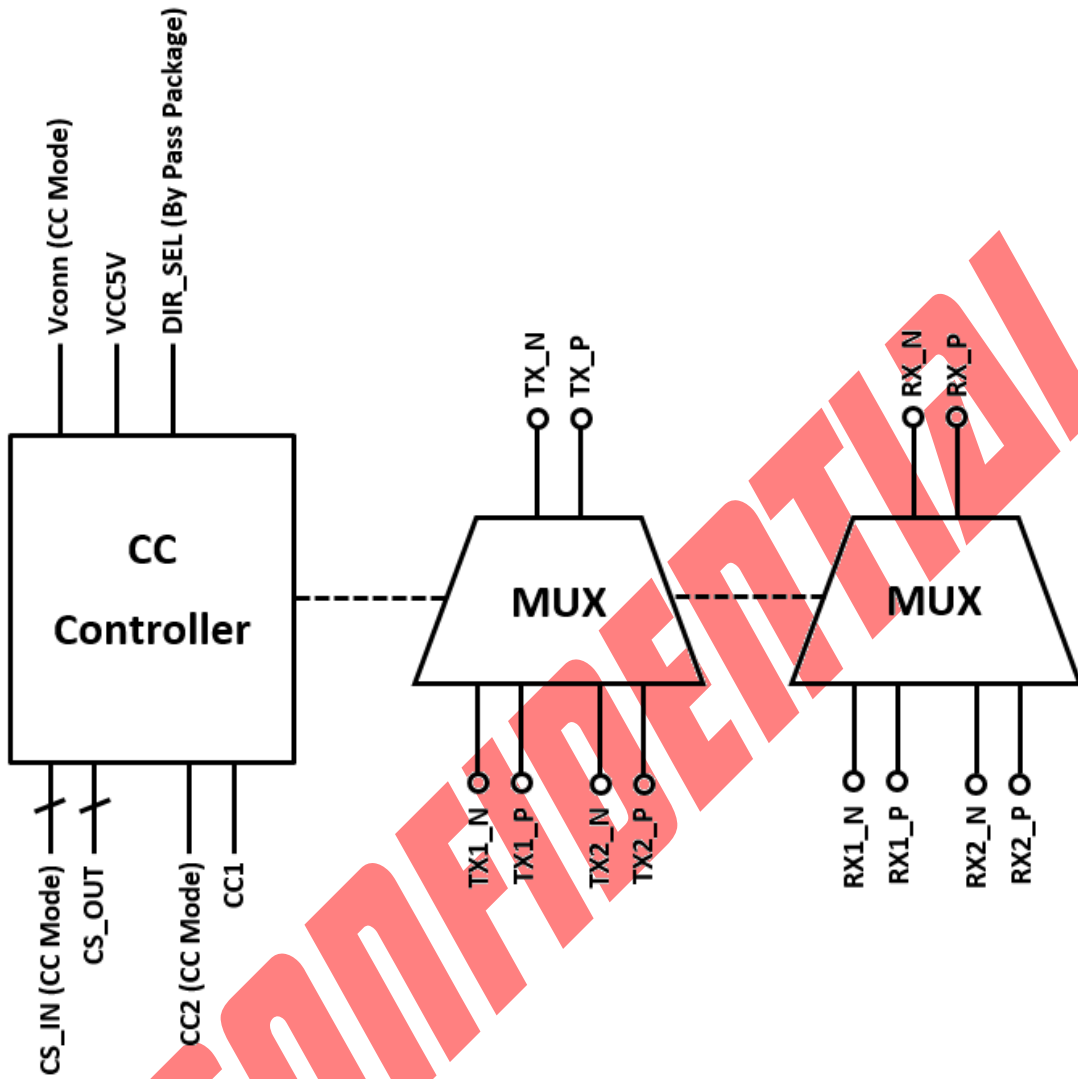


Figure 1 - Block Diagram

Pinout

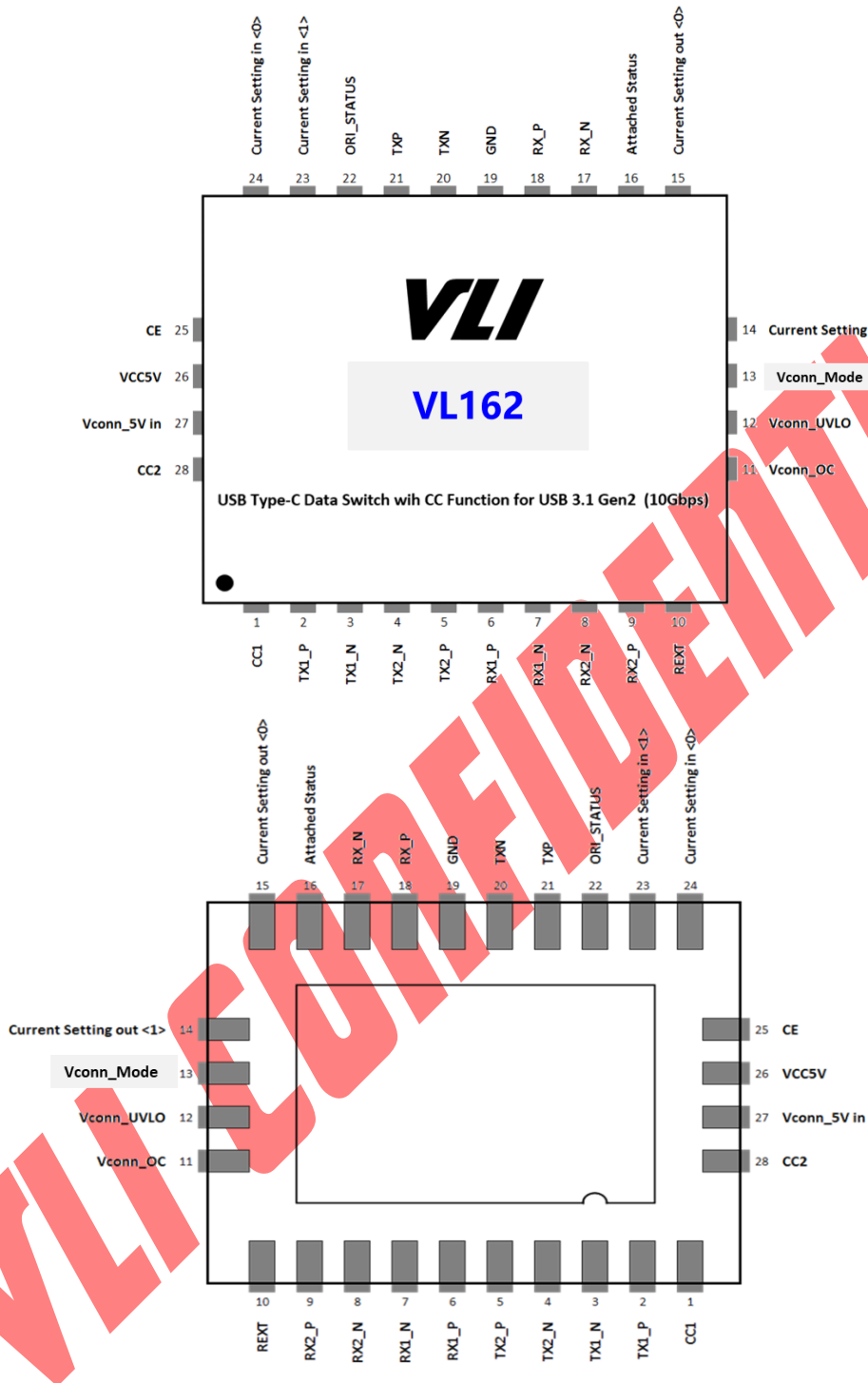


Figure 2 - Pin Diagram (QFN-28)

Pin List

Pin	Pin Name	Pin	Pin Name
1	CC1	15	Current Setting out <0>
2	TX1_P	16	Attached_Status
3	TX1_N	17	RX_N
4	TX2_N	18	RX_P
5	TX2_P	19	GND
6	RX1_P	20	TXN
7	RX1_N	21	TXP
8	RX2_N	22	ORI_STATUS
9	RX2_P	23	Current Setting in <1>
10	REXT	24	Current Setting in <0>
11	Vconn_OC	25	CE
12	Vconn_UVLO	26	VCC5V
13	Vconn_Mode	27	Vconn_5V in
14	Current Setting out <1>	28	CC2

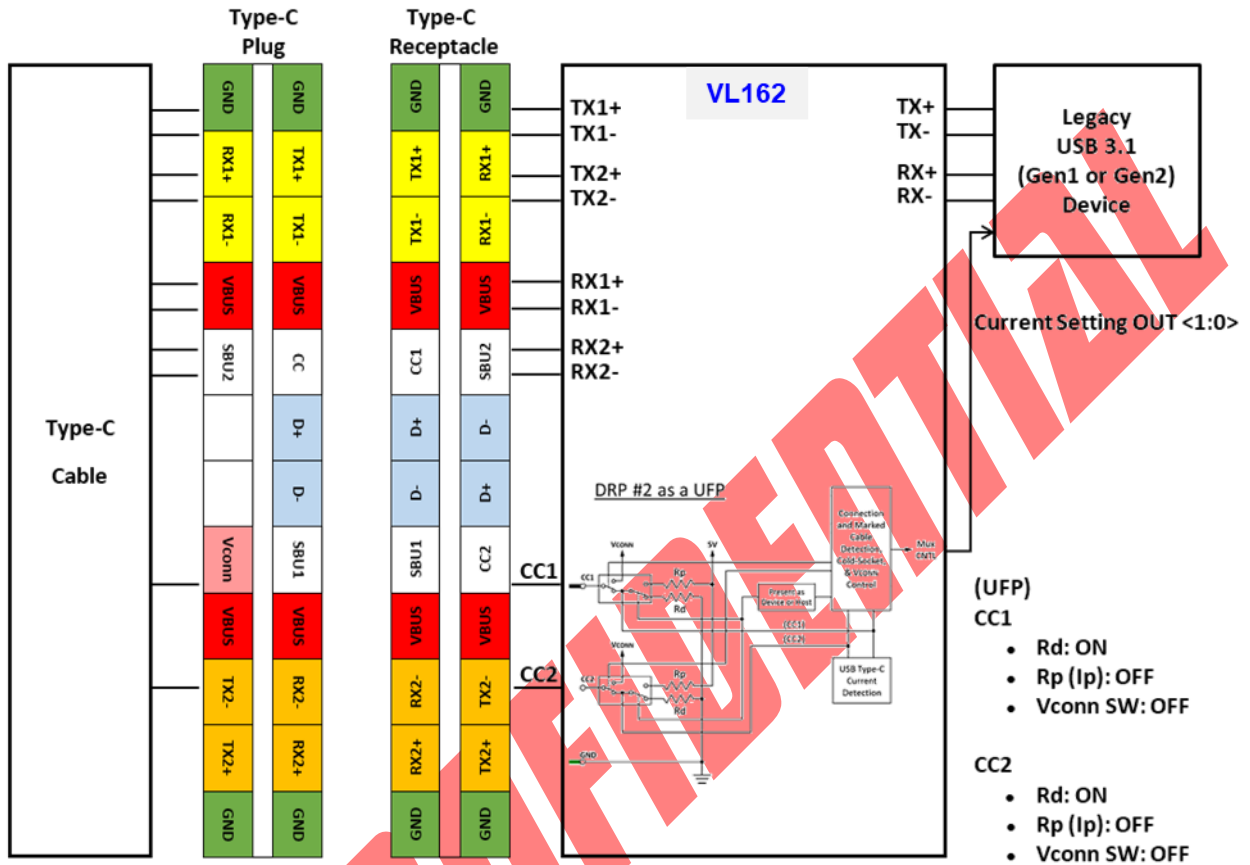
VIA CONFIDENTIAL

Pin Descriptions

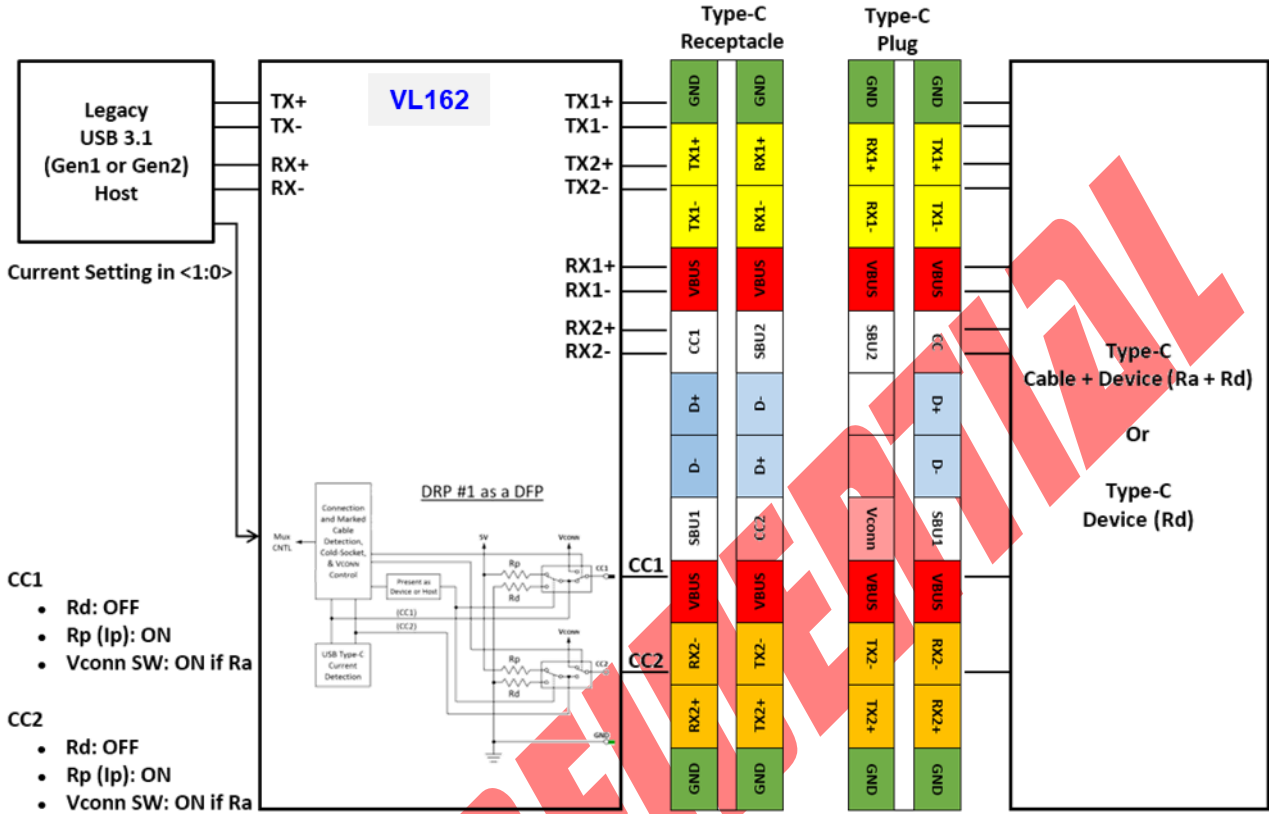
Pin Name	Pin #	I/O	Description
CC1	1	AI/O	0~5V analog input
TX1_P	2	High Speed I/O	USB differential pair
TX1_N	3		
TX2_N	4	High Speed I/O	USB differential pair
TX2_P	5		
RX1_P	6	High Speed I/O	USB differential pair
RX1_N	7		
RX2_N	8	High Speed I/O	USB differential pair
RX2_P	9		
REXT	10		External resister 124k 1% connect to GND
Vconn_OC	11	DO	Vconn Over current, 3.3V = Over current
Vconn_UVLO	12	DO	Vconn Under voltage, 3.3V = under voltage
Vconn_Mode	13	DI	1) Vconn_Mode = GND: DFP supply Vconn when Rd attach 2) Vconn_Mode = Floating: Supply Vconn both in Rd & Ra attach
Current Setting out <1>	14	DO	(3.3V logic) 11: CC Support 3A 10: CC Support 1.5A 01: UNDEFINED 00: CC Support Legacy
Current Setting out <0>	15	DO	Reasoning: Easily identify 3A vs 1.5A or Legacy/1.5A or Legacy using just 1 pin. If they need to differentiate between 1.5A and 3A, then use 2 pins
Attached_Status	16	DO	Indication for port attached, 3.3V = attached
RX_N	17	High Speed I/O	USB differential pair
RX_P	18		
GND	19	GND	Ground
TXN	20	High Speed I/O	USB differential pair
TXP	21		
ORI_STATUS	22	DO	Orientation status 0 = TX1/RX1, 3.3V = TX2/RX2
Current Setting in <1>	23	AI	(3.3V logic) Rp/Rd setting input 00: Ip = 80uA 01: Ip = 180uA 10: Ip = 330uA 11: Rd = 5.1kΩ
Current Setting in <0>	24	AI	00: Rp = 36kΩ 01: Rp = 12kΩ 10: Rp = 4.7kΩ 11: Rd = 5.1kΩ
CE	25	DI	1) CE=5V: Chip Enable 2) CE=GND: Chip Disable
VCC5V	26	PWR	VCC5V for controller
VCONN_5V in	27	PWR	5V input for Vconn
CC2	28	AI/O	0~5V analog input

Application Diagram

Application for Cable + Device



Application for Host + Cable or Host only



Electrical Specification

Absolute Maximum Rating

Symbol	Parameter	Min	Max	Unit	Note
T _{STG}	Storage Temperature	-55	125	°C	-
V _{DD}	Supply voltage	-0.3	6.0	V	
V _{ESD}	Electrostatic Discharge	2kV		V	Human Body Model
θ _{jc}	Thermal resistance between junction and case	4L PCB	36.7	°C/W	
		2L PCB	28.1		
T _j	Junction Temperature	0	125	°C	

Note: Stress above conditions may cause permanent damage to the device.
Functional operation of this device should be restricted to the conditions described.

Note: About thermal factors, T_a is the concerned ambient temperature, and

$$\theta_{ca} = \theta_{ja} - \theta_{jc}$$

$$T_j = \theta_{ja} * P_D + T_a$$

$$T_c = \theta_{ca} * P_D + T_a$$

Operating Conditions

Symbol	Parameter	Min	Typ.	Max	Unit	Note
V _{DD}	Supply voltage	4.5	5.0	5.5	V	
T _A	Ambient Temperature	-45		85	°C	

Static characteristics:

V_{DD} = 5.0V ± 10%; Temp = -40°C to +85°C; unless otherwise specified.

Symbol	Parameter	Conditions	Min	Typ.	Max	Unit
IDD	Supply current	Operation mode		1.2		mA
		Shutdown mode		0.5		mA
V _{IH}	High-level input voltage		2.7			V
V _{IL}	Low-level input voltage				0.4	V
V _{com}	Input Common mode voltage		0		2	V

Reflow Profile

Follow: IPC/JEDEC J-STD-020 D.1

Condition

Average ramp-up rate (217°C to peak): 1~2°C /sec max.

Preheat: 150~200°C, 60~120 seconds

Temperature maintained above 217°C: 60~150 seconds

Time (tp)* within 5°C of the specified classification temperature (Tc = (260°C)), (the time above 255°C) ≥ 30 sec.

Peak temperature: 260+5/-0°C

Ramp-down rate: 3°C /sec. max.

Time 25°C to peak temperature: 8 minutes max.

Cycle interval: 5 minus

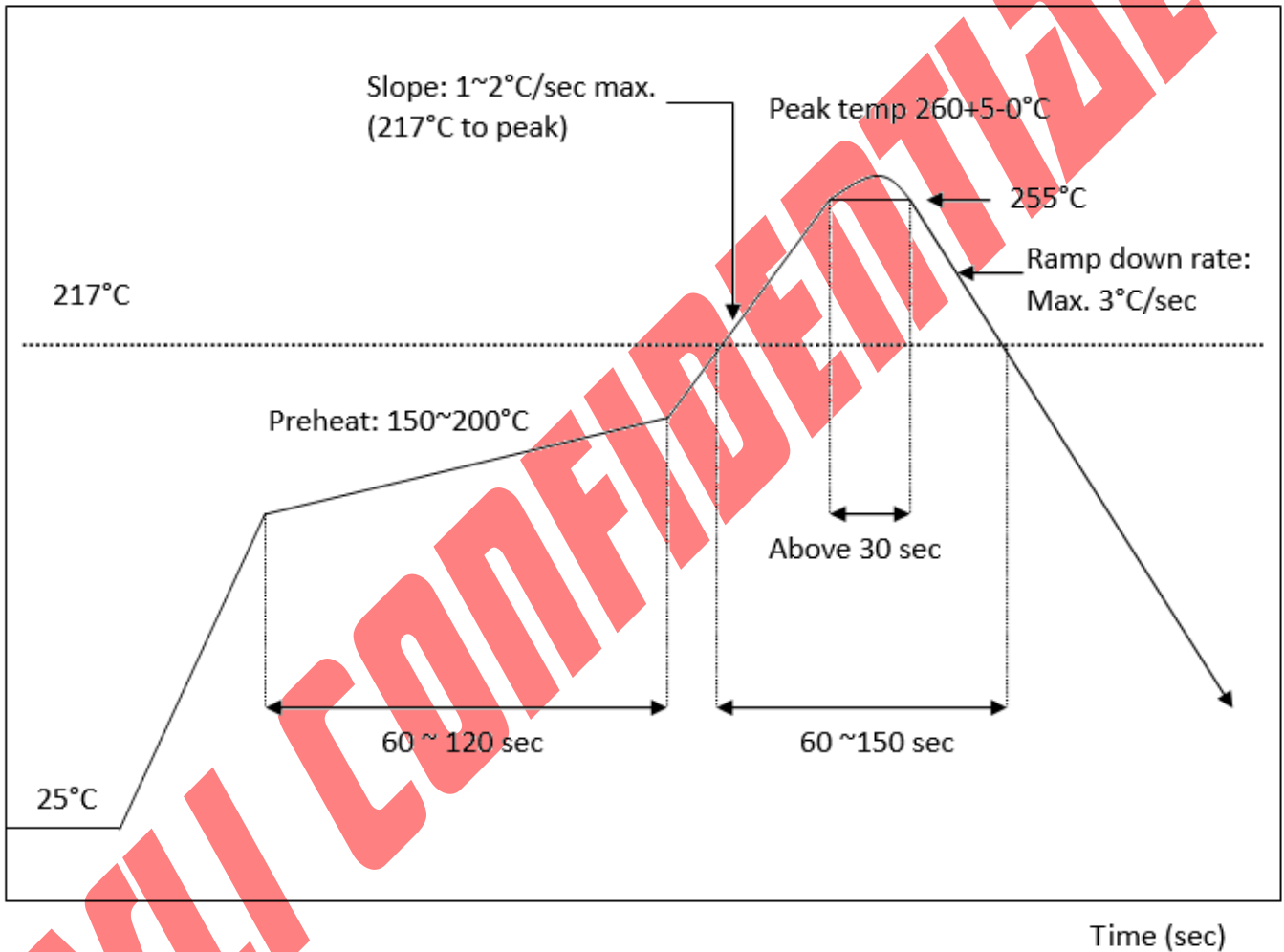


Figure 3 - Reflow

Package Mechanical Specifications

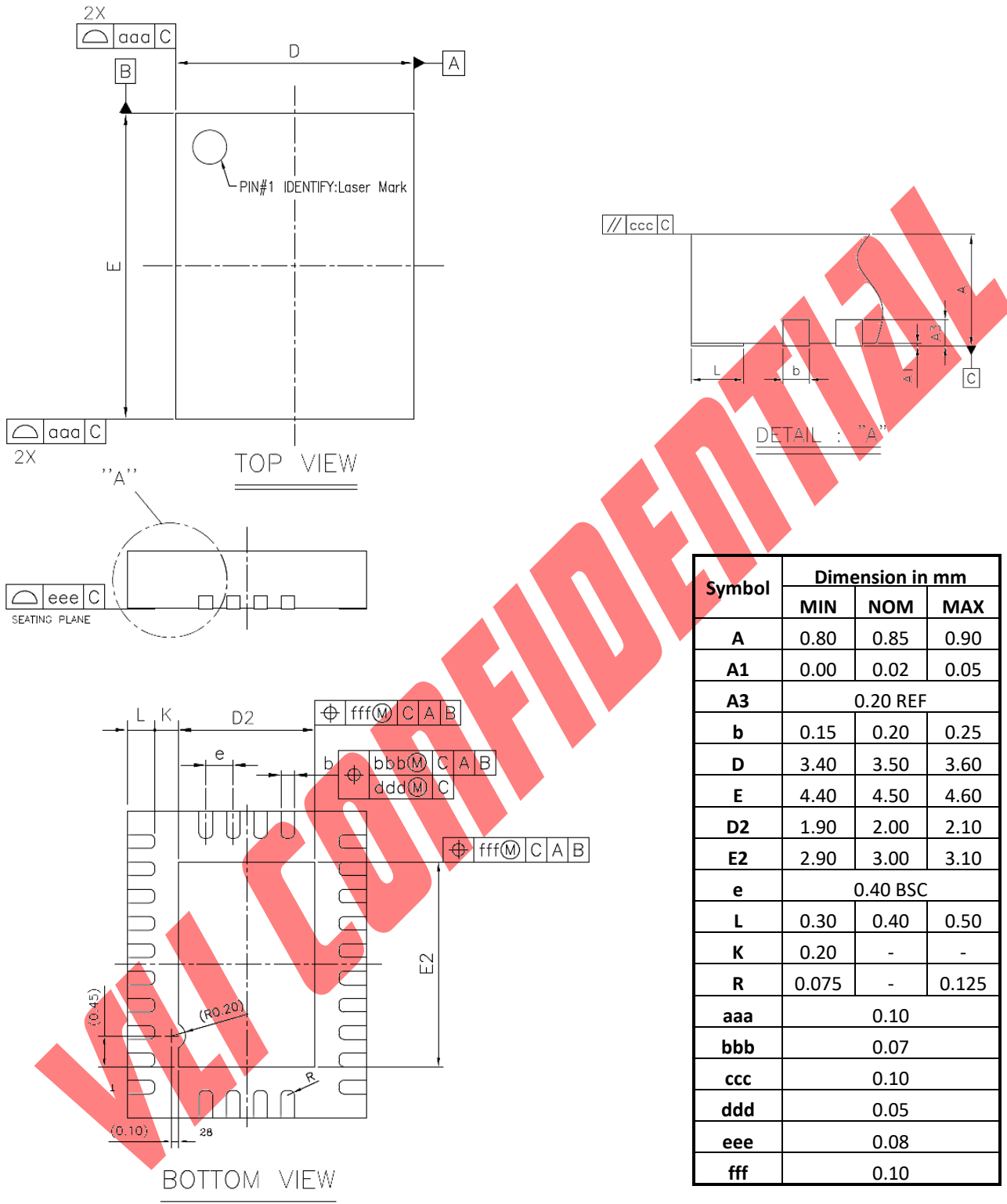


Figure 4 - Mechanical Specification

Package Top Side Marking

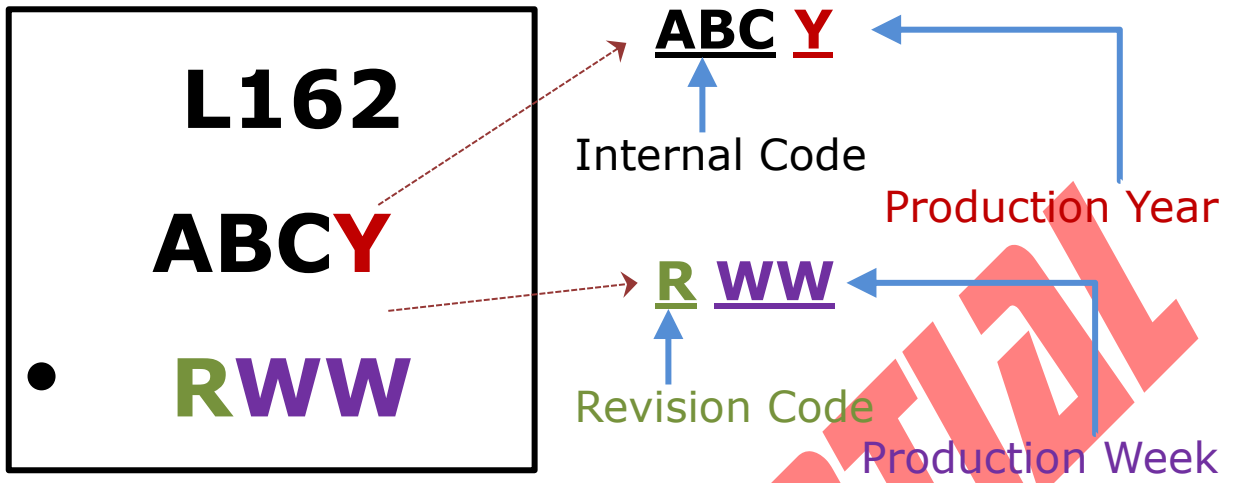


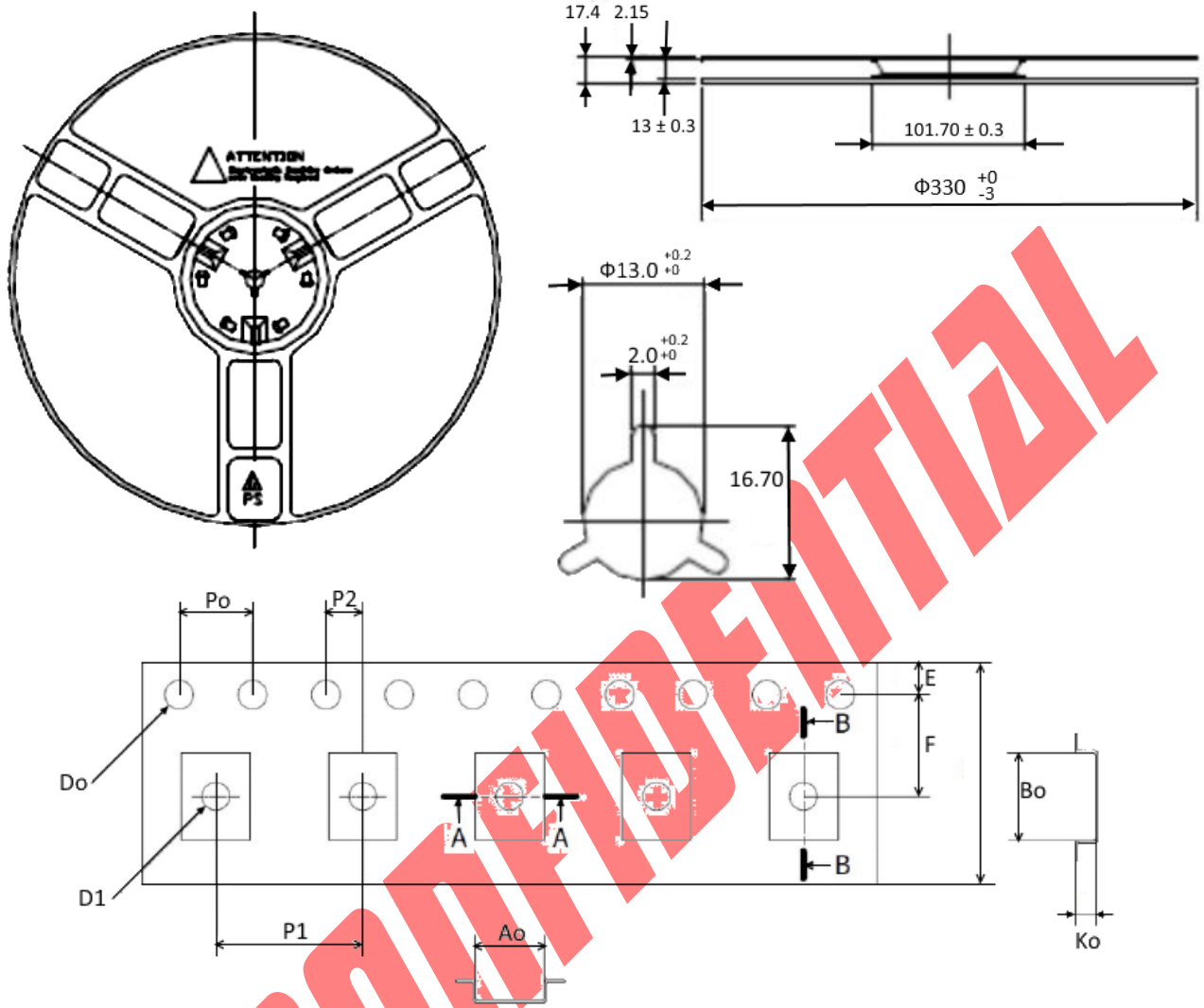
Figure 5 - Package Top Side Marking

Ordering Information

Please contact VIA Labs sales representative or distributor in your region for ordering part number details.

VIA CONFIDENTIAL

Tape and Reel Information



Unit: mm

Symbol	Spec	Tolerance
Ao	3.75	± 0.10
Bo	4.75	± 0.10
Ko	1.10	± 0.10

Unit: mm

Symbol	Spec	Tolerance
Po	4.00	± 0.10
P1	8.00	± 0.10
P2	2.00	± 0.05
Do	1.55	± 0.05
D1	1.50	(Min.)
E	1.75	± 0.10
F	5.50	± 0.05
10Po	40.00	± 0.20
W	12.00	± 0.20
T	0.25	± 0.05

Figure 6 - Tape & Reel Information

CONFIDENTIAL

VIA Labs, Inc.
www.via-labs.com
7F, 529-1, Zhongzheng Rd.,
Xindian District, New Taipei City 23148 Taiwan, R.O.C.
TEL: 886-2-2218-1838

Copyright © 2021 VIA Labs, Inc. All Rights Reserved.

No part of this document may be reproduced, transmitted, transcribed, stored in a retrieval system, or translated into any language, in any form or by any means, electronic, mechanical, magnetic, optical, chemical, manual or otherwise without the prior written permission of VIA Labs, Inc. The material in this document is for information only and is subject to change without notice. VIA Labs, Inc. reserves the right to make changes in the product design without reservation and without notice to its users.

All trademarks are the properties of their respective owners.

No license is granted, implied or otherwise, under any patent or patent rights of VIA Labs, Inc. VIA Labs, Inc. makes no warranties, implied or otherwise, in regard to this document and to the products information described in this document. The information provided by this document is believed to be accurate and reliable as of the publication date of this document. However, VIA Labs, Inc. assumes no responsibility for any errors in this document. Furthermore, VIA Labs, Inc. assumes no responsibility for the use or misuse of the information in this document and for any patent infringements that may arise from the use of this document. The information and product specifications within this document are subject to change at any time, without notice and without obligation to notify any person of such change.