

Coaxial Low Pass Filter

DC to 1050 MHz (40 dB Isolation up to 20 GHz)

NEW!
VLFX-1050

Maximum Ratings

Operating Temperature -55°C to 100°C

Storage Temperature -55°C to 100°C

RF Power Input* 10W max. at 25°C

*Passband rating, derate linearly to 3.5W at 100°C ambient.

Features

- very good isolation, 40 dB up to 20 GHz
- 21 sections
- temperature stable LTCC internal structure
- patent pending
- re-entry frequency > 20 GHz
- rugged stainless steel unibody

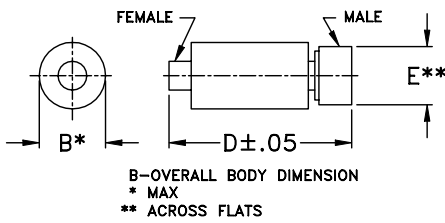


CASE STYLE: FF1118
PRICE: \$ 39.95 ea. QTY (1-9)

Applications

- harmonic rejection
- transmitters/receivers
- lab use
- test instrumentation

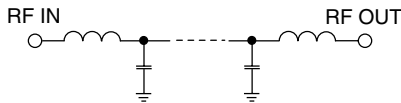
Outline Drawing



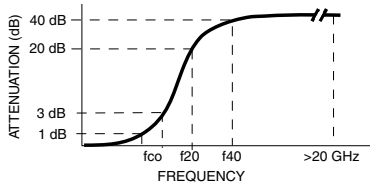
Outline Dimensions (inch/mm)

B	D	E	wt.
.39	2.67	.312	grams
9.91	67.82	7.92	17.0

Functional Schematic



Typical Frequency Response



Low Pass Filter Electrical Specifications @ 25°C

MODEL NO.	PASSBAND (MHz) (Loss < 1.2dB) Max.	fco, MHz Nom (Loss 3 dB) Typ	STOPBAND (MHz) (Loss, dB)		VSWR (:1)		NO. OF SECTIONS
			f20 Min.	f40 Typ.	Stopband Typ.	Passband Typ.	
VLFX-1050	DC-1050	1675	1990	2275-20000	10	1.4	21

Typical Performance Data @ 25°C

Frequency (MHz)	Insertion Loss (dB)	VSWR (:1)
50	0.21	1.04
400	0.41	1.03
750	0.73	1.18
1050	1.00	1.38
1200	1.21	1.40
1450	1.58	1.17
1650	3.01	1.54
1750	6.88	3.26
1850	15.92	6.97
1900	22.14	8.92
2000	38.42	11.96
4000	87.87	40.57
6000	79.32	59.00
8000	79.32	59.00
10000	78.90	45.17
12000	47.80	3.99
14000	50.11	16.18
16000	83.95	31.61
18000	71.89	4.18
20000	69.48	8.16

