

## Insulated Gate Bipolar Transistor (Ultrafast Speed IGBT), 100 A


**SOT-227**

PRIMARY CHARACTERISTICS	
$V_{CES}$	600 V
$V_{CE(on)}$ (typical)	1.92 V
$V_{GE}$	15 V
$I_C$	100 A
Speed	8 kHz to 30 kHz
Package	SOT-227
Circuit configuration	Single switch no diode

**FEATURES**

- Ultrafast: optimized for minimum saturation voltage and speed up to 30 kHz in hard switching, > 200 kHz in resonant mode
- Very low conduction and switching losses
- Fully isolate package (2500 V<sub>AC</sub>/RMS)
- Very low internal inductance ( $\leq 5$  nH typical)
- Industry standard outline
- UL approved file E78996
- Designed and qualified for industrial level
- Material categorization: for definitions of compliance please see [www.vishay.com/doc?99912](http://www.vishay.com/doc?99912)


**RoHS  
COMPLIANT**
**BENEFITS**

- Designed for increased operating efficiency in power conversion: UPS, SMPS, welding, induction heating
- Lower overall losses available at frequencies = 20 kHz
- Easy to assemble and parallel
- Direct mounting to heatsink
- Lower EMI, requires less snubbing
- Plug-in compatible with other SOT-227 packages

ABSOLUTE MAXIMUM RATINGS				
PARAMETER	SYMBOL	TEST CONDITIONS	MAX.	UNITS
Collector to emitter breakdown voltage	$V_{CES}$		600	V
Continuous collector current	$I_C$	$T_C = 25^\circ\text{C}$	200	A
		$T_C = 100^\circ\text{C}$	100	
Pulsed collector current	$I_{CM}$		400	
Clamped inductive load current	$I_{LM}$	$V_{CC} = 80\% (V_{CES}), V_{GE} = 20\text{ V}, L = 10\ \mu\text{H}, R_g = 2.0\ \Omega$ , see fig. 13a	400	
Gate to emitter voltage	$V_{GE}$		$\pm 20$	V
Reverse voltage avalanche energy	$E_{ARV}$	Repetitive rating; pulse width limited by maximum junction temperature	160	mJ
RMS isolation voltage	$V_{ISOL}$	Any terminal to case, $t = 1$ min	2500	V
Maximum power dissipation	$P_D$	$T_C = 25^\circ\text{C}$	500	W
		$T_C = 100^\circ\text{C}$	200	
Operating junction and storage temperature range	$T_J, T_{Stg}$		-55 to +150	$^\circ\text{C}$
Mounting torque		6-32 or M3 screw	1.3 (12)	Nm (lbf.in)

THERMAL AND MECHANICAL SPECIFICATIONS						
PARAMETER	SYMBOL	TEST CONDITIONS	MIN.	TYP.	MAX.	UNITS
Junction and storage temperature range	$T_J, T_{Stg}$		-55	-	150	$^\circ\text{C}/\text{W}$
Thermal resistance, junction to case	$R_{thJC}$		-	-	0.25	
Thermal resistance case to heatsink	$R_{thCS}$	Flat, greased, surface	-	0.05	-	
Weight			-	30	-	g
Mounting torque		Torque to terminal	-	-	1.1 (9.7)	Nm (lbf.in)
		Torque to heatsink	-	-	1.8 (15.9)	Nm (lbf.in)
Case style			SOT-227			



<b>ELECTRICAL SPECIFICATIONS</b> ( $T_J = 25\text{ }^\circ\text{C}$ unless otherwise specified)						
PARAMETER	SYMBOL	TEST CONDITIONS	MIN.	TYP.	MAX.	UNITS
Collector to emitter breakdown voltage	$V_{(BR)CES}$	$V_{GE} = 0\text{ V}$ , $I_C = 250\text{ }\mu\text{A}$	600	-	-	V
Emitter to collector breakdown voltage	$V_{(BR)ECS}$	$V_{GE} = 0\text{ V}$ , $I_C = 1.0\text{ A}$ Pulse width $\leq 80\text{ }\mu\text{s}$ ; duty factor $\leq 0.1\%$	18	-	-	
Temperature coefficient of breakdown voltage	$\Delta V_{(BR)CES}/\Delta T_J$	$V_{GE} = 0\text{ V}$ , $I_C = 10\text{ mA}$	-	0.38	-	V/ $^\circ\text{C}$
Collector to emitter saturation voltage	$V_{CE(on)}$	$I_C = 100\text{ A}$	-	1.60	1.9	V
		$I_C = 200\text{ A}$	-	1.92	-	
		$I_C = 100\text{ A}$ , $T_J = 150\text{ }^\circ\text{C}$	-	1.54	-	
Gate threshold voltage	$V_{GE(th)}$	$V_{CE} = V_{GE}$ , $I_C = 250\text{ }\mu\text{A}$	3.0	-	6.0	
Temperature coefficient of threshold voltage	$\Delta V_{GE(th)}/\Delta T_J$	$V_{CE} = V_{GE}$ , $I_C = 2.0\text{ mA}$	-	-11	-	mV/ $^\circ\text{C}$
Forward transconductance	$g_{fe}$	$V_{CE} = 100\text{ V}$ , $I_C = 100\text{ A}$ Pulse width $5.0\text{ }\mu\text{s}$ , single shot	79	-	-	S
Zero gate voltage collector current	$I_{CES}$	$V_{GE} = 0\text{ V}$ , $V_{CE} = 600\text{ V}$	-	-	1.0	mA
		$V_{GE} = 0\text{ V}$ , $V_{CE} = 600\text{ V}$ , $T_J = 150\text{ }^\circ\text{C}$	-	-	10	
Gate to emitter leakage current	$I_{GES}$	$V_{GE} = \pm 20\text{ V}$	-	-	$\pm 250$	nA

<b>SWITCHING CHARACTERISTICS</b> ( $T_J = 25\text{ }^\circ\text{C}$ unless otherwise specified)						
PARAMETER	SYMBOL	TEST CONDITIONS	MIN.	TYP.	MAX.	UNITS
Total gate charge (turn-on)	$Q_g$	$I_C = 100\text{ A}$	-	770	1200	nC
Gate-emitter charge (turn-on)	$Q_{ge}$	$V_{CC} = 400\text{ V}$	-	100	150	
Gate-collector charge (turn-on)	$Q_{gc}$	$V_{GE} = 15\text{ V}$ ; See fig. 8	-	260	380	
Turn-on delay time	$t_{d(on)}$	$T_J = 25\text{ }^\circ\text{C}$ $I_C = 100\text{ A}$ $V_{CC} = 480\text{ V}$ $V_{GE} = 15\text{ V}$	-	54	-	ns
Rise time	$t_r$		-	79	-	
Turn-off delay time	$t_{d(off)}$		-	130	200	
Fall time	$t_f$		-	300	450	
Turn-on switching loss	$E_{on}$	$R_g = 2.0\text{ }\Omega$	-	0.98	-	mJ
Turn-off switching loss	$E_{off}$	Energy losses include "tail"	-	3.48	-	
Total switching loss	$E_{ts}$	See fig. 9, 10, 14	-	4.46	7.6	
Turn-on delay time	$t_{d(on)}$	$T_J = 150\text{ }^\circ\text{C}$ $I_C = 100\text{ A}$ , $V_{CC} = 480\text{ V}$ $V_{GE} = 15\text{ V}$ , $R_g = 2.0\text{ }\Omega$ Energy losses include "tail"	-	56	-	ns
Rise time	$t_r$		-	75	-	
Turn-off delay time	$t_{d(off)}$		-	160	-	
Fall time	$t_f$		-	460	-	
Total switching loss	$E_{ts}$	See fig. 10, 11, 14	-	7.24	-	mJ
Internal emitter inductance	$L_E$	Measured 5 mm from package	-	5.0	-	nH
Input capacitance	$C_{ies}$	$V_{GE} = 0\text{ V}$ $V_{CC} = 30\text{ V}$ $f = 1.0\text{ MHz}$ ; See fig. 7	-	16 500	-	pF
Output capacitance	$C_{oes}$		-	1000	-	
Reverse transfer capacitance	$C_{res}$		-	200	-	

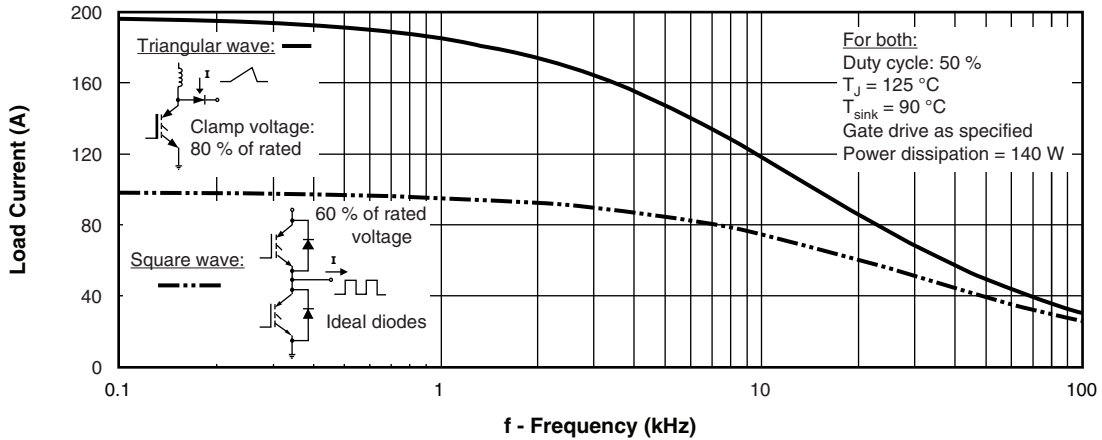


Fig. 1 - Typical Load Current vs. Frequency  
(Load Current =  $I_{RMS}$  of Fundamental)

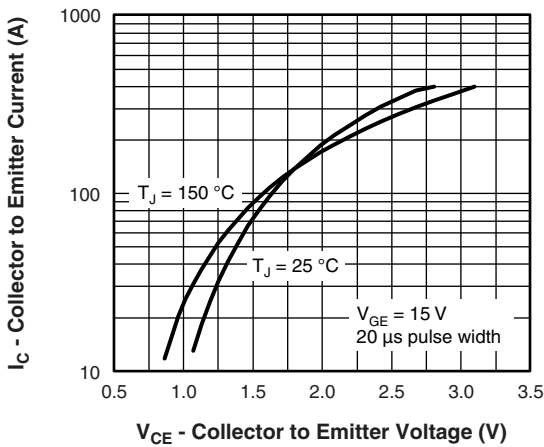


Fig. 2 - Typical Output Characteristics

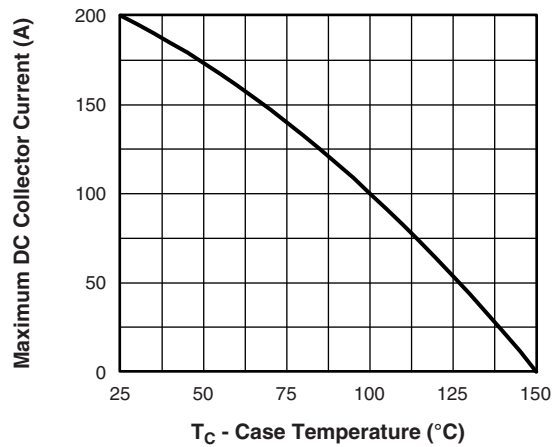


Fig. 4 - Maximum Collector Current vs. Case Temperature

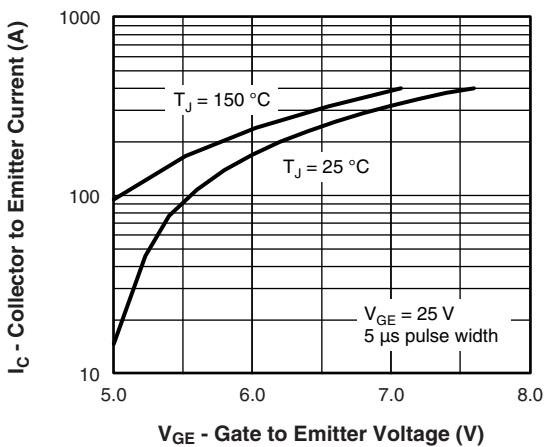


Fig. 3 - Typical Transfer Characteristics

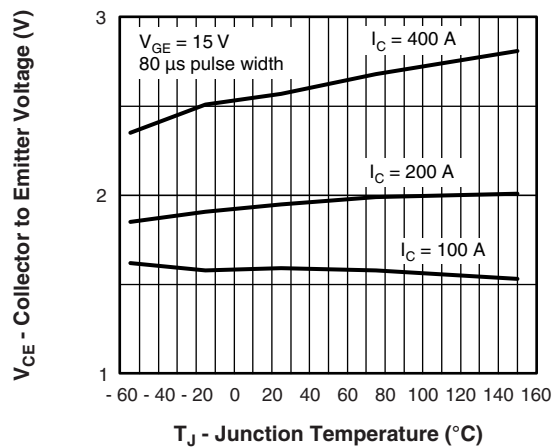


Fig. 5 - Typical Collector to Emitter Voltage vs. Junction Temperature

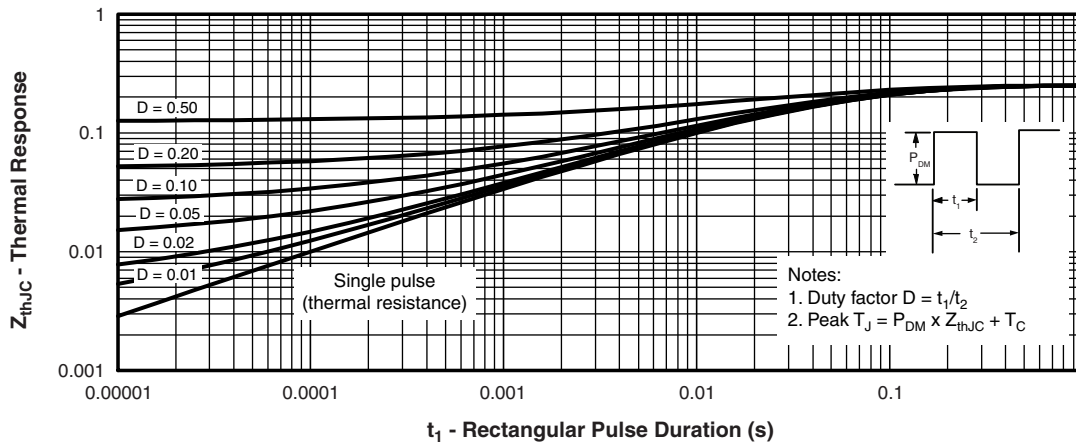


Fig. 6 - Maximum Effective Transient Thermal Impedance, Junction to Case

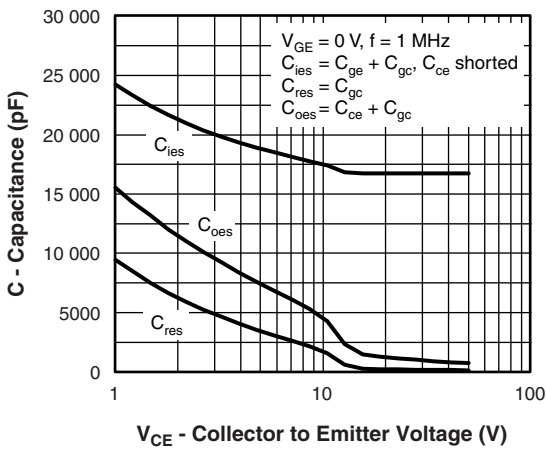


Fig. 7 - Typical Capacitance vs. Collector to Emitter Voltage

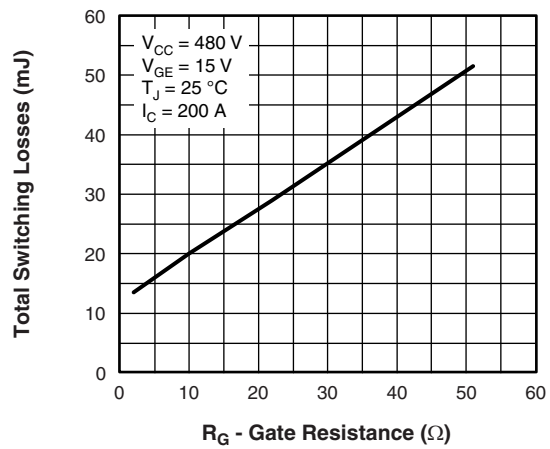


Fig. 9 - Typical Switching Losses vs. Gate Resistance

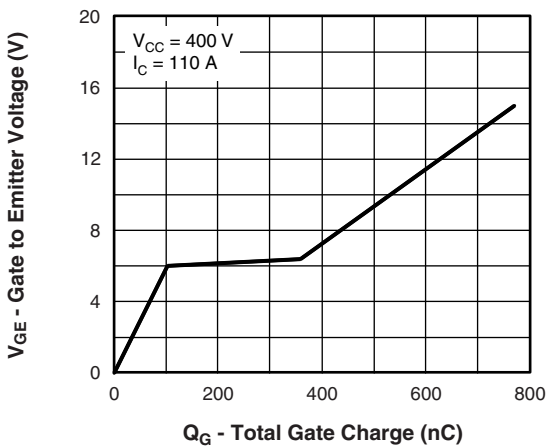


Fig. 8 - Typical Gate Charge vs. Gate to Emitter Voltage

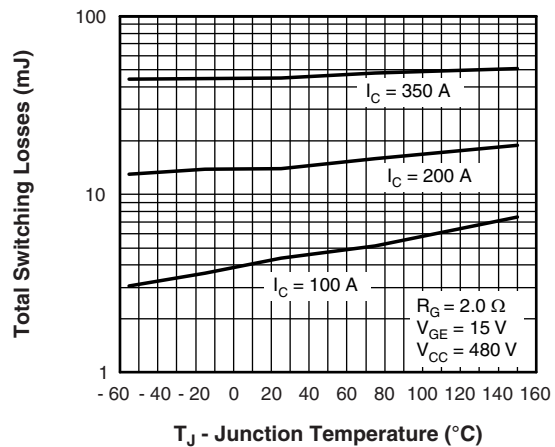


Fig. 10 - Typical Switching Losses vs. Junction Temperature

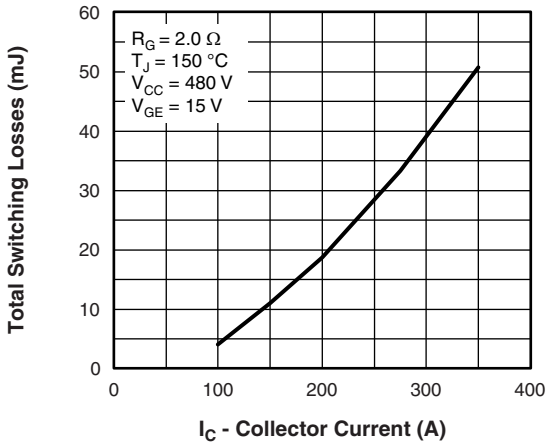


Fig. 11 - Typical Switching Losses vs. Collector Current

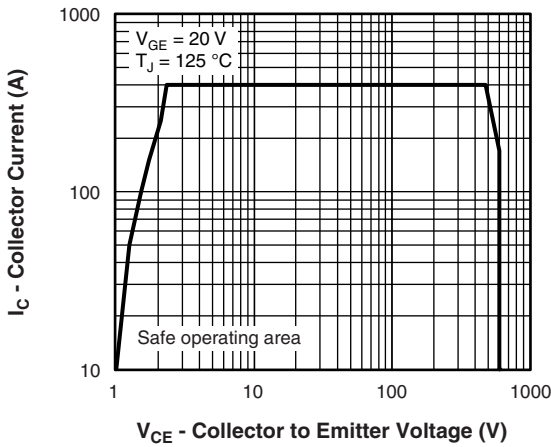
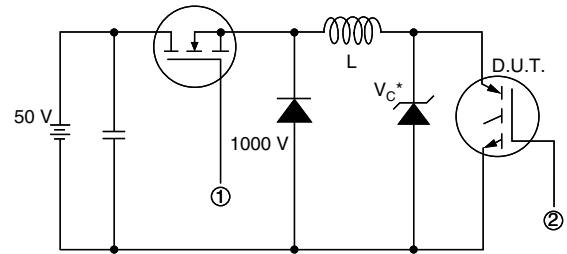


Fig. 12 - Turn-Off SOA



\* Driver same type as D.U.T.;  $V_C = 80\%$  of  $V_{CE}$  (max)

**Note:** Due to the 50 V power supply, pulse width and inductor will increase to obtain rated  $I_d$

Fig. 13a - Clamped Inductive Load Test Circuit

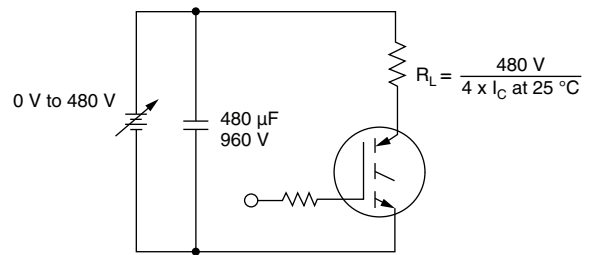
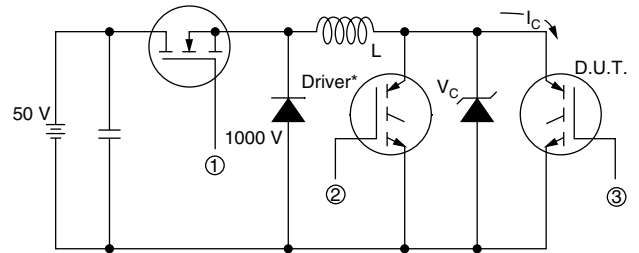


Fig. 13b - Pulsed Collector Current Test Circuit



\* Driver same type as D.U.T.,  $V_C = 480 \text{ V}$

Fig. 14a - Switching Loss Test Circuit

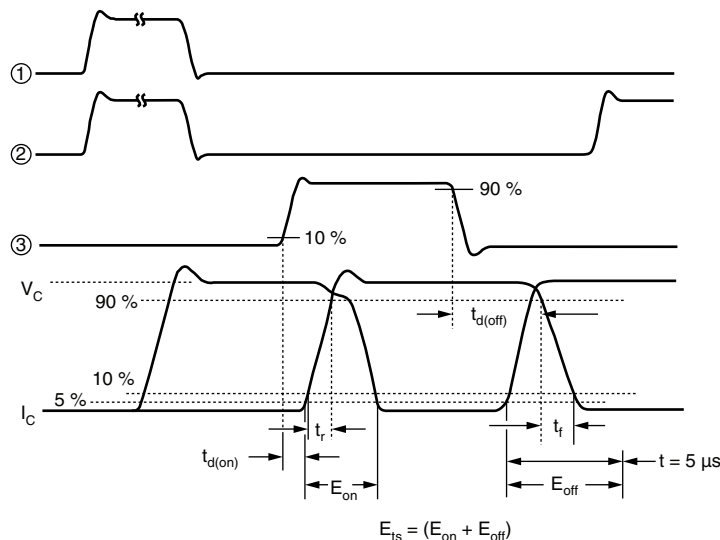
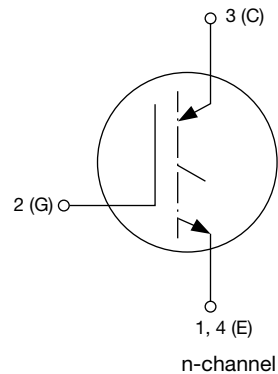


Fig. 14b - Switching Loss Waveforms

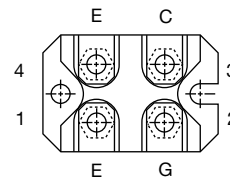
**ORDERING INFORMATION TABLE**

Device code	<b>VS-</b>	<b>G</b>	<b>A</b>	<b>200</b>	<b>S</b>	<b>A</b>	<b>60</b>	<b>U</b>	<b>P</b>
	①	②	③	④	⑤	⑥	⑦	⑧	⑨

- 1** - Vishay Semiconductors product
- 2** - Insulated gate bipolar transistor (IGBT)
- 3** - Generation 4, IGBT silicon, DBC construction
- 4** - Current rating (200 = 200 A)
- 5** - Single switch no diode
- 6** - SOT-227
- 7** - Voltage rating (60 = 600 V)
- 8** - Speed/type (U = ultrafast)
- 9** -
  - None = standard production
  - P = lead (Pb)-free

**CIRCUIT CONFIGURATION**


Lead assignment

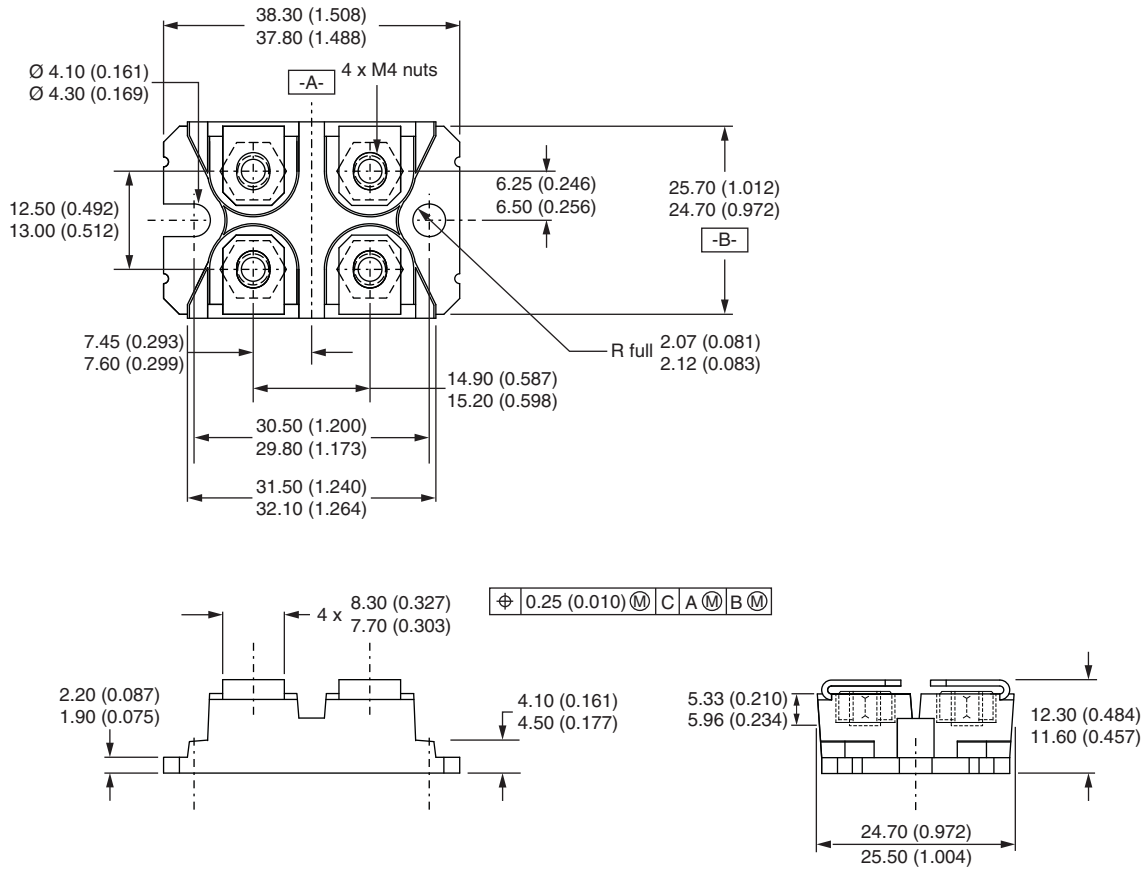

**LINKS TO RELATED DOCUMENTS**

Dimensions	<a href="http://www.vishay.com/doc?95425">www.vishay.com/doc?95425</a>
Packaging information	<a href="http://www.vishay.com/doc?95423">www.vishay.com/doc?95423</a>



### SOT-227 Generation 2

**DIMENSIONS** in millimeters (inches)



**Note**

- Controlling dimension: millimeter



## **Disclaimer**

ALL PRODUCT, PRODUCT SPECIFICATIONS AND DATA ARE SUBJECT TO CHANGE WITHOUT NOTICE TO IMPROVE RELIABILITY, FUNCTION OR DESIGN OR OTHERWISE.

Vishay Intertechnology, Inc., its affiliates, agents, and employees, and all persons acting on its or their behalf (collectively, "Vishay"), disclaim any and all liability for any errors, inaccuracies or incompleteness contained in any datasheet or in any other disclosure relating to any product.

Vishay makes no warranty, representation or guarantee regarding the suitability of the products for any particular purpose or the continuing production of any product. To the maximum extent permitted by applicable law, Vishay disclaims (i) any and all liability arising out of the application or use of any product, (ii) any and all liability, including without limitation special, consequential or incidental damages, and (iii) any and all implied warranties, including warranties of fitness for particular purpose, non-infringement and merchantability.

Statements regarding the suitability of products for certain types of applications are based on Vishay's knowledge of typical requirements that are often placed on Vishay products in generic applications. Such statements are not binding statements about the suitability of products for a particular application. It is the customer's responsibility to validate that a particular product with the properties described in the product specification is suitable for use in a particular application. Parameters provided in datasheets and / or specifications may vary in different applications and performance may vary over time. All operating parameters, including typical parameters, must be validated for each customer application by the customer's technical experts. Product specifications do not expand or otherwise modify Vishay's terms and conditions of purchase, including but not limited to the warranty expressed therein.

Except as expressly indicated in writing, Vishay products are not designed for use in medical, life-saving, or life-sustaining applications or for any other application in which the failure of the Vishay product could result in personal injury or death. Customers using or selling Vishay products not expressly indicated for use in such applications do so at their own risk. Please contact authorized Vishay personnel to obtain written terms and conditions regarding products designed for such applications.

No license, express or implied, by estoppel or otherwise, to any intellectual property rights is granted by this document or by any conduct of Vishay. Product names and markings noted herein may be trademarks of their respective owners.