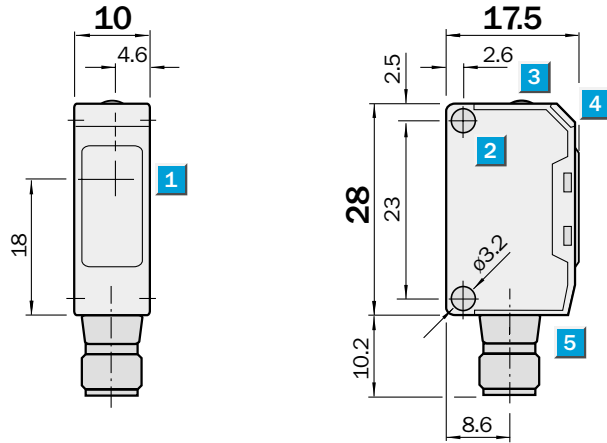
 **Scanning range**  
4.4 m

Through-beam photoelectric switches

- Slotted masks 0.5 mm, 1 mm and 2 mm for detection of small parts or for positioning tasks
- Adjustable sensitivity
- Direct voltage supply 10...30 V DC

**Dimensional drawing**

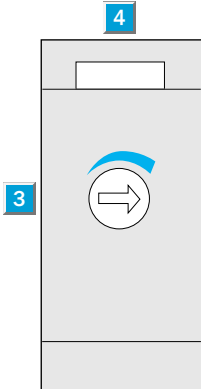


**Adjustments possible**

- WS/WE 150-P132
- WS/WE 150-N132
- WS/WE 150-P430
- WS/WE 150-N430

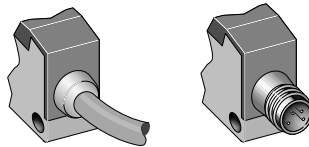
- 1** Centre of optical axis, sender (WS)  
Centre of optical axis, receiver (WE)
- 2** Mounting holes  $\varnothing$  3.2 mm
- 3** Sensitivity adjustment 270° (WE only)
- 4** LED indicator, red (WE only):  
Light received  $\geq$  switching threshold
- 5** M 8 plug – 4-pin or cable

www.DataSheet4U.com



**Connection types**

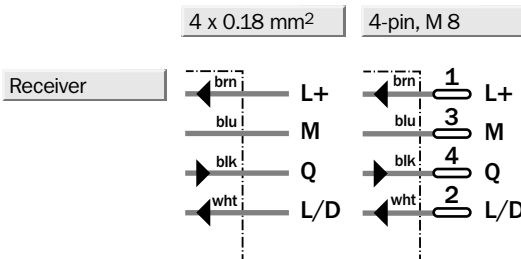
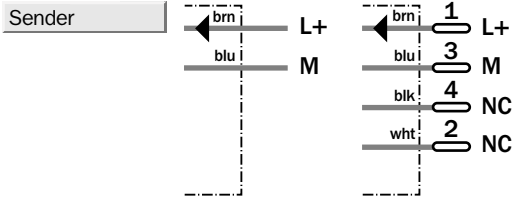
- WS/WE 150-P132    WS/WE 150-P430
- WS/WE 150-N132    WS/WE 150-N430



2 x 0.18 mm<sup>2</sup>    4-pin, M 8

Accessories	page
Cable receptacles	496
Mounting brackets Type A*	510
Slotted masks	556

\* included with delivery

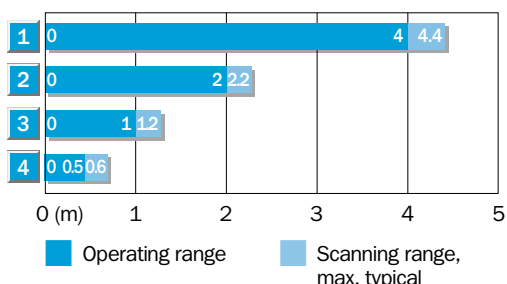


www.DataSheet4U.com

Technical data		WS/WE 150-	P 132	P 430	N 132	N 430
<b>Scanning range, max. typical</b>	4.4 m					
<b>Operating range</b>	4 m					
Operating range with mask,						
Aperture width 2.0 mm	2.0 m					
Aperture width 1.0 mm	1.0 m					
Aperture width 0.5 mm	0.5 m					
Sensitivity, adjustable	Potentiometer, 270°					
<b>Light source<sup>1)</sup>, light type</b>	LED, red light					
Light spot diameter	Approx. 400 mm at 4 mm					
Angle of dispersion of sender	Approx. 6°					
Angle of reception of receiver	Approx. 15°					
<b>Supply voltage V<sub>A</sub></b>	10...30 V DC <sup>2)</sup>					
Ripple <sup>3)</sup>	± 10 %					
Current consumption <sup>4)</sup> sender	≤ 15 mA					
receiver	≤ 20 mA					
<b>Switching outputs</b>	PNP, open collector: Q					
	NPN, open collector: Q					
Max. output current I <sub>A</sub>	100 mA					
Switching mode <sup>5)</sup>	Dark-/light-switching via control cable L/D					
	+ V <sub>S</sub> = light-switching					
	0 V = dark-switching					
Response time <sup>6)</sup>	≤ 0.5 ms					
Max. switching frequency <sup>7)</sup>	1000/s					
<b>Connection types</b> cable	PVC, 2 m <sup>8)</sup>					
sender WS	2 x 0.18 mm <sup>2</sup> , Ø 3.5 mm					
receiver WE	4 x 0.18 mm <sup>2</sup> , Ø 3.5 mm					
Plug	M 8 – 4-pin					
<b>VDE protection class<sup>9)</sup></b>	□					
<b>Circuit protection<sup>10)</sup></b>						
sender	A, B					
receiver	A, B, C, D					
<b>Enclosure rating</b>						
	IP 67					
<b>Ambient temperature T<sub>A</sub></b>						
	Operation – 25 °C...+ 55 °C					
	Storage – 40 °C...+ 70 °C					
<b>Weight</b>						
with cable 2 m	Sender: appr. 44 g, receiver: appr. 44 g					
with plug	Sender: appr. 7 g, receiver: appr. 7 g					
<b>Housing material</b>						
	Housing: ABS/optics: PC					

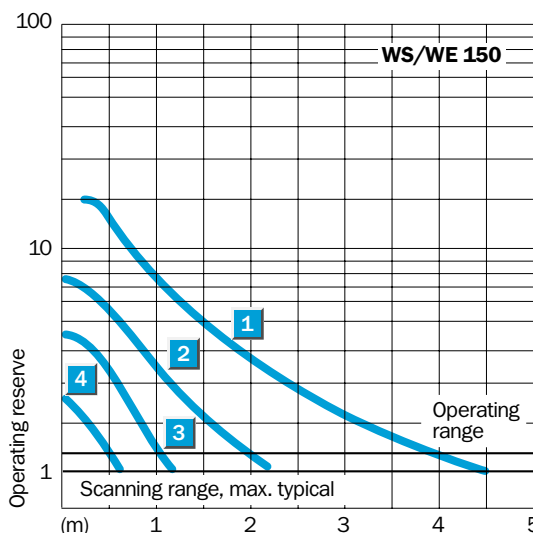
- 1) Average service life 100,000 h at T<sub>A</sub> = + 25 °C
- 2) Limit values
- 3) May not exceed or fall short of V<sub>S</sub> tolerances
- 4) Without load
- 5) Control cable open:  
NPN: light-switching  
PNP: dark-switching
- 6) Signal transit time with resistive load
- 7) With light/dark ratio 1:1
- 8) Do not bend below 0 °C
- 9) Reference voltage 50 V DC
- 10) A = V<sub>S</sub> connections reverse-polarity protected  
B = Inputs and outputs reverse-polarity protected
- C = Interference impulse suppression  
D = Outputs overcurrent and short-circuit protected
- 11) Part no. includes both sender and receiver!

**Scanning range and operating reserve**



**Reduction in scanning range with slotted masks**

1	Without slotted mask
2	Mask aperture width 2.0 mm
3	Mask aperture width 1.0 mm
4	Mask aperture width 0.5 mm



**Order information**

Type	Part no. <sup>11)</sup>
WS/WE 150-P132	6 011 030
WS/WE 150-P430	6 011 032
WS/WE 150-N132	6 011 027
WS/WE 150-N430	6 011 029