



SPECIFICATION

MODULE NO.: WF62ATXGRDNN0#

General Specifications

Item	Dimension	Unit
Size	6.2	inch
Dot Matrix	640 x 320	dots
Module dimension	170.32 x 88.3 x 5.3	mm
Active area	140 x 70	mm
Dot pitch	0.21875 x 0.21875	mm
LCD type	TFT, Normally Black, Transmissive	
View Direction	Wide View	
Gray Scale	16 Gray scale (4BPP)/ 4 Gray scale (2BPP)/ 2 Gray scale (1BPP)	
Driver IC	ST7511U	
Backlight Type	LED, Normally White	
With /Without TP	Without TP	
Surface	Glare	

* Mono tone slight changed by temperature and driving voltage.

Absolute Maximum Ratings

Item	Symbol	Min	Typ	Max	Unit
Operating Temperature	TOP	-20	—	+70	°C
Storage Temperature	TST	-30	—	+80	°C

Electrical Characteristics

Operating conditions:

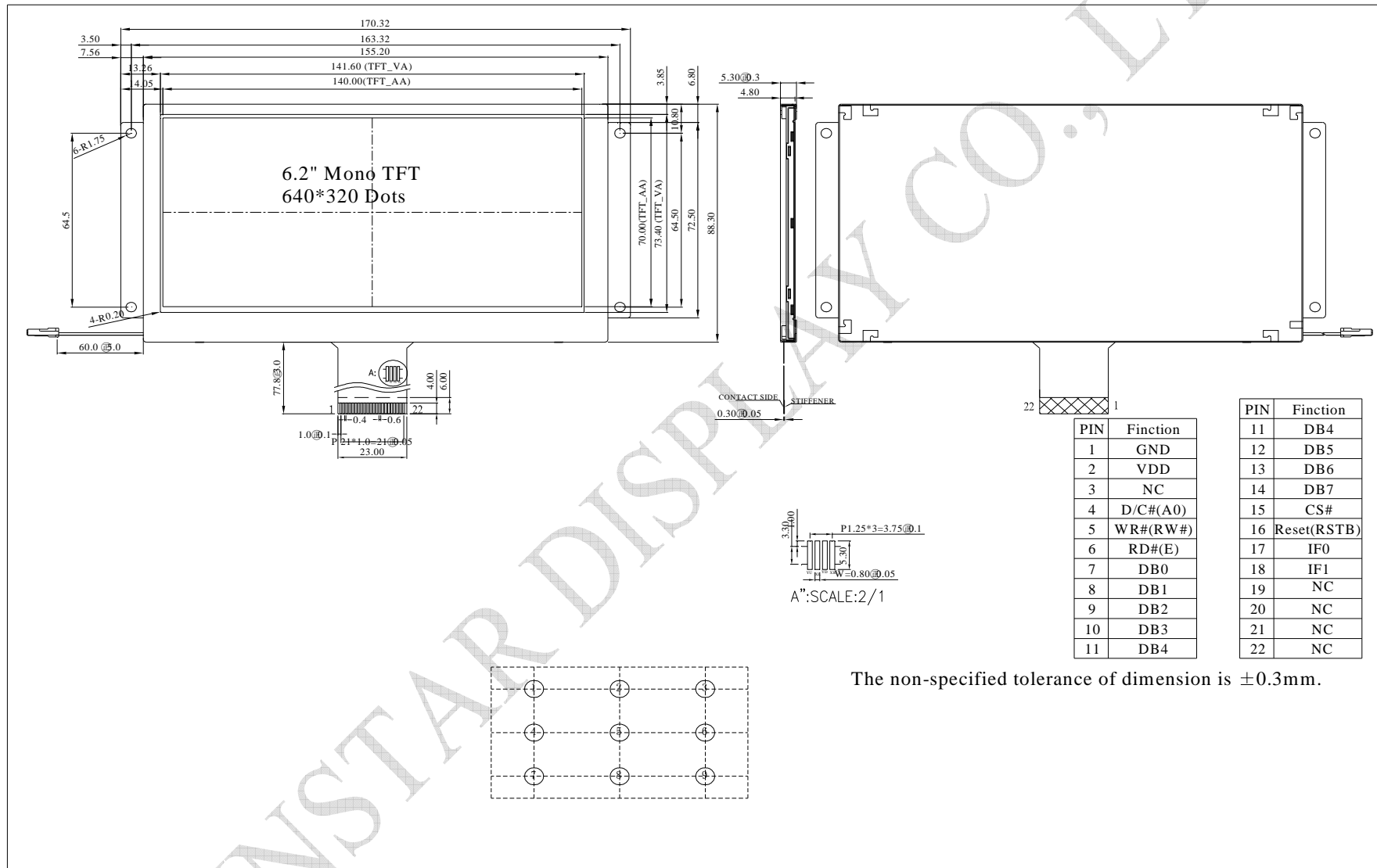
Item	Symbol	Condition	Min	Typ	Max	Unit
Supply Voltage For LCM	VDD	—	3.0	3.3	3.6	V
Supply Current For LCM	IDD	—	—	25	38	mA
Power Consumption	—	—	—	83	137	mW

Interface

LCM PIN Definition

Pin	Symbol	Function
1	GND	System ground
2	VDD	Power Supply : +3.3V
3	NC	No connect
4	A0	Data/Command select
5	/WR(R/W)	Write strobe signal
6	/RD(E)	Read strobe signal
7	DB0	Data bus
8	DB1	Data bus
9	DB2	Data bus
10	DB3	Data bus
11	DB4	Data bus
12	DB5	Data bus
13	DB6	Data bus
14	DB7	Data bus
15	/CS	Chip select
16	/RESET(RSTB)	Hardware reset
17	IF0	Mode select
18	IF1	
19	NC	No connect
20	NC	No connect
21	NC	No connect
22	NC	No connect

Contour Drawing



The non-specified tolerance of dimension is $\pm 0.3\text{mm}$.