

# 1. INTRODUCTION

## 1.1 Scope

The WM201-RTL8723-1 CSR is a highly integrated 11b/g/n WLAN and Bluetooth v2.1 / 3.0 / 4.0 single chip solution with Wi-Fi PCI express interface and BT USB interface that combines MAC/1T1R baseband PHY/ RF that support up to WLAN 150Mbps PHY rate. The Bluetooth supports BT 2.1+EDR / BT3.0+HS / BT4.0 Low Energy dual mode for easily establish the Bluetooth connection. The enhanced Wi-Fi/BT coexistence control for better RF transmission quality in different BT profiles.

## 1.2 Features

### General

- Complies with PCI Express Base Specification Revision 1.1 for WLAN
- Complies with USB 1.1 Specification Revision 1.1 for Bluetooth.
- Form factor: Half-Mini card.
- Bus Interface: Wi-Fi: PCIe bus interface. BT: USB bus interface.
- Windows 7 Operation system supported only.
- Enhanced Wi-Fi/BT coexistence control for better transmission quality.
- RoHS compliant.

### WLAN Features

- Complete 802.11n 1T1R (1x1) solution for 2.4GHz band
- Backward compatible with 802.11b/g devices while operating at 802.11n data rates.
- Support for 150Mbps PHY rate.
- 20MHz/40MHz bandwidth.
- WEP 64/128, WPA, WPA2, TKIP, AES.
- QoS-WMM, WMM-PS.
- WPS, PIN, PBC.
- Supports 16 BSSIDs.
- Cisco CCX Support up to v5.0

## Bluetooth Features

- BT v.2.1+EDR/BT 3.0/ BT 4.0 Dual-mode low energy.
- Class1, Class 2, Class 3 supported.
- Measured Maximum TX output power: 5dBm, maximum distance range 20m.(Class1 Level)
- RoHS compliant.

## 1.3 Module Appearance



Top View



Bottom View

## 1.4 Model Definition

|                       |  |
|-----------------------|--|
| <b>Model Name</b>     | <b>WM201-RTL8723</b>   |
| <b>RF Connector #</b> | 2 (IPEX)   |
| <b>Antenna design</b> | External Antenna connection via IPEX connector.<br>(note: external antenna is excluded for module) |

## 2. SPECIFICATION

### 2.1 HARDWARE SPECIFICATION

#### 2.1.1 Wi-Fi Specification

|                           |  |
|---------------------------|--|
| <b>Standard</b>           | IEEE 802.11 b/g/n Wireless Local Area Networks       |
| <b>WLAN Security</b>      | WEP 64/128, WPA, WPA2, TKIP, AES.                    |
| <b>WLAN PHY Rate</b>      | Max.150Mbps PHY Rate for both transmit and receiving |
| <b>RF Frequency Range</b> | 2.412G~2.484GHz                                      |
| <b>Operating Voltage</b>  | 3.3V   |
| <b>Interface</b>          | PCIe bus interface 1.1                               |

#### 2.1.2 Bluetooth Specification

|                            |   |
|----------------------------|---|
| <b>Standard</b>            | Bluetooth v2.1+EDR / v3.0+HS / v4.0 BLE dual mode |
| <b>Radio Technology</b>    | FHSS (Frequency Hopping Spread Spectrum)          |
| <b>Basic Data Rate</b>     | 1Mbps (GFSK)                                      |
| <b>Enhanced Data Rate</b>  | 2Mbps (DQPSK); 3Mbps(8-DPSK)                      |
| <b>Operating Frequency</b> | 2.45GHz (2.402 ~ 2.480GHz), ISM band              |
| <b>Channel number</b>      | 79 Channels , 1MHz bandwidth                      |
| <b>Operating Voltage</b>   | 3.3V  |
| <b>Interface</b>           | USB bus interface 1.1                             |

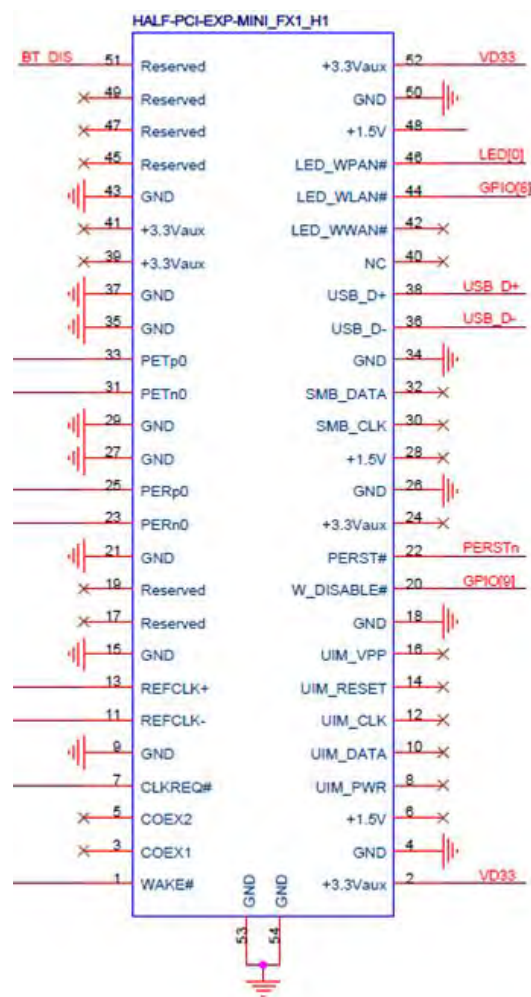
#### 2.1.3 Board Specification

|                      |  |
|----------------------|--|
| <b>WLAN Chip</b>     | Realtek RTL8723AE WLAN+BT Single Chip          |
| <b>Antenna</b>       | IPEX connector for external antenna connection |
| <b>Form Factor</b>   | Half Mini Card                                 |
| <b>PCB Dimension</b> | 29.85mm(W)x26.65mm(H)x1mm(D)                   |

## 2.1.4 Environmental

|           |   |
|-----------|---|
| Operating | Operating temperature: 0 to 85 degree C<br>Relative Humidity : 5-90% (non-condensing) |
| Storage   | Temperature: -20 to 85 degree C<br>Relative Humidity : 5-95% (non-condensing)         |

## 2.1.5 PIN Define



| PIN | Definition | Remark                                 |
|-----|------------|--|
| 1   | WAKE#      | Power Management Event:<br>active low. |
| 3   | COEX1      |  |
| 5   | COEX2      |  |
| 7   | CLKREQ#    | Reference Clock Request<br>Signal      |
| 9   | GND        | GND                                    |
| 11  | REFCLK-    |  |
| 13  | REFCLK+    |  |
| 15  | GND        | GND                                    |
| 17  | RESERVED   | NU <sup>[1]</sup>                      |
| 19  | RESERVED   | NU                                     |
| 21  | GND        | GND                                    |
| 23  | PERn0      |  |
| 25  | PETp0      |  |
| 27  | GND        | GND                                    |
| 29  | GND        | GND                                    |
| 31  | PETn0      |  |
| 33  | PETp0      |  |
| 35  | GND        | GND                                    |
| 37  | GND        | GND                                    |
| 39  | +3.3Vaux   | NU                                     |
| 41  | +3.3Vaux   | NU                                     |
| 43  | GND        | GND                                    |
| 45  | RESERVED   | NU                                     |
| 47  | RESERVED   | NU                                     |
| 49  | RESERVED   | NU                                     |
| 51  | BT_DISABE# | 0: BT Radio OFF<br>1: BT Radio ON      |

| PIN | Definition | Remark   |
|-----|------------|--|
| 2   | +3.3V      | +3.3V  |
| 4   | GND        | GND  |
| 6   | +1.5V      | NU   |
| 8   | UIM_PWR    | NU   |
| 10  | UIM_DATA   | NU   |
| 12  | UIM_CLK    | NU   |
| 14  | UIM_RESET  | NU   |
| 16  | UIM_VPP    | NU   |
| 18  | GND        | GND  |
| 20  | W_DISABE#  | 0: WiFi Radio OFF<br>1: WiFi Radio ON                              |
| 22  | PERST#     | 0: to Disable WiFi (power off) <sup>[2]</sup><br>1: to Enable WiFi |
| 24  | +3.3Vaux   | NU   |
| 26  | GND        | GND  |
| 28  | +1.5V      | NU   |
| 30  | SMB_CLK    | NU   |
| 32  | SMB_DATA   | NU   |
| 34  | GND        | GND  |
| 36  | USB_D-     | USB_D-   |
| 38  | USB_D+     | USB_D+   |
| 40  | NC         | NU   |
| 42  | LED_WWAN#  | NU   |
| 44  | LED_WLAN#  | LED for WiFi   |
| 46  | LED_WPAN#  | LED for WPAN   |
| 48  | +1.5V      | NU   |
| 50  | GND        | GND  |
| 52  | +3.3V      | +3.3V  |

## 2.1.6 Power Consumption

| WLAN Mode<br>(2.4GHz frequency band) | Power consumption (mA) / 3.3V |          |           |      |         |
|--------------------------------------|-------------------------------|----------|-----------|------|---------|
|                                      | Uplink                        | Downlink | Radio off | Idle | Disable |
| 11b mode                             | 273                           | 263      | 10        | 230  | 10      |
| 11g mode                             | 272                           | 261      | 10        | 230  | 10      |
| 11n HT20 mode                        | 271                           | 263      | 10        | 230  | 10      |
| 11n HT40 mode                        | 272                           | 262      | 10        | 230  | 10      |

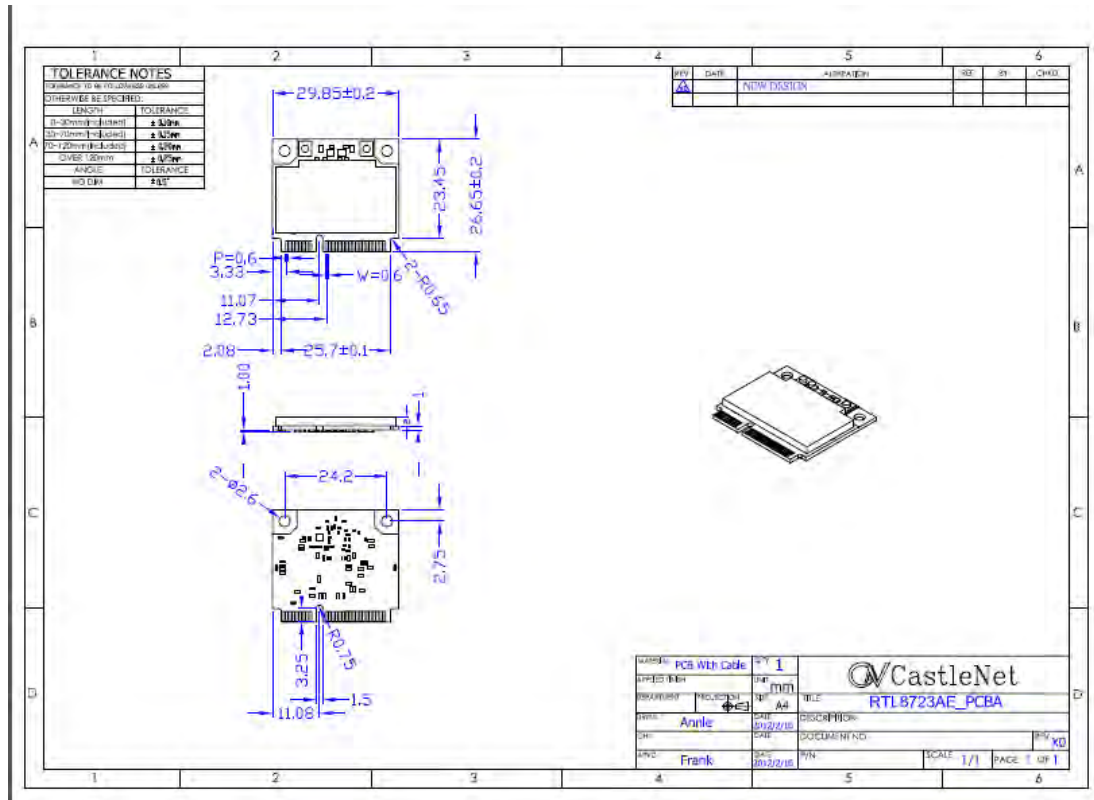
| Bluetooth                      | Power consumption (mA) / 3.3V |
|--------------------------------|-------------------------------|
| Continuous TX Supply Current   | 75mA                          |
| Continuous RX Supply Current   | 67mA                          |
| Bluetooth Power On<br>(RF off) | 20mA                          |
| Idle                           | 30mA                          |

## 2.2 MECHANICAL SPECIFICATION

### 2.2.1 Board Dimension

|   |                                    |                                |
|---|------------------------------------|--------------------------------|
| <b>Form factor</b>                              | Half-Mini Card.                    |                                |
| <b>PCB Dimension</b>                            | 29.85mm(W)x26.65mm(H) (+/- 0.20mm) |                                |
| <b>PCB thickness</b>                            | 1.0mm (+/-0.10mm)                  |                                |
| <b>SMD</b>                                      | Single side                        |                                |
| <b>Max. height of components<br/>(from PCB)</b> | Top side                           | 3.0mm ( shielding case: 2.0mm) |
|   | Bottom side                        | 0mm                            |

## 2.2.2 Mechanical Drawing (unit: mm)



## 2.3 SOFTWARE SPECIFICATION

### 2.3.1 Operating system

- Windows: Win7 only.

### 2.3.2 Bluetooth Software Stack

- BT software stack is provided by Realtek.