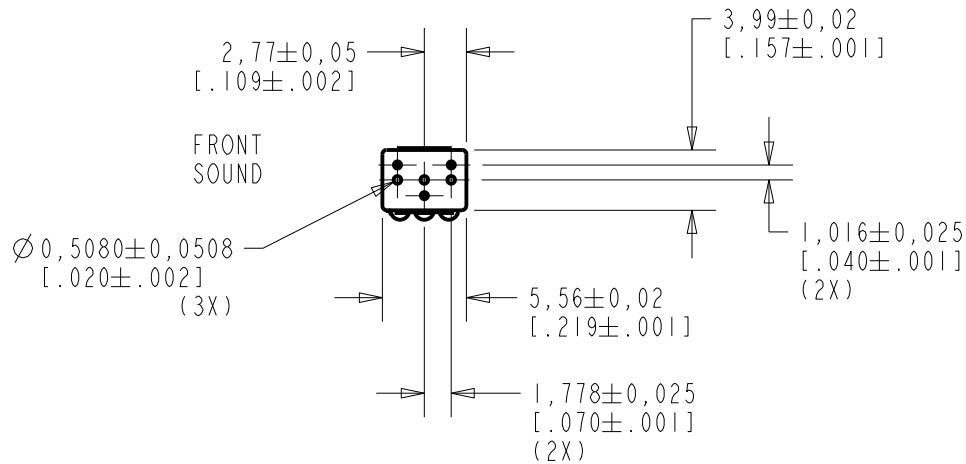
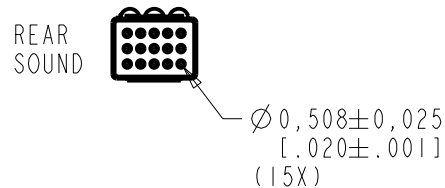
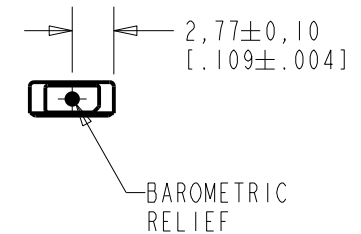
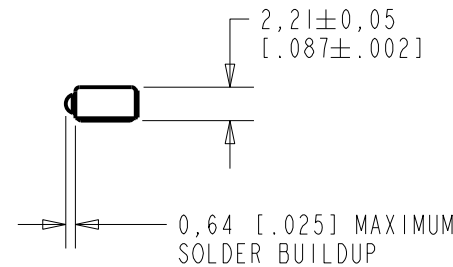
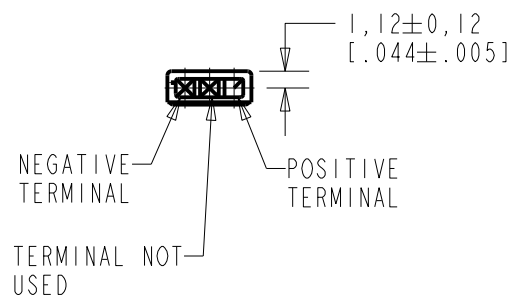


WP-23501-000
SHT 1.1



NOTE:

- INCREASED PRESSURE AT THE FRONT SOUND INLET CAUSES A POSITIVE GOING VOLTAGE TO APPEAR AT THE OUTPUT TERMINAL, RELATIVE TO THE NEGATIVE TERMINAL.



NOMINAL WEIGHT
.13 GRAM

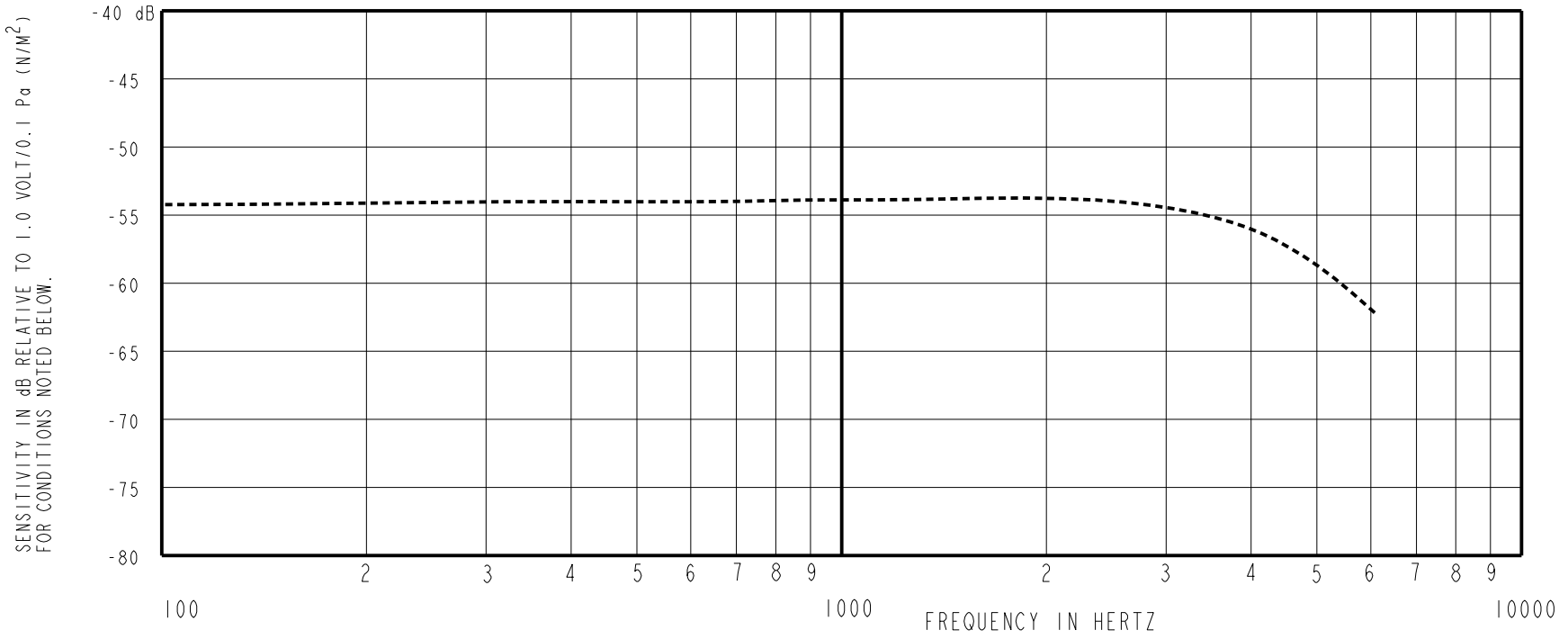
DIMENSIONS IN MILLIMETERS [INCHES]

Revision	C.O. #	Implementation Date	RELEASE LEVEL	REVISION
B	MI0103941	12-8-10	Active	B
A	MI0100924	11-23-05		

SCALE:	2:1		DR. BY	DATE
DO NOT SCALE DRAWING			DMS	11/23/05
TITLE:	MICROPHONE	WP-23501-000	GJP	11/27/05
	OUTLINE DRAWING	SHT 1.1	APP. BY	DATE
			GJP	11/27/05

KNOWLES ELECTRONICS
ITASCA, ILLINOIS U.S.A.

WP-23501-000
 SHT 2.1

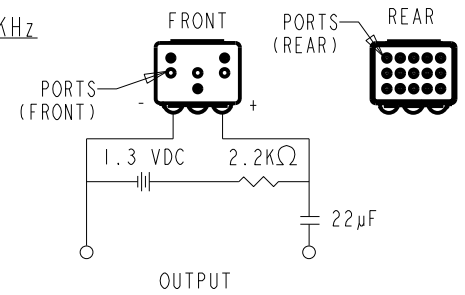


FREQUENCY	SENSITIVITY		MAX.
	MIN.	NOM.	
100	---	-54.0	---
1000	-57.0	-54.0	-51.0
4000	---	-56.0	---

DEVICE CONFORMITY	
RANGE OF DEVIATION FROM 1 KHZ	
-2.0	+2.0
0.0	0.0
-6.0	0.0

- NOTES:
- CASE CONNECTED TO NEGATIVE TERMINAL.
 - MICROPHONE TO BE FUNCTIONAL WITH 10 VDC SUPPLY.
 - SENSITIVITY VALUES INDICATED ON THIS SPECIFICATION ARE VALID AT 50% HUMIDITY.
 - PRESSURE DIFFERENCE SENSITIVITY TESTED WITH REAR SOUND PORT SEALED TO AIR VOLUME OF AT LEAST 0.5 CC.
 - MICROPHONE WILL SURVIVE SUBMERSION IN 3M OF WATER.

DC SUPPLY	AMPLIFIER CURRENT DRAIN	OUTPUT IMPEDANCE OHMS		
		MIN.	NOM.	MAX.
1.3V	300µA MAX.	1500	2500	3500



Revision	C.O. #	Implementation Date	RELEASE LEVEL	REVISION
B	MI0103941	12-8-10	Active	B
A	MI0100924	11-23-05		

KNOWLES ELECTRONICS
 ITASCA, ILLINOIS U.S.A.

SCALE: 2:1	DR. BY DATE
DO NOT SCALE DRAWING	DMS 11/23/05
TITLE: MICROPHONE	CK. BY DATE
WP-23501-000	GJP 11/27/05
PERFORMANCE SPECIFICATION	APP. BY DATE
SHT 2.1	GJP 11/27/05