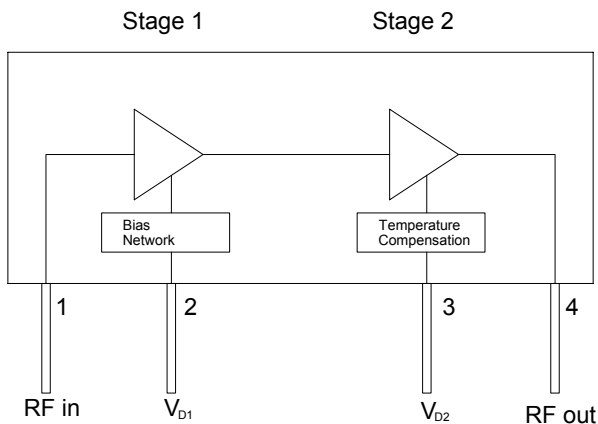




## Product Description

Sirenza Microdevices' **XD010-12S-D4F** 15W power module is a robust 2-stage Class A/AB amplifier module for use in the driver stages of cellular base station power amplifiers. The power transistors are fabricated using Sirenza's latest, high performance LDMOS process. It is a drop-in, no-tune, solution for high power applications requiring high efficiency, excellent linearity, and unit-to-unit repeatability. This unit operates from a single voltage supply and has internal temperature compensation of the bias voltage to ensure stable performance over the full temperature range. It is internally matched to 50 ohms.

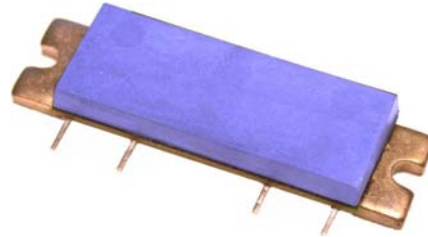
## Functional Block Diagram



Case Flange = Ground

## XD010-12S-D4F

**869-894 MHz Class AB  
15W Power Amplifier Module**



### Product Features

- 50  $\Omega$  RF impedance
- 15W Output  $P_{1dB}$
- Single Supply Operation : Nominally 28V
- High Gain: 32 dB at 880 MHz
- Robust 8000V ESD (HBM), Class 3B
- XeMOS II LDMOS FETS
- Temperature Compensation

### Applications

- Base Station PA driver
- Repeater
- CDMA / WCDMA
- GSM / EDGE

## Key Specifications

Symbol	Parameter	Unit	Min.	Typ.	Max.
Frequency	Frequency of Operation	MHz	869	-	894
$P_{1dB}$	Output Power at 1dB Compression, 880MHz	W	12	15	-
Gain	Gain at 1W Output Power, 880MHz	dB	30	32	-
Gain Flatness	Peak to Peak Gain Variation, 869 - 894MHz	dB	-	0.2	1.0
IRL	Input Return Loss 1W Output Power, 869 - 894MHz	dB	14	17	-
Efficiency	Drain Efficiency at 12W CW, 880MHz	%	27	33	-
	Drain Efficiency at 2W CDMA (Single Carrier IS-95)	%	-	12	-
	Drain Efficiency at 1W CDMA (Single Carrier IS-95)	%	-	7	-
Linearity	ACPR at 2W CDMA (Single Carrier IS-95, 9 Ch Fwd, Offset=750KHz, ACPR Integrated Bandwidth), 880MHz	dB	-	-51	-
	ALT-1 at 2W CDMA (Single Carrier IS-95, 9 Ch Fwd, Offset=1980KHz, ACPR Integrated Bandwidth), 880MHz	dB	-	-70	-
	3 <sup>rd</sup> Order IMD at 12W PEP (Two Tone), 880MHz	dBc	-	-36	-32
	3 <sup>rd</sup> Order IMD at 1W PEP (Two Tone), 880MHz	dBc	-	-45	-
Delay	Signal Delay from Pin 1 to Pin 4	nS	-	2.5	-
Phase Linearity	Deviation from Linear Phase (Peak to Peak)	Deg	-	0.5	-
$R_{TH,j-1}$	Thermal Resistance Stage 1 (Junction to Case)	$^{\circ}C/W$	-	11	-
$R_{TH,j-2}$	Thermal Resistance Stage 2 (Junction to Case)	$^{\circ}C/W$	-	4	-

Test Conditions  $Z_{in} = Z_{out} = 50\Omega$ ,  $V_D = 28.0V$ ,  $I_{DQ1} = 230\text{ mA}$ ,  $I_{DQ2} = 150\text{ mA}$ ,  $T_{Flange} = 25^{\circ}C$

1625-1675 The information provided herein is believed to be reliable at press time. Sirenza Microdevices assumes no responsibility for inaccuracies or omissions. Sirenza Microdevices assumes no responsibility for the use of this information, and all such information shall be entirely at the user's own risk. Prices and specifications are subject to change without notice. No patent rights or licenses to any of the circuits described herein are implied or granted to any third party. Sirenza Microdevices does not authorize or warrant any Sirenza Microdevices product for use in life-support devices and/or systems. Copyright 2003 Sirenza Microdevices, Inc. All worldwide rights reserved.

303 S. Technology Court,  
Broomfield, CO 80021

Phone: (800) SMI-MMIC

1

<http://www.sirenza.com>  
EDS-102934 Rev C

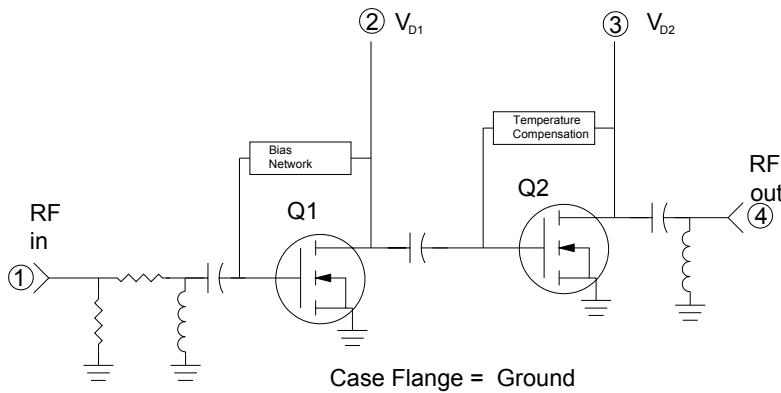
**Quality Specifications**

Parameter		Unit	Typical
ESD Rating	Human Body Model, JEDEC Document - JESD22-A114-B	V	8000
MTTF	85°C Leadframe, 200°C Channel	Hours	1.2 X 10 <sup>6</sup>

**Pin Description**

Pin #	Function	Description
1	RF Input	Module RF input. This pin is internally connected to DC ground. Do not apply DC voltages to the RF leads. Care must be taken to protect against video transients that may damage the active devices.
2	V <sub>D1</sub>	This is the drain voltage for the first stage. Nominally +28Vdc
3	V <sub>D2</sub>	This is the drain voltage for the 2 <sup>nd</sup> stage of the amplifier module. The 2 <sup>nd</sup> stage gate bias is temperature compensated to maintain constant quiescent drain current over the operating temperature range. See Note 1.
4	RF Output	Module RF output. This pin is internally connected to DC ground. Do not apply DC voltages to the RF leads. Care must be taken to protect against video transients that may damage the active devices.
Flange	Gnd	Exposed area on the bottom side of the package needs to be mechanically attached to the ground plane of the board for optimum thermal and RF performance. See mounting instructions in application note AN-060 on Sirenza's web site.

**Simplified Device Schematic**



**Absolute Maximum Ratings**

Parameters	Value	Unit
1 <sup>st</sup> Stage Bias Voltage (V <sub>D1</sub> )	35	V
2 <sup>nd</sup> Stage Bias Voltage (V <sub>D2</sub> )	35	V
RF Input Power	+20	dBm
Load Impedance for Continuous Operation Without Damage	5:1	VSWR
Output Device Channel Temperature	+200	°C
Operating Temperature Range	-20 to +90	°C
Storage Temperature Range	-40 to +100	°C

Operation of this device beyond any one of these limits may cause permanent damage. For reliable continuous operation see typical setup values specified in the table on page one.

**Note 1:**

The internally generated gate voltage is thermally compensated to maintain constant quiescent current over the temperature range listed in the data sheet. No compensation is provided for gain changes with temperature. This can only be accomplished with AGC external to the module.

**Note 2:**

Internal RF decoupling is included on all bias leads. No additional bypass elements are required, however some applications may require energy storage on the drain leads to accommodate time-varying waveforms.

**Note 3:**

This module was designed to have its leads hand soldered to an adjacent PCB. The maximum soldering iron tip temperature should not exceed 700° C, and the soldering iron tip should not be in direct contact with the lead for longer than 10 seconds. Refer to app note AN060 ([www.sirenza.com](http://www.sirenza.com)) for further installation instructions.



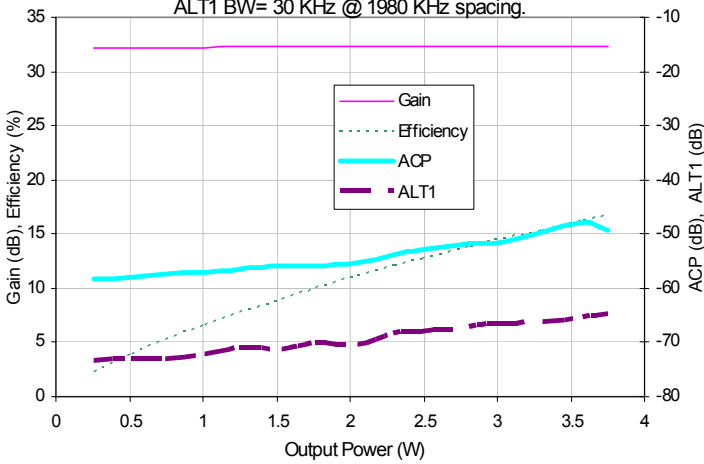
**Caution: ESD Sensitive**

Appropriate precaution in handling, packaging and testing devices must be observed.

**Typical Performance Curves**

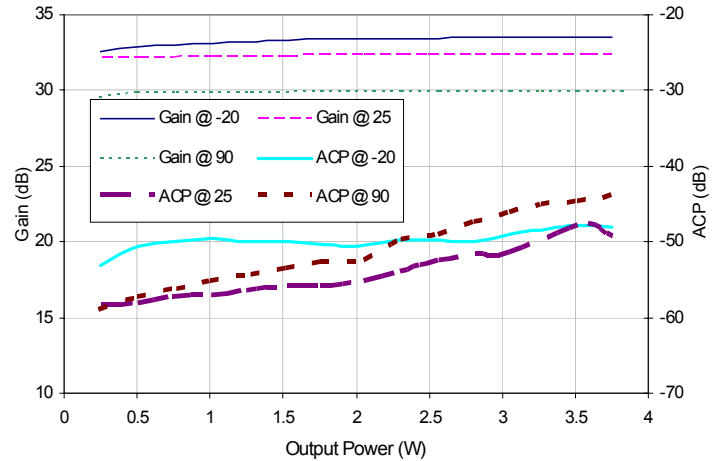
**Gain, Efficiency, ACP, ALT1 vs. Output Power**

Freq=881 MHz, Vdd=28 V, T<sub>Flange</sub>=25 °C  
 IS95 standard, channel BW= 1.23 MHz.  
 ADJ BW= 30 KHz @ 750 KHz spacing.  
 ALT1 BW= 30 KHz @ 1980 KHz spacing.



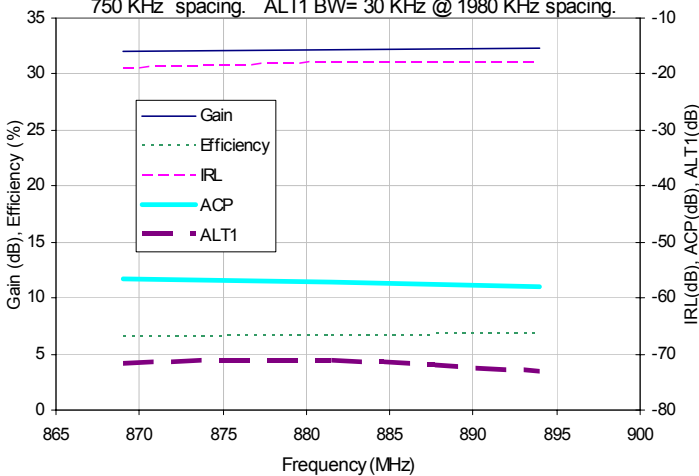
**Gain, ACP vs. Output Power over Temperature**

Freq=881 MHz, Vdd=28 V, T<sub>Flange</sub>=-20 °C, 25 °C, 90 °C  
 IS95 standard, channel BW= 1.23 MHz. ADJ BW= 30 KHz @  
 750 KHz spacing. ALT1 BW= 30 KHz @ 1980 KHz spacing.



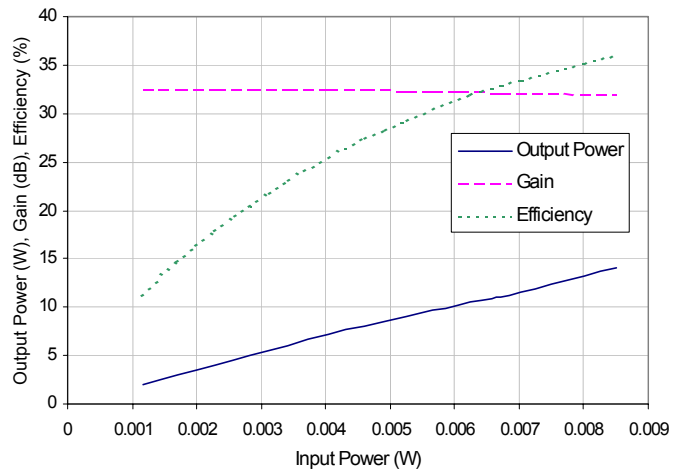
**Gain, Efficiency, IRL, ACP, ALT1 vs. Frequency**

Output Power= 1 Watt Vdd=28 V, T<sub>Flange</sub>=25 °C  
 IS95 standard, channel BW= 1.23 MHz. ADJ BW= 30 KHz @  
 750 KHz spacing. ALT1 BW= 30 KHz @ 1980 KHz spacing.



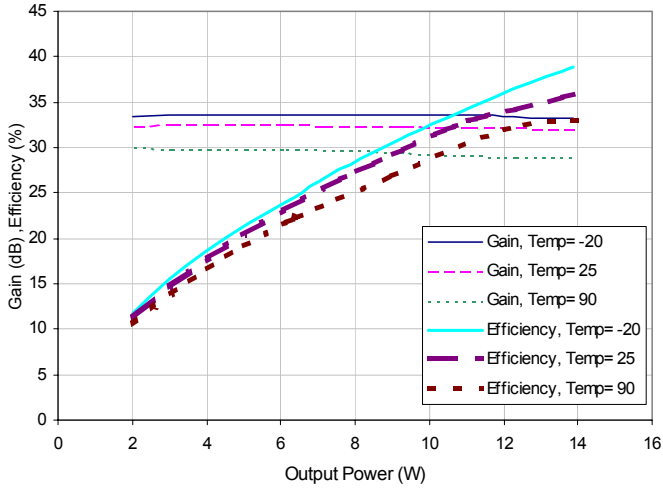
**Output Power, Gain, Efficiency vs. Input Power**

Freq=881 MHz, Vdd=28 V, T<sub>Flange</sub>=25 °C

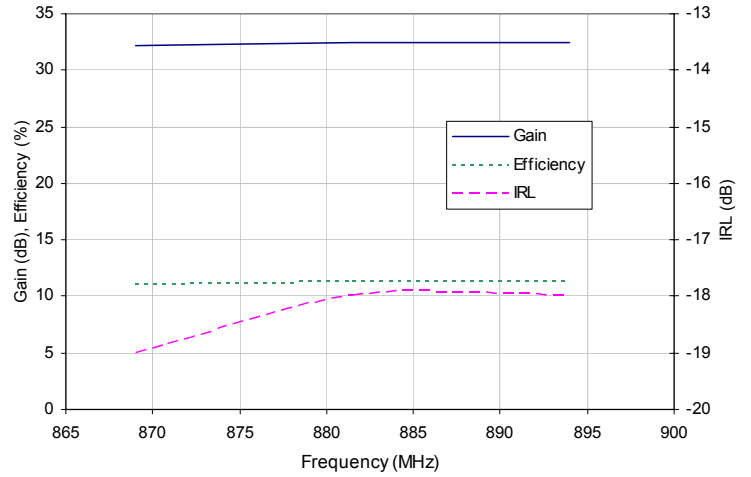


**Typical Performance Curves (cont'd)**

**Gain, Efficiency vs. Output Power over Temperature**  
 Freq=881 MHz, Vdd=28 V, T<sub>Flange</sub>=-20 °C, 25 °C, 90 °C

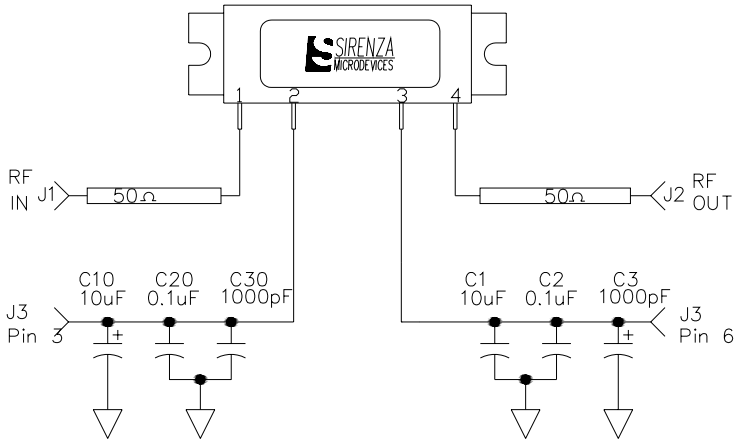


**Gain, Efficiency, IRL vs. Frequency**  
 Output Power=1 Watt, Vdd=28 V, T<sub>Flange</sub>=25 °C



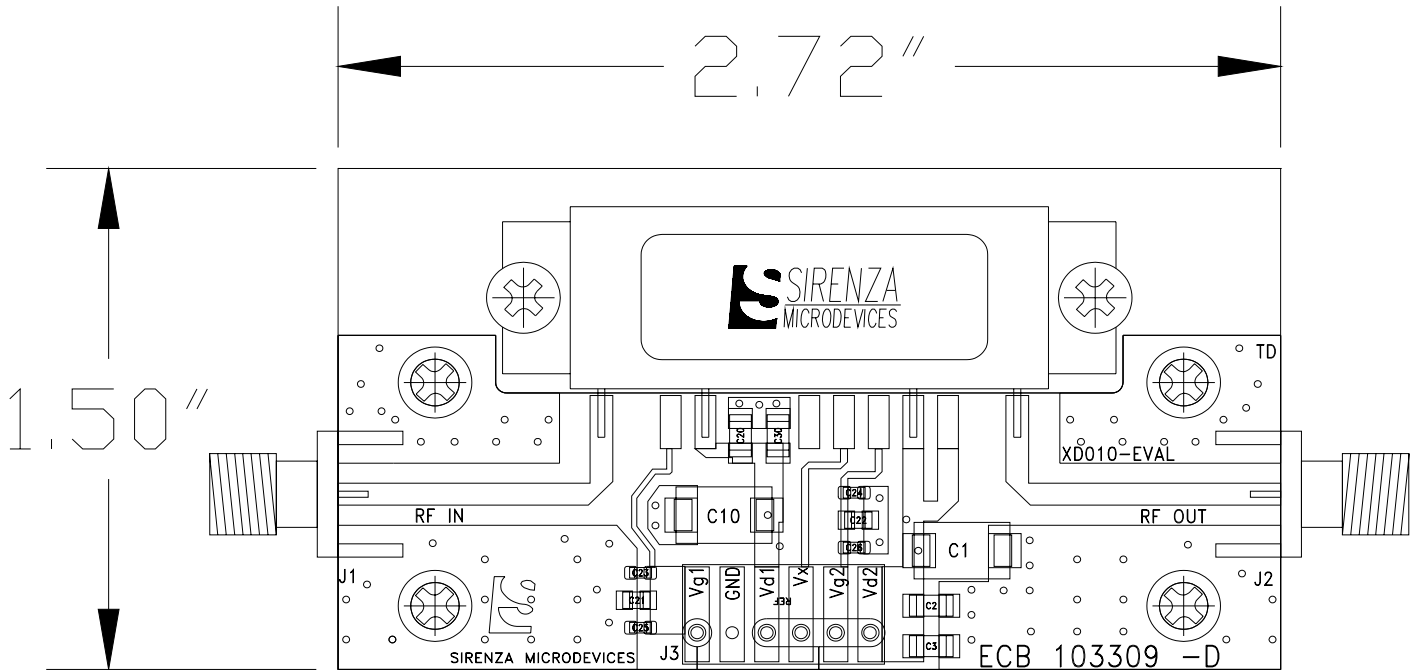
**Test Board Schematic with module connections shown**

**Test Board Bill of Materials**



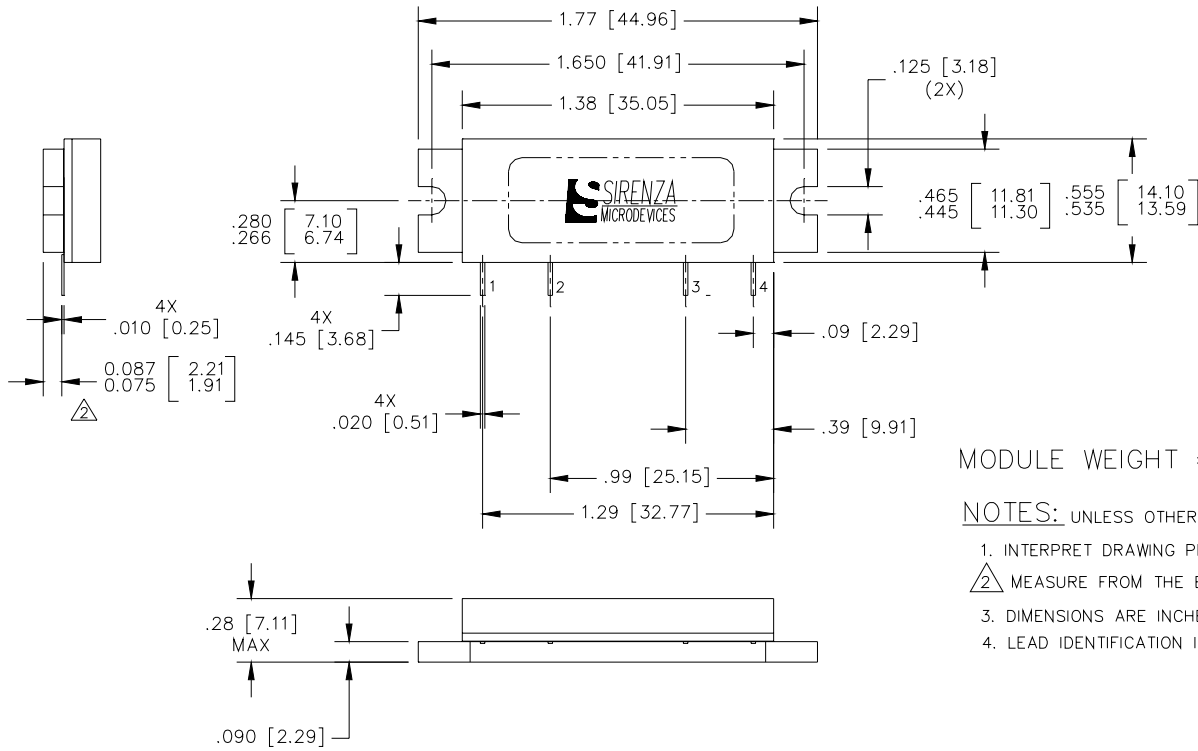
Component	Description	Manufacturer
PCB	Rogers 4350, $\epsilon_r=3.5$ Thickness=30mils	Rogers
J1, J2	SMA, RF, Panel Mount Tab W / Flange	Johnson
J3	MTA Post Header, 6 Pin, Rectangle, Polarized, Surface Mount	AMP
C1, C10	Cap, 10µF, 35V, 10%, Tant, Elect, D	Kemet
C2, C20	Cap, 0.1µF, 100V, 10%, 1206	Johanson
C3, C30	Cap, 1000pF, 100V, 10%, 1206	Johanson
C25, C26	Cap, 68pF, 250V, 5%, 0603	ATC
C21, C22	Cap, 0.1µF, 100V, 10%, 0805	Panasonic
C23, C24	Cap, 1000pF, 100V, 10%, 0603	AVX
Mounting Screws	4-40 X 0.250"	Various

**Test Board Layout**



To receive Gerber files, DXF drawings, a detailed BOM, and assembly recommendations for the test board with fixture, contact applications support at [support@sirenza.com](mailto:support@sirenza.com). Data sheet for evaluation circuit (XD010-EVAL) available from Sirenza website.

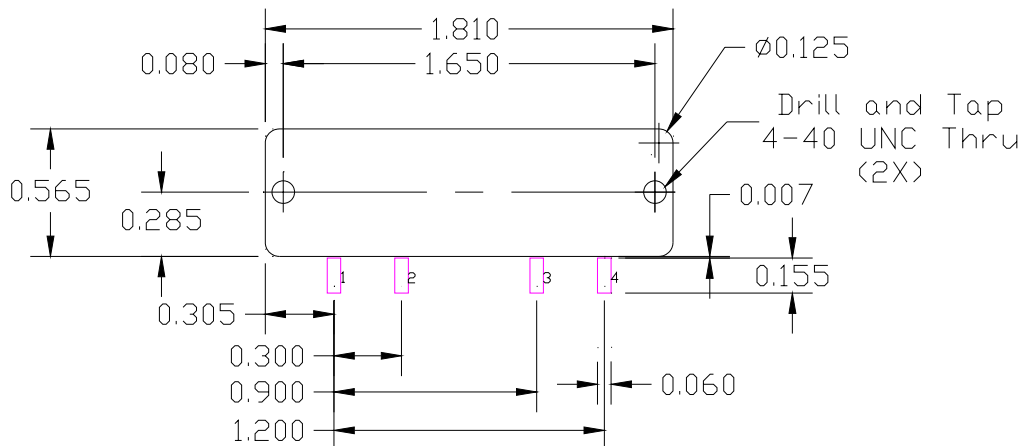
**Package Outline Drawing**



MODULE WEIGHT = 12gm Nominal

- NOTES:** UNLESS OTHERWISE SPECIFIED
1. INTERPRET DRAWING PER ANSI Y14.5.
  2. MEASURE FROM THE BOTTOM OF THE LEADS.
  3. DIMENSIONS ARE INCHES [MM].
  4. LEAD IDENTIFICATION IS FOR REFERENCE ONLY.

**Recommended PCB Cutout and Landing Pads for the D4F Package**



**Note 3:** Dimensions are in inches

Refer to Application note AN-060 "Installation Instructions for XD Module Series" for additional mounting info. App note available at [www.sirenza.com](http://www.sirenza.com)