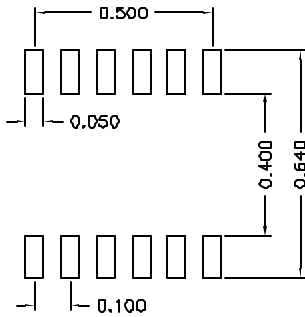
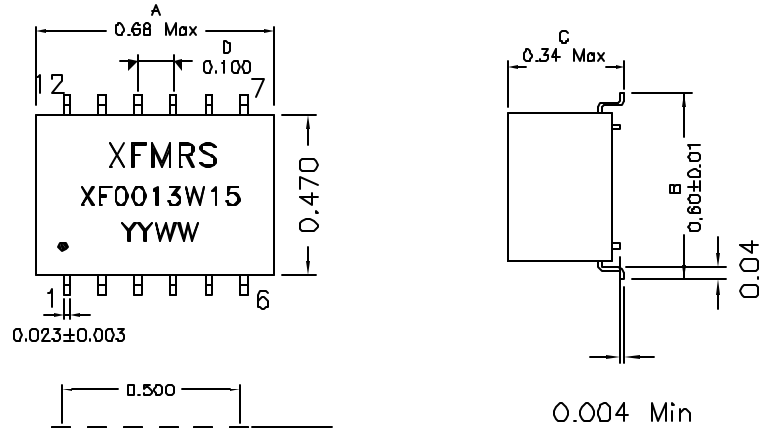
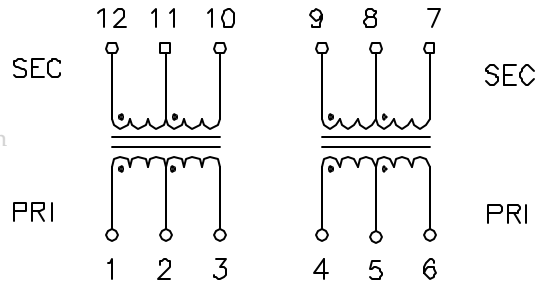


1. Mechanical Dimensions:



SUGGESTED PAD LAYOUT

2. Schematic:



www.DataSheet4U.com

DOC REV: A/4

3. Electrical Specifications: @25°C

PRI OCL: 1.2mH Min @100KHz 50mV

CW/W: 50pF Max @100KHz 50mV, Each coil

PRI LL: 0.80uH Max @100KHz 50mV, Each coil

PRI DCR: 1.00 Ohms Max

DCR: Pins 10-12 1.00 Ohms Max

DCR: Pins 7-9 1.80 Ohms Max

Turns Ratio: Pins (12-11-10):(1-2-3)=1CT:1CT±2%

Pins (4-5-6):(9-8-7)=1CT:2CT±2%

Isolation Voltage: 1500 Vrms (PRI/SEC)

Notes:

1. Solderability: Leads shall meet MIL-STD-202G, Method 208H for solderability.
2. Flammability: UL94V-0
3. ASTM oxygen index: > 28%
4. Insulation System: Class F 155°C. UL file E151556
5. Operating Temperature Range: All listed parameters are to be within tolerance from -40°C to +85°C
6. Storage Temperature Range: -55°C to +125°C
7. Aqueous wash compatible
8. SMD Lead Coplanarity: ±0.004*(0.102mm)
9. Electrical and mechanical specifications 100% tested
10. RoHS Compliant Component

XFMR5 Inc www.XFMR5.com		Title: TRANSFORMER	
UNLESS OTHERWISE SPECIFIED TOLERANCES: .xxx ±0.010 Dimensions in Inch SCALE 2.5:1 SHT 1 OF 1	P/N: XF0013W15		REV. A
	DWN.	Juan Mao	Feb-28-08
	CHK.	YK Liao	Feb-28-08
APP.	BW	www.DataSheet4U.com Feb-28-08	

PROPRIETARY Document is the property of XFMR5 Group & is not allowed to be duplicated without authorization.