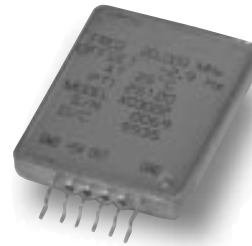


XO3022 Series

1.25 x 1 inch, 5.0 Volt, Sinewave, TCXO

Applications

Avionics
 Portable Communications
 Navigation
 Test Equipment
 VCXO Version Available



Features

Low Power
 High Stability
 Wide Frequency Range
 High Shock

Typical Specifications

Model	Frequency (MHz)	Temperature Range (°C)	Temperature Stability	Aging First Year	Output	Supply Voltage
XO3022	20	-30 to +70	±0.75 ppm	±1.0 ppm max.	Sinewave	5 V ±0.25 V
Options	10 to 100	See Table		Freq. dependent	-3 to +3 dBm into 50 Ω HCMOS	3.3 V to 15 V

Additional Specifications

Aging over ten years: ±3.0 ppm max
 Current Sinewave: As low as 2 mA
 Frequency adjust Method: External 10 K pot
 Range: ±5 ppm

Output Signal Type

Level: 0.5 V pk-pk
 Load: 1 k Ω

Phase Noise @ 20 MHz

10 Hz: -85 dBc/Hz
 100 Hz: -115 dBc/Hz
 1 kHz: -135 dBc/Hz
 10 kHz: -145 dBc/Hz

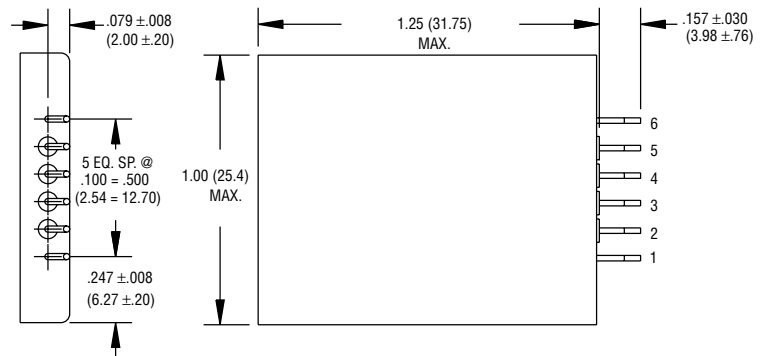
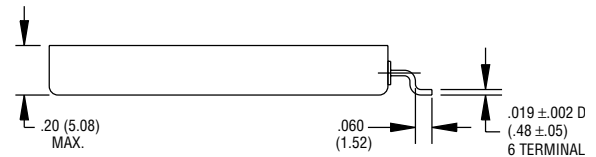
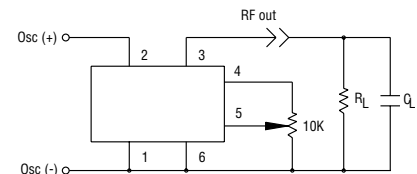
Optional Temperature Ranges and Frequency Stabilities

Range (°C)	±1	±0.75	±0.50	±0.25
+15 to +30	X	X	X	X
0 to +50	X	X	X	X
0 to +70	X	X	X	
-20 to +70	X	X	X	
-40 to +75	X	X		
-55 to +85	X			

This TCXO can be produced to these specifications, with extended temperature range and tighter stability being cost drivers.

Environmental

Vibration 0.4 g²/Hz, 100-2000 Hz
Shock 50 g 11 mS 1/2 sine
Very High Shock Version Available to 50 kg, 8mS 1/2 sine



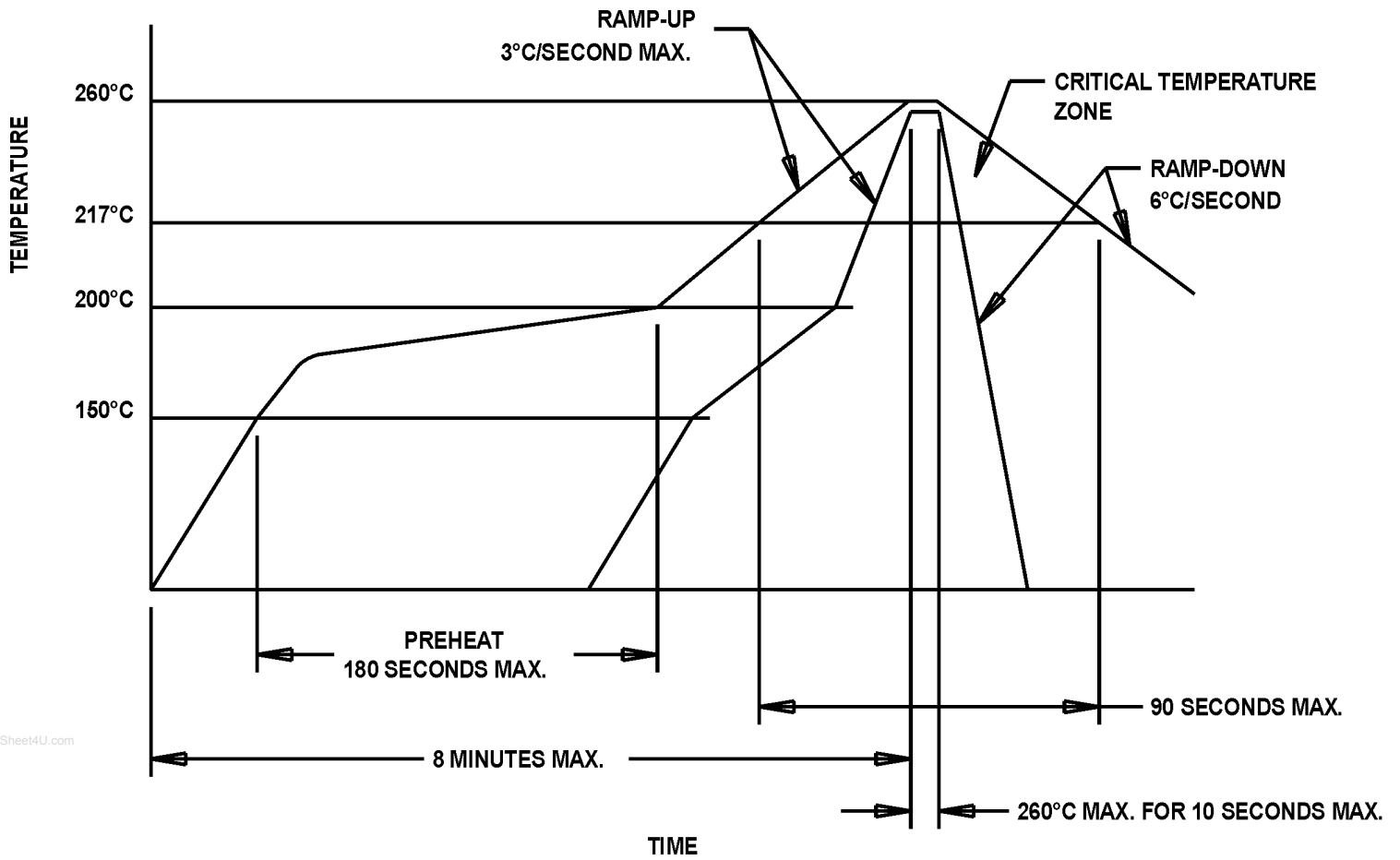
Dimensions are in inches (mm)

PIN CONNECTIONS	
1.	GROUND (TO EXTERNAL 10K POT.)
2.	Supply (+)
3.	RF OUTPUT
4.	Vref
5.	FREQ. ADJ. (WIPER ARM OF EXT. 10K POT.)
6.	CASE GROUND AND SUPPLY RETURN

Pin numbers shown for ref. only.
 Numbers are not marked on unit.

MtronPTI reserves the right to make changes to the product(s) and service(s) described herein without notice. No liability is assumed as a result of their use or application.

MtronPTI Lead Free Solder Profile



MtronPTI reserves the right to make changes to the product(s) and service(s) described herein without notice. No liability is assumed as a result of their use or application.

Please see www.mtronpti.com for our complete offering and detailed datasheets. Contact us for your application specific requirements: MtronPTI 1-800-762-8800
www.DataSheet4U.com