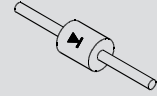
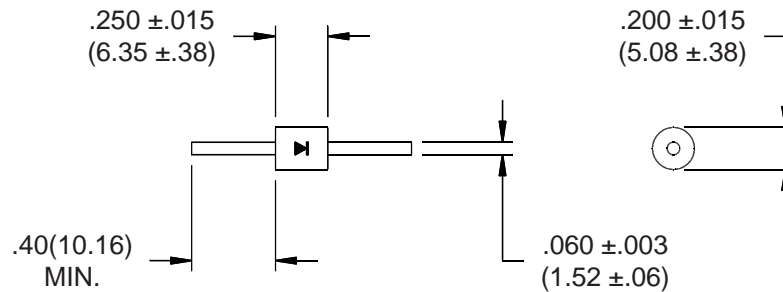


Spice Model**Z100UF****Electrical Characteristics and Maximum Ratings**

Part Number	Working Reverse Voltage (Vrwm)	Average Rectified Current (Io)		Reverse Current @ Vrwm (Ir)		Forward Voltage (Vf)		1 Cycle Surge Current tp=8.3ms (Ifsm)	Repetitive Surge Current (Ifrm)	Reverse Recovery Time (3) (Trr)	Thermal Impedance θ_{J-L}		Junction Cap. @ 50VDC @ 1kHz (Cj)
		55°C(1)	100°C(2)	25°C	100°C	25°C		25°C	25°C	25°C	L=.000	L=.250	25°C
	Volts	Amps	Amps	μ A	μ A	Volts	Amps	Amps	Amps	ns	°C/W	°C/W	pF
Z100UF	10000	0.40	0.20	1.0	25	14.0	0.6	25	5	100	3	10.0	8



Name	Parameter	Value	Units
I_s	Reverse leakage current	5.0E-07	Amps
N	Emission coefficient	35	
T	Temperature	25	C
RS	Diode series resistance	0.25	Ohm
TT	Transit time	100	nS
C_{J0}	Zero-bias junction capacitance	9.75	pF
VJ	Bulk junction potential	7.77	Volts
M	Grading coefficient	0.5	
EG	Energy-band gap	1.11	Volts
XTI	Temperature coefficient	3	
KF	Flicker-noise coefficient	0	
AF	Flicker-noise exponent	1	
FC	Coefficient for capacitance	0.5	
BV	Diode breakdown voltage	12000	Volts
IBV	Diode breakdown current	100	uAmps

Dimensions: In. (mm) * All temperatures are ambient unless otherwise noted. * Data subject to change without notice.



Voltage Multipliers, Inc.
8711 W. Roosevelt Ave.
Visalia, CA 93291

Tel (559) 651-1402
Fax (559) 651-0740
www.voltagemultipliers.com