

Coaxial Frequency Mixer

Level 7 (LO Power +7 dBm) 800 to 1250 MHz

ZAD-12



CASE STYLE: M22

Connectors	Model	Price	Qty.
BNC	ZAD-12	\$61.95 ea.	(1-9)
BRACKET (OPTION "B")			
BRACKET (OPTION "BR")			

Maximum Ratings

Operating Temperature	-55°C to 100°C
Storage Temperature	-55°C to 100°C
RF Power	50mW
IF Current	40mA

Permanent damage may occur if any of these limits are exceeded.

Coaxial Connections

LO	1
RF	3
IF	2

Features

- low conversion loss, 6.21 dB typ.
- wideband, 800 to 1250 MHz
- rugged shielded case

Applications

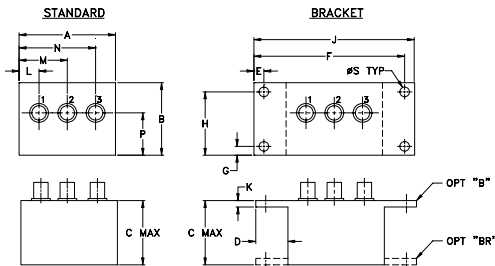
- cellular
- UHF
- instrumentation

Electrical Specifications

FREQUENCY (MHz)		CONVERSION LOSS (dB)			LO-RF ISOLATION (dB)		LO-IF ISOLATION (dB)	
LO/RF	IF	\bar{X}	σ	Max.	Typ.	Min.	Typ.	Min.
$f_c - f_u$								
800-1250	50-90	6.21	0.13	7.5	35	25	30	20

1 dB COMP.: +1 dBm typ.

Outline Drawing



Outline Dimensions (inch/mm)

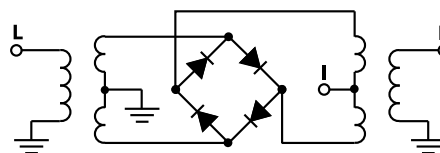
A	B	C	D	E	F	G	H
2.25	1.38	1.24	.50	.150	3.100	.138	1.238
57.15	35.05	31.50	12.70	3.81	78.74	3.51	31.45

J	K	L	M	N	P	S	wt
3.25	.10	.40	1.15	1.86	.64	.150	grams
82.55	2.54	10.16	29.21	47.24	16.26	3.81	74.0

Typical Performance Data

Frequency (MHz)		Conversion Loss (dB)	Isolation L-R (dB)	Isolation L-I (dB)	VSWR RF Port (:1)	VSWR LO Port (:1)
RF	LO	LO +7dBm	LO +7dBm	LO +7dBm	LO +7dBm	LO +7dBm
800.00	730.00	6.67	33.42	34.21	2.64	1.93
835.53	765.53	6.56	32.78	33.92	2.58	1.88
871.05	801.05	6.57	32.33	33.41	2.53	1.87
894.72	824.74	6.41	32.16	33.06	2.46	1.84
918.42	848.42	6.31	32.06	32.78	2.43	1.82
942.10	872.10	6.33	32.10	32.59	2.29	1.81
965.79	895.79	6.29	32.20	32.33	2.20	1.79
989.47	919.47	6.18	32.44	32.15	2.13	1.77
1013.20	943.20	6.19	32.61	31.91	2.07	1.77
1036.80	966.80	6.24	33.00	31.84	2.04	1.77
1060.50	990.50	6.23	33.47	31.84	1.94	1.74
1072.40	1002.40	6.34	33.61	31.77	1.89	1.74
1096.10	1026.10	6.39	33.93	31.75	1.84	1.73
1119.70	1049.70	6.52	34.25	31.80	1.78	1.69
1143.40	1073.40	6.67	34.50	31.82	1.76	1.69
1167.10	1097.10	6.77	34.75	31.82	1.73	1.65
1190.80	1120.80	6.90	35.42	32.00	1.71	1.62
1214.50	1144.50	6.95	36.69	32.00	1.73	1.59
1238.20	1168.20	7.04	38.41	33.59	1.73	1.57
1250.00	1180.00	7.00	39.24	34.65	1.75	1.51

Electrical Schematic



Mini-Circuits
ISO 9001 ISO 14001 AS 9100 CERTIFIED

P.O. Box 350166, Brooklyn, New York 11235-0003 (718) 934-4500 Fax (718) 332-4661 The Design Engineers Search Engine www.minicircuits.com Provides ACTUAL Data Instantly at minicircuits.com

For detailed performance specs & shopping online see web site

Notes: 1. Performance and quality attributes and conditions not expressly stated in this specification sheet are intended to be excluded and do not form a part of this specification sheet. 2. Electrical specifications and performance data contained herein are based on Mini-Circuit's applicable established test performance criteria and measurement instructions. 3. The parts covered by this specification sheet are subject to Mini-Circuit's standard limited warranty and terms and conditions (collectively, "Standard Terms"); Purchasers of this part are entitled to the rights and benefits contained therein. For a full statement of the Standard Terms and the exclusive rights and remedies thereunder, please visit Mini-Circuit's website at www.minicircuits.com/MCLStore/terms.jsp.

REV. OR
M98898
ZAD-12
DJ/TD/CP/AM
091006
Page 1 of 2

