

Coaxial Frequency Mixer

Level 7 (LO Power +7 dBm) 0.003 to 100 MHz

ZAD-6+



Maximum Ratings

Operating Temperature	-55°C to 100°C
Storage Temperature	-55°C to 100°C
RF Power	50mW
IF Current	40mA

Coaxial Connections

LO	1
RF	3
IF	2

Features

- low conversion loss, 4.65 dB typ.
- good L-R isolation, 45 dB typ., L-I isolation, 40 dB typ.
- rugged shielded case

Applications

- VHF
- AM radio
- instrumentation

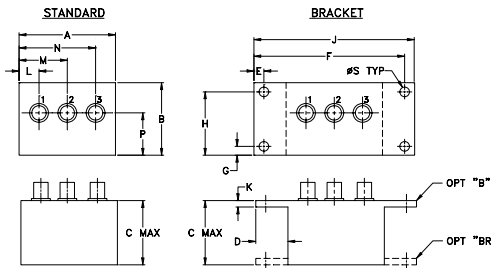
CASE STYLE: M22

Connectors	Model	Price	Qty.
BNC	ZAD-6+	\$51.95 ea.	(1-9)
BRACKET (OPTION "B")		\$5.00	(1+)
BRACKET (OPTION "BR")		\$1.50	(1+)

+ RoHS compliant in accordance with EU Directive (2002/95/EC)

The +Suffix has been added in order to identify RoHS Compliance. See our web site for RoHS Compliance methodologies and qualifications.

Outline Drawing



Outline Dimensions (inch/mm)

A	B	C	D	E	F	G	H
2.25	1.38	1.24	.50	.150	3.100	.138	1.238
57.15	35.05	31.50	12.70	3.81	78.74	3.51	31.45

J	K	L	M	N	P	S	wt
3.25	.10	.40	1.15	1.86	.64	.150	grams
82.55	2.54	10.16	29.21	47.24	16.26	3.81	74.0

Electrical Specifications

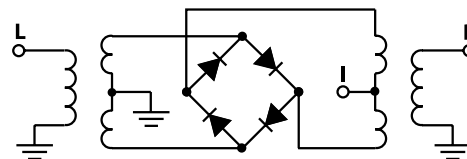
FREQUENCY (MHz)	CONVERSION LOSS (dB)	LO-RF ISOLATION (dB)						LO-IF ISOLATION (dB)									
		L		M		U		L		M		U					
0.003-100	DC-100	4.65	0.08	7.5	8.5	60	50	45	30	35	25	60	45	40	25	30	20

1 dB COMP.: +1 dBm typ. L = low range [f_L to $10 f_L$] M = mid range [$10 f_L$ to $f_U/2$] U = upper range [$f_U/2$ to f_U]
 \bar{X} = Mid-Band m σ = Total Range Max. m = mid band [$2f_L$ to $f_U/2$]

Typical Performance Data

Frequency (MHz)	Conversion Loss (dB)	VSWR RF Port (:1)	Frequency (MHz)	Isolation L-R (dB)	Isolation L-I (dB)	VSWR LO Port (:1)
0.25	30.25	4.69	0.25	87.94	69.25	2.72
0.50	30.50	4.70	2.20	88.51	67.15	2.60
1.00	31.00	4.72	5.13	80.05	62.74	2.56
2.00	32.00	4.71	10.00	74.49	58.28	2.48
4.00	34.00	4.72	30.00	65.04	46.76	2.43
6.00	36.00	4.75	35.00	61.86	45.54	2.42
8.00	38.00	4.77	40.00	58.66	43.62	2.43
10.00	40.00	4.77	45.00	62.82	41.15	2.44
15.00	45.00	4.75	49.00	62.74	40.69	2.45
19.00	49.00	4.72	53.00	59.34	40.12	2.47
23.00	53.00	4.69	57.00	55.11	40.91	2.50
31.00	61.00	5.04	61.00	51.93	41.11	2.55
39.00	69.00	5.21	65.00	50.11	39.64	2.58
51.00	81.00	5.29	69.00	48.56	38.35	2.62
61.00	91.00	5.51	73.00	47.39	36.57	2.65
67.00	97.00	5.71	81.00	45.06	33.06	2.70
70.00	100.00	5.80	85.00	44.27	31.87	2.74
85.00	115.00	5.84	92.50	43.42	30.32	2.89
92.50	122.50	5.90	96.25	43.22	30.02	2.98
100.00	130.00	5.93	100.00	42.87	30.05	3.06

Electrical Schematic



Mini-Circuits
ISO 9001 ISO 14001 CERTIFIED

ALL NEW
minicircuits.com

P.O. Box 350166, Brooklyn, New York 11235-0003 (718) 934-4500 Fax (718) 332-4661 For detailed performance specs & shopping online see Mini-Circuits web site



The Design Engineers Search Engine Provides ACTUAL Data Instantly From MINI-CIRCUITS At: www.minicircuits.com

RF/IF MICROWAVE COMPONENTS

REV. B
M108294
ZAD-6+
DJ/TD/CP
070611
Page 1 of 2

