

Coaxial Amplifier

ZFL-1000H+ ZFL-1000H

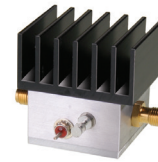
50Ω Medium Power 10 to 1000 MHz

Features

- wideband, 10 to 1000 MHz
- low noise, 5 dB typ.
- high IP3, +33 dBm typ.
- protected by US Patent, 6,943,629

Applications

- cellular
- VHF/UHF
- test equipment



CASE STYLE: SS98

Connectors	Model	Price	Qty.
SMA	ZFL-1000H(+)	\$219.00 ea.	(1-9)
BRACKET (OPTION "B")		\$2.50	(1+)

To order without heat sink see data sheet for [ZFL-1000HX\(+\)](#)

+RoHS Compliant

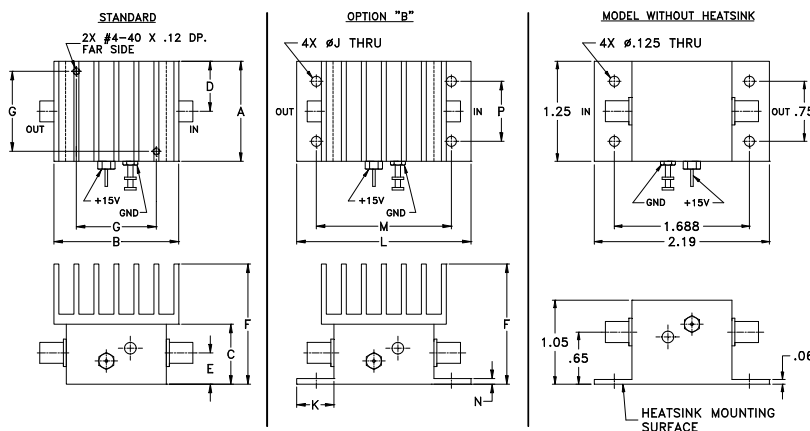
The +Suffix identifies RoHS Compliance. See our web site for RoHS Compliance methodologies and qualifications

Electrical Specifications

Parameter	Min.	Typ.	Max.	Units
Frequency Range	10	—	1000	MHz
Gain	28	—	—	dB
Gain Flatness	—	—	±1.0	dB
Output Power at 1dB compression	+20	—	—	dBm
Noise Figure	—	5.0	—	dB
Output third order intercept point	—	+33	—	dBm
Input VSWR	—	2.0	—	:1
Output VSWR	—	2.0	—	:1
DC Supply Voltage	—	15	—	V
Supply Current	—	—	160	mA

Open load is not recommended, potentially can cause damage.
With no load derate max input power by 20 dB

Outline Drawing



Maximum Ratings

Parameter	Ratings
Operating Temperature	-20°C to 71°C
Storage Temperature	-55°C to 100°C
DC Voltage	+17V
Input RF Power (no damage)	+5 dBm

Permanent damage may occur if any of these limits are exceeded.

Outline Dimensions (inch/mm)

A	B	C	D	E	F	G	H	J	K	L	M	N	P	wt
1.25	1.56	.75	.63	.39	1.50	1.000	--	.125	.46	2.19	1.688	.06	.750	gram
31.75	39.62	19.05	16.00	9.91	38.10	25.40	--	3.18	11.68	55.63	42.88	1.52	19.05	85.1

*70 grams without heat sin

Notes

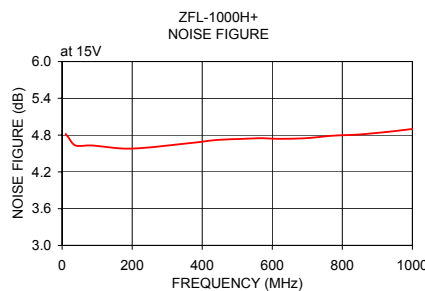
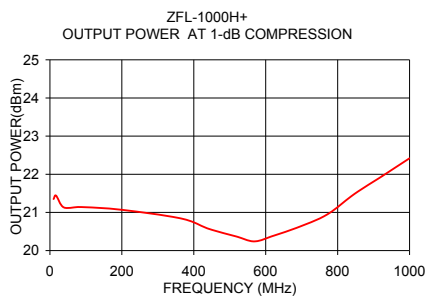
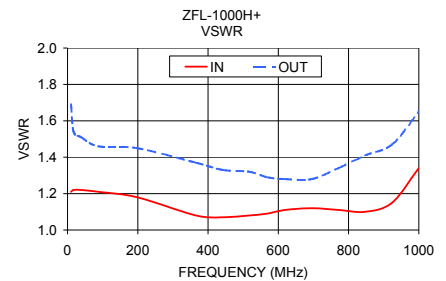
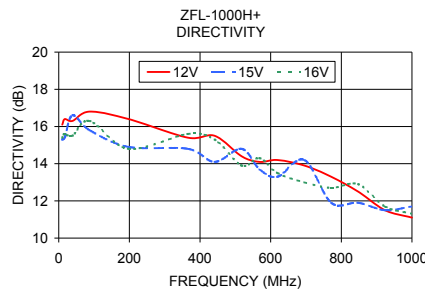
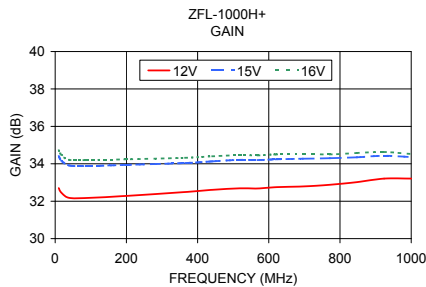
- Performance and quality attributes and conditions not expressly stated in this specification document are intended to be excluded and do not form a part of this specification document.
- Electrical specifications and performance data contained in this specification document are based on Mini-Circuit's applicable established test performance criteria and measurement instructions.
- The parts covered by this specification document are subject to Mini-Circuits standard limited warranty and terms and conditions (collectively, "Standard Terms"); Purchasers of this part are entitled to the rights and benefits contained therein. For a full statement of the Standard Terms and the exclusive rights and remedies thereunder, please visit Mini-Circuits' website at www.minicircuits.com/MCLStore/terms.jsp



Typical Performance Data/Curves

ZFL-1000H+ ZFL-1000H

FREQUENCY (MHz)	GAIN (dB)			DIRECTIVITY (dB)			VSWR (:1)		NOISE FIGURE (dB)	POUT at 1 dB COMPR. (dBm)
	12V	15V	16V	12V	15V	16V	IN	OUT		
10.00	32.70	34.40	34.71	16.10	15.30	15.40	1.21	1.69	4.82	21.35
17.20	32.46	34.18	34.49	16.40	15.40	15.60	1.22	1.54	4.77	21.44
38.80	32.18	33.91	34.21	16.30	16.60	15.50	1.22	1.51	4.63	21.13
87.60	32.17	33.88	34.20	16.80	15.80	16.30	1.21	1.46	4.63	21.14
197.60	32.28	33.94	34.24	16.40	14.90	14.80	1.18	1.45	4.58	21.07
365.40	32.49	34.04	34.32	15.40	14.80	15.60	1.08	1.37	4.67	20.84
441.50	32.61	34.13	34.40	15.50	14.10	15.30	1.07	1.33	4.72	20.57
517.70	32.69	34.21	34.46	14.40	14.80	13.90	1.08	1.32	4.74	20.37
568.50	32.68	34.20	34.45	14.10	13.70	14.30	1.09	1.29	4.75	20.24
619.20	32.75	34.24	34.50	14.20	13.30	13.50	1.11	1.28	4.74	20.38
695.40	32.79	34.27	34.52	13.90	14.20	13.00	1.12	1.28	4.75	20.63
771.50	32.88	34.30	34.50	13.30	11.90	12.70	1.11	1.34	4.79	20.95
847.70	33.02	34.35	34.58	12.50	11.90	12.90	1.10	1.41	4.81	21.49
923.80	33.21	34.43	34.63	11.50	11.50	11.70	1.15	1.47	4.85	21.95
1000.00	33.21	34.36	34.52	11.10	11.70	11.30	1.34	1.65	4.90	22.42



Notes

- A. Performance and quality attributes and conditions not expressly stated in this specification document are intended to be excluded and do not form a part of this specification document.
- B. Electrical specifications and performance data contained in this specification document are based on Mini-Circuit's applicable established test performance criteria and measurement instructions.
- C. The parts covered by this specification document are subject to Mini-Circuits standard limited warranty and terms and conditions (collectively, "Standard Terms"); Purchasers of this part are entitled to the rights and benefits contained therein. For a full statement of the Standard Terms and the exclusive rights and remedies thereunder, please visit Mini-Circuits' website at www.minicircuits.com/MCLStore/terms.jsp

