

Coaxial

Power Splitter/Combiner

ZFSC-2-372+

2 Way-0° 50Ω 10 to 3700 MHz

Maximum Ratings

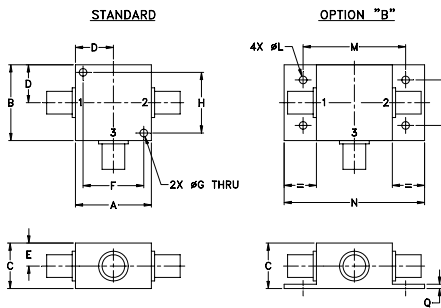
Operating Temperature	-40°C to 85°C
Storage Temperature	-55°C to 100°C
Power Input (as a splitter)	1W max.
Internal Dissipation	0.125W max.

Permanent damage may occur if any of these limits are exceeded.

Coaxial Connections

SUM PORT	3
PORT 1	1
PORT 2	2

Outline Drawing



Outline Dimensions (inch/mm)

A	B	C	D	E	F	G	H		
1.25	1.25	.75	.63	.38	1.00	.125	1.000		
31.75	31.75	19.05	16.00	9.65	25.40	3.18	25.40		
J	K	L	M	N	P	Q	wt		
--	--	.125	1.688	2.18	.75	.07	grams		
--	--	3.18	42.88	55.37	19.05	1.78	70.0		

Features

- very wideband, 10 to 3700 MHz
- low insertion loss, 0.6 dB typ.
- excellent amplitude unbalance, 0.2 dB typ.
- excellent phase unbalance, 1.0 deg. typ.
- rugged shielded case

Applications

- cellular
- GPS
- PCS/DCS
- ISM
- satellite distribution
- MMDS
- defense communications



CASE STYLE: K18

Connectors	Model	Price	Qty.
SMA	ZFSC-2-372-S+	\$84.95	(1-9)
BRACKET (OPTION "B")		\$5.00	(1+)

+ RoHS compliant in accordance with EU Directive (2002/95/EC)

The +Suffix has been added in order to identify RoHS Compliance. See our web site for RoHS Compliance methodologies and qualifications.

Electrical Specifications

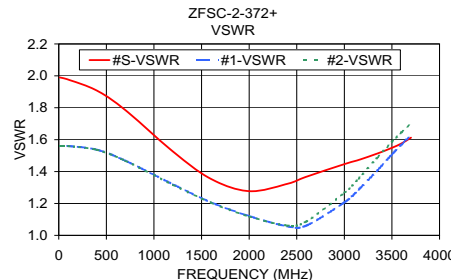
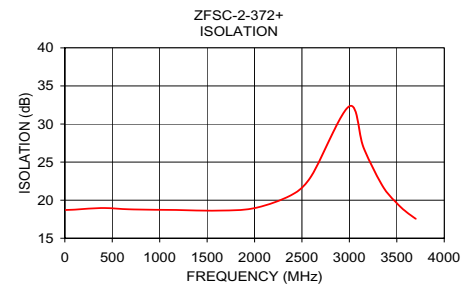
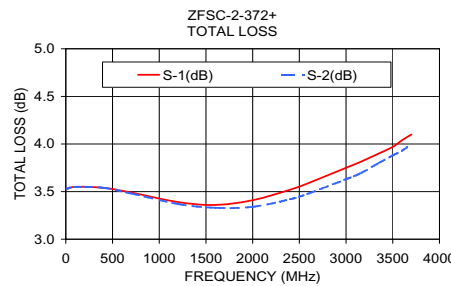
FREQ. RANGE (MHz)	ISOLATION (dB)			INSERTION LOSS (dB) ABOVE 3.0 dB			PHASE UNBALANCE (Degrees)			AMPLITUDE UNBALANCE (dB)								
	L	M	U	L	M	U	L	M	U	L	M	U						
f_L - f_U	Typ. Min.	Typ. Min.	Typ. Min.	Typ. Max.	Typ. Max.	Typ. Max.	Max.	Max.	Max.	Max.	Max.	Max.						
10-3700	18	13	18	14	20	14	0.5	0.8	0.6	1.1	0.8	1.6	1	4	6	0.2	0.3	0.4
2400-3300			25	17				0.6	1.3					5			0.3	

L = low range [f_L to $10 f_L$] M = mid range [$10 f_L$ to $f_U/2$] U = upper range [$f_U/2$ to f_U]

Typical Performance Data

Frequency (MHz)	Total Loss ¹ (dB)		Amplitude Unbalance (dB)	Isolation (dB)	Phase Unbalance (deg.)	VSWR S	VSWR 1	VSWR 2
	S-1	S-2						
10.00	3.53	3.53	0.00	18.72	0.00	1.99	1.56	1.56
100.00	3.55	3.55	0.00	18.75	0.01	1.98	1.56	1.56
400.00	3.54	3.54	0.01	18.97	0.00	1.91	1.54	1.54
700.00	3.49	3.48	0.01	18.79	0.00	1.78	1.47	1.47
1200.00	3.39	3.37	0.02	18.71	0.02	1.53	1.32	1.32
1600.00	3.36	3.33	0.03	18.63	0.02	1.35	1.21	1.21
2000.00	3.41	3.34	0.06	18.96	0.01	1.28	1.12	1.12
2400.00	3.52	3.42	0.10	20.75	0.10	1.32	1.06	1.06
2600.00	3.59	3.48	0.11	23.20	0.22	1.37	1.06	1.09
3000.00	3.75	3.63	0.12	32.34	0.61	1.45	1.21	1.27
3150.00	3.81	3.69	0.12	26.87	0.72	1.47	1.29	1.36
3350.00	3.90	3.80	0.10	21.86	0.84	1.51	1.41	1.49
3500.00	3.97	3.88	0.10	19.61	0.82	1.55	1.51	1.59
3600.00	4.04	3.93	0.11	18.46	0.71	1.58	1.57	1.65
3700.00	4.10	4.00	0.11	17.55	0.54	1.61	1.63	1.70

1. Total Loss = Insertion Loss + 3dB splitter loss.



electrical schematic



For detailed performance specs & shopping online see web site



P.O. Box 350166, Brooklyn, New York 11235-0003 (718) 934-4500 Fax (718) 332-4661 The Design Engineers Search Engine Provides ACTUAL Data Instantly at minicircuits.com

Notes: 1. Performance and quality attributes and conditions not expressly stated in this specification sheet are intended to be excluded and do not form a part of this specification sheet. 2. Electrical specifications and performance data contained herein are based on Mini-Circuit's applicable established test performance criteria and measurement instructions. 3. The parts covered by this specification sheet are subject to Mini-Circuits standard limited warranty and terms and conditions (collectively, "Standard Terms"); Purchasers of this part are entitled to the rights and benefits contained therein. For a full statement of the Standard Terms and the exclusive rights and remedies thereunder, please visit Mini-Circuits' website at www.minicircuits.com/MCLStore/terms.jsp.

REV. A
M127604
ZFSC-2-372+
ED-2876
HY/WZ/CP
120221