

Coaxial

Power Splitter/Combiner

ZN2PD2-63+

2 Way-0° 50Ω 350 to 6000 MHz



CASE STYLE: VVV845

Connectors	Model	Price	Qty.
SMA	ZN2PD2-63-S+	\$79.95 ea.	(1-9)

+ RoHS compliant in accordance with EU Directive (2002/95/EC)

The +Suffix has been added in order to identify RoHS Compliance. See our web site for RoHS Compliance methodologies and qualifications.

Maximum Ratings

Operating Temperature	-55°C to 100°C
Storage Temperature	-55°C to 100°C
Power Input (as a splitter)	10W max.
Internal Dissipation	1W max.

Coaxial Connections

SUM PORT	S
PORT 1	1
PORT 2	2

Features

- wideband, 350 to 6000 MHz
- excellent amplitude unbalance, 0.1 dB typ
- excellent phase unbalance, 2 deg. typ.
- up to 10W power input as splitter

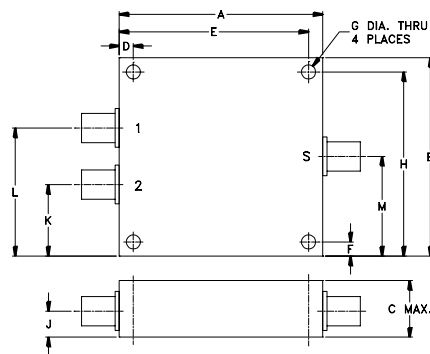
Applications

- UHF TV
- cellular/ISM/SMG/GSM
- satellite distribution
- GPS/L BAND (MARSAT)
- PCS/DCS/UMTS
- MMDU
- SATCOM

Electrical Specifications

FREQ. RANGE (MHz)	ISOLATION (dB)		INSERTION LOSS (dB) ABOVE 3.0 dB		PHASE UNBALANCE (Degrees)	AMPLITUDE UNBALANCE (dB)	VSWR (:1)			
	Typ.	Min.	Typ.	Max.			S		OUT	
f_L - f_U					Max.	Max.	Typ.	Max.	Typ.	Max.
350-6000	25	15	0.6	1.6	4	0.5	1.3	—	1.2	—
600-1600	22	17	0.3	0.7	2	0.3	1.3	—	1.2	—
1600-2700	22	18	0.4	0.9	3	0.3	1.4	—	1.3	—
2700-3600	20	15	0.7	1.1	4	0.4	1.4	—	1.4	—
3700-5800	18	15	0.8	1.4	4	0.5	1.3	—	1.2	—

Outline Drawing

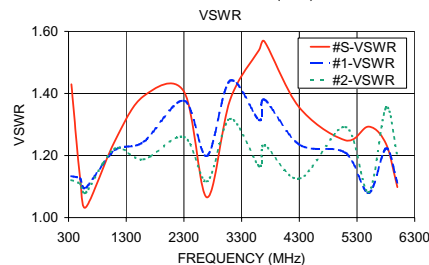
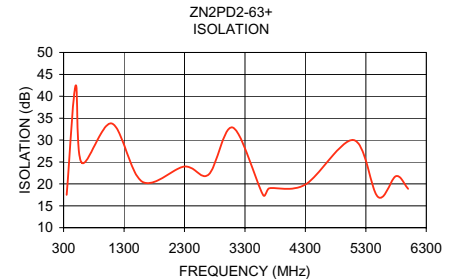
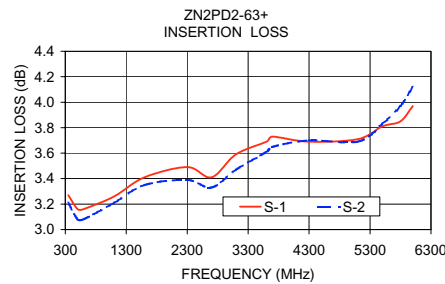


Outline Dimensions (inch/mm)

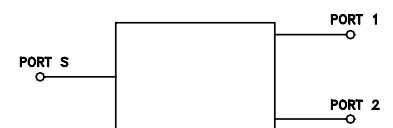
A	B	C	D	E	F	G
4.50	2.50	.67	.400	4.100	.125	.125
114.30	63.50	17.02	10.16	104.14	3.18	3.18
H	J	K	L	M	wt	
2.375	.33	.75	1.75	1.25	grams	
60.33	8.38	19.05	44.45	31.75	247	

Typical Performance Data

Frequency (MHz)	Insertion Loss (dB)		Amplitude Unbalance (dB)	Isolation (dB)	Phase Unbalance (deg.)	VSWR S	VSWR 1	VSWR 2
	S-1	S-2						
350.00	3.27	3.21	0.06	17.49	0.29	1.43	1.13	1.12
500.00	3.16	3.08	0.08	42.43	0.26	1.13	1.13	1.11
600.00	3.16	3.08	0.09	24.83	0.33	1.03	1.10	1.08
1100.00	3.26	3.21	0.05	33.79	0.45	1.25	1.22	1.22
1600.00	3.41	3.35	0.06	20.51	0.81	1.39	1.24	1.19
2300.00	3.49	3.39	0.10	23.95	0.93	1.41	1.38	1.26
2700.00	3.41	3.33	0.09	22.13	1.20	1.07	1.20	1.12
3100.00	3.59	3.47	0.12	32.86	2.09	1.38	1.44	1.32
3600.00	3.69	3.61	0.08	17.45	2.22	1.54	1.31	1.17
3700.00	3.73	3.65	0.08	18.98	2.16	1.57	1.38	1.23
4300.00	3.69	3.70	0.01	19.85	2.22	1.35	1.24	1.13
5100.00	3.71	3.69	0.02	29.99	2.50	1.25	1.21	1.29
5500.00	3.81	3.83	0.02	17.04	2.70	1.29	1.08	1.08
5800.00	3.85	3.97	0.12	21.77	2.53	1.24	1.22	1.35
6000.00	3.97	4.12	0.15	18.87	2.23	1.10	1.11	1.20



electrical schematic



Mini-Circuits®
ISO 9001 ISO 14001 CERTIFIED

ALL NEW
minicircuits.com

P.O. Box 350166, Brooklyn, New York 11235-0003 (718) 934-4500 Fax (718) 332-4661 For detailed performance specs & shopping online see Mini-Circuits web site



The Design Engineers Search Engine Provides ACTUAL Data Instantly From MINI-CIRCUITS At: www.minicircuits.com

RF/IF MICROWAVE COMPONENTS

REV. OR
M112749
ZN2PD2-63+
ED-12592/1
HY/TD/AM
080610