



ZSP4491
Two Panel Electroluminescent Lamp Driver
Datasheet

Revision 2.00
June 10th, 2015





ASIX

ZSP4491 Two Panel Electroluminescent Lamp Driver

IMPORTANT NOTICE

Copyright © 2005-2015 ASIX Electronics Corporation. All rights reserved.

DISCLAIMER

No part of this document may be reproduced or transmitted in any form or by any means, electronic or mechanical, including photocopying and recording, for any purpose, without the express written permission of ASIX. ASIX may make changes to the product specifications and descriptions in this document at any time, without notice.

ASIX provides this document “as is” without warranty of any kind, either expressed or implied, including without limitation warranties of merchantability, fitness for a particular purpose, and non-infringement.

Designers must not rely on the absence or characteristics of any features or registers marked “reserved”, “undefined” or “NC”. ASIX reserves these for future definition and shall have no responsibility whatsoever for conflicts or incompatibilities arising from future changes to them. Always contact ASIX to get the latest document before starting a design of ASIX products.

TRADEMARKS

ASIX, the ASIX logo are registered trademarks of ASIX Electronics Corporation. All other trademarks are the property of their respective owners.



Features

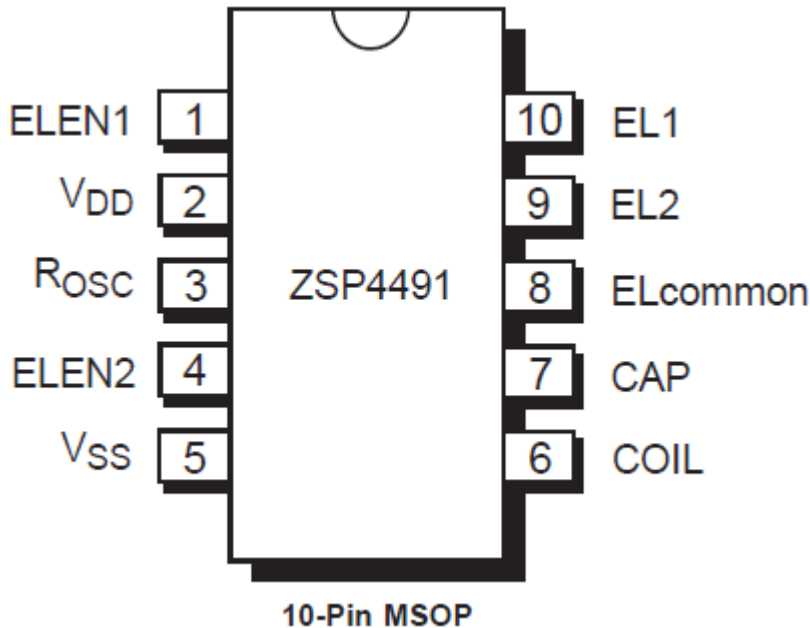
- Single IC drives 2 EL lamps for backlighting:
 - Cell phone keypad and LCD
 - Multi-color EL lamps
 - Multi-segment EL lamps
- Control over lamp-A and lamp-B for independent or concurrent operation
- +2.2V to +5.0V battery operation
- Single coil used to generate high voltage AC outputs
- Low power standby mode draws 100nA typical current
- A single resistor controls the internal oscillator
- DC-AC inverter produces typical 180V_{PP}
- Space-saving 10-pin MSOP package

Applications

- Cellular phones
- PDA's
- EL keypads & dashboards
- Handheld GPS units
- Security systems
- POS terminals

General Description

The ZSP4491 electroluminescent lamp driver provides designers of cell phones PDA's and other handheld, portable electronic devices with an integrated solution for driving two EL lamps independently or concurrently. The ZSP4491 is designed with our proprietary high voltage BiCMOS technology. The ZSP4491 reduces system cost, component count and board space requirements over a discrete 2-EL driver approach. The EL lamps operate in opposite phase so the ZSP4491 can be easily implemented in applications driving multi-color or multi-segment EL lamps. The ZSP4491 operates from a +2.2V to +5.0V battery source. The device features a low power standby mode which draws less than 1mA. The frequency of the internal oscillator is set using a single external resistor. A single external inductor is required to generate the high voltage AC outputs to drive the EL lamps. All input pins are ESD protected with internal diodes to VDD and VSS.





Absolute Maximum Ratings

These are stress ratings only and functional operation of the device at these ratings or any other above those indicated in the operation sections of the specifications is not implied.

Exposure to absolute maximum rating conditions for extended periods of time may affect reliability.

Supply Voltage, VDD	+7.0V
Input Voltages, Logic	-3.0V to (VDD +0.3V)
Lamp Output.....	230V _{pp}
Operating Temperature.....	-40°C to +85°C
Storage Temperature.....	-65°C to +150°C

Power Dissipation Per Package

10-pin MSOP (derate 8.84mW/°C above +70°C)720mW

Storage Considerations

Storage in a low humidity environment is preferred. Large high density plastic packages are moisture sensitive and should be stored in Dry Vapor Barrier Bags. Prior to usage, the parts should remain bagged and stored below 40°C and 60%RH. If the parts are removed from the bag, they should be used within 168 hours or stored in an environment at or below 20%RH. If the above conditions cannot be followed, the parts should be baked for 12 hours at 125°C in order to remove moisture prior to soldering. ASIX ships product in Dry Vapor Barrier Bags with a humidity indicator card and desiccant pack. The humidity indicator should be below 30%RH. The MSL of this product is 3.

The information furnished by ASIX has been carefully reviewed for accuracy and reliability. Its application or use, however, is solely the responsibility of the user. No responsibility of the use of this information become part of the terms and conditions of any subsequent sales agreement with ASIX. Specifications are subject to change without the responsibility for any infringement of patents or other rights of third parties which may result from its use. No license or proprietary rights are granted by implication or otherwise under any patent or patent rights of ASIX Electronics Corporation.

1 Electrical Characteristics

$T_A = +25^\circ\text{C}$, $V_{DD} = +3.0\text{V}$, $L_{COIL} = 2.2\text{mH}$, $R_{OSC} = 560\text{K}\Omega$, EL Lamp Load = 4.7nF ; $C_{INT} = 1000\text{pF}$, unless otherwise noted.

Symbol	Parameter	Condition	Min	Typ	Max	Units
V_{DD}	Supply Voltage		2.2	3.0	5.0	V
I_{DD}	Supply Current			10	55	mA
V_{COIL}	Coil Voltage		V_{DD}		5.0	V
V_{ELEN1} , V_{ELEN2}	ELEN1/ELEN2 LOW Threshold		-0.25	0	0.25	V
	ELEN1/ELEN2 HIGH Threshold	$V_{DD} = +2.8\text{V to } +5.0\text{V}$	$V_{DD} \times 0.61$	V_{DD}	$V_{DD} + 0.25$	V
		$V_{DD} = +2.2\text{V to } +2.8\text{V}$	1.7	V_{DD}	$V_{DD} + 0.25$	V
$I_{SD} = I_{COIL} + I_{DD}$	Shutdown Current	$V_{ELEN} = 0\text{V}$		0.1	1	μA
INDUCTOR DRIVE						
f_{COIL}	Coil Frequency	$T_A = +25^\circ\text{C}$		44.0		KHz
	Coil Duty Cycle			90		%
I_{COIL}	Coil Current			9	45	mA
$I_{PK-COIL}$	Peak Coil Current	Guaranteed by design		20	90	mA
EL LAMP OUTPUT						
f_{LAMP}	EL Lamp Frequency	$T_A = +25^\circ\text{C}$, $V_{DD} = +3.0\text{V}$	250	350		Hz
V_{PP}	Peak-to-Peak Output Voltage	$T_A = +25^\circ\text{C}$, $V_{DD} = +3.0\text{V}$	140	180		V

2 Block Diagram

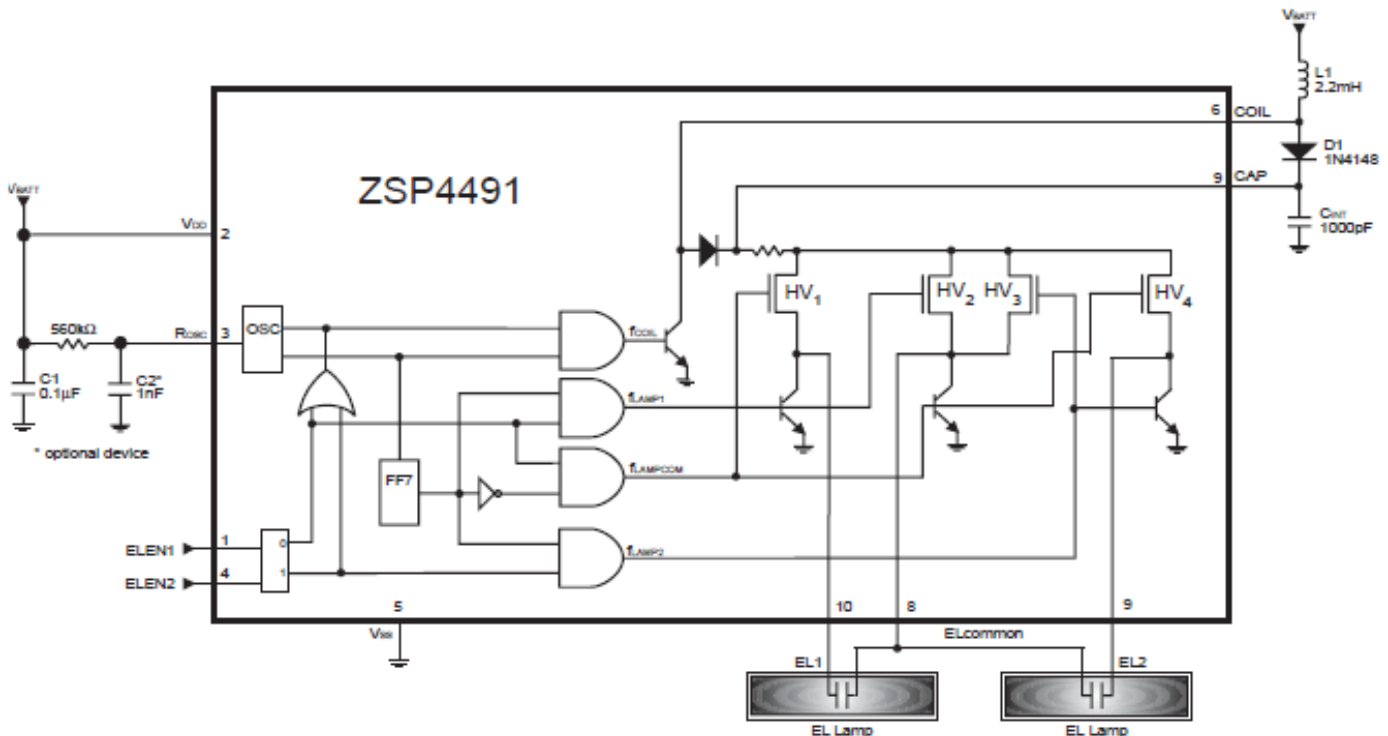


Figure 1. ZSP4491 Block Diagram

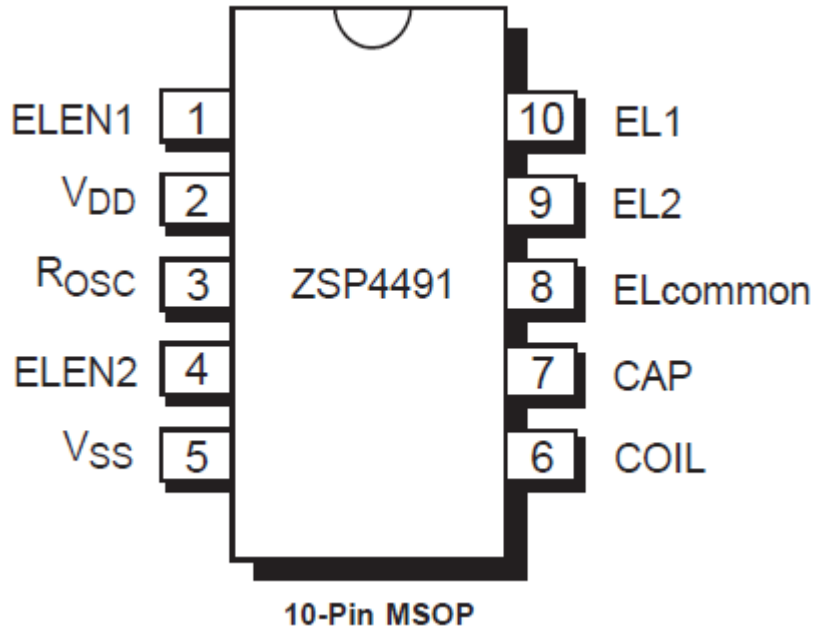
3 Pin Description

Pin Number	Pin Name	Pin Description
1	ELEN1	Electroluminescent Lamp Enable Control Line 1. This is a control line to enable a single or dual EL lamp output. Refer to <i>Table 1</i> for the control logic.
2	V _{DD}	Positive Battery Power Supply.
3	R _{OSC}	Oscillator Resistor. Connecting a resistor between this input pin and V _{DD} sets the frequency of the internal clock.
4	ELEN2	Electroluminescent Lamp Enable Control Line 2. This is a control line to enable a single or dual EL lamp output. Refer to <i>Table 1</i> for the control logic.
5	V _{SS}	Power Supply Common. Connect to the lowest circuit potential, typically ground.
6	COIL	Coil. The inductor for the boost converter is connected from V _{BATT} to this input pin.
7	CAP	Integrator Capacitor. An integrating capacitor connected from this pin to ground filters out any coil switching spikes or ripple present in the output waveform to the EL lamps. Connecting a fast recovery diode from COIL to CAP increases the light output of the EL lamp.
8	ELcommon	Electroluminescent Common. This is a high voltage lamp driver output pin common to both EL lamps.
9	EL2	Electroluminescent Lamp Output 2. This is a high voltage lamp driver output pin connect to the second EL lamp.
10	EL1	Electroluminescent Lamp Output 1. This is a high voltage lamp driver output pin to connect to the first EL lamp.

ELEN1	ELEN2	EL1 Output	EL2 Output
0	0	OFF	OFF
0	1	OFF	ON
1	0	ON	OFF
1	1	ON	ON

Table 1. Control Line Logic Table

4 Pin Configuration



5 Circuit Description

The ZSP4491 electroluminescent lamp driver provides designers of cell phones, PDA's and other handheld, portable electronic devices with an integrated solution for driving two EL lamps independently or simultaneously. The ZSP4491 reduces system cost, component count and board space requirements over a discrete 2 EL driver approach. The EL lamps operate in opposite phase so the ZSP4491 can be easily implemented in applications driving multi-color or multi-segment EL lamps. The ZSP4491 operates from a +2.2V to +5.0V battery source. The device features a low power standby mode that draws less than 1 μ A. The frequency of the internal oscillator is set using a single external resistor. A single external inductor is required to generate the high voltage AC outputs to drive the EL lamps. All input pins are ESD protected with internal diodes to VDD and VSS.

The ZSP4491 contains a DC-AC inverter that can produce an AC output of 180VPP (typical) from a +3.0V input voltage. An internal block diagram of the ZSP4491 can be found in *Figure 1*.

Electroluminescent Technology

An EL lamp consists of a thin layer of phosphorous material sandwiched between two strips of plastic which emits light (fluoresces) when a high voltage AC signal is applied across it. It behaves primarily as a capacitive load. Long periods of DC voltage applied to the material tend to reduce its lifetime. With these conditions in mind, the ideal signal to drive an EL lamp is a high voltage sine wave. Traditional approaches to achieve this type of waveform include discrete circuits incorporating a transformer, transistors and several resistors and capacitors.

This approach is large and bulky and cannot be implemented in most handheld equipment. ASIX offers low power single chip driver circuits specifically designed to drive small to medium sized electroluminescent panels. ASIX EL drivers provide a differential AC voltage without a DC offset to maximize EL lamp lifetime. The only additional components required for the EL driver circuitry are an inductor, resistor and capacitor.

Electroluminescent backlighting is ideal when used with LCD displays, keypads or other back-lit readouts. EL lamps uniformly light an area without creating any undesirable "hot spots" in the display. Also, an EL lamp typically consumes less power than LED's or incandescent bulbs in similar lighting situations. These features make EL ideal for attractive, battery powered products.



Theory Of Operation

Coil Switch

The ZSP4491 has an inductor-based boost converter to generate the high voltage used to drive the EL lamp. Energy is stored in the inductor according to the equation:

$$EL = 1/2 (L I_{pk}^2) \quad \text{where } I_{pk} = (t_{ON}) \cdot (V_{BATT} - V_{CEsat})/L$$

An internal oscillator controls the coil switch. During the time the coil switch is on, the coil is connected between VDD and the saturation voltage of the coil switch.

While the coil is connected between VDD and coil switch and a magnetic field develops in the coil. When the coil switch turns off, the switch opens, the magnetic field collapses and the voltage across the coil rises. The internal diode forward biases when the coil voltage rises above the H-Bridge voltage and the energy enters the EL lamp. Each pulse increases the voltage across the lamp in discrete steps.

As the voltage approaches its maximum, the steps become smaller. See *Figure 4*.

The brightness of the EL lamp output is directly related to energy recovery in the boost converter. There are many variations among coils such as magnetic core differences, winding differences and parasitic capacitances. For suggested coil suppliers, see "*Coil Manufacturers*."

Oscillator

The internal oscillator generates a high frequency clock used by the boost converter and H-Bridge. An external resistor from VDD to ROSC sets the oscillator frequency. Typically a 560KΩ resistor sets the frequency to 44.0KHz. The high frequency clock directly controls the coil switch.

This high frequency clock is divided by 128 to generate a low frequency clock which controls the EL H-Bridge and sets the EL lamp frequency. The oscillator has low sensitivity to temperature and supply voltage variations, increasing the performance of the EL driver over the operating parameters.

Dual H-Bridge

The H-Bridge consists of two proprietary low on-resistance high voltage switches, and two NPN transistors that control how the lamp is charged. There are four operating states that can be applied to the ZSP4491. See *Table 1*.

Setting ELEN1 to HIGH always activates the H-Bridge and illuminates the lamp connected between EL1 and ELcommon. Setting ELEN2 to HIGH always activates the H-Bridge and illuminates the lamp connected between EL2 and ELcommon. If both ELEN1 and ELEN2 are set to HIGH then both lamps are illuminated. Setting both ELEN1 and ELEN2 to LOW disables the outputs and places the circuit in a low power state. The EL driver illuminates the lamp by applying the high voltage supply of the boost converter to the lamp terminals through the H-Bridge and then switching the terminal polarity between the high voltage supply and ground at a constant frequency. This applies an AC voltage to the lamp that is twice the peak output voltage of the boost driver. An AC voltage greater than the 40V across the terminals of the lamp is typically necessary to adequately illuminate the EL lamp.



Design Considerations

Inductor Selection

If limiting peak current draw from the power supply is important, small coil values (<1mH) may need a higher oscillator frequency. Inductor current ramps faster in a lower inductance coil than a higher inductance coil for a given coil switch on time period, resulting in higher peak coil currents.

It is important to observe the saturation current rating of a coil. When this current is exceeded, the coil is incapable of storing any more energy and then ceases to act as an inductor. Instead, the coil behaves according to its series DC resistance.

Since small coils (<1mH) have inherently low series DC resistance, the current can peak dramatically through a small coil during saturation. This situation results in wasted energy not stored in the magnetics of the coil but expressed as heating which could lead to failure of the coil. Generally, selecting a coil with lower series DC resistance will result in a system with higher efficiency and lamp brightness.

Lamp Effects

EL lamp parameters vary between manufacturers. Series DC resistance, lighting efficiency and lamp capacitance per area differ the most overall. Larger lamps require more energy to illuminate. Lowering the oscillator frequency allows more energy to be stored in the coil during each coil switch cycle and increases lamp brightness. The oscillator frequency can be lowered to a point where the lamp brightness then begins to drop because the lamp frequency must be above a critical frequency (approx. 100Hz) to light. Lamp color is affected by the switching frequency of the EL driver. Green EL lamps will emit a more blue light as EL lamp frequency increases.

Noise Decoupling on Logic Inputs

If EL1/EL2 or ON/OFF are connected to traces susceptible to noise, it may be necessary to connect bypass capacitor of approximately 10nF between EL1/EL2 and Vss, and ON/OFF and Vss. If these inputs are driven by a microprocessor which provides a low impedance HIGH and LOW signal, then noise bypassing may not be necessary.

Increasing Light Output

EL lamp light output can be improved by connecting a fast recovery diode from the COIL pin to the CAP pin. The internal diode is bypassed resulting in an increase in light output at the EL lamp. We suggest a fast recovery diode such as the industry standard 1N4148.

The optimal value of C_{INT} will vary depending on the lamp parameters and coil value. Lower C_{INT} values can decrease average supply current but higher C_{INT} values can increase lamp brightness. This is best determined by experimentation. A rule of thumb is larger coils (1mH) are paired with a smaller C_{INT} (680pF) and smaller coils (470uH) are paired with a larger C_{INT} (1800pF).

Changing the EL lamp Output Voltage Waveform

Designers can alter the sawtooth output voltage waveform to the EL lamp. Increasing the capacitance of the integration capacitor, C_{INT}, will integrate the sawtooth waveform making it appear more like a square wave.



ASIX

ZSP4491 Two Panel Electroluminescent Lamp Driver

Printed Circuit Board Layout Suggestions

The EL driver's high-frequency operation makes PCB layout important for minimizing electrical noise. Keep the IC's GND pin and the ground leads of C1 and CINT less than 0.2in (5mm) apart. Also keep the connections to the COIL pin as short as possible. To maximize output power and efficiency and minimize output ripple voltage, use a ground plane and solder the IC's VSS pin directly to the ground plane.

EL Lamp Driver Design Challenges

There are many variables which can be optimized for specific applications. The amount of light emitted is a function of the voltage applied to the lamp, the frequency at which is applied, the lamp material, the lamp size, and the inductor used. ASIX supplies characterization charts to aid the designer in selecting the optimum circuit configuration.

ASIX will perform customer application evaluations, using the customer's actual EL lamp to determine the optimum operating conditions for specific applications. For customers considering an EL backlighting solution for the first time, ASIX is able to provide retrofits to non-backlit products for a thorough electrical and cosmetic evaluation. Please contact your local ASIX sales representative or the ASIX factory directly to initiate this valuable service.

6 Typical Application

Contact the factory for any technical or application support.

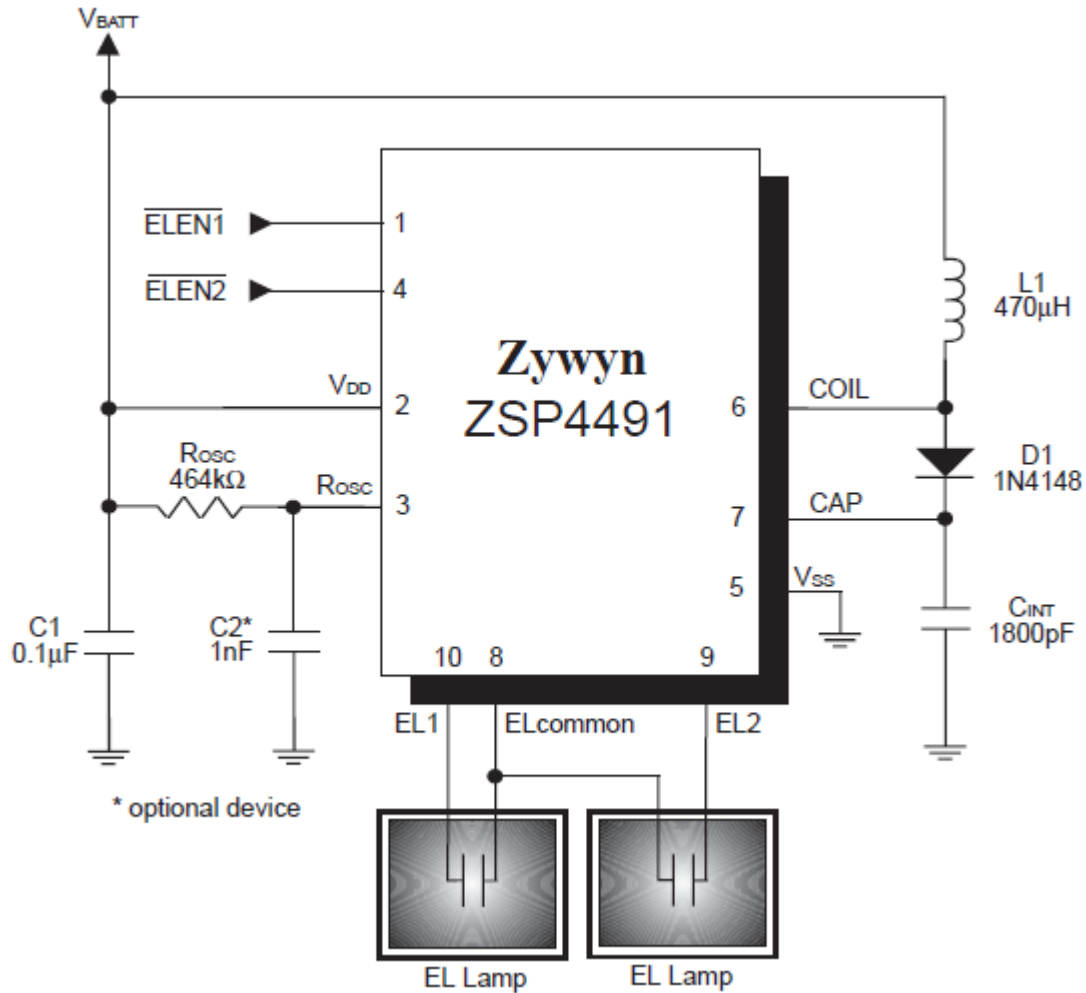


Figure 2. Typical Application Circuit

7 Test Circuit

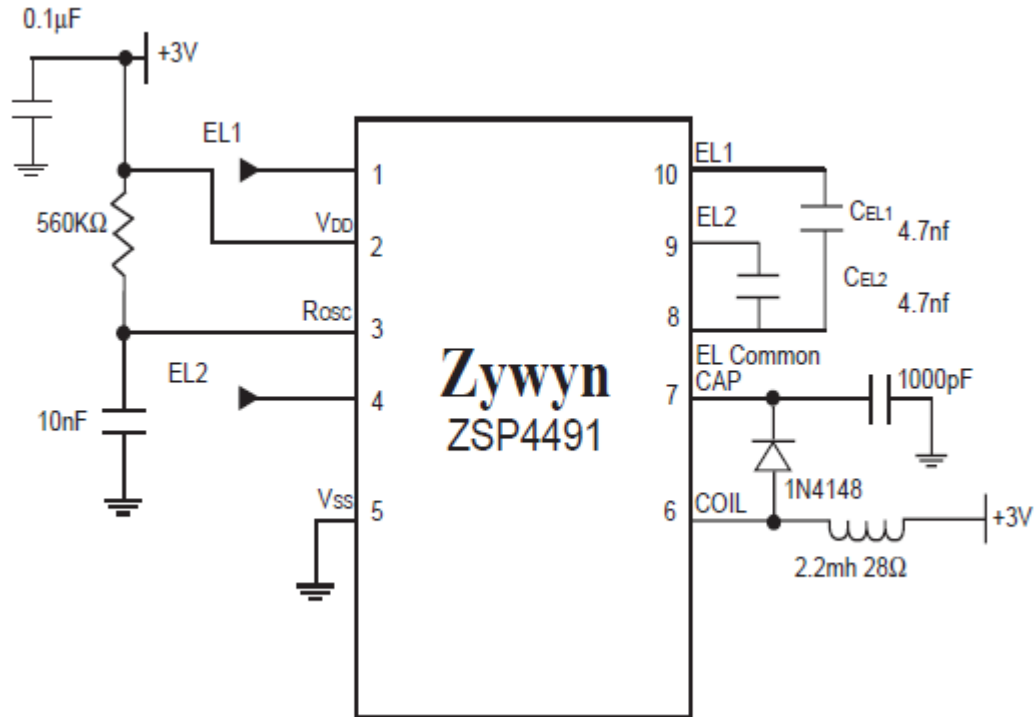


Figure 3. Test Circuit Diagram

8 Waveforms

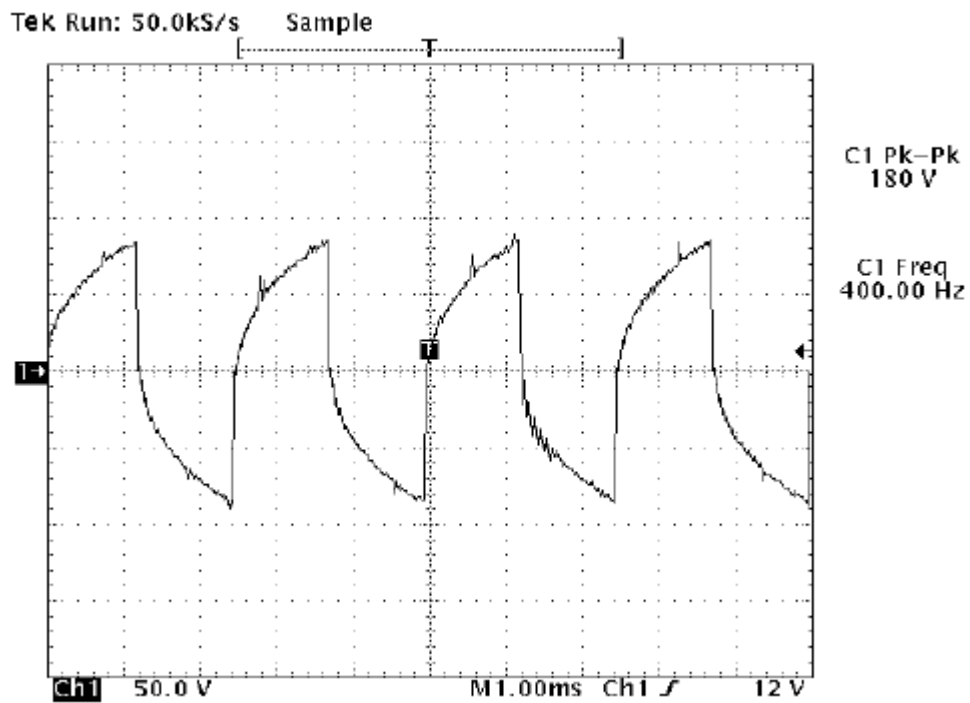
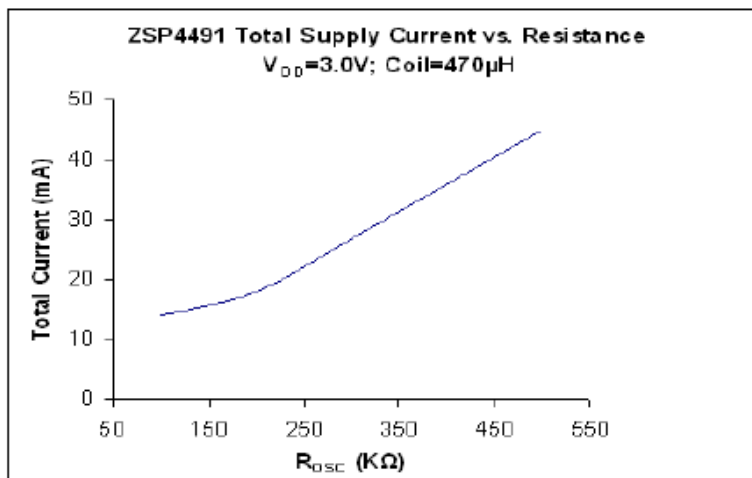
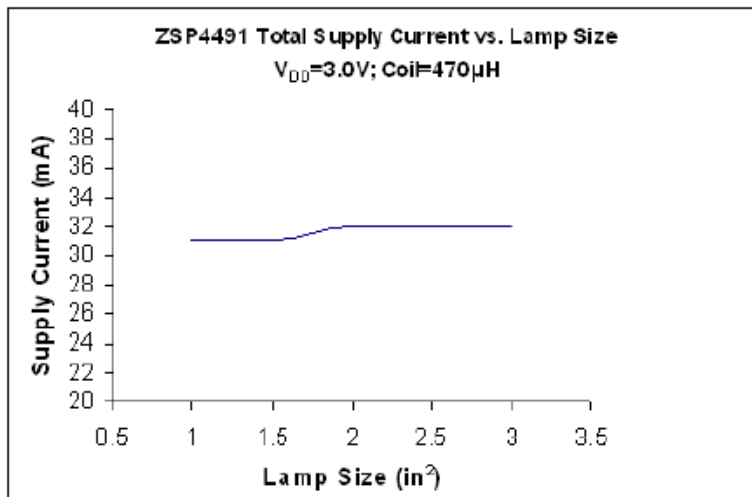
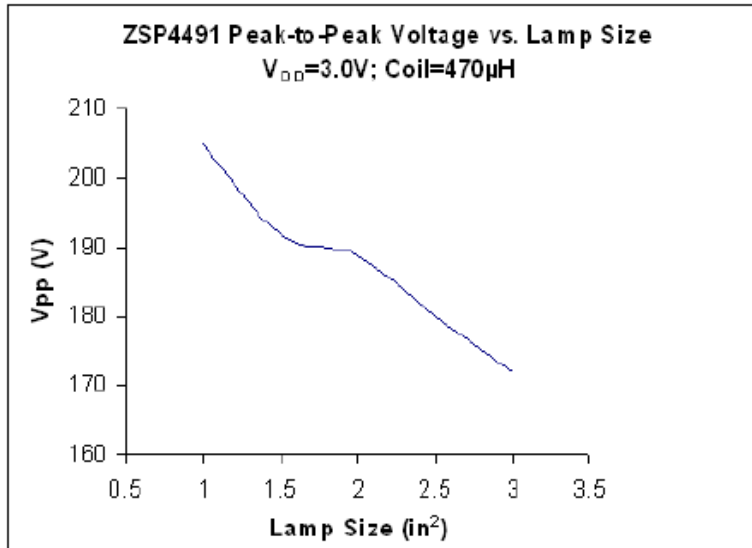


Figure 4. Typical EL Lamp Voltage Waveform

9 Typical Performance Characteristics



10 Manufacturers

Coil Manufacturers

Hitachi Metals

Material Trading Division
2101 S. Arlington Heights Road,
Suite 116
Arlington Heights, IL 60005-4142
Phone: 1-800-777-8343 Ext. 12
(847) 364-7200 Ext. 12
Fax: (847) 364-7279

Hitachi Metals Ltd. Europe

Immernannstrasse 14-16, 40210
Dusseldorf, Germany
Contact: Gary Loos
Phone: 49-211-16009-0
Fax: 49-211-16009-29

Hitachi Metals Ltd.

Kishimoto Bldg. 2-1, Marunouchi
2-chome, Chiyoda-Ku, Tokyo,
Japan
Contact: Mr. Noboru Abe
Phone: 3-3284-4936
Fax: 3-3287-1945

Hitachi Metals Ltd. Singapore

78 Shenton Way #12-01,
Singapore 079120
Contact: Mr. Stan Kaiko
Phone: 222-8077
Fax: 222-5232

Hitachi Metals Ltd. Hong Kong

Room 1107, 11/F., West Wing,
Tsim Sha. Tsui Center 66
Mody Road, Tsimshatsui East,
Kowloon, Hong Kong
Phone: 2724-4188
Fax: 2311-2095

Murata

2200 Lake Park Drive, Smyrna
Georgia 30080 U.S.A.
Phone: (770) 436-1300
Fax: (770) 436-3030

Murata European

Holbeinstrasse 21-23, 90441
Numberg, Postfachanschrift 90015
Phone: 011-4991166870
Fax: 011-49116687225

Murata Taiwan Electronics

225 Chung-Chin Road, Taichung,
Taiwan, R.O.C.
Phone: 011 88642914151
Fax: 011 88644252929

Murata Electronics Singapore

200 Yishun Ave. 7, Singapore
2776, Republic of Singapore
Phone: 011 657584233
Fax: 011 657536181

Murata Hong Kong

Room 709-712 Miramar Tower, 1
Kimberly Road, Tsimshatsui,
Kowloon, Hong Kong
Phone: 011-85223763898
Fax: 011-85223755655

Panasonic.

6550 Katella Ave
Cypress, CA 90630-5102
Phone: (714) 373-7366
Fax: (714) 373-7323

Sumida Electric Co., LTD.

5999, New Wilke Road,
Suite #110
Rolling Meadows, IL, 60008 U.S.A.
Phone: (847) 956-0666
Fax: (847) 956-0702

Sumida Electric Co., LTD.

4-8, Kanamachi 2-Chrome,
Katsushika-ku, Tokyo 125 Japan
Phone: 03-3607-5111
Fax: 03-3607-5144

Sumida Electric Co., LTD.

Block 15, 996, Bendemeer Road
#04-05 to 06, Singapore 339944
Republic of Singapore
Phone: 2963388
Fax: 2963390

Sumida Electric Co., LTD.

14 Floor, Eastern Center, 1065
King's Road, Quarry Bay,
Hong Kong
Phone: 28806688
Fax: 25659600

Polarizers/Transflector Manufacturers

Nitto Denko

Yoshi Shinozuka
Bayside Business Park 48500
Fremont, CA. 94538
Phone: 510 445 5400
Fax: 510 445-5480

Top Polarizer- NPF F1205DU

Bottom - NPF F4225
or (F4205) P3 w/transflector

Transflector Material

Astra Products
Mark Bogin
P.O. Box 479
Baldwin, NJ 11510
Phone (516)-223-7500
Fax (516)-868-2371

EL Lamp Manufacturers

Leading Edge Ind. Inc.

11578 Encore Circle
Minnetonka, MN 55343
Phone 1-800-845-6992

Midori Mark Ltd.

1-5 Komagata 2-Chome
Taita-Ku 111-0043 Japan
Phone: 81-03-3848-2011

NEC Corporation

Yumi Saskai
7-1, Shiba 5 Chome, Minato-ku,
Tokyo 108-01, Japan
Phone: (03) 3798-9572
Fax: (03) 3798-6134


Seiko Precision

Shuzo Abe
1-1, Taihei 4-Chome,
Sumida-ku, Tokyo, 139 Japan
Phone: (03) 5610-7089
Fax: (03) 5610-7177

Gunze Electronics

2113 Wells Branch Parkway
Austin, TX 78728
Phone: (512) 752-1299
Fax: (512) 252-1181

11 Ordering Information

Part Number	Temperature Range	Package Type	Green Package
ZSP4491EU	-40°C to +85°C	10-pin MSOP	N/A
ZSP4491LEU	-40°C to +85°C	10-pin MSOP Green	
ZSP4491CX	0°C to +70°C	Die in Wafflepack Form	N/A
ZSP4491CW	0°C to +70°C	Die in Wafer Form	N/A
ZSP4491UEB	N/A	MSOP Evaluation Board	N/A

Please contact the factory for pricing and availability on Tape-on-Reel options.

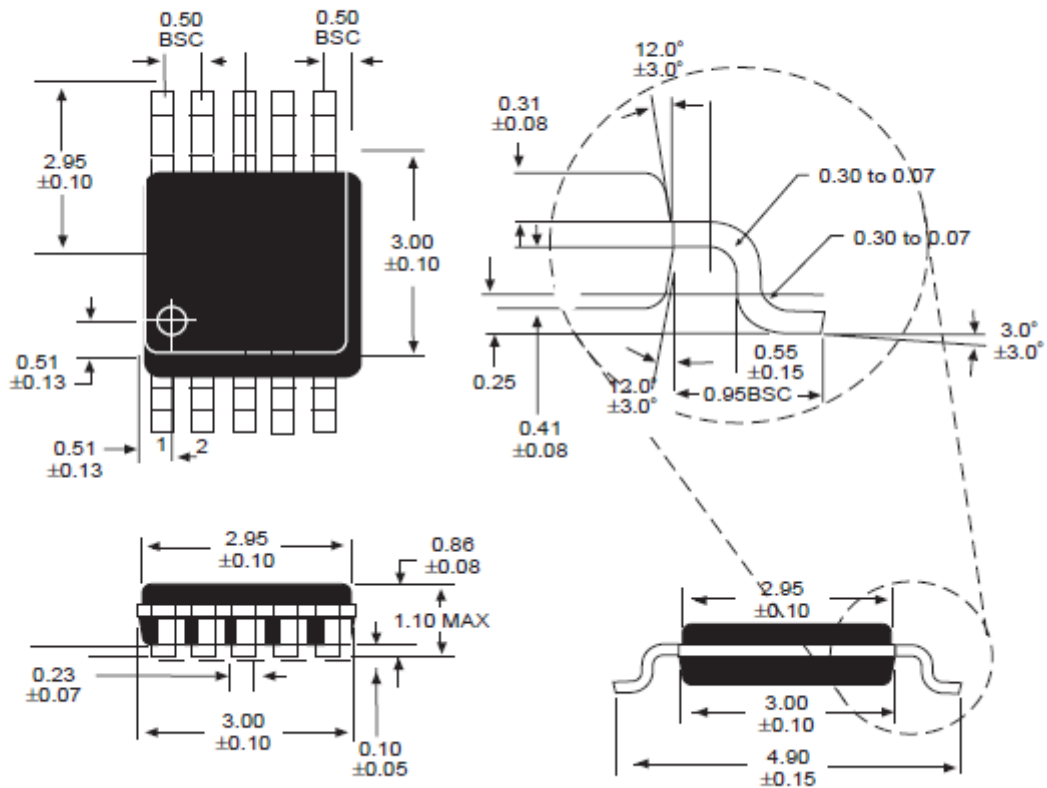


Please contact the factory for EL driver design support and availability of custom-made evaluation demo boards. See our web site for AN007 Application Note regarding requirements for custom-made evaluation demo boards.

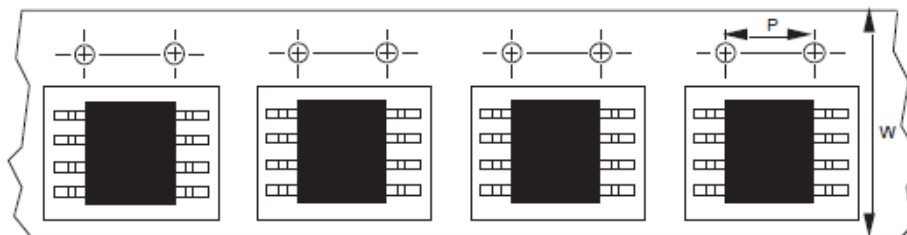
12 Package Information

All package dimensions in millimeters

10-Pin MSOP



50 ZSP4491EU devices per tube



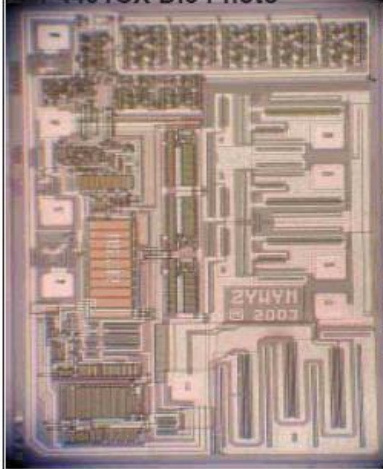
MSOP-10 13" reels: P=8mm, W=12mm

Package	Minimum qty per reel	Standard qty per reel	Maximum qty per reel
EU	500	2500	3000



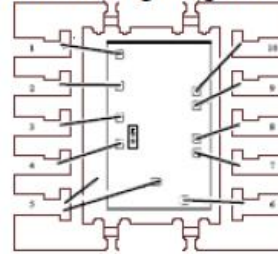
13 Die Sales Information

ZSP4491CX Die Photo



Die size is 54 x 84 mils².
 Die Mask number is MS132.
 Die substrate down-bonds to Vss (GND).
 Die thickness is 11 mils +/- 1.
 Bond pad size is 68 x 98 mils².
 Minimum Ordering Quantity (MOQ) for ZSP4491CX die in waferpack form is 400 units per wafer.

ZSP4491CX Bonding Diagram



Scale: 30X		Size	
		3	10 mm
BRAND SHEET#	ZSP4491CX-1B		
DRIVE #	ZSP4491CX		
DIE ID#	MS132	DIE SIZE:	54 X 84 MILS
PACKAGE TYPE	10-LED M50P	PAD SIZE (Maximum):	68 X 98 MILS
PACKAGE DIMENSIONS:	1.5mm (118") Body	PAD SIZE (Minimum):	68 X 98 MILS
DIE/Package Code	M50P	WIRE SIZE & TYPE	1.0 - 1.5 MIL Au
DIE ATTACH MAT.	84-1LMB04	MOLD COMPOUND:	Durafone EME-6000

ZSP4491CW Die in Wafer Form Packed in Wafer Box



A carton measures 46.6cm x 20.8cm x 24.3cm (length x width x height) can carry 2 square-type wafer boxes ("EMPAK") of 5 inch wafer products. Each EMPAK can hold a maximum of 24 wafers in a box.



ZSP4491CW Wafer Box Bar-Code Labeling





Revision History

Revision	Date	Comment
V0.3	2005/07/01	Initial release to customers
V2.00	2015/06/10	<ol style="list-style-type: none">1. Changed to ASIX Electronics Corp. logo, strings and contact information.2. Added ASIX copyright legal header information.3. Modified the Revision History table format.4. Modified some Vpp descriptions.



ASIX

ZSP4491 Two Panel Electroluminescent Lamp Driver



ASIX Electronics Corporation.

4F, No. 8, Hsin Ann Rd., HsinChu Science Park,
HsinChu, Taiwan, R.O.C.

TEL: 886-3-5799500

FAX: 886-3-5799558

Sales Email: sales@asix.com.tw

Support Email: support@asix.com.tw

Web: <http://www.asix.com.tw>