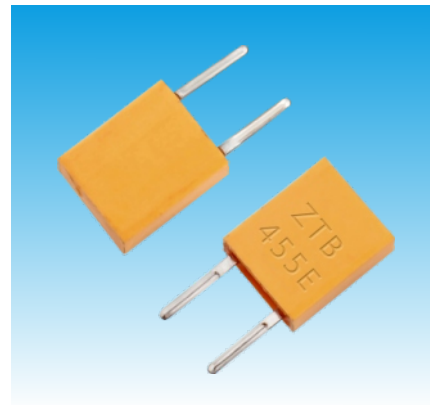


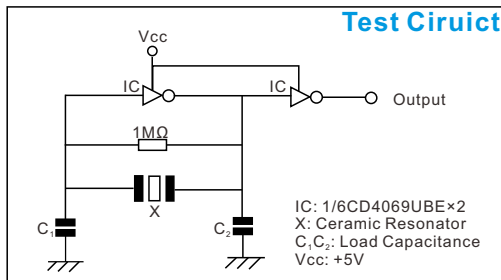
Features

- Highly reliable design with excellent environmental resistance
- Standardized for use in low profile devices
- Low cost
- Applications: Security, Consumer device, TV, Radio, Receiver, etc.



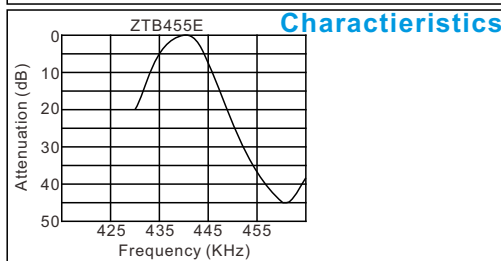
Standard Specification

Part Number		Frequency Accuracy (at 25°C)	Resonator Impedance	Frequency Stability	Aging for Ten Years	Load Capacitance C ₁ (pF)	Load Capacitance C ₂ (pF)
DIP Type	SMD Type						
ZTB190-249E		±1KHz	≤20	±0.3%	±0.3%	330	470
ZTB250-374E		±1KHz	≤20	±0.3%	±0.3%	220	470
ZTB375-429E	ZTB375-429Y	±1KHz	≤20	±0.3%	±0.3%	120	470
ZTB430-509E	ZTB430-509Y	±2KHz	≤20	±0.3%	±0.3%	100	100
ZTB510-699E	ZTB510-699Y	±2KHz	≤20	±0.3%	±0.3%	100	100
ZTB700-1250E	ZTB700-1250Y	±0.5%	≤70	±0.3%	±0.3%	100	100



DIP Type Dimensions

Frequency Range (KHz)	Width W (mm)	Thickness T (mm)	Height H (mm)	Lead Space S (mm)	Lead Length L (mm)
190~249	13.5	3.8	14.7	10.0	8.0
250~374	11.0	3.8	12.2	10.0	1.0
375~400	7.9	3.6	9.3	7.7	7.0
401~699	7.0	3.5	9.0	5.0	4.0 (6.0)
700~1250	5.2	2.8	6.8	2.5	3.5



Dimensions For SMD Type [mm]

