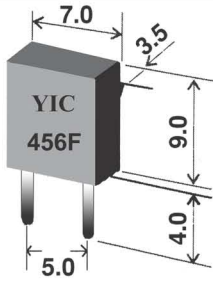


YIC

Ceramic Resonator, Filter (ZTB/LT/SFU Series)

ZTB456F Series for FM Multiplexers

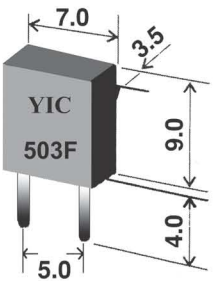
456KHz



Part Number	Frequency Accuracy	Applied IC
ZTB456F11	19.000KHz \pm 38Hz	LA3430(SANYO)
ZTB456F14	19.000KHz \pm 38Hz	TA7413AP(TOSHIBA)
ZTB456F15	456KHz \pm 2KHz	LA1382(SANYO)
ZTB456F16	19.000KHz \pm 38Hz	TA8122N(TOSHIBA)
ZTB456F18	19.000KHz \pm 38Hz	TA8132N(TOSHIBA)
ZTB456F33	456KHz \pm 2KHz	LA2232(SANYO)

ZTB503/500F Series for TV Horizontal Synthesizer Circuits

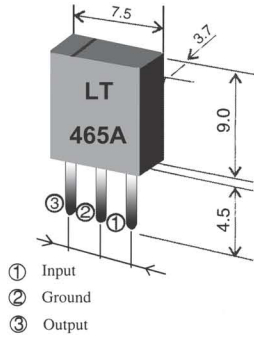
500/503KHz



Part Number	Frequency Accuracy	Applied IC
ZTB503F2	503.5KHz \pm 2KHz	μ PC1401(NEC)
ZTB503F5	504.5KHz \pm 2KHz	LA7620(SANYO)
ZTB503F6	519.0 KHz \pm 2KHz	M5130(MITSUBISHI)
ZTB503F10	15.734KHz \pm 0.5%	TA7777P(TOSHIBA)
ZTB503F12	503.5KHz \pm 2KHz	TDA3586(THOMSON)
ZTB503F15	505.1KHz \pm 2KHz	LA7650(SANYO)
ZTB503F30	503.5KHz \pm 1.5KHz	TA8654AN(TOSHIBA)
ZTB503F38	15.734KHz \pm 62KHz	AN5302(MATSUSHITA)
ZTB500F2	500.0KHz \pm 2KHz	μ PC1401(NEC)
ZTB500F9	500.0KHz \pm 2KHz	M51308SP(MITSUBISHI)
ZTB500F13	500.0KHz \pm 2KHz	M51367SP(MITSUBISHI)
ZTB500F28	15.680KHz \pm 0.4%	LA76800(SANYO)
ZTB500F40	15.680KHz \pm 0.4%	TA8691N(TOSHIBA)
ZTB500F55	15.680KHz \pm 0.4%	LA7685(SANYO)

LT Series of Ceramic Filter for Radio-Cassette Recorder

450-470KHz



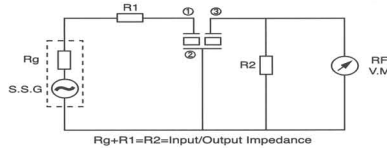
- ① Input
- ② Ground
- ③ Output

TECHNICAL CHARACTERISTICS

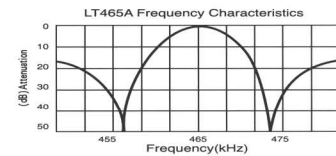
PartNumber	Insertion Loss (dB)	Pass Band Width (kHz)	Stop Band Att(dB) fo \pm 100 kHz	Selectivity \pm 9KHz off(dB)	Ripple (dB)	Input/Output Impedance (K Ω)
LT 465A1	\leq 3	\geq 8	\geq 12	\geq 11	\leq 1	2

Center frequency (fo) is available in a range of 450-470kHz
The nominal frequency tolerance is \pm 2kHz

TEST CIRCUIT

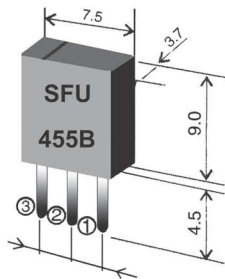


CHARACTERISTICS



SFU Series of Ceramic Filter for AM

450-470KHz



- ① Input
- ② Ground
- ③ Output

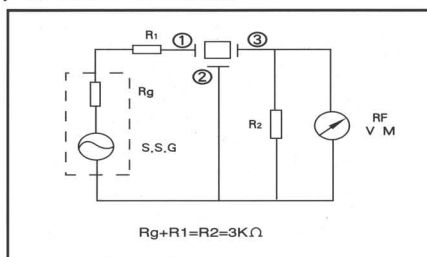
TECHNICAL CHARACTERISTICS

PartNumber	3dB Band Width(kHz)	Selectivity \pm 9KHz (dB)		Insertion Loss (dB)	Composition
		-9KHz off	+9KHz off		
SFU455A	10 \pm 3	\geq 5	\geq 3	\geq 5	1 elements
SFU455B	10 \pm 3	\geq 5	\geq 3	\geq 5	1 elements With IFT

Center frequency (fo) is available in a range of 450-470kHz
The nominal frequency tolerance is \pm 2kHz

RECOMMENDED IFT (7mmSquare) TEST CIRCUIT

Type	SFU455B		
Item	① ~ ②	② ~ ③	④ ~ ⑥
	70T	115T	7T
Unload Qu	105		
Tuning Capacity	180PF		



CHARACTERISTICS

