

RESONATOR

ZTB 500F

LEADED TYPE

500KHz



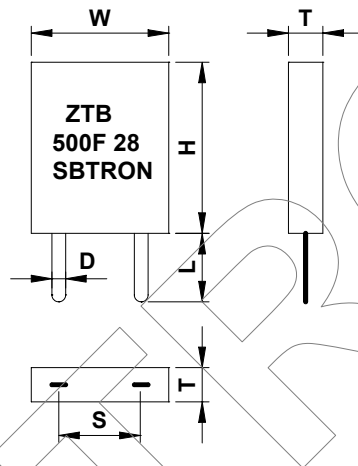
APPLICATIONS

- ▶ TV synthesizer circuits
- ▶ Micro processor
- ▶ Home appliance
- ▶ Communications

TECHNICAL CHARACTERISTICS

Part no.	Frequency accuracy (@ +25 °C)	Stability in temperature (-20 °C ~ 80 °C)	Resonant impedance	Aging (10 Years)	Applicable IC.
ZTB 500F 2	500.0KHz ± 2KHz	±0.3 %	≤ 20Ω	±0.3 %	uPC1401 / NEC
ZTB 500F 9	500.0KHz ± 2KHz	±0.3 %	≤ 20Ω	±0.3 %	M51308SP / MITSUBISHI
ZTB 500F 13	500.0KHz ± 2KHz	±0.3 %	≤ 20Ω	±0.3 %	M51367SP / MITSUBISHI
ZTB 500F 28	15.680KHz ± 0.4%	±0.3 %	≤ 20Ω	±0.3 %	LA7680 / SANYO
ZTB 500F 40	15.680KHz ± 0.4%	±0.3 %	≤ 20Ω	±0.3 %	TA8691N / TOSHIBA
ZTB 500F 55	15.680KHz ± 0.4%	±0.3 %	≤ 20Ω	±0.3 %	LA7685 / SANYO

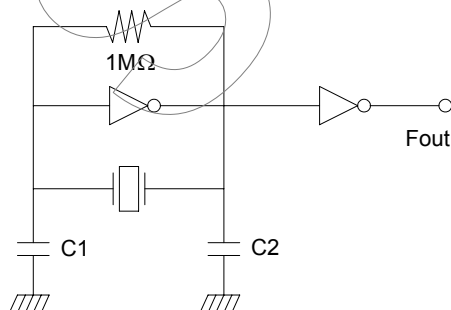
DIMENSIONS



Code Part no.	Dimensions (mm)					
	W	T	H	S	L	D
ZTB 456F Series	7.0	3.5	9.0	5.0	4.0	1.0

Specifications subjects to change without notice & If you need other specifications, Contact our factory.

APPLICATION CIRCUIT



IC : 74HCU04 or 4069UBP
 X : Ceramic resonator
 C1 : External capacitor
 C2 : External capacitor
 V_{DD} : +5Volt