

# Coaxial Frequency Mixer

## ZX05-C60LH-S+

Level 10 (LO Power +10 dBm) 1600 to 6000 MHz



CASE STYLE: FL905

Connectors	Model
SMA	ZX05-C60LH-S+

**+RoHS Compliant**

The +Suffix identifies RoHS Compliance. See our web site for RoHS Compliance methodologies and qualifications

### Maximum Ratings

Operating Temperature	-40°C to 85°C
Storage Temperature	-55°C to 100°C
RF Power	50mW
IF Current	40mA

Permanent damage may occur if any of these limits are exceeded.

### Coaxial Connections

LO	1
RF	2
IF	3

### Features

- rugged construction
- small size
- low conversion loss
- high L-R isolation
- protected by US Patents 6,790,049 & 7,027,795

### Applications

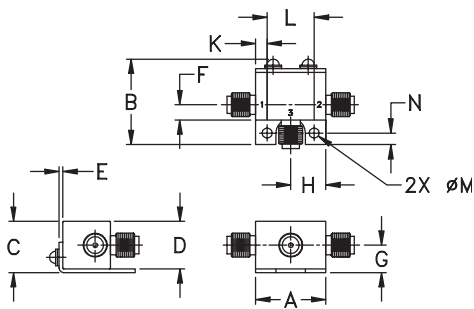
- cellular
- PCS
- instrumentation
- satellite communication

### Electrical Specifications (T<sub>AMB</sub>=25°C)

FREQUENCY (MHz)	CONVERSION LOSS (dB)	LO-RF ISOLATION (dB)		LO-IF ISOLATION (dB)		IP3 at center band (dBm)	
		Typ.	Min.	Typ.	Min.		
1600-6000	DC-2000						
1600-4400	DC-2000	6.3	0.1	8.5	35	23	13
4400-6000	DC-2000	6.0	0.1	8.3	27	20	11

1 dB COMP: +5 dBm typ.  
Conversion Loss specification at 30 MHz IF

### Outline Drawing



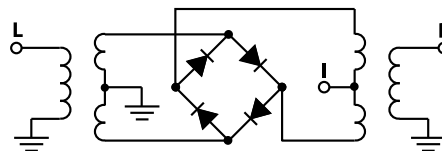
### Outline Dimensions (inch/mm)

A	B	C	D	E	F	G
.74	.90	.54	.50	.04	.16	.29
18.80	22.86	13.72	12.70	1.02	4.06	7.37
H	J	K	L	M	N	wt
.37	--	.122	.496	.106	.122	grams
9.40	--	3.10	12.60	2.69	3.10	20.0

### Typical Performance Data

Frequency (MHz)		Conversion Loss (dB)	Isolation L-R (dB)	Isolation L-I (dB)	VSWR RF Port (:1)	VSWR LO Port (:1)
RF	LO	LO +10dBm	LO +10dBm	LO +10dBm	LO +10dBm	LO +10dBm
1700.10	1730.11	6.59	33.55	17.79	2.27	3.57
1920.56	1950.57	5.91	43.58	20.00	2.42	2.46
2141.01	2171.02	5.69	31.78	18.73	2.27	2.18
2361.47	2391.48	5.50	31.56	18.41	2.13	1.93
2581.93	2611.94	5.38	33.00	17.67	1.65	1.86
2802.38	2832.39	5.57	36.30	18.26	1.78	2.10
3022.84	3052.85	6.06	35.33	18.50	2.50	1.97
3243.30	3273.31	6.34	37.11	17.87	2.07	2.40
3463.75	3493.76	6.72	37.99	15.73	2.67	2.37
3684.21	3714.22	7.24	36.04	13.60	2.93	2.96
3904.66	3934.67	7.14	34.06	14.83	2.88	3.40
4125.12	4155.13	7.15	33.41	15.53	2.88	2.75
4400.10	4430.11	6.52	34.87	18.12	2.65	3.20
4676.26	4706.27	6.17	33.98	19.74	2.47	3.29
4896.72	4926.73	6.48	33.26	22.54	3.32	1.93
5117.17	5147.18	5.57	27.67	25.33	1.95	1.23
5337.63	5367.64	5.89	24.83	25.13	2.48	1.40
5558.09	5588.10	5.56	23.69	24.63	2.20	1.74
5778.54	5808.55	5.48	22.62	15.27	1.84	2.73
5999.00	5968.99	6.49	23.51	11.54	1.19	5.84

### Electrical Schematic



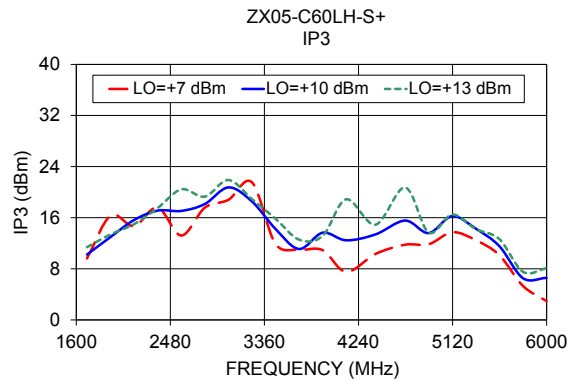
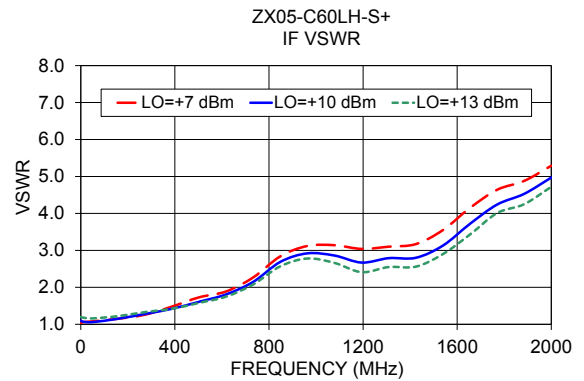
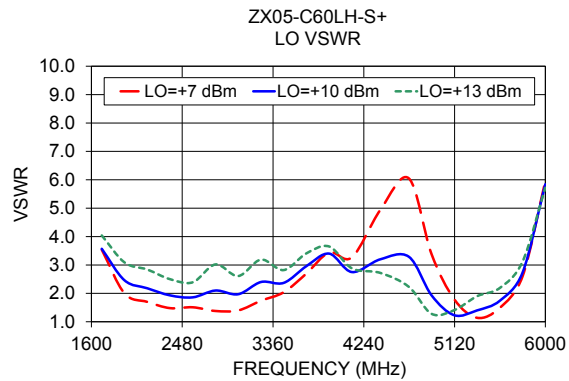
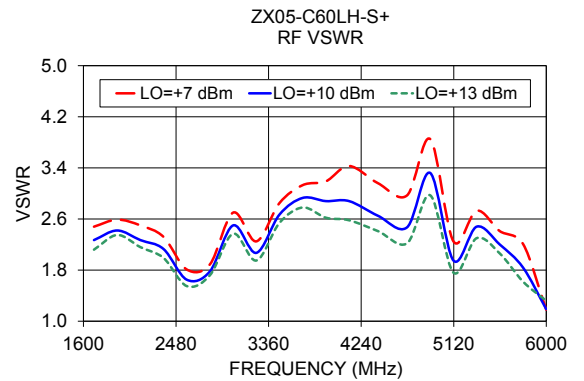
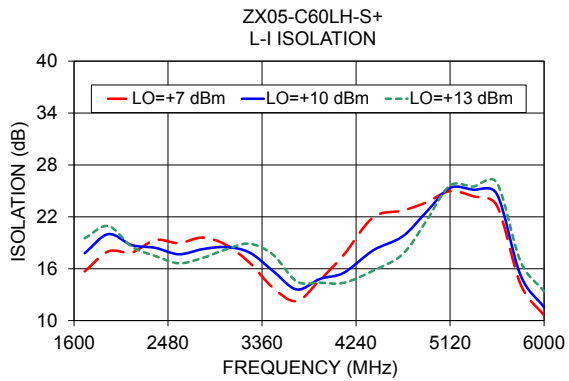
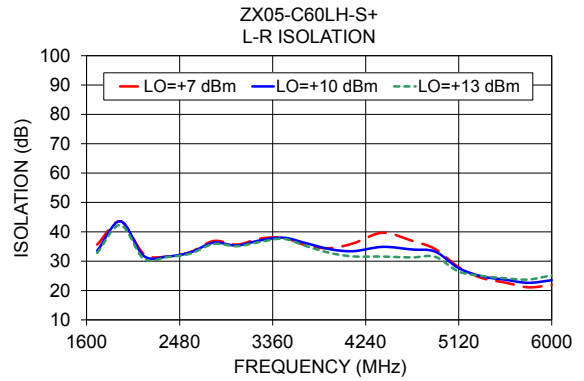
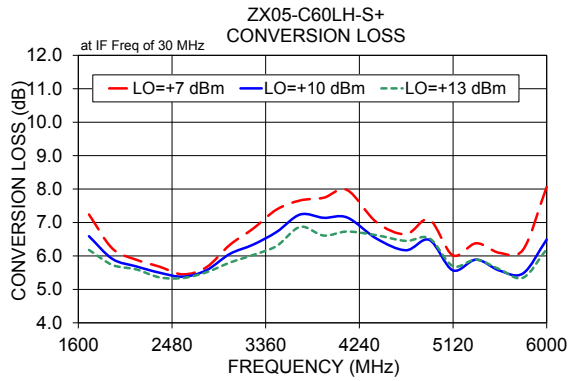
### Notes

- Performance and quality attributes and conditions not expressly stated in this specification document are intended to be excluded and do not form a part of this specification document.
- Electrical specifications and performance data contained in this specification document are based on Mini-Circuit's applicable established test performance criteria and measurement instructions.
- The parts covered by this specification document are subject to Mini-Circuit's standard limited warranty and terms and conditions (collectively, "Standard Terms"); Purchasers of this part are entitled to the rights and benefits contained therein. For a full statement of the Standard Terms and the exclusive rights and remedies thereunder, please visit Mini-Circuit's website at [www.minicircuits.com/MCLStore/terms.jsp](http://www.minicircuits.com/MCLStore/terms.jsp)

**Mini-Circuits**

[www.minicircuits.com](http://www.minicircuits.com) P.O. Box 350166, Brooklyn, NY 11235-0003 (718) 934-4500 sales@minicircuits.com

REV. F  
M171494  
ZX05-C60LH-S+  
RVN/TD/CP/AM  
181213  
Page 1 of 2



**Notes**

- A. Performance and quality attributes and conditions not expressly stated in this specification document are intended to be excluded and do not form a part of this specification document.
- B. Electrical specifications and performance data contained in this specification document are based on Mini-Circuit's applicable established test performance criteria and measurement instructions.
- C. The parts covered by this specification document are subject to Mini-Circuits standard limited warranty and terms and conditions (collectively, "Standard Terms"); Purchasers of this part are entitled to the rights and benefits contained therein. For a full statement of the Standard Terms and the exclusive rights and remedies thereunder, please visit Mini-Circuits' website at [www.minicircuits.com/MCLStore/terms.jsp](http://www.minicircuits.com/MCLStore/terms.jsp)

