

# iW628 Product Brief

## Adaptive Voltage Position Monitor

### 1.0 Features

- Fast voltage undershoot detection
- “Normally-OFF” with <100uA cut-off current during normal operation
- Wide operating voltage range from 2.5V to 15V
- Built-in opto-coupler LED driver with minimum driving current of 2mA
- Wide operating temperature range from -40 °C to 150 °C

### 2.0 Description

The iW628 is an adaptive voltage position monitor to detect voltage undershoot. It can be used in iWatt’s primary-side control systems to achieve ultra-low no-load power consumption and fast dynamic load response. The iW628 operates at “normally-OFF” mode with negligible power consumption during power supply normal steady state operation, while monitoring dynamic load change through user-configurable voltage position sense pin. The iW628 eliminates loop compensation components at the secondary side and it has a built-in opto-coupler LED driver to minimize the bill of material cost.

iWatt’s innovative proprietary technology ensures that power supplies designed with the iW628 and iWatt’s primary-side controller can achieve less than 10mW no-load power consumption in typical 5V2A AC/DC charger/adaptor designs and less than 20mW for 12V2A designs while maintaining fast dynamic load response.

### 3.0 Applications

- Precision voltage reference
- AC/DC chargers/adapters

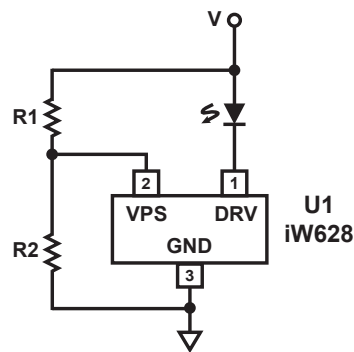


Figure 3.1: iW628 Typical Application Circuit (LED is on when  $V_{VPS} < \text{internal } V_{REF}$ )

# iW628 Product Brief

## Adaptive Voltage Position Monitor

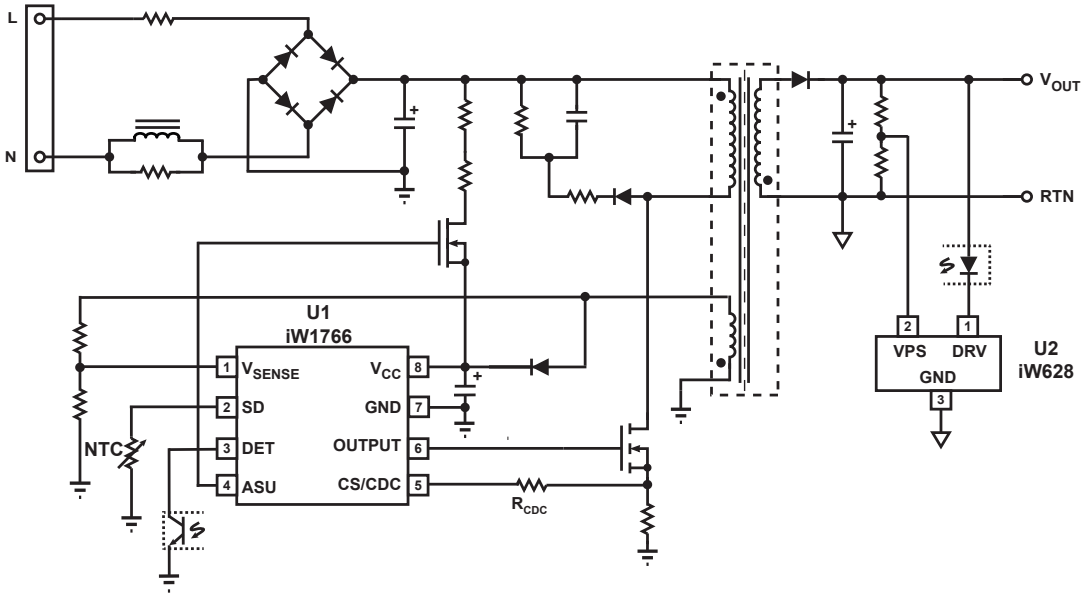


Figure 3.2: iW628 Typical Application Circuit (Using iW1766 as Primary-Side Controller)  
(Achieving < 10mW No-Load Power Consumption in 5V2A Adapter Designs with Fast Dynamic Load Response)

### 4.0 Pinout Description

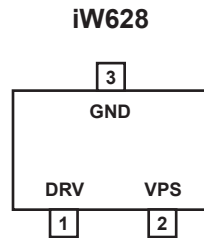


Figure 4.1: 3 Lead SOT-23 Package

Pin #	Name	Type	Pin Description
1	DRV	Power Input and Analog Output	IC power supply and external circuit drive. Provides the IC supply voltage and drives external circuit, such as the opto-coupler LED.
2	VPS	Analog Input	Voltage position sense. Power supply output voltage information to be compared with internal reference voltage.
3	GND	Ground	Ground.

### 5.0 Absolute Maximum Ratings

Absolute maximum ratings are the parameter values or ranges which can cause permanent damage if exceeded.

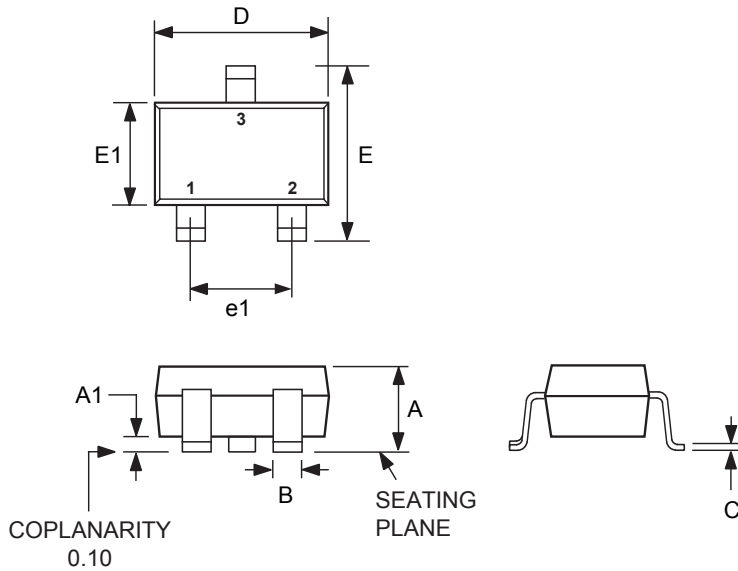
Parameter	Symbol	Value	Units
DRV (pin 1)	$V_{DRV}$	30	V
VPS input (pin 2)	$V_{VPS}$	-0.3 to 7	V
Continuous DC supply current at DRV pin ( $V_{DRV} = 16V$ )	$I_{DRV}$	25	mA
Maximum junction temperature	$T_{JMAX}$	150	°C
Operating junction temperature	$T_{JOPT}$	-40 to 150	°C
ESD rating per JEDEC JESD22-A114		2,000	V

# iW628 Product Brief

## Adaptive Voltage Position Monitor

### 6.0 Physical Dimensions

#### 3-Lead SOT-23 Package



Symbol	Inches		Millimeters	
	MIN	MAX	MIN	MAX
A	0.035	0.044	0.89	1.11
A1	0.001	0.004	0.01	0.10
B	0.015	0.020	0.37	0.50
C	0.003	0.007	0.09	0.18
D	0.110	0.120	2.80	3.04
E	0.083	0.104	2.10	2.64
E1	0.047	0.081	1.20	1.40
e1	0.070	0.020	1.78	2.04

Compliant to JEDEC Standard TO236

Controlling dimensions are in millimeters

This package is RoHS compliant, and conform to Halide free limits.

Soldering Temperature Resistance:

- [a] Package is IPC/JEDEC Std 020D Moisture Sensitivity Level 1
- [b] Package exceeds JEDEC Std No. 22-A111 for Solder Immersion resistance; packages can withstand 10 s immersion @ < 270 °C

Dimension D does not include mold flash, protrusions or gate burrs. Mold flash, protrusions or gate burrs shall not exceed 0.25 mm per end. Dimension E1 does not include interlead flash or protrusion. Interlead flash or protrusion shall not exceed 0.25 mm per side.

The package top may be smaller than the package bottom. Dimension D and E1 are determined at the outermost extremes of the plastic body exclusive of mold flash, tie bar burrs, gate burrs and interlead flash, but including any mismatch between the top and bottom of the plastic body.

### 7.0 Ordering Information

Part Number	Options	Package	Description
iW628-00	N/A	SOT23-3L	Tape & Reel <sup>1</sup>

Note 1: Tape & Reel packing quantity is 2,500 per reel. Minimum ordering quantity is 2,500.

# iW628 Product Brief

## Adaptive Voltage Position Monitor



### Trademark Information

© 2013 iWatt Inc. All rights reserved. iWatt, BroadLED, *EZ-EMI*, Flickerless, Intelligent AC-DC and LED Power, and PrimAccurate are trademarks of iWatt Inc. All other trademarks and registered trademarks are the property of their respective owners.

### Contact Information

Web: <https://www.iwatt.com>

E-mail: [info@iwatt.com](mailto:info@iwatt.com)

Phone: +1 (408) 374-4200

Fax: +1 (408) 341-0455

#### iWatt Inc.

675 Campbell Technology Parkway, Suite 150  
Campbell, CA 95008

### Disclaimer and Legal Notices

iWatt reserves the right to make changes to its products and to discontinue products without notice. The applications information, schematic diagrams, and other reference information included herein is provided as a design aid only and are therefore provided as-is. iWatt makes no warranties with respect to this information and disclaims any implied warranties of merchantability or non-infringement of third-party intellectual property rights.

This product is covered by the following patents: 6,385,059; 6,862,198; 6,900,995; 6,956,750; 6,990,000; 7,443,700; 7,505,287; 7,589,983; 6,972,969; 7,724,547; 7,876,582; 7,974,109; 8,018,743; 8,049,481. A full list of iWatt patents can be found at [www.iwatt.com](http://www.iwatt.com).

Certain applications using semiconductor products may involve potential risks of death, personal injury, or severe property or environmental damage ("Critical Applications").

**iWATT SEMICONDUCTOR PRODUCTS ARE NOT DESIGNED, INTENDED, AUTHORIZED, OR WARRANTED TO BE SUITABLE FOR USE IN LIFE-SUPPORT APPLICATIONS, DEVICES OR SYSTEMS, OR OTHER CRITICAL APPLICATIONS.**

Inclusion of iWatt products in critical applications is understood to be fully at the risk of the customer. Questions concerning potential risk applications should be directed to iWatt Inc.

iWatt semiconductors are typically used in power supplies in which high voltages are present during operation. High-voltage safety precautions should be observed in design and operation to minimize the chance of injury.