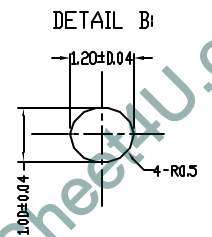
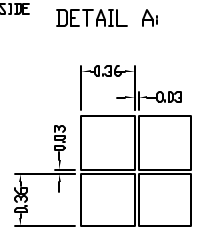


液晶之友 电话: 020-33819057
<http://www.lcdfriends.com>

NO.	PIN
1	V0
2	V1
3	V2
4	V3
5	V4
6	C2-
7	C2+
8	C1+
9	C1-
10	C3+
11	VDUT
12	VSS
13	VSS
14	VDD
15	VDD
16	DB7
17	DB6
18	DB5
19	DB4
20	DB3
21	DB2
22	DB1
23	DB0
24	E/RD
25	RW/WR
26	RS
27	RESETB
28	CS1B
29	C68
30	PS

- NOTES:
- DISPLAY TYPE: STN or FSTN
 - VIEWING DIRECTION: 6:00 or 12:00
 - POLARIZER MODE: REFLECTIVE, TRANFLECTIVE, or TRANSMISSIVE
 - DRIVE METHOD: 1/81 DUTY 1/10 BIAS
 - LCD OPERATING VOLTAGE: 9.0V
 - OPERATING TEMP.: NORMAL or WIDE
 - STORAGE TEMP.: NORMAL or WIDE
 - CONTROLLER: S6B0718X01-B0CZ(KS0718UM-L0CC)
 - CONNECTOR: FPC
 - WITHOUT BACKLIGHT
 - UNMARKED TOLERANCES: ±0.3mm



TIAN-MA MICROELECTRONICS CO.
 6/F., CASTIC Building, Shennan Road, Central, Shenzhen, China

DRAWN BY:	TITLE: TM10481A-G	
CHECKED BY:	DWG NO: G-2	
APPROVED BY:	DWG NAME: TM10481A-G2G-2	UNIT: mm
CONFIRMED BY:	SHEET NO: 0F	