

Surface Mount Rectifiers

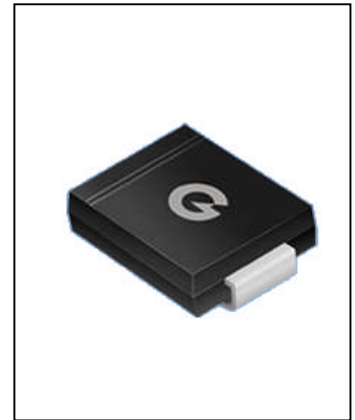
RS5AC--RS5MC

FEATURES

- Low profile package
- For surface mounted applications
- Built-in strain relief, ideal for automated placement
- Plastic package has underwrite rslaborator flammability classification 94V-0
- High temperature soldering: 250°C/10 seconds at terminals



Lead-free



MECHANICAL DATA

- Case: JEDECDO-214AB, molded plastic over passivated chip
- Terminals: Solder plated, solderable per MIL-STD-750, Method 2026
- Polarity: color band denotes cathode end
- Weight: 0.007 ounces, 0.21 gram

Maximum Ratings (@TA = 25°C unless otherwise specified)

Characteristic	Symbol	RS5AC	RS5BC	RS5DC	RS5GC	RS5JC	RS5KC	RS5MC	UNITS	
Maximum recurrent peak reverse voltage	V_{RRM}	50	100	200	400	600	800	1000	V	
Maximum RMS voltage	V_{RMS}	35	70	140	280	420	560	700	V	
Maximum DC blocking voltage	V_{DC}	50	100	200	400	600	800	1000	V	
Maximum average forward rectified current $T_L=90^\circ\text{C}$	$I_{F(AV)}$	5.0								A
Peak forward surge current 8.3ms single half-sine-wave superimposed on rated load	I_{FSM}	150								A

Thermal Characteristics

Characteristic	Symbol	RS5AC	RS5BC	RS5DC	RS5GC	RS5JC	RS5KC	RS5MC	UNITS	
Typical junction capacitance (Note2)	C_J	32								p F
Typical thermal resistance (Note3)	$R_{\theta JA}$	22								°C/W
Operating junction and storage temperature range	$T_J T_{STG}$	-55-----+150								°C

Electrical Characteristics (@TA = 25°C unless otherwise specified)

Characteristic	Symbol	RS5AC	RS5BC	RS5DC	RS5GC	RS5JC	RS5KC	RS5MC	UNITS	
Maximum instantaneous forward voltage at 5.0 A	V_F	1.3								V
Maximum reverse current @ $T_A=25^\circ\text{C}$ at rated DC blocking voltage @ $T_A=125^\circ\text{C}$	I_R	5.0 200								μA
Typical reverse recovery time (Note1)	t_{rr}	150				250		500		ns

 NOTE: 1.Reverse recovery time test conditions: $I_F=0.5\text{A}, I_R=1.0\text{A}, I_{rr}=0.25\text{A}$

2. Measured at 1.0MHz and applied reverse voltage of 4.0 Volts

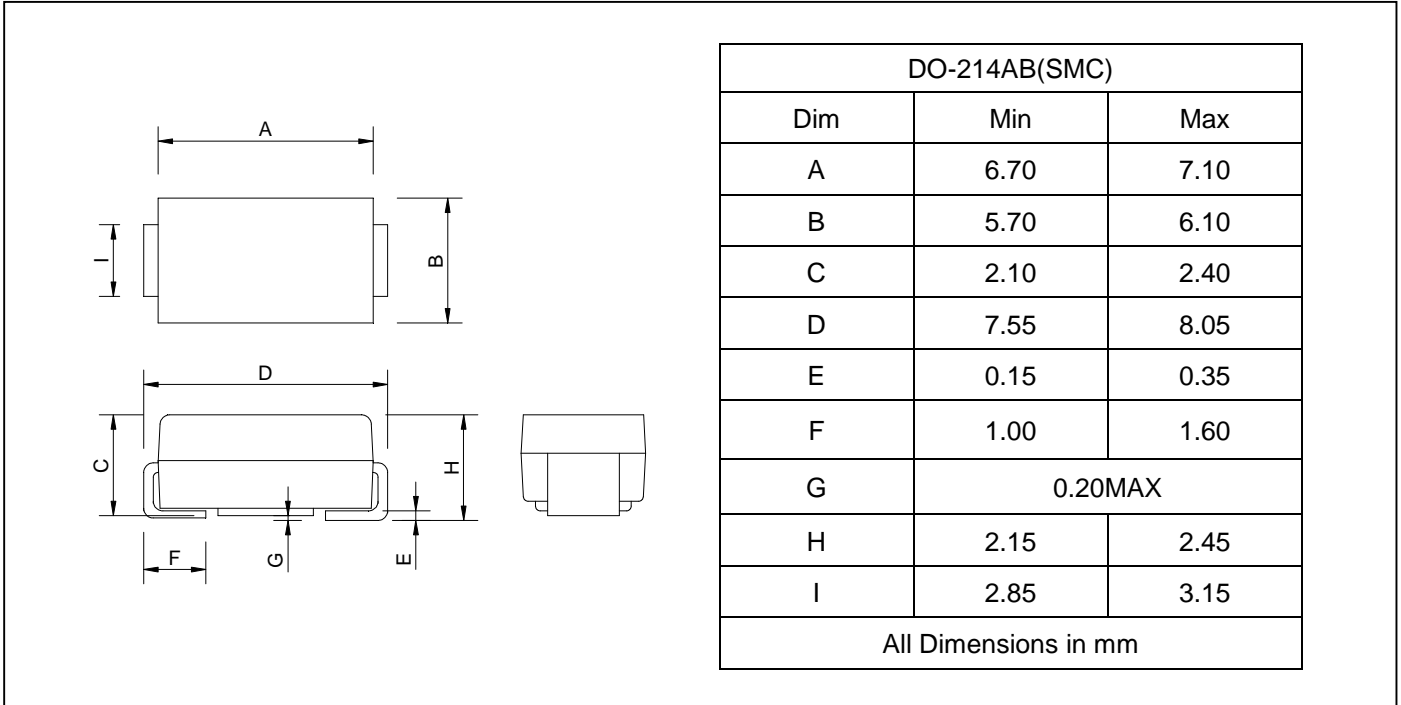
 3. Thermal resistance from junction to ambient and junction to lead P.C.B. mounted on 0.2"X0.2"(5.0X5.0mm²)copper pad areas



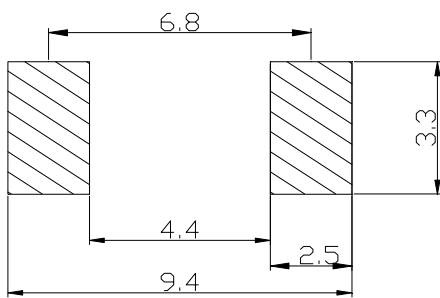
Surface Mount Rectifiers

RS5AC--RS5MC

PACKAGE OUTLINE DIMENSIONS



SOLDERING FOOTPRINT



Unit : mm

PACKAGE INFORMATION

Device	Package	Shipping
RS5AC--RS5MC	DO-214AB(SMC)	3000/Tape&Reel



Surface Mount Rectifiers

RS5AC--RS5MC

FIG.1 -- FORWARD DERATING CURVE

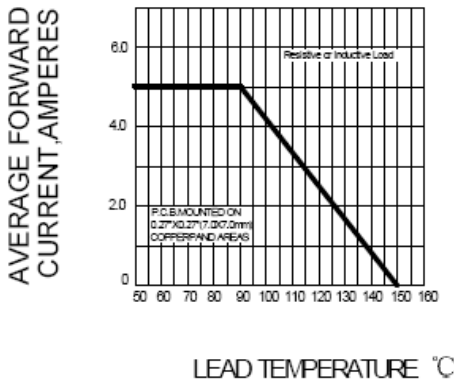


FIG.2 PEAK FORWARD SURGE CURRENT

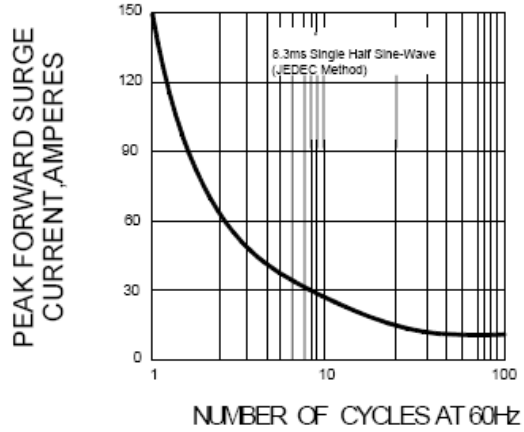


FIG.3 -- TYPICAL FORWARD CHARACTERISTICS

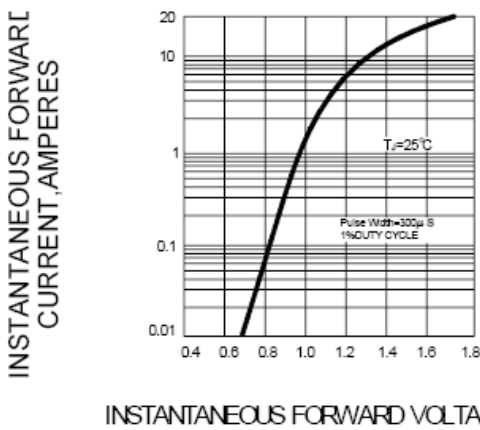


FIG.4 -- TYPICAL REVERSE CHARACTERISTICS

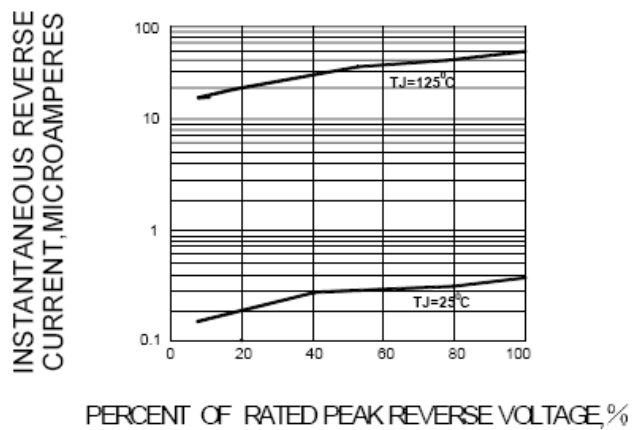


FIG.5-TYPICAL JUNCTION CAPACITANCE

