

**SURFACE MOUNT SCHOTTKY
BARRIER RECTIFIERS**
SS32B--SS310B
FEATURES

- Schottky barrier rectifier
- Guarding protection
- Low forward voltage
- Reverse energy tested
- High current capability
- Extremely low thermal resistance


MECHANICAL DATA

- Case: SMB molded plastic body
- Polarity: Color band denotes cathode end
- Mounting position: ANY

Maximum Ratings (@TA = 25°C unless otherwise specified)

Characteristic	Symbol	SS32B	SS33B	SS34B	SS345B	SS35B	SS36B	SS38B	SS39B	SS310B	UNITS
Maximum repetitive peak reverse voltage	V_{RRM}	20	30	40	45	50	60	80	90	100	V
Maximum RMS voltage	V_{RWS}	14	21	28	31.5	35	42	56	63	70	V
Maximum DC blocking voltage	V_{DC}	20	30	40	45	50	60	80	90	100	V
Maximum average forward rectified current at $T_L=90^\circ\text{C}$	$I_{F(AV)}$	3.0									A
Peak forward surge current 8.3ms single half-sine-wave	I_{FSM}	100									A

Thermal Characteristics

Characteristic	Symbol	SS32B	SS33B	SS34B	SS345B	SS35B	SS36B	SS38B	SS39B	SS310B	UNITS
Maximum thermal resistance	$R_{\theta JL}$	17.0									°C/W
Operating temperature range	T_J	-55----+125						-55----+150			°C
Storage temperature range	T_{STG}	-55----+150									°C

Electrical Characteristics (@TA = 25°C unless otherwise specified)

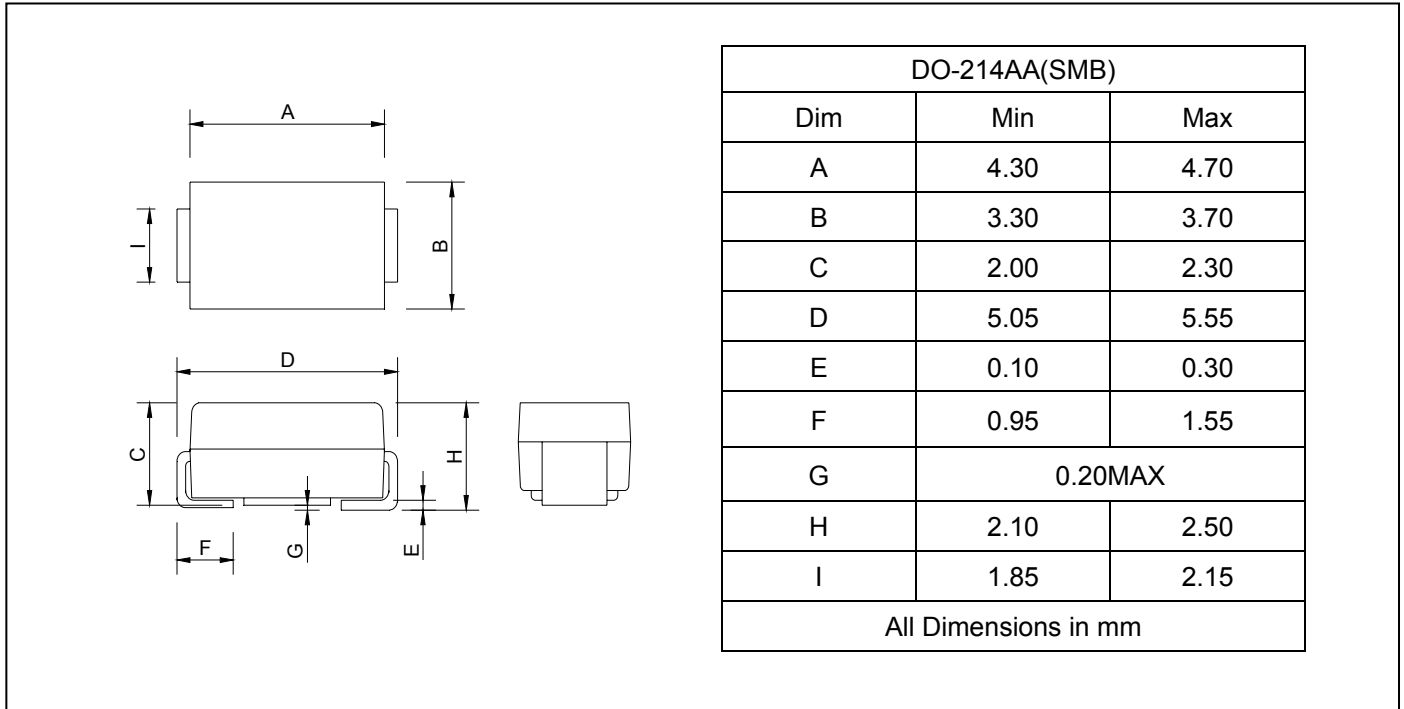
Characteristic	Symbol	SS32B	SS33B	SS34B	SS345B	SS35B	SS36B	SS38B	SS39B	SS310B	UNITS
Maximum instantaneous forward voltage at $I_{FM}=3.0\text{A}$	V_F	0.50				0.75		0.85			V
Maximum DC reverse current $T_J=25^\circ\text{C}$ at rated DC blocking voltage $T_J=125^\circ\text{C}$	I_R	0.5									mA
		20				10		5.0			



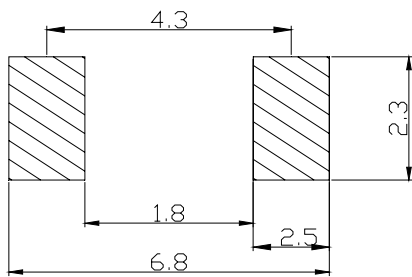
**SURFACE MOUNT SCHOTTKY
BARRIER RECTIFIERS**

SS32B--SS310B

PACKAGE OUTLINE DIMENSIONS



SOLDERING FOOTPRINT



Unit : mm

PACKAGE INFORMATION

Device	Package	Shipping
SS32B--SS310B	DO-214AA(SMB)	3000/Tape&Reel



**SURFACE MOUNT SCHOTTKY
BARRIER RECTIFIERS**

SS32B--SS310B

FIG.1 – FORWARD DERATING CURVE

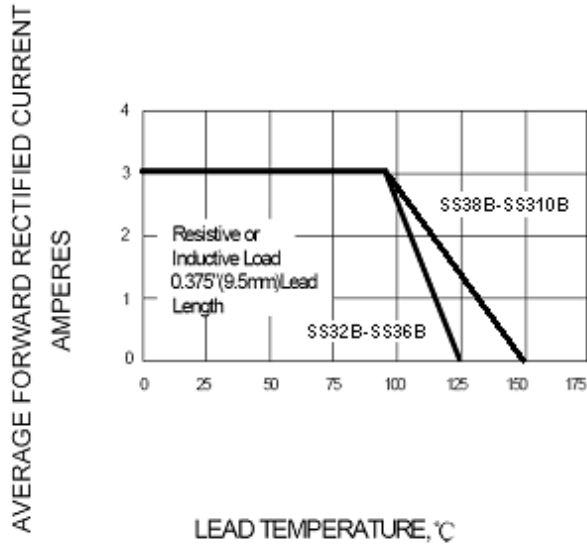


FIG.2 – PEAK FORWARD SURGE CURRENT

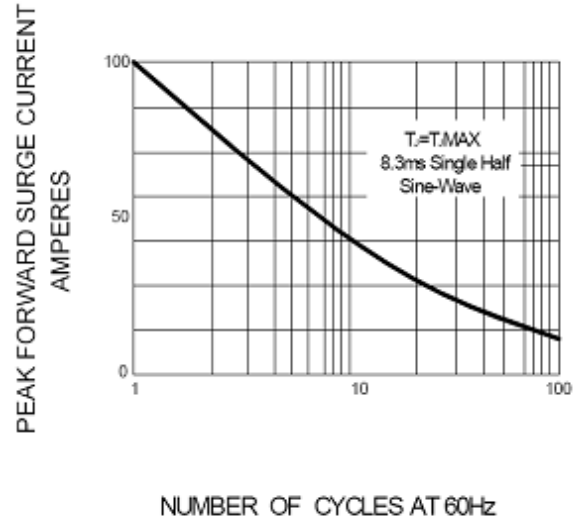


FIG.3 – TYPICAL INSTANTANEOUS FORWARD CHARACTERISTICS

