



TVS 瞬態電壓抑制二極管
Voltage : 5V0 - 170V

1.5SMCJ5.0 - 1.5SMCJ170CA

1500W Surface Mount Transient Voltage Suppressor

□ Feature

- ◆ Fast Response Time
- ◆ 5.0V-170V Stand-off Voltage
- ◆ Excellent Clamping Capability
- ◆ Glass Passivated Die Construction
- ◆ 1500W Peak Pulse Power Dissipation
- ◆ Uni-and Bi-Directional Versions Available
- ◆ Plastic Case Material has UL Flammability Classification Rating 94V-0

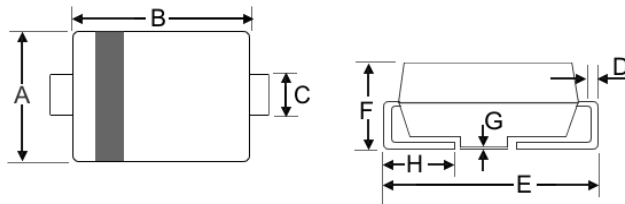
□ Mechanical Data

- ◆ Weight: 0.21 grams (approx)
- ◆ Marking: Device Marking Code
- ◆ Case: SMC/DO-214AB, Molded Plastic
- ◆ Polarity: Cathode Band Except Bi-Directional
- ◆ Terminals: Solder Plated, Solderable per MIL-STD-750, Method 2026.
- ◆ Lead Free: For **RoHS** / Lead Free Version Add "-LF" Suffix to part Number.

□ Dimension

Case: SMC/DO-214AB (mm)

| Dim | Min | Max |
|-----|-------|-------|
| A | 5.59 | 6.22 |
| B | 6.6 | 7.11 |
| C | 2.75 | 3.25 |
| D | 0.152 | 0.305 |
| E | 7.75 | 8.13 |
| F | 2.0 | 2.62 |
| G | 0.051 | 0.203 |
| H | 0.76 | 1.27 |



"C" : Suffix designates Bi-directional Devices
 "A" : Suffix designates ±5% Tolerance Devices
 "No" : Suffix designates ±10% Tolerance Devices

Figure Case SMC/DO-214AB



□ Maximum Ratings and Electrical Characteristics @T_A=25°C unless otherwise specified

| CHARACTERISTIC | Symbol | Value | Unit |
|--|------------------------------------|-----------|------|
| Peak Pulse Power Dissipation 10/1000µS Waveform (note 1,2) Figure 3. | P _{PPM} | 1500 Min. | W |
| Peak pulse current on 10/1000µS Waveform (note 1) Figure 4. | I _{PPM} | Table 1 | A |
| Steady state power dissipation (Note 4.) | P _{M(AV)} | 6.5 | W |
| Peak forward surge current 8.3ms single half sine-wave superimposed on ratedload (JEDEC Mathod) (Note2,3.) | I _{FSM} | 200 | A |
| Typical Thermal Resistance | R _{θJL} | 15 | °C/W |
| | R _{θJA} | 90 | |
| Operating and Storage Temperature Range | T _J , T _{STG.} | -65~+150 | °C |

- Note:
1. Non-repetitive current pulse per Figure 4 and derated above T_A =25°C per Figure 1.
 2. Mounted on 8.0mm² copper pad to each terminal
 3. Measured on 8.3ms single half sine-wave or equivalent square wave, duty cycle = 4 pulses per minutes maximum.
 4. Lead temperature at 75°C
 5. Peak pulse power waveform is 10/1000µS.
 6. Mounted on minimum recommended pad layout.



SINLOON®

TVS 瞬態電壓抑制二極管

1.5SMCJ5.0 - 1.5SMCJ170CA

Voltage : 5V0 - 170V

1500W Surface Mount Transient Voltage Suppressor

Uni-Direction 1500 Watt Surface Mount TVS (Table 1)

| Uni-Directional | Device Marking | Reverse Stand-off Voltage | Breakdown Voltage $V_{BR}(V)$ | | Test Current I_T | Max. Clamping Voltage | Peak Pulse Current | Reverse Leakage @ V_{RWM} |
|-----------------|----------------|---------------------------|-------------------------------|--------------|--------------------|-----------------------|--------------------|-----------------------------|
| Part No. | Code | $V_{RWM}(V)$ | Min. @ I_T | Max. @ I_T | (mA) | $I_{pp} V_c(V)$ | $I_{pp}(A)$ | IR (μA) |
| 1.5SMCJ5.0 | GDD | 5.0 | 6.40 | 7.30 | 10.0 | 9.6 | 156.20 | 1000.0 |
| 1.5SMCJ5.0A | GDE | 5.0 | 6.40 | 7.00 | 10.0 | 9.2 | 163.00 | 1000.0 |
| 1.5SMCJ6.0 | GDF | 6.0 | 6.67 | 8.15 | 10.0 | 11.4 | 131.60 | 1000.0 |
| 1.5SMCJ6.0A | GDG | 6.0 | 6.67 | 7.37 | 10.0 | 10.3 | 145.60 | 1000.0 |
| 1.5SMCJ6.5 | GDH | 6.5 | 7.55 | 8.82 | 10.0 | 12.3 | 122.00 | 500.0 |
| 1.5SMCJ6.5A | GDK | 6.5 | 7.55 | 7.98 | 10.0 | 11.2 | 133.90 | 500.0 |
| 1.5SMCJ7.0 | GDL | 7.0 | 7.78 | 9.51 | 10.0 | 13.3 | 112.80 | 200.0 |
| 1.5SMCJ7.0A | GDM | 7.0 | 7.78 | 8.60 | 10.0 | 12.0 | 125.00 | 200.0 |
| 1.5SMCJ7.5 | GDN | 7.5 | 8.33 | 10.20 | 1.0 | 14.3 | 104.90 | 100.0 |
| 1.5SMCJ7.5A | GDP | 7.5 | 8.33 | 9.21 | 1.0 | 12.9 | 116.30 | 100.0 |
| 1.5SMCJ8.0 | GDQ | 8.0 | 8.89 | 10.90 | 1.0 | 15.0 | 100.00 | 50.0 |
| 1.5SMCJ8.0A | GDR | 8.0 | 8.89 | 9.83 | 1.0 | 13.6 | 110.3 | 50.0 |
| 1.5SMCJ8.5 | GDS | 8.5 | 9.44 | 11.50 | 1.0 | 15.9 | 94.3 | 25.0 |
| 1.5SMCJ8.5A | GDT | 8.5 | 9.44 | 10.40 | 1.0 | 14.4 | 104.2 | 25.0 |
| 1.5SMCJ9.0 | GDU | 9.0 | 10.0 | 12.20 | 1.0 | 16.9 | 88.7 | 10.0 |
| 1.5SMCJ9.0A | GDV | 9.0 | 10.0 | 11.10 | 1.0 | 15.4 | 97.4 | 10.0 |
| 1.5SMCJ10 | GDW | 10.0 | 11.1 | 13.60 | 1.0 | 18.8 | 79.8 | 5.0 |
| 1.5SMCJ10A | GDZ | 10.0 | 11.1 | 12.30 | 1.0 | 17.0 | 88.2 | 5.0 |
| 1.5SMCJ11 | GDY | 11.0 | 12.2 | 14.90 | 1.0 | 20.1 | 74.6 | 5.0 |
| 1.5SMCJ11A | GDZ | 11.0 | 12.2 | 13.50 | 1.0 | 18.2 | 82.4 | 5.0 |
| 1.5SMCJ12 | GED | 12.0 | 13.3 | 16.30 | 1.0 | 22.0 | 68.2 | 5.0 |
| 1.5SMCJ12A | GEE | 12.0 | 13.3 | 14.70 | 1.0 | 19.9 | 75.3 | 5.0 |
| 1.5SMCJ13 | GEF | 13.0 | 14.4 | 17.60 | 1.0 | 23.8 | 63.0 | 1.0 |
| 1.5SMCJ13A | GEG | 13.0 | 14.4 | 15.90 | 1.0 | 21.5 | 69.7 | 1.0 |
| 1.5SMCJ14 | GEH | 14.0 | 15.6 | 19.10 | 1.0 | 25.8 | 58.1 | 1.0 |
| 1.5SMCJ14A | GEK | 14.0 | 15.6 | 17.20 | 1.0 | 23.2 | 64.7 | 1.0 |
| 1.5SMCJ15 | GEL | 15.0 | 16.7 | 20.40 | 1.0 | 26.9 | 55.8 | 1.0 |
| 1.5SMCJ15A | GEM | 15.0 | 16.7 | 18.50 | 1.0 | 24.4 | 61.5 | 1.0 |
| 1.5SMCJ16 | GEN | 16.0 | 17.8 | 21.80 | 1.0 | 28.8 | 52.1 | 1.0 |
| 1.5SMCJ16A | GEP | 16.0 | 17.8 | 19.70 | 1.0 | 26.0 | 57.7 | 1.0 |
| 1.5SMCJ17 | GEQ | 17.0 | 18.9 | 23.10 | 1.0 | 30.5 | 49.2 | 1.0 |
| 1.5SMCJ17A | GER | 17.0 | 18.9 | 20.90 | 1.0 | 27.6 | 53.3 | 1.0 |
| 1.5SMCJ18 | GES | 18.0 | 20.0 | 24.40 | 1.0 | 32.2 | 46.6 | 1.0 |
| 1.5SMCJ18A | GET | 18.0 | 20.0 | 22.10 | 1.0 | 29.2 | 51.4 | 1.0 |
| 1.5SMCJ20 | GEU | 20.0 | 22.2 | 27.10 | 1.0 | 35.8 | 41.9 | 1.0 |
| 1.5SMCJ20A | GEV | 20.0 | 22.2 | 24.50 | 1.0 | 32.4 | 46.3 | 1.0 |
| 1.5SMCJ22 | GEW | 22.0 | 24.4 | 29.80 | 1.0 | 39.4 | 38.1 | 1.0 |
| 1.5SMCJ22A | GEX | 22.0 | 24.4 | 26.90 | 1.0 | 35.5 | 52.2 | 1.0 |
| 1.5SMCJ24 | GEY | 24.0 | 26.7 | 32.60 | 1.0 | 43.0 | 34.9 | 1.0 |
| 1.5SMCJ24A | GEZ | 24.0 | 26.7 | 29.50 | 1.0 | 38.9 | 38.6 | 1.0 |
| 1.5SMCJ26 | GFD | 26.0 | 28.9 | 36.30 | 1.0 | 46.6 | 32.2 | 1.0 |
| 1.5SMCJ26A | GFE | 26.0 | 28.9 | 31.90 | 1.0 | 42.1 | 35.6 | 1.0 |
| 1.5SMCJ28 | GFF | 28.0 | 31.1 | 38.00 | 1.0 | 50.0 | 30.0 | 1.0 |
| 1.5SMCJ28A | GFG | 28.0 | 31.1 | 34.40 | 1.0 | 45.4 | 33.0 | 1.0 |
| 1.5SMCJ30 | GFH | 30.0 | 33.3 | 40.70 | 1.0 | 53.5 | 28.0 | 1.0 |
| 1.5SMCJ30A | GFK | 30.0 | 33.3 | 36.80 | 1.0 | 48.4 | 31.0 | 1.0 |
| 1.5SMCJ33 | GFL | 33.0 | 36.7 | 44.90 | 1.0 | 59.0 | 25.2 | 1.0 |
| 1.5SMCJ33A | GFM | 33.0 | 36.7 | 40.60 | 1.0 | 53.3 | 28.1 | 1.0 |
| 1.5SMCJ36 | GFN | 36.0 | 40.0 | 48.90 | 1.0 | 64.3 | 23.3 | 1.0 |
| 1.5SMCJ36A | GFP | 36.0 | 40.0 | 44.20 | 1.0 | 58.1 | 25.8 | 1.0 |
| 1.5SMCJ40 | GFQ | 40.0 | 44.4 | 54.30 | 1.0 | 71.4 | 21.0 | 1.0 |
| 1.5SMCJ40A | GFR | 40.0 | 44.4 | 49.10 | 1.0 | 64.5 | 23.2 | 1.0 |
| 1.5SMCJ43 | GFX | 43.0 | 47.8 | 58.40 | 1.0 | 76.7 | 19.6 | 1.0 |
| 1.5SMCJ43A | GFT | 43.0 | 47.8 | 52.80 | 1.0 | 69.4 | 21.6 | 1.0 |
| 1.5SMCJ45 | GFV | 45.0 | 50.0 | 61.10 | 1.0 | 80.3 | 18.7 | 1.0 |
| 1.5SMCJ45A | GFV | 45.0 | 50.0 | 55.30 | 1.0 | 72.7 | 20.6 | 1.0 |
| 1.5SMCJ48 | GFW | 48.0 | 53.3 | 65.10 | 1.0 | 85.5 | 17.5 | 1.0 |
| 1.5SMCJ48A | GFX | 48.0 | 53.3 | 58.90 | 1.0 | 77.4 | 19.4 | 1.0 |
| 1.5SMCJ51 | GFY | 50.0 | 56.7 | 69.30 | 1.0 | 91.1 | 18.5 | 1.0 |
| 1.5SMCJ51A | GFZ | 51.0 | 56.7 | 62.70 | 1.0 | 82.4 | 18.2 | 1.0 |
| 1.5SMCJ54 | GGD | 54.0 | 60.0 | 73.30 | 1.0 | 96.3 | 15.6 | 1.0 |
| 1.5SMCJ54A | GGE | 54.0 | 60.0 | 66.30 | 1.0 | 87.1 | 17.2 | 1.0 |
| 1.5SMCJ58 | GGF | 58.0 | 64.4 | 78.70 | 1.0 | 103.0 | 14.6 | 1.0 |
| 1.5SMCJ58A | GGG | 58.0 | 64.4 | 71.20 | 1.0 | 93.6 | 16.0 | 1.0 |
| 1.5SMCJ60 | GGH | 60.0 | 66.7 | 81.50 | 1.0 | 107.0 | 14.0 | 1.0 |
| 1.5SMCJ60A | GGK | 60.0 | 66.7 | 73.70 | 1.0 | 96.8 | 15.5 | 1.0 |
| 1.5SMCJ64 | GGL | 64.0 | 71.1 | 86.90 | 1.0 | 114.0 | 13.2 | 1.0 |
| 1.5SMCJ64A | GGM | 64.0 | 71.1 | 78.60 | 1.0 | 103.0 | 14.6 | 1.0 |
| 1.5SMCJ70 | GGN | 70.0 | 77.8 | 95.10 | 1.0 | 125.0 | 12.0 | 1.0 |
| 1.5SMCJ70A | GGP | 70.0 | 77.8 | 86.10 | 1.0 | 113.0 | 13.3 | 1.0 |
| 1.5SMCJ75 | GGQ | 75.0 | 83.3 | 102.00 | 1.0 | 134.0 | 11.2 | 1.0 |
| 1.5SMCJ75A | GGR | 75.0 | 83.3 | 92.10 | 1.0 | 121.0 | 12.4 | 1.0 |
| 1.5SMCJ78 | GGX | 78.0 | 86.7 | 106.00 | 1.0 | 139.0 | 10.8 | 1.0 |
| 1.5SMCJ78A | GGT | 78.0 | 86.7 | 95.80 | 1.0 | 126.0 | 11.4 | 1.0 |
| 1.5SMCJ85 | GGU | 85.0 | 94.4 | 115.00 | 1.0 | 151.0 | 9.9 | 1.0 |
| 1.5SMCJ85A | GGV | 85.0 | 94.4 | 104.00 | 1.0 | 137.0 | 10.4 | 1.0 |
| 1.5SMCJ90 | GGW | 90.0 | 100 | 122.00 | 1.0 | 160.0 | 9.4 | 1.0 |
| 1.5SMCJ90A | GGX | 90.0 | 100 | 111.00 | 1.0 | 146.0 | 10.3 | 1.0 |
| 1.5SMCJ100 | GGY | 100.0 | 111 | 136.00 | 1.0 | 179.0 | 8.4 | 1.0 |
| 1.5SMCJ100A | GGZ | 100.0 | 111 | 123.00 | 1.0 | 162.0 | 9.3 | 1.0 |
| 1.5SMCJ110 | GHD | 110.0 | 122 | 149.00 | 1.0 | 196.0 | 7.7 | 1.0 |
| 1.5SMCJ110A | GHE | 110.0 | 122 | 135.00 | 1.0 | 177.0 | 8.4 | 1.0 |
| 1.5SMCJ120 | GHF | 120.0 | 133 | 163.00 | 1.0 | 214.0 | 7.0 | 1.0 |
| 1.5SMCJ120A | GHG | 120.0 | 133 | 147.00 | 1.0 | 193.0 | 7.9 | 1.0 |
| 1.5SMCJ130 | GHH | 130.0 | 144 | 176.00 | 1.0 | 231.0 | 6.5 | 1.0 |
| 1.5SMCJ130A | GHK | 130.0 | 144 | 159.00 | 1.0 | 209.0 | 7.2 | 1.0 |
| 1.5SMCJ150 | GHL | 150.0 | 167 | 204.00 | 1.0 | 268.0 | 5.6 | 1.0 |
| 1.5SMCJ150A | GHM | 150.0 | 167 | 185.00 | 1.0 | 243.0 | 6.2 | 1.0 |
| 1.5SMCJ160 | GHN | 160.0 | 178 | 218.00 | 1.0 | 287.0 | 5.2 | 1.0 |
| 1.5SMCJ160A | GHP | 160.0 | 178 | 197.00 | 1.0 | 259.0 | 5.8 | 1.0 |
| 1.5SMCJ170 | GHQ | 170.0 | 189 | 231.00 | 1.0 | 304.0 | 4.9 | 1.0 |
| 1.5SMCJ170A | GHR | 170.0 | 189 | 209.00 | 1.0 | 275.0 | 5.5 | 1.0 |



SINLOON®

TVS 瞬態電壓抑制二極管
Voltage : 5V0 - 170V

1.5SMCJ5.0 - 1.5SMCJ170CA
1500W Surface Mount Transient Voltage Suppressor

□ Uni-Direction 1500 Watt Surface Mount TVS (Table 1)

| Uni-Directional | Device Marking | Reverse Stand-off Voltage $V_{RWM}(V)$ | Breakdown Voltage $V_{BR}(V)$ | | Test Current I_T (mA) | Max. Clamping Voltage $I_{pp} V_c(V)$ | Peak Pulse Current $I_{pp}(A)$ | Reverse Leakage @ V_{RWM} (μA) |
|-----------------|----------------|--|-------------------------------|--------------|-------------------------|---------------------------------------|--------------------------------|----------------------------------|
| | | | Min. @ I_T | Max. @ I_T | | | | |
| Part No. | Code | $V_{RWM}(V)$ | Min. @ I_T | Max. @ I_T | (mA) | $I_{pp} V_c(V)$ | $I_{pp}(A)$ | IR (μA) |
| 1.5SMCJ5.0C | BDD | 5.0 | 6.40 | 7.30 | 10.0 | 9.6 | 156.20 | 2000.0 |
| 1.5SMCJ5.0CA | BDE | 5.0 | 6.40 | 7.00 | 10.0 | 9.2 | 163.00 | 2000.0 |
| 1.5SMCJ6.0C | GDF | 6.0 | 6.67 | 8.15 | 10.0 | 11.4 | 131.60 | 2000.0 |
| 1.5SMCJ6.0CA | BDG | 6.0 | 6.67 | 7.37 | 10.0 | 10.3 | 145.60 | 2000.0 |
| 1.5SMCJ6.5C | BDH | 6.5 | 7.55 | 8.82 | 10.0 | 12.3 | 122.00 | 1000.0 |
| 1.5SMCJ6.5CA | BDK | 6.5 | 7.55 | 7.98 | 10.0 | 11.2 | 133.90 | 1000.0 |
| 1.5SMCJ7.0C | BDL | 7.0 | 7.78 | 9.51 | 10.0 | 13.3 | 112.80 | 400.0 |
| 1.5SMCJ7.0CA | BDM | 7.0 | 7.78 | 8.60 | 10.0 | 12.0 | 125.00 | 400.0 |
| 1.5SMCJ7.5C | BDN | 7.5 | 8.33 | 10.20 | 1.0 | 14.3 | 104.90 | 200.0 |
| 1.5SMCJ7.5CA | BDP | 7.5 | 8.33 | 9.21 | 1.0 | 12.9 | 116.30 | 200.0 |
| 1.5SMCJ8.0C | BDQ | 8.0 | 8.89 | 10.90 | 1.0 | 15.0 | 100.00 | 100.0 |
| 1.5SMCJ8.0CA | BDR | 8.0 | 8.89 | 9.83 | 1.0 | 13.6 | 110.3 | 100.0 |
| 1.5SMCJ8.5C | BDS | 8.5 | 9.44 | 11.50 | 1.0 | 15.9 | 94.3 | 50.0 |
| 1.5SMCJ8.5CA | BDT | 8.5 | 9.44 | 10.40 | 1.0 | 14.4 | 104.2 | 50.0 |
| 1.5SMCJ9.0C | BDU | 9.0 | 10.0 | 12.20 | 1.0 | 16.9 | 88.7 | 20.0 |
| 1.5SMCJ9.0CA | BDV | 9.0 | 10.0 | 11.10 | 1.0 | 15.4 | 97.4 | 20.0 |
| 1.5SMCJ10C | BDW | 10.0 | 11.1 | 13.60 | 1.0 | 18.8 | 79.8 | 5.0 |
| 1.5SMCJ10CA | BDZ | 10.0 | 11.1 | 12.30 | 1.0 | 17.0 | 88.2 | 5.0 |
| 1.5SMCJ11C | BDY | 11.0 | 12.2 | 14.90 | 1.0 | 20.1 | 74.6 | 5.0 |
| 1.5SMCJ11CA | BDZ | 11.0 | 12.2 | 13.50 | 1.0 | 18.2 | 82.4 | 5.0 |
| 1.5SMCJ12C | BED | 12.0 | 13.3 | 16.30 | 1.0 | 22.0 | 68.2 | 5.0 |
| 1.5SMCJ12CA | BEE | 12.0 | 13.3 | 14.70 | 1.0 | 19.9 | 75.3 | 5.0 |
| 1.5SMCJ13C | BEF | 13.0 | 14.4 | 17.60 | 1.0 | 23.8 | 63.0 | 1.0 |
| 1.5SMCJ13CA | BEG | 13.0 | 14.4 | 15.90 | 1.0 | 21.5 | 69.7 | 1.0 |
| 1.5SMCJ14C | BEH | 14.0 | 15.6 | 19.10 | 1.0 | 25.8 | 58.1 | 1.0 |
| 1.5SMCJ14CA | BEK | 14.0 | 15.6 | 17.20 | 1.0 | 23.2 | 64.7 | 1.0 |
| 1.5SMCJ15C | BEL | 15.0 | 16.7 | 20.40 | 1.0 | 26.9 | 55.8 | 1.0 |
| 1.5SMCJ15CA | BEM | 15.0 | 16.7 | 18.50 | 1.0 | 24.4 | 61.5 | 1.0 |
| 1.5SMCJ16C | BEN | 16.0 | 17.8 | 21.80 | 1.0 | 28.8 | 52.1 | 1.0 |
| 1.5SMCJ16CA | BEP | 16.0 | 17.8 | 19.70 | 1.0 | 26.0 | 57.7 | 1.0 |
| 1.5SMCJ17C | BEQ | 17.0 | 18.9 | 23.10 | 1.0 | 30.5 | 49.2 | 1.0 |
| 1.5SMCJ17CA | BER | 17.0 | 18.9 | 20.90 | 1.0 | 27.6 | 53.3 | 1.0 |
| 1.5SMCJ18C | BES | 18.0 | 20.0 | 24.40 | 1.0 | 32.2 | 46.6 | 1.0 |
| 1.5SMCJ18CA | BET | 18.0 | 20.0 | 22.10 | 1.0 | 29.2 | 51.4 | 1.0 |
| 1.5SMCJ20C | BEU | 20.0 | 22.2 | 27.10 | 1.0 | 35.8 | 41.9 | 1.0 |
| 1.5SMCJ20CA | BEV | 20.0 | 22.2 | 24.50 | 1.0 | 32.4 | 46.3 | 1.0 |
| 1.5SMCJ22C | BEW | 22.0 | 24.4 | 29.80 | 1.0 | 39.4 | 38.1 | 1.0 |
| 1.5SMCJ22CA | BEX | 22.0 | 24.4 | 26.90 | 1.0 | 35.5 | 52.2 | 1.0 |
| 1.5SMCJ24C | BEY | 24.0 | 26.7 | 32.60 | 1.0 | 43.0 | 34.9 | 1.0 |
| 1.5SMCJ24CA | BEZ | 24.0 | 26.7 | 29.50 | 1.0 | 38.9 | 38.6 | 1.0 |
| 1.5SMCJ26C | BFD | 26.0 | 28.9 | 36.30 | 1.0 | 46.6 | 32.2 | 1.0 |
| 1.5SMCJ26CA | BFE | 26.0 | 28.9 | 31.90 | 1.0 | 42.1 | 35.6 | 1.0 |
| 1.5SMCJ28C | BFF | 28.0 | 31.1 | 38.00 | 1.0 | 50.0 | 30.0 | 1.0 |
| 1.5SMCJ28CA | BFG | 28.0 | 31.1 | 34.40 | 1.0 | 45.4 | 33.0 | 1.0 |
| 1.5SMCJ30C | BFH | 30.0 | 33.3 | 40.70 | 1.0 | 53.5 | 28.0 | 1.0 |
| 1.5SMCJ30CA | BFK | 30.0 | 33.3 | 36.80 | 1.0 | 48.4 | 31.0 | 1.0 |
| 1.5SMCJ33C | BFL | 33.0 | 36.7 | 44.90 | 1.0 | 59.0 | 25.2 | 1.0 |
| 1.5SMCJ33CA | BFM | 33.0 | 36.7 | 40.60 | 1.0 | 53.3 | 28.1 | 1.0 |
| 1.5SMCJ36C | BFN | 36.0 | 40.0 | 48.90 | 1.0 | 64.3 | 23.3 | 1.0 |
| 1.5SMCJ36CA | BFP | 36.0 | 40.0 | 44.20 | 1.0 | 58.1 | 25.8 | 1.0 |
| 1.5SMCJ40C | BFQ | 40.0 | 44.4 | 54.30 | 1.0 | 71.4 | 21.0 | 1.0 |
| 1.5SMCJ40CA | BFR | 40.0 | 44.4 | 49.10 | 1.0 | 64.5 | 23.2 | 1.0 |
| 1.5SMCJ43C | BFX | 43.0 | 47.8 | 58.40 | 1.0 | 76.7 | 19.6 | 1.0 |
| 1.5SMCJ43CA | BFT | 43.0 | 47.8 | 52.80 | 1.0 | 69.4 | 21.6 | 1.0 |
| 1.5SMCJ45C | BFV | 45.0 | 50.0 | 61.10 | 1.0 | 80.3 | 18.7 | 1.0 |
| 1.5SMCJ45CA | BFV | 45.0 | 50.0 | 55.30 | 1.0 | 72.7 | 20.6 | 1.0 |
| 1.5SMCJ48C | BFW | 48.0 | 53.3 | 65.10 | 1.0 | 85.5 | 17.5 | 1.0 |
| 1.5SMCJ48CA | BFX | 48.0 | 53.3 | 58.90 | 1.0 | 77.4 | 19.4 | 1.0 |
| 1.5SMCJ51C | BFY | 50.0 | 56.7 | 69.30 | 1.0 | 91.1 | 18.5 | 1.0 |
| 1.5SMCJ51CA | BFZ | 51.0 | 56.7 | 62.70 | 1.0 | 82.4 | 18.2 | 1.0 |
| 1.5SMCJ54C | BGD | 54.0 | 60.0 | 73.30 | 1.0 | 96.3 | 15.6 | 1.0 |
| 1.5SMCJ54CA | BGE | 54.0 | 60.0 | 66.30 | 1.0 | 87.1 | 17.2 | 1.0 |
| 1.5SMCJ58C | BGF | 58.0 | 64.4 | 78.70 | 1.0 | 103.0 | 14.6 | 1.0 |
| 1.5SMCJ58CA | BGG | 58.0 | 64.4 | 71.20 | 1.0 | 93.6 | 16.0 | 1.0 |
| 1.5SMCJ60C | BGH | 60.0 | 66.7 | 81.50 | 1.0 | 107.0 | 14.0 | 1.0 |
| 1.5SMCJ60CA | BGK | 60.0 | 66.7 | 73.70 | 1.0 | 96.8 | 15.5 | 1.0 |
| 1.5SMCJ64C | BGL | 64.0 | 71.1 | 86.90 | 1.0 | 114.0 | 13.2 | 1.0 |
| 1.5SMCJ64CA | BGM | 64.0 | 71.1 | 78.60 | 1.0 | 103.0 | 14.6 | 1.0 |
| 1.5SMCJ70C | BGN | 70.0 | 77.8 | 95.10 | 1.0 | 125.0 | 12.0 | 1.0 |
| 1.5SMCJ70CA | BGP | 70.0 | 77.8 | 86.10 | 1.0 | 113.0 | 13.3 | 1.0 |
| 1.5SMCJ75C | BGQ | 75.0 | 83.3 | 102.00 | 1.0 | 134.0 | 11.2 | 1.0 |
| 1.5SMCJ75CA | BGR | 75.0 | 83.3 | 92.10 | 1.0 | 121.0 | 12.4 | 1.0 |
| 1.5SMCJ78C | BGX | 78.0 | 86.7 | 106.00 | 1.0 | 139.0 | 10.8 | 1.0 |
| 1.5SMCJ78CA | BGT | 78.0 | 86.7 | 95.80 | 1.0 | 126.0 | 11.4 | 1.0 |
| 1.5SMCJ85C | BGU | 85.0 | 94.4 | 115.00 | 1.0 | 151.0 | 9.9 | 1.0 |
| 1.5SMCJ85CA | BGV | 85.0 | 94.4 | 104.00 | 1.0 | 137.0 | 10.4 | 1.0 |
| 1.5SMCJ90C | BGW | 90.0 | 100 | 122.00 | 1.0 | 160.0 | 9.4 | 1.0 |
| 1.5SMCJ90CA | BGX | 90.0 | 100 | 111.00 | 1.0 | 146.0 | 10.3 | 1.0 |
| 1.5SMCJ100C | BGY | 100.0 | 111 | 136.00 | 1.0 | 179.0 | 8.4 | 1.0 |
| 1.5SMCJ100CA | BGZ | 100.0 | 111 | 123.00 | 1.0 | 162.0 | 9.3 | 1.0 |
| 1.5SMCJ110C | BHD | 110.0 | 122 | 149.00 | 1.0 | 196.0 | 7.7 | 1.0 |
| 1.5SMCJ110CA | BHE | 110.0 | 122 | 135.00 | 1.0 | 177.0 | 8.4 | 1.0 |
| 1.5SMCJ120C | BHF | 120.0 | 133 | 163.00 | 1.0 | 214.0 | 7.0 | 1.0 |
| 1.5SMCJ120CA | BHG | 120.0 | 133 | 147.00 | 1.0 | 193.0 | 7.9 | 1.0 |
| 1.5SMCJ130C | BHH | 130.0 | 144 | 176.00 | 1.0 | 231.0 | 6.5 | 1.0 |
| 1.5SMCJ130CA | BHK | 130.0 | 144 | 159.00 | 1.0 | 209.0 | 7.2 | 1.0 |
| 1.5SMCJ150C | BHL | 150.0 | 167 | 204.00 | 1.0 | 268.0 | 5.6 | 1.0 |
| 1.5SMCJ150CA | BHM | 150.0 | 167 | 185.00 | 1.0 | 243.0 | 6.2 | 1.0 |
| 1.5SMCJ160C | BHN | 160.0 | 178 | 218.00 | 1.0 | 287.0 | 5.2 | 1.0 |
| 1.5SMCJ160CA | BHP | 160.0 | 178 | 197.00 | 1.0 | 259.0 | 5.8 | 1.0 |
| 1.5SMCJ170C | BHQ | 170.0 | 189 | 231.00 | 1.0 | 304.0 | 4.9 | 1.0 |
| 1.5SMCJ170CA | BHR | 170.0 | 189 | 209.00 | 1.0 | 275.0 | 5.5 | 1.0 |





TVS 瞬態電壓抑制二極管
Voltage : 5V0 - 170V

1.5SMCJ5.0 - 1.5SMCJ170CA
1500W Surface Mount Transient Voltage Suppressor

Electrical Characteristics Curve

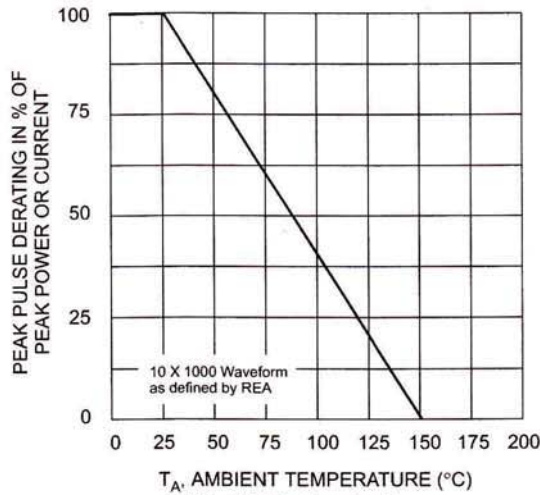


Fig. 1 Pulse Derating Curve

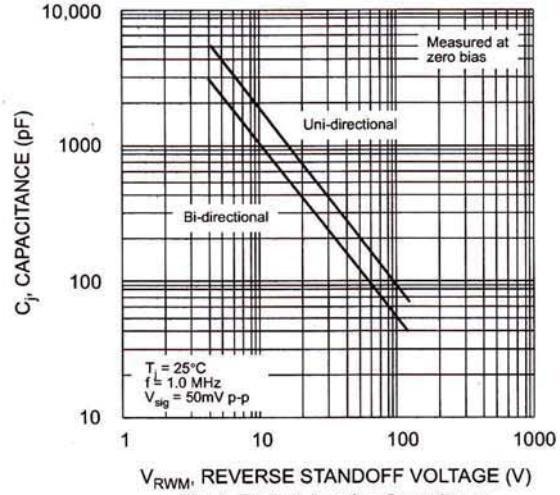


Fig. 2 Typical Junction Capacitance

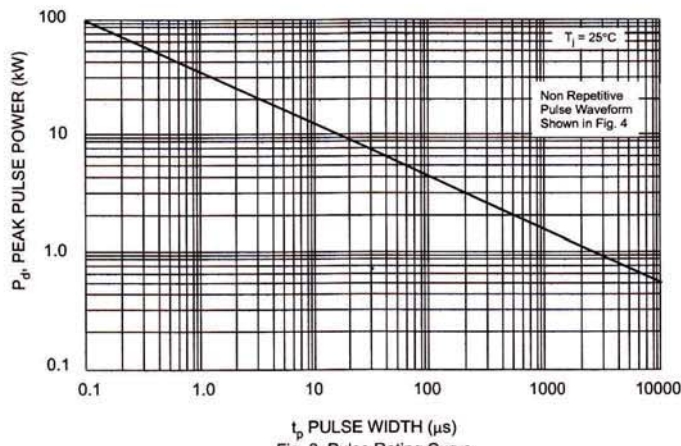


Fig. 3 Pulse Rating Curve

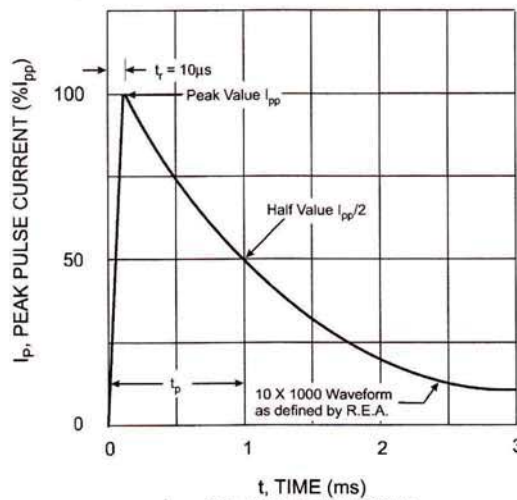


Fig. 4 Pulse Waveform



SINLOON®

TVS 瞬態電壓抑制二極管
Voltage : 5V0 - 170V

1.5SMCJ5.0 - 1.5SMCJ170CA
1500W Surface Mount Transient Voltage Suppressor

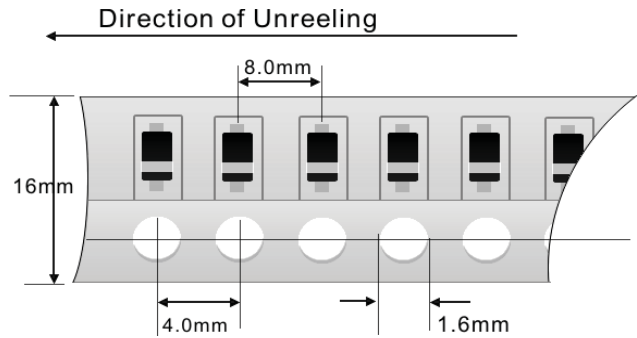
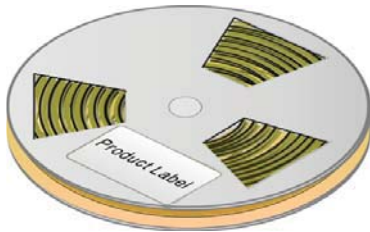
Packaging Information

| Dimension Reel Tape | Quantity (Pcs) | Inner Box Size L x W x H | Quantity (Pcs) | Carton Size L x W x H | Quantity (Pcs) | Gross Weight |
|---------------------|----------------|--------------------------|----------------|-----------------------|----------------|--------------|
| 330 mm | 3,000 | 340 x 337 x 45 mm | 6,000 | 370 x 370 x 420 mm | 48,000 | 19.0kg |

- Note:
1. Paper Reel, White or gray color.
 2. Components are packed in accordance with EIA standard 481- and 481-2
 3. Shipping quantity given is for minimum packing quantity only.
- For minimum order quantity, please consult the Sales Department.

Tape Reel

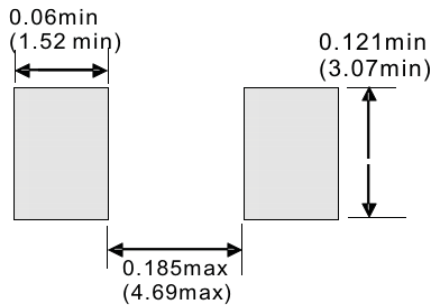
330 x 12mm



Carton:

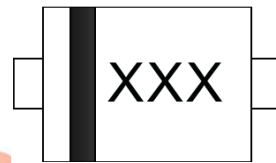


Recommended Footprint



Inched (mm)

Marking Information



Cathode: Polarity Band Except Bi-Direction Type
XXX: Device Code see Marking Code.

※美隆公司產品規格及其特性參數的改變或更新恕不另行通知。
※Mayloon characteristic parameters of electronic product specification changes or updates without notice to improve

