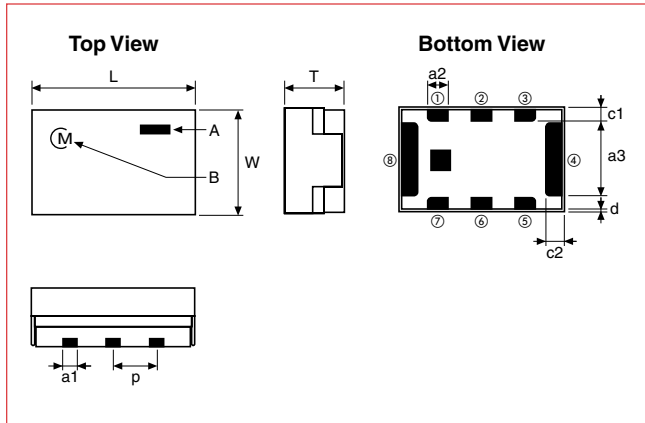


FEATURES

- Ultraminiature SMD, compatible with auto-mounting process
- Low insertion loss, high isolation, low distortion
- Low power consumption
- Adjustment-free
- Single supply operation
- LPF can be integrated on Tx

LMS30C/K/L TYPE

DIMENSIONS: mm



| Code | Meaning | | |
|------|--------------------------|--|--|
| A | Pin 1 Marking | | |
| B | Manufacturer's Name Code | | |

| Code | Dimensions | Code | Dimensions |
|------|------------|------|------------|
| L | 4.9 ± 0.3 | c1 | 0.4 ± 0.2 |
| W | 3.2 ± 0.2 | c2 | 0.4 ± 0.2 |
| T | 1.8 ± 0.2 | d | 0.1 ± 0.1 |
| a1 | 0.35 ± 0.2 | p | 1.27 ± 0.1 |
| a2 | 0.6 ± 0.1 | — | — |
| a3 | 2.2 ± 0.1 | — | — |

TERMINAL CONFIGURATION

| Terminal No. | Terminal Name | Terminal No. | Terminal Name |
|--------------|---------------|--------------|---------------|
| ① | Rx | ⑤ | Vc1 |
| ② | GND | ⑥ | ANT |
| ③ | Tx | ⑦ | GND |
| ④ | GND | ⑧ | GND |

LOGIC – LMS□□□□□□□□1□□

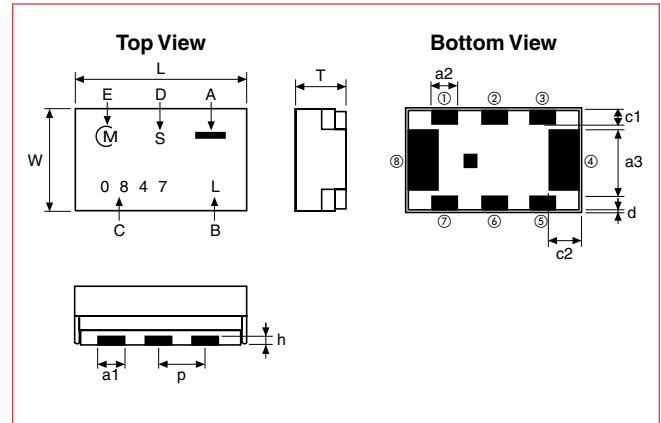
| Condition | Vc1 |
|-------------|------------|
| Tx – ANT ON | 2.5 ~ 5.5V |
| ANT – Rx ON | OV |

LOGIC – LMS□□□□□□□□0□□

| Condition | Vc1 | Vc2 |
|-------------|------------|------------|
| Tx – ANT ON | 2.5 ~ 5.5V | OV |
| ANT – Rx ON | OV | 2.5 ~ 5.5V |

LMS33L TYPE

DIMENSIONS: mm



| Code | Meaning | | |
|------|--------------------------------------|--|--|
| A | Pin 1 Marking | | |
| B | Integration Level (L: with LPF) | | |
| C | Tx fo or Rx fo, whichever lower | | |
| D | Type Indication (S: RF DIODE SWITCH) | | |
| E | Manufacturer's Name Code | | |

| Code | Dimensions (Last Three Digits) | | Code | Dimensions |
|------|--------------------------------|-----------|------|------------|
| | 002 | 001 | | |
| L | 5.4 ± 0.3 | — | c1 | 0.4 ± 0.2 |
| W | 4.0 ± 0.2 | — | c2 | 0.9 ± 0.2 |
| T | 2.3 ± 0.2 | 2.1 ± 0.2 | d | 0.1 ± 0.1 |
| a1 | 0.35 ± 0.2 | — | h | 0.4 ± 0.1 |
| a2 | 0.8 ± 0.1 | — | p | 1.27 ± 0.1 |
| a3 | 2.2 ± 0.1 | — | — | — |

TERMINAL CONFIGURATION

| Terminal No. | Terminal Name | Terminal No. | Terminal Name |
|--------------|---------------|--------------|---------------|
| ① | Rx | ⑤ | Vc1 |
| ② | GND | ⑥ | ANT |
| ③ | Tx | ⑦ | Vc2 |
| ④ | GND | ⑧ | GND |

MARKING: LMS36 & LMS33

| Mark | Description |
|------|--------------------------------|
| A | Directional Input Mark |
| B | Integration Level (C: Switch) |
| C | Frequency (unit: MHz) |
| D | Type Indication (S: RF Switch) |
| E | Manufacturer's Name Code |

MULTILAYER DEVICES

RF DIODE SWITCH

WITH INTEGRATED LPF

SPECIFICATIONS (-40 to +85°C)

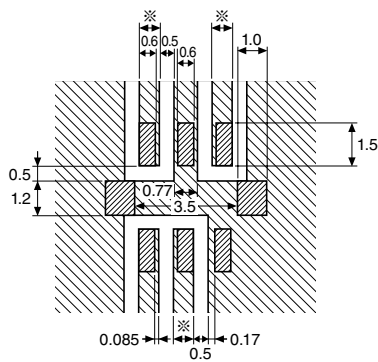
| Part Number | | Frequency Range (MHz) | Insertion Loss (dB max.) | | Current Consumption (mA max.) | Power Capacity (dBm) | Attenuation (dB min.) | |
|----------------|----|-----------------------|--------------------------|------------|-------------------------------|----------------------|-----------------------|--------|
| | | | Tx → ANT or ANT → Rx | | | | 2 x fo | 3 x fo |
| | | | 25°C | Over Temp. | | | | |
| LMS30C2450L003 | Tx | 2450 ± 50 | 0.85 | 1.00 | C.V./0.3 | 27 | — | — |
| | Rx | | 1.20 | 1.40 | | | — | — |
| LMS30K1880H103 | Tx | 1880 ± 30 | 1 | 1.15 | C.V./0.3 | 35 | 20 | 20 |
| | Rx | 1960 ± 30 | 1.1 | 1.25 | | | 15 | 10 |
| LMS30K1747H103 | Tx | 1747.5 ± 37.5 | 1 | 1.15 | C.V./0.3 | 35 | 20 | 20 |
| | Rx | 1842.5 ± 37.5 | 1.1 | 1.25 | | | 15 | 10 |
| LMS30L0897H103 | Tx | 897.5 ± 17.5 | 0.90 | 1.05 | C.V./0.3 | 35 | 25 | 25 |
| | Rx | 942 ± 17.5 | 1.00 | 1.15 | | | — | — |
| LMS33L0847H002 | Tx | 937.5 ± 37.5 | 0.8 | 0.95 | C.V./0.3 | 35 | 25 | 25 |
| | Rx | 847.5 ± 37.5 | 0.7 | 0.85 | | | — | — |
| LMS33L1441H001 | Tx | 1441 ± 12 | 0.8 | 0.95 | C.V./0.3 | 35 | 25 | 25 |
| | Rx | 1489 ± 12 | 0.7 | 0.85 | | | — | — |

VSWR: 2.0 max.
C.N.: Control Voltage: 2.5 ~ 5.5V
Tx ~ Rx isolation: 20dB min.

LAND PATTERN FOR RF DIODE SWITCH

DIMENSIONS: mm

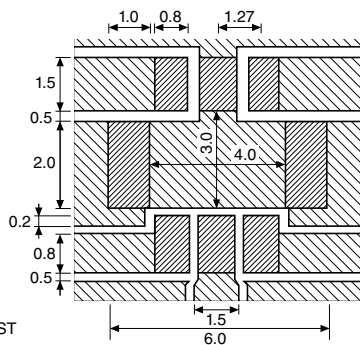
LMS30C/K/L



-  LAND
-  SOLDER RESIST
-  NO PATTERN SOLDER RESIST

※Line width to be designed to match 50Ω characteristic impedance, depending on PCB material and thickness.

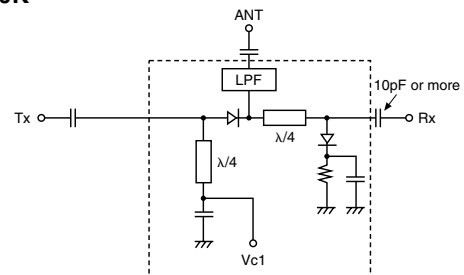
LMS33L



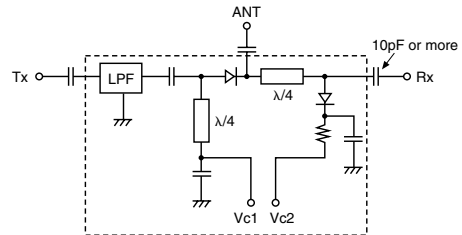
-  LAND
-  SOLDER RESIST
-  NO PATTERN SOLDER RESIST

EQUIVALENT CIRCUIT

LMS30K



LMS33L/LMS30L



LMS30C

