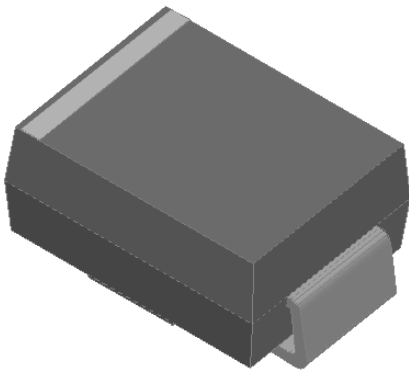


Surface Mount Ultra Fast Recovery Rectifier

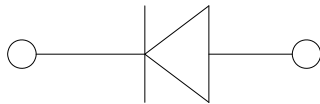


Features

- Low profile package
- Ideal for automated placement
- Glass passivated chip junction
- High forward surge capability
- Super Fast reverse recovery time
- Meets MSL level 1, per J-STD-020, LF maximum peak of 260 °C

Typical Applications

For use in high frequency rectification of power supplies, inverters, converters, and freewheeling diodes for consumer, and telecommunication.



Mechanical Data

- **Package:** DO-214AA (SMB)
Molding compound meets UL 94 V-0 flammability rating, RoHS-compliant, halogen-free
- **Terminals:** Tin plated leads, solderable per J-STD-002 and JESD22-B102
- **Polarity:** Cathode line denotes the cathode end

■ Maximum Ratings (T_a=25°C Unless otherwise specified)

PARAMETER	SYMBOL	UNIT	UG1JB
Device marking code			UG1JB
Maximum Repetitive Peak Reverse Voltage	VRRM	V	600
Maximum RMS Voltage	VRMS	V	420
Maximum DC blocking Voltage	VDC	V	600
Average rectified output current @60Hz sine wave, resistance load, TL (Fig.1)	I _O	A	1.0
Forward Surge Current (Non-repetitive) @60Hz Half-sine wave, 1 cycle, T _j =25°C	I _{FSM}	A	30
Forward Surge Current (Non-repetitive) @1ms, square wave, 1 cycle, T _j =25°C			60
Current squared time @1ms ≤ t ≤ 8.3ms T _j =25°C	I ² t	A ² s	3.735
Storage temperature	T _{stg}	°C	-55 ~ +150
Junction temperature	T _j	°C	-55 ~ +150

■ Electrical Characteristics (T_a=25°C Unless otherwise specified)

PARAMETER	SYMBOL	UNIT	TEST CONDITIONS	UG1JB
Maximum instantaneous forward voltage	V _F	V	I _F =1.0A	1.7
Maximum reverse recovery time	t _{rr}	ns	I _F =0.5A, I _R =1.0A, I _{rr} =0.25A	35
Maximum DC reverse current at rated DC blocking voltage	I _R	μA	T _j =25°C	5
			T _j =125°C	50
Typical junction capacitance	C _j	pF	Measured at 1MHz and Applied Reverse Voltage of 4.0 V.D.C	16



UG1JB

Dynamic Characteristics

PARAMETER	SYMBOL	UNIT	TEST CONDITIONS		Min	Typ	Max
Reverse Recovery Time	T_{RR}	ns	$T_j=25^\circ\text{C}$	$I_F=1\text{A}$, $di/dt=-50\text{A}/\mu\text{s}$ $V_{RM}=30\text{V}$	-	38	-
			$T_j=25^\circ\text{C}$	$I_F=1\text{A}$ $di/dt=-200\text{A}/\mu\text{s}$ $V_{RM}=400\text{V}$	-	32	-
			$T_j=125^\circ\text{C}$		-	52	-
Peak recovery current	I_{RRM}	A	$T_j=25^\circ\text{C}$	$I_F=1\text{A}$ $di/dt=-200\text{A}/\mu\text{s}$ $V_{RM}=400\text{V}$	-	2.9	-
			$T_j=125^\circ\text{C}$		-	4.7	-
Reverse recovery charge	Q_{rr}	nC	$T_j=25^\circ\text{C}$	$I_F=1\text{A}$ $di/dt=-200\text{A}/\mu\text{s}$ $V_{RM}=400\text{V}$	-	45.8	-
			$T_j=125^\circ\text{C}$		-	121.9	-
Non-repetitive avalanche energy	E_{AS}	mJ	$T_j=25^\circ\text{C}$	$I_R=0.3\text{A}$, $L=15\text{mH}$	0.7	-	-

Thermal Characteristics ($T_a=25^\circ\text{C}$ Unless otherwise specified)

PARAMETER	SYMBOL	UNIT	UG1JB
Typical Thermal resistance	$R_{\theta J-A}^{(1)}$	$^\circ\text{C}/\text{W}$	60
	$R_{\theta J-L}^{(1)}$		20
	$R_{\theta J-C}^{(1)}$		15

Note

(1) Thermal resistance from junction to ambient and from junction to lead mounted on P.C.B. with 0.3"X 0.3"(8.0 mmx8.0 mm) copper pad areas

Characteristics (Typical)

FIG.1: I_o -TL Cure

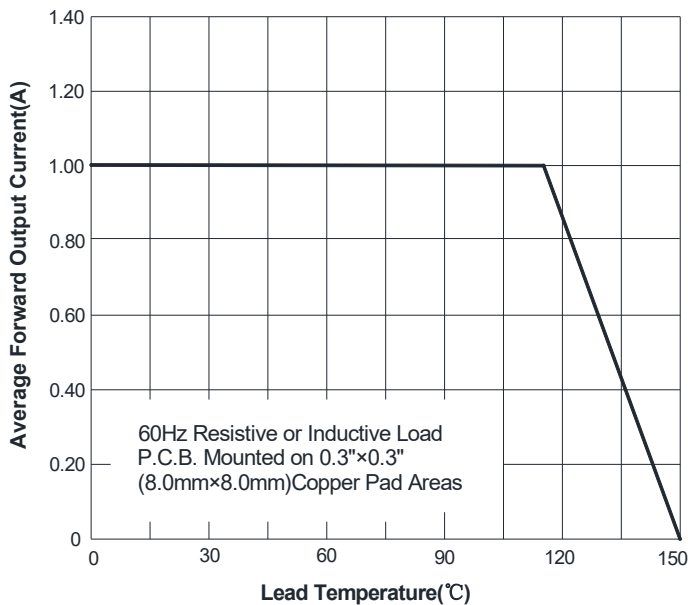


FIG.2: Forward Surge Current Capability

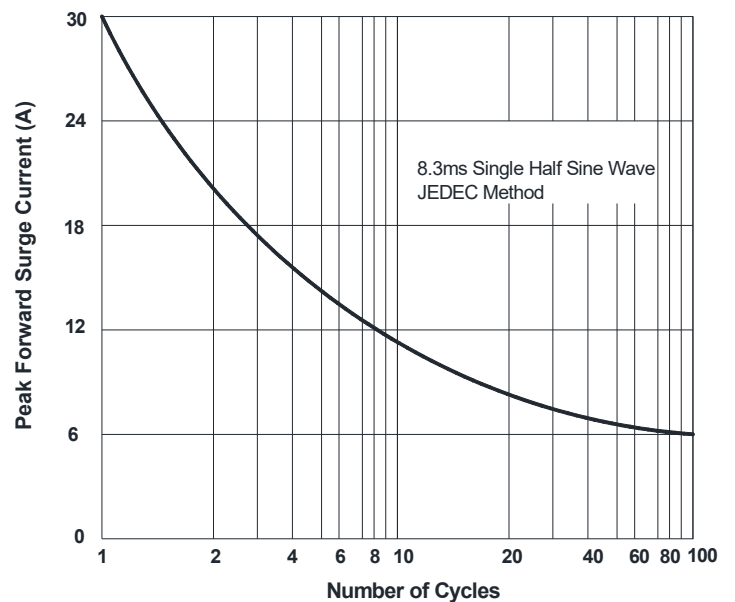


FIG.3: Typical Forward Characteristics

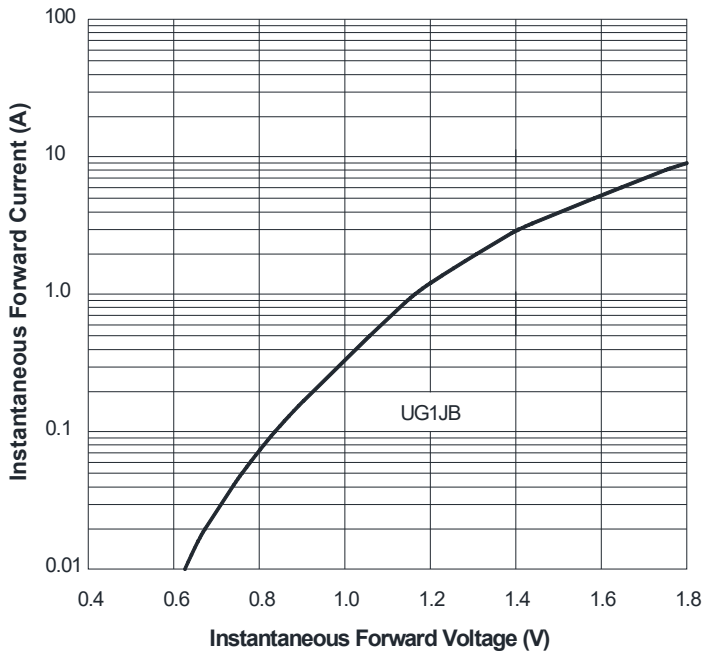


FIG.4: Typical Reverse Characteristics

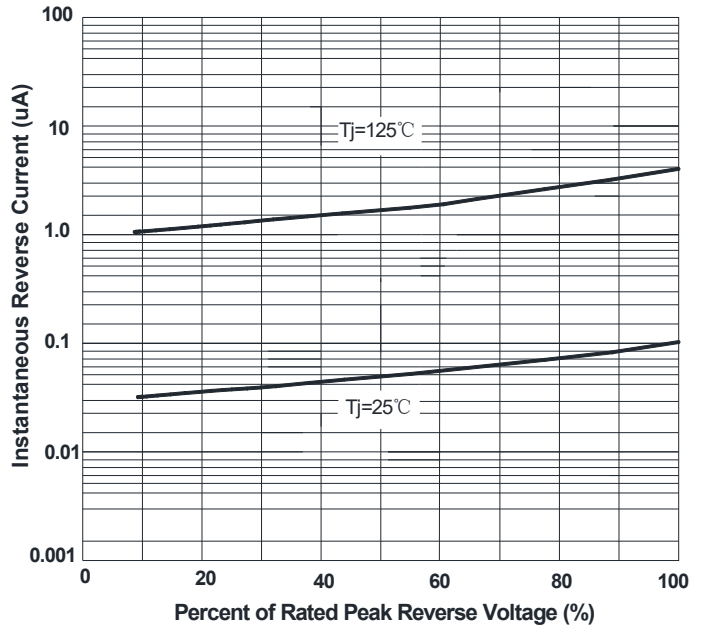
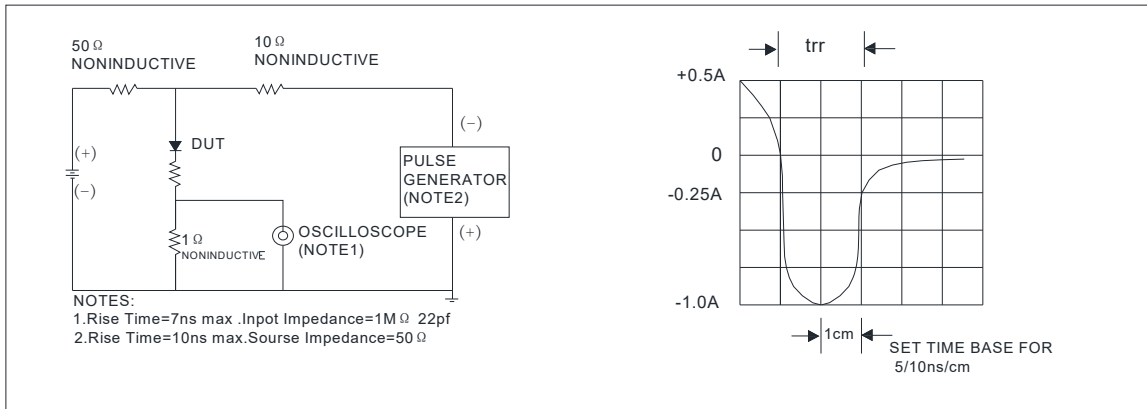


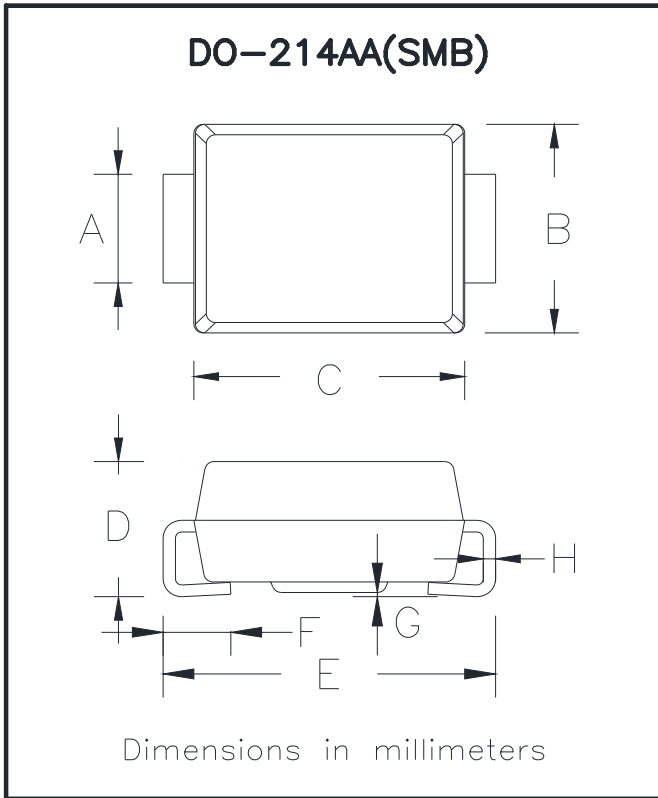
FIG.5: Diagram of circuit and Testing wave form of reverse recovery time



Ordering Information (Example)

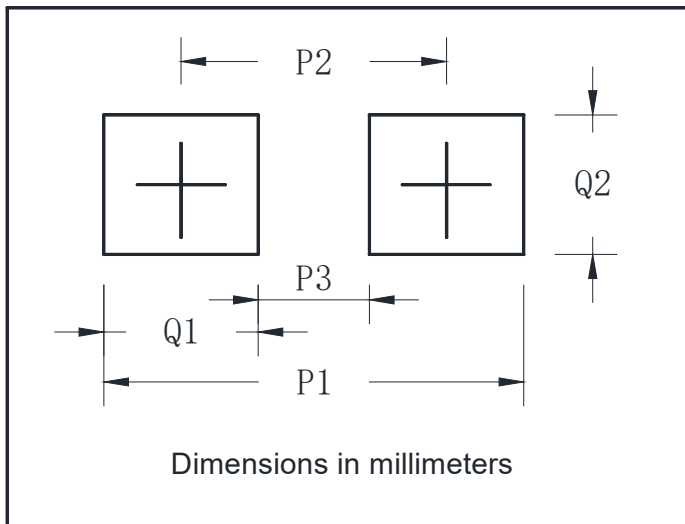
PREFERRED P/N	PACKAGE CODE	UNIT WEIGHT(g)	MINIMUM PACKAGE(pcs)	INNER BOX QUANTITY(pcs)	OUTER CARTON QUANTITY(pcs)	DELIVERY MODE
UG1JB	F1	Approximate 0.059	5000	/	80000	13" reel
UG1JB	F2	Approximate 0.059	7500	/	120000	13" reel
UG1JB	F3	Approximate 0.059	7500	/	60000	13" reel
UG1JB	F4	Approximate 0.059	1800	14400	57600	7" reel
UG1JB	F5	Approximate 0.059	2000	16000	64000	7" reel
UG1JB	F6	Approximate 0.059	5000	/	100000	13" reel

■ Outline Dimensions



DO-214AA(SMB)		
Dim	Min	Max
A	1.85	2.15
B	3.30	3.94
C	4.05	4.75
D	1.99	2.61
E	5.21	5.59
F	0.90	1.41
G	0.05	0.20
H	0.15	0.31

■ Suggested Pad Layout



DO-214AA(SMB)	
Dim	Millimeters
P1	6.8
P2	4.3
P3	1.8
Q1	2.5
Q2	2.3



UG1JB

Disclaimer

The information presented in this document is for reference only. Yangzhou Yangjie Electronic Technology Co., Ltd. reserves the right to make changes without notice for the specification of the products displayed herein to improve reliability, function or design or otherwise.

The product listed herein is designed to be used with ordinary electronic equipment or devices, and not designed to be used with equipment or devices which require high level of reliability and the malfunction of which would directly endanger human life (such as medical instruments, transportation equipment, aerospace machinery, nuclear-reactor controllers, fuel controllers and other safety devices), Yangjie or anyone on its behalf, assumes no responsibility or liability for any damages resulting from such improper use of sale.

This publication supersedes & replaces all information previously supplied. For additional information, please visit our website [http:// www.21yangjie.com](http://www.21yangjie.com) , or consult your nearest Yangjie's sales office for further assistance.