



## **Product Specifications**

**17.0" SXGA Color TFT-LCD Module**  
**Model Name: L170E3**  
**EC: -1**

**(◆) Preliminary Specifications**  
**( ) Final Specifications**

**Note: This Specification is subject to change without notice.**

**9.0 Other requirements**

- 9.1 Smoke free design
- 9.2 National test lab requirement

**10.0 Mechanical Characteristics**

**ii Record of Revision**

Version and Date	Page	Old description	New Description	Remark
0.1. 2000/11/24	All	First Edition for Customer	All	
0.2. 2001/01/03	10	The first LVDS.... while the second LVDS.... odd pixels.	The one LVDS ... while the other LVDS.....odd pixels.	Spec. change
0.2. 2001/01/03	13		O = "First Pixel Data" E = "Second Pixel Data"	Add
0.2. 2001/01/03	9	0,1...1278,1279	1, 2 ..... 1279, 1280	Spec change.
0.3.2001/2/15	5	Weight = 2200(typ)	Weight = 2000 (typ)	Spec change
0.3.2001/2/15	7	Viewing angle (U/D/L/R,CR>10) = (45/70/60/60)	Viewing angle (U/D/L/R, CR>10) = (70/70/75/75)	Spec change.

**1.0 Handling Precautions**

- 1) Since front polarizer is easily damaged, pay attention not to scratch it.
- 2) Be sure to turn off power supply when inserting or disconnecting from input connector.
- 3) Wipe off water drop immediately. Long contact with water may cause discoloration or spots.
- 4) When the panel surface is soiled, wipe it with absorbent cotton or other soft cloth.
- 5) Since the panel is made of glass, it may break or crack if dropped or bumped on hard surface.
- 6) Since CMOS LSI is used in this module, take care of static electricity and insure human earth when handling.
- 7) Do not open nor modify the Module Assembly.

- 8) Do not press the reflector sheet at the back of the module to any directions.
- 9) At the insertion or removal of the Signal Interface Connector, be sure not to rotate nor tilt the Interface Connector of the TFT-LCD module.
- 10) After installation of the TFT-LCD module into an enclosure (LCD monitor housing, for example), do not twist nor bend the TFT -LCD module even momentary. At designing the enclosure, it should be taken into consideration that no bending/twisting forces are applied to the TFT -LCD module from outside. Otherwise the TFT -LCD module may be damaged.

## 2.0 General Description

This specification applies to the 17.0 inch Color TFT-LCD Module L170E3-1.

The display supports the SXGA (1280(H) x 1024(V)) screen format and 16.7M colors (RGB 8-bits data).

All input signals are 2 Channel LVDS interface compatible.

This module does not contain an inverter card for backlight.

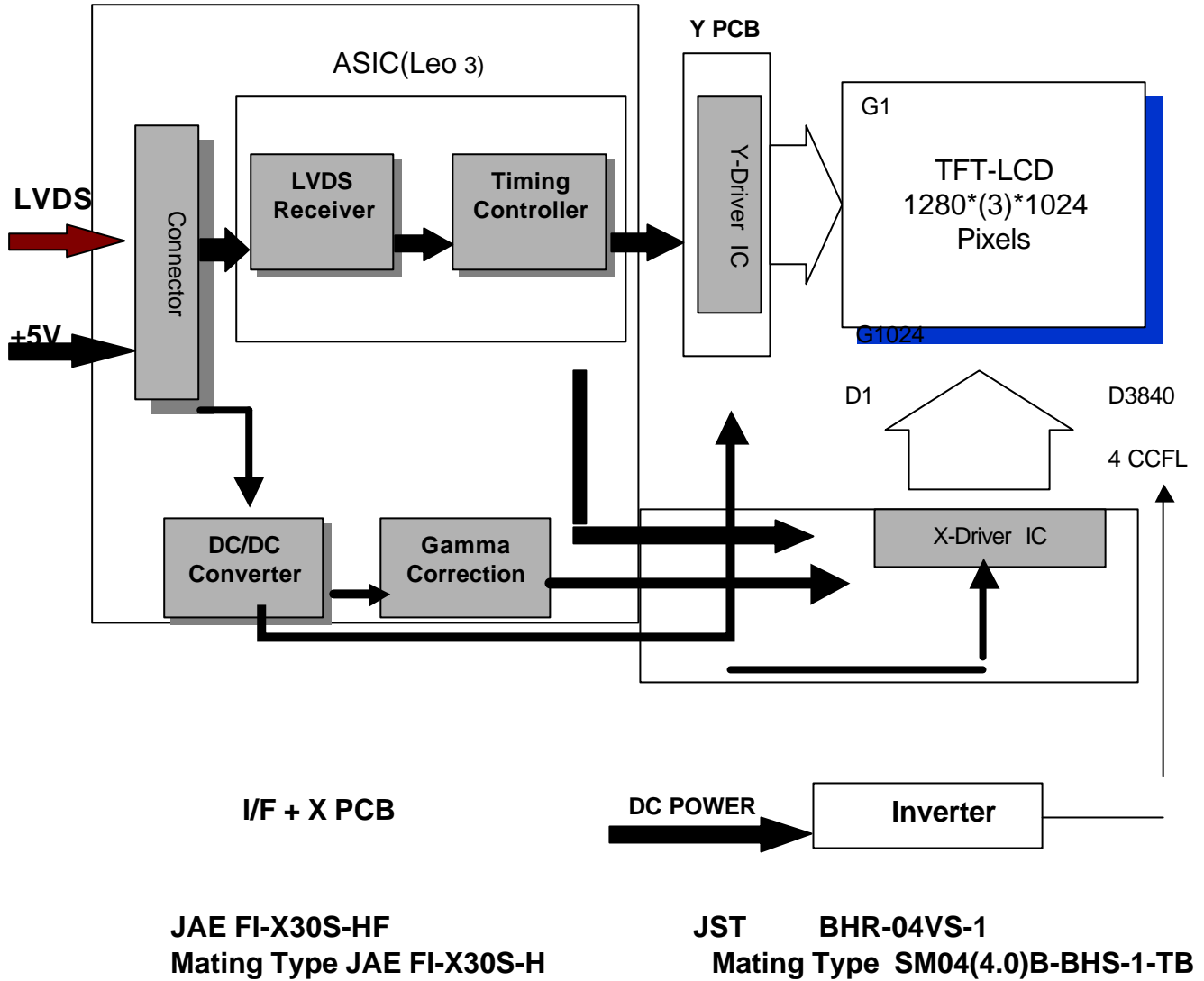
## 2.1 Display Characteristics

The following items are characteristics summary on the table under 25 . condition:

ITEMS	Unit	SPECIFICATIONS
Screen Diagonal	[mm]	432(17.0")
Active Area	[mm]	337.920 (H) x 270.336(V)
Pixels H x V		1280(x3) x 1024
Pixel Pitch	[mm]	0.264 (per one triad) x 0.264
Pixel Arrangement		R.G.B. Vertical Stripe
Display Mode		Normally White
White Luminance	[cd/m <sup>2</sup> ]	250 (Typ)
Contrast Ratio		400 : 1 (Typ)
Optical Response Time	[msec]	45 (Typ)
Nominal Input Voltage VDD	[Volt]	+5.0 V
Power Consumption (VDD line + CCFL line)	[Watt]	25W(Max) (w/o Inverter, All black pattern)
Weight	[Grams]	2000 (Typ)
Physical Size	[mm]	383.5(W) x 306(H) x 20.0(D) (Typ)
Electrical Interface		Even/Odd R/G/B data(8bits),3 sync signal, Clock
Support Color		16.7M colors ( RGB 8-bit data )
Temperature Range		
Operating	[°C]	0 to +50
Storage (Shipping)	[°C]	-20 to +60

## 2.2 Functional Block Diagram

The following diagram shows the functional block of the 17.0 inches Color TFT-LCD Module:



### 2.3 Optical Characteristics

The optical characteristics are measured under stable conditions at 25. (Room Temperature):

Item	Unit	Conditions	Min.	Typ.	Max.
Viewing Angle	[degree]	Horizontal (Right)	-	75/75	-
	[degree]	CR = 10 (Left)	-		-
	[degree]	Vertical (Up)	-	70	-
	[degree]	CR = 10 (Down)	-	70	-
	[degree]	Horizontal (Right)	-	80/80	-
	[degree]	CR = 5 (Left)	-		-
	[degree]	Vertical (Up)	-	55	-
	[degree]	CR = 5 (Down)	-	80	-
Contrast ratio		Normal Direction	TBD	400	-
Response Time	[msec]	Raising Time	-	30	-
	[msec]	Falling Time	-	15	-
	[msec]	Raising + Falling	-	45	-
Color / Chromaticity Coordinates (CIE)		Red x	TBD	0.63	TBD
		Red y	TBD	0.33	TBD
		Green x	TBD	0.30	TBD
		Green y	TBD	0.60	TBD
		Blue x	TBD	0.15	TBD
		Blue y	TBD	0.10	TBD
Color Coordinates (CIE) White		White x	TBD	0.31	TBD
		White y	TBD	0.33	TBD
Luminance Uniformity (Note 1)	[%]		80	85	-
White Luminance at CCFL 6.0mA(center point)	[cd/m <sup>2</sup> ]		200	250	-
Crosstalk ( in 75Hz)	[%]				TBD

Note 1 Measure points & Diagram

$$x = \frac{\text{Display Length distance}}{10}$$

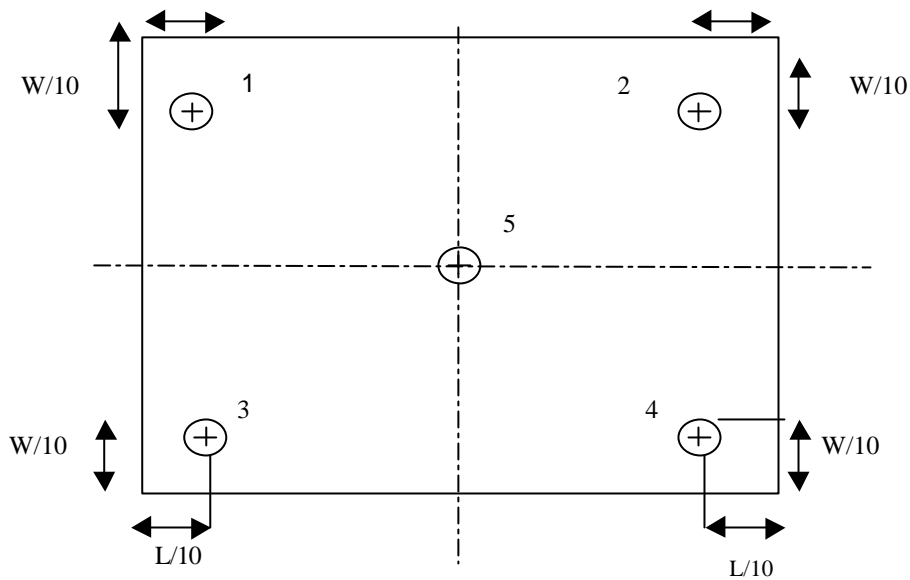
$$y = \frac{\text{Display Width distance}}{10}$$

Minimum Luminance in 5 Points (1-5)

$$\text{Uniformity} = \frac{\text{Minimum Luminance in 5 Points (1-5)}}{\text{Maximum Luminance in 5 Points (1-5)}}$$

This panel is compatible with TCO99 approbation in luminance uniformity <1.7, luminance contrast >0.5

LCD Display area = 337.9 x 270.4 mm



## 2.4 Pixel format image

Following figure shows the relationship of the input signals and LCD pixel format.



### 3.0 Electrical characteristics

#### 3.1 Absolute Maximum Ratings

Absolute maximum ratings of the module is as following:

Item	Symbol	Min	Max	Unit	Conditions
Logic/LCD Drive Voltage	VIN	-0.3	+5.5	[Volt]	
Select LVDS data order	SELLVDS	NC	NC	[Volt]	
CCFL Inrush current	ICFLL	-	38	[mA]	Note 1
CCFL Current	ICFL	-	7.6	[mA] rms	
Operating Temperature	TOP	0	+50	[°C]	Note 2
Operating Humidity	HOP	8	95	[%RH]	Note 2
Storage Temperature	TST	-20	+60	[°C]	Note 2
Storage Humidity	HST	8	95	[%RH]	Note 2

**Note 1 : Duration=50 msec.**

**Note 2 : Maximum Wet-Bulb should be 39° and No condensation.**

#### 3.2 Connectors

Physical interface is described as for the connector on module.

These connectors are capable of accommodating the following signals and will be following components.

<b>Connector Name / Designation</b>	Interface Connector / Interface card
<b>Manufacturer</b>	JAE or compatible
<b>Type Part Number</b>	FI-X30S-HF
<b>Mating Housing Part Number</b>	FI-X30S-H

<b>Connector Name / Designation</b>	Lamp Connector / Backlight lamp
<b>Manufacturer</b>	JST
<b>Type Part Number</b>	BHR-04VS-1
<b>Mating Type Part Number</b>	SM04(4.0)B-BHS-1-TB

### 3.3 Signal Pin

Pin#	Signal Name	Pin#	Signal Name
1	GND	2	RxO0-
3	RxO0+	4	RxO1-
5	RxO1+	6	RxO2-
7	RxO2+	8	GND
9	RxOC-	10	RxOC+
11	RxO3-	12	RxO3+
13	RxE0-	14	RxE0+
15	GND	16	RxE1-
17	RxE1+	18	GND
19	RxE2-	20	RxE2+
21	RxEC-	22	RxEC+
23	RxE3-	24	RxE3+
25	GND	26	NC
27	NC	28	NC
29	Power	30	Power
31	Power	32	GND

### 3.4 Signal Description

The module using a pair of LVDS receiver SN75LVDS82(Texas Instruments) or compatible. LVDS is a differential signal technology for LCD interface and high speed data transfer device. Transmitter shall be SN75LVDS83(negative edge sampling) or compatible. The one LVDS port(RxExxx) transmits even pixels while the other LVDS port(RxOxxx) transmits odd pixels.

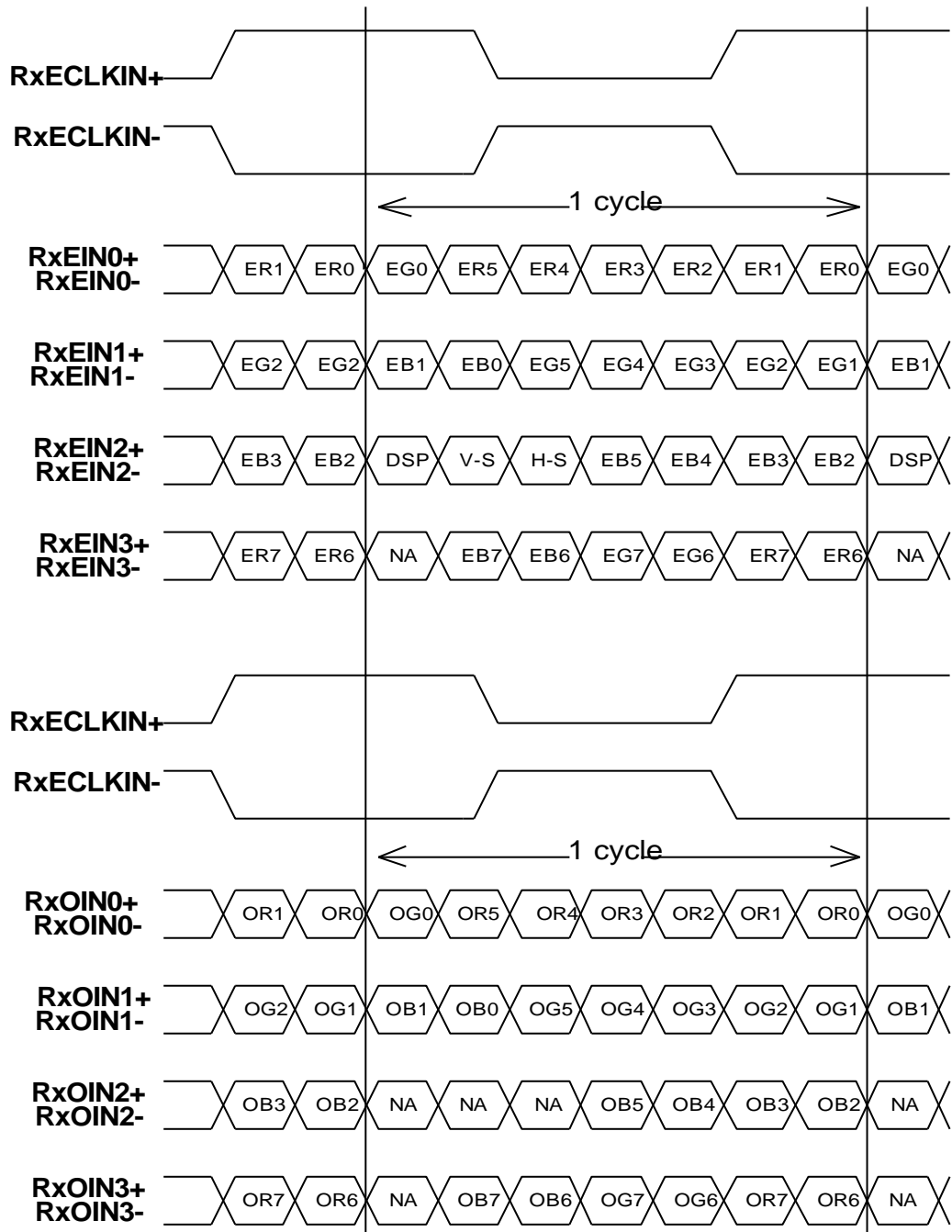
PIN #	SIGNAL NAME	DESCRIPTION
1	GND	Power Ground
2	RxO0-	Negative LVDS differential data input (Odd data)
3	RxO0+	Positive LVDS differential data input (Odd data)
4	RxO1-	Negative LVDS differential data input (Odd data)
5	RxO1+	Positive LVDS differential data input (Odd data)
6	RxO2-	Negative LVDS differential data input (Odd data)
7	RxO2+	Positive LVDS differential data input (Odd data)
8	GND	Power Ground
9	RxOC-	Negative LVDS differential clock input (Odd clock)
10	RxOC+	Positive LVDS differential clock input (Odd clock)
11	RxO3-	Negative LVDS differential data input (Odd data)
12	RxO3+	Positive LVDS differential data input (Odd data)
13	RxE0-	Negative LVDS differential data input (Even clock)
14	RxE0+	Positive LVDS differential data input (Even data)
15	GND	Power Ground
16	RxE1-	Positive LVDS differential data input (Even data)
17	RxE1+	Negative LVDS differential data input (Even data)
18	GND	Power Ground
19	RxE2-	Negative LVDS differential data input (Even data,H-Sync,V-Sync,DSPTMG)
20	RxE2+	Positive LVDS differential data input (Even data,H-Sync,V-Sync,DSPTMG))
21	RxEC-	Negative LVDS differential clock input (Even clock)
22	RxEC+	Positive LVDS differential clock input (Even clock)
23	RxE3-	Negative LVDS differential data input (Even data)
24	RxE3+	Positive LVDS differential data input (Even data)
25	GND	Power Ground
26	NC	-
27	NC	-
28	NC	-
29	POWER	Power
30	POWER	Power
31	POWER	Power
32	GND	Power Ground

**Note:** Input signals of odd and even clock shall be the same timing.

LVDS DATA Name	Description
----------------	-------------

DSP	Display Timing :When the signal is high, the pixel data shall be valid to be displayed
V-S	Vertical Sync :Both Positive and Negative polarity are acceptable
H-S	Horizontal Sync :Both Positive and Negative polarity are acceptable

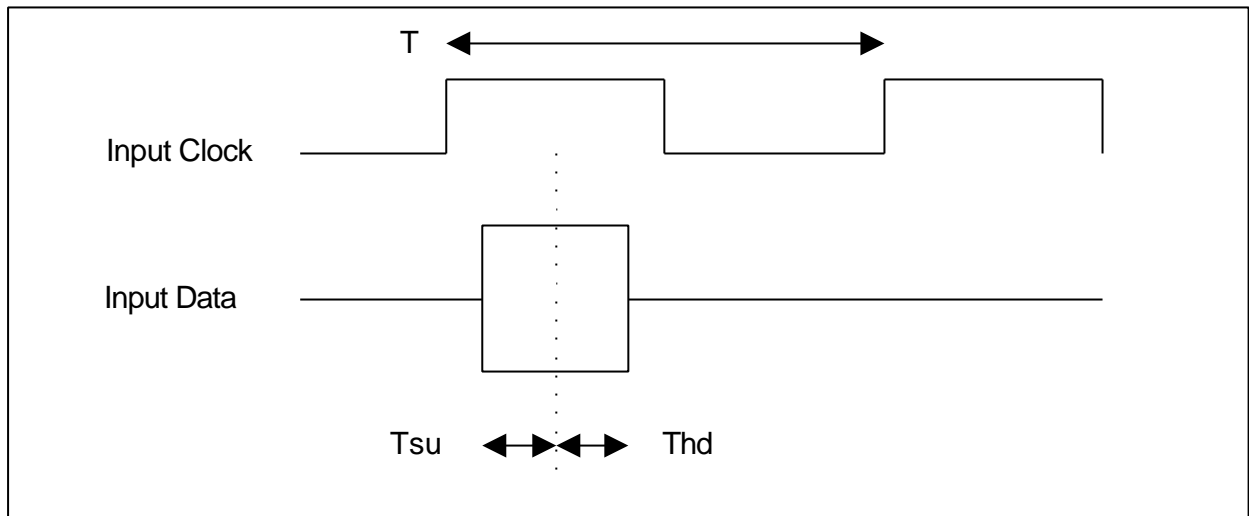
<b>TI LVDS X'mitter SN75LVDS83</b>	<b>Module LVDS signal (interface connector pin7)</b>
<b>Signal Name</b>	<b>Low(open)</b>
D0	Red0
D1	Red1
D2	Red2
D3	Red3
D4	Red4
D5	Red7
D6	Red5
D7	Green0
D8	Green1
D9	Green2
D10	Green6
D11	Green7
D12	Green3
D13	Green4
D14	Green5
D15	Blue0
D16	Blue6
D17	Blue7
D18	Blue1
D19	Blue2
D20	Blue3
D21	Blue4
D22	Blue5
D23	NA
D24	H Sync
D25	V Sync
D26	Display Timing
D27	Red6



**Note: R/G/B data 7:MSB, R/G/B data 0:LSB**

O = "First Pixel Data"

E = "Second Pixel Data"



### 3.5 Signal Electrical Characteristics

Input signals shall be low or Hi-Z state when  $V_{in}$  is off

It is recommended to refer the specifications of SN75LVDS82DGG(Texas Instruments) in detail.

Each signal characteristics are as follows;

Parameter	Condition	Min	Max	Unit
$V_{th}$	Differential Input High Voltage( $V_{cm}=+1.2V$ )		100	[mV]
$V_{tl}$	Differential Input Low Voltage( $V_{cm}=+1.2V$ )	-100		[mV]

### 3.6 Interface Timings

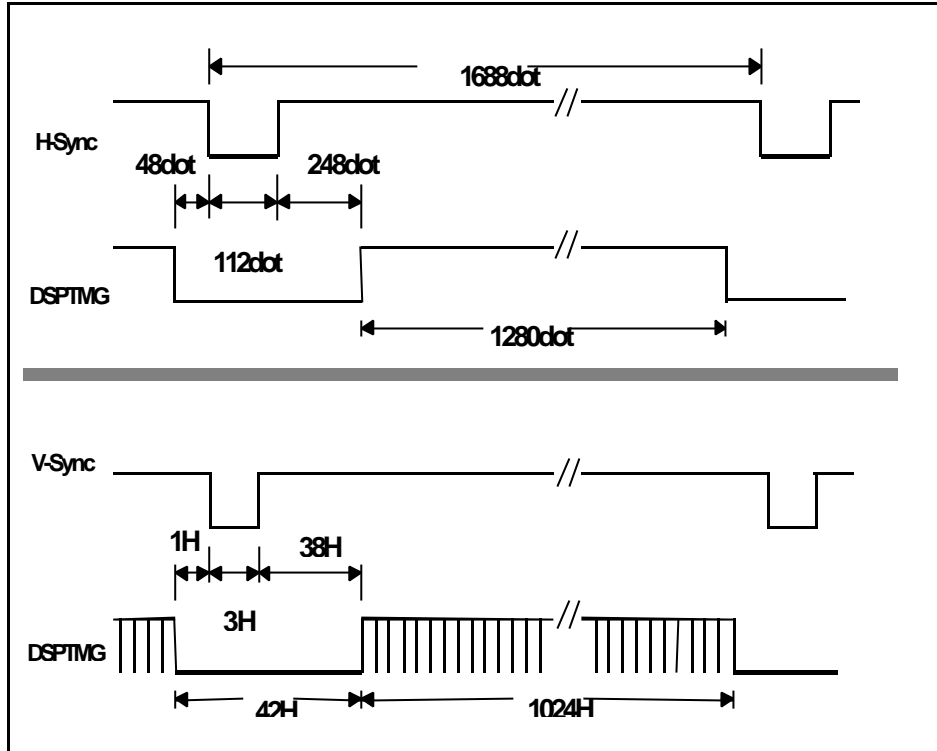
Basically, interface timings described here is not actual input timing of LCD module but output timing of SN75LVDS82DGG (Texas Instruments) or equivalent.

#### 3.6.1 Timing Characteristics

Signal	Item	Symbol	MIN	TYP	MAX	Unit
DTCLK	Freq.	Fdck	50	67.5	70	MHz
DTCLK	Cycle	Tck	14.2	14.8	20	ns
+V-Sync	Frame Rate	1/Tv	56.25	75	77	Hz
+V-Sync	Cycle	Tv	13	13.33	17.78	ms
+V-Sync	Cycle	Tv	1035	1066	2047	lines
+V-Sync	Active level	Tva	3	3		lines
+V-Sync	V-back porch	Tvb	7	38	63	lines
+V-Sync	V-front porch	Tvf	1	1		lines
+DSPTMG	V-Line	m	-	1024	-	lines
+H-Sync	Scan rate	1/Th	-	80.06	-	KHz
+H-Sync	Cycle	Th	800	844	1023	Tck
+H-Sync	Active level	Tha(*1)	4	56		Tck
+H-Sync	Back porch	Thb(*1)	4	124		Tck
+H-Sync	Front porch	Thf	4	24		Tck
+DSPTMG	Display Pixels	n	-	640	-	Tck

**Note:** Typical value is refer to VESA STANDARD , (\*1) Tha+Thb should be less than 1024 Tck.

#### 3.6.2 Timing Definition



Note :1280X1024 at 75 Hz (VESA STANDARD), Horizontal line rate :13.02us, Dot clock :135MHz.

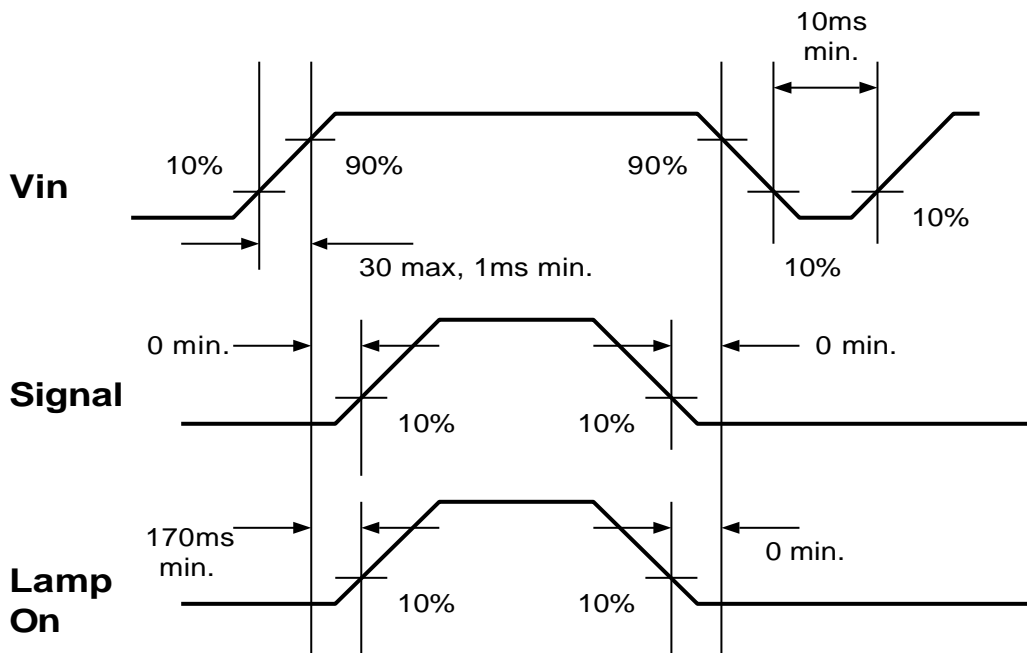
### 3.7 Power Consumption

Input power specifications are as follows;

Symbol	Parameter	Min	Typ	Max	Units	Condition
VDD	Logic/LCD Drive Voltage	4.75	5	5.25	[Volt]	
IDD	VDD current		850	1100	[mA]	
PDD	VDD Power		4.25	5.5	[Watt]	Vin=5V ,All Black Pattern
VDDrp	Allowable Logic/LCD Drive Ripple Voltage			100	[mV] p-p	
VDDns	Allowable Logic/LCD Drive Ripple Noise			100	[mV] p-p	

### 3.8 Power ON/OFF Sequence

Vin power and lamp on/off sequence is as follows. Interface signals are also shown in the chart. Signals from any system shall be Hi-Z state or low level when Vin is off.



## 4.0 Backlight Characteristics

### 4.1 Signal for Lamp connector

Pin #	Signal Name
1	Lamp High Voltage
2	Lamp High Voltage
3	No Connection
4	Ground

### 4.2 Parameter guide line for CFL Inverter

Symbol	Parameter	Min	Typ	Max	Units	Condition
(L255)	White Luminance	200	250	-	[cd/m <sup>2</sup> ]	(Ta=25°C)
ISCFL	CCFL standard current	5.5	6.0	6.5	[mA] rms	(Ta=25°C)
IRCFL	CCFL operation range	3.0	6.0	7.0	[mA] rms	(Ta=25°C)
ICFL	CCFL Inrush current	-	26	34	[mA]	Note 1
fCFL	CCFL Frequency	40	50	80	[KHz]	(Ta=25°C) Note 2
ViCFL (0°C)	CCFL Ignition Voltage			1700	[Volt] rms	(Ta=0°C) Note 4
ViCFL (25°C)	CCFL Ignition Voltage			1200	[Volt] rms	(Ta=25°C) Note 4
VCFL	CCFL Discharge Voltage (Reference)		720	863	[Volt] rms	(Ta=25°C) Note 3
PCFL	CCFL Power consumption		17.3	19.0	[Watt]	(Ta=25°C) Note 3

Note 1: Duration=50 [msec]

Note 2: CCFL Frequency should be carefully determined to avoid interference between inverter and TFT LCD

Note 3: Calculator value for reference (ICFL×VCFL=PCFL)

Note 4: CCFL inverter should be able to give out a power that has a generating capacity of over 1700 voltage. Lamp units need 1700 voltage minimum for ignition

19

(C) Copyright Acer Display Technology, Inc.

19/23

February, 2000 All Rights Reserved.

L170E3-1 Ver0.2

No Reproduction and Redistribution Allowed.26

## 5.0 Vibration, Shock, and Drop

### 5.1 Vibration & Shock

Frequency: 10 - 200Hz

Sweep: 30 Minutes each Axis (X, Y, Z)

Acceleration: 1.5G(10~200Hz P- P)

Test method:

<b>Acceleration (G)</b>	1.5
<b>Frequency (Hz)</b>	10~200~10
<b>Active time(min)</b>	30

### 5.2 Shock Test Spec:

<b>Acceleration (G) -a</b>	35
<b>Active time -b</b>	20
<b>Wave form</b>	half-sin
<b>Times</b>	1

Direction:  $\pm X$ ,  $\pm Y$ ,  $\pm Z$

### 5.3 Drop test

Package test: The drop height is 60 cm.

## 6.0 Environment

The display module will meet the provision of this specification during operating condition or after storage or shipment condition specified below. Operation at 10% beyond the specified range will not cause physical damage to the unit.

### 6.1 Temperature and Humidity

#### 6.1.1 Operating Conditions

The display module operates error free, when operated under the following conditions;

Temperature	0 °C to 50 °C
Relative Humidity	8% to 95%
Wet Bulb Temperature	39.0 °C

#### 6.1.2 Shipping Conditions

The display module operates error free, after the following conditions;

Temperature	-20 °C to 60 °C
Relative Humidity	8% to 95%
Wet Bulb Temperature	39.0 °C

### 6.2 Atmospheric Pressure

The display assembly is capable of being operated without affecting its operations over the pressure range as following specified;

	Pressure	Note
Maximum Pressure	1040hPa	0m = sea level
Minimum Pressure	674hPa	3048m = 10.000 feet

Note : Non-operation attitude limit of this display module = 30,000 feet. = 9145 m.

### 6.3 Thermal Shock

The display module will not sustain damage after being subjected to 100 cycles of rapid temperature change. A cycle of rapid temperature change consists of varying the temperature from -20°C to 60°C, and back again.

<b>Thermal shock cycle</b>	-20 °C for 30min
	60 °C for 30min

Power is not applied during the test. After temperature cycling, the unit is placed in normal room ambient for at least 4 hours before powering on.

## 7.0 Reliability

This display module and the packaging of that will comply following standards.

### 7.1 Failure Criteria

The display assembly will be considered as failing unit when it no longer meets any of the requirements stated in this specification. Only as for maximum white luminance, following criteria is applicable.

**Note : Maximum white Luminance shall be 75 cd/m<sup>2</sup> or more.**

### 7.2 Failure Rate

The average failure rate of the display module (from first power-on cycle till 1,000 hours later) will not exceed 1.0%.  
The average failure rate of the display module from 1,000 hours until 16,000 hours will not exceed 0.7% per 1000 hours.

#### 7.2.1 Usage

The assumed usage for the above criteria is:

- 220 power-on hours per month
- 500 power on/off cycles per month
- Maximum brightness setting
- Operation to be within office environment (25°C typical)

#### 7.2.2 Component De-rating

All the components used in this device will be checked the load condition to meet the failure rate criteria.

### 7.3 CCFL Life

The assumed CCFL Life will be longer than 30,000 hours, typical value is 50,000 hours under stable condition at 25 ± 5°C;

Standard current at 6.0 ± 0.5mA.

Definition of life: brightness becomes 50% or less than the minimum luminance value of CCFL.

### 7.4 ON/OFF Cycle

The display module will be capable of being operated over the following ON/OFF Cycles.

ON/OFF	Value	Cycles
+Vin and CCFL power	35,000	10 seconds on / 10 seconds off

## **8.0 Safety**

### **8.1 Sharp Edge Requirements**

There will be no sharp edges or comers on the display assembly that could cause injury.

## **8.2 Materials**

### **8.2.1 Toxicity**

There will be no carcinogenic materials used anywhere in the display module. If toxic materials are used, they will be reviewed and approved by the responsible ADT Toxicologist.

### **8.2.2 Flammability**

All components including electrical components that do not meet the flammability grade UL94-V1 in the module will complete the flammability rating exception approval process. The printed circuit board will be made from material rated 94-V1 or better. The actual UL flammability rating will be printed on the printed circuit board.

## **8.3 Capacitors**

If any polarized capacitors are used in the display assembly, provisions will be made to keep them from being inserted backwards.

## **8.4 Hazardous Voltages**

Any point exceeding 42.4 volts meets the requirement of the limited current circuit. The current through a 2K. resistance is less than  $0.7 \times f$  (kHz) mA.

## 9.0 Other requirements

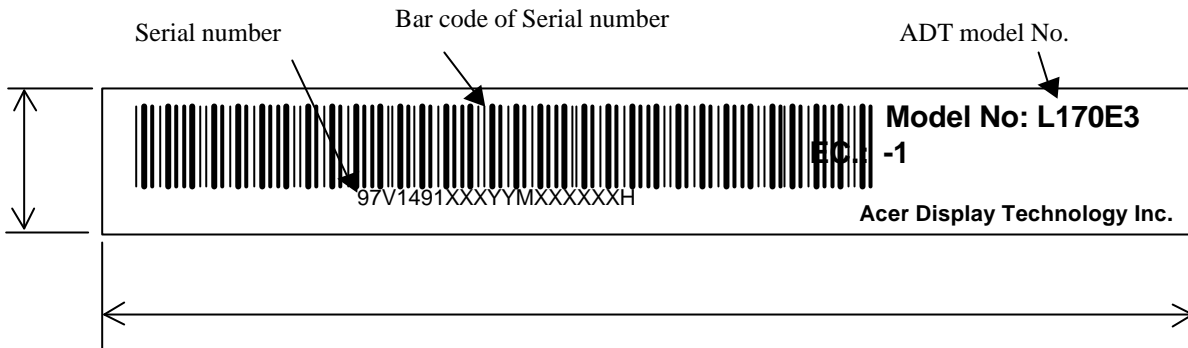
### 9.1 National Test Lab Requirement

The display module will satisfy all requirements for compliance to

<b>UL 1950, First Edition</b>	U.S.A. Information Technology Equipment
<b>CSA C22.2 No.950-M89</b>	Canada, Information Technology Equipment
<b>EEC 950</b>	International, Information Technology Equipment
<b>EN 60 950</b>	International, Information Processing Equipment (European Norm for IEC950)

### 9.2 Label

#### 9.2.1 Product label



#### 9.2.2 Serial number and definition

97V1491XXX YY M XXXXXX H

↑                      ↑                      ↑                      ↑                      ↓  
 Part number    Year    Month    Serial Number    Hsinchu plant

Year	
YY	Year
00	2000
01	2001
02	2002
03	2003

Month			
M	Month	M	Month
1	Jan	7	Jul
2	Feb	8	Aug
3	Mar	9	Sep
4	Apr	A	Oct
5	May	B	Nov
6	Jun	C	Dec



