

**SCHOTTKY RECTIFIER**

**3 Amp**

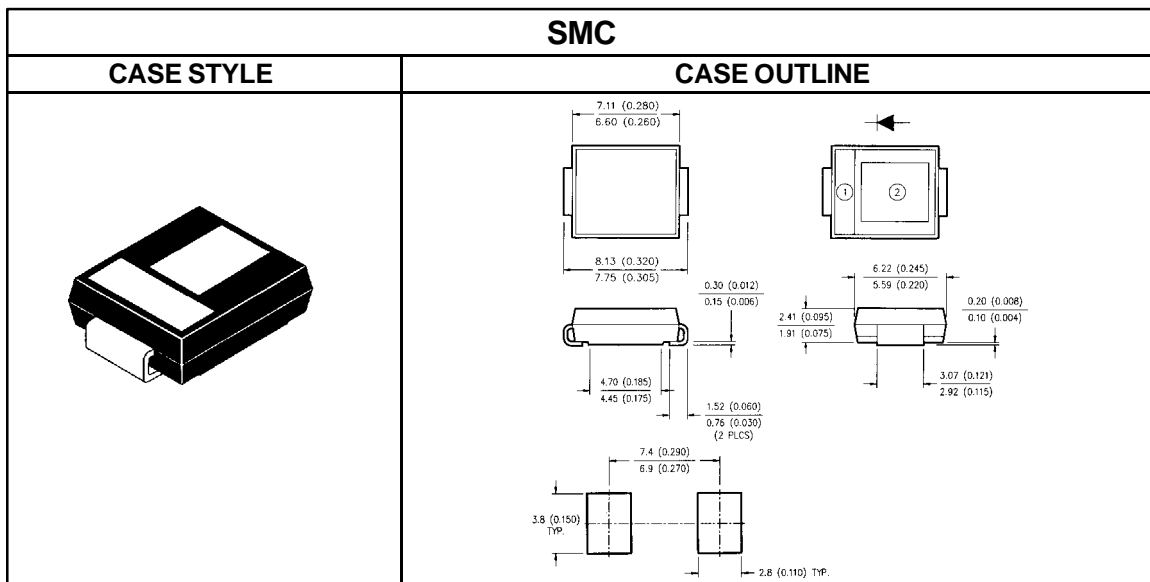
**Major Ratings and Characteristics**

Characteristics	30BQ060	Units
$I_{F(AV)}$ Rectangular waveform	3.0	A
$V_{RRM}$	60	V
$I_{FSM}$ @ $t_p = 5\mu s$ sine	1200	A
$V_F$ @ 3.0Apk, $T_J = 125^\circ C$	0.52	V
$T_J$	-55 to 150	$^\circ C$

**Description / Features**

The 30BQ060 surface-mount Schottky rectifier has been designed for applications requiring very low forward drop and small foot prints on PC boards. Typical applications are in disk drives, switching power supplies, converters, free-wheeling diodes, battery charging and reverse battery protection.

- Small footprint, surface mountable
- Very low forward voltage drop
- High frequency operation
- Guard ring for enhanced ruggedness and long-term reliability



# 30BQ060



## Voltage Ratings

Part number	30BQ060
$V_R$ Max. DC Reverse Voltage (V)	60
$V_{RWM}$ Max. Working Peak Reverse Voltage (V)	

## Absolute Maximum Ratings

Parameters		30BQ	Units	Conditions
$I_{F(AV)}$	Max. Average Forward Current See Fig. 5	3.0	A	50% duty cycle @ $T_C = 107^\circ\text{C}$ , rectangular waveform
		4.0		50% duty cycle @ $T_C = 98^\circ\text{C}$ , rectangular waveform
$I_{FSM}$	Max. Peak One Cycle Non - Repetitive Surge Current — see Fig. 7	1200	A	5 $\mu\text{s}$ Sine or 3 $\mu\text{s}$ Rect. pulse
		130		10ms Sine or 6ms Rect. pulse
$E_{AS}$	Non - Repetitive Avalanche Energy	35	mJ	$T_J = 25^\circ\text{C}$ , $I_{AS} = 3.4\text{A}$ , $L = 4.0\text{mH}$
$I_{AR}$	Repetitive Avalanche Current	3.4	A	Current decaying linearly to zero in 1 $\mu\text{sec}$ Frequency limited by $T_J$ max. $V_A = 1.5 \times V_R$ typical

## Electrical Specifications

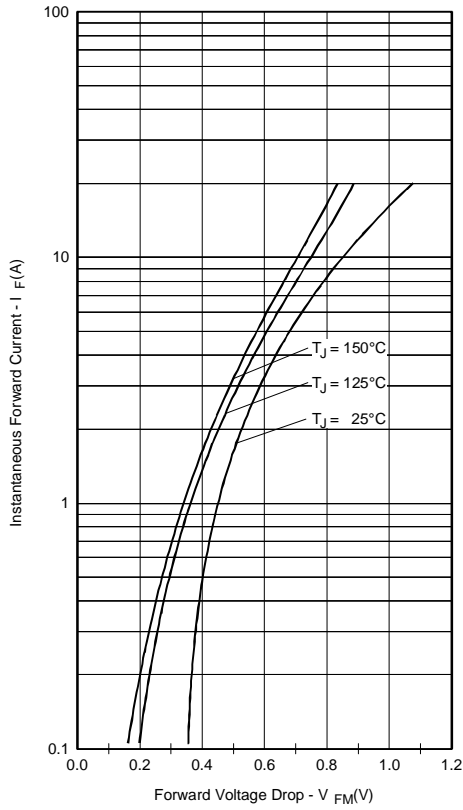
Parameters		30BQ	Units	Conditions
$V_{FM}$	Max. Forward Voltage Drop See Fig. 1 ①	0.58	V	@ 3.0A
		0.73	V	@ 6.0A
		0.52	V	@ 3.0A
		0.63	V	@ 6.0A
$I_{RM}$	Max. Reverse Leakage Current ① See Fig. 2	0.50	mA	$T_J = 25^\circ\text{C}$
		20	mA	$T_J = 125^\circ\text{C}$
$C_T$	Max. Junction Capacitance	180	pF	$V_R = 5V_{DC}$ , (test signal range 100kHz to 1MHz) $25^\circ\text{C}$
$L_S$	Typical Series Inductance	3.0	nH	Measured lead to lead 5mm from package body
$dv/dt$	Max. Voltage Rate of Change (Rated $V_R$ )	10,000	V/ $\mu\text{s}$	

## Thermal-Mechanical Specifications

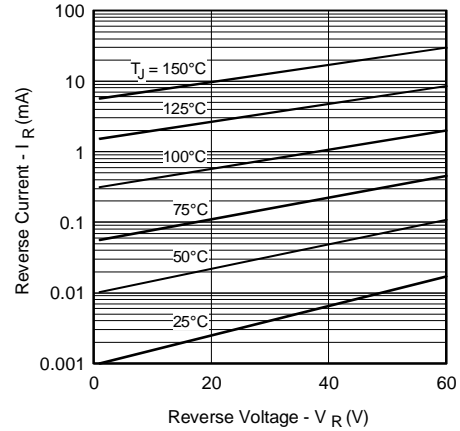
Parameters		30BQ	Units	Conditions
$T_J$	Max. Junction Temperature Range	-55 to 100	$^\circ\text{C}$	
$T_{STG}$	Max. Storage Temperature Range	-55 to 100	$^\circ\text{C}$	
$R_{thJA}$	Max. Thermal Resistance, Junction to Ambient	12	$^\circ\text{C}/\text{W}$	DC operation — See Fig. 4
$R_{thJL}$	Max. Thermal Resistance, Junction to Lead ②	46	$^\circ\text{C}/\text{W}$	DC operation
wt	Approximate Weight	0.24	g	
Case Style		SMC		Similar to DO-214AB

① Pulse Width < 300 $\mu\text{s}$ , Duty Cycle < 2%

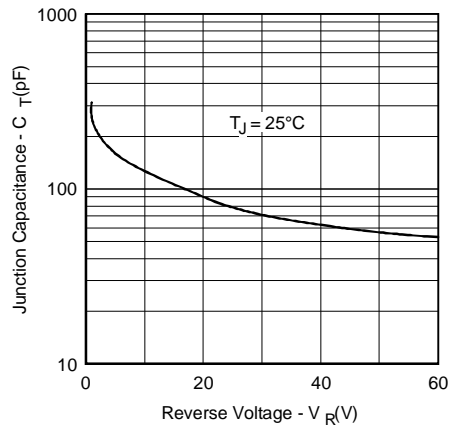
② Mounted 1 inch square PCB, thermal probe connected to lead 2mm from package



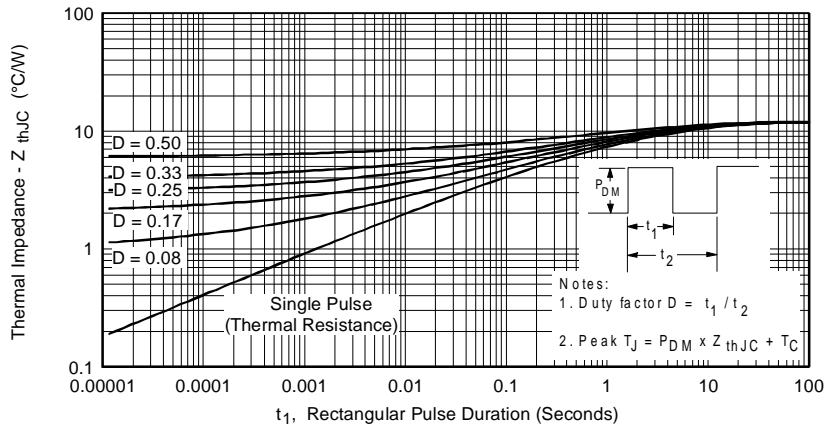
**Fig. 1** Max. Forward Voltage Drop Characteristics



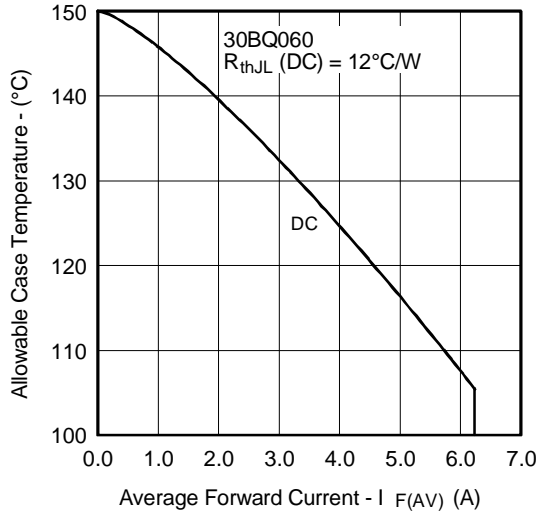
**Fig. 2** Typical Values of Reverse Current Vs. Reverse Voltage



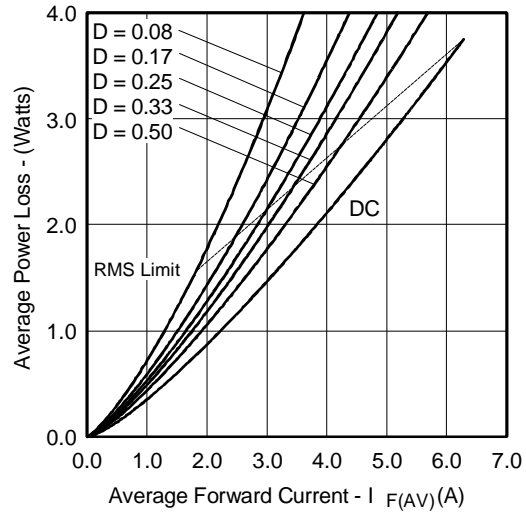
**Fig. 3** Typical Junction Capacitance Vs. Reverse Voltage



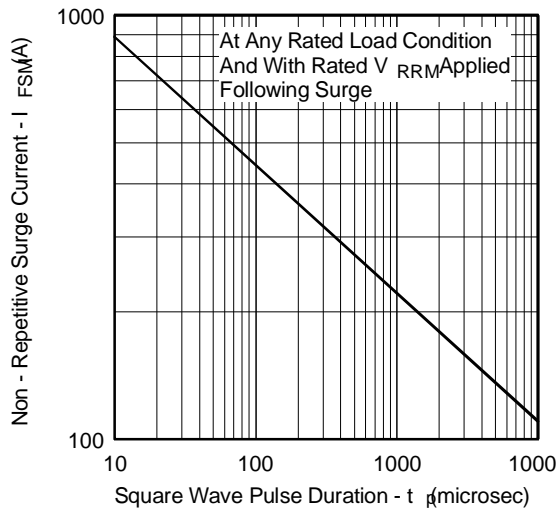
**Fig. 4** Max. Thermal Impedance  $Z_{thJL}$  Characteristics



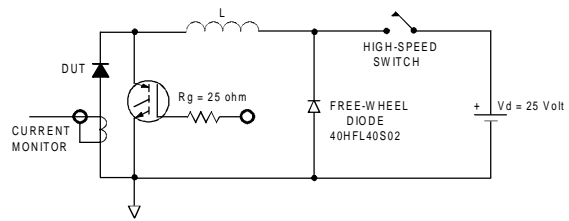
**Fig. 5** Max. Allowable Case Temperature Vs. Average Forward Current



**Fig. 6** Forward Power Loss Characteristics



**Fig.7** Max. Non-Repetitive Surge Current



**Fig. 8** Unclamped Inductive Test Circuit

Refer to the Appendix Section for the following:

**Appendix D:** Tape and Reel Information — See page 339.