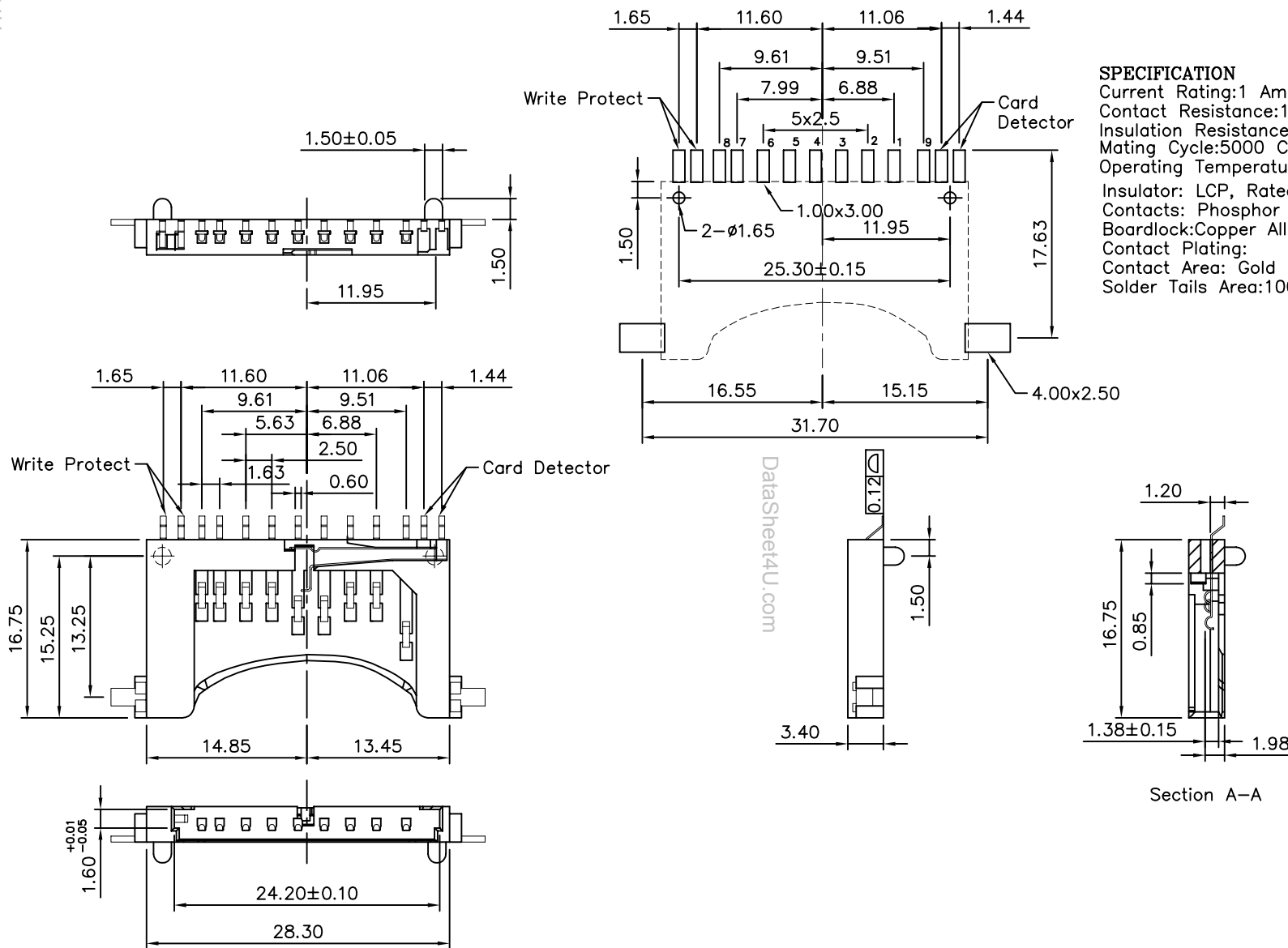


**SPECIFICATION**

Current Rating: 1 Amps Max.  
 Contact Resistance: 100 Milliohms Max.  
 Insulation Resistance: 1000 Megohms Min.  
 Mating Cycle: 5000 Cycles Minute  
 Operating Temperature: -40°C To +85°C  
 Insulator: LCP, Rated UL 94V-0  
 Contacts: Phosphor Bronze  
 Boardlock: Copper Alloy  
 Contact Plating:  
 Contact Area: Gold Flash Plating Over 40u" Nickel  
 Solder Tails Area: 100u" Tin Plating Over 40u" Nickel



DRAWING No.  
SDC09W4

APPROVED BY  
MEI  
 CHECKED BY  
RAN  
 DRAWING BY  
HZF  
 REV. A

UNLESS OTHERWISE SPECIFIED  
TOLERANCES ARE  
 .X ±0.2  
 .XX ±0.15  
 .ANG  
 UNIT mm

AREA	REVISIONS	CHK	DATE



www.DataSheet4U.com