

# XC6365/XC6366 Series

ETR05001-007

## PWM Controlled, PWM/PFM Switchable Step-Down DC/DC Controllers

☆Green Operation Compatible

### ■ GENERAL DESCRIPTION

The XC6365/XC6366 series are multi-functional step-down DC/DC controllers which have 1A output current capability by using an externally connected transistor, coil, diode and capacitor.

Output voltage is programmable in 0.1V increments between 1.5V to 6.0V ( $V_{OUT}$ ) ( $\pm 2.5\%$  accuracy). Further, with 1.0V of standard voltage supply internal and using externally connected components, output voltage can be set up freely (FB). With a 300kHz switching frequency, the size of the external components can be reduced.

Control switches from PWM to PFM during light loads with the XC6366 (PWM/PFM switchable) and the series is highly efficient from light loads to large output currents.

Soft start time of XC6365/ XC6366A, B series is internally set to 10ms and XC6365/66C, D series regulate soft-start time by connecting resistors and capacitors externally.

During stand-by time (CE pin "Low" ), current consumption is reduced to less than  $0.5 \mu A$ .

With UVLO internal, the external transistor will be forcibly switched off if used below the stipulated voltage.

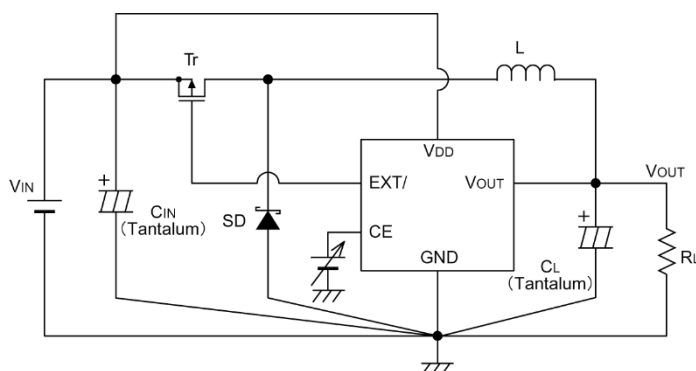
### ■ APPLICATIONS

- E-book Reader / Electronic dictionaries
- Smart phones / Mobile phones
- Note PCs / Tablet PCs
- Digital audio equipments
- Multi-function power supplies

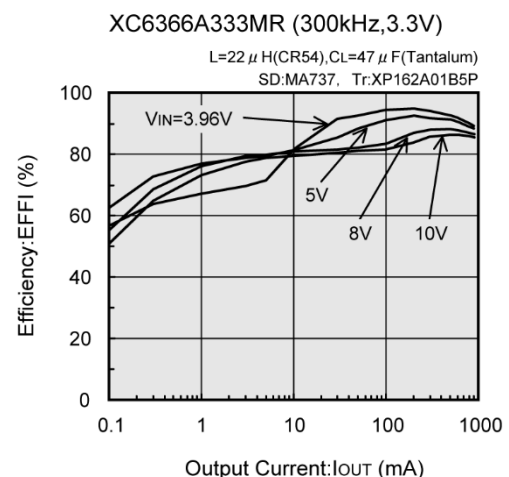
### ■ FEATURES

- Input Voltage Range** : 2.2V ~ 10V ( $V_{OUT}$  type)
- Output Voltage Range** : 1.5V ~ 6.0V (0.1V increments) ( $\pm 2.5\%$ )
- Oscillation Frequency** : 300kHz ( $\pm 15\%$ )  
Custom products for 180, 500kHz
- Output Current** : More than 1.0A ( $V_{IN}=5.0V$ ,  $V_{OUT}=3.0V$ )
- High Efficiency** : 92% (TYP.)
- Stand-by Capability** :  $I_{STB}=0.5 \mu A$  (MAX.)
- Selection** : Soft-start set-up external  
Output voltage set-up internal ( $V_{OUT}$ )  
Output voltage set-up external (FB)  
PWM/PFM Control (XC6366)
- Maximum Duty Cycle** : 100%
- Packages** : SOT-25, USP-6C
- Environmentally Friendly** : EU RoHS Compliant, Pb Free

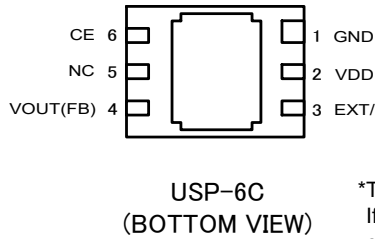
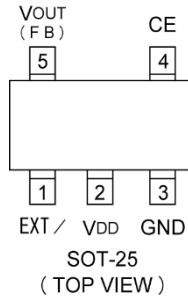
### ■ TYPICAL APPLICATION CIRCUIT



### ■ TYPICAL PERFORMANCE CHARACTERISTICS



## PIN CONFIGURATION



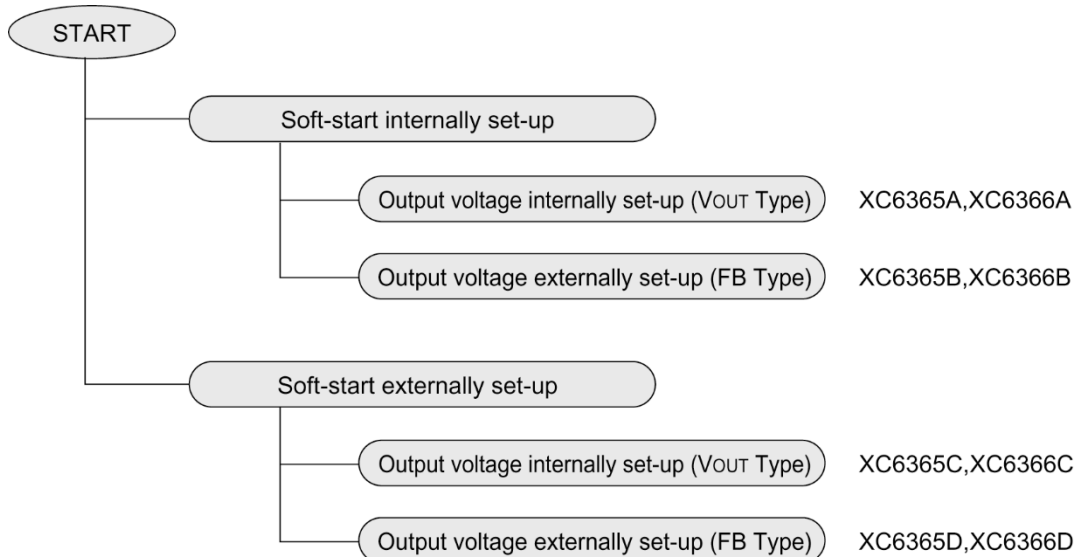
\*The dissipation pad of the USP-6C package should be left open. If the circuit needs to be connected to other pin, it should be connected to the V<sub>DD</sub> (No.2) pin.

## PIN ASSIGNMENT

PIN NUMBER		PIN NAME	FUNCTION
SOT-25	USP-		
1	3	EXT/	External Transistor Connection
2	2	V <sub>DD</sub>	Power Supply
3	1	GND	Ground
4	6	CE	Chip Enable Soft-Start Capacitor Connection with Soft-Start Externally Set-Up Types (C, D)
5	4	V <sub>OUT</sub> (FB)	Output Voltage Monitor FB with Externally Set-Up Types (B, D)
-	5	NC	No Connection

## PRODUCT CLASSIFICATION

### ● Selection Guide



## ■ PRODUCT CLASSIFICATION (Continued)

### ● Ordering Information

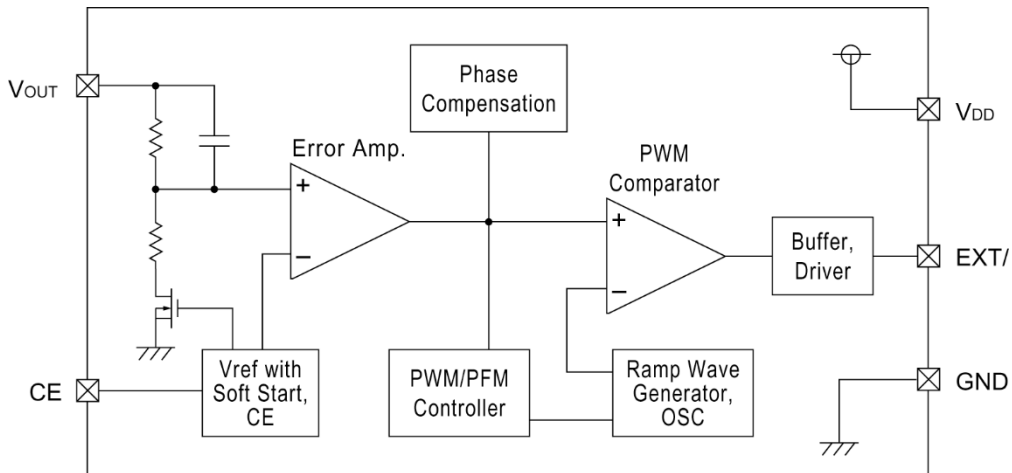
XC6365①②③④⑤⑥-⑦<sup>(\*)</sup> PWM control  
 XC6366①②③④⑤⑥-⑦<sup>(\*)</sup> PWM/PFM switching control

DESIGNATOR	ITEM	SYMBOL	DESCRIPTION
①	Type of DC/DC Converter	A	V <sub>OUT</sub> type: Internally set-up, soft-start internally set-up
		B	FB type: Externally set-up, soft-start internally set-up
		C	V <sub>OUT</sub> type: Internally set-up, soft-start externally set-up
		D	FB type: Externally set-up, soft-start internally set-up
②③	Output Voltage	15~60	V <sub>OUT</sub> type: 3.0V output → ②=3, ③=0
		10	FB type: 10 fixed → ②=1, ③=0 fixed
④	Oscillation Frequency	3	300kHz
		5	500kHz (custom)
		2	180kHz (custom)
⑤⑥-⑦	Packages (Order Unit)	MR-G	SOT-25 (3,000/Reel)
		ER-G	USP-6C (3,000/Reel)

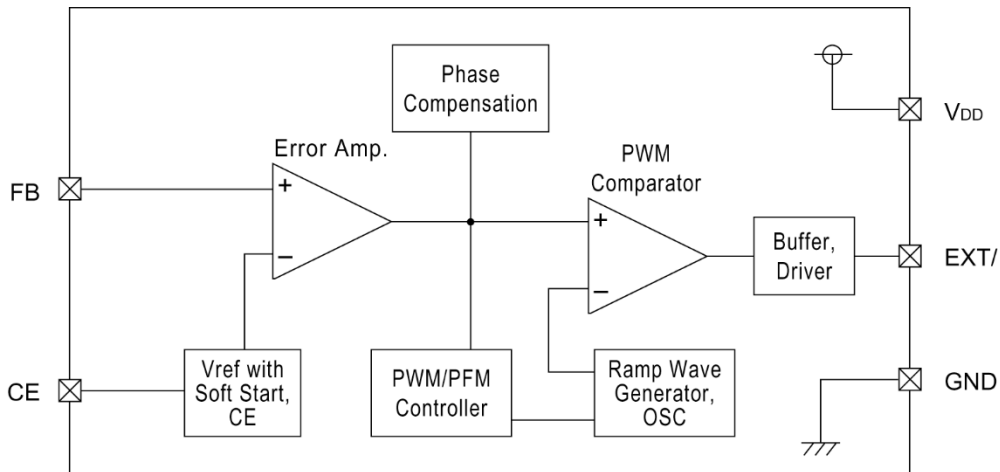
<sup>(\*)</sup> The "-G" suffix indicates that the products are Halogen and Antimony free as well as being fully EU RoHS compliant.

## ■ BLOCK DIAGRAMS

XC6365, XC6366 Series A, C type (VOUT)



XC6365, XC6366 Series B, D type (FB)



## ■ ABSOLUTE MAXIMUM RATINGS

Ta = 25°C

PARAMETER		SYMBOL	RATINGS	UNITS
VIN Pin Voltage		VDD	-0.3 ~ 12	V
VOUT Pin Voltage		VOUT	-0.3 ~ VIN + 0.3	V
FB Pin Voltage		VFB	-0.3 ~ VIN + 0.3	V
CE Pin Voltage		VCE	-0.3 ~ VIN + 0.3	V
EXT/ Pin Voltage		VEXT/	-0.3 ~ VIN + 0.3	V
EXT/ Pin Current		IEXT/	± 100	mA
Power Dissipation	SOT-25	Pd	150	mW
	USP-6C		100	
Operating Temperature Range		Topr	-30 ~ 80	°C
Storage Temperature Range		Tstg	-40 ~ 125	°C

## ■ ELECTRICAL CHARACTERISTICS

XC6365A333MR, XC6366A333MR

(VOUT=3.3V, fosc=300kHz)

Ta=25°C

PARAMETER	SYMBOL	CONDITIONS	MIN.	TYP.	MAX.	UNITS
Output Voltage	VOUT		3.218	3.300	3.383	V
Maximum Input Voltage	VIN		10.0	-	-	V
UVLO Voltage (Minimum Operating Voltage)	VUVLO	Same as IDD1, Voltage which EXT/pin voltage holding "H" level	0.9	-	2.2	V
Supply Current 1	IDD1	No external components, CE=VDD, VOUT=0V	-	57	102	μA
Supply Current 2	IDD2	No external components, XC6365	-	57	102	μA
		CE=VOUT=VDD XC6366	-	15	27	μA
Stand-by Current	ISTB	No external components, CE=VOUT=0V	-	-	0.5	μA
Oscillation Frequency	fosc	Measuring of EXT/ waveform, VIN=output voltage + 0.1V	255	300	345	kHz
Maximum Duty Ratio	MAXDTY		100	-	-	%
PFM Duty Ratio	PFMDTY	No load (XC6366 only)	15	25	35	%
CE "High" Voltage	VCEH	No external components, VOUT=0V, Voltage which EXT/pin voltage holding "L" level	0.65	-	-	V
CE "Low" Voltage	VCEL	No external components, VOUT=0V, Voltage which EXT/pin voltage holding "H" level	-	-	0.20	V
EXT "High" ON Resistance	REXTBH	Same as IDD2, VEXT/=VDD-0.4V	-	16	22	μA
EXT "Low" ON Resistance	REXTBL	Same as IDD1, VEXT/=0.4V	-	14	19	μA
Efficiency	EFFI	Use of a XP162A12A6 transistor recommended	-	92	-	%
Soft-Start Time	tss	Connect Rss, C <sub>SS</sub> , CE, 0V → 3.0V (When VIN ≤ 3.0V, VIN=3.0V)	5	10	20	ms

Conditions: 1. Unless otherwise stated, connect external components. VIN=VDD = 5.0V, IOUT = 220mA

2. XC6365/66C series external components: C<sub>SS</sub>=0.033 μF, R<sub>SS</sub>=470kΩ

## ■ ELECTRICAL CHARACTERISTICS (Continued)

XC6365A503MR, XC6366A503MR

( $V_{OUT}=5.0V$ ,  $f_{osc}=300kHz$ )

$T_a=25^{\circ}C$

PARAMETER	SYMBOL	CONDITIONS	MIN.	TYP.	MAX.	UNITS
Output Voltage	$V_{OUT}$		4.875	5.000	5.125	V
Maximum Input Voltage	$V_{IN}$		10.0	-	-	V
UVLO Voltage (Minimum Operating Voltage)	$V_{UVLO}$	Same as $I_{DD1}$ , Voltage which EXT/pin voltage holding "H" level	0.9	-	2.2	V
Supply Current 1	$I_{DD1}$	No external components, $CE=V_{DD}$ , $V_{OUT}=0V$	-	67	122	$\mu A$
Supply Current 2	$I_{DD2}$	No external components, $XC6365$	-	67	122	$\mu A$
		$CE=V_{OUT}=V_{DD}$ $XC6366$	-	16	29	$\mu A$
Stand-by Current	$I_{STB}$	No external components, $CE=V_{OUT}=0V$	-	-	0.5	$\mu A$
Oscillation Frequency	$f_{osc}$	Measuring of EXT/ waveform, $V_{IN}=\text{output voltage} + 0.1V$	255	300	345	kHz
Maximum Duty Ratio	MAXDTY		100	-	-	%
PFM Duty Ratio	PFMDTY	No load (XC6366 only)	15	25	35	%
CE "High" Voltage	$V_{CEH}$	No external components, $V_{OUT}=0V$ , Voltage which EXT/pin voltage holding "L" level	0.65	-	-	V
CE "Low" Voltage	$V_{CEL}$	No external components, $V_{OUT}=0V$ , Voltage which EXT/pin voltage holding "H" level	-	-	0.20	V
EXT "High" ON Resistance	$R_{EXTBH}$	Same as $I_{DD2}$ , $V_{EXT}=V_{IN}-0.4V$	-	12	17	$\mu A$
EXT "Low" ON Resistance	$R_{EXTBL}$	Same as $I_{DD1}$ , $V_{EXT}=0.4V$	-	10	14	$\mu A$
Efficiency	EFFI	Use of a XP162A12A6 transistor recommended	-	93	-	%
Soft-Start Time	tss	Connect $R_{ss}$ , $C_{ss}$ , $CE$ , $0V \rightarrow 3.0V$ (When $V_{IN} \leq 3.0V$ , $V_{IN}=3.0V$ )	5	10	20	ms

Conditions: 1. Unless otherwise stated, connect external components.  $V_{IN}=V_{DD} = 7.5V$ ,  $I_{OUT} = 330mA$

2. XC6365/66C series external components:  $C_{ss}=0.033 \mu F$ ,  $R_{ss}=470k \Omega$

## ■ ELECTRICAL CHARACTERISTICS (Continued)

XC6365B103MR, XC6366B103MR

(V<sub>OUT</sub>=3.0V, f<sub>osc</sub>=300kHz)

T<sub>a</sub>=25°C

PARAMETER	SYMBOL	CONDITIONS	MIN.	TYP.	MAX.	UNITS
Output Voltage	V <sub>OUT</sub>		2.925	3.000	3.075	V
Maximum Input Voltage	V <sub>IN</sub>		10.0	-	-	V
UVLO Voltage (Minimum Operating Voltage)	V <sub>UVLO</sub>	Same as I <sub>DD1</sub> , Voltage which EXT/pin voltage holding "H" level	0.9	-	2.2	V
Supply Current 1	I <sub>DD1</sub>	No external components, CE=V <sub>IN</sub> , V <sub>OUT</sub> =0V	-	55	100	μA
Supply Current 2	I <sub>DD2</sub>	No external components, XC6365	-	55	100	μA
		CE=V <sub>DD</sub> , FB=1.2V XC6366	-	15	27	μA
Stand-by Current	I <sub>STB</sub>	No external components, CE=FB=0V	-	-	0.5	μA
Oscillation Frequency	f <sub>osc</sub>	Measuring of EXT/ waveform, V <sub>IN</sub> =output voltage + 0.1V	255	300	345	kHz
Maximum Duty Ratio	MAXDTY		100	-	-	%
PFM Duty Ratio	PFMDTY	No load (XC6366 only)	15	25	35	%
CE "High" Voltage	V <sub>CEH</sub>	No external components, FB=0V, Voltage which EXT/pin voltage holding "L" level	0.65	-	-	V
CE "Low" Voltage	V <sub>CEL</sub>	No external components, V <sub>OUT</sub> =0V, Voltage which EXT/pin voltage holding "H" level	-	-	0.20	V
EXT "High" ON Resistance	R <sub>EXTBH</sub>	Same as I <sub>DD2</sub> , V <sub>EXT</sub> =V <sub>IN</sub> -0.4V	-	17	24	μA
EXT "Low" ON Resistance	R <sub>EXTBL</sub>	Same as I <sub>DD1</sub> , V <sub>EXT</sub> =0.4V	-	15	20	μA
Efficiency	EFFI	Use of a XP162A12A6 transistor recommended	-	92	-	%
Soft-Start Time	t <sub>SS</sub>	Connect R <sub>SS</sub> , C <sub>SS</sub> , CE, 0V → 3.0V (When V <sub>IN</sub> ≤ 3.0V, V <sub>IN</sub> =3.0V)	5	10	20	ms

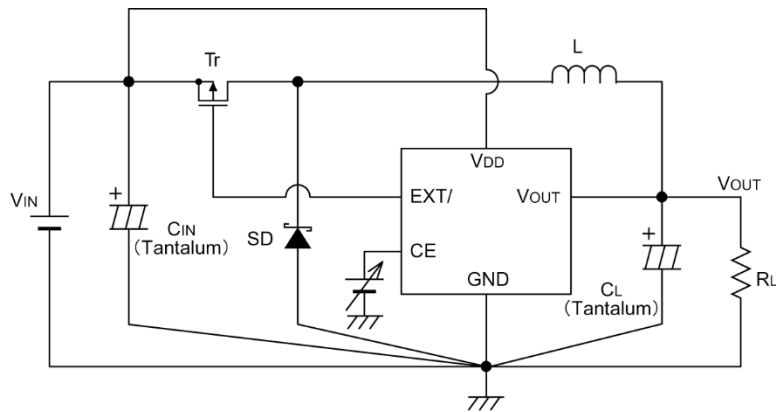
Conditions: 1. Unless otherwise stated, connect external components. V<sub>IN</sub>=V<sub>DD</sub> = 4.5V, I<sub>OUT</sub> = 200mA

2. XC6365/66C series external components: C<sub>SS</sub>=0.033 μF, R<sub>SS</sub>=470kΩ

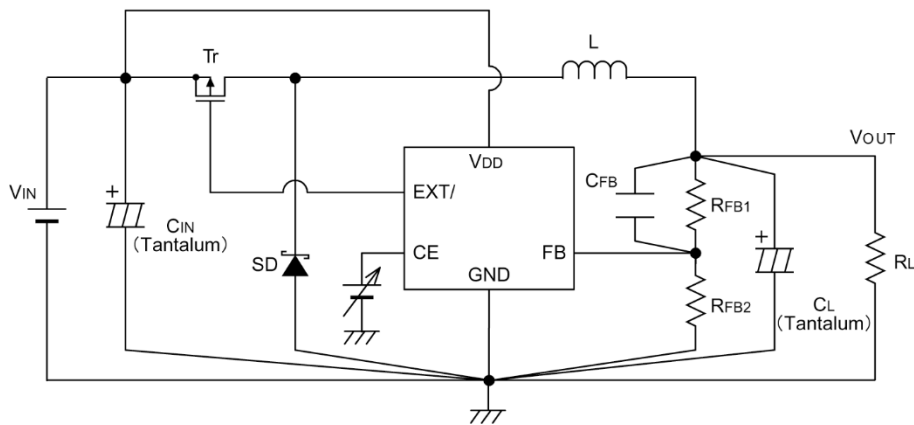
3. R<sub>FB1</sub> = 400kΩ, R<sub>FB2</sub> = 200kΩ, C<sub>FB</sub> = 100ppF

## TEST CIRCUITS

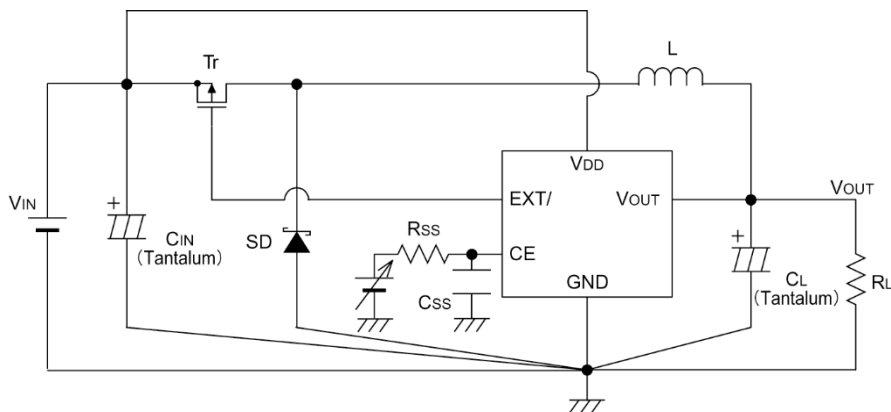
Circuit 1. XC6365A, XC6366A



Circuit 2. XC6365B, XC6366B

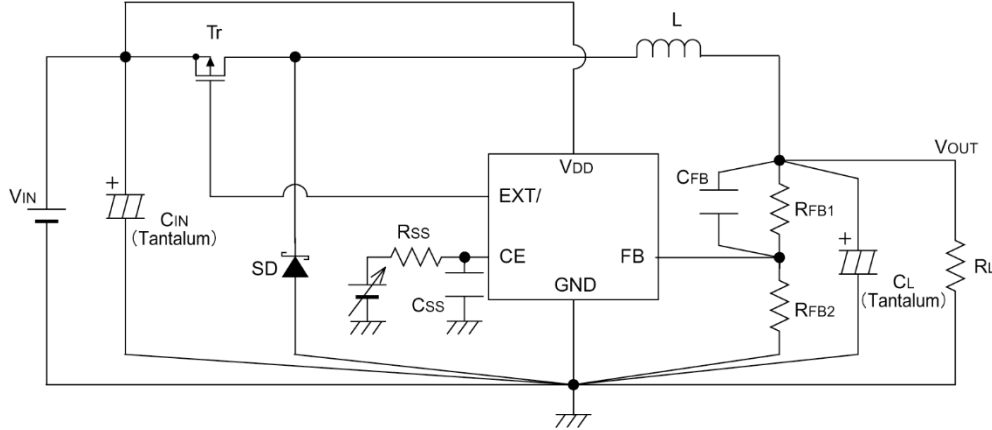


Circuit 3. XC6365C, XC6366C

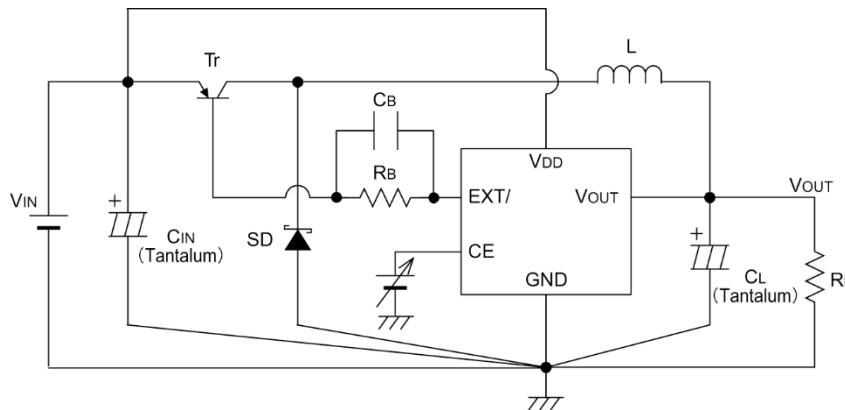


■ **TEST CIRCUITS (Continued)**

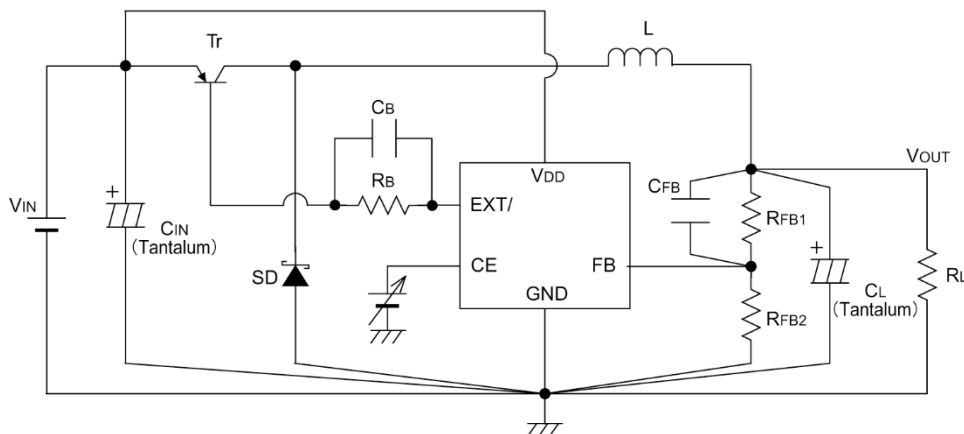
Circuit 4. XC6365D, XC6366D



Circuit 5. XC6365A, XC6366A (when used with a PNP transistor)

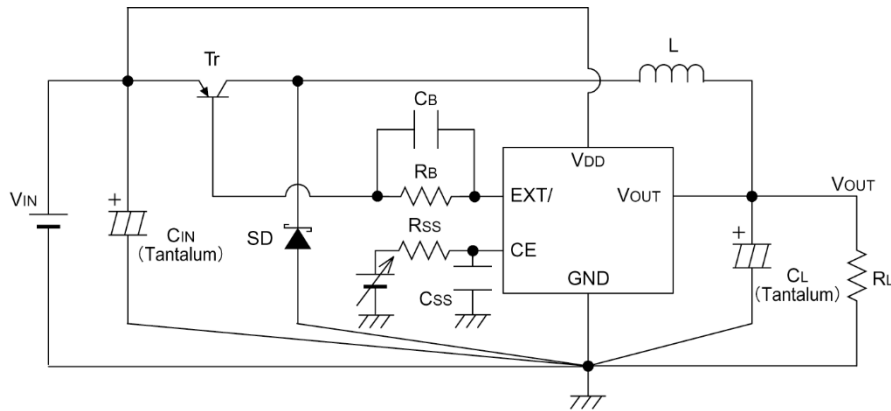


Circuit 6. XC6365B, XC6366B (when used with a PNP transistor)

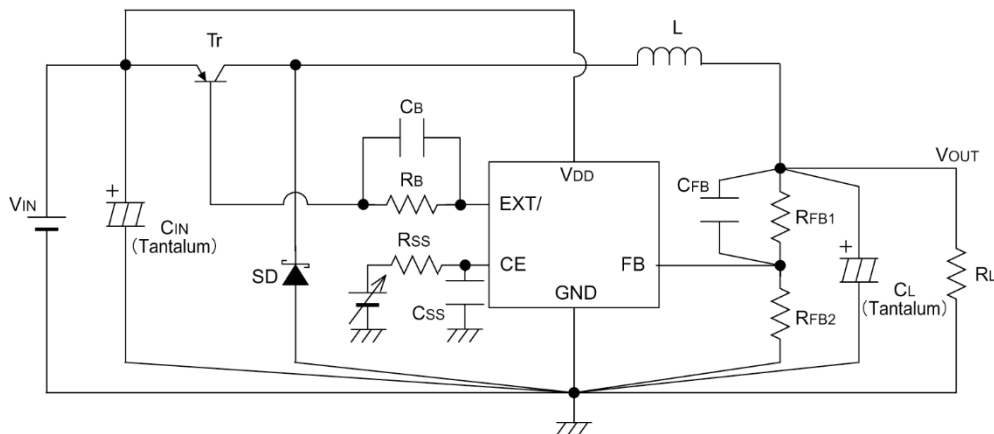


## TEST CIRCUITS (Continued)

Circuit 7. XC6365C, XC6366C (when used with a PNP transistor)



Circuit 8. XC6365D, XC6366D (when used with a PNP transistor)



### Recommended Components

Tr : XP162A12A6PR (Torex P-channel Power MOSFET)  
Please use a PNP transistor where  $V_{IN} < 2.5V$

L : 22  $\mu$  H (CR54, SUMIDA,  $f_{osc}=300kHz$ )  
47  $\mu$  H (CR75, SUMIDA,  $f_{osc}=180kHz$ )  
10  $\mu$  H (CR54, SUMIDA,  $f_{osc}=500kHz$ )

SD : MA2Q735 (Schottky Diode, MATSUSHITA)

CL : 10V, 47  $\mu$  F (Tantalum capacitor, NICHICHEMI MCE)

CIN : 16V 10  $\mu$  F (Tantalum capacitor, NICHICHEMI MCE)

### PNP Tr. Type

Tr : 2SA1213 (TOSHIBA)

Rb : 500  $\Omega$  (Adjust according to load and Tr. hFE levels)

Cb : 2200pF (Ceramic Type)

Set up so that  $C_b \leq 1 / (2\pi \times R_b \times f_{osc} \times 0.7)$

### C, D type (soft-start externally set-up)

Css : 0.033  $\mu$  F (Ceramic Capacitor)

Rss : 470k $\Omega$ (C type), 330k $\Omega$ (D type)

### B, D type (FB type)

RFB : Set up so that  $R_{FB1} / R_{FB2} = V_{OUT} - 1$   
( $V_{OUT}$  = setting output voltage),  
 $R_{FB1} = R_{FB2} \leq 2M\Omega$

CFB : Set up so that  $f_{zfb} = 1 / (2\pi \times C_{FB} \times R_{FB1})$  is within  
the 0.5kHz to 20kHz range (10kHz conventional)  
Adjustments necessary in respect of L, CL.

e.g. :  $V_{OUT} = 3.0V$

$R_{FB1} = 400k\Omega$ ,  $R_{FB2} = 200k\Omega$ ,  $C_{FB} = 100pF$

## ■ NOTES ON USE

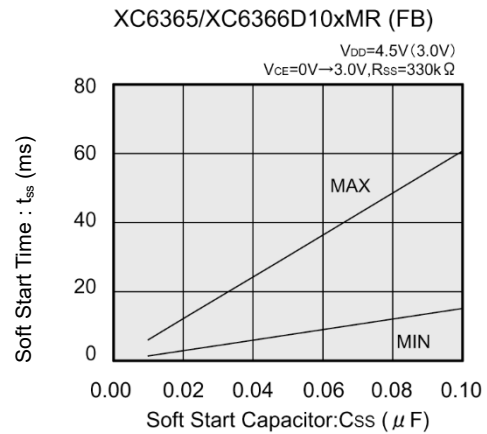
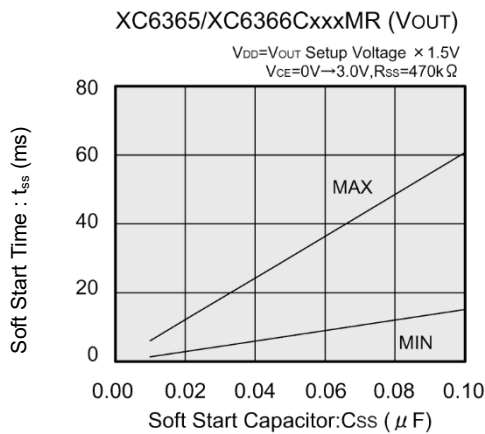
1. Take ample care to ensure that none of the IC's, nor the external component's, absolute maximum ratings are exceeded.
2. Be extremely careful when selecting parts and do not limit your reference to the specifications and characteristics for the DC/DC converter alone. The IC also depends, to a great extent, upon the external components.
3. Arrange the peripherals in the environs of the IC. In order to reduce wiring impedance, use short, thick wires. In particular, wire the load capacitor as close as possible and strengthen the ground wiring sufficiently.
4. Ground current during switching may cause the IC's operations to become unstable due to changes in ground voltage, so please strengthen the IC's GND pin surroundings.

## ● External Components

### 1. Setting soft start time

To set a longer soft start time, please use XC6365C or XC6365D series which soft start function is externally set up.

For the measurement of soft start time  $T_{SS}$ , the time is needed to be between the maximum and the minimum value indicated in the chart below. Please set a soft start capacitor  $C_{SS}$  according to the application.

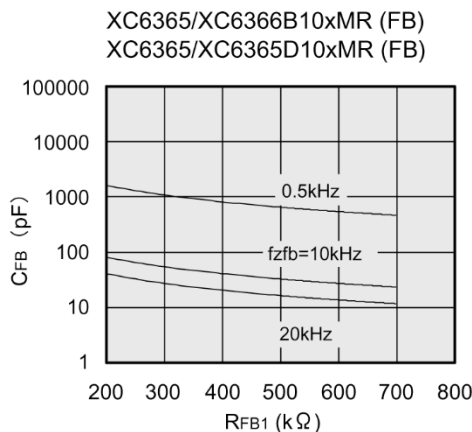


### 2. Setting $R_{FB1}$ and $C_{FB}$

$$f_{zfb} = 1 \div (2 \pi \times C_{FB} \times R_{FB1})$$

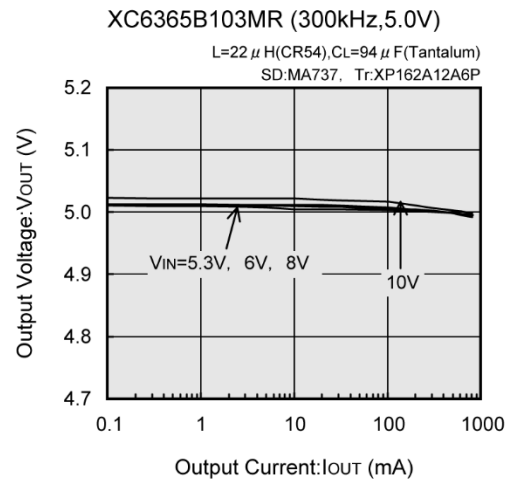
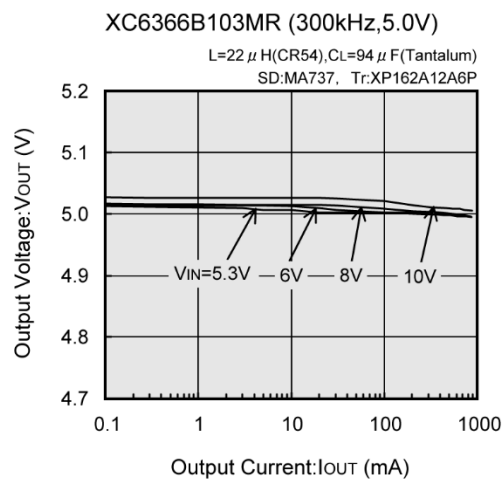
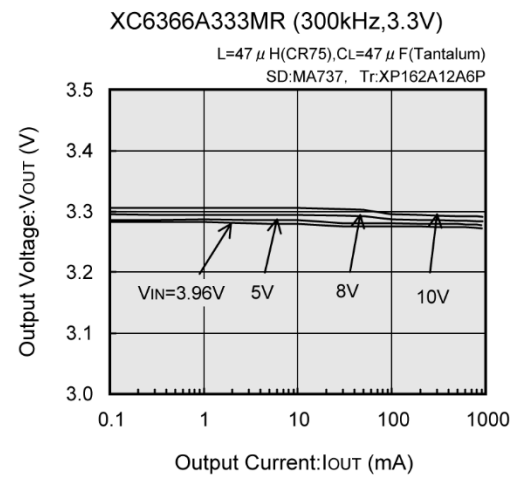
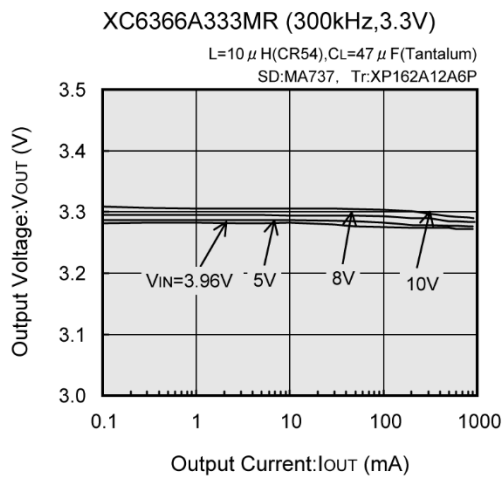
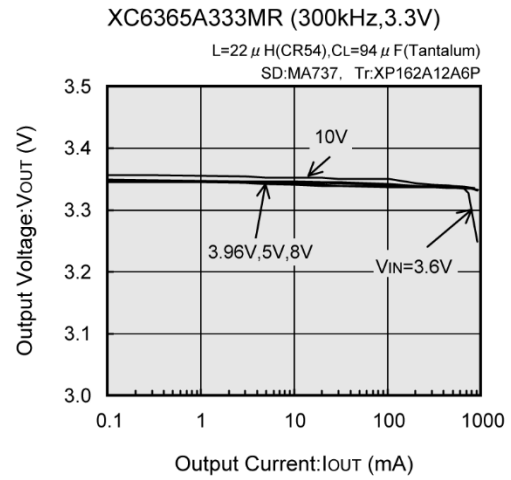
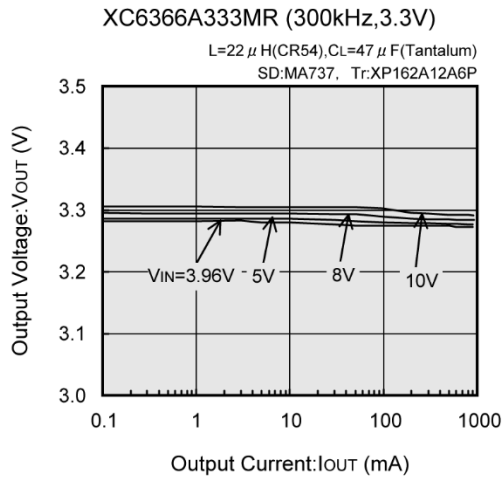
As the combination of  $R_{FB1}$  and  $C_{FB}$  enable to set  $f_{zfb}$  between 0.5kHz to 20kHz, within the realm of  $f_{zfb}=0.5kHz$  to  $f_{zfb}=20kHz$  as the chart below can be effective.

Under normal condition, please set the combination to configure around  $f_{zfb}=10kHz$ .



## TYPICAL PERFORMANCE CHARACTERISTICS

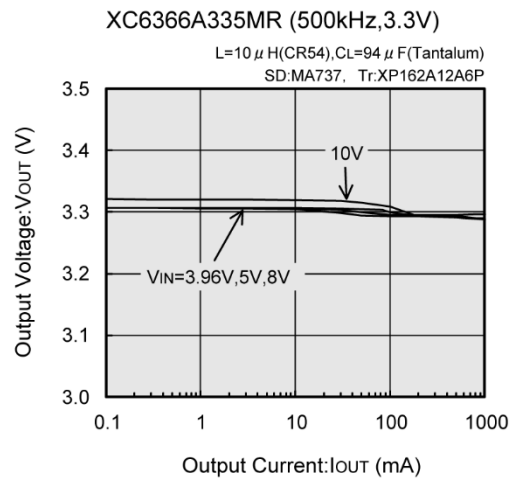
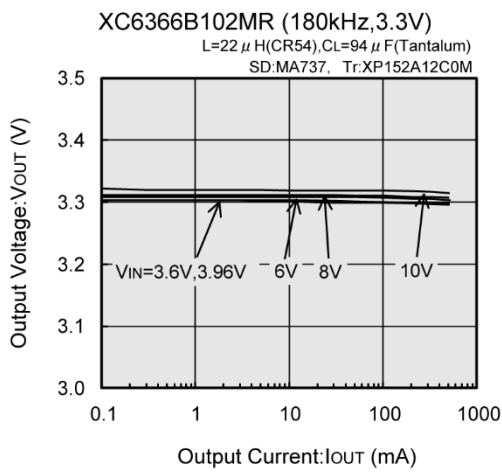
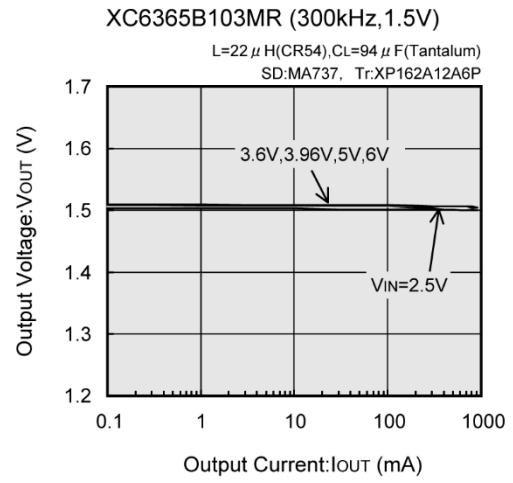
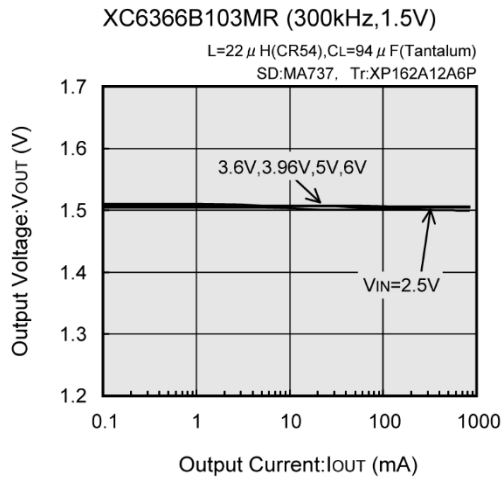
### (1) Output Voltage vs. Output Current



Note: CIN=47  $\mu$  F(Tantalum)

## ■ TYPICAL PERFORMANCE CHARACTERISTICS (Continued)

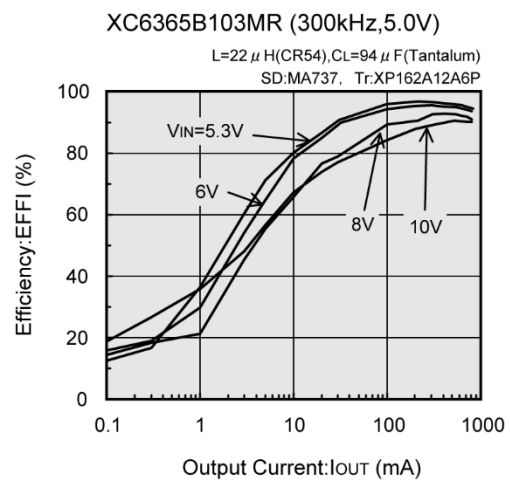
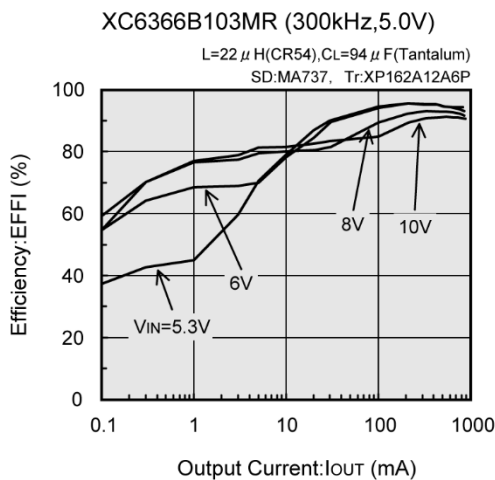
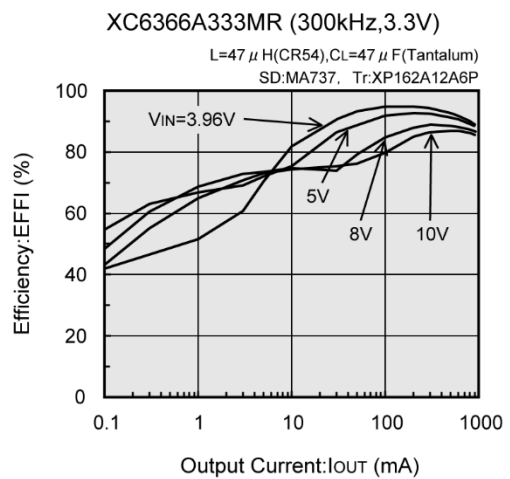
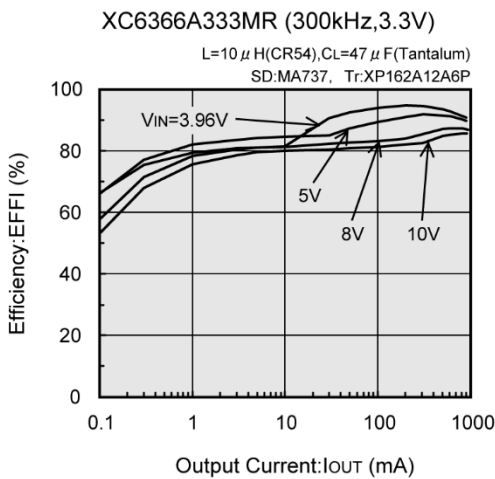
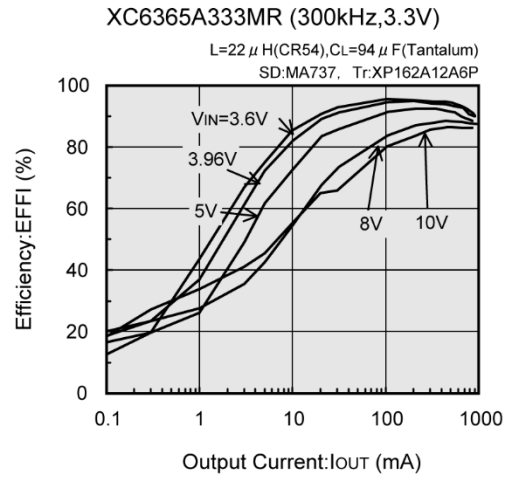
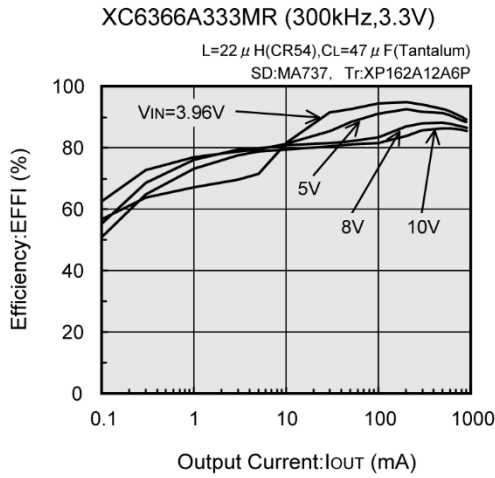
(1) Output Voltage vs. Output Current (Continued)



Note: CIN=47  $\mu$ F (Tantalum)

## TYPICAL PERFORMANCE CHARACTERISTICS (Continued)

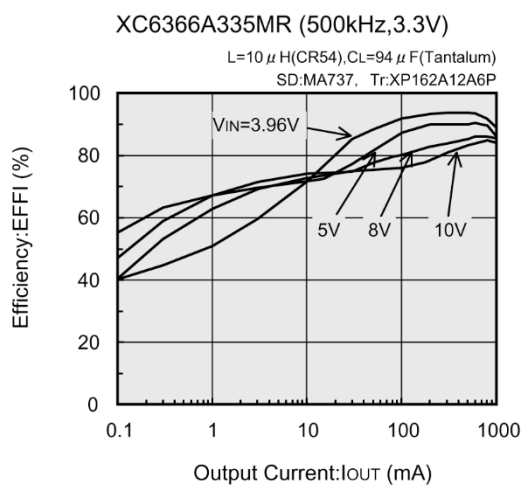
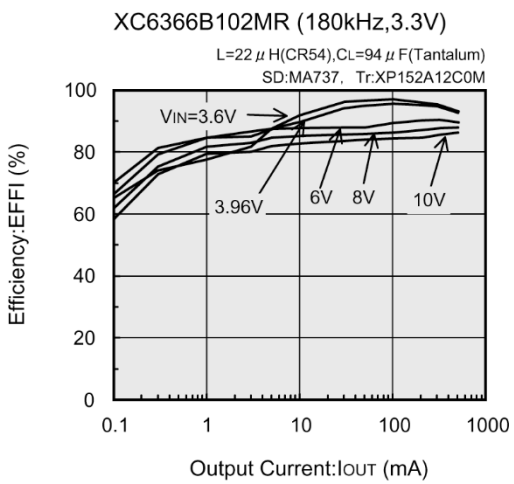
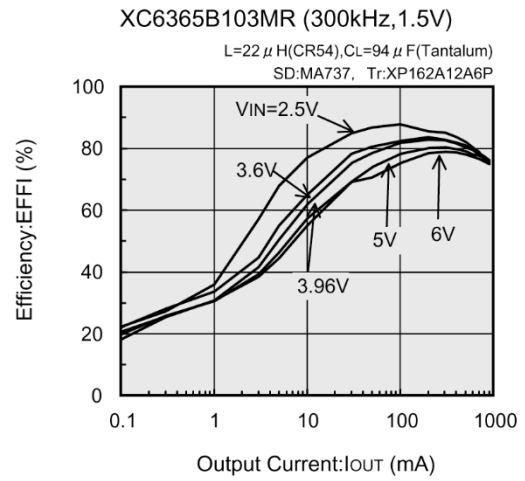
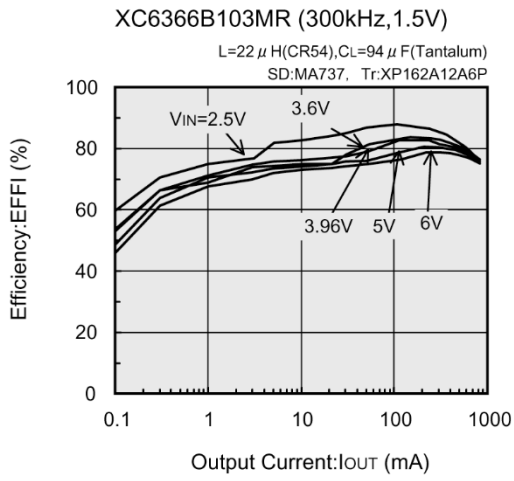
### (2) Efficiency vs. Output Current



Note: CIN=47  $\mu$  F(Tantalum)

## ■ TYPICAL PERFORMANCE CHARACTERISTICS (Continued)

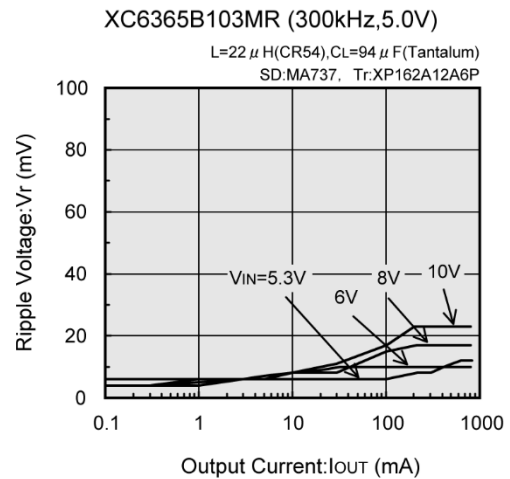
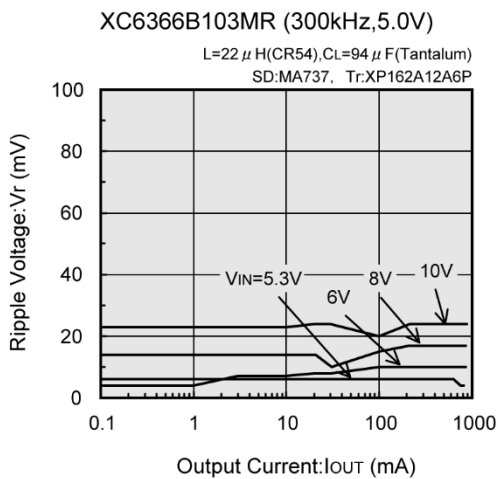
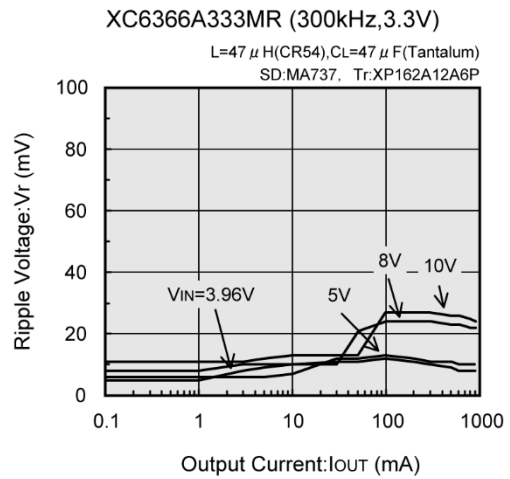
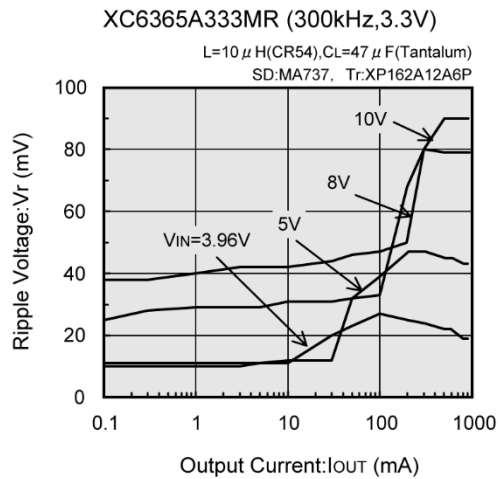
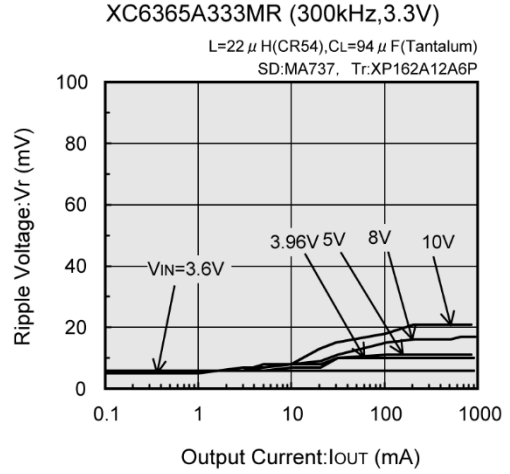
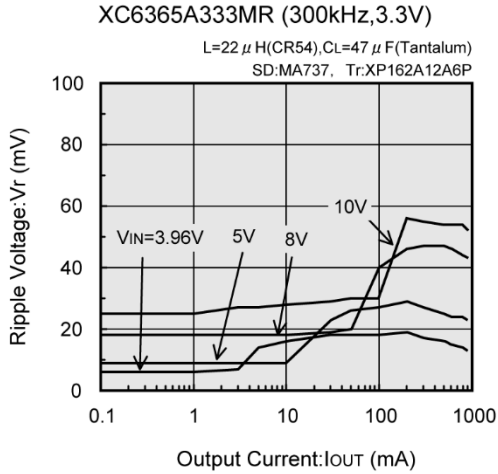
(2) Efficiency vs. Output Current (Continued)



Note: CIN=47  $\mu$  F(Tantalum)

## TYPICAL PERFORMANCE CHARACTERISTICS (Continued)

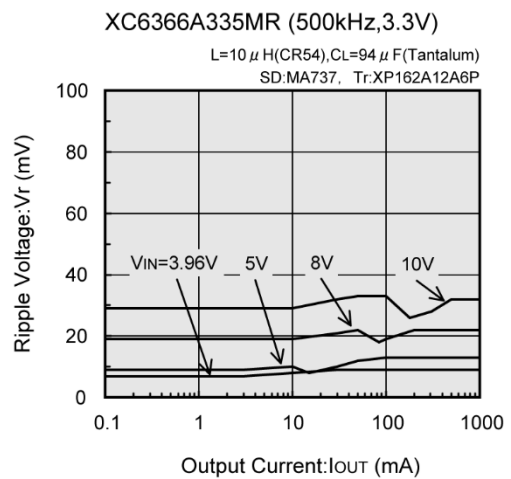
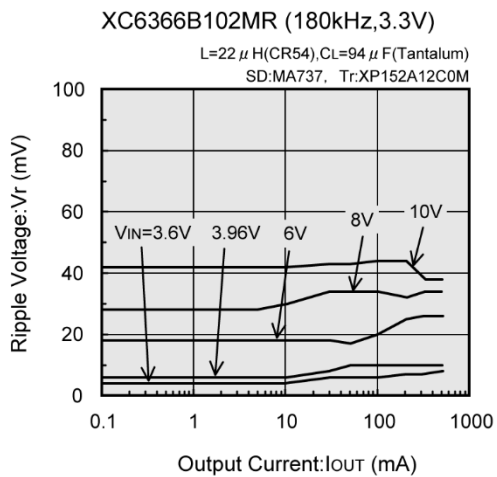
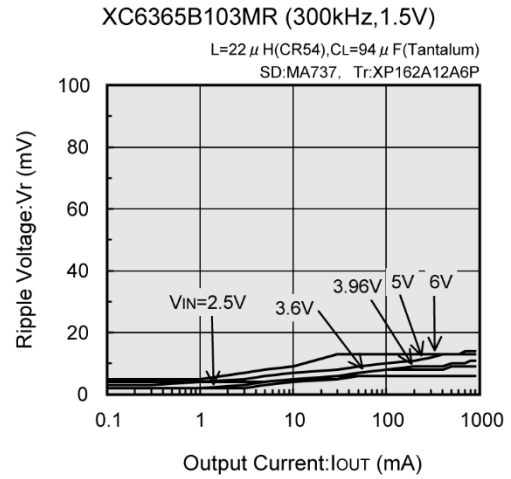
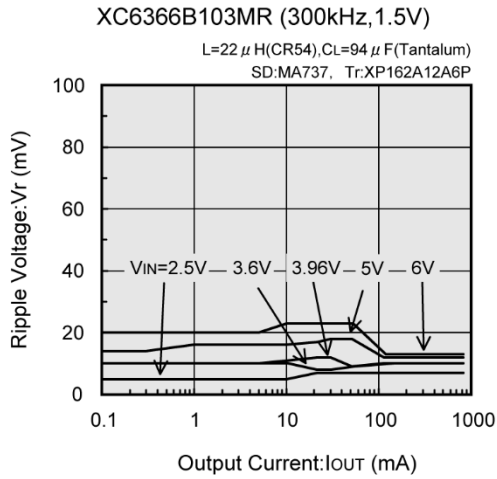
(3) Ripple Voltage vs. Output Current



Note: CIN=47  $\mu$ F (Tantalum)

## ■ TYPICAL PERFORMANCE CHARACTERISTICS (Continued)

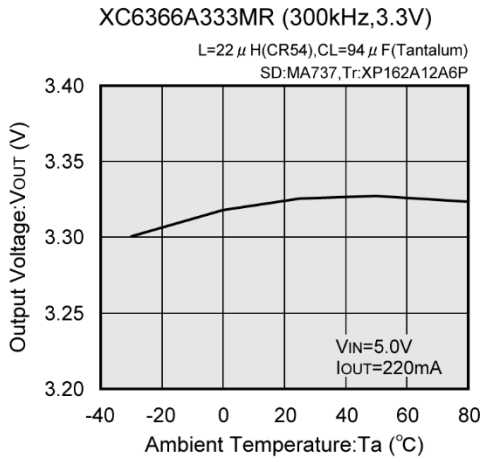
### (3) Ripple Voltage vs. Output Current (Continued)



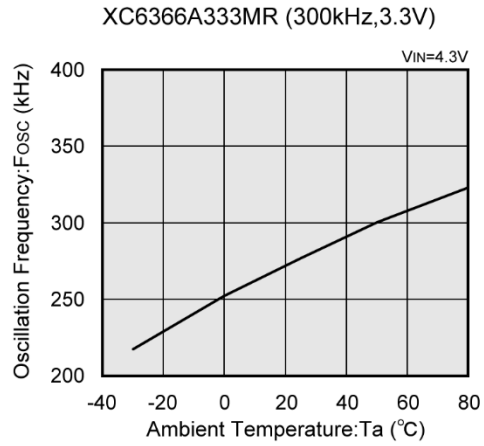
Note: CIN=47  $\mu$  F(Tantalum)

## TYPICAL PERFORMANCE CHARACTERISTICS (Continued)

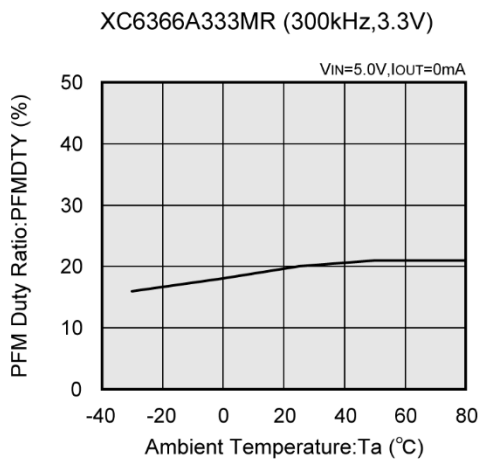
(4) Output Voltage vs. Ambient Temperature



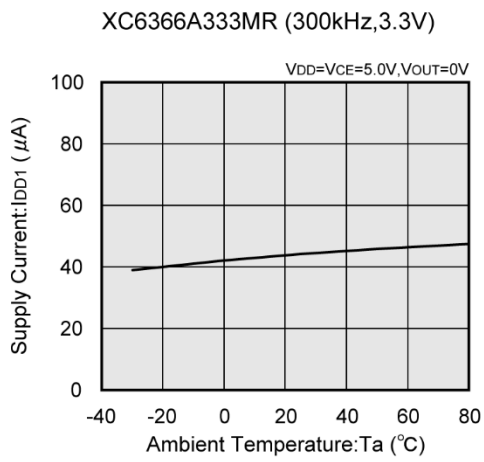
(5) Oscillation Frequency vs. Ambient Temperature



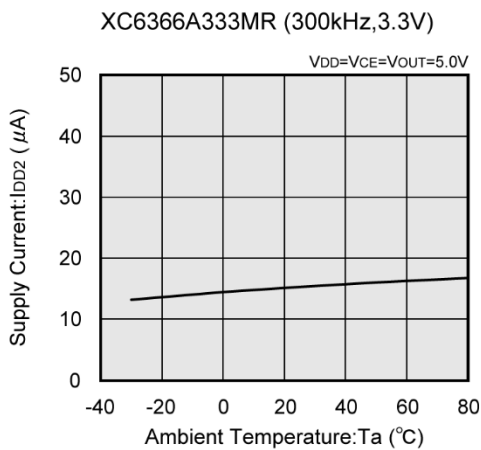
(6) PFM Duty Ratio vs. Ambient Temperature



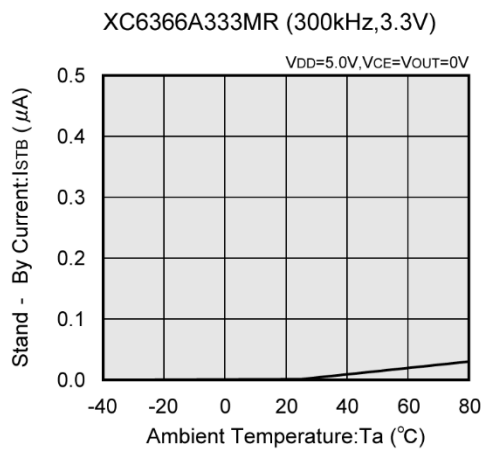
(7) Supply Current 1 vs. Ambient Temperature



(8) Supply Current 2 vs. Ambient Temperature

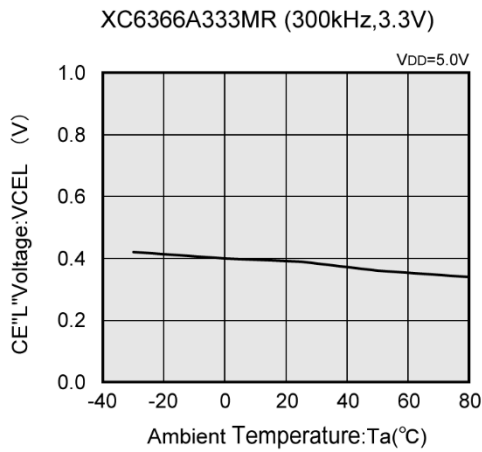


(9) Stand-By Current vs. Ambient Temperature

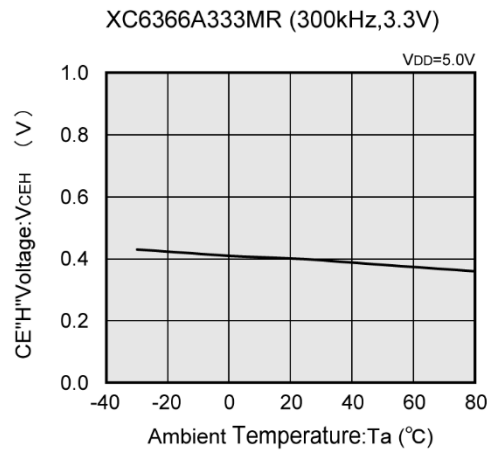


## ■ TYPICAL PERFORMANCE CHARACTERISTICS (Continued)

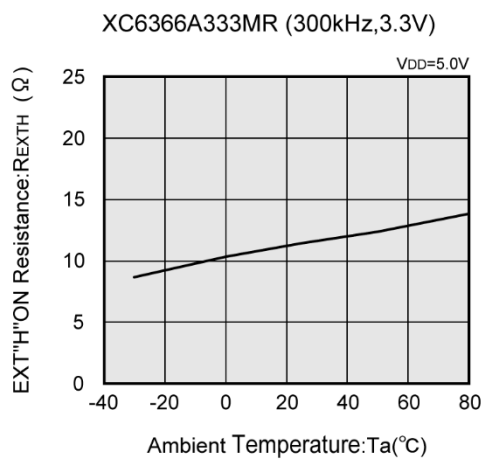
(10) CE"L"Voltage vs. Ambient Temperature



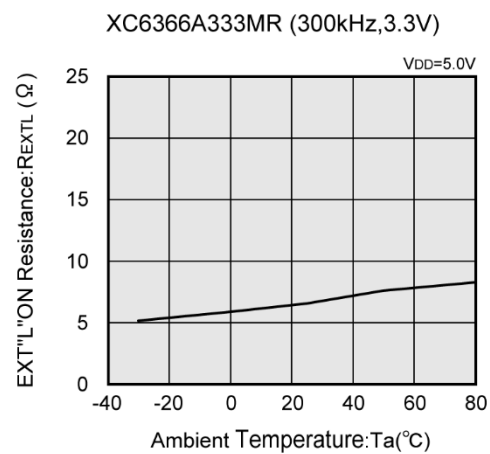
(11) CE"H"Voltage vs. Ambient Temperature



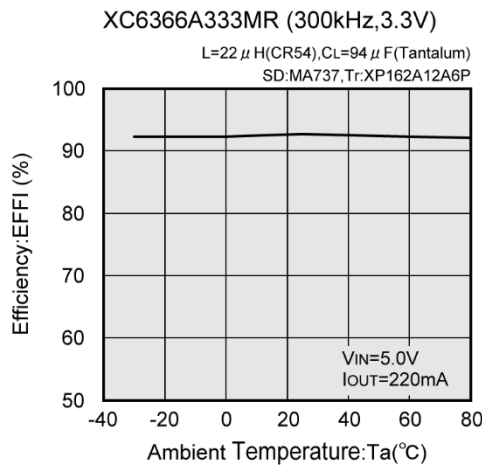
(12) EXT"H"ON Resistance vs. Ambient Temperature



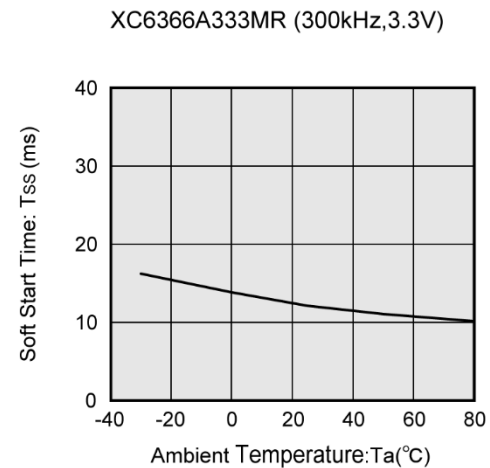
(13) EXT"L"ON Resistance vs. Ambient Temperature



(14) Efficiency vs. Ambient Temperature

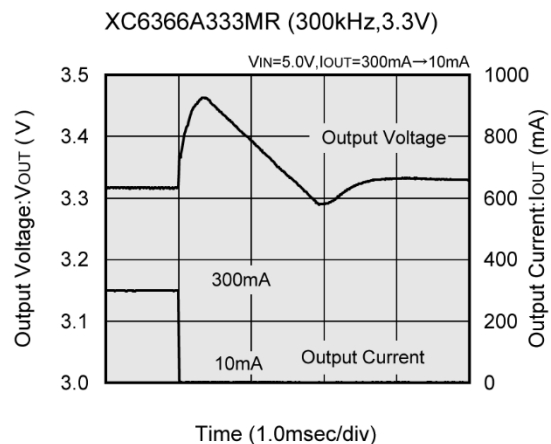
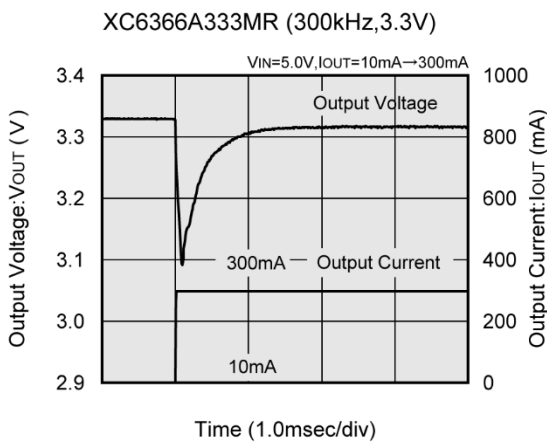
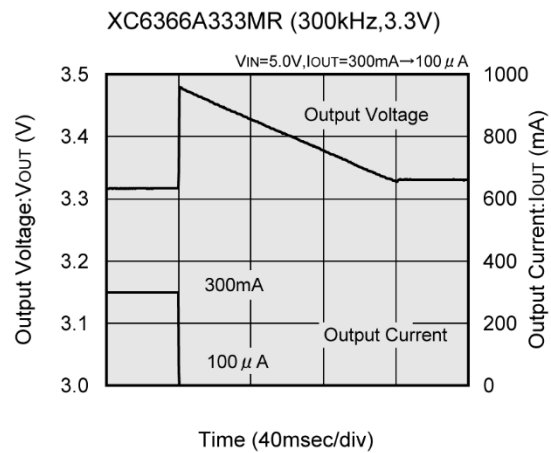
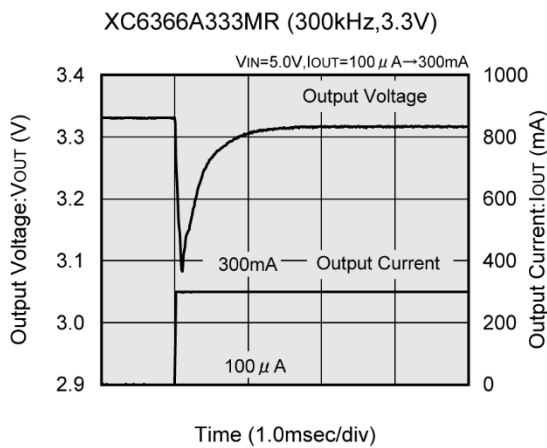
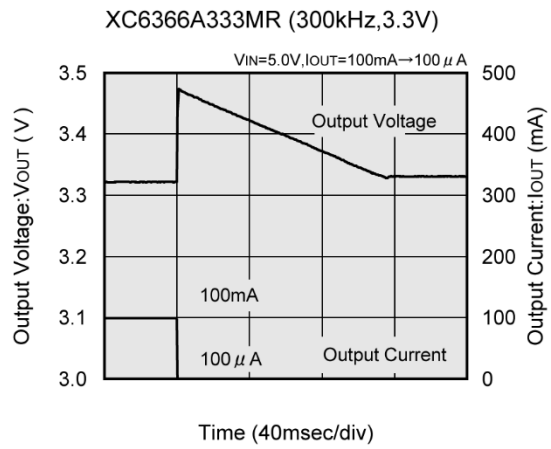
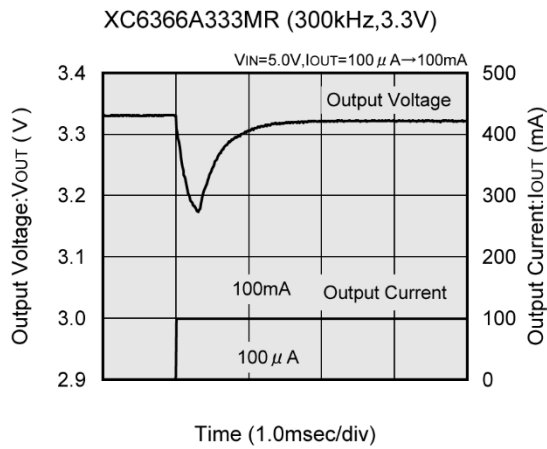


(15) Soft-Start Time vs. Ambient Temperature



## TYPICAL PERFORMANCE CHARACTERISTICS (Continued)

### (16) Load Transient Response

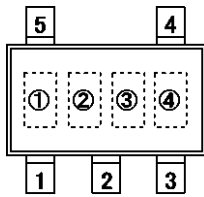


## ■ PACKAGING INFORMATION

For the latest package information go to, [www.torexsemi.com/technical-support/packages](http://www.torexsemi.com/technical-support/packages)

PACKAGE	OUTLINE / LAND PATTERN	THERMAL CHARACTERISTICS
SOT-25	<a href="#">SOT-25 PKG</a>	<a href="#">SOT-25 Power Dissipation</a>
USP-6C	<a href="#">USP-6C PKG</a>	<a href="#">USP-6C Power Dissipation</a>

## MARKING RULE



SOT-25  
(TOP VIEW)

① represents product classification

MARK	PRODUCT SERIES	MARK	PRODUCT SERIES
<u>A</u>	XC6365A	<u>K</u>	XC6366A
<u>B</u>	XC6365B	<u>L</u>	XC6366B
<u>C</u>	XC6365C	<u>M</u>	XC6366C
<u>D</u>	XC6365D	<u>N</u>	XC6366D

② represents integer of output voltage and oscillation frequency

OUTPUT VOLTAGE	OSCILLATION FREQUENCY (kHz)			
	100	180	300	500
1.x	<u>B</u>	<u>1</u>	<u>1</u>	<u>B</u>
2.x	<u>C</u>	<u>2</u>	<u>2</u>	<u>C</u>
3.x	<u>D</u>	<u>3</u>	<u>3</u>	<u>D</u>
4.x	<u>E</u>	<u>4</u>	<u>4</u>	<u>E</u>
5.x	<u>F</u>	<u>5</u>	<u>5</u>	<u>F</u>
6.x	<u>H</u>	<u>6</u>	<u>6</u>	<u>H</u>

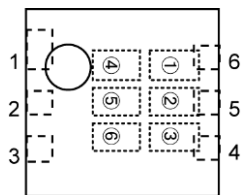
③ represents decimal number of output voltage and oscillation frequency

OUTPUT VOLTAGE	OSCILLATION FREQUENCY (kHz)			
	100	180	300	500
x.0	0	0	A	A
x.1	1	1	B	B
x.2	2	2	C	C
x.3	3	3	D	D
x.4	4	4	E	E
x.5	5	5	F	F
x.6	6	6	H	H
x.7	7	7	K	K
x.8	8	8	L	L
x.9	9	9	M	M

④ represents production lot number

0 to 9, A to Z repeated (G, I, J, O, Q, W excluded)

## MARKING RULE (Continued)



USP-6C  
(TOP VIEW)

① represents product series

MARK	PRODUCT SERIES
2	XC6365****E*
0	XC6366****E*

② represents product classification

MARK	PRODUCT SERIES
A	XC6365/66A***E*
B	XC6365/66B***E*
C	XC6365/66C***E*
D	XC6365/66D***E*

③④ represents output voltage

e.g.:

MARK		OUTPUT VOLTAGE (V)	PRODUCT SERIES
③	④		
3	3	3.3	XC6365/66*33*E*
5	0	5.0	XC6365/66*50*E*

⑤ represents oscillation frequency

MARK	OSCILLATION FREQUENCY	PRODUCT SERIES
2	180kHz	XC6365/66***2E*
3	300kHz	XC6365/66***3E*
5	500kHz	XC6365/66***5E*

⑥ represents production lot number

0 to 9, A to Z repeated (G, I, J, O, Q, W excluded)

1. The product and product specifications contained herein are subject to change without notice to improve performance characteristics. Consult us, or our representatives before use, to confirm that the information in this datasheet is up to date.
2. The information in this datasheet is intended to illustrate the operation and characteristics of our products. We neither make warranties or representations with respect to the accuracy or completeness of the information contained in this datasheet nor grant any license to any intellectual property rights of ours or any third party concerning with the information in this datasheet.
3. Applicable export control laws and regulations should be complied and the procedures required by such laws and regulations should also be followed, when the product or any information contained in this datasheet is exported.
4. The product is neither intended nor warranted for use in equipment of systems which require extremely high levels of quality and/or reliability and/or a malfunction or failure which may cause loss of human life, bodily injury, serious property damage including but not limited to devices or equipment used in 1) nuclear facilities, 2) aerospace industry, 3) medical facilities, 4) automobile industry and other transportation industry and 5) safety devices and safety equipment to control combustions and explosions. Do not use the product for the above use unless agreed by us in writing in advance.
5. Although we make continuous efforts to improve the quality and reliability of our products; nevertheless Semiconductors are likely to fail with a certain probability. So in order to prevent personal injury and/or property damage resulting from such failure, customers are required to incorporate adequate safety measures in their designs, such as system fail safes, redundancy and fire prevention features.
6. Our products are not designed to be Radiation-resistant.
7. Please use the product listed in this datasheet within the specified ranges.
8. We assume no responsibility for damage or loss due to abnormal use.
9. All rights reserved. No part of this datasheet may be copied or reproduced unless agreed by Torex Semiconductor Ltd in writing in advance.

TOREX SEMICONDUCTOR LTD.